



Expertise

Protocol number: 41427732  
Order No. / Reference: 25146155  
Inspection date: 8 Sept 2025

Manufacturer: Volkswagen

Model: Passat Variant 2.0 TDI SCR DSG Business

VIN: WVGZZZ3CZNE050039



| Vehicle details                                    |                     |
|--|---------------------|
| Manufacturer / Type / Model / Equipment            |                     |
| Volkswagen Passat Variant 2.0 TDI SCR DSG Business |                     |
| Vehicle Identification number                      | WVGZZZ3CZNE050039   |
| Mileage (Read)                                     | 137,664 km          |
| First registration                                 | 5 Apr 2022          |
| Number of holders                                  | 1                   |
| Next periodical technical inspection               | 03/2027             |
| (Report on hand)                                   |                     |
| Power / Engine displacement                        | 110 kw / 1,968 ccm  |
| Fuel type / Cylinder                               | Diesel / 4          |
| Gearbox / Number of gears                          | Automatic / 7       |
| Type of drive                                      | Front drive         |
| Type of vehicle                                    | Station wagon       |
| Colour / colour code                               | Mangangrau-metallic |
| Doors / Seats                                      | 5 / 5               |
| Upholstery type                                    | Cloth               |
| Colour of upholstery                               | Grey-Black          |



## Vehicle details

|  |                              |                                |   |
|--|------------------------------|--------------------------------|---|
| <b>Maintenance booklet / proof</b>               | digital proof / complete     | <b>Next maintenance in</b>     | 17,100 km   |
| <b>Last maintenance on / at</b>                  | 03/2025 at 124,761 km        |                                |   |
| <b>Key is / should be</b>                        | 3 / 3                        | <b>FZG documents</b>           | ZB#2 (B) was available (copy), ZB#1 (S) was not available |
|  |                              | <b>Letter No.</b>              | GJ073757  |
| <b>Previous damage / Accident</b>                | Detectable                   | <b>Repainting</b>              | None detectable   |
| <b>Inspection conditions</b>                     | sufficient                   | <b>Lifting equipment / pit</b> | yes   |
| <b>Test drive</b>                                | Not performed                | <b>Engine function test</b>    | Performed   |
| <b>Manufacturer key number/ type code number</b> | 0603 / BQS 02161             |                                |   |
| <b>Emission standard</b>                         | EURO6;WLTP;AP;PI/CI; M, N1 I | <b>Fine dust sticker</b>       |   |
| <b>Permitted total weight</b>                    | 2,200 kg                     | <b>Empty weight</b>            |   |

## Tyres

### Mounted tyres

| #  | Tyre size      | Type of tyre                               | Manufacturer | Tread depth |
|----|----------------|--|--------------|-------------|
| 1) | 215/60 R16 95H | Winter tyres on Steel rim with wheel cover | Dunlop       | 5mm / 5mm   |
| 2) | 215/60 R16 95H | Winter tyres on Steel rim with wheel cover | Dunlop       | 6mm / 6mm   |

### Additional tyres

| #  | Tyre size      | Type of tyre                | Manufacturer | Tread depth |
|----|----------------|-----------------------------|--------------|-------------|
| 1) | 215/60 R16 95V | Summer tyres on Light alloy | Falken       | 4mm / 4mm   |
| 2) | 215/60 R16 95V | Summer tyres on Light alloy | Falken       | 5mm / 5mm   |

### Replacement

| Typ | Tyre size | Type of tyre            | Manufacturer | Tread depth |
|-----|-----------|-------------------------|--------------|-------------|
|     | Tirefit   | Expiration date 01/2026 |              |             |

**Legend:** Tread depth information for tires on the left is in the first place, for tires on the right is in the second place on the axle in the direction of travel

## Equipment

### Standard equipment

- Airbag for driver and front passenger
- Anti-lock braking system (ABS)
- Automatic distance control ACC "stop & go", including speed limiter
- Cup holders (2) front
- Brake light, third
- Headlining in Mistral Grey
- diesel particulate filter
- Parking aid - warning signals for obstacles in the front and rear areas
- Electronic stabilization program and electromechanical brake booster
- Front windscreen in laminated safety glass, heat and sound insulating
- Transmission: 7-speed DSG
- ISOFIX anchorage points
- Headrests (3) rear
- LED fog lights and cornering lights
- LED headlights with daytime running lights
- Headlight range adjustment
- Front center armrest height and length adjustable, with storage box
- Mesh partition
- Emergency braking assistant "Front Assist" (for automatic distance control ACC up to 210 km/h)
- Upholstery: "Business" fabric
- Radio "Composition"
- Radio accessories: Digital radio reception DAB+
- Wheels: 4 light alloy wheels "Sepang" 6.5 J x 16
- Rear seat bench undivided, backrest asymmetrically divided and foldable, with center armrest
- Power steering
- Seats: Comfort seats in the front
- Seats: Front seats height adjustable
- Start-stop system
- Telephone interface
- First aid kit, warning triangle and safety vest
- Electronic immobilizer
- Airbag, head airbag system for front and rear passengers
- App Connect
- Exterior mirrors electrically adjustable, heated, ambient lighting
- Hill start assist
- Chrome strips on the side windows
- Roof rails black
- tachometer
- LED entry/warning lights in the front doors
- Electronic parking brake including auto-hold function
- Automatic headlight switching
- Remote release for the trunk lid
- Pedestrian detection
- Luggage compartment floor can be raised
- Interior lights with switch-off delay and dimming function
- Air conditioning
- Front headrests
- LED taillights
- Steering wheel: Multifunction steering wheel in leather, with shift paddles
- Multifunction display "Premium" with multi-color display
- Fatigue detection
- Non-smoking version
- Emergency call service
- Package: Light and Vision Package "Plus"
- Proactive occupant protection system in conjunction with "Front Assist"
- Tire pressure monitoring indicator (passive)
- Wheels: Tire Mobility Set
- Leather gearshift knob
- Keyless start system without safe lock
- Seat belts: three-point automatic seat belt
- Seats: Lumbar supports in front
- Lane keeping assistant "Lane Assist"
- 12V socket on the rear center console
- Textile floor mats
- Warning sound and light for unfastened seat belts at the front and rear

### Extra equipment

- Exterior mirrors with ambient lighting and passenger mirror lowering (folding and heated - dimming on driver's side)
- High beam control "Light Assist" (automatically switches on the high beam in the dark at speeds above 65 km/h - detects vehicles ahead and oncoming vehicles and automatically dims them before they are dazzled)
- Headliner in titanium black (with individual installation)
- Chassis: Rear suspension with fully automatic level control
- Removable luggage compartment protective mat (back of the rear seat backrest with black rubber covering)
- Paint finish: metallic
- Steering wheel: Multifunction steering wheel in leather, heated, with shift paddles



- "Discover Pro" navigation system including "Streaming & Internet" (4x20W app-controlled, wireless digital cockpit, operation with proximity sensor, dual tuner with phase shift, DAB vehicle menu, speed, volume adjustment, gesture control, 32GB SSD hard drive, 2D map display, sound control, triple TFT display with touchscreen, MP3 navigation for Europe, voice control, telephone contact address, telephone interface, "Comfort" with inductive charging, 2 USB iPod/iPhone traffic signs, "We Connect Plus" including "We Connect" destination guidance, dynamic RDS TMC tuner, pre-programmed mobile key, for vehicle, Smart.)
- Voice control
- Package: "Business Premium" package including navigation (from Business)
- Package: Ambient Lighting "Plus" (multi-colored ambient lighting - LED entry/warning lights in all doors - interior lights with switch-off delay and dimming function, 2 LED reading lights each at the front and rear)
- Proactive occupant protection system and lane change assistant "Side Assist"
- Smoking version (ashtray at the front - cigarette lighter at the front)
- Rear side windows and rear window tinted
- Auxiliary heating and ventilation (with radio remote control and timer)

### Brief expert findings

|                      |  |
|----------------------|--|
| Documents submitted  | At the time of the inspection, the registration certificate Part 2 (letter) was available, but the registration certificate Part 1 (certificate) was not. (Copy)         |
| VIN comparison       | The vehicle identification number (VIN) was read from the vehicle and its conformity with the submitted documents was verified during the inspection by the undersigned. |
| Inspection           | The inspection conditions were sufficient for the assessment of the vehicle.<br>Lifting equipment and a pit were available for examining the vehicle.                    |
| Test drive           | No test drive/maneuvering was carried out during the inspection of the vehicle.  |
| Engine function test | An engine test run was performed.  |

### Value reducing factors

| No. | Component group         | Description   |
|-----|-------------------------|---|
| 1   | Trim / covers           | Boot lining - Scratch(es) - Loss in value           |
| 2   | Door - front right side | Door - dent(s) - Smart repair                       |
| 3   | Boot lid / rear door    | Trim - standard - lower - Scratched - Replace       |
| 4   | Front bumper            | Front bumper - Scratch(es) - Paint                  |
| 5   | Bonnet                  | Bonnet - Dent / paintcoat damage - Repair and paint |

### Wear and tear

| No. | Component group | Description  |
|-----|-----------------|--|
| 1   | Wheel / tyres   | Wheel cover - front left side - Scratch(es) - No deduction |

The vehicle shows signs of wear commensurate with its age and use.

### Previous damages

| No. | Previous damage  | Extent of damage (Net) |
|-----|--|------------------------|
| 1   | Side right, Provided by user / customer, from 12 Sept 2024 | 661,65 €               |
| 2   | Side right, Provided by user / customer, from 11 Dec 2023  | 1.033,76 €             |
| 3   | Side - left, Provided by user / customer, from 26 Jul 2024 | 1.223,54 €             |



## Order/Scope of order

The order was placed to prepare a sales report for the vehicle described. This includes the following:

- Description of core relevant information about the vehicle
- Documentation of equipment features  
*(Delivery by third-party service providers)*
- Documentation of damage, defects, missing parts
- Documentation of previous damage, unrepaired previous damage, repainting
- a brief visual or functional inspection of the equipment details if possible.  
*(Functional tests of driver assistance systems are not included in the scope of services!)*
- a photo documentation of the vehicle

## Basis for the order

This product is based on the Alphabet Fuhrpark GmbH guidelines for vehicle returns and valuations. The expert makes the explicit findings in each individual case objectively within the framework of the specified standards based on his or her own expertise.

The vehicle inspection takes place in a disassembled state.

Damage or defects that can only be detected during disassembly/diagnosis work or through advanced knowledge remain within the scope of the prognosis risk. An extended risk exists for concealed defects caused by fraudulent deception and not identifiable by the expert.

Damage or defects resulting from normal use or wear and tear of the vehicle will be accepted according to the applicable standard.

There was no explicit identification or monetary consideration of the expected features within the product.

Features which in their nature and severity slightly exceed normal use but do not constitute unacceptable damage will be documented and identified under signs of use if necessary.

Damage or defects which, according to the underlying standard, can no longer be attributed to normal use or wear and tear are listed in the product under "Depreciating Factors".

Depending on the product specification, a monetary ID can be provided. If this takes place, the costs can be 100% d or pro rata depending on the vehicle's age and mileage.

## Previous damages

According to available information previous damages were repaired at the vehicle. Traces of repairs, which allow conclusions about the area of repair, were not recognizable during the inspection.

## Comments

- Winterradsatz ist kein Bestandteil des Auslieferumfangs





**Figure 1:** Diagonal front (left)



**Figure 2:** Diagonal front (right)



**Figure 3:** Diagonal rear (left)



**Figure 4:** Diagonal rear (right)



**Figure 5:** Interior - front



**Figure 6:** Interior - rear





Figure 7: Instrument cluster



Figure 8: Instrument panel



Figure 9: Interior 360° view



Figure 10: Cargo area

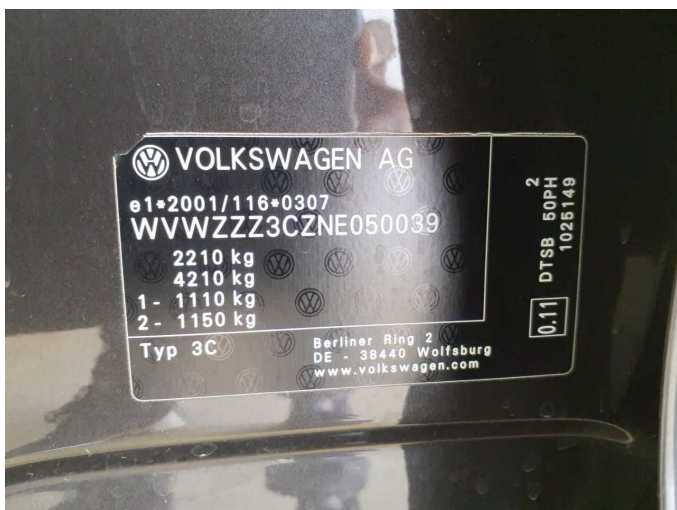


Figure 11: VIN



Figure 12: Mounted tyres





Figure 13: Documents

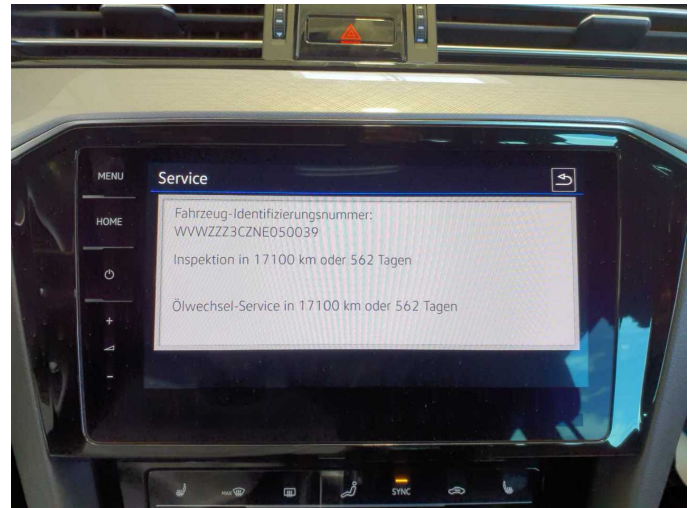


Figure 14: Documents

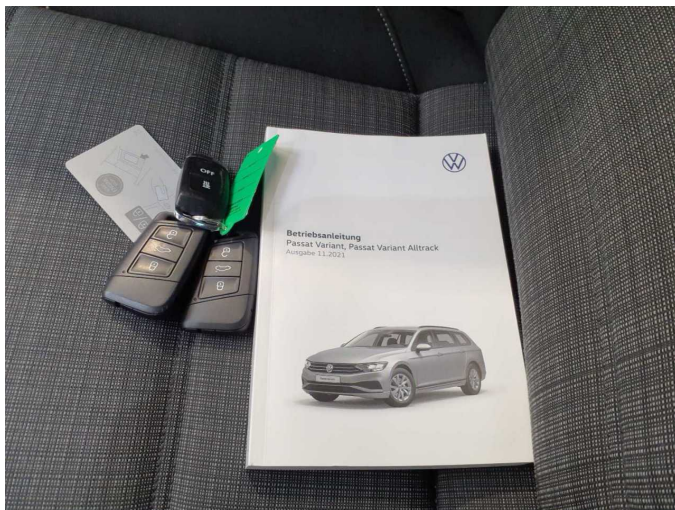


Figure 15: Documents



Figure 16: Additional tyres



Figure 17: Navigation



Figure 18: Misc.





Figure 19: Misc.



Figure 20: Misc.



Figure 21: Misc.



Figure 22: Misc.



Figure 23: Misc.



Figure 24: Misc.





Figure 25: Misc.



Figure 26: Misc.



Figure 27: Misc.



Figure 28: Misc.

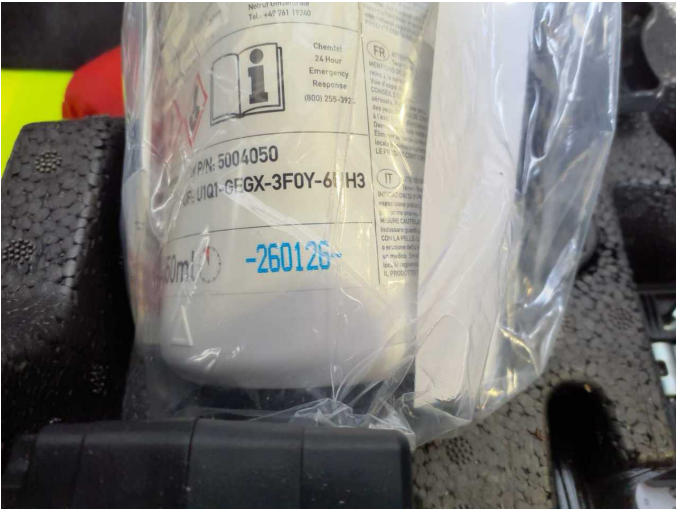


Figure 29: Misc.



Figure 30: Misc.





**Figure 31:** Misc.



**Damage 1:** Trim / covers: Boot lining - Scratch(es) - Loss in value



**Damage 1:** Trim / covers: Boot lining - Scratch(es) - Loss in value



**Damage 1:** Trim / covers: Boot lining - Scratch(es) - Loss in value



**Damage 2:** Door - front right side: Door - dent(s) - Smart repair



**Damage 2:** Door - front right side: Door - dent(s) - Smart repair





**Damage 3:** Boot lid / rear door: Trim - standard - lower - Scratched - Replace



**Damage 3:** Boot lid / rear door: Trim - standard - lower - Scratched - Replace



**Damage 3:** Boot lid / rear door: Trim - standard - lower - Scratched - Replace



**Damage 4:** Front bumper: Front bumper - Scratch(es) - Paint



**Damage 4:** Front bumper: Front bumper - Scratch(es) - Paint



**Damage 5:** Bonnet: Bonnet - Dent / paintcoat damage - Repair and paint





**Damage 5:** Bonnet: Bonnet - Dent / paintcoat damage - Repair and paint



**Damage 5:** Bonnet: Bonnet - Dent / paintcoat damage - Repair and paint



**Damage 5:** Bonnet: Bonnet - Dent / paintcoat damage - Repair and paint



**Damage 5:** Bonnet: Bonnet - Dent / paintcoat damage - Repair and paint



**Wear and tear 1:** Wheel / tyres: Wheel cover - front left side - Scratch(es)  
- No deduction



**Wear and tear 1:** Wheel / tyres: Wheel cover - front left side - Scratch(es)  
- No deduction



# Wartungshistorie

(gemäß Auftraggeber Informationen)

Fahrgestellnummer: WVVZZZ3CZNE050039

Hersteller / Modell: VOLKSWAGEN VW Passat Variant 2.0 TDI SCR DSG Business

| Datum      | KM-Stand | Beschreibung  |
|------------|----------|---|
| 18.08.2025 | 137.448  | Bremse Sonstiges; Bremsklötze vorne; Reparatur Sonstiges; Reparatur Sonstiges   |
| 25.03.2025 | 124.761  | AU; Bremse Sonstiges; Bremsklötze hinten; Bremsscheiben + Klötze h; Bremsscheiben hinten; Getriebeöl ern/prüfen; Motoröl b. Wartung; Ölfilter ern; Regelwartungsdienst; Wartung Sonstiges   |
| 12.08.2024 | 92.985   | Systemtest/Eigendiagnose  |
| 15.07.2024 | 92.985   | Bremse Sonstiges; Bremsflüssigkeit; Bremsflüssigkeit ern; Bremsklötze hinten; Bremsklötze vorne; Bremsscheiben vorne; Kraftstofffilter ern; Luftfiltereinsatz ern; Motoröl b. Wartung; Ölfilter ern; Regelwartungsdienst; Systemtest/Eigendiagnose; Wartung Sonstiges |
| 06.11.2023 | 62.533   | Motoröl b. Wartung; Ölfilter ern; Regelwartungsdienst; Wartung Sonstiges  |
| 14.04.2023 | 31.577   | Motoröl b. Wartung; Ölfilter ern; Regelwartungsdienst; Wartung Sonstiges  |