



Expertise

Protocol number: 39945899
Order No. / Reference: 24787385
Inspection date: 27 May 2025

Manufacturer: Volkswagen	Model: Passat Variant 1.4 TSI Plug-In-Hybrid DSG GTE
VIN: WVVZZZ3CZNE041108	



Vehicle details	
Manufacturer / Type / Model / Equipment	
Volkswagen Passat Variant 1.4 TSI Plug-In-Hybrid DSG GTE	
Vehicle Identification number	WVVZZZ3CZNE041108
Mileage (Read)	62,763 km
First registration	2 Mar 2022
Number of holders	1
Power / Engine displacement	115 kw / 1,395 ccm
Fuel type / Cylinder	Hybr.B/E ext. edition / 4
Gearbox / Number of gears	Automatic / 6
Type of drive	Front drive
Type of vehicle	Station wagon
Colour / colour code	Deep Black Perleffekt
Doors / Seats	5 / 5
Upholstery type	Cloth / leather combination
Colour of upholstery	Black-Anthracite
Vehicle with smoke odor	no



Vehicle details

Maintenance booklet / proof	digital proof / complete	Next maintenance in	11,000 km
Last maintenance on / at	01/2025 at 58,758 km		
Key is / should be	2 / 2	FZG documents	ZB#2 (B) was available (copy), ZB#1 (S) was not available
		Letter No.	GJ012228
Previous damage / Accident	Detectable	Repainting	None detectable
Inspection conditions	Sufficient	Lifting equipment / pit	yes
Test drive	Short drive on the company premises	Engine function test	Performed
Manufacturer key number/ type code number	0603 / BRZ 00101		
Emission standard	EURO6;WLTP;AP;PI/CI; M, N1 I	Fine dust sticker	
Permitted total weight	2,270 kg	Empty weight	

Tyres

Mounted tyres

#	Tyre size	Type of tyre	Manufacturer	Tread depth
1)	215/55 R17 94H	winter tires (with run-flat tires) on Light alloy	Pirelli	6mm / 6mm
2)	215/55 R17 94H	winter tires (with run-flat tires) on Light alloy	Pirelli	7mm / 7mm

Additional tyres

#	Tyre size	Type of tyre	Manufacturer	Tread depth
1)	215/55 R17 94V	summer tires (with run-flat tires) on Light alloy	Continental	5mm / 5mm
2)	215/55 R17 94V	summer tires (with run-flat tires) on Light alloy	Continental	7mm / 7mm

Legend: Tread depth information for tires on the left is in the first place, for tires on the right is in the second place on the axle in the direction of travel

Equipment

Standard equipment

- Driver and front passenger airbags (passenger airbag deactivation switch)
- Anti-lock braking system (ABS)
- Automatic distance control ACC "stop & go", including speed limiter
- Exterior mirrors electrically adjustable, heated, ambient lighting (automatically dimming on driver's side)
- Brake light, third
- Headlining in Mistral Grey
- e-Sound (artificially generated engine noise to inform other road users about the approach of the e-vehicle)
- LED entry/warning lights in the front doors
- Automatic headlight switching (with daytime running lights, "leaving home" function and manual "coming home" function)
- Pedestrian detection
- Transmission: 6-speed DSG (6-speed dual-clutch transmission DSG)
- Interior mirror automatically dimming
- Air Care Climatronic air conditioning system with 3-zone temperature control and allergen filter
- Front headrests (safety-optimized, length and height adjustable)
- Steering wheel: Multifunction sports steering wheel in leather, with shift paddles (gear lever knob in leather)
- Premium multifunction display with multi-color display (including: - Outside temperature - Average fuel consumption - Average speed - Distance traveled - Driving time - Gear recommendation - Speed warning - Comfort - Current fuel consumption - Range - Service - Time with extended display options, e.g.: - Digital speedometer - Digital oil temperature indicator - Light & visibility - Language - Auxiliary heating - Winter tires)
- Emergency braking assistant "Front Assist" (for automatic distance control ACC up to 210 km/h)
- Package: Light and visibility package "Plus" (LED lights in the front footwell - electrically adjustable and heated exterior mirrors, automatically dimming on the driver's side - entry/warning lights in the front doors, with LED technology - automatic headlight switching, with daytime running lights, "leaving home" function and manual "coming home" function - interior light with switch-off delay and dimming function, 2 LED reading lights each at the front and rear - interior mirror automatically dimming - illuminated make-up mirror - extendable sun visors - rain sensor)
- Tire pressure monitoring indicator (passive)
- Rear seat bench undivided, backrest asymmetrically split and foldable, with center armrest (and through-loading option)
- Keyless start system without safe lock
- Seat belts: Three-point automatic seat belt (Seat belt for middle rear seat - Seat belts for outer rear seats - Front seat belts with height adjustment and belt tensioner)
- Airbag, head airbag system for front and rear passengers (including front side airbags)
- App-Connect Wireless (Volkswagen offers three interfaces for connecting smartphones with numerous options: - Apple CarPlay - Android Auto from Google - MirrorLink)
- Cup holders (2) front
- hill start assist
- Chrome strips on the side windows
- tachometer
- Parking aid - warning signals for obstacles in the front and rear areas
- Electronic parking brake including auto-hold function
- Remote release for the trunk lid
- Front windscreen in laminated safety glass, heat and sound insulating
- Luggage compartment floor can be raised
- Interior lights with switch-off delay and dimming function (2 LED reading lights each at the front and rear)
- ISOFIX anchor points (for attaching two child seats to the rear seats, including i-Size child seats)
- Headrests (3) rear
- LED taillights
- LED headlights with daytime running lights
- Headlight range adjustment
- Front center armrest adjustable in height and length, with storage box (2 rear vents with chrome slats)
- Fatigue detection (detects signs of driver fatigue based on characteristic steering behavior, time of day, and driving duration and issues a visual and acoustic warning)
- mains charging cable for household socket
- Mesh partition
- Non-smoking version (storage compartment and 12 V socket at the front)
- Emergency call service (no registration required, service is activated upon delivery)
- Upholstery: "Business" fabric (seat centre panels of the front seats and the outer rear seats in "Weave" fabric)
- Proactive occupant protection system in conjunction with "Front Assist" (detects critical traffic situations with increased accident potential - prepares vehicle occupants and the vehicle for a possible accident by tightening the front seat belts and securing the driver and front passenger and closing open windows and the sunroof except for a gap)



- Seats: Front seats height adjustable (ergoComfort seat on the driver's side - with electric backrest adjustment)
- Start-stop system (with brake energy recovery)
- 12-V socket on the rear center console (and in the luggage compartment)
- textile floor mats (front and rear)
- Warning sound and light for unfastened seat belts at the front and rear

Extra equipment

- Anti-theft alarm system (interior monitoring, back-up horn and tow-away protection - illuminated make-up mirror in the sun visors, extendable sun visors)
- Cable for AC charging station (including standard mains charging cable for household socket)
- Finish: pearl effect
- Steering wheel: Multifunction sports steering wheel in leather, heated, with shift paddles
- Package: "Business Premium" package including navigation (from Business) (2 USB-C ports in the front, 1 USB-C charging socket in the rear, 230 V socket, App-Connect including wireless, Apple CarPlay, Android Auto, "Travel Assist" driving assistant and "Lane Assist" lane keeping assistant, Air Care Climatronic with 3-zone temperature control, allergen filter and rear controls, electric lumbar supports on the driver's side, massage function on the driver's side, "Rear View" reversing camera, heated windshield washer nozzles, Comfort telephone interface, inductive charging function, heated front seats)
- Package: Winter (automatically heated windshield washer nozzles - heated front seats)
- Proactive occupant protection system and lane change assistant "Side Assist" (Proactive occupant protection system in conjunction with "Front Assist" and "Side Assist" - lane change assistant "Side Assist" and rear traffic assistant)
- Wheels: Tire Mobility Set no longer available
- Keyless start system with safe security
- Seats: ergoComfort seat with 14-way adjustment, memory & massage on driver's side in conjunction with Business package (electrically folding exterior mirrors, dimming on driver's side, ambient lighting and memory - lumbar supports electrically adjustable at the front, massage function on driver's side - front seats electrically adjustable, ergoComfort seat on driver's side, with memory function and comfortable entry)

- Radio accessories: Digital radio reception DAB+ (reception of digitally broadcast radio stations and traffic information in addition to the analogue station offering - reception depends on the local availability of digital networks - expanded range of radio programs - improved reception performance)
- Power steering (electromechanical, speed-dependent)
- Seats: Comfort seats in the front
- Seats: Lumbar supports in front (driver's side electrically adjustable)
- Lane Assist lane keeping assistant (warns with corrective steering intervention if the vehicle unintentionally leaves the lane)
- Bumpers in body color
- Telephone interface
- First aid kit, warning triangle and safety vest
- Electronic immobilizer

- Driving profile selection (possibility of setting different vehicle settings: Comfort, Normal, Sport, Eco, Individual - customizable vehicle systems are: engine, adaptive chassis control DCC, DSG, steering, start-stop system, cornering lights and "Dynamic Light Assist", automatic distance control ACC, air conditioning)
- Navigation system "Discover Pro" including "Streaming & Internet" (4x20W app-con, wireless digital cockpit, operation with proximity sensor, double tuner with phase-variant, DAB vehicle menu, speed, volume adjustment, gesture control, 32 GB SSD hard drive, map, 2D display, sound control, 3-way TFT display with touch screen, MP3 navigation for Europe, voice control, telephone contact address, telephone interface "Comfort" with inductive charging, 2 USB iPod/iPhone traffic signs, "We Connect Plus" including "We Connect" destination guidance, dynamic RDS TMC tuner, mobile key pre-installation, for vehicle with Smart)
- Package: "Design and Comfort" in conjunction with "Business Premium" (roof rails silver anodized - door sills front and rear in stainless steel - windshield washer nozzles automatically heated at the front - seat center panels of the front seats and the outer rear seats in "ArtVelours", seat bolsters in "Vienna" leather - sports comfort seats at the front - heated front seats)
- Wheels: 4 "Nivelles" 7 J x 17 alloy wheels (in black, high-sheen surface - AirStop tires 215/55 R 17, rolling resistance class A - wheel locks with extended anti-theft protection - rear disc brakes, brake callipers in blue (only for GTE))
- Voice control
- Laminated safety glass, sound-insulating for front and side windows (including rear side windows and rear window tinted)



Brief expert findings

Documents submitted	At the time of the inspection, the registration certificate part 2 (letter) was available, but the registration certificate part 1 (certificate) was not available. (Copy)
VIN comparison	The vehicle identification number (VIN) was read and the undersigned verified that it matched the documents submitted during the inspection.
Inspection	The inspection conditions were sufficient for the assessment of the vehicle. Lifting equipment and a pit were available for examining the vehicle.
Test drive	A short maneuvering and shunting trip was carried out on the company premises.
Engine function test	An engine test run was performed.

Value reducing factors

No.	Component group	Description
1	Trim / covers	Door trim - rear left side - Soiled - Clean
2	Sill - right side	Sill - Scratch(es) - Smart repair
3	Engine	Engine - Leaking - Perform diagnosis
4	Rear bumper	Rear bumper - Scratch(es) - Paint
5	Bonnet	Bonnet - Dent / paintcoat damage - Paint

Wear and tear

No.	Component group	Description
1	Front bumper	Front bumper - Stone chips - No deduction
2	Door - front right side	Door - Scratch(es) - No deduction
3	Door - rear right side	Door - Scratch(es) - No deduction
4	Door - front left side	Door edge - Scratch(es) - No deduction
5	Vehicle glazing	Windscreen - Stone chips - No deduction

The vehicle shows signs of wear commensurate with its age and use.

Previous damages

No.	Previous damage	Extent of damage (Net)
1	Front, Provided by user / customer, from 25 Jan 2023	2.180,28 €

Order/Scope of order

The order was placed to prepare a sales report for the vehicle described. This includes the following:

- Description of core relevant information about the vehicle
- Documentation of equipment features
(Delivery by third-party service providers)
- Documentation of damage, defects, missing parts
- Documentation of previous damage, unrepaired previous damage, repainting
- a brief visual or functional inspection of the equipment details if possible.
(Functional tests of driver assistance systems are not included in the scope of services!)
- a photo documentation of the vehicle



Basis for the order

This product is based on the Alphabet Fuhrpark GmbH guidelines for vehicle returns and valuations. The expert makes the explicit findings in each individual case objectively within the framework of the specified standards based on his or her own expertise.

The vehicle inspection takes place in a disassembled state.

Damage or defects that can only be detected during disassembly/diagnosis work or through advanced knowledge remain within the scope of the prognosis risk. An extended risk exists for concealed defects caused by fraudulent deception and not identifiable by the expert.

Damage or defects resulting from normal use or wear and tear of the vehicle will be accepted according to the applicable standard.

There was no explicit identification or monetary consideration of the expected features within the product.

Features which in their nature and severity slightly exceed normal use but do not constitute unacceptable damage will be documented and identified under signs of use if necessary.

Damage or defects which, according to the underlying standard, can no longer be attributed to normal use or wear and tear are listed in the product under "Depreciating Factors".

Depending on the product specification, a monetary ID can be provided. If this takes place, the costs can be 100% d or pro rata depending on the vehicle's age and mileage.

Previous damages

According to available information previous damages were repaired at the vehicle. Traces of repairs, which allow conclusions about the area of repair, were not recognizable during the inspection.

Comments

- Winterradsatz ist kein Bestandteil des Auslieferungsumfangs



Figure 1: Diagonal front (left)



Figure 2: Diagonal front (right)



Figure 3: Diagonal rear (left)



Figure 4: Diagonal rear (right)



Figure 5: Interior - front



Figure 6: Interior - rear



Figure 7: Instrument cluster



Figure 8: Instrument panel



Figure 9: interior 360° view



Figure 10: Cargo area

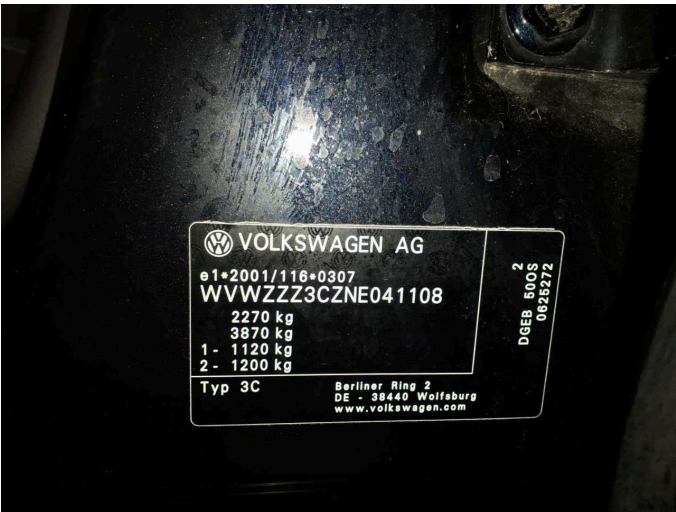


Figure 11: VIN



Figure 12: Mounted tyres

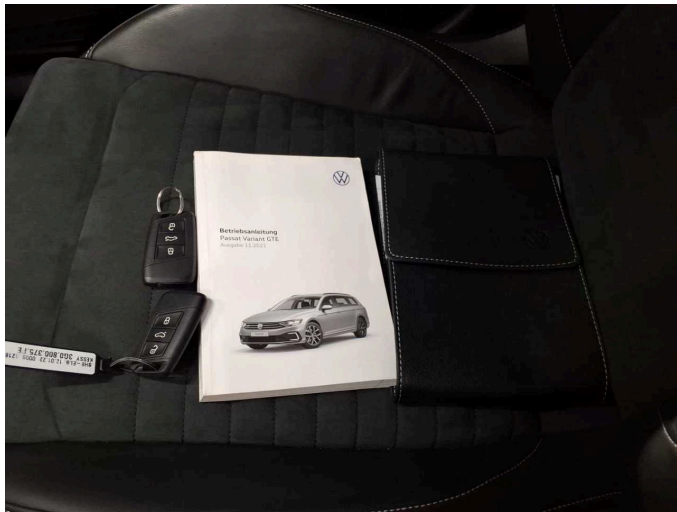


Figure 13: Documents

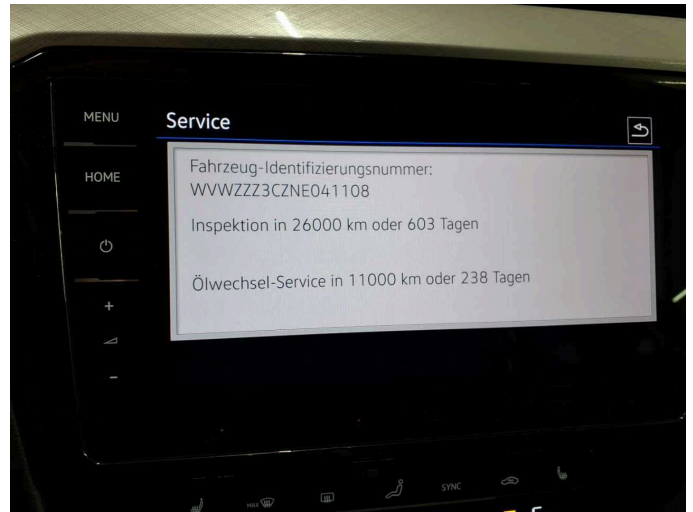


Figure 14: Documents



Figure 15: Documents



Figure 16: Additional tyres



Figure 17: Navigation



Figure 18: Misc.



Figure 19: Misc.



Figure 20: Misc.



Figure 21: Misc.



Figure 22: Misc.



Figure 23: Misc.



Figure 24: Misc.



Damage 1: Trim / covers: Door trim - rear left side - Soiled - Clean



Damage 1: Trim / covers: Door trim - rear left side - Soiled - Clean



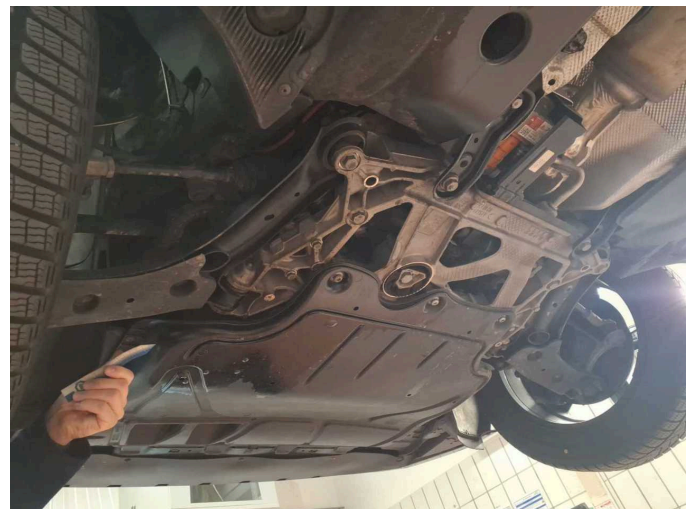
Damage 2: Sill - right side: Sill - Scratch(es) - Smart repair



Damage 2: Sill - right side: Sill - Scratch(es) - Smart repair



Damage 3: Engine: Engine - Leaking - Perform diagnosis



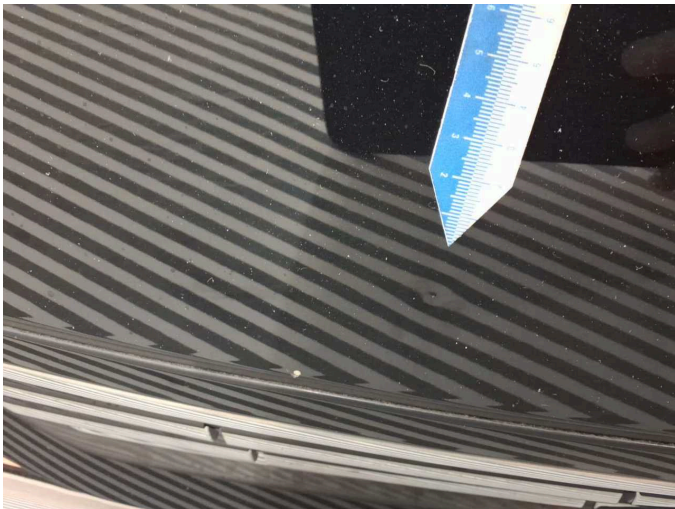
Damage 3: Engine: Engine - Leaking - Perform diagnosis



Damage 4: Rear bumper: Rear bumper - Scratch(es) - Paint



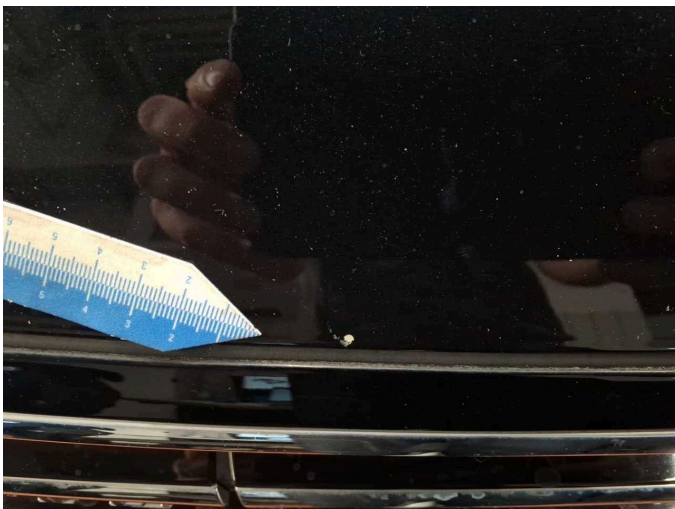
Damage 4: Rear bumper: Rear bumper - Scratch(es) - Paint



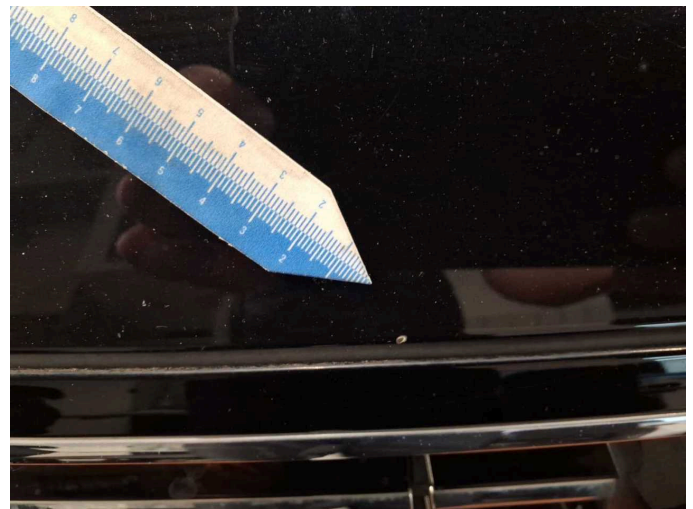
Damage 5: Bonnet: Bonnet - Dent / paintcoat damage - Paint



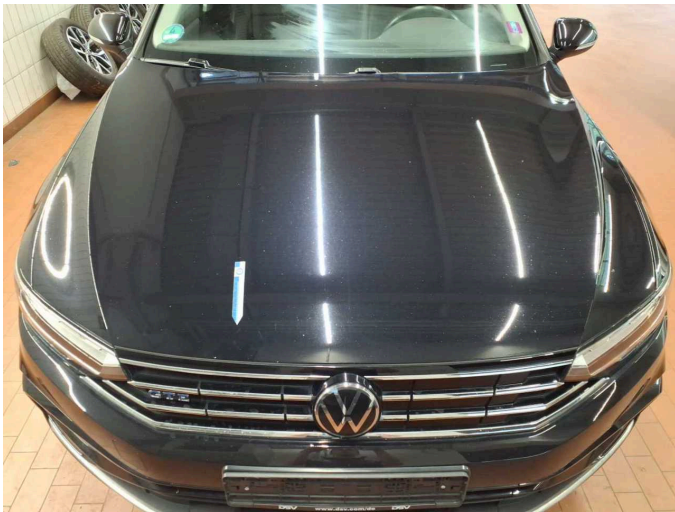
Damage 5: Bonnet: Bonnet - Dent / paintcoat damage - Paint



Damage 5: Bonnet: Bonnet - Dent / paintcoat damage - Paint



Damage 5: Bonnet: Bonnet - Dent / paintcoat damage - Paint



Damage 5: Bonnet: Bonnet - Dent / paintcoat damage - Paint