



Expertise

Protocol number: 41510002  
Order No. / Reference: 25226615  
Inspection date: 15 Sept 2025

Manufacturer: Volkswagen	Model: Passat Variant 1.4 TSI Plug-In-Hybrid DSG GTE
VIN: WVVZZZ3CZME128067	



Vehicle details	
Manufacturer / Type / Model / Equipment	
Volkswagen Passat Variant 1.4 TSI Plug-In-Hybrid DSG GTE	
Vehicle Identification number	WVVZZZ3CZME128067
Mileage (Read)	85,508 km
First registration	17 Jun 2021
Number of holders	1
Next periodical technical inspection	06/2026
(Report on hand)	
Power / Engine displacement	115 kw / 1,395 ccm
Fuel type / Cylinder	Hybr.B/E ext. edition / 4
Gearbox / Number of gears	Automatic / 6
Type of drive	Front drive
Type of vehicle	Station wagon
Colour / colour code	Deep Black Perleffekt (C9X)
Doors / Seats	5 / 5
Upholstery type	Cloth / leather combination
Colour of upholstery	Black-Anthracite
Vehicle with smoke odor	no



Vehicle details

Maintenance booklet / proof	digital proof / complete	Next maintenance in	-1,000 km
Last maintenance on / at	11/2024 at 69,420 km		
Key is / should be	2 / 2	FZG documents	ZB#2 (B) was available (copy), ZB#1 (S) was not available
		Letter No.	GC329011
Previous damage / Accident	Detectable	Repainting	Detectable
Inspection conditions	sufficient	Lifting equipment / pit	yes
Test drive	short drive on the company premises	Engine function test	Performed
Manufacturer key number/ type code number	0603 / BRZ 00077		
Emission standard	EURO6;WLTP;AP;PI/CI; M, N1 I	Fine dust sticker	
Permitted total weight	2,270 kg	Empty weight	

Tyres

Mounted tyres

#	Tyre size	Type of tyre	Manufacturer	Tread depth
1)	215/55 R17 94W	Summer tyres on Light alloy	Pirelli	6mm / 6mm
2)	215/55 R17 94W	Summer tyres on Light alloy	Pirelli	7mm / 7mm

Additional tyres

#	Tyre size	Type of tyre	Manufacturer	Tread depth
1)	215/55 R17 94H	Winter tires (with run-flat tires) on Light alloy	Pirelli	6mm / 6mm
2)	215/55 R17 94H	Winter tires (with run-flat tires) on Light alloy	Pirelli	7mm / 7mm

Legend: Tread depth information for tires on the left is in the first place, for tires on the right is in the second place on the axle in the direction of travel

## Equipment

### Standard equipment

- Driver and front passenger airbags (passenger airbag deactivation switch)
- Anti-lock braking system (ABS)
- Automatic distance control ACC "stop & go", including speed limiter
- Exterior mirrors electrically adjustable, heated, ambient lighting (automatically dimming on driver's side)
- Brake light, third
- Headlining in Mistral Grey
- tachometer
- Parking aid - warning signals for obstacles in the front and rear areas
- Electronic parking brake including auto-hold function
- Remote release for the trunk lid
- Front windscreen in laminated safety glass, heat and sound insulating
- Luggage compartment floor can be raised
- Rear window heated
- Rear window wiper
- Interior mirror automatically dimming
- ISOFIX anchor points (for attaching two child seats to the rear seats, including i-Size child seats)
- Air Care Climatronic air conditioning system with 3-zone temperature control and active combination filter
- LED taillights
- Steering wheel: Multifunction sports steering wheel in leather, with shift paddles (gear lever knob in leather)
- Premium multifunction display with multi-color display (including: - Outside temperature - Average fuel consumption - Average speed - Distance traveled - Driving time - Gear recommendation - Speed warning - Comfort - Current fuel consumption - Range - Service - Time with extended display options, e.g.: - Digital speedometer - Digital oil temperature indicator - Light & visibility - Language - Auxiliary heating - Winter tires)
- Mains charging cable for household socket
- Mesh partition
- Non-smoking version (storage compartment and 12 V socket at the front)
- Emergency braking assistant "Front Assist" (for automatic distance control ACC up to 210 km/h)
- Emergency call service (no registration required, service is activated upon delivery)
- Upholstery: "Business" fabric (front seat center panels and outer rear seats in "Weave" fabric)
- Airbag, head airbag system for front and rear passengers (including front side airbags)
- App-Connect Wireless (Volkswagen offers three interfaces for connecting smartphones with numerous options: - Apple CarPlay - Android Auto from Google - MirrorLink)
- Cup holders (2) front
- Hill start assist
- Chrome strips on the side windows
- Roof rails black
- e-Sound (artificially generated engine noise to inform other road users about the approach of the e-vehicle)
- LED entry/warning lights in the front doors
- Automatic headlight switching (with daytime running lights, "leaving home" function and manual "coming home" function)
- Pedestrian detection
- Transmission: 6-speed DSG (6-speed dual-clutch transmission DSG)
- Interior lights with switch-off delay and dimming function (2 LED reading lights each at the front and rear)
- Cable for AC charging station (including standard mains charging cable for household socket)
- Headrests (3) rear
- Front headrests (safety-optimized, length and height adjustable)
- Headlight range adjustment
- Front center armrest, height and length adjustable, with storage box (2 rear air vents with chrome slats)
- Fatigue detection (detects signs of driver fatigue based on characteristic steering behavior, time of day, and driving duration and issues a visual and acoustic warning)
- "Discover Media" navigation system including "Streaming & Internet" (4x20 watt user interface with proximity sensor, dual tuner with phase diversity, vehicle menu speed, volume adjustment, 2D map display, tone control, triple TFT display with touchscreen operation, "Discover Media" navigation system including "Streaming & Internet," MP3 radio, telephone contact address for navigation, telephone interface, 2 USB ports also for iPod/iPhone, traffic sign recognition, "VW Media Control," We Connect Plus, 3 years, including We Connect route guidance, dynamic RDS TMC tuner)
- Package: Light and Sight Package "Plus" (LED lights in the front footwells, electrically adjustable and heated exterior mirrors, automatically dimming on the driver's side, LED entry/warning lights in the front doors, automatic headlight control with daytime running lights, "leaving home" function, and manual "coming home" function, interior lights with delayed switch-off and dimming function, 2 LED reading lights each at the front and rear, auto-dimming interior mirror, illuminated vanity mirror, retractable sun visors, rain sensor)
- Tire pressure monitoring indicator (passive)



- Proactive occupant protection system in conjunction with "Front Assist" (detects critical traffic situations with increased accident potential - prepares vehicle occupants and the vehicle for a possible accident by tightening the front seat belts, restraining the driver and front passenger, and closing open windows and the sunroof except for a crack)
  - Radio accessories: Digital radio reception DAB+ (reception of digitally broadcast radio stations and traffic information in addition to the analogue station offering - reception depends on the local availability of digital networks - expanded range of radio programs - improved reception performance)
  - Keyless start system without safe lock
  - Power steering (electromechanical, speed-dependent)
  - Seat belts: Three-point automatic seat belt (Seat belt for middle rear seat - Seat belts for outer rear seats - Front seat belts with height adjustment and belt tensioner)
  - Seats: Height-adjustable front seats (ergoComfort seat on the driver's side - with electric backrest adjustment)
  - Start-stop system (with brake energy recovery)
  - Bumpers in body color
  - Telephone interface
  - First aid kit, warning triangle and safety vest
  - Electronic immobilizer
  - Central locking with remote control
- Wheels: 4 "Montpellier" 7 J x 17 alloy wheels in black, high-sheen finish (rolling resistance optimized - AirStop tires 215/55 R 17 - wheel locks with enhanced anti-theft protection)
  - Rear seat bench undivided, backrest asymmetrically split and foldable, with center armrest (and through-loading option)
  - Seats: Comfort seats in the front
  - Seats: Lumbar supports in front (driver's side electrically adjustable)
  - Lane Assist (warns with corrective steering intervention if the vehicle unintentionally leaves the lane)
  - 12-V socket on the rear center console (and in the luggage compartment)
  - Textile floor mats (front and rear)
  - Warning sound and light for unfastened seat belts at the front and rear

### Extra equipment

- Exterior mirrors with ambient lighting and passenger mirror lowering (folding and heated - dimming on driver's side)
  - Decorative inlay: precious wood "Silver Birch" (for instrument panel and center console)
  - Removable luggage compartment protective mat (back of the rear seat backrest with black rubber covering)
  - Head-up display
  - IQ.LIGHT - LED Matrix Headlights (GTE) (Dynamic Light Assist for LED Matrix Headlights - LED taillights with dynamic indicators - LED headlights with LED daytime running lights, cornering lights, and dynamic indicators - Dynamic headlight range control with dynamic cornering lights - Rear fog lights on both sides, reversing lights on both sides)
  - Package: "Business Premium" package including navigation (from Business) (2 USB-C ports in the front, USB-C charging socket in the rear, 230V socket App-Connect including wireless, Apple CarPlay, Android Auto, "Travel Assist" driving assistant and "Lane Assist" lane keeping assistant, Air Care Climatronic with 3-zone temperature control, active combo filter and rear controls, electric lumbar support on the driver's side, massage function on the driver's side, "Rear View" reversing camera, heated windshield washer nozzles, Comfort telephone interface, inductive charging function, heated front seats)
- Headlining in titanium black
  - Roof rails, silver anodized, with 2 support bars silver anodized (with anti-theft protection and enclosed in a storage bag)
  - Anti-theft alarm system (interior monitoring, backup horn and tow-away protection - illuminated vanity mirror in the sun visors, extendable sun visors)
  - Tailgate with electric opening and closing, electric opening for luggage compartment cover (extendable and removable luggage compartment cover, with electric opening - tailgate with electric opening and closing)
  - Finish: pearl effect
  - "Discover Pro" navigation system including "Streaming & Internet" (4x20W app-controlled, wireless digital cockpit, operation with proximity sensor, dual tuner with phase shift, DAB vehicle menu, speed, volume adjustment, gesture control, 32GB SSD hard drive, 2D map display, sound control, triple TFT display with touchscreen, MP3 navigation for Europe, voice control, telephone contact address, telephone interface, "Comfort" with inductive charging, 2 USB iPod/iPhone traffic signs, "We Connect Plus" including "We Connect" destination guidance, dynamic RDS TMC tuner, pre-programmed mobile key, for vehicle, Smart.)





- Package: Ambient Lighting "Plus" (multi-colored ambient lighting - LED entry/warning lights in all doors - interior lights with switch-off delay and dimming function, 2 LED reading lights each at the front and rear)
- Package: Winter additionally with heated outer rear seats (windscreen washer nozzles automatically heated - front seats/rear seats heated)
- Wheels: Tire Mobility Set no longer available
- Keyless start system with safe security
- Sun blinds on the rear door windows
- Auxiliary heating and ventilation (with radio remote control and timer)
- Package: "Design and Comfort" in conjunction with "Business Premium" (Silver anodized roof rails - Stainless steel front and rear door sills - Automatically heated windshield washer nozzles - Front seat center panels and outer rear seats in "ArtVelours" and inner seat bolsters in "Vienna" leather - Front sport comfort seats - Heated front seats)
- Panoramic tilt/slide roof (with rear panoramic roof)
- Smoking version (ashtray at the front - cigarette lighter at the front)
- Rear side windows and rear window tinted
- Voice control
- Preparation for online fleet management services

### Brief expert findings

Documents submitted	At the time of the inspection, the registration certificate Part 2 (letter) was available, but the registration certificate Part 1 (certificate) was not. (Copy)
VIN comparison	The vehicle identification number (VIN) was read from the vehicle and its conformity with the submitted documents was verified during the inspection by the undersigned.
Inspection	The inspection conditions were sufficient for the assessment of the vehicle. Lifting equipment and a pit were available for examining the vehicle.
Test drive	A short maneuvering and shunting trip was carried out on the company premises.
Engine function test	An engine test run was performed.

### Value reducing factors

No.	Component group	Description
1	Door - front right side	Brightware - lower - Loose - Un- / install
2	Door - front right side	Brightware - upper - Damaged - Replace
3	Door - front left side	Door edge - Scratch(es) - Smart repair
4	Front bumper	Bumper - front left side (Blende) - Scratched - Replace
5	Front bumper	Bumper - front right side (Blende) - Scratched - Replace
6	Sill - left side	Trim - Scratch(es) - Smart repair
7	Mudguard - left side	Mudguard - left side - Scratch(es) - Smart repair
8	Side panel - rear left side	Side panel - Scratch(es) - Smart repair
9	Side panel - rear left side	Sill - Scratch(es) - Smart repair
10	Wheel / tyres	Alloy rim - rear right side - Scratched - Loss in value
11	Wheel / tyres	Alloy rim - front right side - Scratched - Loss in value
12	Misc.	Inspection / maintenance - Due - Perform
13	Front bumper	Front bumper - Scratched - Repair and paint
14	Rear bumper	Rear bumper - Scratched - Repair and paint
15	Boot lid / rear door	Boot lid - Dent / paintcoat damage - Repair and paint
16	Bonnet	Bonnet - Scratch(es) - Paint
17	Door - front right side	Door - Dent / paintcoat damage - Repair and paint
18	Roof	Roof - Corrosion - Paint
19	Door - rear right side	Door - dent(s) - Repair and paint

### Wear and tear



No.	Component group	Description
1	2nd wheel set	1 alloy rim (Kein Teil der Ausstattung) - Scratched - No deduction
2	Side panel - rear right side	Sill - Scratch(es) - No deduction
3	Trim / covers	Boot lid - interior trim - Scratch(es) - No deduction
4	Body	Body - Scratch(es)
5	Vehicle glazing	Windscreen - Stone chips - No deduction
The vehicle shows signs of wear commensurate with its age and use.		

## Previous damages

No.	Previous damage	Extent of damage (Net)
1	Side right, Provided by user / customer, from 21 Feb 2023	2.730,73 €

## Repainting

No.	Repainting
1	Side panel - rear right side, Professionally carried out, Invoice of repair done Non-existent
2	Door - rear right side, Professionally carried out, Invoice of repair done Non-existent

## Paint coat thickness measurement

Side panel - rear right side	352 µm	Door - rear right side	193 µm
------------------------------	--------	------------------------	--------

## Order/Scope of order

- The order was placed to prepare a sales report for the vehicle described. This includes the following:
- Description of core relevant information about the vehicle
  - Documentation of equipment features  
*(Delivery by third-party service providers)*
  - Documentation of damage, defects, missing parts
  - Documentation of previous damage, unrepaired previous damage, repainting
  - a brief visual or functional inspection of the equipment details if possible.  
*(Functional tests of driver assistance systems are not included in the scope of services!)*
  - a photo documentation of the vehicle



## Basis for the order

This product is based on the Alphabet Fuhrpark GmbH guidelines for vehicle returns and valuations. The expert makes the explicit findings in each individual case objectively within the framework of the specified standards based on his or her own expertise.

The vehicle inspection takes place in a disassembled state.

Damage or defects that can only be detected during disassembly/diagnosis work or through advanced knowledge remain within the scope of the prognosis risk. An extended risk exists for concealed defects caused by fraudulent deception and not identifiable by the expert.

Damage or defects resulting from normal use or wear and tear of the vehicle will be accepted according to the applicable standard.

There was no explicit identification or monetary consideration of the expected features within the product.

Features which in their nature and severity slightly exceed normal use but do not constitute unacceptable damage will be documented and identified under signs of use if necessary.

Damage or defects which, according to the underlying standard, can no longer be attributed to normal use or wear and tear are listed in the product under "Depreciating Factors".

Depending on the product specification, a monetary ID can be provided. If this takes place, the costs can be 100% d or pro rata depending on the vehicle's age and mileage.

## Previous damages

According to available information previous damages were repaired at the vehicle. Traces of repairs, which allow conclusions about the area of repair, were not recognizable during the inspection.

## Comments

- Winterradsatz ist kein Bestandteil des Auslieferungsumfangs.



Figure 1: Diagonal front (left)



Figure 2: Diagonal front (right)



Figure 3: Diagonal rear (left)



Figure 4: Diagonal rear (right)



Figure 5: Interior - front



Figure 6: Interior - rear





Figure 7: Instrument cluster



Figure 8: Instrument panel



Figure 9: Interior 360° view



Figure 10: Cargo area

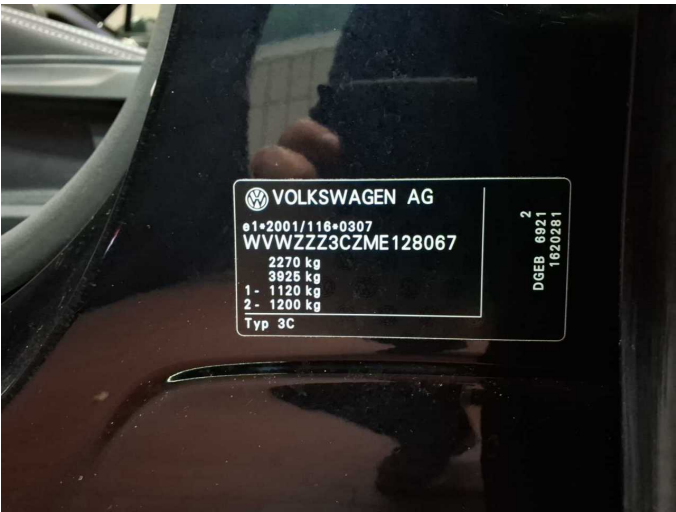


Figure 11: VIN



Figure 12: Mounted tyres





Figure 13: Documents

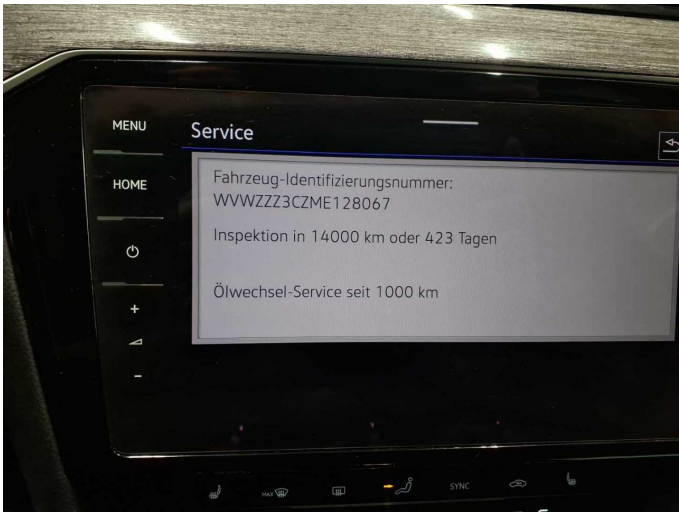


Figure 14: Documents



Figure 15: Documents



Figure 16: Documents



Figure 17: Additional tyres



Figure 18: Navigation





Figure 19: Misc.



Figure 20: Misc.



Figure 21: Misc.



Figure 22: Misc.



Figure 23: Misc.



Figure 24: Misc.





Figure 25: Misc.



Figure 26: Misc.



Figure 27: Misc.



Figure 28: Misc.

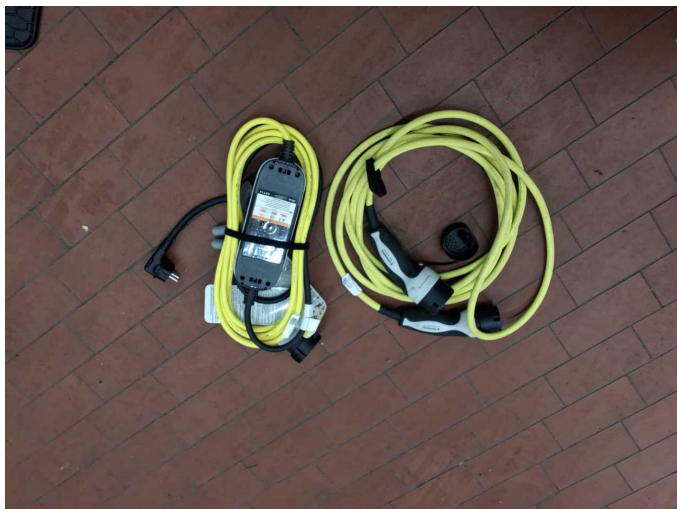


Figure 29: Misc.



Figure 30: Misc.





Figure 31: Misc.



Figure 32: Misc.



Figure 33: Misc.



Figure 34: Misc.



Figure 35: Misc.



Figure 36: Misc.





**Figure 37:** Misc.



**Damage 1:** Door - front right side: Brightware - lower - Loose - Un- / install



**Damage 1:** Door - front right side: Brightware - lower - Loose - Un- / install



**Damage 1:** Door - front right side: Brightware - lower - Loose - Un- / install



**Damage 2:** Door - front right side: Brightware - upper - Damaged - Replace

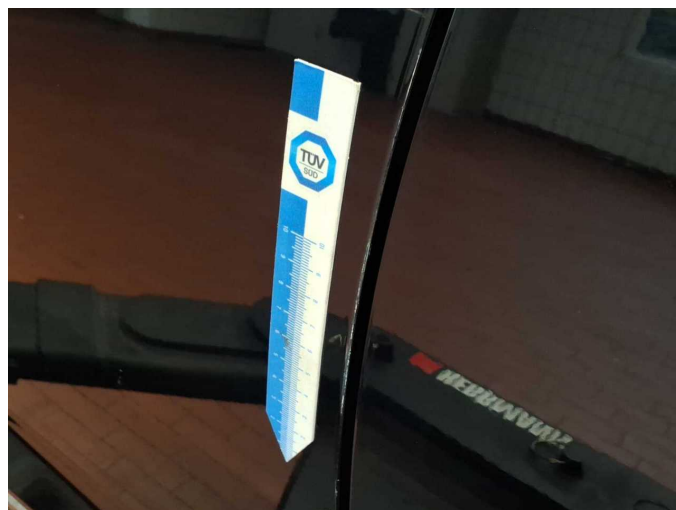


**Damage 2:** Door - front right side: Brightware - upper - Damaged - Replace





**Damage 3:** Door - front left side: Door edge - Scratch(es) - Smart repair



**Damage 3:** Door - front left side: Door edge - Scratch(es) - Smart repair



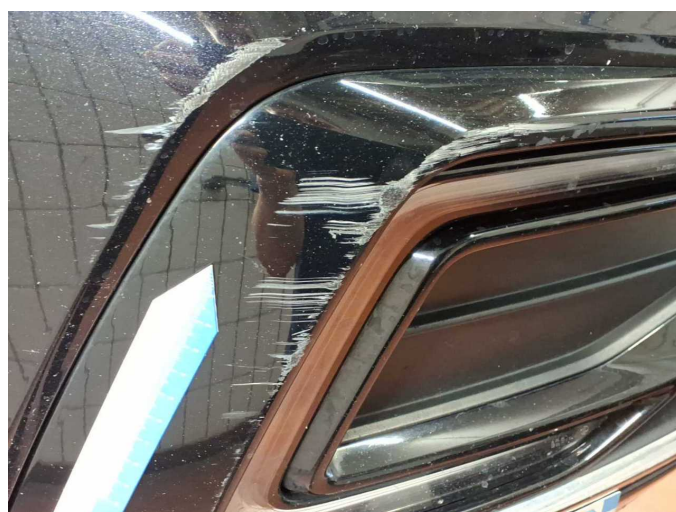
**Damage 4:** Front bumper: Bumper - front left side (Blende) - Scratched - Replace



**Damage 4:** Front bumper: Bumper - front left side (Blende) - Scratched - Replace



**Damage 5:** Front bumper: Bumper - front right side (Blende) - Scratched - Replace



**Damage 5:** Front bumper: Bumper - front right side (Blende) - Scratched - Replace





**Damage 5:** Front bumper: Bumper - front right side (Blende) - Scratched - Replace



**Damage 6:** Sill - left side: Trim - Scratch(es) - Smart repair



**Damage 6:** Sill - left side: Trim - Scratch(es) - Smart repair



**Damage 7:** Mudguard - left side: Mudguard - left side - Scratch(es) - Smart repair

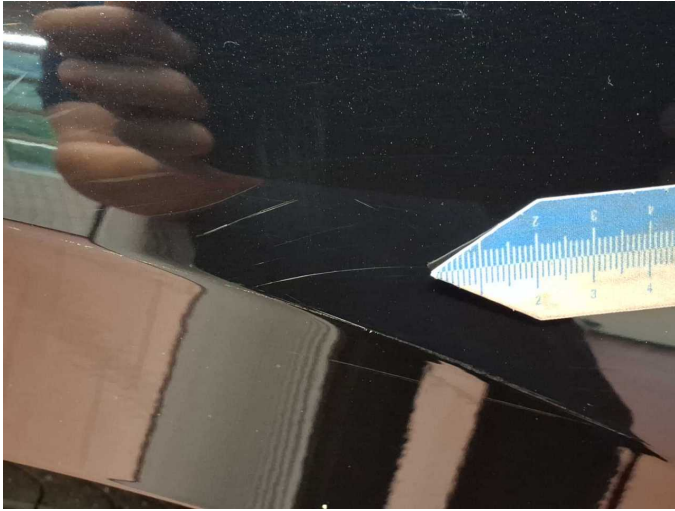


**Damage 7:** Mudguard - left side: Mudguard - left side - Scratch(es) - Smart repair

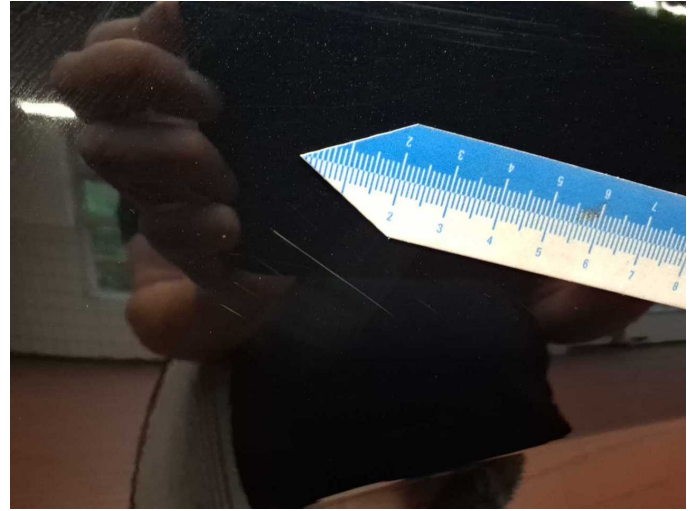


**Damage 8:** Side panel - rear left side: Side panel - Scratch(es) - Smart repair





**Damage 8:** Side panel - rear left side: Side panel - Scratch(es) - Smart repair



**Damage 8:** Side panel - rear left side: Side panel - Scratch(es) - Smart repair



**Damage 9:** Side panel - rear left side: Sill - Scratch(es) - Smart repair



**Damage 9:** Side panel - rear left side: Sill - Scratch(es) - Smart repair



**Damage 10:** Wheel / tyres: Alloy rim - rear right side - Scratched - Loss in value



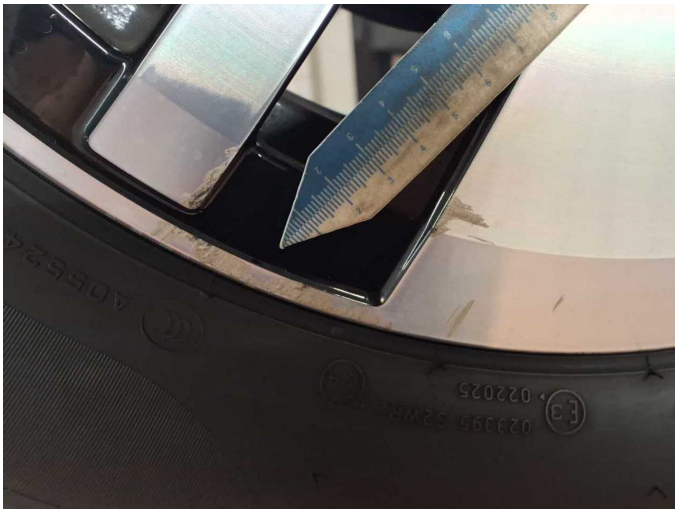
**Damage 10:** Wheel / tyres: Alloy rim - rear right side - Scratched - Loss in value



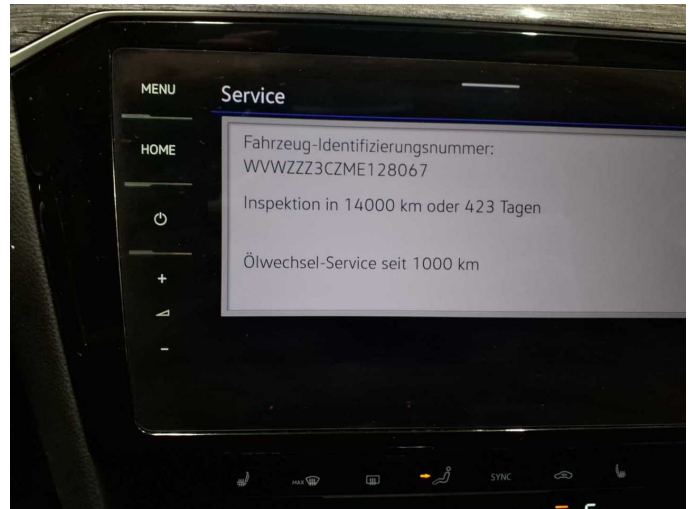
**Damage 11:** Wheel / tyres: Alloy rim - front right side - Scratched - Loss in value



**Damage 11:** Wheel / tyres: Alloy rim - front right side - Scratched - Loss in value



**Damage 11:** Wheel / tyres: Alloy rim - front right side - Scratched - Loss in value



**Damage 12:** Misc.: Inspection / maintenance - Due - Perform



**Damage 13:** Front bumper: Front bumper - Scratched - Repair and paint



**Damage 13:** Front bumper: Front bumper - Scratched - Repair and paint





**Damage 13:** Front bumper: Front bumper - Scratched - Repair and paint



**Damage 13:** Front bumper: Front bumper - Scratched - Repair and paint



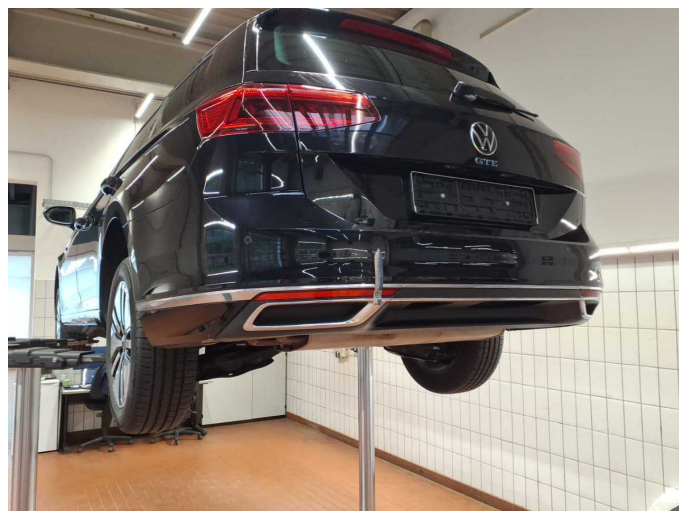
**Damage 13:** Front bumper: Front bumper - Scratched - Repair and paint



**Damage 13:** Front bumper: Front bumper - Scratched - Repair and paint

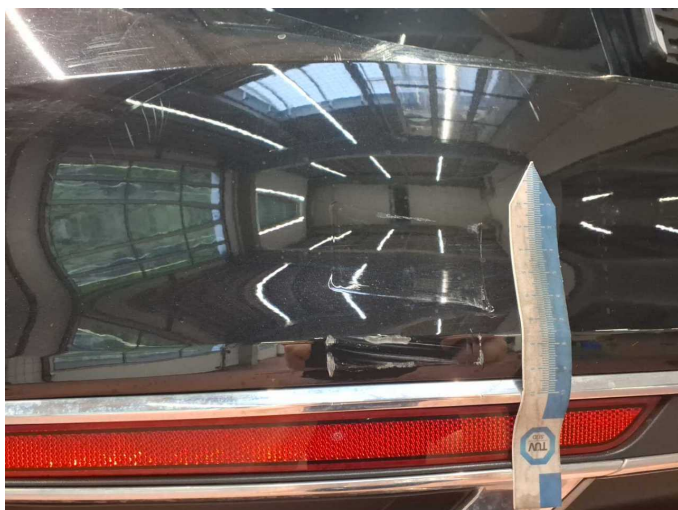


**Damage 13:** Front bumper: Front bumper - Scratched - Repair and paint



**Damage 14:** Rear bumper: Rear bumper - Scratched - Repair and paint





**Damage 14:** Rear bumper: Rear bumper - Scratched - Repair and paint



**Damage 14:** Rear bumper: Rear bumper - Scratched - Repair and paint



**Damage 14:** Rear bumper: Rear bumper - Scratched - Repair and paint



**Damage 14:** Rear bumper: Rear bumper - Scratched - Repair and paint



**Damage 15:** Boot lid / rear door: Boot lid - Dent / paintcoat damage - Repair and paint

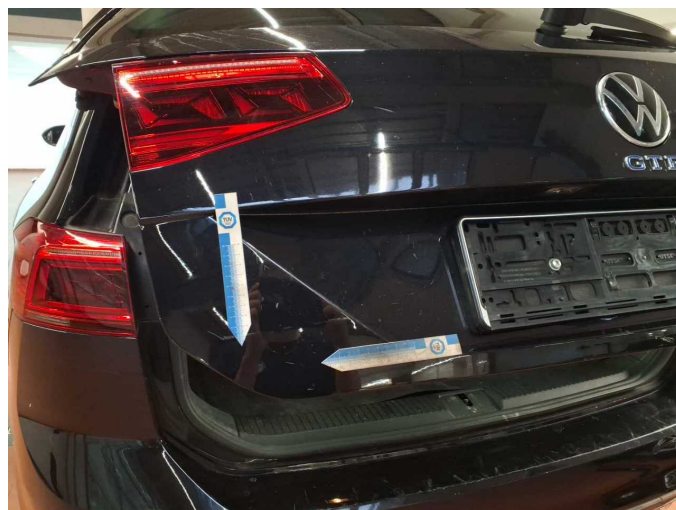


**Damage 15:** Boot lid / rear door: Boot lid - Dent / paintcoat damage - Repair and paint





**Damage 15:** Boot lid / rear door: Boot lid - Dent / paintcoat damage - Repair and paint



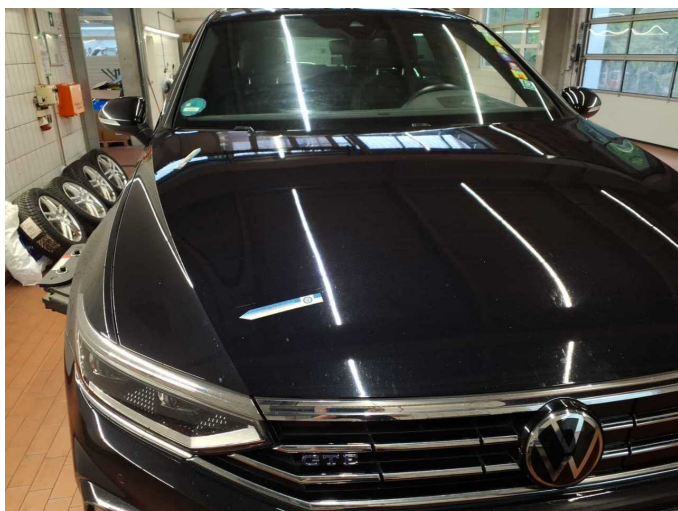
**Damage 15:** Boot lid / rear door: Boot lid - Dent / paintcoat damage - Repair and paint



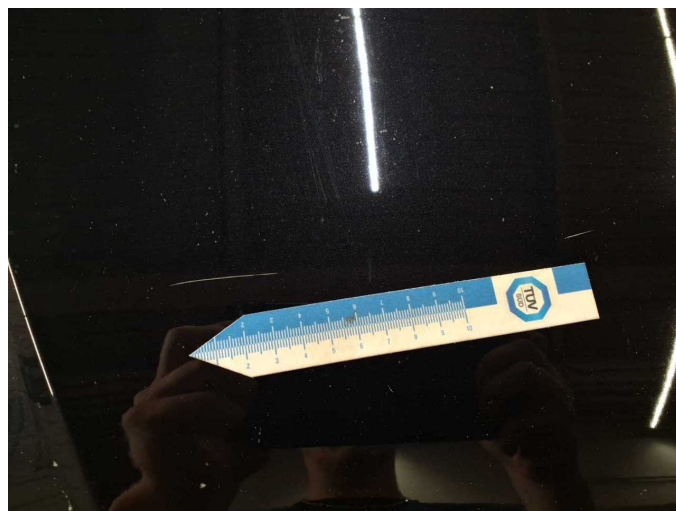
**Damage 15:** Boot lid / rear door: Boot lid - Dent / paintcoat damage - Repair and paint



**Damage 15:** Boot lid / rear door: Boot lid - Dent / paintcoat damage - Repair and paint



**Damage 16:** Bonnet: Bonnet - Scratch(es) - Paint



**Damage 16:** Bonnet: Bonnet - Scratch(es) - Paint





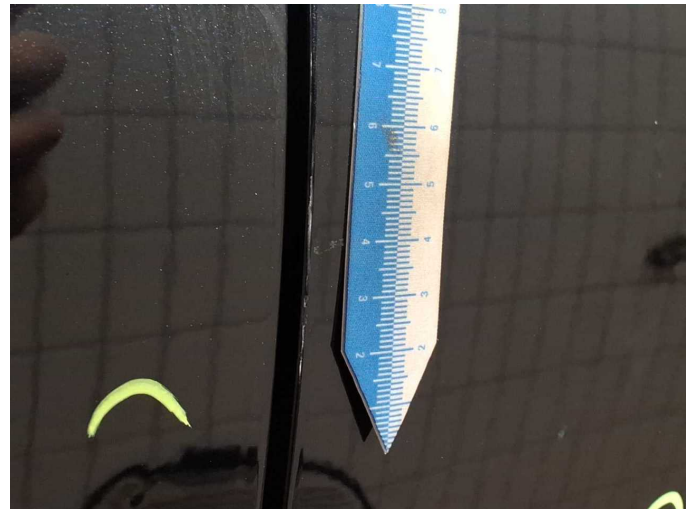
**Damage 16:** Bonnet: Bonnet - Scratch(es) - Paint



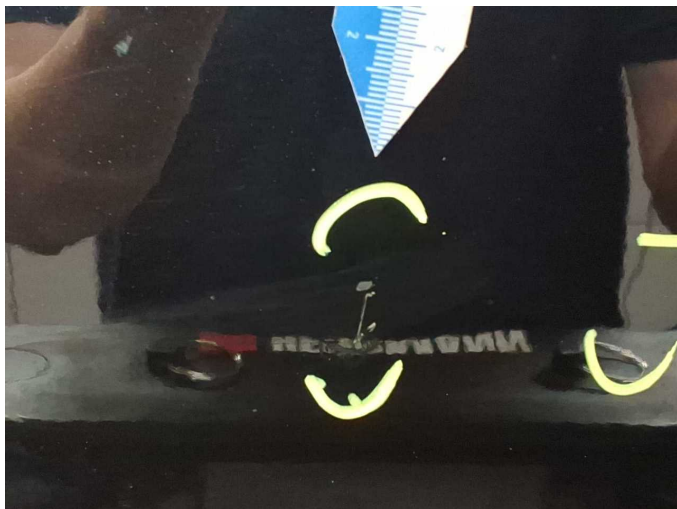
**Damage 17:** Door - front right side: Door - Dent / paintcoat damage - Repair and paint



**Damage 17:** Door - front right side: Door - Dent / paintcoat damage - Repair and paint



**Damage 17:** Door - front right side: Door - Dent / paintcoat damage - Repair and paint



**Damage 17:** Door - front right side: Door - Dent / paintcoat damage - Repair and paint



**Damage 17:** Door - front right side: Door - Dent / paintcoat damage - Repair and paint





**Damage 17:** Door - front right side: Door - Dent / paintcoat damage - Repair and paint



**Damage 18:** Roof: Roof - Corrosion - Paint



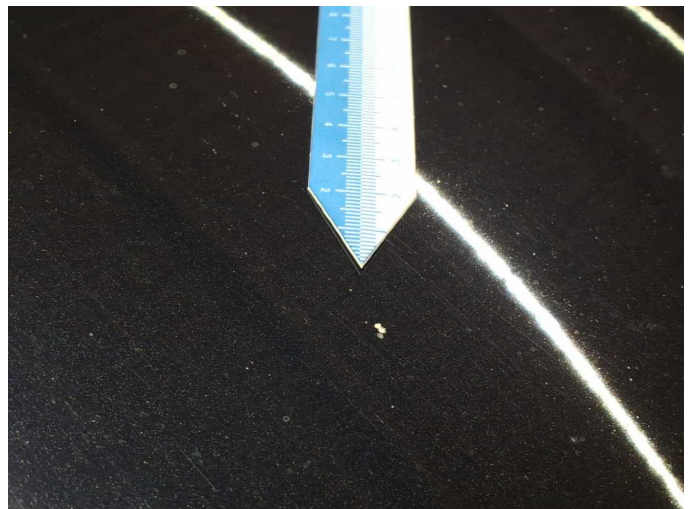
**Damage 18:** Roof: Roof - Corrosion - Paint



**Damage 18:** Roof: Roof - Corrosion - Paint



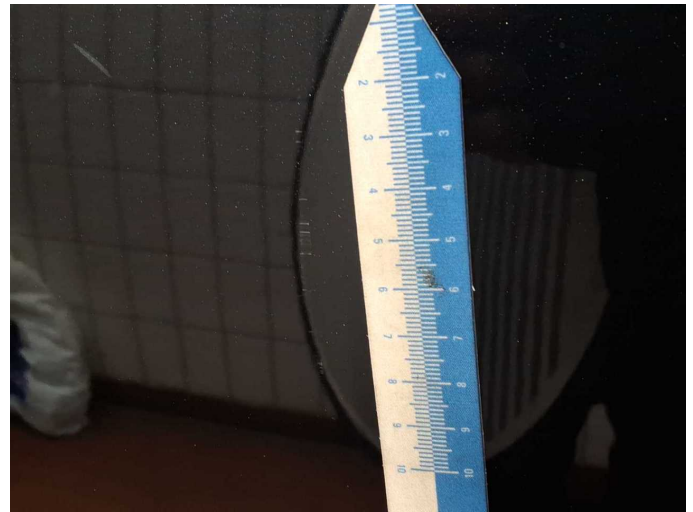
**Damage 18:** Roof: Roof - Corrosion - Paint



**Damage 18:** Roof: Roof - Corrosion - Paint



**Damage 19:** Door - rear right side: Door - dent(s) - Repair and paint



**Damage 19:** Door - rear right side: Door - dent(s) - Repair and paint



**Damage 19:** Door - rear right side: Door - dent(s) - Repair and paint



**Repainting 1:** Side panel - rear right side



**Repainting 2:** Door - rear right side





# Wartungshistorie

(gemäß Auftraggeber Informationen)

Fahrgestellnummer: WVVZZZ3CZME128067  
Hersteller / Modell: VOLKSWAGEN VW Passat Variant 1.4 TSI Plug-In-Hybrid DSG  
GTE

Datum	KM-Stand	Beschreibung
29.11.2024	69.420	Bremse Sonstiges; Bremsklötze hinten; Bremsklötze vorne; Bremsscheiben hinten; Bremsscheiben vorne; Getriebeöl ern/prüfen; Motoröl b. Wartung; Ölfilter ern; Regelwartungsdienst; Wartung Sonstiges; Zündkerzen ern
06.06.2024	60.507	AU
26.03.2024	55.842	Klimaanlage inst.; Reparatur Sonstiges; Systemtest/Eigendiagnose; Wartung Sonstiges
07.02.2024	50.065	Bremse Sonstiges; Funktionsprüfung; Systemtest/Eigendiagnose
21.12.2023	51.596	Bremsflüssigkeit; Bremsflüssigkeit ern; Motoröl b. Wartung; Ölfilter ern; Ölwechsel; Wartung Sonstiges
16.11.2023	50.065	Wartung Sonstiges
03.11.2023	50.065	Funktionsprüfung
04.04.2023	35.627	Motoröl b. Wartung; Ölfilter ern; Regelwartungsdienst; Wartung Sonstiges