



Expertise

Protocol number: 40970871
Order No. / Reference: 25046029
Inspection date: 7 Aug 2025

Manufacturer: Volkswagen

Model: Passat Variant 2.0 TDI SCR DSG Business

VIN: WVVZZZ3CZME121673



Vehicle details	
Manufacturer / Type / Model / Equipment	
Volkswagen Passat Variant 2.0 TDI SCR DSG Business	
Vehicle Identification number	WVVZZZ3CZME121673
Mileage (Read)	120,975 km
First registration	2 Jun 2021
Number of holders	1
Next periodical technical inspection	05/2026
(Report on hand)	
Power / Engine displacement	110 kw / 1,968 ccm
Fuel type / Cylinder	Diesel / 4
Gearbox / Number of gears	Automatic / 7
Type of drive	Front drive
Type of vehicle	Station wagon
Colour / colour code	oryxweiss perlmutteffekt (0K1)
Doors / Seats	5 / 5
Upholstery type	Cloth
Colour of upholstery	Black-Grey
Vehicle with smoke odor	no



Vehicle details

Maintenance booklet / proof	digital proof / complete	Next maintenance in	25,000 km
Last maintenance on / at	06/2025 at 120,066 km		
Key is / should be	2 / 2	FZG documents	ZB#2 (B) was available (copy), ZB#1 (S) was not available
		Letter No.	GC309866
Previous damage / Accident	Detectable	Repainting	None detectable
Inspection conditions	Sufficient	Lifting equipment / pit	yes
Test drive	Not performed	Engine function test	Performed
Manufacturer key number/ type code number	0603 / BQS 00832		
Emission standard	EURO6;WLTP;AP;PI/CI; M, N1 I	Fine dust sticker	
Permitted total weight	2,200 kg	Empty weight	

Tyres

Mounted tyres

#	Tyre size	Type of tyre	Manufacturer	Tread depth
1)	205/60 R16 92H	Summer tyres on Light alloy	Goodyear	6mm / 6mm
2)	205/60 R16 95V	Summer tyres on Light alloy	Continental	5mm / 5mm

Additional tyres

#	Tyre size	Type of tyre	Manufacturer	Tread depth
1)	215/60 R16 99H	Winter tyres on Light alloy	Goodyear	6mm / 6mm
2)	215/60 R16 99H	Winter tyres on Light alloy	Goodyear	6mm / 6mm

Replacement

Typ	Tyre size	Type of tyre	Manufacturer	Tread depth
	Tirefit	Expiration date 03/2025		

Legend: Tread depth information for tires on the left is in the first place, for tires on the right is in the second place on the axle in the direction of travel

Equipment

Standard equipment

- Airbag for driver and front passenger
- Anti-lock braking system (ABS)
- Automatic distance control ACC "stop & go", including speed limiter
- Hill start assist
- Chrome strips on the side windows
- Roof rails black
- Parking aid - warning signals for obstacles in the front and rear areas
- Automatic headlight switching
- Remote release for the trunk lid
- Pedestrian detection
- Luggage compartment floor can be raised
- Interior light front and rear with switch-off delay and dimming function
- Instrument cluster with electronic speedometer, odometer, trip meter, tachometer
- Paint finish: Uni
- LED taillights
- Steering wheel: Multifunction steering wheel in leather, with shift paddles
- Fatigue detection
- Non-smoking version
- Emergency call service
- Package: Light and Vision Package "Plus"
- Proactive occupant protection system in conjunction with "Front Assist"
- Rain sensor
- Wheels: 4 light alloy wheels "Sepang" 6.5 J x 16
- Rear seat bench undivided, backrest asymmetrically divided and foldable, with center armrest
- Power steering
- Seats: Lumbar supports in front
- Start-stop system
- Telephone interface
- First aid kit, warning triangle and safety vest
- Electronic immobilizer
- Airbag, head airbag system for front and rear passengers
- App Connect
- Exterior mirrors electrically adjustable and heated
- Cup holders (2) front
- Brake light, third
- Headlining in Mistral Grey
- diesel particulate filter
- Electronic parking brake including auto-hold function
- Electronic stabilization program and electromechanical brake booster
- Front windscreen in laminated safety glass, heat and sound insulating
- Transmission: 7-speed DSG
- ISOFIX anchorage points
- Air conditioning
- Headrests (3) rear
- Front headrests
- LED fog lights and cornering lights
- LED headlights with daytime running lights
- Headlight range adjustment
- Multifunction display "Premium" with multi-color display
- Mesh partition
- Emergency braking assistant "Front Assist" (for automatic distance control ACC up to 210 km/h)
- Upholstery: "Weave" fabric
- Radio "Composition"
- Radio accessories: Digital radio reception DAB+
- Tire pressure monitoring indicator (passive)
- LED taillights
- Leather gearshift knob
- Keyless start system without safe lock
- Seat belts: three-point automatic seat belt
- Seats: Front seats height adjustable
- 12V socket on the rear center console
- Textile floor mats
- Warning sound and light for unfastened seat belts at the front and rear

Extra equipment



- "Discover Pro" navigation system including "Streaming & Internet" (4x20W app-controlled, wireless digital cockpit, operation with proximity sensor, dual tuner with phase shift, DAB vehicle menu, speed, volume adjustment, gesture control, 32GB SSD hard drive, 2D map display, sound control, triple TFT display with touchscreen, MP3 navigation for Europe, voice control, telephone contact address, telephone interface, "Comfort" with inductive charging, 2 USB iPod/iPhone traffic signs, "We Connect Plus" including "We Connect" destination guidance, dynamic RDS TMC tuner, pre-programmed mobile key, for vehicle, Smart.)
- Area View including rear view camera (rear view) with Business Premium (displays the vehicle's surroundings in real time on the radio/navigation system display - supports when exiting from unclear exits or side streets, entering and exiting parking spaces, maneuvering with a trailer, or driving off-road)
- panoramic tilt/slide roof (with panoramic roof at the rear)
- Proactive occupant protection system and lane change assistant "Side Assist" (Proactive occupant protection system in conjunction with "Front Assist" and "Side Assist" - lane change assistant "Side Assist" and rear traffic assistant)
- Sun blinds on the rear door windows
- Voice control
- Folding trailer hitch (with electric release)
- Luggage net
- Package: "Business Premium" package including navigation (from Business) (2 USB-C ports in the front, 1 USB-C charging socket in the rear, 230 V socket, App-Connect including wireless, Apple CarPlay, Android Auto, "Travel Assist" driving assistant and "Lane Assist" lane keeping assistant, Air Care Climatronic with 3-zone temperature control, allergen filter and rear controls, electric lumbar supports on the driver's side, massage function on the driver's side, "Rear View" reversing camera, heated windshield washer nozzles, Comfort telephone interface, inductive charging function, heated front seats)
- Package: Driver Assistance Package "Plus" including IQ.LIGHT - LED matrix headlights in conjunction with the Business Package (Dynamic Light Assist dynamic high beam control, Travel Assist driving assistant, Lane Assist lane keeping assistant, and Emergency Assist; LED matrix headlights, LED daytime running lights, cornering lights, and dynamic indicators; LED taillights with dynamic indicators; dynamic headlight range control with dynamic cornering lights; rear fog lights on both sides; reversing lights on both sides; Park Assist parking assistant including parking aid; Side Assist lane change assistant; and Rear Traffic Alert).

Brief expert findings

Documents submitted	At the time of the inspection, the registration certificate Part 2 (letter) was available, but the registration certificate Part 1 (certificate) was not. (Copy)
VIN comparison	The vehicle identification number (VIN) was read and the undersigned verified that it matched the documents submitted during the inspection.
Inspection	The inspection conditions were sufficient for the assessment of the vehicle. Lifting equipment and a pit were available for examining the vehicle.
Test drive	No test drive/maneuvering was carried out during the inspection of the vehicle.
Engine function test	An engine test run was performed.

Value reducing factors

No.	Component group	Description
1	Equipment	Tirefit filler - Expired - Replace
2	Boot lid / rear door	Boot lid - Glued / labelled - De-glue / neutralise
3	Front bumper	Front bumper - Scratched - Paint

Wear and tear

No.	Component group	Description
1	Rear bumper	Rear bumper - Scratch(es) - No deduction
2	Interior	Interior - Soiled - No deduction
3	Vehicle glazing	Windscreen - Stone chips - No deduction

The vehicle shows signs of wear commensurate with its age and use.



Previous damages

No.	Previous damage	Extent of damage (Net)
1	Front, Provided by user / customer, from 22 Jun 2023	1.189,11 €

Order/Scope of order

The order was placed to prepare a sales report for the vehicle described. This includes the following:

- Description of core relevant information about the vehicle
- Documentation of equipment features
(*Delivery by third-party service providers*)
- Documentation of damage, defects, missing parts
- Documentation of previous damage, unrepaired previous damage, repainting
- a brief visual or functional inspection of the equipment details if possible.
(*Functional tests of driver assistance systems are not included in the scope of services!*)
- a photo documentation of the vehicle

Basis for the order

This product is based on the Alphabet Fuhrpark GmbH guidelines for vehicle returns and valuations. The expert makes the explicit findings in each individual case objectively within the framework of the specified standards based on his or her own expertise.

The vehicle inspection takes place in a disassembled state.

Damage or defects that can only be detected during disassembly/diagnosis work or through advanced knowledge remain within the scope of the prognosis risk. An extended risk exists for concealed defects caused by fraudulent deception and not identifiable by the expert.

Damage or defects resulting from normal use or wear and tear of the vehicle will be accepted according to the applicable standard.

There was no explicit identification or monetary consideration of the expected features within the product.

Features which in their nature and severity slightly exceed normal use but do not constitute unacceptable damage will be documented and identified under signs of use if necessary.

Damage or defects which, according to the underlying standard, can no longer be attributed to normal use or wear and tear are listed in the product under "Depreciating Factors".

Depending on the product specification, a monetary ID can be provided. If this takes place, the costs can be 100% d or pro rata depending on the vehicle's age and mileage.

Previous damages

According to available information previous damages were repaired at the vehicle. Traces of repairs, which allow conclusions about the area of repair, were not recognizable during the inspection.

Comments

- Winterradsatz ist kein Bestandteil des Auslieferumfangs.



Figure 1: Diagonal front (left)



Figure 2: Diagonal front (right)



Figure 3: Diagonal rear (left)



Figure 4: Diagonal rear (right)



Figure 5: Interior - front



Figure 6: Interior - rear



Figure 7: Instrument cluster



Figure 8: Instrument panel



Figure 9: interior 360° view



Figure 10: Cargo area

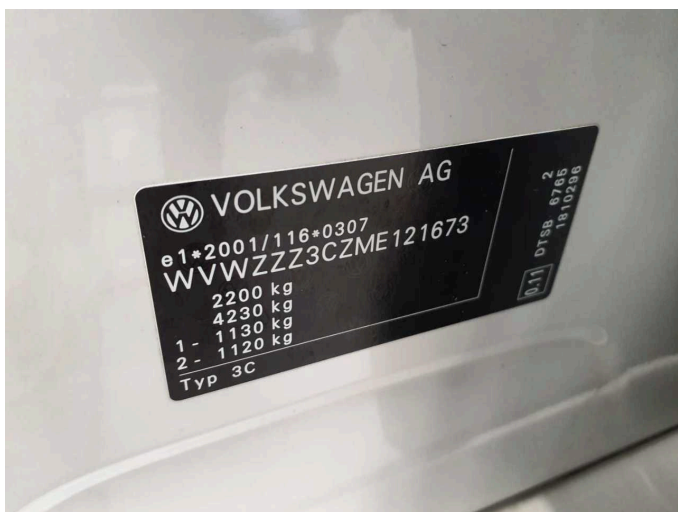


Figure 11: VIN



Figure 12: Mounted tyres



Figure 13: Documents



Figure 14: Documents



Figure 15: Documents



Figure 16: Additional tyres

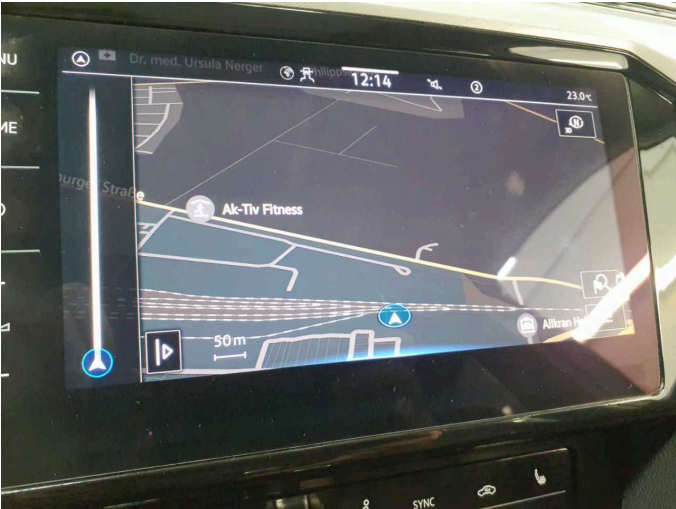


Figure 17: Navigation



Figure 18: Misc.

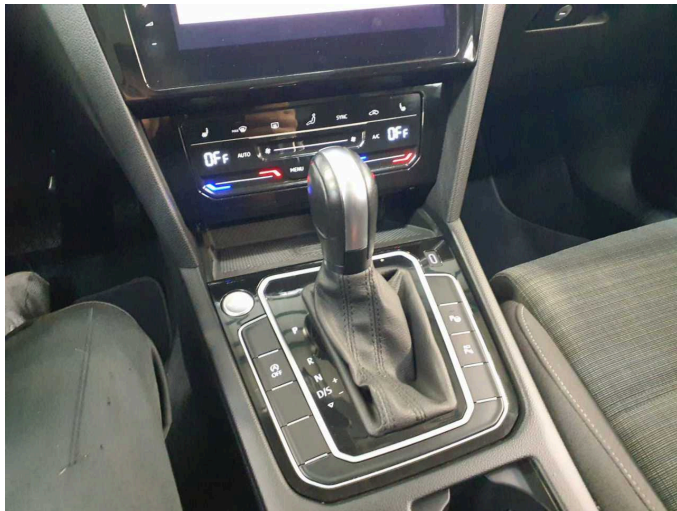


Figure 19: Misc.

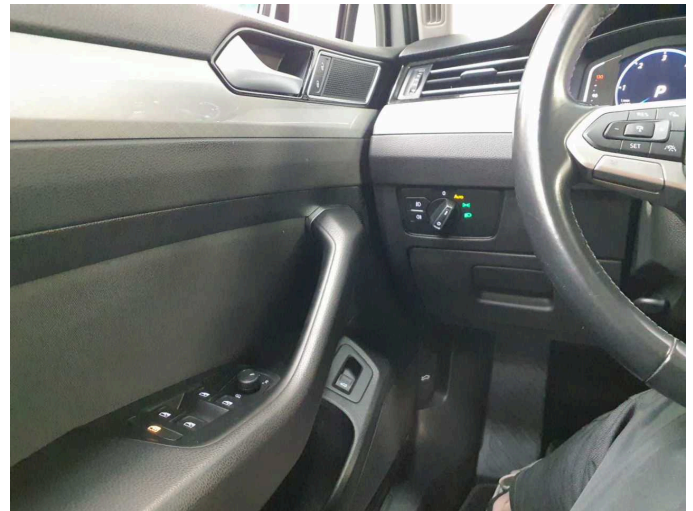


Figure 20: Misc.

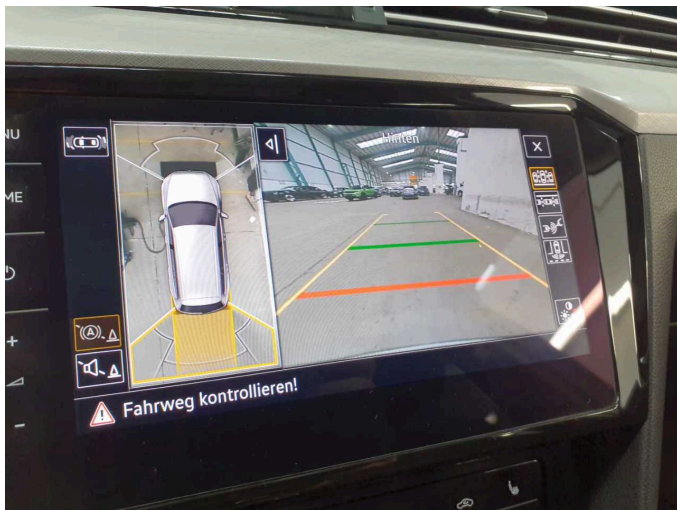


Figure 21: Misc.

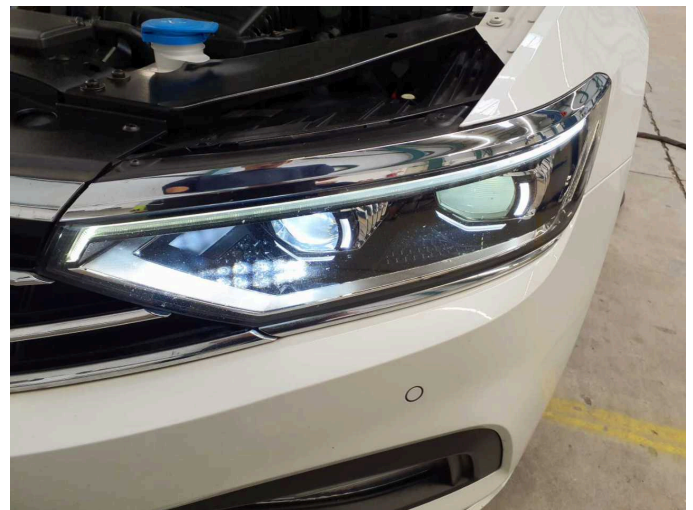


Figure 22: Misc.

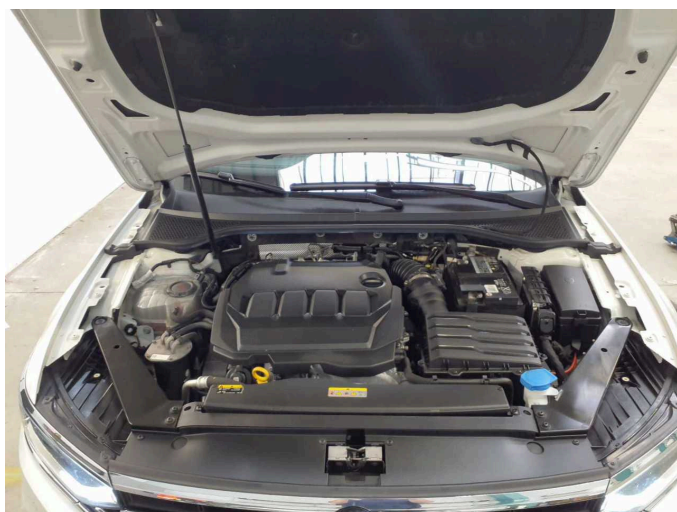


Figure 23: Misc.



Figure 24: Misc.



Figure 25: Misc.



Figure 26: Misc.



Figure 27: Misc.



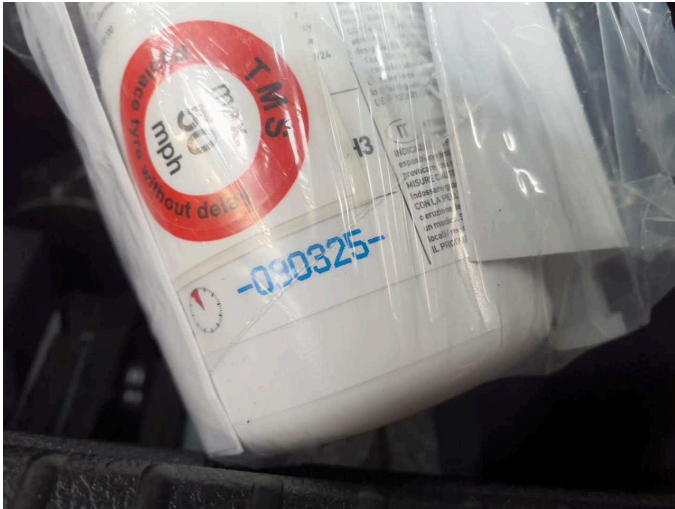
Figure 28: Misc.



Figure 29: Misc.



Figure 30: Misc.



Damage 1: Equipment: Tirefit filler - Expired - Replace



Damage 2: Boot lid / rear door: Boot lid - Glued / labelled - De-glue / neutralise



Damage 3: Front bumper: Front bumper - Scratched - Paint



Damage 3: Front bumper: Front bumper - Scratched - Paint



Damage 3: Front bumper: Front bumper - Scratched - Paint