



VOLKSWAGEN Passat

Passat Variant 1.4 TSI Plug-In-Hybrid DSG



VIN NO WVWZZZ3CZME120551
Registration Number CZME120551

MOT Date	Number of Owners	Number of Keys	Odometer Reading
2026-06-01	1	2	150004 km
Last Service	Last Service Mileage	First Registration Date	Country First Registered
2024-08-19	115118	2021-06-14	Germany

Inspection Report Summary

Customer	BCA Online	Report Number	P20251010104933
Inspection Date / Place	2025-10-10 / BCA Neuss	Cosmetic Grade	3

Vehicle Summary

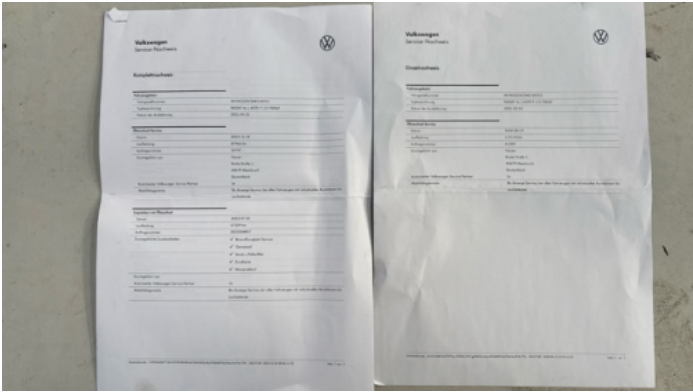
Vehicle Condition	Runner	VAT Type	Qualifying
Fuel Type	Plug - in Hybrid Electric Vehicle Petrol	Road Worthy	Yes
Colour	Blue	Engine Size (cc)	1395
Engine Size	1.4	No of Doors	5
Body Type	Stationwagon / Estate	Drive Train	Front
Seat Colour		No of Seats	5
Seat Covering Name	Hellgrau	Seat Covering	Cloth/Synthetic Leather
Charging Cables	OUC + Type 2	NEDC CO2 Rating (q/km)	36
Gearbox Type	Automatic		

Vehicle History & Documents

Service Book Available	Computer Print Out Available	Next Service Mileage	km
Previous Usage		Imported	No
Manufacturer Warrenty			









Equipment

Tinted Glass	Airbag Status	Anti-lock braking	Cruise control
Digitaldashboard	Heated wing mirrors	Remote adjusting wing mirrors	Reversing Camera
Stability control	Electrically adjustable seats	Electrictailgate	LED Headlamps
Rear parking sensors	360°camera	Alloys wheels	Bluetooth telephone interface
Digital Radio	Front parking sensors	MassageSeats	Remote central locking
Roof rails	Sunroof	Electrically folding wing mirrors	Leather steering wheel
Radio			

Equipment Details

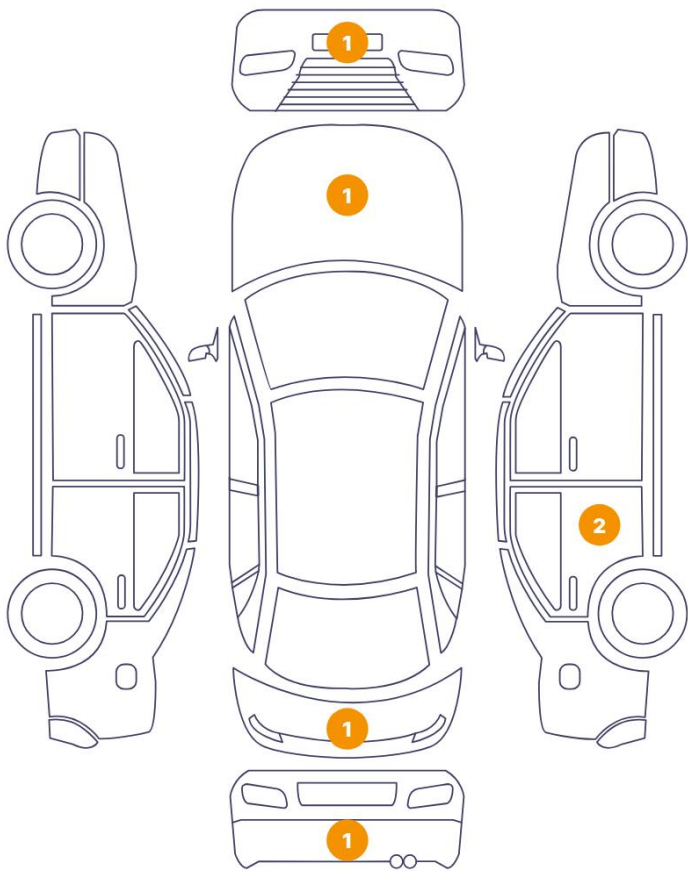
Air Conditioning	Three Zone Climate Control	Alloy Wheel Size	17
Seat Heating	Front and Rear	Sunroof Type	Opening Panoramic

Wheels & Tyres

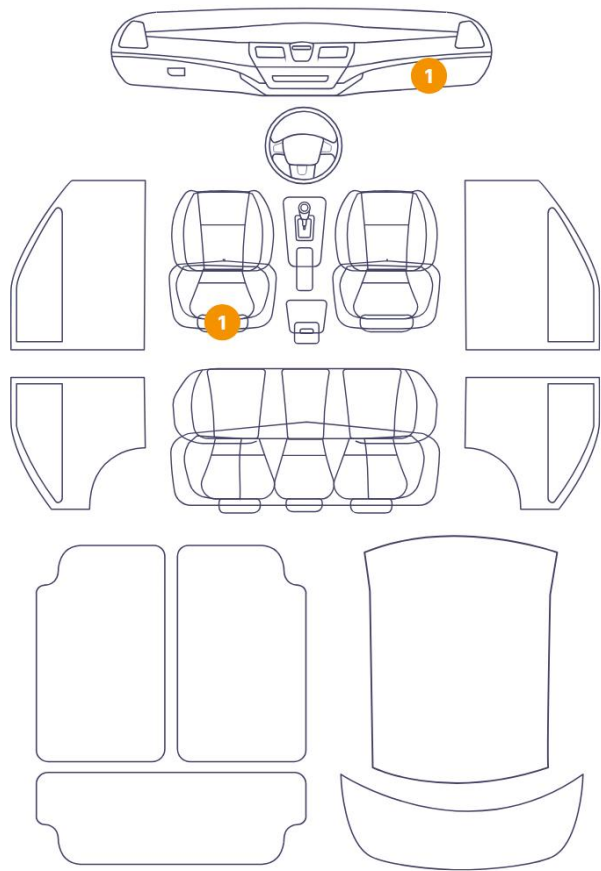
Left Rear Tyre Depth	4	Right Front Tyre Depth	4
Left Front Tyre Depth	4	Right Rear Tyre Depth	4

Cosmetic Damage

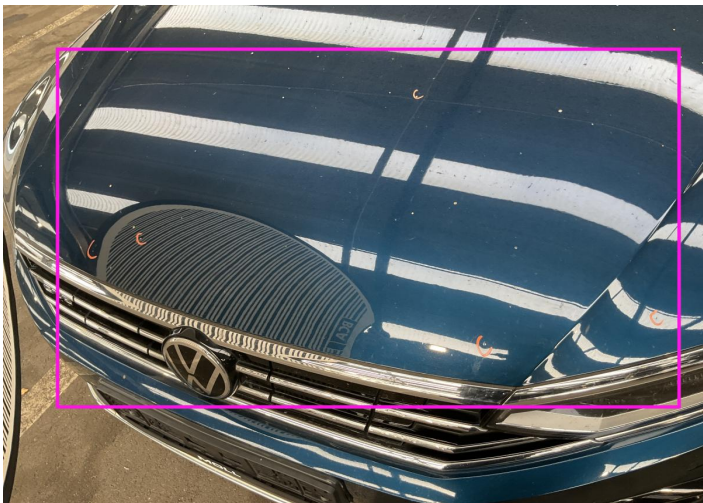
6 Schäden



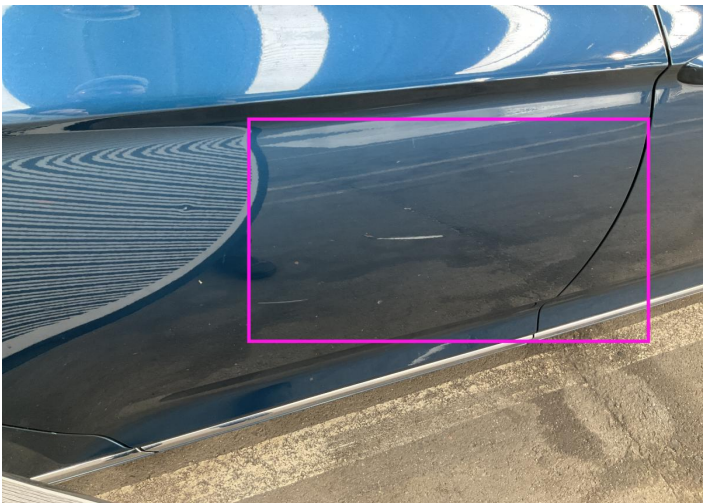
2 Schäden



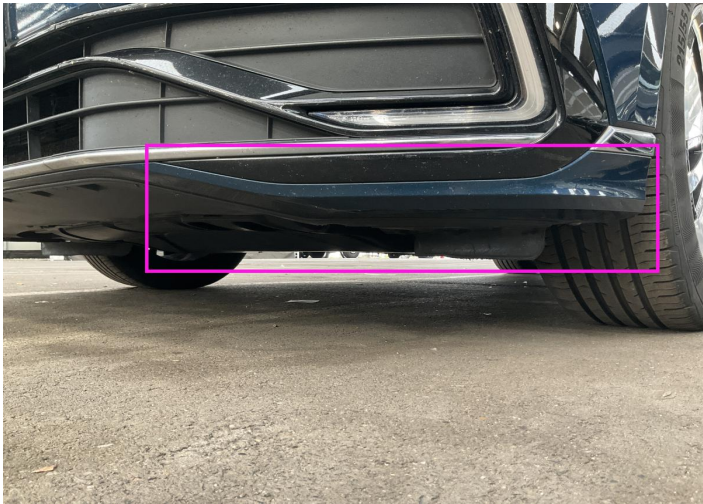
Component		Damage	Comments
1	Hood	Bodywork / Dent / Dent	
2	Door / Back Right	Paint / Scratch / Scuff	
3	Bumper / Front	Paint / Scratch / Scuff	
4	Center Console	Interior / Dirty	
5	Bumper / Back	Paint / Scratch / Scuff	
6	Seat / Front Left	Interior / Scratched	
7	Tailgate	Bodywork / Dent / Dent	
8	Door / Back Right	Bodywork / Dent / Dent	



1. Hood
Bodywork / Dent / Dent -



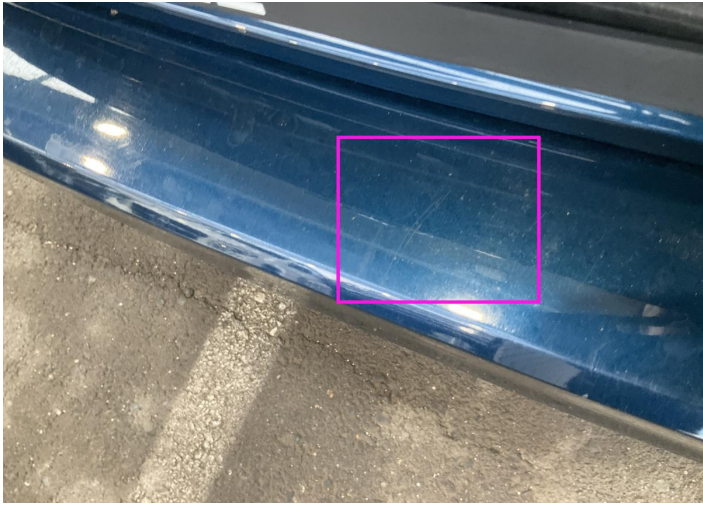
2. Door / Back Right
Paint / Scratch / Scuff -



3. Bumper / Front
Paint / Scratch / Scuff -



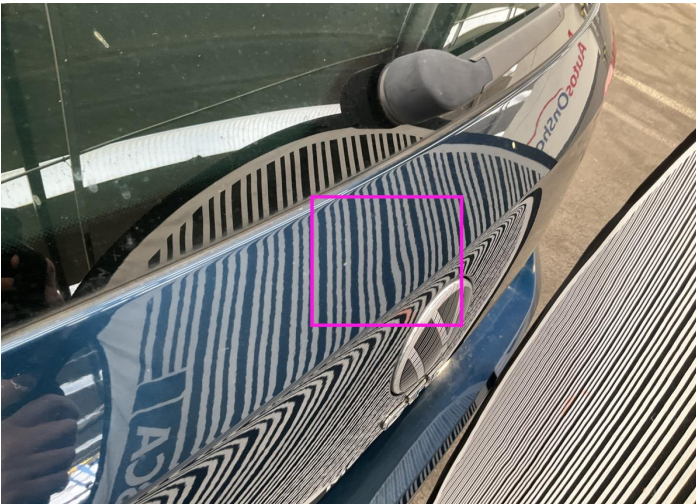
4. Center Console
Interior / Dirty -



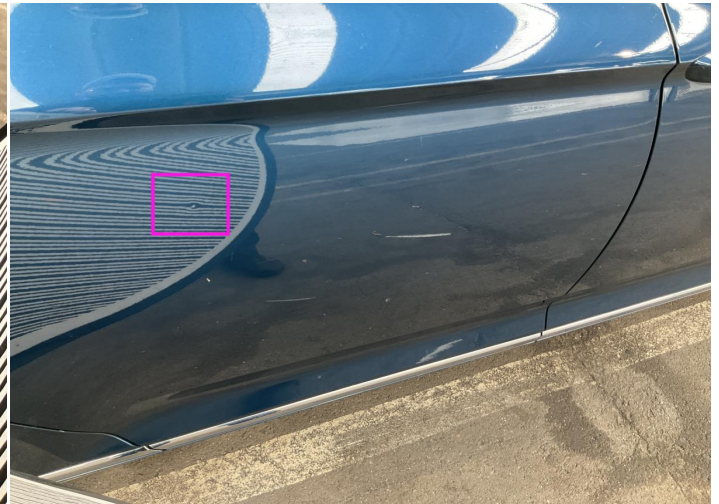
5. Bumper / Back
Paint / Scratch / Scuff -



6. Seat / Front Left
Interior / Scratched -



7. Tailgate
Bodywork / Dent / Dent -



8. Door / Back Right
Bodywork / Dent / Dent -

Mechanical Condition

Control Lights

ABS Warning Light	✓	ESP Fault/Traction Control Malfunction Light	✓
Airbag Warning Light	✓	Oil Pressure Warning Light	✓
Brake Warning Light	✓	Power Steering Warning Light	✓
Alternator / Battery	✓	No Dashboard Lights	✓
Display Defect	✓	Service Light	⚠
Tire Pressure Monitoring System	✓		

Engine

Engine Status / EML	✓	Engine Leak Visible	✓
Engine Starts	✓		

Gearbox

Gear Box	✓
----------	---

Equipments Test

Electric Windows	✓	AC / Heating System	✓
Main & Spare Keys Functioning	⚠	Parking Sensors / Cameras Functioning	✓

Levels

Brakes Fluid	✓	Coolant Fluid	✓
--------------	---	---------------	---

Hybrid/EV

Charge Lead Condition	✓	Charge Port Condition	✓
Hybrid System Fault	✓		

Test Drive Inspection

Steering Wheel			
Steering Noise / Anomaly		✓	
Engine			
Engine Noise	✓	The Gears Scratch / Skip / Abnormal Operation	✓
Fume Quantity	✓	Power Loss	✓
Brake			
Brake System Anomaly		✓	
General			
Test Driven Status		✓	
✓ <i>No troubles detected, good condition or correct tests, according to vehicle age and mileage</i>			
! <i>Damages or malfunction detected that requires repairs by the buyer</i>			
NA <i>Not applicable</i>			
= <i>Not tested</i>			

Disclaimer

Please also note the "UserGuide condition report", which shows the scope of the vehicle description.

[User Guide](#)