



Expertise

Protocol number: 41276150  
Order No. / Reference: 25019329  
Inspection date: 28 Aug 2025

Manufacturer: Volkswagen

Model: Passat Variant 2.0 TDI SCR DSG Business

VIN: WVGZZZ3CZME109459



Vehicle details	
Manufacturer / Type / Model / Equipment	
Volkswagen Passat Variant 2.0 TDI SCR DSG Business	
Vehicle Identification number	WVGZZZ3CZME109459
Mileage (Read)	139,353 km
First registration	2 Jun 2021
Number of holders	1
Next periodical technical inspection	06/2026
(Report on hand)	
Power / Engine displacement	110 kw / 1,968 ccm
Fuel type / Cylinder	Diesel / 4
Gearbox / Number of gears	Automatic transmission / 7
Type of drive	Front drive
Type of vehicle	Station wagon
Colour / colour code	oryxweiss perlmutteffekt (0K1)
Doors / Seats	5 / 5
Upholstery type	Leather
Colour of upholstery	Black-Grey
Vehicle with smoke odor	no



## Vehicle details

<b>Maintenance booklet / proof</b>	digital proof / complete	<b>Next maintenance in</b>	19,300 km
<b>Last maintenance on / at</b>	03/2025 at 128,611 km		
<b>Key is / should be</b>	3 / 3	<b>FZG documents</b>	ZB#2 (B) was available (copy), ZB#1 (S) was not available
		<b>Letter No.</b>	GC314334
<b>Previous damage / Accident</b>	None detectable	<b>Repainting</b>	None detectable
<b>Inspection conditions</b>	sufficient	<b>Lifting equipment / pit</b>	yes
<b>Test drive</b>	Not performed	<b>Engine function test</b>	Performed
<b>Manufacturer key number/ type code number</b>	0603 / BQS 00833		
<b>Emission standard</b>	EURO6;WLTP;AP;PI/CI; M, N1 I	<b>Fine dust sticker</b>	
<b>Permitted total weight</b>	2,200 kg	<b>Empty weight</b>	

## Tyres

### Mounted tyres

#	Tyre size	Type of tyre	Manufacturer	Tread depth
1)	215/60 R16 95V	Summer tyres on Light alloy	Continental	5mm / 5mm
2)	215/60 R16 95V	Summer tyres on Light alloy	Continental	6mm / 6mm

**Legend:** Tread depth information for tires on the left is in the first place, for tires on the right is in the second place on the axle in the direction of travel

## Equipment

### Standard equipment

- Interior light front and rear with switch-off delay and dimming function
- Instrument cluster with electronic speedometer, odometer, trip meter, tachometer
- Paint finish: Uni
- LED taillights
- Steering wheel: Multifunction steering wheel in leather, with shift paddles
- Fatigue detection
- Non-smoking version
- Emergency call service
- Package: Light and Vision Package "Plus"
- Proactive occupant protection system in conjunction with "Front Assist"
- Rain sensor
- Wheels: 4 light alloy wheels "Sepang" 6.5 J x 16
- Rear seat bench undivided, backrest asymmetrically divided and foldable, with center armrest
- Power steering
- Seats: Lumbar supports in front
- Start-stop system
- Telephone interface
- First aid kit, warning triangle and safety vest
- Electronic immobilizer
- Airbag for driver and front passenger
- Anti-lock braking system (ABS)
- Automatic distance control ACC "stop & go", including speed limiter
- Hill start assist
- Chrome strips on the side windows
- Roof rails black
- Parking aid - warning signals for obstacles in the front and rear areas
- Automatic headlight switching
- Remote release for the trunk lid
- Pedestrian detection
- Luggage compartment floor can be raised
- ISOFIX anchorage points
- Air conditioning
- Headrests (3) rear
- Front headrests
- LED fog lights and cornering lights
- LED headlights with daytime running lights
- Headlight range adjustment
- Multifunction display "Premium" with multi-color display
- Mesh partition
- Emergency braking assistant "Front Assist" (for automatic distance control ACC up to 210 km/h)
- Upholstery: "Weave" fabric
- Radio "Composition"
- Radio accessories: Digital radio reception DAB+
- Tire pressure monitoring indicator (passive)
- LED taillights
- Leather gearshift knob
- Keyless start system without safe lock
- Seat belts: three-point automatic seat belt
- Seats: Front seats height adjustable
- 12V socket on the rear center console
- Textile floor mats
- Warning sound and light for unfastened seat belts at the front and rear
- Airbag, head airbag system for front and rear passengers
- App Connect
- Exterior mirrors electrically adjustable and heated
- Cup holders (2) front
- Brake light, third
- Headlining in Mistral Grey
- diesel particulate filter
- Electronic parking brake including auto-hold function
- Electronic stabilization program and electromechanical brake booster
- Front windscreen in laminated safety glass, heat and sound insulating
- Transmission: 7-speed DSG

### Extra equipment



- Area View including rear view camera (rear view) with Business Premium (displays the vehicle's surroundings in real time on the radio/navigation system display - supports when exiting from unclear exits or side streets, entering and exiting parking spaces, maneuvering with a trailer, or driving off-road)
- Head-up display
- Luggage net
- Package: "Business Premium" package including navigation (from Business) (2 USB-C ports in the front, 1 USB-C charging socket in the rear, 230 V socket, App-Connect including wireless, Apple CarPlay, Android Auto, "Travel Assist" driving assistant and "Lane Assist" lane keeping assistant, Air Care Climatronic with 3-zone temperature control, allergen filter and rear controls, electric lumbar supports on the driver's side, massage function on the driver's side, "Rear View" reversing camera, heated windshield washer nozzles, Comfort telephone interface, inductive charging function, heated front seats)
- Package: Driver Assistance Package "Plus" including IQ.LIGHT - LED matrix headlights in conjunction with the Business Package (Dynamic Light Assist dynamic high beam control, Travel Assist driving assistant, Lane Assist lane keeping assistant, and Emergency Assist; LED matrix headlights, LED daytime running lights, cornering lights, and dynamic indicators; LED taillights with dynamic indicators; dynamic headlight range control with dynamic cornering lights; rear fog lights on both sides; reversing lights on both sides; Park Assist parking assistant including parking aid; Side Assist lane change assistant; and Rear Traffic Alert).
- Steering wheel: Multifunction steering wheel in leather, heated, with shift paddles
- Voice control
- Wirelessly heated and infrared-reflecting windscreen
- "Discover Pro" navigation system including "Streaming & Internet" (4x20W app-controlled, wireless digital cockpit, operation with proximity sensor, dual tuner with phase shift, DAB vehicle menu, speed, volume adjustment, gesture control, 32GB SSD hard drive, 2D map display, sound control, triple TFT display with touchscreen, MP3 navigation for Europe, voice control, telephone contact address, telephone interface, "Comfort" with inductive charging, 2 USB iPod/iPhone traffic signs, "We Connect Plus" including "We Connect" destination guidance, dynamic RDS TMC tuner, pre-programmed mobile key, for vehicle, Smart.)
- Package: Ambient Lighting "Plus" (multi-colored ambient lighting - LED entry/warning lights in all doors - interior lights with switch-off delay and dimming function, 2 LED reading lights each at the front and rear)
- Proactive occupant protection system and lane change assistant "Side Assist" (Proactive occupant protection system in conjunction with "Front Assist" and "Side Assist" - lane change assistant "Side Assist" and rear traffic assistant)
- Radio accessories: Harman Kardon sound system (10+1 speakers, 700 watts total power, 16-channel digital amplifier, subwoofer)
- Seats: ergoComfort seat with 14-way power adjustment, memory and massage on the driver's side. In conjunction with the Business Package (electrically folding exterior mirrors, dimming on the driver's side, ambient lighting and memory - electrically adjustable front lumbar supports, massage function on the driver's side - electrically adjustable front seats, ergoComfort seat on the driver's side, with memory function and easy entry)
- Tailgate with electric opening and closing, electric opening for luggage compartment cover (extendable and removable luggage compartment cover, with electric opening - tailgate with electric opening and closing)

## Brief expert findings

Documents submitted	At the time of the inspection, the registration certificate Part 2 (letter) was available, but the registration certificate Part 1 (certificate) was not. (Copy)
VIN comparison	The vehicle identification number (VIN) was read from the vehicle and its conformity with the submitted documents was verified during the inspection by the undersigned.
Inspection	The inspection conditions were sufficient for the assessment of the vehicle. Lifting equipment and a pit were available for examining the vehicle.
Test drive	No test drive/maneuvering was carried out during the inspection of the vehicle.
Engine function test	An engine test run was performed.

## Value reducing factors

No.	Component group	Description
1	Side panel - rear left side	Side panel - Scratch(es) - Smart repair
2	Door - rear left side	Door - Scratch(es) - Smart repair
3	Wing mirror - right side	Cap - Broken / torn - Replace
4	Front bumper	Front bumper - Scratched - Paint
5	Rear bumper	Rear bumper - Scratched - Paint



No.	Component group	Description
6	Bonnet	Bonnet - Dent / paintcoat damage - Repair and paint

## Wear and tear

No.	Component group	Description
1	Interior	Interior - Soiled - No deduction
2	Vehicle glazing	Windscreen - Stone chips - No deduction

The vehicle shows signs of wear commensurate with its age and use.

## Order/Scope of order

The order was placed to prepare a sales report for the vehicle described. This includes the following:

- Description of core relevant information about the vehicle
- Documentation of equipment features  
(*Delivery by third-party service providers*)
- Documentation of damage, defects, missing parts
- Documentation of previous damage, unrepaired previous damage, repainting
- a brief visual or functional inspection of the equipment details if possible.  
(*Functional tests of driver assistance systems are not included in the scope of services!*)
- a photo documentation of the vehicle

## Basis for the order

This product is based on the Alphabet Fuhrpark GmbH guidelines for vehicle returns and valuations. The expert makes the explicit findings in each individual case objectively within the framework of the specified standards based on his or her own expertise.

The vehicle inspection takes place in a disassembled state.

Damage or defects that can only be detected during disassembly/diagnosis work or through advanced knowledge remain within the scope of the prognosis risk. An extended risk exists for concealed defects caused by fraudulent deception and not identifiable by the expert.

Damage or defects resulting from normal use or wear and tear of the vehicle will be accepted according to the applicable standard.

There was no explicit identification or monetary consideration of the expected features within the product.

Features which in their nature and severity slightly exceed normal use but do not constitute unacceptable damage will be documented and identified under signs of use if necessary.

Damage or defects which, according to the underlying standard, can no longer be attributed to normal use or wear and tear are listed in the product under "Depreciating Factors".

Depending on the product specification, a monetary ID can be provided. If this takes place, the costs can be 100% d or pro rata depending on the vehicle's age and mileage.

## Previous damages

Apparently, no repaired previous damage could be found on the vehicle.

## Comments

Das Fahrzeug befand sich zum Besichtigungszeitpunkt in beschädigten, nicht demontierten Zustand. Schadenausweitung möglich, Zusatzkosten können entstehen.





**Figure 1:** Diagonal front (left)



**Figure 2:** Diagonal front (right)



**Figure 3:** Diagonal rear (left)



**Figure 4:** Diagonal rear (right)



**Figure 5:** Interior - front



**Figure 6:** Interior - rear





Figure 7: Instrument cluster



Figure 8: Instrument panel



Figure 9: interior 360° view



Figure 10: Cargo area



Figure 11: VIN



Figure 12: Mounted tyres



Figure 13: Documents



Figure 14: Documents



Figure 15: Navigation



Figure 16: Misc.



Figure 17: Misc.



Figure 18: Misc.





Figure 19: Misc.



Figure 20: Misc.

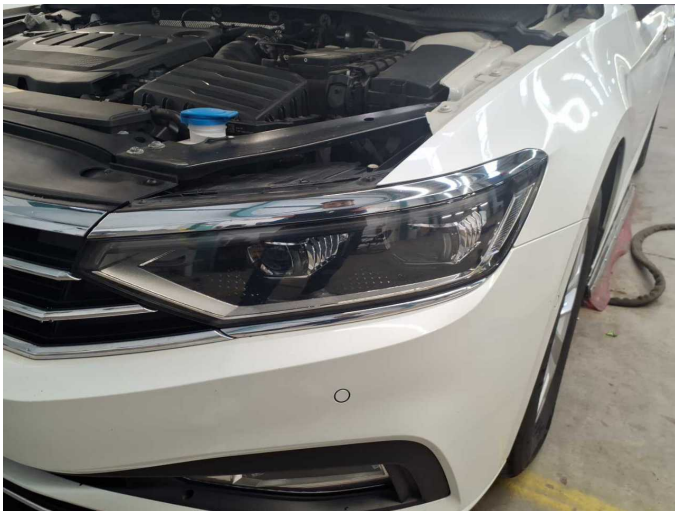


Figure 21: Misc.



Figure 22: Misc.

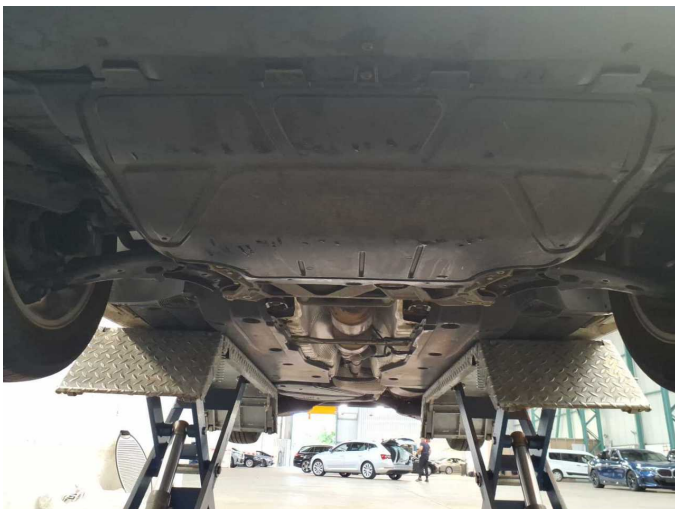


Figure 23: Misc.



Figure 24: Misc.



**Figure 25:** Misc.



**Damage 1:** Side panel - rear left side: Side panel - Scratch(es) - Smart repair



**Damage 1:** Side panel - rear left side: Side panel - Scratch(es) - Smart repair



**Damage 2:** Door - rear left side: Door - Scratch(es) - Smart repair



**Damage 2:** Door - rear left side: Door - Scratch(es) - Smart repair



**Damage 3:** Wing mirror - right side: Cap - Broken / torn - Replace





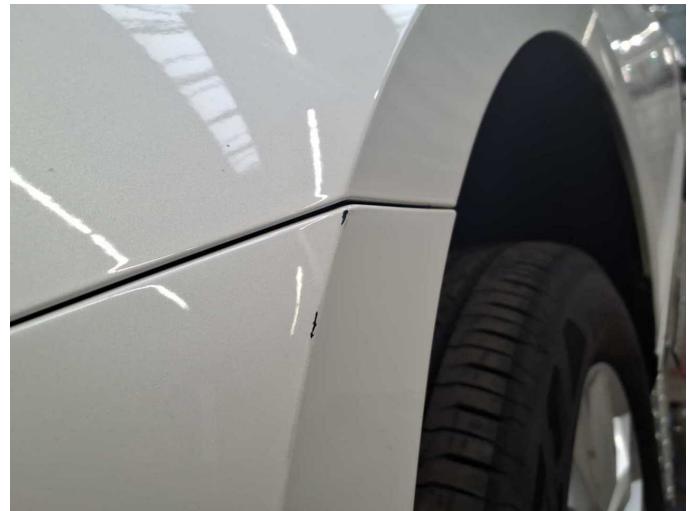
**Damage 3:** Wing mirror - right side: Cap - Broken / torn - Replace



**Damage 4:** Front bumper: Front bumper - Scratched - Paint



**Damage 4:** Front bumper: Front bumper - Scratched - Paint



**Damage 4:** Front bumper: Front bumper - Scratched - Paint



**Damage 4:** Front bumper: Front bumper - Scratched - Paint



**Damage 5:** Rear bumper: Rear bumper - Scratched - Paint

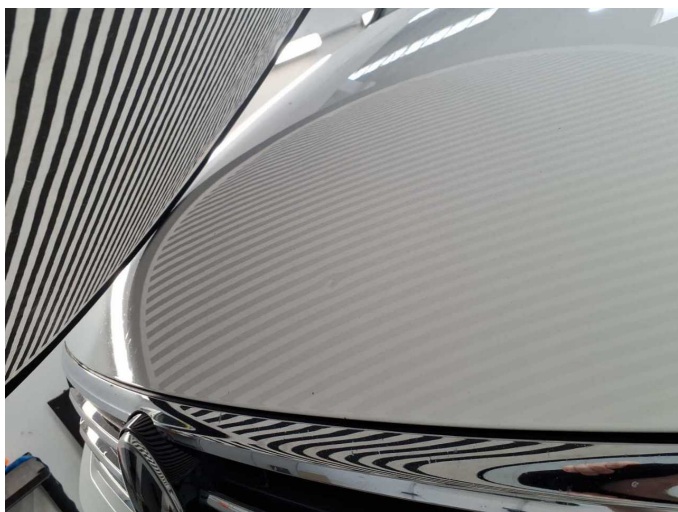




**Damage 5:** Rear bumper: Rear bumper - Scratched - Paint



**Damage 6:** Bonnet: Bonnet - Dent / paintcoat damage - Repair and paint



**Damage 6:** Bonnet: Bonnet - Dent / paintcoat damage - Repair and paint



**Damage 6:** Bonnet: Bonnet - Dent / paintcoat damage - Repair and paint