



Expertise

Protocol number: 39852294  
Order No. / Reference: 24717176  
Inspection date: 22 May 2025

Manufacturer: Volkswagen

Model: Passat Variant 2.0 TDI SCR Business

VIN: WVVZZZ3CZME054686



| Vehicle details                                |                    |
|--|--------------------|
| Manufacturer / Type / Model / Equipment        |                    |
| Volkswagen Passat Variant 2.0 TDI SCR Business |                    |
| Vehicle Identification number                  | WVVZZZ3CZME054686  |
| Mileage (Read)                                 | 131,364 km         |
| First registration                             | 27 Jan 2021        |
| Number of holders                              | 1                  |
| Power / Engine displacement                    | 110 kw / 1,968 ccm |
| Fuel type / Cylinder                           | Diesel / 4         |
| Gearbox / Number of gears                      | Manual / 6         |
| Type of drive                                  | Front drive        |
| Type of vehicle                                | Station wagon      |
| Colour / colour code                           | uranograu (I7F)    |
| Doors / Seats                                  | 5 / 5              |
| Upholstery type                                | Cloth              |
| Colour of upholstery                           | Grey-Black         |



| Vehicle details                           |                              |                         |   |
|---|------------------------------|-------------------------|---|
| Maintenance booklet / proof               | digital proof / incomplete   | Next maintenance in     | 0 km  |
| Last maintenance on / at                  | 09/2024 at 117,476 km        |                         |   |
| Key is / should be                        | 2 / 2                        | FZG documents           | ZB#2 (B) was available (copy), ZB#1 (S) was not available |
|   |                              | Letter No.              | FX412845  |
| Previous damage / Accident                | Detectable                   | Repainting              | Detectable  |
| Inspection conditions                     | Sufficient                   | Lifting equipment / pit | yes   |
| Test drive                                | Not performed                | Engine function test    | Performed   |
| Manufacturer key number/ type code number | 0603 / BQS 00630             |                         |   |
| Emission standard                         | EURO6;WLTP;AP;PI/CI; M, N1 I | Fine dust sticker       |   |
| Permitted total weight                    | 2,170 kg                     | Empty weight            |   |

| Tyres   |                |                             |              |             |
|---|----------------|-----------------------------|--------------|-------------|
| Mounted tyres   |                |                             |              |             |
| #   | Tyre size      | Type of tyre                | Manufacturer | Tread depth |
| 1)  | 215/60 R16 95V | Summer tyres on Light alloy | Continental  | 4mm / 4mm   |
| 2)  | 215/60 R16 95V | Summer tyres on Light alloy | Continental  | 7mm / 7mm   |
| Additional tyres  |                |                             |              |             |
| #   | Tyre size      | Type of tyre                | Manufacturer | Tread depth |
| 1)  | 215/60 R16 99H | Winter tyres on Light alloy | Goodyear     | 7mm / 6mm   |
| 2)  | 215/60 R16 99H | Winter tyres on Light alloy | Goodyear     | 7mm / 7mm   |
| Replacement   |                |                             |              |             |
| Typ   | Tyre size      | Type of tyre                | Manufacturer | Tread depth |
|   | Tirefit        | Expiration date 10/2024     |              |             |
| Legend: Tread depth information for tires on the left is in the first place, for tires on the right is in the second place on the axle in the direction of travel |                |                             |              |             |



## Equipment

### Standard equipment

- |   |  |
|---|--|
| <ul style="list-style-type: none"> <li>• Airbag for driver and front passenger</li> <li>• Anti-lock braking system (ABS)</li> <li>• Automatic distance control ACC including speed limiter</li> <li>• Cup holders (2) front</li> <li>• Brake light, third</li> <li>• Headlining in Mistral Grey</li> <li>• diesel particulate filter</li> <li>• Electronic parking brake including auto-hold function</li> <li>• Electronic stabilization program and electromechanical brake booster</li> <li>• Front windscreen in laminated safety glass, heat and sound insulating</li> <li>• Transmission: 6-speed manual transmission</li> <li>• ISOFIX anchorage points</li> <li>• Instrument cluster with electronic speedometer, odometer, trip meter, tachometer</li> <li>• Paint finish: Uni</li> <li>• LED taillights</li> <li>• Steering wheel: Multifunction steering wheel in leather</li> <li>• Multifunction display "Premium" with multi-color display</li> <li>• Mesh partition</li> <li>• Emergency braking assistant "Front Assist" (for automatic distance control ACC up to 210 km/h)</li> <li>• Upholstery: fabric "Weave"</li> <li>• Radio "Composition"</li> <li>• Radio accessories: Digital radio reception DAB+</li> <li>• Tire pressure monitoring indicator (passive)</li> <li>• LED taillights</li> <li>• Keyless start system without safe lock</li> <li>• Power steering</li> <li>• Seats: Lumbar supports in front</li> <li>• Start-stop system</li> <li>• Telephone interface</li> <li>• First aid kit, warning triangle and safety vest</li> <li>• Electronic immobilizer</li> </ul> | <ul style="list-style-type: none"> <li>• Airbag, head airbag system for front and rear passengers</li> <li>• App Connect</li> <li>• Exterior mirrors electrically adjustable and heated</li> <li>• Hill start assist</li> <li>• Chrome strips on the side windows</li> <li>• Roof rails black</li> <li>• Parking aid - warning signals for obstacles in the front and rear areas</li> <li>• Automatic headlight switching</li> <li>• Remote release for the trunk lid</li> <li>• Pedestrian detection</li> <li>• Luggage compartment floor can be raised</li> <li>• Interior light front and rear with switch-off delay and dimming function</li> <li>• Headrests (3) rear</li> <li>• Front headrests</li> <li>• LED fog lights and cornering lights</li> <li>• LED headlights with daytime running lights</li> <li>• Headlight range adjustment</li> <li>• Fatigue detection</li> <li>• Non-smoking version</li> <li>• Emergency call service</li> <li>• Package: Light and Vision Package "Plus"</li> <li>• Proactive occupant protection system in conjunction with "Front Assist"</li> <li>• Rain sensor</li> <li>• Wheels: 4 light alloy wheels "Sepang" 6.5 J x 16</li> <li>• Rear seat bench undivided, backrest asymmetrically divided and foldable, with center armrest</li> <li>• Seat belts: three-point automatic seat belt</li> <li>• Seats: Front seats height adjustable</li> <li>• 12V socket on the rear center console</li> <li>• Textile floor mats</li> <li>• Warning sound and light for unfastened seat belts at the front and rear</li> </ul> |
|---|--|

### Extra equipment

- |   |   |
|---|---|
| <ul style="list-style-type: none"> <li>• Folding trailer hitch (with electric release)</li> <li>• Navigation system "Discover Media" including "Streaming &amp; Internet" (4x20 watt user interface with proximity sensor, double tuner with phase diversity, vehicle menu, speed, volume adjustment, 2D map display, sound control, 3-way TFT display with touchscreen operation, navigation system "Discover Media" including "Streaming &amp; Internet", MP3 radio, telephone contact address for navigation, telephone interface, 2 USB also for iPod/iPhone, traffic sign recognition, "VW Media Control" We Connect Plus, 3 years, including We Connect destination guidance, dynamic RDS TMC tuner)</li> </ul> | <ul style="list-style-type: none"> <li>• App-Connect Wireless (Volkswagen offers three interfaces for connecting smartphones with numerous options: - Apple CarPlay - Android Auto from Google - MirrorLink)</li> </ul> |
|---|---|



- Package: Driver assistance package in conjunction with Business Premium package (Automatic distance control ACC with speed limiter - Driving assistant "Travel Assist" and lane keeping assistant "Lane Assist" - Emergency braking assistant "Front Assist" (for automatic distance control ACC up to 210 km/h) - Parking steering assistant "Park Assist" including parking aid - Lane change assistant "Side Assist" and rear parking assistant)
- "Comfort" telephone interface with inductive charging function (hands-free system)
- Package: "Business Premium" package including navigation (from Business) (2 USB-C ports in the front, 1 USB-C charging socket in the rear, 230 V socket, App-Connect including wireless, Apple CarPlay, Android Auto, "Travel Assist" driving assistant and "Lane Assist" lane keeping assistant, Air Care Climatronic with 3-zone temperature control, allergen filter and rear controls, electric lumbar supports on the driver's side, massage function on the driver's side, "Rear View" reversing camera, heated windshield washer nozzles, Comfort telephone interface, inductive charging function, heated front seats)
- panoramic tilt/slide roof (with panoramic roof at the rear)
- Proactive occupant protection system and lane change assistant "Side Assist" (Proactive occupant protection system in conjunction with "Front Assist" and "Side Assist" - lane change assistant "Side Assist" and rear traffic assistant)

## Brief expert findings

|                      |  |
|----------------------|--|
| Documents submitted  | At the time of the inspection, the registration certificate part 2 (letter) was available, but the registration certificate part 1 (certificate) was not available. (Copy) |
| VIN comparison       | The vehicle identification number (VIN) was read and the undersigned verified that it matched the documents submitted during the inspection.                               |
| Inspection           | The inspection conditions were sufficient for the assessment of the vehicle.<br>Lifting equipment and a pit were available for examining the vehicle.                      |
| Test drive           | No test drive/maneuvering was carried out during the inspection of the vehicle.  |
| Engine function test | An engine test run was performed.  |

## Value reducing factors

| No. | Component group      | Description  |
|-----|----------------------|--|
| 1   | Equipment            | Tirefit filler - Expired - Replace                               |
| 2   | Boot lid / rear door | Boot lid - dent(s) - Smooth repair work                          |
| 3   | Misc.                | Inspection / maintenance - Due - Perform                         |
| 4   | Front bumper         | Front bumper - Scratch(es) - Paint                               |
| 5   | Rear bumper          | Rear bumper - Deformed - Repair and paint                        |
| 6   | Bonnet               | Bonnet (Anätzung und 9 Dellen) - Paint defect - Repair and paint |
| 7   | Headlight            | Headlight - left side - Scratch(es) - Replace                    |

## Wear and tear

| No. | Component group | Description                             |
|-----|-----------------|---|
| 1   | Vehicle glazing | Windscreen - Stone chips - No deduction |
| 2   | Roof            | Roof - dent(s) - No deduction           |

The vehicle shows signs of wear commensurate with its age and use.

## Previous damages

| No. | Previous damage                                     | Extent of damage (Net) |
|-----|---|------------------------|
| 1   | Rear, Provided by user / customer, from 30 Jan 2024 | 3.903,65 €             |



## Repainting

### No. Repainting

1 Bonnet

## Paint coat thickness measurement

Bonnet

210 µm

## Order/Scope of order

The order was placed to prepare a sales report for the vehicle described. This includes the following:

- Description of core relevant information about the vehicle
- Documentation of equipment features  
(*Delivery by third-party service providers*)
- Documentation of damage, defects, missing parts
- Documentation of previous damage, unrepaired previous damage, repainting
- a brief visual or functional inspection of the equipment details if possible.  
(*Functional tests of driver assistance systems are not included in the scope of services!*)
- a photo documentation of the vehicle

## Basis for the order

This product is based on the Alphabet Fuhrpark GmbH guidelines for vehicle returns and valuations. The expert makes the explicit findings in each individual case objectively within the framework of the specified standards based on his or her own expertise.

The vehicle inspection takes place in a disassembled state.

Damage or defects that can only be detected during disassembly/diagnosis work or through advanced knowledge remain within the scope of the prognosis risk. An extended risk exists for concealed defects caused by fraudulent deception and not identifiable by the expert.

Damage or defects resulting from normal use or wear and tear of the vehicle will be accepted according to the applicable standard.

There was no explicit identification or monetary consideration of the expected features within the product.

Features which in their nature and severity slightly exceed normal use but do not constitute unacceptable damage will be documented and identified under signs of use if necessary.

Damage or defects which, according to the underlying standard, can no longer be attributed to normal use or wear and tear are listed in the product under "Depreciating Factors".

Depending on the product specification, a monetary ID can be provided. If this takes place, the costs can be 100% d or pro rata depending on the vehicle's age and mileage.

## Previous damages

According to available information previous damages were repaired at the vehicle. Traces of repairs, which allow conclusions about the area of repair, were not recognizable during the inspection.

## Comments

- Winterradsatz ist kein Bestandteil des Auslieferungsumfangs.

- Das Fahrzeug weist rundherum erhöhte Lackwerte auf.





**Figure 1:** Diagonal front (left)



**Figure 2:** Diagonal front (right)



**Figure 3:** Diagonal rear (left)



**Figure 4:** Diagonal rear (right)



**Figure 5:** Interior - front



**Figure 6:** Interior - rear





Figure 7: Instrument cluster



Figure 8: Instrument panel



Figure 9: interior 360° view



Figure 10: Cargo area

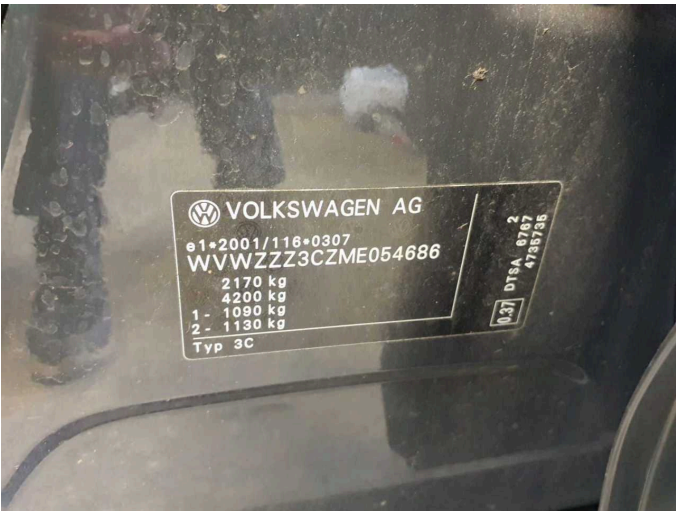


Figure 11: VIN



Figure 12: Mounted tyres



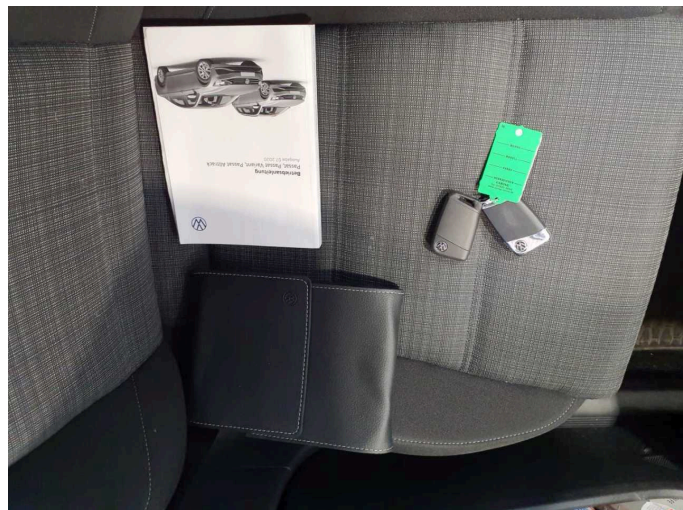


Figure 13: Documents



Figure 14: Additional tyres



Figure 15: Navigation



Figure 16: Misc.



Figure 17: Misc.



Figure 18: Misc.





Figure 19: Misc.



Figure 20: Misc.



Figure 21: Misc.



Figure 22: Misc.



Figure 23: Misc.

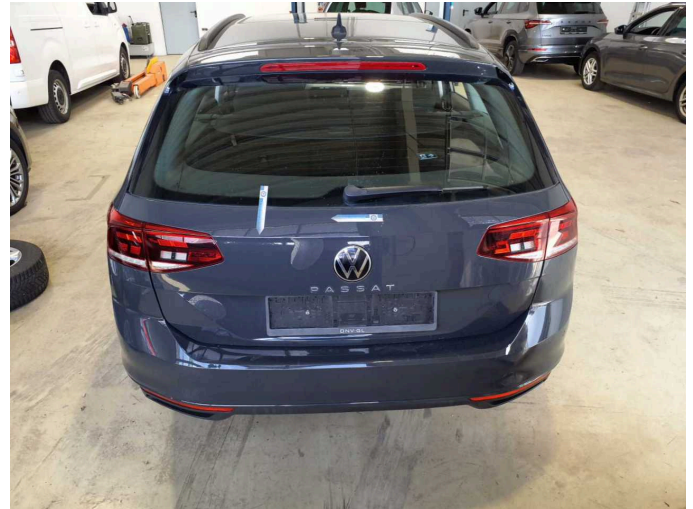


Figure 24: Misc.





**Damage 1:** Equipment: Tirefit filler - Expired - Replace



**Damage 2:** Boot lid / rear door: Boot lid - dent(s) - Smooth repair work



**Damage 2:** Boot lid / rear door: Boot lid - dent(s) - Smooth repair work



**Damage 2:** Boot lid / rear door: Boot lid - dent(s) - Smooth repair work



**Damage 3:** Misc.: Inspection / maintenance - Due - Perform

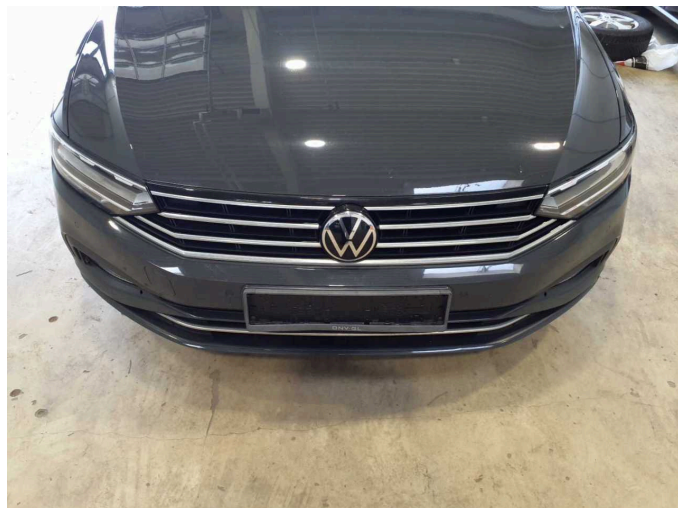


**Damage 4:** Front bumper: Front bumper - Scratch(es) - Paint





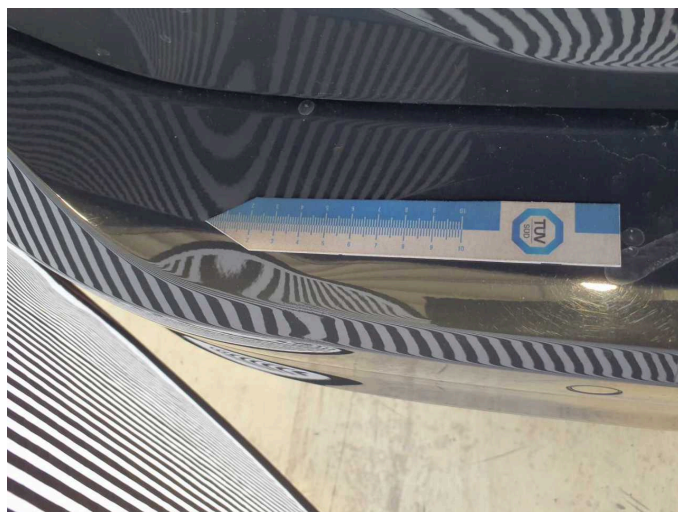
**Damage 4:** Front bumper: Front bumper - Scratch(es) - Paint



**Damage 4:** Front bumper: Front bumper - Scratch(es) - Paint



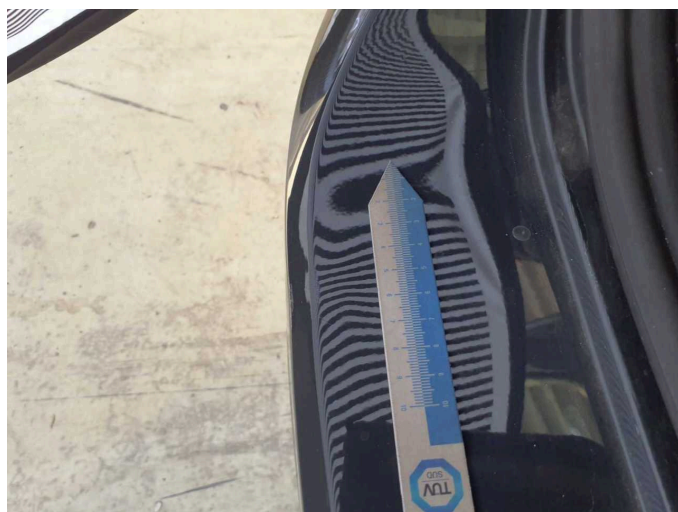
**Damage 5:** Rear bumper: Rear bumper - Deformed - Repair and paint



**Damage 5:** Rear bumper: Rear bumper - Deformed - Repair and paint



**Damage 5:** Rear bumper: Rear bumper - Deformed - Repair and paint

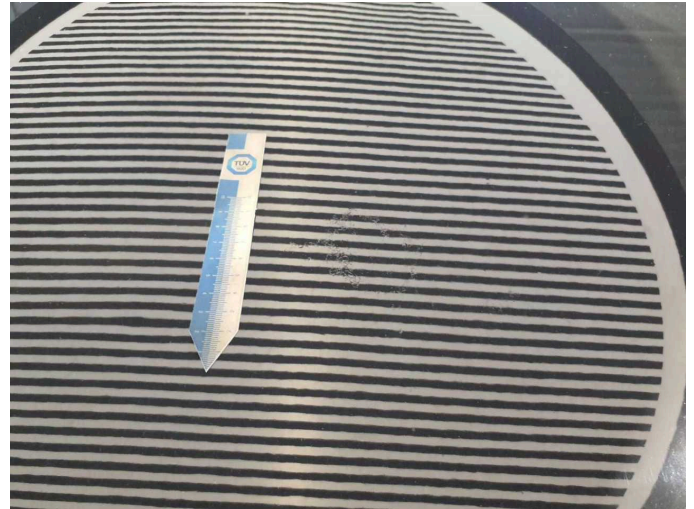


**Damage 5:** Rear bumper: Rear bumper - Deformed - Repair and paint





**Damage 6:** Bonnet: Bonnet (Anätzung und 9 Dellen) - Paint defect - Repair and paint



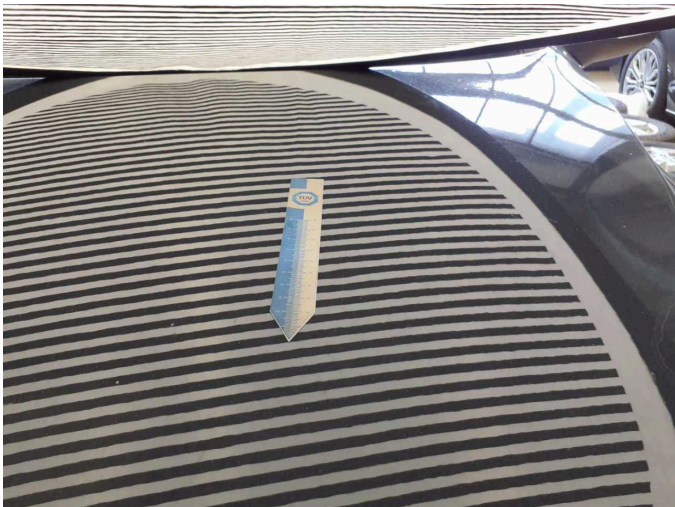
**Damage 6:** Bonnet: Bonnet (Anätzung und 9 Dellen) - Paint defect - Repair and paint



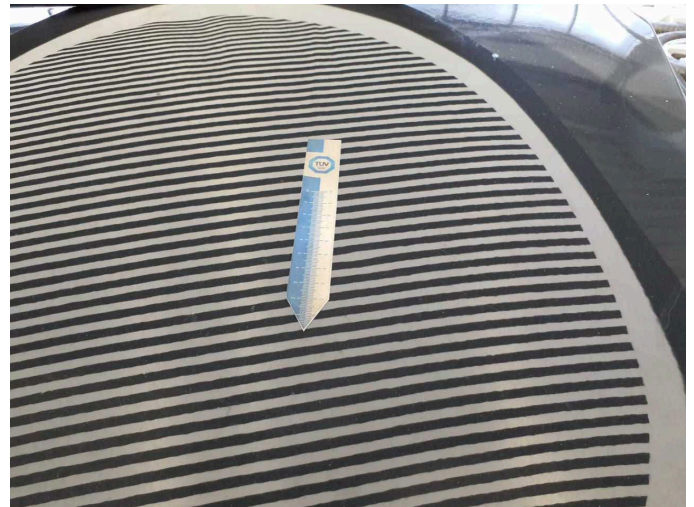
**Damage 6:** Bonnet: Bonnet (Anätzung und 9 Dellen) - Paint defect - Repair and paint



**Damage 6:** Bonnet: Bonnet (Anätzung und 9 Dellen) - Paint defect - Repair and paint

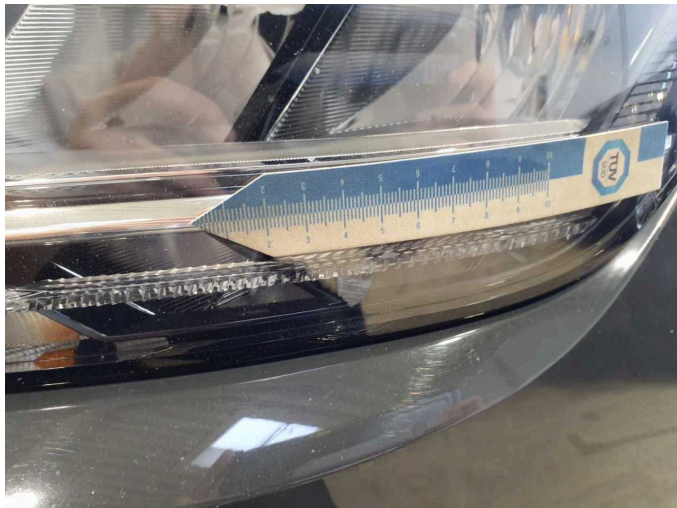


**Damage 6:** Bonnet: Bonnet (Anätzung und 9 Dellen) - Paint defect - Repair and paint

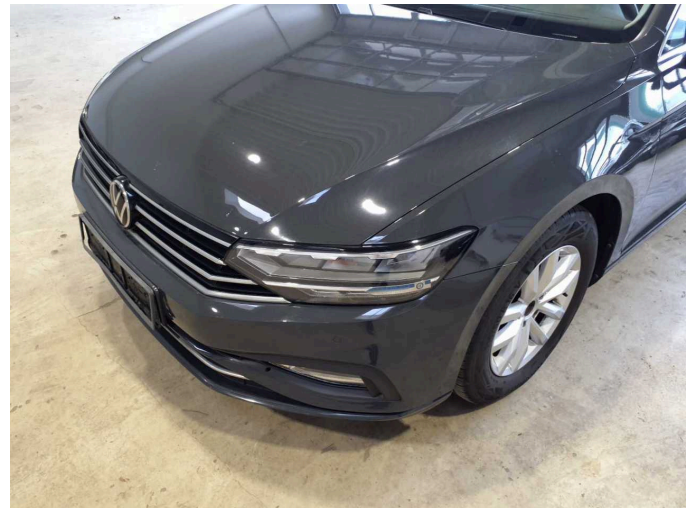


**Damage 6:** Bonnet: Bonnet (Anätzung und 9 Dellen) - Paint defect - Repair and paint





**Damage 7:** Headlight: Headlight - left side - Scratch(es) - Replace



**Damage 7:** Headlight: Headlight - left side - Scratch(es) - Replace



**Repainting 1:** Bonnet



**Repainting 1:** Bonnet