



Expertise

Protocol number: 40671128
Order No. / Reference: 24954281
Inspection date: 18 Jul 2025

Manufacturer: Volkswagen

Model: Passat Variant 2.0 TDI SCR Business

VIN: WVGZZZ3CZME006237



Vehicle details

Manufacturer / Type / Model / Equipment

Volkswagen Passat Variant 2.0 TDI SCR Business

Vehicle Identification number WVGZZZ3CZME006237

Mileage (Read) 77,222 km

First registration 9 Dec 2020

Number of holders 1

Power / Engine displacement 110 kw / 1,968 ccm

Fuel type / Cylinder Diesel / 4

Gearbox / Number of gears Manual / 6

Type of drive Front drive

Type of vehicle Station wagon

Colour / colour code Reflexsilber-metallic (A7W)

Doors / Seats 5 / 5

Upholstery type Cloth

Colour of upholstery Black-Anthracite



Vehicle details

Maintenance booklet / proof	digital proof / complete	Next maintenance in	4,800 km
Last maintenance on / at	01/2025 at 51,983 km		
Key is / should be	2 / 2	FZG documents	ZB#2 (B) was available (copy), ZB#1 (S) was not available
		Letter No.	FX387885
Previous damage / Accident	None detectable	Repainting	None detectable
Inspection conditions	Sufficient	Lifting equipment / pit	yes
Test drive	Not performed	Engine function test	Performed
Manufacturer key number/ type code number	0603 / BQS 00630		
Emission standard	EURO6;WLTP;AP;PI/CI; M, N1 I	Fine dust sticker	
Permitted total weight	2,170 kg	Empty weight	

Tyres

Mounted tyres

#	Tyre size	Type of tyre	Manufacturer	Tread depth
1)	215/60 R16 95V	Summer tyres on Light alloy	Bridgestone	4mm / 4mm
2)	215/60 R16 95V	Summer tyres on Light alloy	Bridgestone	4mm / 4mm

Additional tyres

#	Tyre size	Type of tyre	Manufacturer	Tread depth
1)	215/60 R16 99H	Winter tyres on Steel	Semperit	4mm / 4mm
2)	215/60 R16 99H	Winter tyres on Steel	Semperit	5mm / 5mm

Replacement

Typ	Tyre size	Type of tyre	Manufacturer	Tread depth
	Tirefit	Expiration date 10/2028		

Legend: Tread depth information for tires on the left is in the first place, for tires on the right is in the second place on the axle in the direction of travel



Equipment

Standard equipment

- Airbag for driver and front passenger
- Anti-lock braking system (ABS)
- Automatic distance control ACC "stop & go", including speed limiter
- Hill start assist
- Chrome strips on the side windows
- Roof rails black
- tachometer
- Electronic parking brake including auto-hold function
- Electronic stabilization program and electromechanical brake booster
- Front windscreen in laminated safety glass, heat and sound insulating
- Transmission: 6-speed manual transmission
- ISOFIX anchorage points
- Air conditioning
- Headrests (3) rear
- Front headrests
- LED taillights
- Steering wheel: Multifunction steering wheel in leather
- Multifunction display "Premium" with multi-color display
- Mesh partition
- Emergency braking assistant "Front Assist" (for automatic distance control ACC up to 210 km/h)
- Upholstery: fabric "Weave"
- Radio "Composition"
- Radio accessories: Digital radio reception DAB+
- Tire pressure monitoring indicator (passive)
- LED taillights
- Leather gearshift knob
- Keyless start system without safe lock
- Seat belts: three-point automatic seat belt
- Seats: Front seats height adjustable
- 12V socket on the rear center console
- Textile floor mats
- Warning sound and light for unfastened seat belts at the front and rear
- Airbag, head airbag system for front and rear passengers
- App Connect
- Exterior mirrors electrically adjustable and heated
- Cup holders (2) front
- Brake light, third
- Headlining in Mistral Grey
- diesel particulate filter
- Parking aid - warning signals for obstacles in the front and rear areas
- Automatic headlight switching
- Remote release for the trunk lid
- Pedestrian detection
- Luggage compartment floor can be raised
- Interior light front and rear with switch-off delay and dimming function
- Instrument cluster with electronic speedometer, odometer, trip meter, tachometer
- LED fog lights and cornering lights
- LED headlights with daytime running lights
- Headlight range adjustment
- Fatigue detection
- Non-smoking version
- Emergency call service
- Package: Light and Vision Package "Plus"
- Proactive occupant protection system in conjunction with "Front Assist"
- Rain sensor
- Wheels: 4 light alloy wheels "Sepang" 6.5 J x 16
- Rear seat bench undivided, backrest asymmetrically divided and foldable, with center armrest
- Power steering
- Seats: Lumbar supports in front
- Start-stop system
- Telephone interface
- First aid kit, warning triangle and safety vest
- Electronic immobilizer

Extra equipment

- App-Connect Wireless
- Paint finish: metallic
- Anti-theft alarm system (interior monitoring, backup horn and tow-away protection - illuminated vanity mirror in the sun visors, extendable sun visors)



- Navigation system "Discover Media" including "Streaming & Internet" (4x20 watt user interface with proximity sensor, double tuner with phase diversity, vehicle menu, speed, volume adjustment, 2D map display, sound control, 3-way TFT display with touchscreen operation, navigation system "Discover Media" including "Streaming & Internet", MP3 radio, telephone contact address for navigation, telephone interface, 2 USB also for iPod/iPhone, traffic sign recognition, "VW Media Control" We Connect Plus, 3 years, including We Connect destination guidance, dynamic RDS TMC tuner)
- Keyless start system with safe security
- "Comfort" telephone interface with inductive charging function (hands-free system)
- Package: "Business Premium" package including navigation (from Business) (2 USB-C ports in the front, 1 USB-C charging socket in the rear, 230 V socket, App-Connect including wireless, Apple CarPlay, Android Auto, "Travel Assist" driving assistant and "Lane Assist" lane keeping assistant, Air Care Climatronic with 3-zone temperature control, allergen filter and rear controls, electric lumbar supports on the driver's side, massage function on the driver's side, "Rear View" reversing camera, heated windshield washer nozzles, Comfort telephone interface, inductive charging function, heated front seats)

Brief expert findings

Documents submitted	At the time of the inspection, the registration certificate Part 2 (letter) was available, but the registration certificate Part 1 (certificate) was not. (Copy)
VIN comparison	The vehicle identification number (VIN) was read and the undersigned verified that it matched the documents submitted during the inspection.
Inspection	The inspection conditions were sufficient for the assessment of the vehicle. Lifting equipment and a pit were available for examining the vehicle.
Test drive	No test drive/maneuvering was carried out during the inspection of the vehicle.
Engine function test	An engine test run was performed.

Value reducing factors

No.	Component group	Description
1	Door - rear left side	Door - dent(s) - Smooth repair work
2	Screen cleaning	Wiper arm - rear (Abdeckung) - Missing - Replace
3	Side panel - rear right side	Side panel - Dent / paintcoat damage - Smart repair
4	Rear bumper	Rear bumper - Scratched - Paint
5	Front bumper	Front bumper (Steinschlag) - Scratched - Repair and paint

Wear and tear

No.	Component group	Description
1	Headlight	Headlight - right side - Stone chips - No deduction
2	Headlight	Headlight - left side - Stone chips - No deduction
3	Vehicle glazing	Windscreen - Stone chips - No deduction
4	Boot lid / rear door	Boot lid - dent(s) - No deduction
5	Body	Body (oberflächlich) - Scratch(es) - No deduction
6	Trim / covers	Boot lid - interior trim - Scratched - No deduction
7	Bonnet	Bonnet (+ Steinschläge) - dent(s) - No deduction
8	2nd wheel set	2 tyres - Does not meet the leasing specifications - No deduction

The vehicle shows signs of wear commensurate with its age and use.



Order/Scope of order

The order was placed to prepare a sales report for the vehicle described. This includes the following:

- Description of core relevant information about the vehicle
- Documentation of equipment features
(*Delivery by third-party service providers*)
- Documentation of damage, defects, missing parts
- Documentation of previous damage, unrepaired previous damage, repainting
- a brief visual or functional inspection of the equipment details if possible.
(*Functional tests of driver assistance systems are not included in the scope of services!*)
- a photo documentation of the vehicle

Basis for the order

This product is based on the Alphabet Fuhrpark GmbH guidelines for vehicle returns and valuations. The expert makes the explicit findings in each individual case objectively within the framework of the specified standards based on his or her own expertise.

The vehicle inspection takes place in a disassembled state.

Damage or defects that can only be detected during disassembly/diagnosis work or through advanced knowledge remain within the scope of the prognosis risk. An extended risk exists for concealed defects caused by fraudulent deception and not identifiable by the expert.

Damage or defects resulting from normal use or wear and tear of the vehicle will be accepted according to the applicable standard.

There was no explicit identification or monetary consideration of the expected features within the product.

Features which in their nature and severity slightly exceed normal use but do not constitute unacceptable damage will be documented and identified under signs of use if necessary.

Damage or defects which, according to the underlying standard, can no longer be attributed to normal use or wear and tear are listed in the product under "Depreciating Factors".

Depending on the product specification, a monetary ID can be provided. If this takes place, the costs can be 100% d or pro rata depending on the vehicle's age and mileage.

Previous damages

Apparently, no repaired previous damage could be found on the vehicle.

Comments

- Winterradsatz ist kein Bestandteil des Auslieferungsumfangs
- Fahrzeug weist erhöhte Lackschichtdicke auf 190µm-210µm



Figure 1: Diagonal front (left)



Figure 2: Diagonal front (right)



Figure 3: Diagonal rear (left)



Figure 4: Diagonal rear (right)



Figure 5: Interior - front



Figure 6: Interior - rear



Figure 7: Instrument cluster



Figure 8: Instrument panel



Figure 9: interior 360° view ([Online link](#))



Figure 10: Cargo area

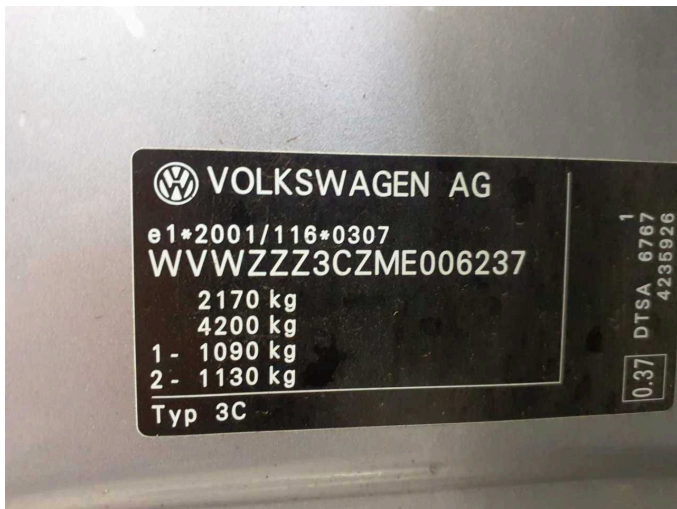


Figure 11: VIN



Figure 12: Mounted tyres

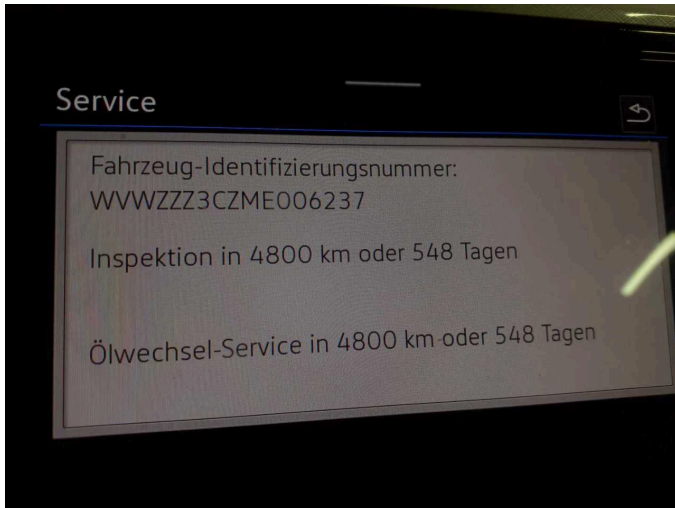


Figure 13: Documents

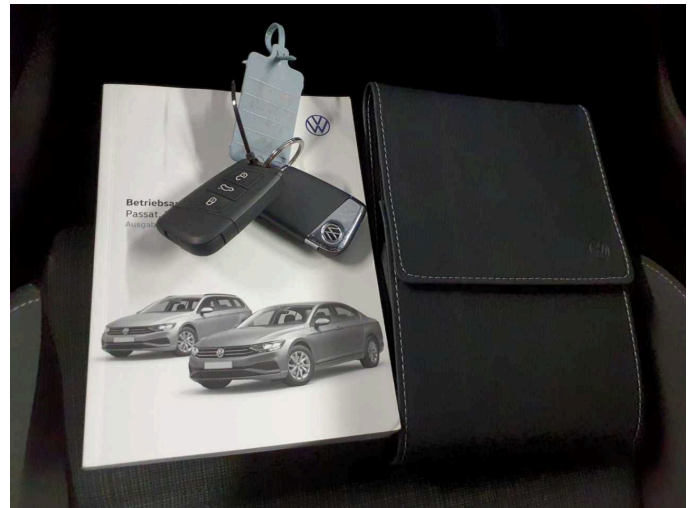


Figure 14: Documents



Figure 15: Additional tyres



Figure 16: Navigation

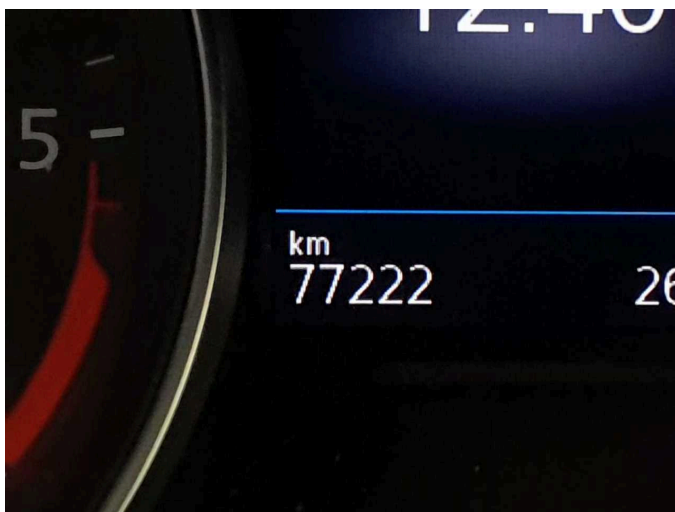


Figure 17: Misc.



Figure 18: Misc.



Figure 19: Misc.



Figure 20: Misc.



Figure 21: Misc.



Figure 22: Misc.



Figure 23: Misc.



Figure 24: Misc.



Figure 25: Misc.

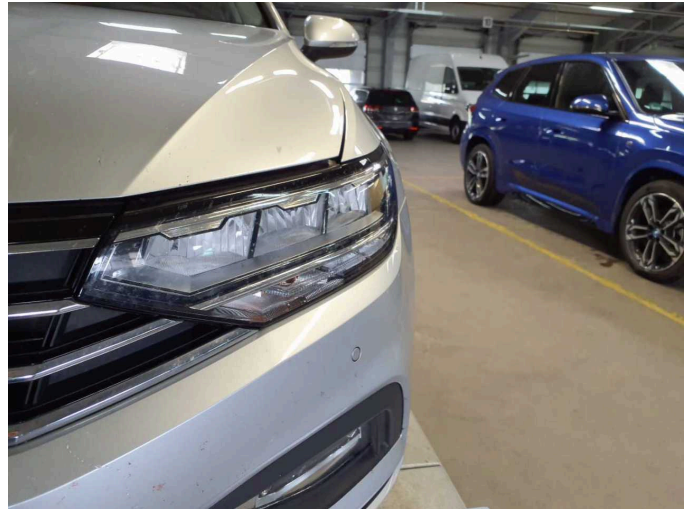


Figure 26: Misc.



Figure 27: Misc.



Figure 28: Misc.



Figure 29: Misc.



Figure 30: Misc.

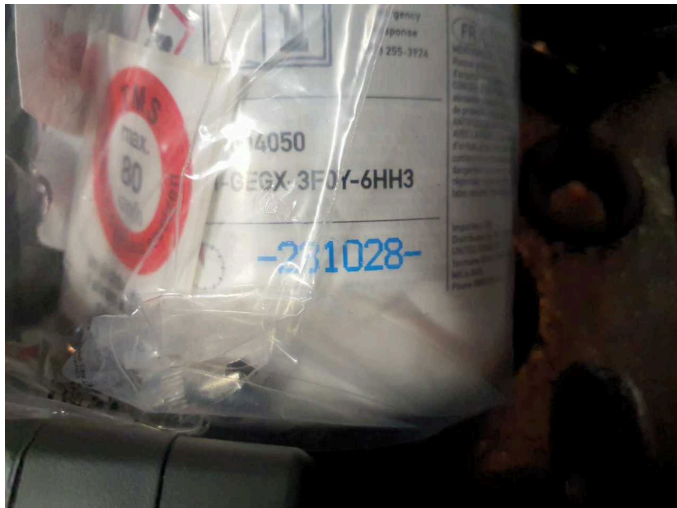


Figure 31: Misc.



Damage 1: Door - rear left side: Door - dent(s) - Smooth repair work



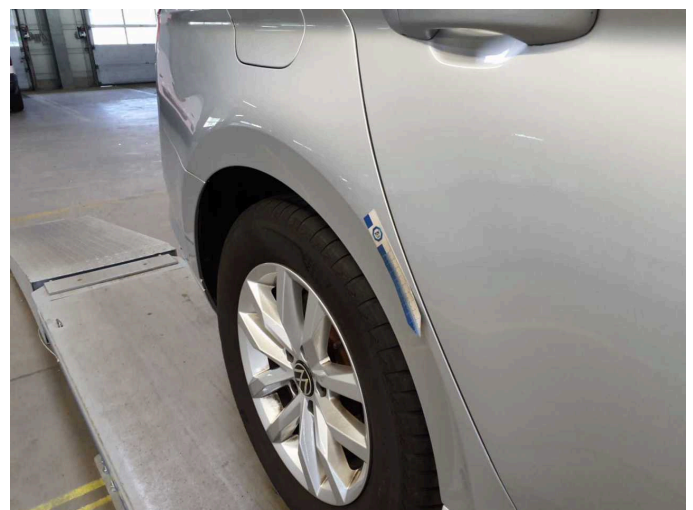
Damage 1: Door - rear left side: Door - dent(s) - Smooth repair work



Damage 2: Screen cleaning: Wiper arm - rear (Abdeckung) - Missing - Replace



Damage 2: Screen cleaning: Wiper arm - rear (Abdeckung) - Missing - Replace



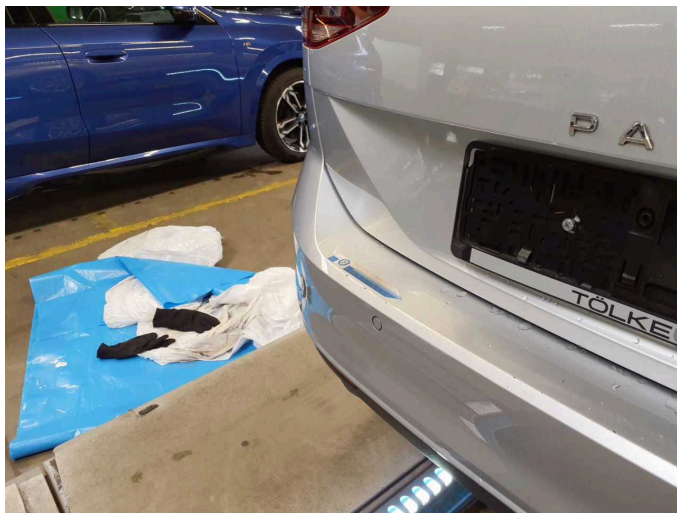
Damage 3: Side panel - rear right side: Side panel - Dent / paintcoat damage - Smart repair



Damage 3: Side panel - rear right side: Side panel - Dent / paintcoat damage - Smart repair



Damage 3: Side panel - rear right side: Side panel - Dent / paintcoat damage - Smart repair



Damage 4: Rear bumper: Rear bumper - Scratched - Paint



Damage 4: Rear bumper: Rear bumper - Scratched - Paint



Damage 4: Rear bumper: Rear bumper - Scratched - Paint



Damage 4: Rear bumper: Rear bumper - Scratched - Paint



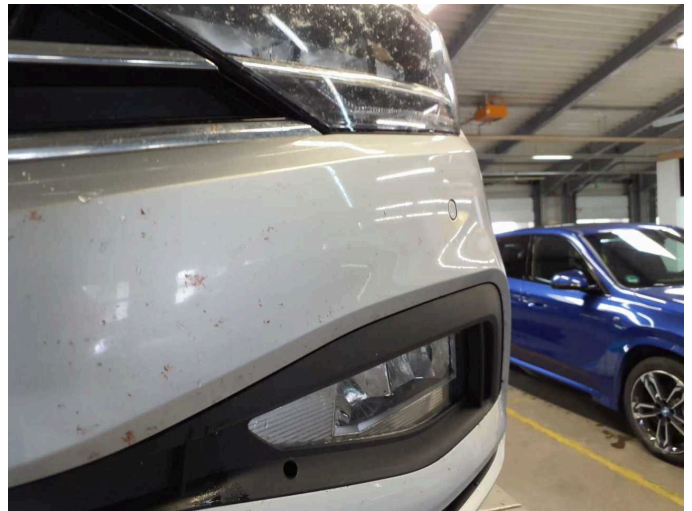
Damage 5: Front bumper: Front bumper (Steinschlag) - Scratched - Repair and paint



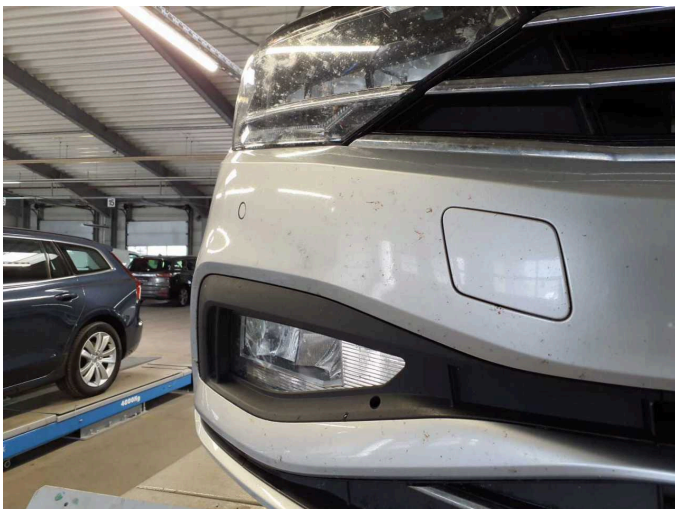
Damage 5: Front bumper: Front bumper (Steinschlag) - Scratched - Repair and paint



Damage 5: Front bumper: Front bumper (Steinschlag) - Scratched - Repair and paint



Damage 5: Front bumper: Front bumper (Steinschlag) - Scratched - Repair and paint



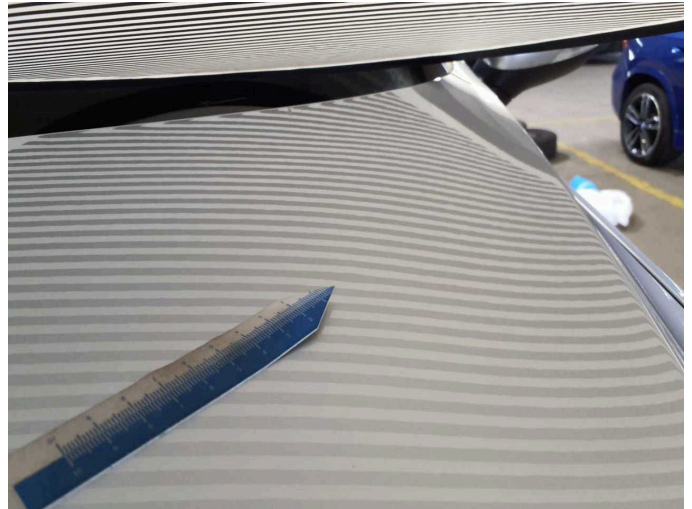
Damage 5: Front bumper: Front bumper (Steinschlag) - Scratched - Repair and paint



Wear and tear 3: Vehicle glazing: Windscreen - Stone chips - No deduction



Wear and tear 7: Bonnet: Bonnet (+ Steinschläge) - dent(s) - No deduction



Wear and tear 7: Bonnet: Bonnet (+ Steinschläge) - dent(s) - No deduction



Wear and tear 7: Bonnet: Bonnet (+ Steinschläge) - dent(s) - No deduction



Wear and tear 7: Bonnet: Bonnet (+ Steinschläge) - dent(s) - No deduction



Wear and tear 7: Bonnet: Bonnet (+ Steinschläge) - dent(s) - No deduction



Wartungshistorie

(gemäß Auftraggeber Informationen)

Fahrgestellnummer: WVVZZZ3CZME006237

Hersteller / Modell: VOLKSWAGEN VW Passat Variant 2.0 TDI SCR Business

Datum	KM-Stand	Beschreibung
17.01.2025	51.983	Bremsflüssigkeit; Bremsflüssigkeit ern; Motoröl b. Wartung; Ölfilter ern; Regelwartungsdienst; Wartung Sonstiges
29.12.2023	28.847	AU
20.12.2022	19.357	Motoröl b. Wartung; Ölfilter ern; Regelwartungsdienst; Wartung Sonstiges