



Expertise

Protocol number: 41434153
Order No. / Reference: 25174301
Inspection date: 9 Sept 2025

Manufacturer: Volkswagen	Model: Passat Variant 2.0 TDI SCR DSG Elegance
VIN: WVGZZZ3CZLE128170	



Vehicle details	
Manufacturer / Type / Model / Equipment	
Volkswagen Passat Variant 2.0 TDI SCR DSG Elegance	
Vehicle Identification number	WVGZZZ3CZLE128170
Mileage (Read)	134,202 km
First registration	5 Aug 2020
Number of holders	1
Next periodical technical inspection	10/2025
(Report on hand)	
Power / Engine displacement	140 kw / 1,968 ccm
Fuel type / Cylinder	Diesel / 4
Gearbox / Number of gears	Automatic / 7
Type of drive	Front drive
Type of vehicle	Station wagon
Colour / colour code	Reflexsilber-metallic (A7W)
Doors / Seats	5 / 5
Upholstery type	Leather
Colour of upholstery	Black-Anthracite
Vehicle with smoke odor	no



Vehicle details			
Maintenance booklet / proof	digital proof / complete	Next maintenance in	10,500 km
Last maintenance on / at	01/2025 at 114,649 km		
Key is / should be	2 / 2	FZG documents	ZB#2 (B) was available (copy), ZB#1 (S) was not available
		Letter No.	FU496050
Previous damage / Accident	Detectable	Repainting	Detectable
Inspection conditions	sufficient	Lifting equipment / pit	yes
Test drive	short drive on the company premises	Engine function test	Performed
Manufacturer key number/ type code number	0603 / BRA 00156		
Emission standard	EURO6;WLTP;DG;PI/CI; M, N1 I	Fine dust sticker	
Permitted total weight	2,200 kg	Empty weight	

Tyres				
Mounted tyres				
#	Tyre size	Type of tyre	Manufacturer	Tread depth
1)	215/55 R17 94W	Summer tires (with run-flat tires) on Light alloy	Pirelli	3 mm
	215/55 R17 94W	Summer tyres on Light alloy	Continental	4 mm
2)	215/55 R17 94W	Summer tyres on Light alloy	Continental	6 mm
	215/55 R17 94W	Summer tires (with run-flat tires) on Light alloy	Pirelli	3 mm
Legend: Tread depth information for tires on the left is in the first place, for tires on the right is in the second place on the axle in the direction of travel				

Equipment

Standard equipment

- Driver and front passenger airbags (passenger airbag deactivation switch)
- Anti-lock braking system (ABS)
- Automatic distance control ACC "stop & go", including speed limiter
- Exterior mirrors electrically adjustable and heated (driver's side aspherical)
- Cup holders (2) front
- Hill start assist
- Chrome strips on the side windows
- Roof rails, silver anodized
- tachometer
- Electronic parking brake including auto-hold function
- Electronic stabilization program and electromechanical brake booster
- Remote release for the trunk lid
- Pedestrian detection
- Luggage compartment floor can be raised
- Interior lights front and rear with switch-off delay and dimming function (2 reading lights front)
- IQ.LIGHT - LED matrix headlights, including dark red LED taillights (Dynamic Light Assist dynamic high beam control for LED matrix headlights - LED fog lights and cornering lights - LED taillights with dynamic indicators - LED headlights with LED daytime running lights, cornering lights, and dynamic indicators - Dynamic headlight range control with dynamic cornering lights - With individual installation - Rear fog lights on both sides, reversing lights on both sides)
- Steering wheel: Multifunction steering wheel in leather, with shift paddles
- Premium multifunction display with multi-color display (including: - Outside temperature - Average fuel consumption - Average speed - Distance traveled - Driving time - Gear recommendation - Speed warning - Comfort - Current fuel consumption - Range - Service - Time with extended display options, e.g.: - Digital speedometer - Digital oil temperature indicator - Light & visibility - Language - Auxiliary heating - Winter tires)
- Emergency call service (no registration required, service is activated upon delivery)
- Package: Winter (automatically heated windscreen washer nozzles - heated front seats)
- Upholstery: "Vienna" leather (front seat center panels and outer rear seats in Alcantara, inner seat bolsters in "Vienna" leather)
- Composition radio (16.5 cm touchscreen, 8 speakers, 4 x 20 watt output, diversity antenna for FM reception, dual tuner, RDS, MP3 playback, USB-C interface, 3-way tone control)
- Airbag, head airbag system for front and rear passengers (including front side airbags)
- App-Connect (Volkswagen offers three interfaces for connecting smartphones with numerous options: - Apple CarPlay - Android Auto from Google - MirrorLink)
- Exterior mirrors with ambient lighting and passenger mirror lowering (folding and heated - dimming on driver's side)
- Brake light, third
- Headlining in Mistral Grey
- diesel particulate filter
- Parking aid - warning signals for obstacles in the front and rear areas
- Automatic headlight switching ("Leaving home" function and manual "Coming home" function)
- Front windscreen in laminated safety glass, heat and sound insulating
- Transmission: 7-speed DSG (7-speed dual-clutch transmission DSG)
- Interior mirror automatically dimming
- ISOFIX anchor points (for attaching two child seats to the rear seats, including i-Size child seats)
- Air Care Climatronic air conditioning system with 3-zone temperature control and allergen filter
- Instrument cluster with electronic speedometer, odometer, trip meter, tachometer
- Headrests (3) rear
- Front headrests (safety-optimized, length and height adjustable)
- Headlight range adjustment
- Make-up mirrors in the sun visors
- Fatigue detection (detects signs of driver fatigue based on characteristic steering behavior, time of day, and driving duration and issues a visual and acoustic warning)
- Mesh partition
- Non-smoking version (storage compartment and 12 V socket at the front)
- Emergency braking assistant "Front Assist" (for automatic distance control ACC up to 210 km/h)
- Package: "Design and Comfort" (Silver anodized roof rails - Stainless steel front and rear door sills - Automatically heated front windshield washer jets - Alcantara seat center panels, seat inner bolsters, and center armrest surfaces in "Vienna" leather - Front sports comfort seats - Heated front seats)
- Proactive occupant protection system in conjunction with "Front Assist" (detects critical traffic situations with increased accident potential - prepares vehicle occupants and the vehicle for a possible accident by tightening the front seat belts, restraining the driver and front passenger, and closing open windows and the sunroof except for a crack)



- Radio accessories: Digital radio reception DAB+ (reception of digitally broadcast radio stations and traffic information in addition to the analogue station offering - reception depends on the local availability of digital networks - expanded range of radio programs - improved reception performance)
- Wheels: AirStop tires 215/55 R 17
- Rear seat bench undivided, backrest asymmetrically split and foldable, with center armrest (and through-loading option)
- Seat belts: Three-point automatic seat belt (Seat belt for middle rear seat - Seat belts for outer rear seats - Front seat belts with height adjustment and belt tensioner)
- Start-stop system (with brake energy recovery)
- 12V socket on the rear center console
- Textile floor mats (front and rear)
- Warning sound and light for unfastened seat belts at the front and rear

- Rain sensor
- Tire pressure monitoring indicator (passive)
- Wheels: 4 light alloy wheels "Istanbul" (5-twin-spoke design) 7 J x 17 (painted in Sterling Silver)
- LED taillights
- Leather gearshift knob
- Keyless start system without safe lock
- Power steering (electromechanical, speed-dependent)
- Seats: Lumbar supports in front (driver's side electrically adjustable)
- Seats: Height-adjustable front seats (ergoComfort seat on the driver's side - with electric backrest adjustment)
- Telephone interface
- First aid kit, warning triangle and safety vest
- Electronic immobilizer

Extra equipment

- Decorative inlay: precious wood "Silver Birch" (for instrument panel and center console)
- Fire extinguisher
- Keyless start system with safe security
- Luggage net
- Package: "Business Premium" package including navigation (from Business) (2 USB-C ports in the front, 1 USB-C charging socket in the rear, 230 V socket, App-Connect including wireless, Apple CarPlay, Android Auto, "Travel Assist" driving assistant and "Lane Assist" lane keeping assistant, Air Care Climatronic with 3-zone temperature control, allergen filter and rear controls, electric lumbar supports on the driver's side, massage function on the driver's side, "Rear View" reversing camera, heated windshield washer nozzles, Comfort telephone interface, inductive charging function, heated front seats)
- Paint finish: metallic
- Panoramic tilt/slide roof (with rear panoramic roof)
- Voice control
- Wheels: Tire Mobility Set no longer available
- Wirelessly heated and infrared-reflecting windscreen
- "Discover Pro" navigation system including "Streaming & Internet" (4x20W app-controlled, wireless digital cockpit, operation with proximity sensor, dual tuner with phase shift, DAB vehicle menu, speed, volume adjustment, gesture control, 32GB SSD hard drive, 2D map display, sound control, triple TFT display with touchscreen, MP3 navigation for Europe, voice control, telephone contact address, telephone interface, "Comfort" with inductive charging, 2 USB iPod/iPhone traffic signs, "We Connect Plus" including "We Connect" destination guidance, dynamic RDS TMC tuner, pre-programmed mobile key, for vehicle, Smart.)
- Anti-theft alarm system (interior monitoring, backup horn and tow-away protection - illuminated vanity mirror in the sun visors, extendable sun visors)
- Area View including rear view camera (rear view) with Business Premium (displays the vehicle's surroundings in real time on the radio/navigation system display - supports when exiting from unclear exits or side streets, entering and exiting parking spaces, maneuvering with a trailer, or driving off-road)
- Rear side windows and rear window tinted

Brief expert findings

Documents submitted	At the time of the inspection, the registration certificate Part 2 (letter) was available, but the registration certificate Part 1 (certificate) was not. (Copy)
VIN comparison	The vehicle identification number (VIN) was read from the vehicle and its conformity with the submitted documents was verified during the inspection by the undersigned.
Inspection	The inspection conditions were sufficient for the assessment of the vehicle. Lifting equipment and a pit were available for examining the vehicle.
Test drive	A short maneuvering and shunting trip was carried out on the company premises.
Engine function test	An engine test run was performed.

Value reducing factors



No.	Component group	Description
1	Side panel - rear right side	Side panel (Mehrkosten möglich) - Scratch(es) - Smart repair
2	Front bumper	Protection strip - left side - Scratch(es) - Replace
3	Roof	Roof rail - left side - dent(s) - Smart repair
4	Rear bumper	Rear bumper - Scratched - Smart repair
5	Seat - front	Seat upholstery - left side - Abrasion - Smart repair
6	Sill - left side	Sill - Dent / paintcoat damage - Smart repair
7	Wheel / tyres	Tyre - rear left side (keine Notlaufeigenschaften) - Differs from the original configuration - Replace
8	Wheel / tyres	Tyre - front right side (keine Notlaufeigenschaften) - Differs from the original configuration - Replace
9	Front bumper	Front bumper - Scratched - Paint
10	Bonnet	Bonnet - Dent / paintcoat damage - Repair and paint

Wear and tear

No.	Component group	Description
1	Front bumper	Grille - Stone chips - No deduction
2	Roof	Roof rail - right side - dent(s) - No deduction
3	Vehicle glazing	Windscreen - Stone chips - No deduction

The vehicle shows signs of wear commensurate with its age and use.

Previous damages

No.	Previous damage	Extent of damage (Net)
1	Roof, Provided by user / customer, from 1 Nov 2024	737,39 €
2	Side right, Provided by user / customer, from 25 Jun 2023	847,02 €
3	Side - left, Provided by user / customer, from 17 Apr 2025	1.672,61 €
4	Front, Provided by user / customer, from 9 Mar 2023	6.701,77 €

Repainting

No.	Repainting
1	Mudguard - left side, Professionally carried out, Invoice of repair done Non-existent
2	Side panel - rear left side, Professionally carried out, Invoice of repair done Non-existent
3	Door - rear left side, Professionally carried out, Invoice of repair done Non-existent
4	Door - front left side, Professionally carried out, Invoice of repair done Non-existent

Paint coat thickness measurement

Mudguard - left side	451 µm	Side panel - rear left side	287 µm
Door - rear left side	356 µm	Door - front left side	400 µm

Order/Scope of order

The order was placed to prepare a sales report for the vehicle described. This includes the following:

- Description of core relevant information about the vehicle
- Documentation of equipment features
(Delivery by third-party service providers)
- Documentation of damage, defects, missing parts
- Documentation of previous damage, unrepaired previous damage, repainting
- a brief visual or functional inspection of the equipment details if possible.
(Functional tests of driver assistance systems are not included in the scope of services!)
- a photo documentation of the vehicle

Basis for the order

This product is based on the Alphabet Fuhrpark GmbH guidelines for vehicle returns and valuations. The expert makes the explicit findings in each individual case objectively within the framework of the specified standards based on his or her own expertise.

The vehicle inspection takes place in a disassembled state.

Damage or defects that can only be detected during disassembly/diagnosis work or through advanced knowledge remain within the scope of the prognosis risk. An extended risk exists for concealed defects caused by fraudulent deception and not identifiable by the expert.

Damage or defects resulting from normal use or wear and tear of the vehicle will be accepted according to the applicable standard.

There was no explicit identification or monetary consideration of the expected features within the product.

Features which in their nature and severity slightly exceed normal use but do not constitute unacceptable damage will be documented and identified under signs of use if necessary.

Damage or defects which, according to the underlying standard, can no longer be attributed to normal use or wear and tear are listed in the product under "Depreciating Factors".

Depending on the product specification, a monetary ID can be provided. If this takes place, the costs can be 100% d or pro rata depending on the vehicle's age and mileage.

Previous damages

According to available information previous damages were repaired at the vehicle. Traces of repairs, which allow conclusions about the area of repair, were not recognizable during the inspection.



Figure 1: Diagonal front (left)



Figure 2: Diagonal front (right)



Figure 3: Diagonal rear (left)



Figure 4: Diagonal rear (right)



Figure 5: Interior - front



Figure 6: Interior - rear



Figure 7: Instrument cluster



Figure 8: Instrument panel



Figure 9: Interior 360° view



Figure 10: Cargo area



Figure 11: VIN



Figure 12: Mounted tyres



Figure 14: Documents



Figure 16: Documents



Figure 18: Misc.



Figure 19: Misc.



Figure 20: Misc.

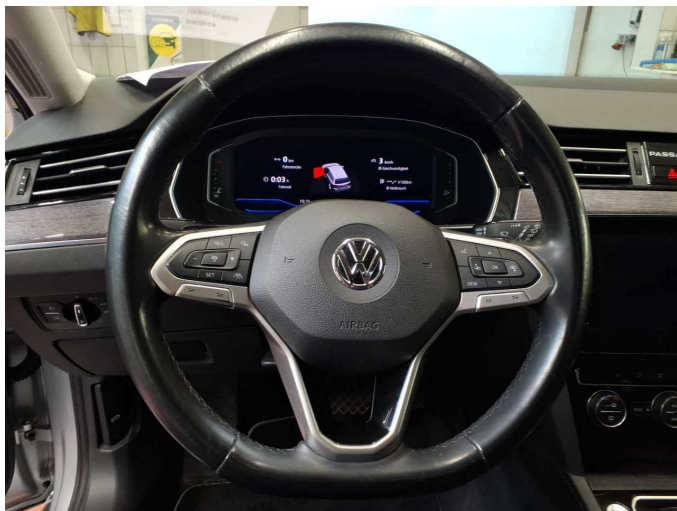


Figure 21: Misc.



Figure 22: Misc.



Figure 23: Misc.



Figure 24: Misc.



Figure 25: Misc.



Figure 26: Misc.



Figure 27: Misc.



Figure 28: Misc.



Figure 29: Misc.



Figure 30: Misc.



Damage 1: Side panel - rear right side: Side panel (Mehrkosten möglich)
- Scratch(es) - Smart repair



Damage 1: Side panel - rear right side: Side panel (Mehrkosten möglich)
- Scratch(es) - Smart repair



Damage 2: Front bumper: Protection strip - left side - Scratch(es) -
Replace



Damage 2: Front bumper: Protection strip - left side - Scratch(es) -
Replace



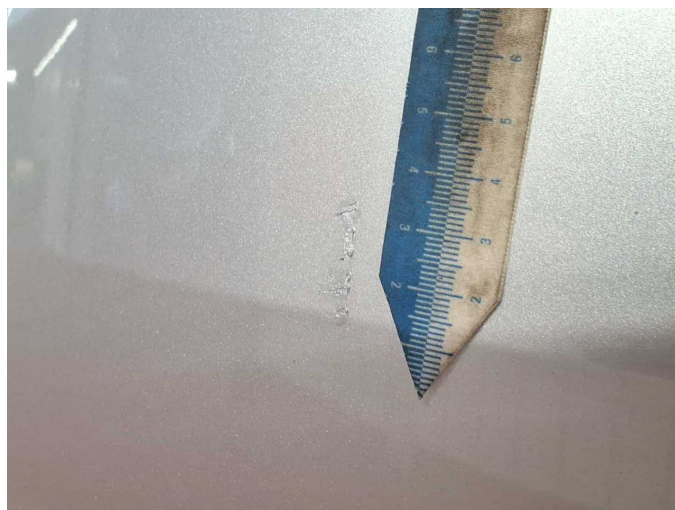
Damage 3: Roof: Roof rail - left side - dent(s) - Smart repair



Damage 3: Roof: Roof rail - left side - dent(s) - Smart repair



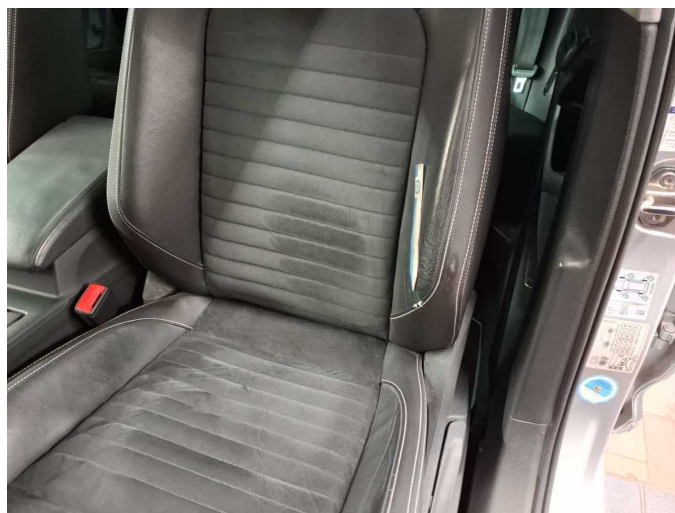
Damage 4: Rear bumper: Rear bumper - Scratched - Smart repair



Damage 4: Rear bumper: Rear bumper - Scratched - Smart repair



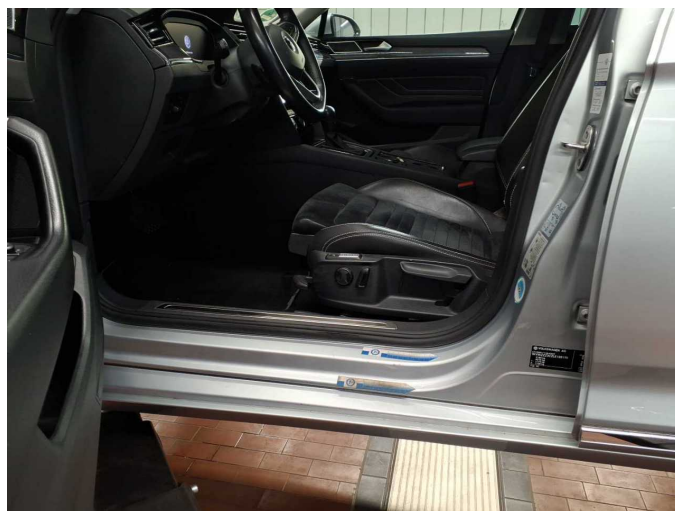
Damage 4: Rear bumper: Rear bumper - Scratched - Smart repair



Damage 5: Seat - front: Seat upholstery - left side - Abrasion - Smart repair



Damage 5: Seat - front: Seat upholstery - left side - Abrasion - Smart repair



Damage 6: Sill - left side: Sill - Dent / paintcoat damage - Smart repair



Damage 6: Sill - left side: Sill - Dent / paintcoat damage - Smart repair



Damage 6: Sill - left side: Sill - Dent / paintcoat damage - Smart repair



Damage 7: Wheel / tyres: Tyre - rear left side (keine Notlaufeigenschaften) - Differs from the original configuration - Replace



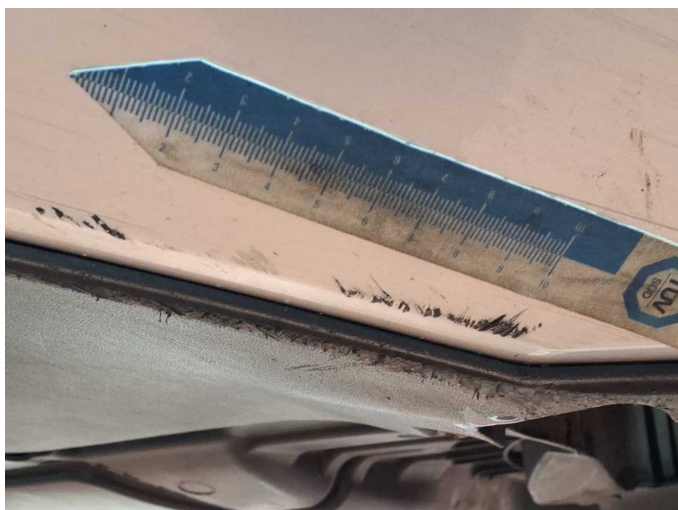
Damage 8: Wheel / tyres: Tyre - front right side (keine Notlaufeigenschaften) - Differs from the original configuration - Replace



Damage 9: Front bumper: Front bumper - Scratched - Paint



Damage 9: Front bumper: Front bumper - Scratched - Paint



Damage 9: Front bumper: Front bumper - Scratched - Paint



Damage 9: Front bumper: Front bumper - Scratched - Paint



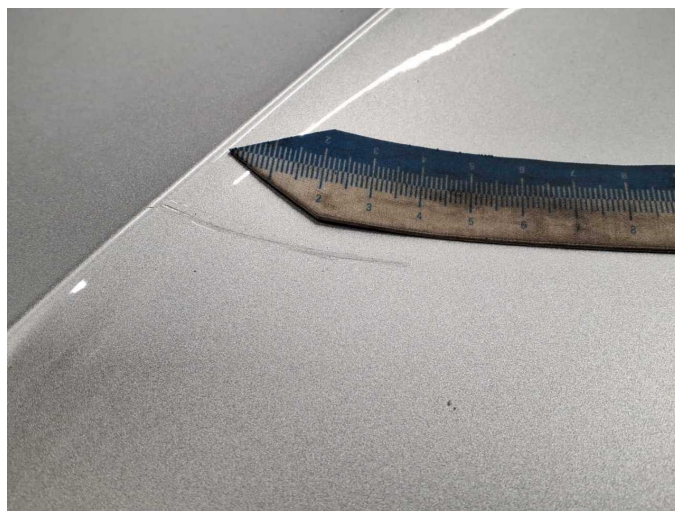
Damage 9: Front bumper: Front bumper - Scratched - Paint



Damage 9: Front bumper: Front bumper - Scratched - Paint



Damage 10: Bonnet: Bonnet - Dent / paintcoat damage - Repair and paint



Damage 10: Bonnet: Bonnet - Dent / paintcoat damage - Repair and paint



Damage 10: Bonnet: Bonnet - Dent / paintcoat damage - Repair and paint



Damage 10: Bonnet: Bonnet - Dent / paintcoat damage - Repair and paint



Damage 10: Bonnet: Bonnet - Dent / paintcoat damage - Repair and paint



Repainting 1: Mudguard - left side



Repainting 2: Side panel - rear left side



Repainting 3: Door - rear left side



Repainting 4: Door - front left side



Wartungshistorie

(gemäß Auftraggeber Informationen)

Fahrgestellnummer: WVVZZZ3CZLE128170

Hersteller / Modell: VOLKSWAGEN VW Passat Variant 2.0 TDI SCR DSG Elegance

Datum	KM-Stand	Beschreibung
14.02.2025	117.518	Ladeluftschlauch ern; Reparatur Sonstiges; Systemtest/Eigendiagnose
24.01.2025	114.649	Kraftstofffilter ern; Luftfiltereinsatz ern; Motoröl b. Wartung; Ölfilter ern; Regelwartungsdienst; Reparatur Sonstiges; Systemtest/Eigendiagnose; Wartung Sonstiges; Wasserpumpe ern
30.10.2024	107.934	Bremse Sonstiges; Bremsklötze vorne; Bremsscheiben vorne
17.01.2024	84.822	Bremse Sonstiges; Bremsflüssigkeit; Bremsflüssigkeit ern; Bremsklötze hinten; Bremsscheiben hinten; Motoröl b. Wartung; Ölfilter ern; Regelwartungsdienst; Wartung Sonstiges
18.10.2023	78.842	AU
10.01.2023	57.705	Regelwartungsdienst
14.10.2022	34.347	Bremsscheiben + Klötze v
29.01.2022	28.499	Motoröl b. Wartung; Regelwartungsdienst