



Expertise

Protocol number: 41727168
Order number / reference: 25220815
Inspection date: 26 Sept 2025

Manufacturer: Volkswagen

Model: Passat Variant 2.0 TSI OPF DSG Business

VIN: WVGZZZ3CZLE109126



Vehicle details	
Manufacturer / Type / Model / Equipment	
Volkswagen Passat Variant 2.0 TSI OPF DSG Business	
Vehicle Identification number	WVGZZZ3CZLE109126
Mileage (Read)	132,436 km
First registration	25 May 2020
Number of holders	1
Next periodical technical inspection	01/2026
(Report not on hand)	
Power / Engine displacement	140 kw / 1,984 ccm
Fuel type / Cylinder	Petrol / 4
Gearbox / Number of gears	Automatic / 7
Type of drive	Front drive
Type of vehicle	Station wagon
Colour / colour code	Oryxweiß Perlmuttereffekt
Doors / Seats	5 / 5
Upholstery type	Cloth / leather combination
Colour of upholstery	Black



Vehicle details

Maintenance booklet / proof	digital proof / complete	Next maintenance in	13,200 km
Last maintenance on / at	02/2025 at 115,638 km		
Key is / should be	2 / 2	FZG documents	ZB#2 (B) was available (copy), ZB#1 (S) was not available
		Letter No.	FQ971894
Previous damage / Accident	Detectable	Repainting	Detectable
Inspection conditions	sufficient	Lifting equipment / pit	yes
Test drive	Not performed	Engine function test	Performed
Manufacturer key number/ type code number	0603 / CJR 00020		
Emission standard	EURO6;WLTP;DG;PI/CI; M, N1 I	Fine dust sticker	
Permitted total weight	2,130 kg	Empty weight	

Tyres

Mounted tyres

#	Tyre size	Type of tyre	Manufacturer	Tread depth
1)	235/40 R19 96W	Summer tires (with run-flat tires) on Light alloy	Pirelli	6mm / 6mm
2)	235/40 R19 96W	Summer tires (with run-flat tires) on Light alloy	Pirelli	6mm / 6mm

Additional tyres

#	Tyre size	Type of tyre	Manufacturer	Tread depth
1)	215/60 R16 95H	Winter tires (with run-flat tires) on Light alloy	Pirelli	5mm / 5mm
2)	215/60 R16 95H	Winter tires (with run-flat tires) on Light alloy	Pirelli	7mm / 7mm

Legend: Tread depth information for tires on the left is in the first place, for tires on the right is in the second place on the axle in the direction of travel

Equipment

Standard equipment

- Airbag for driver and front passenger
- Anti-lock braking system (ABS)
- Automatic distance control ACC "stop & go", including speed limiter
- Hill start assist
- Chrome strips on the side windows
- tachometer
- Electronic parking brake including auto-hold function
- Electronic stabilization program and electromechanical brake booster
- Front windscreen in laminated safety glass, heat and sound insulating
- Transmission: 7-speed DSG
- ISOFIX anchorage points
- Instrument cluster with electronic speedometer, odometer, trip meter, tachometer
- LED fog lights and cornering lights
- LED headlights with daytime running lights
- Multifunction display "Premium" with multi-color display
- Mesh partition
- Emergency braking assistant "Front Assist" (for automatic distance control ACC up to 210 km/h)
- Package: Light and Vision Package "Plus"
- Radio "Composition"
- LED taillights
- Leather gearshift knob
- Power steering
- Seats: Lumbar supports in front
- Start-stop system
- Telephone interface
- First aid kit, warning triangle and safety vest
- Electronic immobilizer
- Airbag, head airbag system for front and rear passengers
- App Connect
- Exterior mirrors electrically adjustable and heated
- Cup holders (2) front
- Brake light, third
- Headlining in Mistral Grey
- Parking aid - warning signals for obstacles in the front and rear areas
- Automatic headlight switching
- Remote release for the trunk lid
- Pedestrian detection
- Luggage compartment floor can be raised
- Interior light front and rear with switch-off delay and dimming function
- Headrests (3) rear
- Front headrests
- LED taillights
- Headlight range adjustment
- Fatigue detection
- Non-smoking version
- Emergency call service
- Gasoline particulate filter
- Upholstery: "Weave" fabric
- Rain sensor
- Rear seat bench undivided, backrest asymmetrically divided and foldable, with center armrest
- Seat belts: three-point automatic seat belt
- Seats: Front seats height adjustable
- 12V socket on the rear center console
- Textile floor mats
- Warning sound and light for unfastened seat belts at the front and rear

Extra equipment

- "Discover Pro" navigation system including "Streaming & Internet" (4x20W app-controlled, wireless digital cockpit, operation with proximity sensor, dual tuner with phase shift, DAB vehicle menu, speed, volume adjustment, gesture control, 32GB SSD hard drive, 2D map display, sound control, triple TFT display with touchscreen, MP3 navigation for Europe, voice control, telephone contact address, telephone interface, "Comfort" with inductive charging, 2 USB iPod/iPhone traffic signs, "We Connect Plus" including "We Connect" destination guidance, dynamic RDS TMC tuner, pre-programmed mobile key, for vehicle, Smart.)
- Anti-theft alarm system (interior monitoring, backup horn and tow-away protection - illuminated vanity mirror in the sun visors, extendable sun visors)
- Fire extinguisher
- Folding trailer hitch (with electric release)
- Keyless start system with safe security
- Laminated safety glass, sound-insulating for front and side windows (including rear side windows and rear window tinted)
- Onboard tools and jack



- Airbags: Driver's knee airbag, side airbags, and rear seat belt pretensioners (driver and front passenger airbags with passenger airbag deactivation, including driver's knee airbag - three-point automatic seat belts with seat belt pretensioners for the outer rear seats - side airbags for the outer rear seats, including front side airbags and head airbag system)
- Chassis: Adaptive chassis control (DCC) including driving profile selection (allows the driver to choose between comfortable, sporty, or normal chassis settings at the touch of a button – continuously reacts to different driving situations and takes braking, steering, and acceleration into account – body lowered by approximately 10 mm)
- Finish: mother-of-pearl effect
- Head-up display
- Package: Luggage management package (fixing strap and lashing eyes that can be fixed on 4 rails - sliding luggage compartment floor - loading sill protection in stainless steel)
- Package: Winter (automatically heated windscreen washer nozzles - heated front seats)
- Panoramic tilt/slide roof (with rear panoramic roof)
- Proactive occupant protection system and lane change assistant "Side Assist" (Proactive occupant protection system in conjunction with "Front Assist" and "Side Assist" - lane change assistant "Side Assist" and rear traffic assistant)
- Radio accessories: "DYNAUDIO Confidence" sound system (10 + 1 speakers - 700 watts total power - 16-channel digital amplifier - subwoofer)
- Seats: ergoComfort seat with 14-way power adjustment, memory and massage on the driver's side. In conjunction with the Business Package (electrically folding exterior mirrors, dimming on the driver's side, ambient lighting and memory - electrically adjustable front lumbar supports, massage function on the driver's side - electrically adjustable front seats, ergoComfort seat on the driver's side, with memory function and easy entry)
- Steering wheel: Multifunction sports steering wheel in leather, heated, with shift paddles
- Wheels: Tire Mobility Set no longer available
- Wheels: Tire pressure monitoring system for road tires and winter tires (scope as tire pressure monitoring system for road tires, but winter tires with sensors for the tire pressure monitoring system)
- Wirelessly heated and infrared-reflecting windscreen
- Package: "Business Premium" package including navigation (from Business) (2 USB-C ports in the front, 1 USB-C charging socket in the rear, 230 V socket, App-Connect including wireless, Apple CarPlay, Android Auto, "Travel Assist" driving assistant and "Lane Assist" lane keeping assistant, Air Care Climatronic with 3-zone temperature control, allergen filter and rear controls, electric lumbar supports on the driver's side, massage function on the driver's side, "Rear View" reversing camera, heated windshield washer nozzles, Comfort telephone interface, inductive charging function, heated front seats)
- Package: Ambient Lighting "Plus" (multi-colored ambient lighting - LED entry/warning lights in all doors - interior lights with switch-off delay and dimming function, 2 LED reading lights each at the front and rear)
- Package: R-Line, Volkswagen R (roof in titanium black. "Dark Diamond Flag" decor for instrument and door trim. Entry sills front/rear in stainless steel. LED fog lights/corners with individual installation. Multi-function sports steering in leather with gearshift pedals in brushed stainless steel. R-Line rear in "R" styling in the body. Lower side trim in chrome. Center seat of the front and outer rear seats in "Carbon Flag" fabric, interior in "Vienna" leather. Sports comfort seat in front. Bumper and sill extensions in "R" styling, design trim in the rear bumper. Varian.)
- Roof rails, silver anodized
- Sun blinds on the rear door windows
- Tailgate with electric opening and closing, electric opening for luggage compartment cover (extendable and removable luggage compartment cover, with electric opening - tailgate with electric opening and closing)
- Travel Assist driving assistant including Emergency Assist in conjunction with the Business Premium package (Stop & Go Adaptive Cruise Control (ACC) with speed limiter; Travel Assist driving assistant, Lane Assist lane keeping assistant, and Emergency Assist; Front Assist emergency braking assistant (for Adaptive Cruise Control (ACC) up to 210 km/h); Park Assist parking steering assistant including parking aid; Side Assist lane change assistant and rear traffic exit assistant)
- Wheels: 4 light alloy wheels 8 J x 19 "Verona" Volkswagen R (painted in Sterling Silver - AirStop tires 235/40 R 19 - with individual installation - wheel locks with extended theft protection)
- Wheels: Winter wheels (additional), light alloy, "Aragon" 6.5 J x 16 (AirStop winter tires 215/60 R 16 H)



Brief expert findings

Documents submitted	At the time of the inspection, the registration certificate Part 2 (letter) was available, but the registration certificate Part 1 (certificate) was not. (Copy)
VIN comparison	The vehicle identification number (VIN) was read from the vehicle and its conformity with the submitted documents was verified during the inspection by the undersigned.
Inspection	The inspection conditions were sufficient for the assessment of the vehicle. Lifting equipment and a pit were available for examining the vehicle.
Test drive	No test drive/maneuvering was carried out during the inspection of the vehicle.
Engine function test	An engine test run was performed.

Value reducing factors

No.	Component group	Description
1	Instrument panel	Indicator light (Reifendruck) - on - Perform diagnosis
2	Boot lid / rear door	Boot lid (Zierleiste Links) - Missing - Loss in value
3	Rear bumper	Rear bumper - Scratch(es) - Smart repair
4	Boot lid / rear door	Rear spoiler - Scratched - Smart repair
5	Wheel / tyres	Alloy rim - rear left side - Scratched - Loss in value
6	Wheel / tyres	Alloy rim - rear right side - Scratch(es) - Loss in value
7	Wheel / tyres	Alloy rim - front left side - Scratch(es) - Loss in value
8	Front bumper	Front bumper (Chromleiste) - Damaged - Replace
9	Side panel - rear left side	Sill - Dent / paintcoat damage - Smart repair
10	Door - rear right side	Door - Scratch(es) - Smart repair
11	Wheel / tyres	Tyre - front right side (nicht fahrbereit) - Porous / cracked - Replace
12	Interior	Interior (Hundehaare) - Soiled - Conditioning
13	Front bumper	Front bumper - Scratch(es) - Paint
14	Bonnet	Bonnet - Stone chips - Paint
15	Wheel / tyres	Alloy rim - front right side - Scratched - Replace
16	Roof	Roof - Corrosion - Repair and paint

Wear and tear

No.	Component group	Description
1	Body	Body - Scratch(es) - No deduction
2	Side panel - rear left side	Side panel - dent(s) - No deduction
3	Door - rear left side	Door - dent(s) - No deduction

The vehicle shows signs of wear commensurate with its age and use.

Previous damages

No.	Previous damage	Extent of damage (Net)
1	Side - left, Underbody, Provided by user / customer, from 12 Jun 2025	793,99 €
2	Roof, Provided by user / customer, from 12 Jun 2025	1.028,36 €
3	Front, Provided by user / customer, from 31 Oct 2024	1.224,71 €
4	Rear, Provided by user / customer, from 26 Sept 2024	5.931,20 €
5	Rear, Provided by user / customer, from 13 Dec 2021	5.934,07 €

Repainting



No. Repainting

- 1 Boot lid / rear door, Bonnet, Side panel - rear left side, Side panel - rear right side, Door - rear right side, Professionally carried out, Invoice of repair done Non-existent

Paint coat thickness measurement

Boot lid / rear door	270 µm	Bonnet	153 µm
Side panel - rear left side	183 µm	Side panel - rear right side	273 µm
Door - rear right side	193 µm		

Order/Scope of order

The order was placed to prepare a sales report for the vehicle described. This includes the following:

- Description of core relevant information about the vehicle
- Documentation of equipment features
(*Delivery by third-party service providers*)
- Documentation of damage, defects, missing parts
- Documentation of previous damage, unrepaired previous damage, repainting
- a brief visual or functional inspection of the equipment details if possible.
(*Functional tests of driver assistance systems are not included in the scope of services!*)
- a photo documentation of the vehicle

Basis for the order

This product is based on the Alphabet Fuhrpark GmbH guidelines for vehicle returns and valuations. The expert makes the explicit findings in each individual case objectively within the framework of the specified standards based on his or her own expertise.

The vehicle inspection takes place in a disassembled state.

Damage or defects that can only be detected during disassembly/diagnosis work or through advanced knowledge remain within the scope of the prognosis risk. An extended risk exists for concealed defects caused by fraudulent deception and not identifiable by the expert.

Damage or defects resulting from normal use or wear and tear of the vehicle will be accepted according to the applicable standard.

There was no explicit identification or monetary consideration of the expected features within the product.

Features which in their nature and severity slightly exceed normal use but do not constitute unacceptable damage will be documented and identified under signs of use if necessary.

Damage or defects which, according to the underlying standard, can no longer be attributed to normal use or wear and tear are listed in the product under "Depreciating Factors".

Depending on the product specification, a monetary ID can be provided. If this takes place, the costs can be 100% d or pro rata depending on the vehicle's age and mileage.

Previous damages

According to available information previous damages were repaired at the vehicle. Traces of repairs, which allow conclusions about the area of repair, were not recognizable during the inspection.

Comments

Wartungshistorie gemäß Auftraggeber Informationen.



Figure 1: Diagonal front (left)



Figure 2: Diagonal front (right)



Figure 3: Diagonal rear (left)



Figure 4: Diagonal rear (right)



Figure 5: Interior - front



Figure 6: Interior - rear



Figure 7: Instrument cluster



Figure 8: Instrument panel



Figure 9: Interior 360° view



Figure 10: Cargo area

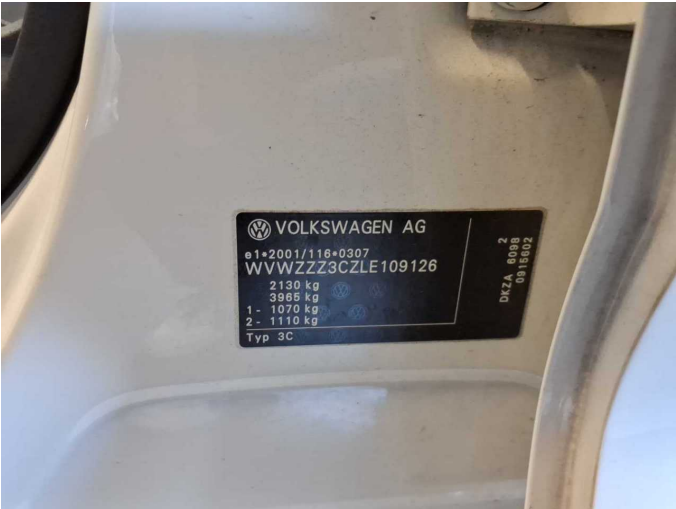


Figure 11: VIN



Figure 12: Mounted tyres

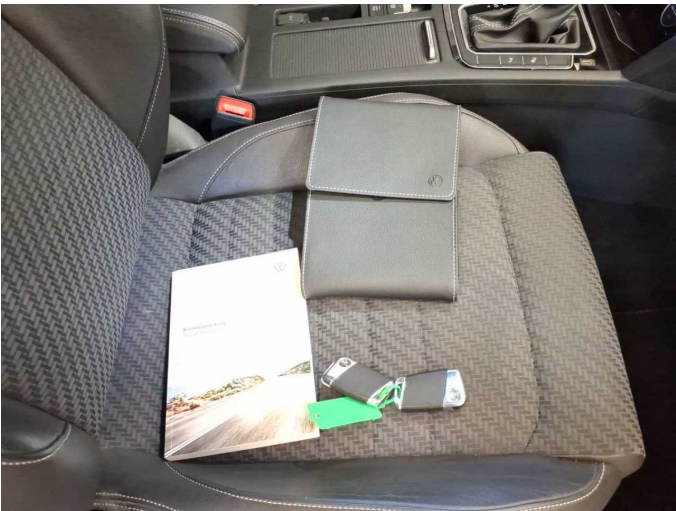


Figure 13: Documents



Figure 14: Additional tyres



Figure 15: Navigation



Figure 16: Misc.



Figure 17: Misc.

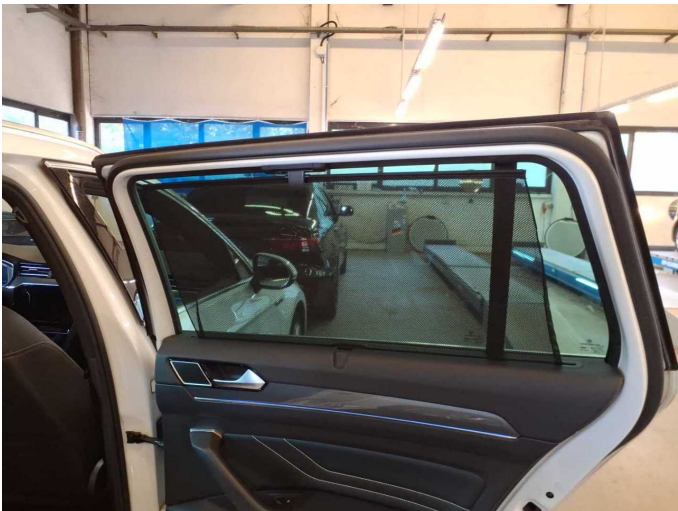


Figure 18: Misc.



Figure 19: Misc.



Figure 20: Misc.



Figure 21: Misc.



Figure 22: Misc.



Figure 23: Misc.



Figure 24: Misc.



Figure 25: Misc.



Figure 26: Misc.



Figure 27: Misc.



Figure 28: Misc.



Figure 29: Misc.

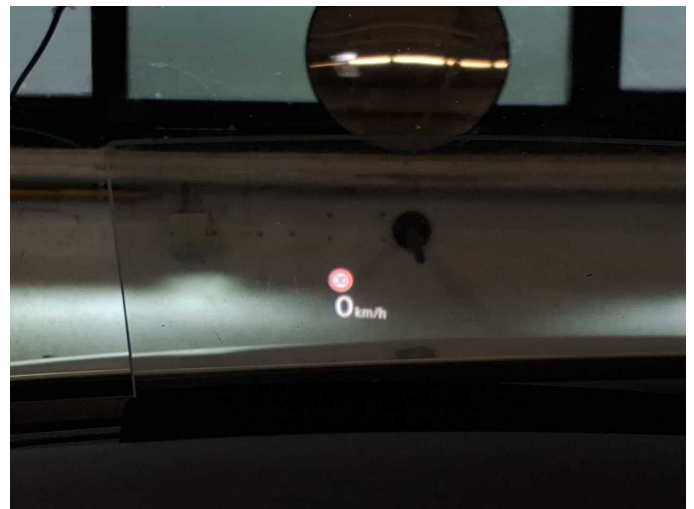


Figure 30: Misc.



Figure 31: Misc.



Figure 32: Misc.

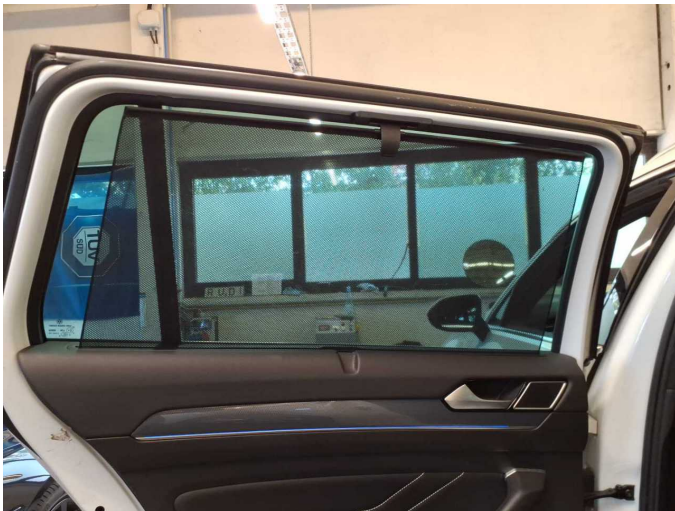
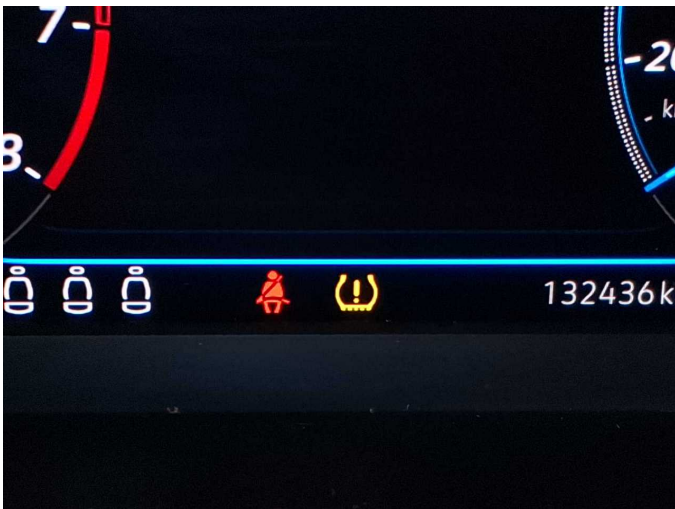


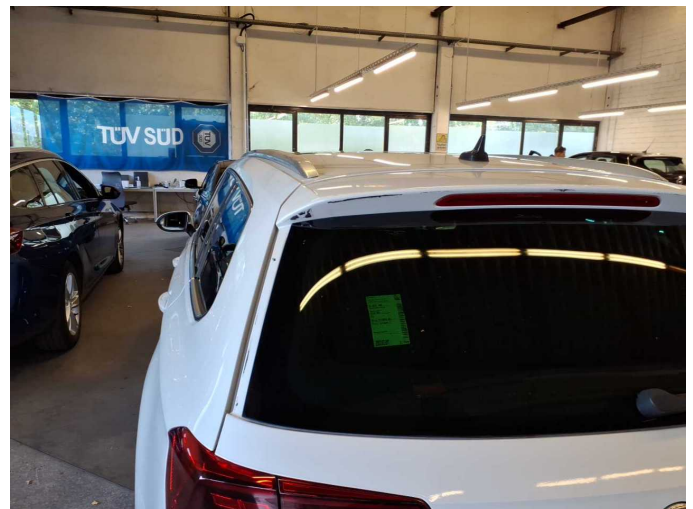
Figure 33: Misc.



Figure 34: Misc.



Damage 1: Instrument panel: Indicator light (Reifendruck) - on - Perform diagnosis



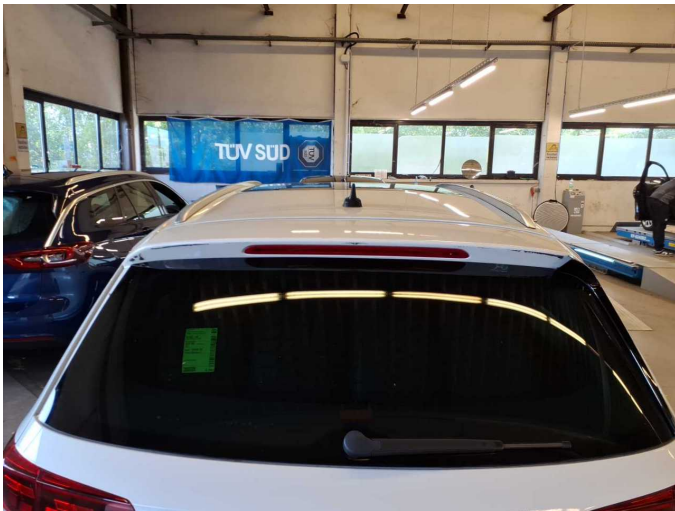
Damage 2: Boot lid / rear door: Boot lid (Zierleiste Links) - Missing - Loss in value



Damage 3: Rear bumper: Rear bumper - Scratch(es) - Smart repair



Damage 3: Rear bumper: Rear bumper - Scratch(es) - Smart repair



Damage 4: Boot lid / rear door: Rear spoiler - Scratched - Smart repair



Damage 5: Wheel / tyres: Alloy rim - rear left side - Scratched - Loss in value



Damage 5: Wheel / tyres: Alloy rim - rear left side - Scratched - Loss in value



Damage 5: Wheel / tyres: Alloy rim - rear left side - Scratched - Loss in value



Damage 5: Wheel / tyres: Alloy rim - rear left side - Scratched - Loss in value



Damage 5: Wheel / tyres: Alloy rim - rear left side - Scratched - Loss in value



Damage 6: Wheel / tyres: Alloy rim - rear right side - Scratch(es) - Loss in value



Damage 6: Wheel / tyres: Alloy rim - rear right side - Scratch(es) - Loss in value



Damage 6: Wheel / tyres: Alloy rim - rear right side - Scratch(es) - Loss in value



Damage 7: Wheel / tyres: Alloy rim - front left side - Scratch(es) - Loss in value



Damage 7: Wheel / tyres: Alloy rim - front left side - Scratch(es) - Loss in value



Damage 7: Wheel / tyres: Alloy rim - front left side - Scratch(es) - Loss in value



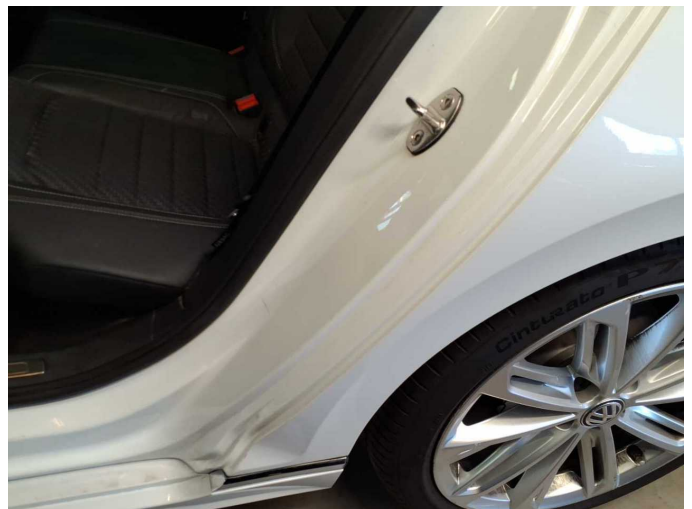
Damage 7: Wheel / tyres: Alloy rim - front left side - Scratch(es) - Loss in value



Damage 8: Front bumper: Front bumper (Chromleiste) - Damaged - Replace



Damage 8: Front bumper: Front bumper (Chromleiste) - Damaged - Replace



Damage 9: Side panel - rear left side: Sill - Dent / paintcoat damage - Smart repair



Damage 9: Side panel - rear left side: Sill - Dent / paintcoat damage - Smart repair



Damage 9: Side panel - rear left side: Sill - Dent / paintcoat damage - Smart repair



Damage 10: Door - rear right side: Door - Scratch(es) - Smart repair



Damage 10: Door - rear right side: Door - Scratch(es) - Smart repair



Damage 11: Wheel / tyres: Tyre - front right side (nicht fahrbereit) - Porous / cracked - Replace



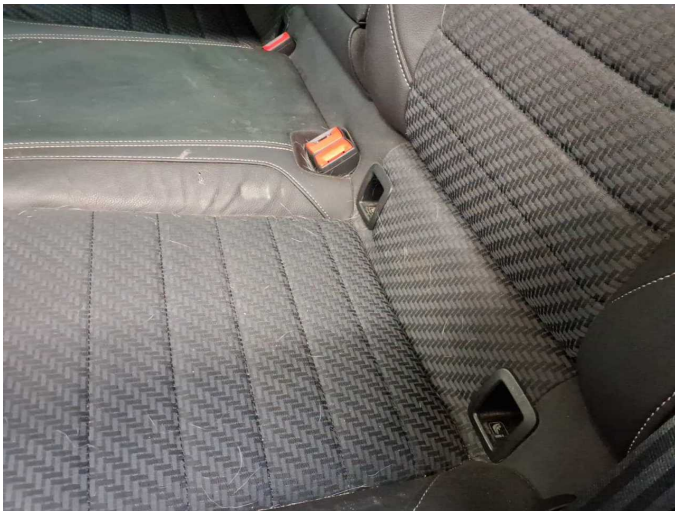
Damage 11: Wheel / tyres: Tyre - front right side (nicht fahrbereit) - Porous / cracked - Replace



Damage 11: Wheel / tyres: Tyre - front right side (nicht fahrbereit) - Porous / cracked - Replace



Damage 12: Interior: Interior (Hundehaare) - Soiled - Conditioning



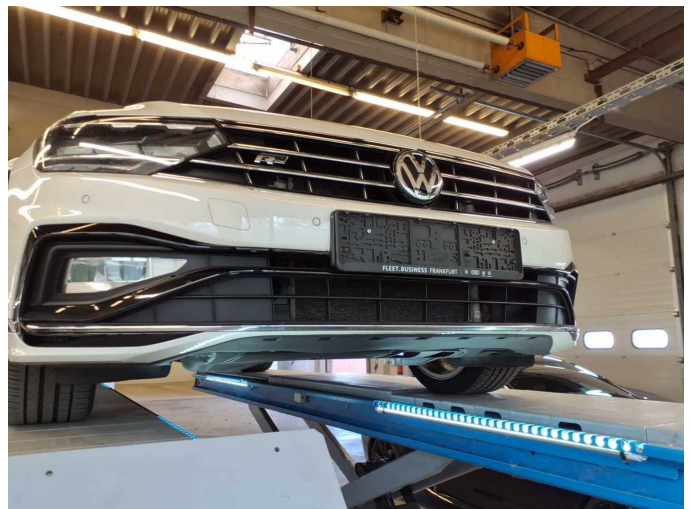
Damage 12: Interior: Interior (Hundehaare) - Soiled - Conditioning



Damage 12: Interior: Interior (Hundehaare) - Soiled - Conditioning



Damage 12: Interior: Interior (Hundehaare) - Soiled - Conditioning



Damage 13: Front bumper: Front bumper - Scratch(es) - Paint



Damage 13: Front bumper: Front bumper - Scratch(es) - Paint



Damage 13: Front bumper: Front bumper - Scratch(es) - Paint



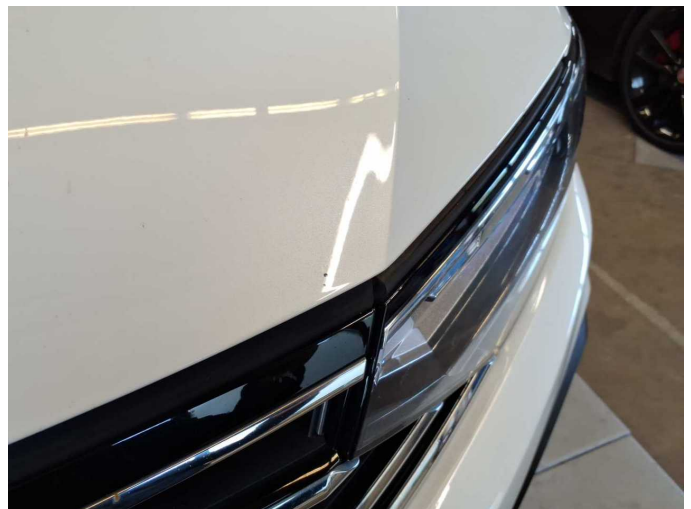
Damage 13: Front bumper: Front bumper - Scratch(es) - Paint



Damage 14: Bonnet: Bonnet - Stone chips - Paint



Damage 14: Bonnet: Bonnet - Stone chips - Paint



Damage 14: Bonnet: Bonnet - Stone chips - Paint



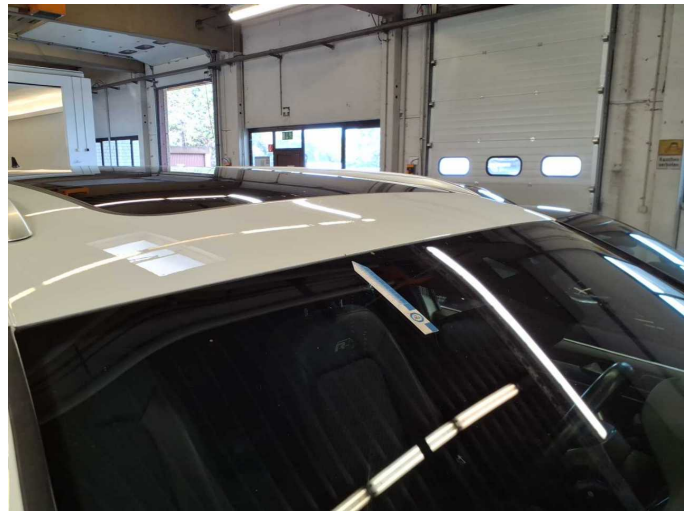
Damage 15: Wheel / tyres: Alloy rim - front right side - Scratched - Replace



Damage 15: Wheel / tyres: Alloy rim - front right side - Scratched - Replace



Damage 15: Wheel / tyres: Alloy rim - front right side - Scratched - Replace



Damage 16: Roof: Roof - Corrosion - Repair and paint



Damage 16: Roof: Roof - Corrosion - Repair and paint



Repainting 1: Boot lid / rear door, Bonnet, Side panel - rear left side, Side panel - rear right side, Door - rear right side



Repainting 1: Boot lid / rear door, Bonnet, Side panel - rear left side, Side panel - rear right side, Door - rear right side



Repainting 1: Boot lid / rear door, Bonnet, Side panel - rear left side, Side panel - rear right side, Door - rear right side



Repainting 1: Boot lid / rear door, Bonnet, Side panel - rear left side, Side panel - rear right side, Door - rear right side



Repainting 1: Boot lid / rear door, Bonnet, Side panel - rear left side, Side panel - rear right side, Door - rear right side



Repainting 1: Boot lid / rear door, Bonnet, Side panel - rear left side, Side panel - rear right side, Door - rear right side



Repainting 1: Boot lid / rear door, Bonnet, Side panel - rear left side, Side panel - rear right side, Door - rear right side



Repainting 1: Boot lid / rear door, Bonnet, Side panel - rear left side,
Side panel - rear right side, Door - rear right side



Repainting 1: Boot lid / rear door, Bonnet, Side panel - rear left side,
Side panel - rear right side, Door - rear right side



Repainting 1: Boot lid / rear door, Bonnet, Side panel - rear left side,
Side panel - rear right side, Door - rear right side



Wartungshistorie

(gemäß Auftraggeber Informationen)

Fahrgestellnummer: WVVZZZ3CZLE109126

Hersteller / Modell: VOLKSWAGEN VW Passat Variant 2.0 TSI OPF DSG Business

Datum	KM-Stand	Beschreibung
10.02.2025	115.638	Bremsscheiben + Klötze h; Bremsscheiben + Klötze v; Getriebeöl ern/ prüfen; Motoröl b. Wartung; Regelwartungsdienst
09.01.2024	85.510	Bremsflüssigkeit; Bremsflüssigkeit ern; HU + AU; Luftfiltereinsatz ern; Motoröl b. Wartung; Ölfilter ern; Regelwartungsdienst; Wartung Sonstiges; Zündkerzen ern
20.12.2022	56.967	Motoröl b. Wartung; Ölfilter ern; Regelwartungsdienst; Wartung Sonstiges
22.11.2022	52.500	Regelwartungsdienst; Wartung Sonstiges
16.11.2021	31.688	Motoröl b. Wartung; Ölfilter ern; Regelwartungsdienst; Wartung Sonstiges