



Expertise

Protocol number: 41229375
Order No. / Reference: 25114395
Inspection date: 26 Aug 2025

Manufacturer: Volkswagen

Model: Passat Variant 2.0 TDI SCR DSG Business

VIN: WVVZZZ3CZLE085021



Vehicle details	
Manufacturer / Type / Model / Equipment	
Volkswagen Passat Variant 2.0 TDI SCR DSG Business	
Vehicle Identification number	WVVZZZ3CZLE085021
Mileage (Read)	137,772 km
First registration	10 Mar 2020
Number of holders	2
Power / Engine displacement	110 kw / 1,968 ccm
Fuel type / Cylinder	Diesel / 4
Gearbox / Number of gears	Automatic / 7
Type of drive	Front drive
Type of vehicle	Station wagon
Colour / colour code	Pyritsilber Metallic (B7S)
Doors / Seats	5 / 5
Upholstery type	Cloth
Colour of upholstery	Black-Grey



Vehicle details

Maintenance booklet / proof	digital proof / complete	Next maintenance in	6,000 km
Last maintenance on / at	04/2025 at 128,558 km		
Key is / should be	2 / 2	FZG documents	ZB#2 (B) was available (copy), ZB#1 (S) was not available
		Letter No.	FQ856814
Previous damage / Accident	None detectable	Repainting	Detectable
Inspection conditions	sufficient	Lifting equipment / pit	yes
Test drive	Not performed	Engine function test	Performed
Manufacturer key number/ type code number	0603 / BQS 00420		
Emission standard	EURO6;WLTP;DG;PI/CI; M, N1 I	Fine dust sticker	
Permitted total weight	2,200 kg	Empty weight	

Tyres

Mounted tyres

#	Tyre size	Type of tyre	Manufacturer	Tread depth
1)	215/60 R16 95V	Summer tyres on Light alloy	Continental	5mm / 5mm
2)	215/60 R16 95V	Summer tyres on Light alloy	Continental	6mm / 6mm

Additional tyres

#	Tyre size	Type of tyre	Manufacturer	Tread depth
1)	205/60 R16 99H	Winter tyres on Light alloy	Continental	6mm / 6mm
2)	205/60 R16 99H	Winter tyres on Light alloy	Continental	7mm / 7mm

Replacement

Typ	Tyre size	Type of tyre	Manufacturer	Tread depth
	Tirefit	Expiration date 11/2023		

Legend: Tread depth information for tires on the left is in the first place, for tires on the right is in the second place on the axle in the direction of travel

Equipment

Standard equipment

- Proactive occupant protection system in conjunction with "Front Assist"
- Tire pressure monitoring indicator (passive)
- LED taillights
- Leather gearshift knob
- Keyless start system without safe lock
- Seats: Lumbar supports in front
- Start-stop system
- Telephone interface
- First aid kit, warning triangle and safety vest
- Electronic immobilizer
- Airbag for driver and front passenger
- Anti-lock braking system (ABS)
- Exterior mirrors electrically adjustable and heated
- Cup holders (2) front
- Brake light, third
- Headlining in Mistral Grey
- diesel particulate filter
- Parking aid - warning signals for obstacles in the front and rear areas
- Automatic headlight switching
- Remote release for the trunk lid
- Pedestrian detection
- Transmission: 7-speed DSG
- ISOFIX anchorage points
- Air conditioning
- Headrests (3) rear
- Front headrests
- LED fog lights and cornering lights
- LED headlights with daytime running lights
- Headlight range adjustment
- Multifunction display "Premium" with multi-color display
- Mesh partition
- Emergency braking assistant "Front Assist" (for automatic distance control ACC up to 210 km/h)
- Upholstery: "Weave" fabric
- Radio "Composition"
- Rain sensor
- Wheels: 4 light alloy wheels "Sepang" 6.5 J x 16
- Rear seat bench undivided, backrest asymmetrically divided and foldable, with center armrest
- Seat belts: three-point automatic seat belt
- Seats: Front seats height adjustable
- 12V socket on the rear center console
- Textile floor mats
- Warning sound and light for unfastened seat belts at the front and rear
- Airbag, head airbag system for front and rear passengers
- Automatic distance control ACC "stop & go", including speed limiter
- Hill start assist
- Chrome strips on the side windows
- Roof rails black
- tachometer
- Electronic parking brake including auto-hold function
- Electronic stabilization program and electromechanical brake booster
- Windscreen in heat-insulating glass
- Luggage compartment floor can be raised
- Interior light front and rear with switch-off delay and dimming function
- Instrument cluster with electronic speedometer, odometer, trip meter, tachometer
- Paint finish: Uni
- LED taillights
- Steering wheel: Multifunction steering wheel in leather, with shift paddles
- Fatigue detection
- Non-smoking version
- Emergency call service
- Package: Light and Vision Package "Plus"

Extra equipment

- Voice control
- App-Connect Wireless (Volkswagen offers three interfaces for connecting smartphones with numerous options: - Apple CarPlay - Android Auto from Google - MirrorLink)
- Removable luggage compartment protective mat (back of the rear seat backrest with black rubber covering)
- Paint finish: metallic
- "Comfort" telephone interface with inductive charging function (hands-free system)
- High beam control "Light Assist" (automatically switches on the high beam in the dark at speeds above 65 km/h - detects vehicles ahead and oncoming vehicles and automatically dims them before they are dazzled)



- Package: "Business Premium" package including navigation (from Business) (2 USB-C ports in the front, 1 USB-C charging socket in the rear, 230 V socket, App-Connect including wireless, Apple CarPlay, Android Auto, "Travel Assist" driving assistant and "Lane Assist" lane keeping assistant, Air Care Climatronic with 3-zone temperature control, allergen filter and rear controls, electric lumbar supports on the driver's side, massage function on the driver's side, "Rear View" reversing camera, heated windshield washer nozzles, Comfort telephone interface, inductive charging function, heated front seats)
- "Discover Media" navigation system including "Streaming & Internet" (4x20 watt user interface with proximity sensor, dual tuner with phase diversity, vehicle menu speed, volume adjustment, 2D map display, tone control, triple TFT display with touchscreen operation, "Discover Media" navigation system including "Streaming & Internet," MP3 radio, telephone contact address for navigation, telephone interface, 2 USB ports also for iPod/iPhone, traffic sign recognition, "VW Media Control," We Connect Plus, 3 years, including We Connect route guidance, dynamic RDS TMC tuner)

Brief expert findings

Documents submitted	At the time of the inspection, the registration certificate Part 2 (letter) was available, but the registration certificate Part 1 (certificate) was not. (Copy)
VIN comparison	The vehicle identification number (VIN) was read from the vehicle and its conformity with the submitted documents was verified during the inspection by the undersigned.
Inspection	The inspection conditions were sufficient for the assessment of the vehicle. Lifting equipment and a pit were available for examining the vehicle.
Test drive	No test drive/maneuvering was carried out during the inspection of the vehicle.
Engine function test	An engine test run was performed.

Value reducing factors

No.	Component group	Description
1	Equipment	Tirefit filler - Expired - Replace
2	Side panel - rear right side	Side panel - dent(s) - Smooth repair work
3	Bonnet	Bonnet (+ Steinschlag geht bis zur Grundierung) - dent(s) - Repair and paint

Wear and tear

No.	Component group	Description
1	Rear bumper	Rear bumper - Scratch(es) - No deduction

The vehicle shows signs of wear commensurate with its age and use.

Repainting

No.	Repainting
1	Bonnet, Professionally carried out, Invoice of repair done Non-existent
2	Side panel - rear left side, Professionally carried out, Invoice of repair done Non-existent
3	Door - rear right side, Professionally carried out, Invoice of repair done Non-existent
4	Door - front left side, Professionally carried out, Invoice of repair done Non-existent

Paint coat thickness measurement

Bonnet	210 µm	Side panel - rear left side	182 µm
Door - rear right side	204 µm	Door - front left side	163 µm



Order/Scope of order

The order was placed to prepare a sales report for the vehicle described. This includes the following:

- Description of core relevant information about the vehicle
- Documentation of equipment features
(Delivery by third-party service providers)
- Documentation of damage, defects, missing parts
- Documentation of previous damage, unrepaired previous damage, repainting
- a brief visual or functional inspection of the equipment details if possible.
(Functional tests of driver assistance systems are not included in the scope of services!)
- a photo documentation of the vehicle

Basis for the order

This product is based on the Alphabet Fuhrpark GmbH guidelines for vehicle returns and valuations. The expert makes the explicit findings in each individual case objectively within the framework of the specified standards based on his or her own expertise.

The vehicle inspection takes place in a disassembled state.

Damage or defects that can only be detected during disassembly/diagnosis work or through advanced knowledge remain within the scope of the prognosis risk. An extended risk exists for concealed defects caused by fraudulent deception and not identifiable by the expert.

Damage or defects resulting from normal use or wear and tear of the vehicle will be accepted according to the applicable standard.

There was no explicit identification or monetary consideration of the expected features within the product.

Features which in their nature and severity slightly exceed normal use but do not constitute unacceptable damage will be documented and identified under signs of use if necessary.

Damage or defects which, according to the underlying standard, can no longer be attributed to normal use or wear and tear are listed in the product under "Depreciating Factors".

Depending on the product specification, a monetary ID can be provided. If this takes place, the costs can be 100% d or pro rata depending on the vehicle's age and mileage.

Previous damages

Apparently, no repaired previous damage could be found on the vehicle.

Comments

- Winterradsatz ist kein Bestandteil des Auslieferungsumfangs



Figure 1: Diagonal front (left)



Figure 2: Diagonal front (right)



Figure 3: Diagonal rear (left)



Figure 4: Diagonal rear (right)



Figure 5: Interior - front



Figure 6: Interior - rear



Figure 7: Instrument cluster



Figure 8: Instrument panel



Figure 9: interior 360° view ([Online link](#))



Figure 10: Cargo area

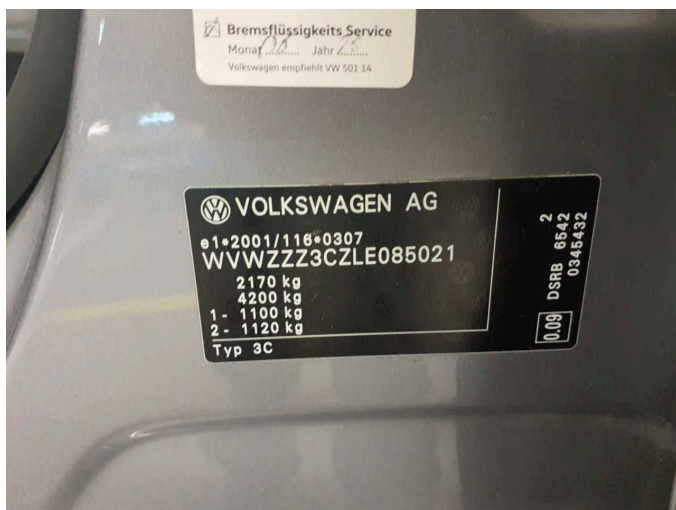


Figure 11: VIN



Figure 12: Mounted tyres

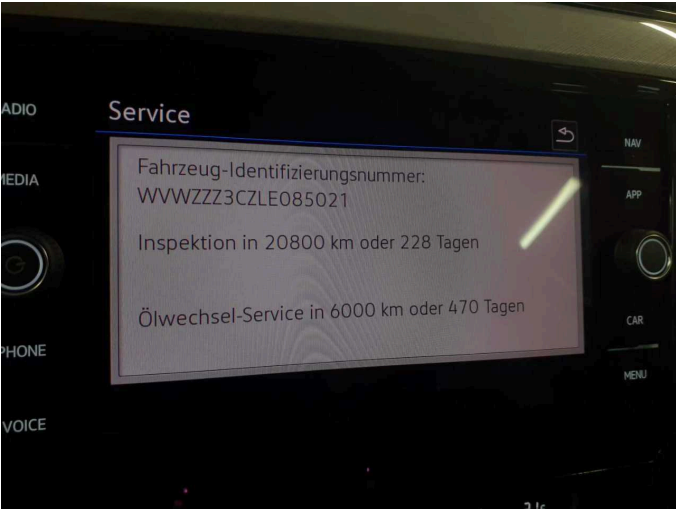


Figure 13: Documents



Figure 14: Documents

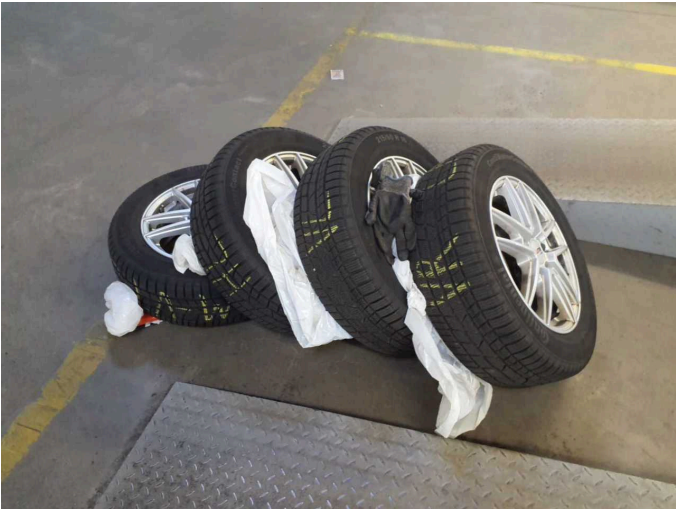


Figure 15: Additional tyres



Figure 16: Navigation



Figure 17: Misc.



Figure 18: Misc.



Figure 19: Misc.

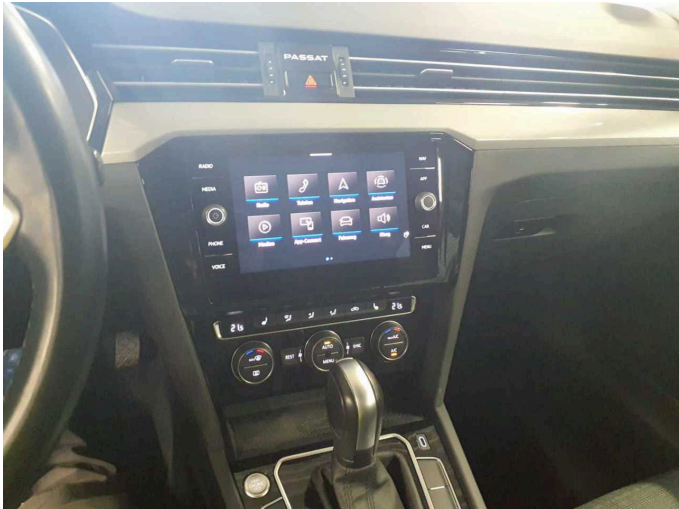


Figure 20: Misc.



Figure 21: Misc.



Figure 22: Misc.



Figure 23: Misc.

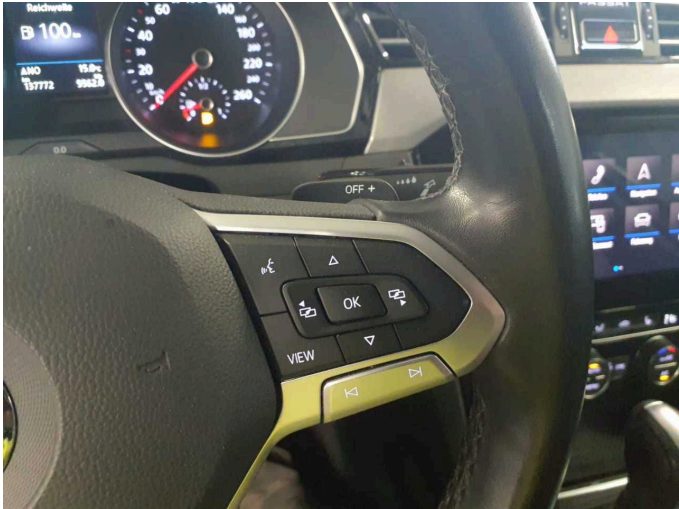


Figure 24: Misc.

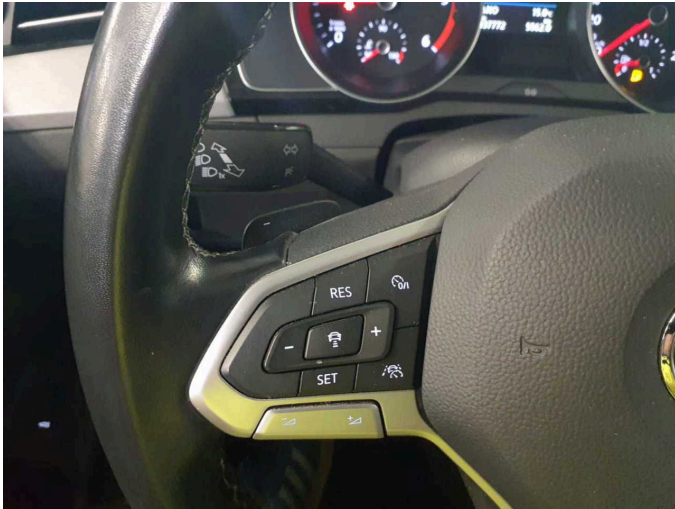


Figure 25: Misc.



Figure 26: Misc.



Figure 27: Misc.



Figure 28: Misc.



Figure 29: Misc.



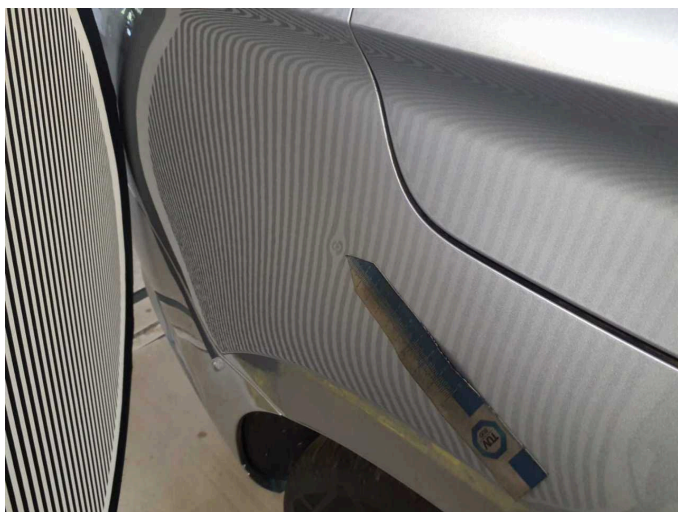
Damage 1: Equipment: Tirefit filler - Expired - Replace



Damage 2: Side panel - rear right side: Side panel - dent(s) - Smooth repair work



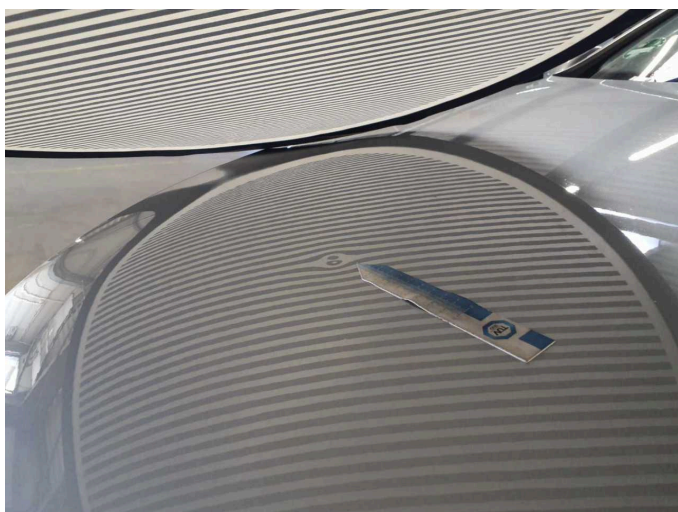
Damage 2: Side panel - rear right side: Side panel - dent(s) - Smooth repair work



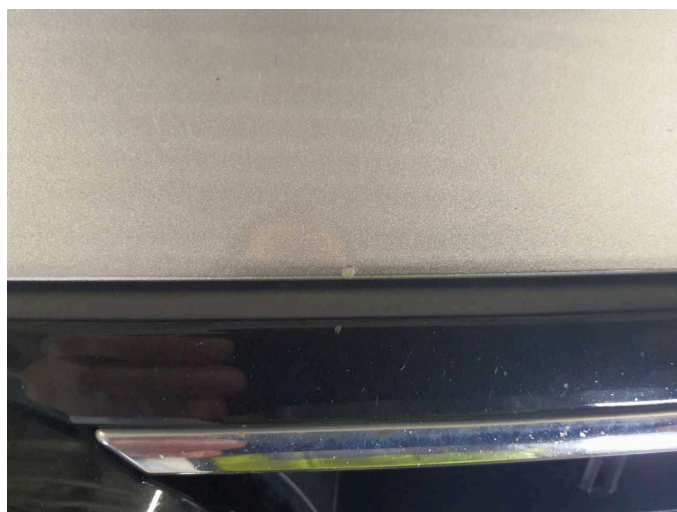
Damage 2: Side panel - rear right side: Side panel - dent(s) - Smooth repair work



Damage 3: Bonnet: Bonnet (+ Steinschlag geht bis zur Grundierung) - dent(s) - Repair and paint



Damage 3: Bonnet: Bonnet (+ Steinschlag geht bis zur Grundierung) - dent(s) - Repair and paint



Damage 3: Bonnet: Bonnet (+ Steinschlag geht bis zur Grundierung) - dent(s) - Repair and paint



Damage 3: Bonnet: Bonnet (+ Steinschlag geht bis zur Grundierung) - dent(s) - Repair and paint



Wear and tear 1: Rear bumper: Rear bumper - Scratch(es) - No deduction



Wear and tear 1: Rear bumper: Rear bumper - Scratch(es) - No deduction



Wear and tear 1: Rear bumper: Rear bumper - Scratch(es) - No deduction



Wear and tear 1: Rear bumper: Rear bumper - Scratch(es) - No deduction



Repainting 1: Bonnet



Repainting 1: Bonnet



Repainting 2: Side panel - rear left side



Repainting 2: Side panel - rear left side



Repainting 3: Door - rear right side



Repainting 3: Door - rear right side



Repainting 4: Door - front left side



Repainting 4: Door - front left side



Wartungshistorie

(gemäß Auftraggeber Informationen)

Fahrgestellnummer: WVVZZZ3CZLE085021

Hersteller / Modell: VOLKSWAGEN VW Passat Variant 2.0 TDI SCR DSG Business

Datum	KM-Stand	Beschreibung
11.04.2025	128.558	AU; Bremsflüssigkeit; Bremsflüssigkeit ern; Getriebeöl ern/prüfen; Regelwartungsdienst; Wartung Sonstiges
09.12.2024	113.750	Motoröl b. Wartung; Ölfilter ern; Ölwechsel; Wartung Sonstiges
28.08.2024	98.258	Kraftstofffilter ern; Luftfiltereinsatz ern; Regelwartungsdienst; Systemtest/ Eigendiagnose; Wartung Sonstiges
19.03.2024	81.432	Motoröl b. Wartung; Ölfilter ern; Ölwechsel; Wartung Sonstiges
27.11.2023	66.978	Regelwartungsdienst
16.06.2023	47.670	Bremsflüssigkeit ern; Motoröl b. Wartung; Ölwechsel
02.05.2023	42.365	AU; Bremsscheiben + Klötze h; Bremsscheiben + Klötze v
09.01.2023	32.426	Regelwartungsdienst
31.01.2022	16.950	Motoröl b. Wartung; Regelwartungsdienst