



Expertise

Protocol number: 41180643
Order No. / Reference: 24970954
Inspection date: 22 Aug 2025

Manufacturer: Volkswagen

Model: Passat Variant 2.0 TDI SCR DSG 4Motion Elegance

VIN: WVGZZZ3CZLE024774



Vehicle details	
Manufacturer / Type / Model / Equipment	
Volkswagen Passat Variant 2.0 TDI SCR DSG 4Motion Elegance	
Vehicle Identification number	WVGZZZ3CZLE024774
Mileage (Read)	170,236 km
First registration	17 Jan 2020
Number of holders	1
Power / Engine displacement	140 kw / 1,968 ccm
Fuel type / Cylinder	Diesel / 4
Gearbox / Number of gears	Automatic / 7
Type of drive	All-wheel drive
Type of vehicle	Station wagon
Colour / colour code	Oryxweiß Perlmutteffekt
Doors / Seats	5 / 5
Upholstery type	Cloth / leather combination
Colour of upholstery	Black



Vehicle details			
Maintenance booklet / proof	digital proof / complete	Next maintenance in	10,100 km
Last maintenance on / at	01/2025 at 150,267 km		
Key is / should be	2 / 2	FZG documents	ZB#2 (B) was available (copy), ZB#1 (S) was not available
		Letter No.	FQ772164
Previous damage / Accident	None detectable	Repainting	None detectable
Inspection conditions	sufficient	Lifting equipment / pit	yes
Test drive	Not performed	Engine function test	Performed
Manufacturer key number/ type code number	0603 / BRC 00180		
Emission standard	EURO6;WLTP;DG;PI/CI; M, N1 I		
Permitted total weight	2,270 kg	Fine dust sticker	
		Empty weight	

Tyres				
Mounted tyres				
#	Tyre size	Type of tyre	Manufacturer	Tread depth
1)	215/55 R17 94W	Summer tires (with run-flat tires) on Light alloy	Pirelli	4mm / 4mm
2)	215/55 R17 94W	Summer tires (with run-flat tires) on Light alloy	Pirelli	5mm / 5mm
Additional tyres				
#	Tyre size	Type of tyre	Manufacturer	Tread depth
1)	215/55 R17 94H	Winter tires (with run-flat tires) on Light alloy	Pirelli	5mm / 5mm
2)	215/55 R17 94H	Winter tires (with run-flat tires) on Light alloy	Pirelli	5mm / 5mm
Legend: Tread depth information for tires on the left is in the first place, for tires on the right is in the second place on the axle in the direction of travel				

Equipment

Standard equipment

- | | |
|---|--|
| <ul style="list-style-type: none"> • Airbag for driver and front passenger • Anti-lock braking system (ABS) • Exterior mirrors electrically adjustable and heated • Exterior mirrors with ambient lighting and passenger mirror lowering • Brake light, third • Headlining in Mistral Grey • Decorative inlays in brushed aluminum • tachometer • Electronic parking brake including auto-hold function • Electronic stabilization program and electromechanical brake booster • Windscreen in heat-insulating glass • Luggage compartment floor can be raised • Interior light front and rear with switch-off delay and dimming function • ISOFIX anchorage points • Air Care Climatronic air conditioning system with 3-zone temperature control and allergen filter • Headrests (3) rear • Steering wheel: Multifunction steering wheel in leather, with shift paddles • Multifunction display "Premium" with multi-color display • Mesh partition • Emergency call service • Package: Winter • Proactive occupant protection system in conjunction with "Front Assist" • Tire pressure monitoring indicator (passive) • LED taillights • Rear seat bench undivided, backrest asymmetrically divided and foldable, with center armrest • Seat belts: three-point automatic seat belt • Seats: Front seats height adjustable • 12V socket on the rear center console • Textile floor mats • Warning sound and light for unfastened seat belts at the front and rear | <ul style="list-style-type: none"> • Airbag, head airbag system for front and rear passengers • Automatic distance control ACC "stop & go", including speed limiter • Cup holders (2) front • Hill start assist • Chrome strips on the side windows • Roof rails, silver anodized • diesel particulate filter • Parking aid - warning signals for obstacles in the front and rear areas • Automatic headlight switching • Remote release for the trunk lid • Pedestrian detection • Transmission: 7-speed DSG • Interior mirror automatically dimming • IQ.LIGHT - LED matrix headlights, including LED taillights dark red • Instrument cluster with electronic speedometer, odometer, trip meter, tachometer • Front headrests • Headlight range adjustment • Make-up mirrors in the sun visors • Fatigue detection • Non-smoking version • Package: "Design and Comfort" • Upholstery: Leather "Vienna" • Radio "Composition" • Rain sensor • Wheels: 4 light alloy wheels "Istanbul" (5-twin-spoke design) 7 J x 17 • Leather gearshift knob • Keyless start system without safe lock • Seats: Lumbar supports in front • Start-stop system • Telephone interface • First aid kit, warning triangle and safety vest • Electronic immobilizer |
|---|--|

Extra equipment

- | | |
|--|--|
| <ul style="list-style-type: none"> • Airbags: Driver's knee airbag, side airbags, and rear seat belt pretensioners (driver and front passenger airbags with passenger airbag deactivation, including driver's knee airbag - three-point automatic seat belts with seat belt pretensioners for the outer rear seats - side airbags for the outer rear seats, including front side airbags and head airbag system) • Head-up display | <ul style="list-style-type: none"> • Folding trailer hitch (with electric release) • Travel Assist driving assistant including Emergency Assist in conjunction with the Business Premium package (Stop & Go Adaptive Cruise Control (ACC) with speed limiter; Travel Assist driving assistant, Lane Assist lane keeping assistant, and Emergency Assist; Front Assist emergency braking assistant (for Adaptive Cruise Control (ACC) up to 210 km/h); Park Assist parking steering assistant including parking aid; Side Assist lane change assistant and rear traffic exit assistant) • Finish: mother-of-pearl effect |
|--|--|



- Tailgate with electric opening and closing, electric opening for luggage compartment cover (extendable and removable luggage compartment cover, with electric opening - tailgate with electric opening and closing)
- "Discover Pro" navigation system including "Streaming & Internet" (4x20W app-controlled, wireless digital cockpit, operation with proximity sensor, dual tuner with phase shift, DAB vehicle menu, speed, volume adjustment, gesture control, 32GB SSD hard drive, 2D map display, sound control, triple TFT display with touchscreen, MP3 navigation for Europe, voice control, telephone contact address, telephone interface, "Comfort" with inductive charging, 2 USB iPod/iPhone traffic signs, "We Connect Plus" including "We Connect" destination guidance, dynamic RDS TMC tuner, pre-programmed mobile key, for vehicle, Smart.)
- Package: Ambient lighting (ambient lighting, 1-color - entry/warning lights in LED technology in all doors)
- Radio accessories: "DYNAUDIO Confidence" sound system (10 + 1 speakers - 700 watts total power - 16-channel digital amplifier - subwoofer)
- Wheels: 4 "Nivelles" 7 J x 17 alloy wheels (black, high-sheen finish - 215/55 R 17 AirStop tires, low rolling resistance - wheel locks with enhanced anti-theft protection - rear disc brakes, blue brake calipers (only for GTE))
- Preparation for "We Connect Fleet", duration 2 years
- Steering wheel: Multifunction steering wheel in leather, heated, with shift paddles
- Package: "Business Premium" package including navigation (230V socket, App-Connect Wireless "Travel Assist" driving assistant and "Lane Assist" lane keeping assistant, Air Care Climatronic with 3-zone temperature control, allergen filter and rear controls, front lumbar supports, electrically adjustable on the driver's side, massage function on the driver's side, "Rear View" reversing camera, automatically heated front windshield washer nozzles, "Comfort" telephone interface with inductive charging function, USB-C interface and USB charging socket, heated front seats)
- Proactive occupant protection system and lane change assistant "Side Assist" (Proactive occupant protection system in conjunction with "Front Assist" and "Side Assist" - lane change assistant "Side Assist" and rear traffic assistant)
- Wheels: Tire Mobility Set no longer available
- Voice control
- Laminated safety glass, sound-insulating for front and side windows (including rear side windows and rear window tinted)

Brief expert findings

Documents submitted	At the time of the inspection, the registration certificate Part 2 (letter) was available, but the registration certificate Part 1 (certificate) was not. (Copy)
VIN comparison	The vehicle identification number (VIN) was read from the vehicle and its conformity with the submitted documents was verified during the inspection by the undersigned.
Inspection	The inspection conditions were sufficient for the assessment of the vehicle. Lifting equipment and a pit were available for examining the vehicle.
Test drive	No test drive/maneuvering was carried out during the inspection of the vehicle.
Engine function test	An engine test run was performed.

Value reducing factors

No.	Component group	Description
1	Rear bumper	Rear bumper - Scratch(es) - Smart repair
2	Front bumper	Front bumper - Scratched - Paint
3	Bonnet	Bonnet - Stone chips - Paint
4	Vehicle glazing	Windscreen with lane departure assistant - Stone chips - Replace



Order/Scope of order

The order was placed to prepare a sales report for the vehicle described. This includes the following:

- Description of core relevant information about the vehicle
- Documentation of equipment features
(Delivery by third-party service providers)
- Documentation of damage, defects, missing parts
- Documentation of previous damage, unrepaired previous damage, repainting
- a brief visual or functional inspection of the equipment details if possible.
(Functional tests of driver assistance systems are not included in the scope of services!)
- a photo documentation of the vehicle

Basis for the order

This product is based on the Alphabet Fuhrpark GmbH guidelines for vehicle returns and valuations. The expert makes the explicit findings in each individual case objectively within the framework of the specified standards based on his or her own expertise.

The vehicle inspection takes place in a disassembled state.

Damage or defects that can only be detected during disassembly/diagnosis work or through advanced knowledge remain within the scope of the prognosis risk. An extended risk exists for concealed defects caused by fraudulent deception and not identifiable by the expert.

Damage or defects resulting from normal use or wear and tear of the vehicle will be accepted according to the applicable standard.

There was no explicit identification or monetary consideration of the expected features within the product.

Features which in their nature and severity slightly exceed normal use but do not constitute unacceptable damage will be documented and identified under signs of use if necessary.

Damage or defects which, according to the underlying standard, can no longer be attributed to normal use or wear and tear are listed in the product under "Depreciating Factors".

Depending on the product specification, a monetary ID can be provided. If this takes place, the costs can be 100% d or pro rata depending on the vehicle's age and mileage.

Previous damages

Apparently, no repaired previous damage could be found on the vehicle.

Comments

- Winterradsatz ist kein Bestandteil des Auslieferungsumfangs.



Figure 1: Diagonal front (left)



Figure 2: Diagonal front (right)



Figure 3: Diagonal rear (left)



Figure 4: Diagonal rear (right)



Figure 5: Interior - front



Figure 6: Interior - rear



Figure 7: Instrument cluster



Figure 8: Instrument panel



Figure 9: interior 360° view ([Online link](#))



Figure 10: Cargo area



Figure 11: VIN



Figure 12: Mounted tyres

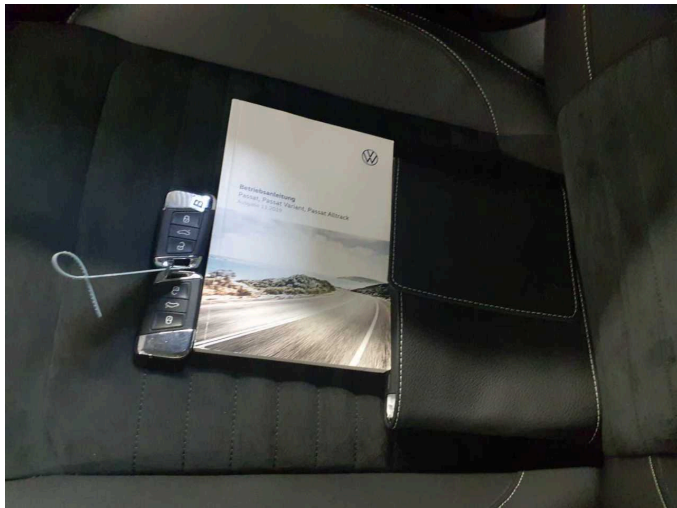


Figure 13: Documents



Figure 14: Additional tyres



Figure 15: Navigation



Figure 16: Misc.



Figure 17: Misc.

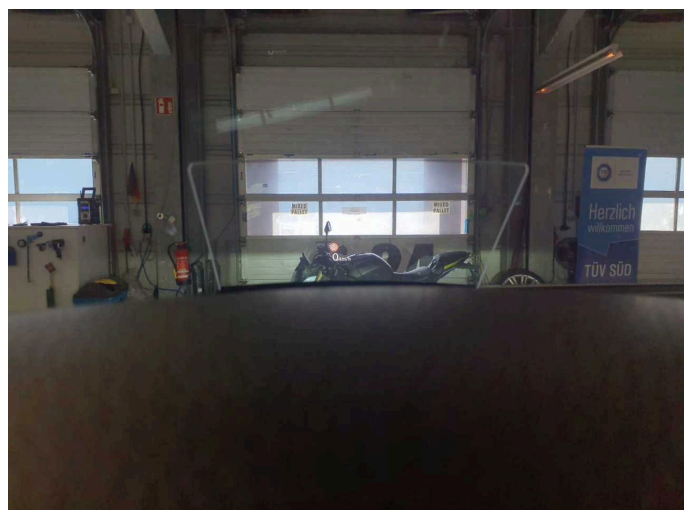


Figure 18: Misc.



Figure 19: Misc.



Figure 20: Misc.



Figure 21: Misc.



Figure 22: Misc.



Figure 23: Misc.



Figure 24: Misc.

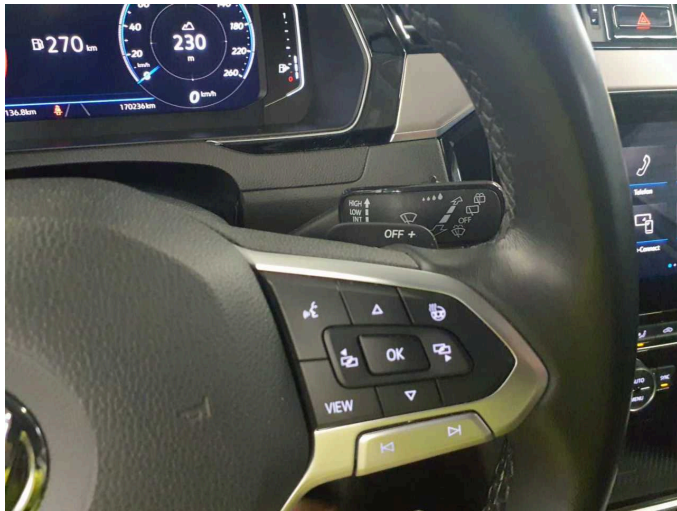


Figure 25: Misc.



Figure 26: Misc.

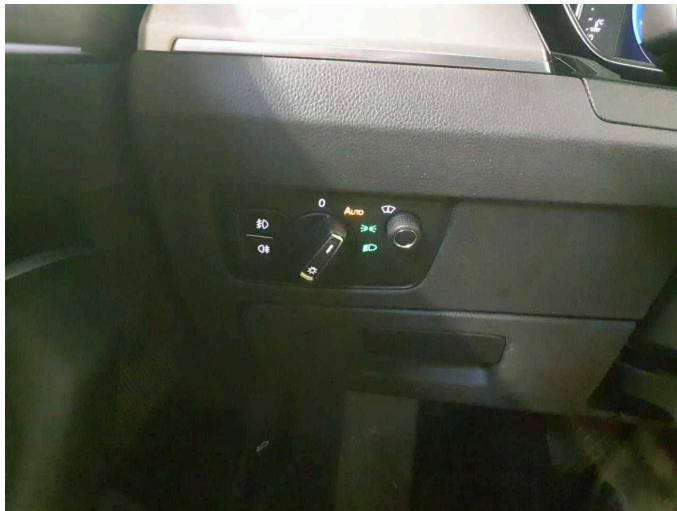


Figure 27: Misc.



Figure 28: Misc.



Figure 29: Misc.

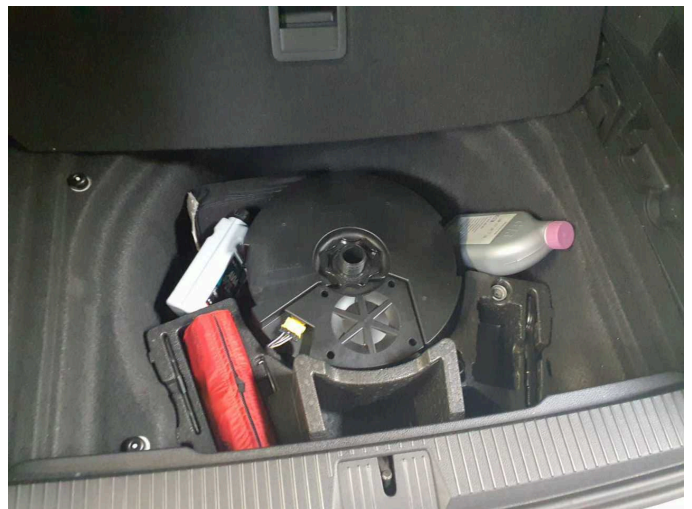


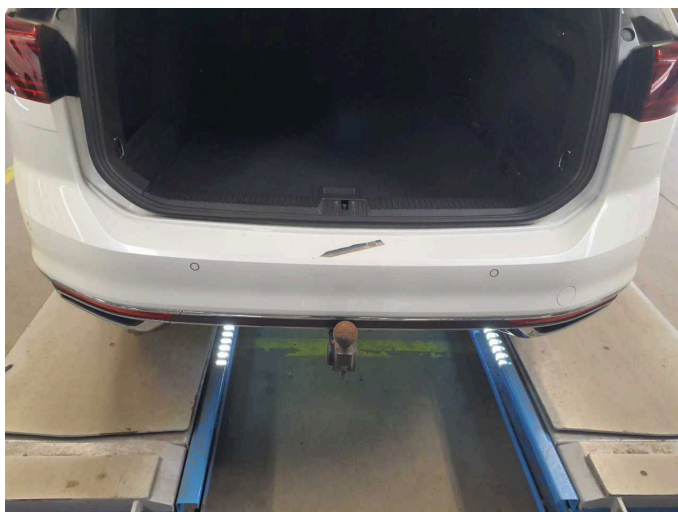
Figure 30: Misc.



Figure 31: Misc.



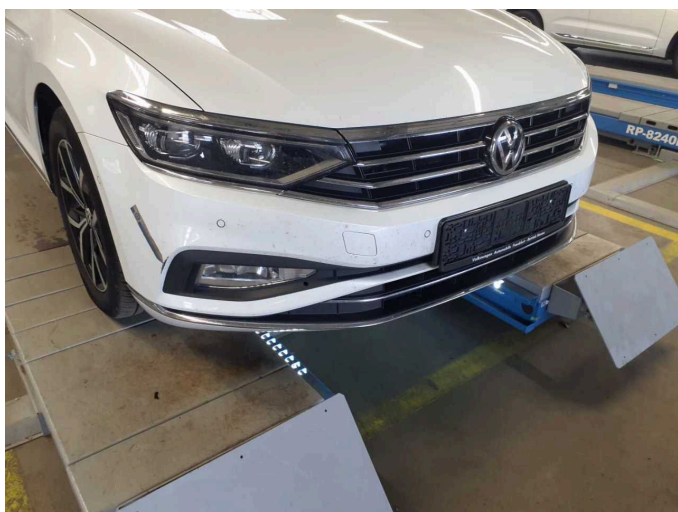
Figure 32: Misc.



Damage 1: Rear bumper: Rear bumper - Scratch(es) - Smart repair



Damage 1: Rear bumper: Rear bumper - Scratch(es) - Smart repair



Damage 2: Front bumper: Front bumper - Scratched - Paint



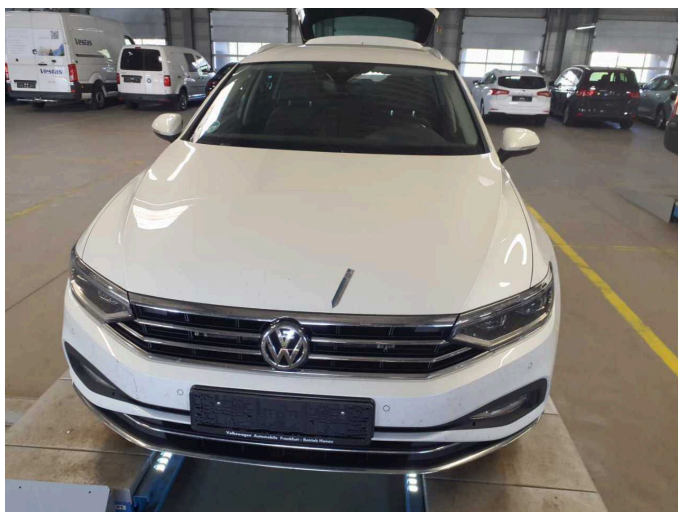
Damage 2: Front bumper: Front bumper - Scratched - Paint



Damage 2: Front bumper: Front bumper - Scratched - Paint



Damage 2: Front bumper: Front bumper - Scratched - Paint



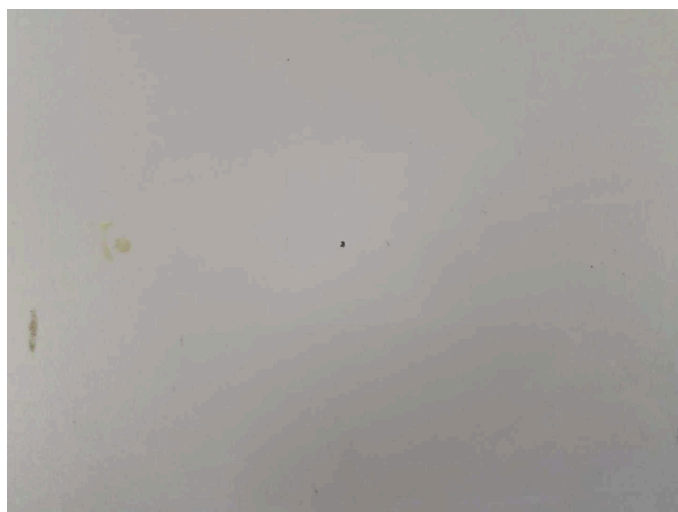
Damage 3: Bonnet: Bonnet - Stone chips - Paint



Damage 3: Bonnet: Bonnet - Stone chips - Paint



Damage 3: Bonnet: Bonnet - Stone chips - Paint



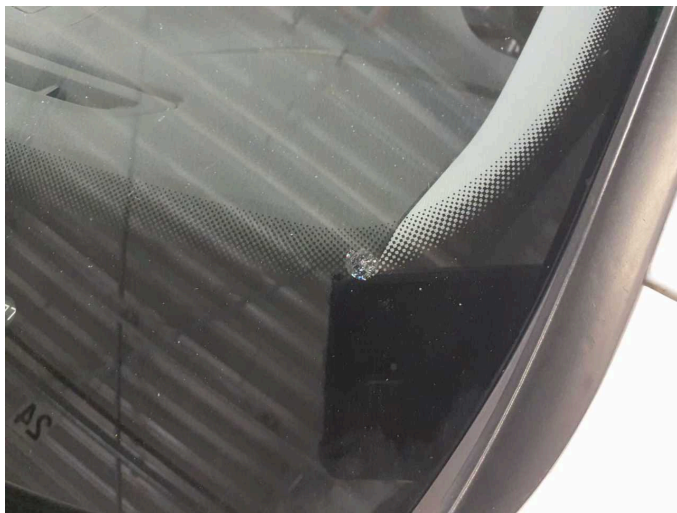
Damage 3: Bonnet: Bonnet - Stone chips - Paint



Damage 3: Bonnet: Bonnet - Stone chips - Paint



Damage 4: Vehicle glazing: Windscreen with lane departure assistant - Stone chips - Replace



Damage 4: Vehicle glazing: Windscreen with lane departure assistant - Stone chips - Replace



Wartungshistorie

(gemäß Auftraggeber Informationen)

Fahrgestellnummer: WVWZZZ3CZLE024774

Hersteller / Modell: VOLKSWAGEN VW Passat Variant 2.0 TDI SCR DSG 4Motion Elegance

Datum	KM-Stand	Beschreibung
06.02.2025	151.103	Batterie ern; Systemtest/Eigendiagnose
27.01.2025	150.267	AU; Motoröl b. Wartung; Ölfilter ern; Regelwartungsdienst; Wartung Sonstiges
14.06.2024	131.771	Reparatur Sonstiges; Systemtest/Eigendiagnose
27.03.2024	121.403	Bremse Sonstiges; Bremsklötze hinten; Bremsscheiben hinten; Getriebeöl ern/prüfen; Motoröl b. Wartung; Ölfilter ern; Regelwartungsdienst; Wartung Sonstiges
19.05.2023	91.326	Bremsflüssigkeit; Bremsflüssigkeit ern; Getriebeöl ern/prüfen; Kraftstofffilter ern; Luftfiltereinsatz ern; Motoröl b. Wartung; Ölfilter ern; Ölwechsel - Hinterachse; Regelwartungsdienst; Reparatur Sonstiges; Systemtest/Eigendiagnose; Wartung Sonstiges
10.01.2023	78.842	AU; Bremse Sonstiges; Bremsklötze vorne; Bremsscheiben vorne
07.06.2022	60.342	Motoröl b. Wartung; Ölfilter ern; Regelwartungsdienst; Wartung Sonstiges
04.02.2022	48.184	Bremse Sonstiges; Bremsklötze hinten; Bremsscheiben hinten
09.07.2021	29.820	Motoröl b. Wartung; Ölfilter ern; Regelwartungsdienst; Wartung Sonstiges