



VOLKSWAGEN Golf VI

Golf Plus 1.2 TSI

VIN NO WVWZZZ1KZDW540484

Registration Number KZDW540484



MOT Date



Last Service



Number of Owners



Last Service Mileage



Number of Keys



First Registration Date



Odometer Reading



Country First Registered



Inspection Report Summary

Customer	BCA Online	Report Number	P20250825095956
Inspection Date / Place	2025-08-25 / Dürkop Braunschweig	Cosmetic Grade	4

Vehicle Summary

Vehicle Condition	Runner	VAT Type	Margin
Fuel Type	Petrol	Road Worthy	Yes
Colour	Brown	Engine Size (cc)	1197
Engine Size	1.2	No of Doors	5
Body Type	Sedan	Drive Train	Front
Seat Colour		No of Seats	5
Seat Covering Name	Beige	Seat Covering	Cloth
Charging Cables		NEDC CO2 Rating (q/km)	139
Gearbox Type	Manual		

Vehicle History & Documents

Service Book Available	Missing	Next Service Mileage	km
Previous Usage		Imported	No
Manufacturer Warrenty			







Equipment

Trip Computer	Alloys wheels	Cruise control	Heated wing mirrors
Remote central locking	Stability control	Central locking	Radio
Airbag Status	Anti-lock braking	Front parking sensors	Remote adjusting wing mirrors
Roof rails	CD Player	Leather steering wheel	Rear parking sensors

Equipment Details

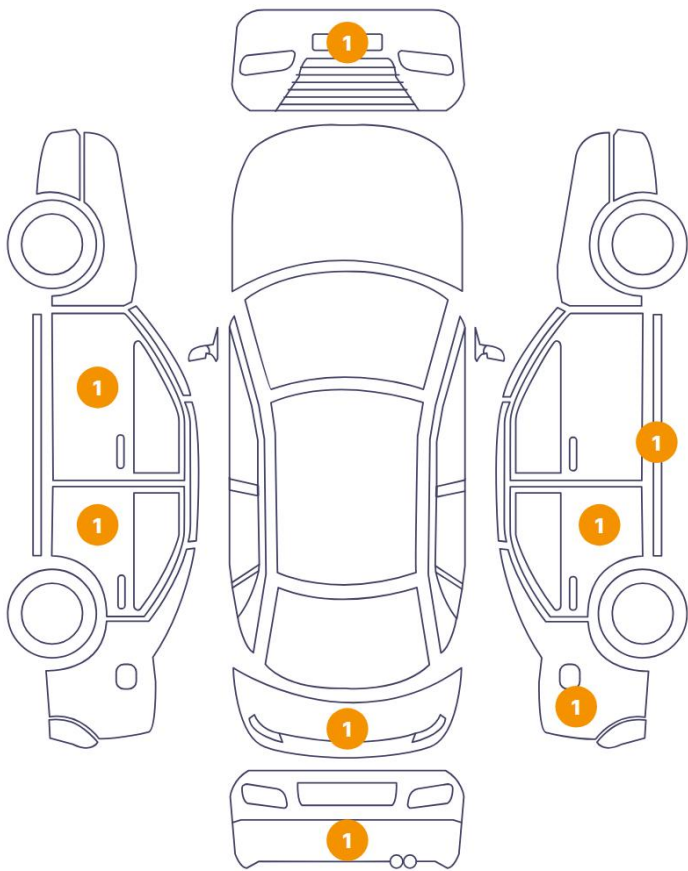
Air Conditioning	Yes	Alloy Wheel Size	16
Seat Heating	No		

Wheels & Tyres

Right Front Tyre Depth	5	Left Front Tyre Depth	5
Right Rear Tyre Depth	6	Left Rear Tyre Depth	6

Cosmetic Damage

8 Schäden



0 Schäden



Component	Damage	Comments
1 Door / Front Left	Paint / Scratch / Scuff	
2 Door / Back Left	Paint / Scratch / Scuff	
3 Tailgate	Paint / Scratch / Scuff	
4 Bumper / Back	Paint / Scratch / Scuff	
5 Side Panel / Back Right	Bodywork / Dent / Dent	
6 Door / Back Right	Paint / Scratch / Scuff	
7 Rocker Panel / Center Right	Bodywork / Dent / Dent	
8 Bumper / Front	Paint / Scratch / Scuff	



1. Door / Front Left
Paint / Scratch / Scuff -



2. Door / Back Left
Paint / Scratch / Scuff -



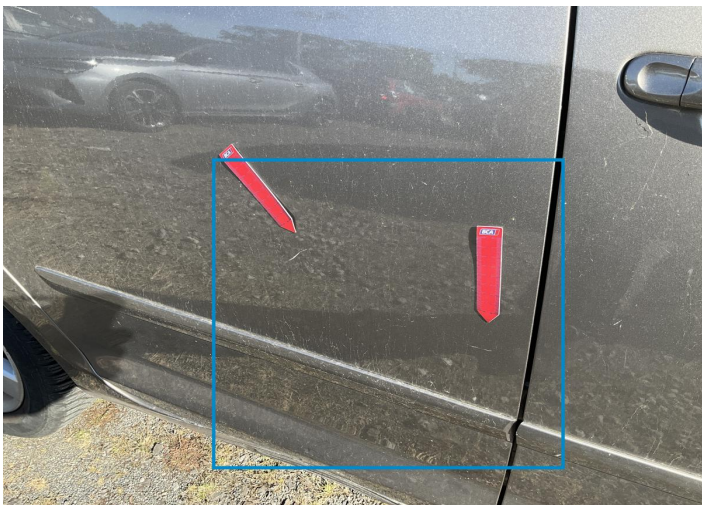
3. Tailgate
Paint / Scratch / Scuff -



4. Bumper / Back
Paint / Scratch / Scuff -



5. Side Panel / Back Right
Bodywork / Dent / Dent -



6. Door / Back Right
Paint / Scratch / Scuff -



7. Rocker Panel / Center Right
Bodywork / Dent / Dent -



8. Bumper / Front
Paint / Scratch / Scuff -

Mechanical Condition

Control Lights

ABS Warning Light	✓	ESP Fault/Traction Control Malfunction Light	✓
Oil Pressure Warning Light	✓	Brake Warning Light	✓
Power Steering Warning Light	✓	Alternator / Battery	✓
No Dashboard Lights	✓	Airbag Warning Light	!
Display Defect	✓	Service Light	✓
Tire Pressure Monitoring System	✓		

Engine

Engine Status / EML	✓	Engine Leak Visible	✓
Engine Starts	✓		

Gearbox

Gear Box	✓
----------	---

Equipments Test

AC / Heating System	✓	Central Locking	✓
Main & Spare Keys Functioning	✓	Electric Windows	✓
Parking Sensors / Cameras Functioning	✓	Other Equipments	✓

Levels

Brakes Fluid	NA	Coolant Fluid	✓
--------------	----	---------------	---

Test Drive Inspection

Steering Wheel

Steering | Noise / Anomaly

Engine

Engine Noise The Gears Scratch / Skip / Abnormal Operation

Fume Quantity Power Loss

Brake

Brake System Anomaly

Clutch

Clutch Functioning

General

Test Driven Status

- No troubles detected, good condition or correct tests, according to vehicle age and mileage
- Damages or malfunction detected that requires repairs by the buyer
- Not applicable
- Not tested

Disclaimer

Please also note the "UserGuide condition report", which shows the scope of the vehicle description. [User Guide](#)