



VOLKSWAGEN Golf VI

Golf Variant 1.4 TSI

VIN NO WVWZZZ1KZAM600700
Registration Number KZAM600700



MOT Date	Number of Owners	Number of Keys	Odometer Reading
-	2	2	181124 km
Last Service	Last Service Mileage	First Registration Date	Country First Registered
2023-11-30	161914	2010-01-13	-

Inspection Report Summary

Customer	BCA Online	Report Number	P20250926094255
Inspection Date / Place	2025-09-26 / Extern	Cosmetic Grade	4

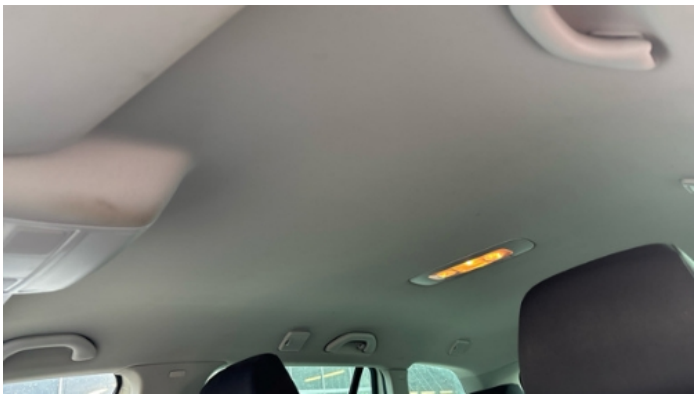
Vehicle Summary

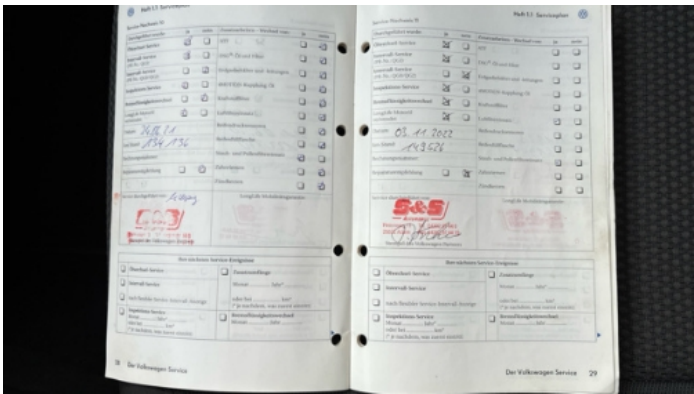
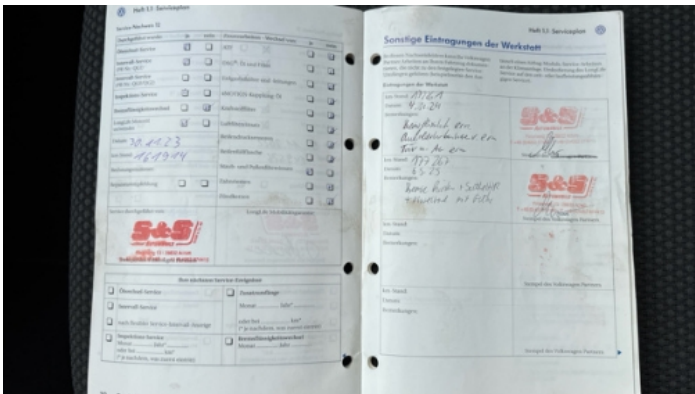
Vehicle Condition	Runner	VAT Type	Margin
Fuel Type	Petrol	Road Worthy	Yes
Colour	Silver	Engine Size (cc)	1390
Engine Size	1.4	No of Doors	5
Body Type	Stationwagon / Estate	Drive Train	Front
Seat Colour		No of Seats	5
Seat Covering Name	Anthrazit	Seat Covering	Cloth
Charging Cables		NEDC CO2 Rating (q/km)	146
Gearbox Type	Manual		

Vehicle History & Documents

Service Book Available	Present	Next Service Mileage	km
Previous Usage		Imported	No
Manufacturer Warrenty			







Equipment

Trip Computer	Anti-lock braking	Front parking sensors	Remote central locking
Satellite navigation	CD Player	Leather steering wheel	Rear parking sensors
Airbag Status	Cruise control	Remote adjusting wing mirrors	Roof rails
Stability control	Electrically folding wing mirrors	Radio	

Equipment Details

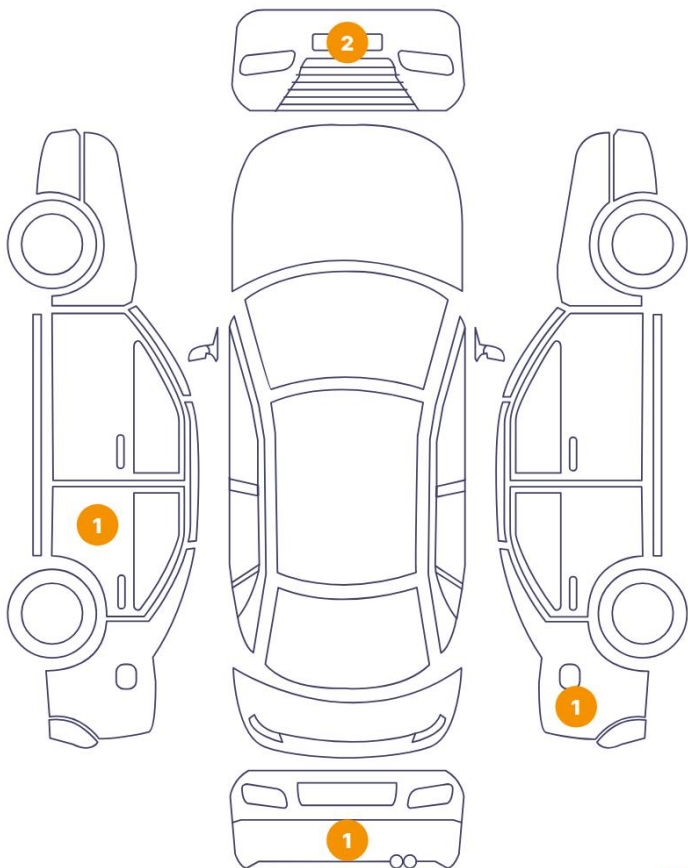
Air Conditioning	Dual Zone Climate Control	Seat Heating	Front
------------------	---------------------------	--------------	-------

Wheels & Tyres

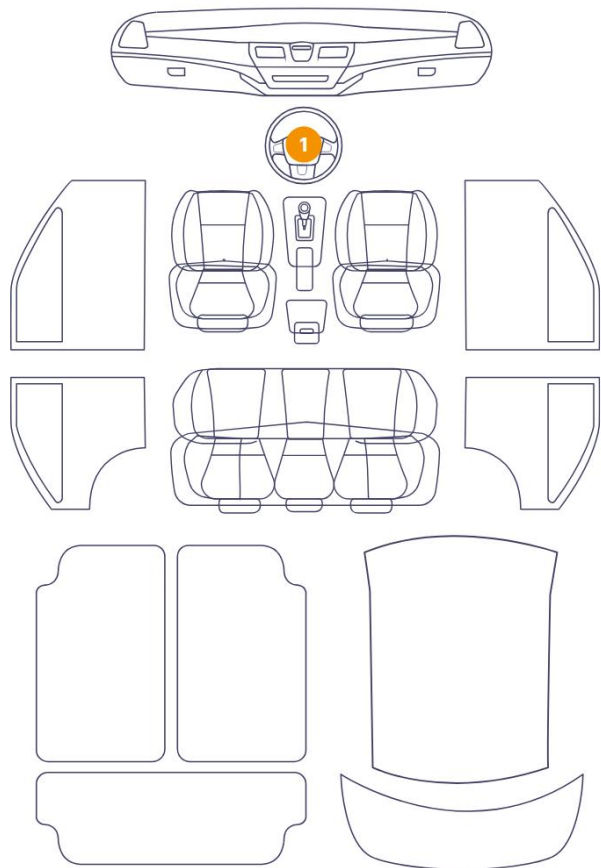
Right Front Tyre Depth	6	Left Front Tyre Depth	6
Right Rear Tyre Depth	6	Left Rear Tyre Depth	6

Cosmetic Damage

6 Schäden



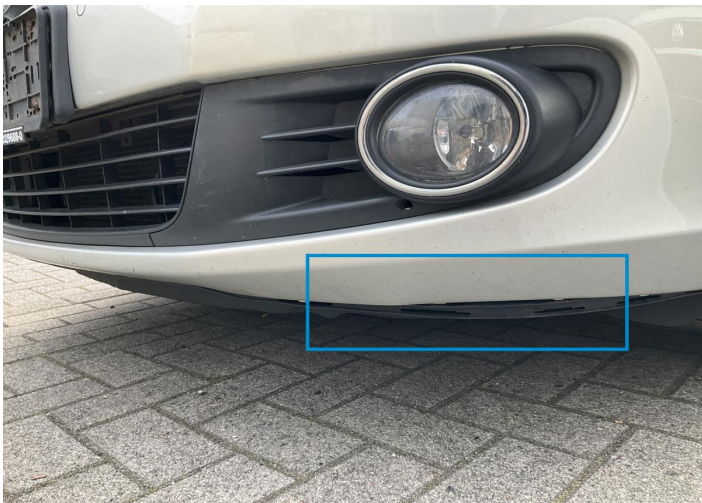
1 Schäden



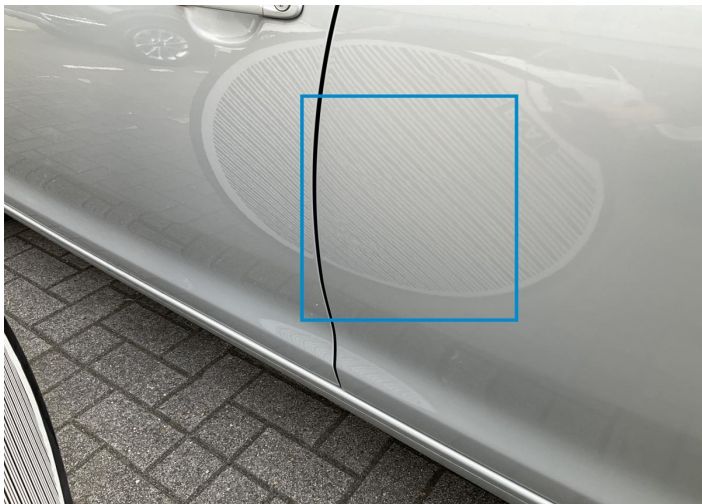
Component	Damage	Comments
1 Bumper / Front	Paint / Scratch / Scuff	
2 Bumper / Front	Bodywork / Assembly	
3 Door / Back Left	Bodywork / Dent / Dent	
4 Bumper / Back	Bodywork / Breakage	
5 Fender / Back Right	Bodywork / Dent / Dent	
6 Other	Paint / Poor Previous Repair	
7 Steering Wheel / Front	Interior / Worn - out	



1. Bumper / Front
Paint / Scratch / Scuff -



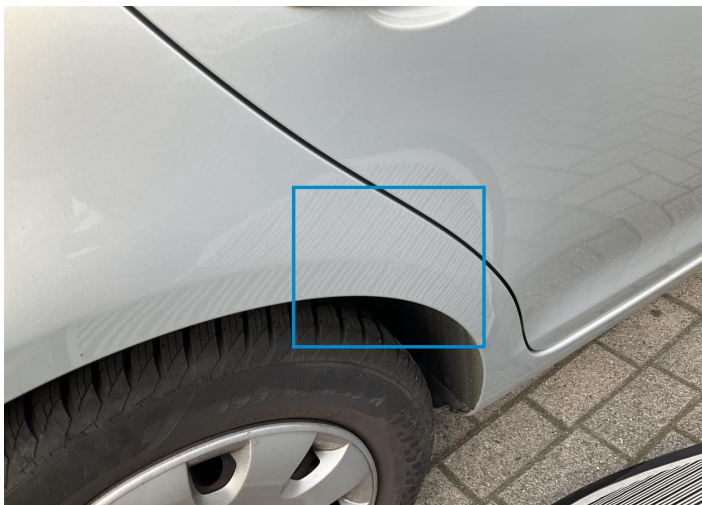
2. Bumper / Front
Bodywork / Assembly -



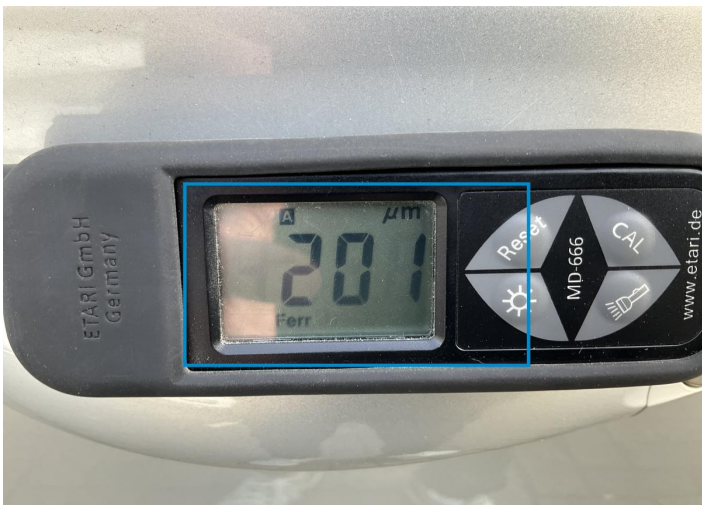
3. Door / Back Left
Bodywork / Dent / Dent -



4. Bumper / Back
Bodywork / Breakage -



5. Fender / Back Right
Bodywork / Dent / Dent -



6.
Paint / Poor Previous Repair -



7. Steering Wheel / Front
Interior / Worn - out -

Mechanical Condition

Control Lights

ABS Warning Light	✓	ESP Fault/Traction Control Malfunction Light	✓
Airbag Warning Light	✓	Brake Warning Light	✓
Alternator / Battery	✓	No Dashboard Lights	✓
Service Light	✓	Oil Pressure Warning Light	✓
Power Steering Warning Light	✓		

Engine

Engine Status / EML	✓	Engine Leak Visible	✓
Engine Starts	✓		

Gearbox

Gear Box	✓
----------	---

Equipments Test

Central Locking	✓	Main & Spare Keys Functioning	✓
Electric Windows	✓	Navigation System	✓
Audio Equipment	✓	Parking Sensors / Cameras Functioning	✓
AC / Heating System	✓	Other Equipments	✓

Levels

Brakes Fluid	✓	Coolant Fluid	✓
--------------	---	---------------	---

Test Drive Inspection

Brake			
Brake System Anomaly		✓	
Steering Wheel			
Steering Noise / Anomaly		✓	
Engine			
Engine Noise	✓	The Gears Scratch / Skip / Abnormal Operation	✓
Fume Quantity	✓	Power Loss	✓
Clutch			
Clutch Functioning		✓	
General			

Test Driven Status NA

- ✓ *No troubles detected, good condition or correct tests, according to vehicle age and mileage*
- ! *Damages or malfunction detected that requires repairs by the buyer*
- NA *Not applicable*
- ☐ *Not tested*

Disclaimer

Please also note the "UserGuide condition report", which shows the scope of the vehicle description. [User Guide](#)