



VOLKSWAGEN T-Cross

T-Cross 1.0 TSI OPF

VIN NO WVGZZZC1ZMY051235

Registration Number 1ZMY051235



MOT Date

2025-12-01

Last Service



Number of Owners

1

Last Service Mileage



Number of Keys

2

First Registration Date

2020-12-16

Odometer Reading

69251 km

Country First Registered

Germany

Inspection Report Summary

Customer	BCA Online	Report Number	P20250926121640
Inspection Date / Place	2025-09-26 / BCA Neuss	Cosmetic Grade	1

Vehicle Summary

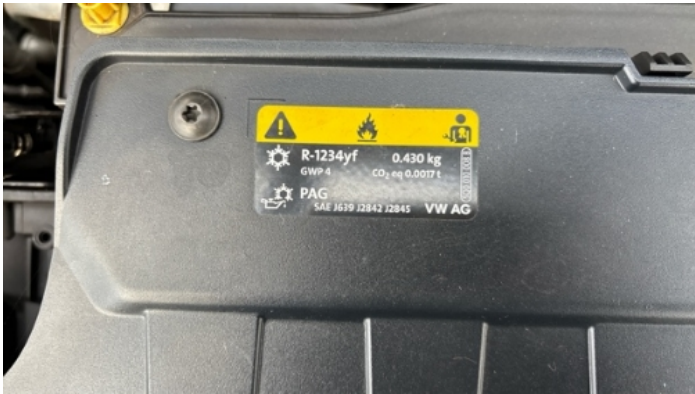
Vehicle Condition	Runner	VAT Type	Qualifying
Fuel Type	Petrol	Road Worthy	Yes
Colour	Grey	Engine Size (cc)	999
Engine Size	1.0	No of Doors	5
Body Type	SUV	Drive Train	Front
Seat Colour		No of Seats	5
Seat Covering Name	anthrazit	Seat Covering	Cloth
Charging Cables		WLTP CO2 Emissions	
Gearbox Type	Manual		

Vehicle History & Documents

Service Book Available	-	Next Service Mileage	km
Previous Usage		Imported	No
Manufacturer Warrenty			







Equipment

Tow ball	Alloys wheels	Bluetooth telephone interface	Digital Radio
Heated wing mirrors	Remote central locking	Satellite navigation	Electrically folding wing mirrors
Radio	Airbag Status	Anti-lock braking	Cruise control
Front parking sensors	Remote adjusting wing mirrors	Roof rails	Stability control
Leather steering wheel	Rear parking sensors		

Equipment Details

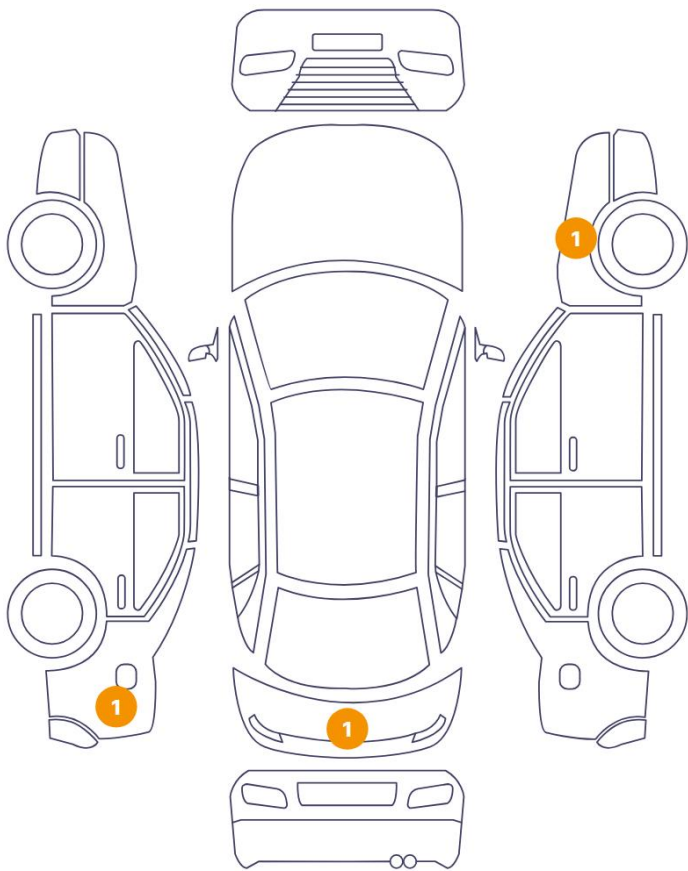
Tow Ball Type	Static	Air Conditioning	Dual Zone Climate Control
Alloy Wheel Size	16	Seat Heating	Front

Wheels & Tyres

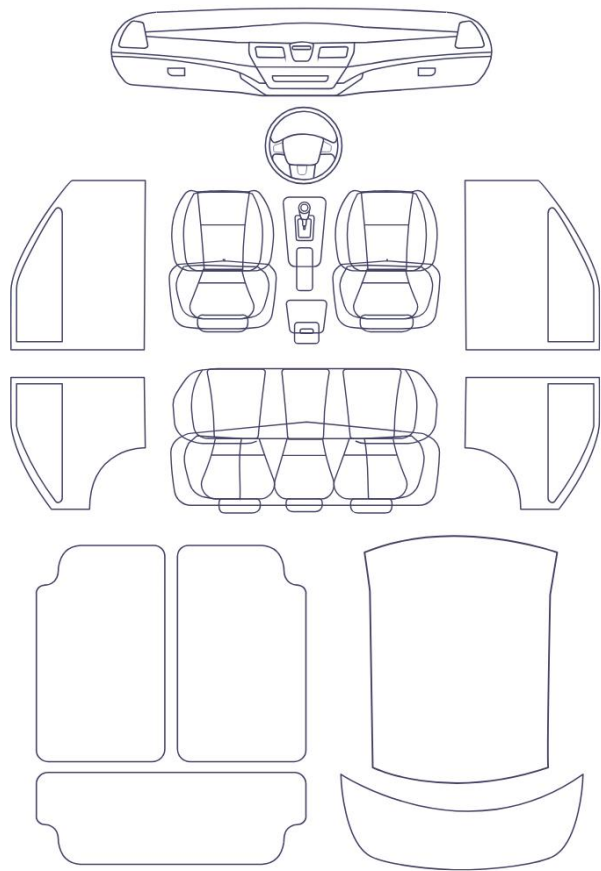
Right Front Tyre Depth	4	Left Front Tyre Depth	4
Right Rear Tyre Depth	4	Left Rear Tyre Depth	4

Cosmetic Damage

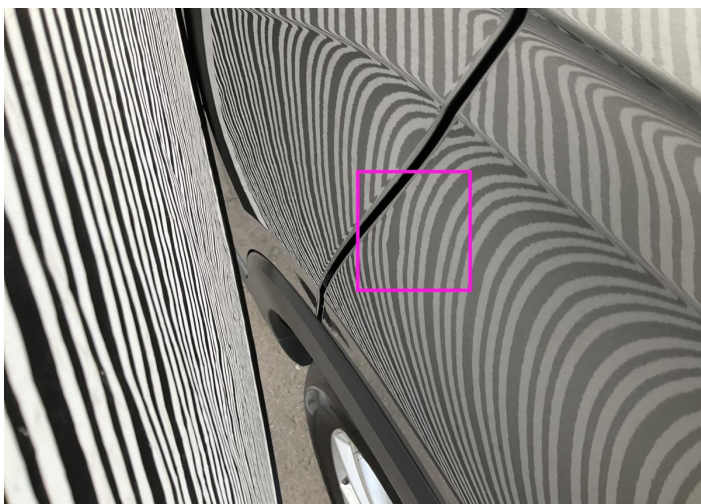
3 Schäden



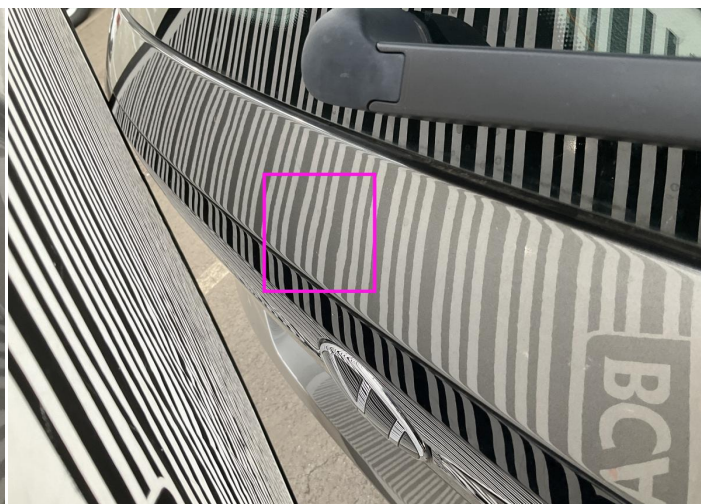
0 Schäden



Component		Damage	Comments
1	Fender / Back Left	Bodywork / Dent / Dent	
2	Tailgate	Bodywork / Dent / Dent	
3	Fender / Front Right	Paint / Scratch / Scuff	



1. Fender / Back Left
Bodywork / Dent / Dent -



2. Tailgate
Bodywork / Dent / Dent -



3. Fender / Front Right
Paint / Scratch / Scuff -

Mechanical Condition

Control Lights

ABS Warning Light	✓	ESP Fault/Traction Control Malfunction Light	✓
Airbag Warning Light	✓	Oil Pressure Warning Light	✓
Brake Warning Light	✓	Power Steering Warning Light	✓
Alternator / Battery	✓	No Dashboard Lights	✓
Display Defect	✓	Tire Pressure Monitoring System	✓

Engine

Engine Status / EML	✓	Engine Leak Visible	✓
Engine Starts	✓		

Gearbox

Gear Box	✓
----------	---

Levels

Brakes Fluid	✓	Coolant Fluid	⚠
--------------	---	---------------	---

Equipments Test

Main & Spare Keys Functioning	✓	Electric Windows	✓
Navigation System	✓	Parking Sensors / Cameras Functioning	✓
AC / Heating System	✓		

Test Drive Inspection

Engine			
Engine Noise	✓	The Gears Scratch / Skip / Abnormal Operation	✓
Fume Quantity	✓	Power Loss	✓
Brake			
Brake System Anomaly	✓		
Steering Wheel			
Steering Noise / Anomaly	✓		
Clutch			
Clutch Functioning	✓		
General			
Test Driven Status	✓		

- ✓ *No troubles detected, good condition or correct tests, according to vehicle age and mileage*
- ! *Damages or malfunction detected that requires repairs by the buyer*
- NA *Not applicable*
- ☐ *Not tested*

Disclaimer

Please also note the "UserGuide condition report", which shows the scope of the vehicle description.

[User Guide](#)