



Expertise

Protocol number: 41128894
Order No. / Reference: 25064828
Inspection date: 19 Aug 2025

Manufacturer: Volkswagen

Model: T-Roc 2.0 TDI SCR DSG UNITED

VIN: WVGZZA1ZMV017206



Vehicle details	
Manufacturer / Type / Model / Equipment	
Volkswagen T-Roc 2.0 TDI SCR DSG UNITED	
Vehicle Identification number	WVGZZA1ZMV017206
Mileage (Read)	183,591 km
First registration	29 Oct 2020
Number of holders	1
Next periodical technical inspection	11/2025
(Report on hand)	
Power / Engine displacement	110 kw / 1,968 ccm
Fuel type / Cylinder	Diesel / 4
Gearbox / Number of gears	Automatic transmission / 7
Type of drive	Front drive
Type of vehicle	SUV
Colour / colour code	uranograu
Doors / Seats	5 / 5
Upholstery type	Cloth
Colour of upholstery	Black



Vehicle details

Maintenance booklet / proof	digital proof / complete	Next maintenance in	27,700 km
Last maintenance on / at	06/2025 at 181,177 km		
Key is / should be	2 / 2	FZG documents	ZB#2 (B) was available (copy), ZB#1 (S) was not available
		Letter No.	FU695939
Previous damage / Accident	Detectable	Repainting	Detectable
Inspection conditions	sufficient	Lifting equipment / pit	yes
Test drive	Not performed	Engine function test	Performed
Manufacturer key number/ type code number	0603 / CFP 00062		
Emission standard	EURO6;WLTP;DG;PI/CI; M, N1 I	Fine dust sticker	
Permitted total weight	1,960 kg	Empty weight	

Tyres

Mounted tyres

#	Tyre size	Type of tyre	Manufacturer	Tread depth
1)	215/50 R18 96W	Summer tyres on Light alloy	Semperit	6mm / 6mm
2)	215/50 R18 96W	Summer tyres on Light alloy	Semperit	6mm / 6mm

Additional tyres

#	Tyre size	Type of tyre	Manufacturer	Tread depth
1)	205/60 R16 96H	Winter tyres on Light alloy	Continental	5mm / 5mm
2)	205/60 R16 96H	Winter tyres on Light alloy	Continental	5mm / 5mm

Replacement

Typ	Tyre size	Type of tyre	Manufacturer	Tread depth
	Tirefit	Expiration date 07/2024		

Legend: Tread depth information for tires on the left is in the first place, for tires on the right is in the second place on the axle in the direction of travel

Equipment

Standard equipment

- | | |
|---|--|
| <ul style="list-style-type: none"> • Airbag for driver and front passenger, with passenger airbag deactivation • Ambient lighting white • App-Connect including App-Connect Wireless for Apple CarPlay and Android Auto • Exterior mirror housing painted in contrasting color • Brake light, third • diesel particulate filter • Door sills for special model • Electronic stabilization program with counter-steering support • Driving profile selection • Front window in laminated safety glass, heat-insulating • Luggage compartment floor height adjustable and removable • Rear window wiper with interval control • ISOFIX anchorage points • Headrests (3) rear • Paint finish: Uni • Make-up mirrors in the sun visors • Front center armrest including USB-C interface and USB charging socket • Navigation system "Discover Media" including "Streaming & Internet" • Emergency call service • Upholstery: Seat covers for special model • Radio accessories: 6 speakers • Rain sensor • Wheels: 4 light alloy wheels "Dublin" 7 J x 17 in black, surface polished • Leather gearshift knob • Front windscreen washer nozzles automatically heated • Electromechanical power steering • Seats: Comfort seats in the front • Seats: Heated front seats • Voice control • Start-stop system with brake energy recovery • Telephone interface • Textile floor mats front and rear • Prepared for "We Connect" and "We Connect Plus" • Central locking without safe security, with radio remote control, and 2 radio keys | <ul style="list-style-type: none"> • Airbag: Head airbag system for front and rear passengers including front side airbags • Extended warranty, 3 years following the manufacturer's warranty, max. total mileage 50,000 km • Exterior mirrors electrically adjustable and heated • Hill start assist • Decorative inlays for special model • tachometer • Electronic parking brake including auto-hold function • Automatic headlight switching with LED daytime running lights • Electric windows front and rear • Pedestrian detection • Transmission: 7-speed DSG • Rear window heated • Interior mirror automatically dimming • Air Care Climatronic air conditioning system • Front headrests • Steering wheel: Multifunction steering wheel in leather, with shift paddles • Multifunction display "Plus" • Fatigue detection • Non-smoking version • Emergency braking assistant "Front Assist" • Pedals in brushed stainless steel • Radio • Radio accessories: Digital radio reception DAB+ • Tire pressure monitoring indicator • Wheels: Tire Mobility Set • Taillights in LED technology • Windows: Rear side windows and rear window tinted • Drawer under the right front seat • Seat belts: three-point automatic seat belts • Seats: Rear seat backrest asymmetrically split folding • Seats: Front seats with height adjustment • Lane keeping assistant "Lane Assist" • Bumper with underbody protection in silver metallic, air intake in honeycomb structure • Traffic sign recognition • Electronic immobilizer |
|---|--|

Extra equipment

- | | |
|--|--|
| <ul style="list-style-type: none"> • Adaptive Cruise Control (ACC) and Front Assist Emergency Braking System (Adaptive Cruise Control (ACC) "stop & go" including speed limiter - Front Assist Emergency Braking System (for Adaptive Cruise Control (ACC) up to 210 km/h)) • Light Assist high beam control | <ul style="list-style-type: none"> • Exterior mirrors electrically adjustable, folding and heated (with passenger mirror lowering) • Parking aid (warning signals for obstacles in the front and rear areas) |
|--|--|



- LED headlights (LED headlights for low and high beam - dynamic headlight range adjustment)
- Fog lights and cornering lights
- Package: Plus package for special models (4 "Montego Bay" alloy wheels, 7 J x 18, high-sheen finish - Active Info Display, multi-color, various info profiles selectable - black headliner - wheel locks with enhanced anti-theft protection - 215/50 R 18 tires - "Comfort" telephone interface with inductive charging function)
- Chassis: Sports chassis (with progressive steering: - the steering ratio is progressively increased with increasing steering angle - the steering behavior becomes noticeably more direct depending on the driving situation, the steering wheel angles are significantly reduced and thus steering comfort is increased)
- Radio accessories: "beatsAudio" sound system (6 speakers - 8-channel digital amplifier - subwoofer - 300 watts total power)
- Rear view camera

Brief expert findings

Documents submitted	At the time of the inspection, the registration certificate Part 2 (letter) was available, but the registration certificate Part 1 (certificate) was not. (Copy)
VIN comparison	The vehicle identification number (VIN) was read from the vehicle and its conformity with the submitted documents was verified during the inspection by the undersigned.
Inspection	The inspection conditions were sufficient for the assessment of the vehicle. Lifting equipment and a pit were available for examining the vehicle.
Test drive	No test drive/maneuvering was carried out during the inspection of the vehicle.
Engine function test	An engine test run was performed.

Value reducing factors

No.	Component group	Description
1	Equipment	Tirefit filler - Expired - Replace
2	Front bumper	Front bumper - Paint defect - Paint
3	Bonnet	Bonnet - Scratch(es) - Paint
4	Vehicle glazing	Windscreen - Stone chips - Replace

Wear and tear

No.	Component group	Description
1	Rear bumper	Rear bumper - Scratch(es) - No deduction
2	Interior	Interior - Scratch(es) - No deduction

The vehicle shows signs of wear commensurate with its age and use.

Previous damages

No.	Previous damage	Extent of damage (Net)
1	Rear, Provided by user / customer, from 10 Mar 2025	2.886,07 €

Repainting

No.	Repainting
1	Mudguard - right side, Professionally carried out, Invoice of repair done Non-existent



Order/Scope of order

The order was placed to prepare a sales report for the vehicle described. This includes the following:

- Description of core relevant information about the vehicle
- Documentation of equipment features
(*Delivery by third-party service providers*)
- Documentation of damage, defects, missing parts
- Documentation of previous damage, unrepaired previous damage, repainting
- a brief visual or functional inspection of the equipment details if possible.
(*Functional tests of driver assistance systems are not included in the scope of services!*)
- a photo documentation of the vehicle

Basis for the order

This product is based on the Alphabet Fuhrpark GmbH guidelines for vehicle returns and valuations. The expert makes the explicit findings in each individual case objectively within the framework of the specified standards based on his or her own expertise.

The vehicle inspection takes place in a disassembled state.

Damage or defects that can only be detected during disassembly/diagnosis work or through advanced knowledge remain within the scope of the prognosis risk. An extended risk exists for concealed defects caused by fraudulent deception and not identifiable by the expert.

Damage or defects resulting from normal use or wear and tear of the vehicle will be accepted according to the applicable standard.

There was no explicit identification or monetary consideration of the expected features within the product.

Features which in their nature and severity slightly exceed normal use but do not constitute unacceptable damage will be documented and identified under signs of use if necessary.

Damage or defects which, according to the underlying standard, can no longer be attributed to normal use or wear and tear are listed in the product under "Depreciating Factors".

Depending on the product specification, a monetary ID can be provided. If this takes place, the costs can be 100% d or pro rata depending on the vehicle's age and mileage.

Previous damages

According to available information previous damages were repaired at the vehicle. Traces of repairs, which allow conclusions about the area of repair, were not recognizable during the inspection.

Comments

Das Fahrzeug befand sich zum Besichtigungszeitpunkt in beschädigten, nicht demontierten Zustand. Schadenausweitung möglich, Zusatzkosten können entstehen.

Der Winterradsatz ist nicht Bestandteil der vorliegenden Fahrzeugausstattung.



Figure 1: Diagonal front (left)



Figure 2: Diagonal front (right)



Figure 3: Diagonal rear (left)



Figure 4: Diagonal rear (right)



Figure 5: Interior - front



Figure 6: Interior - rear



Figure 7: Instrument cluster



Figure 8: Instrument panel



Figure 9: interior 360° view ([Online link](#))



Figure 10: Cargo area



Figure 11: VIN



Figure 12: Mounted tyres

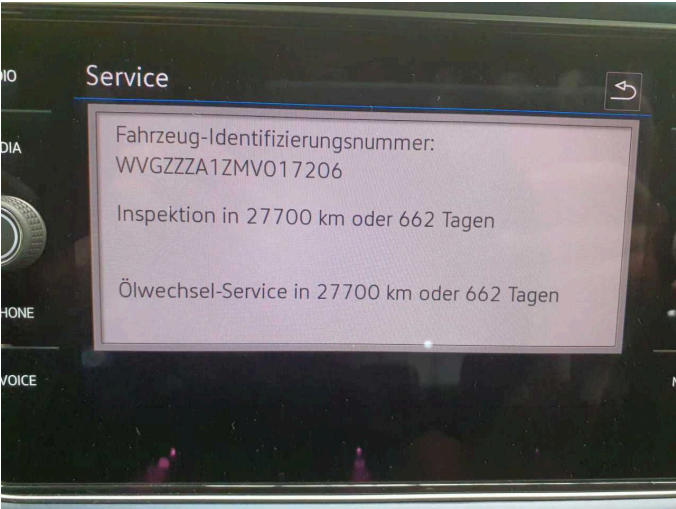


Figure 13: Documents

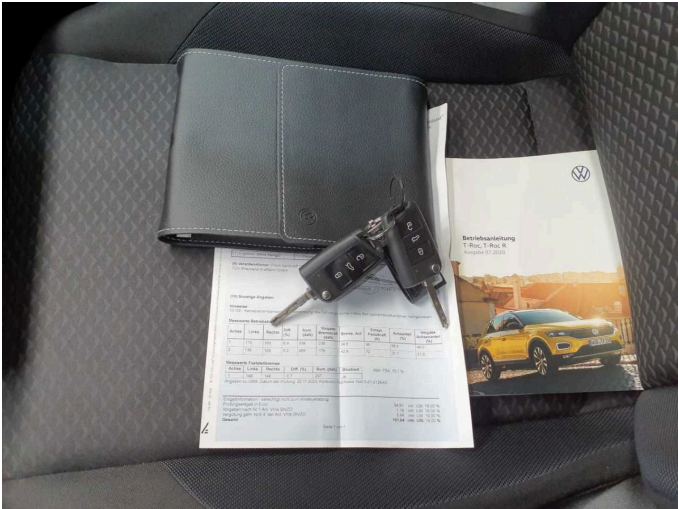


Figure 14: Documents



Figure 15: Additional tyres

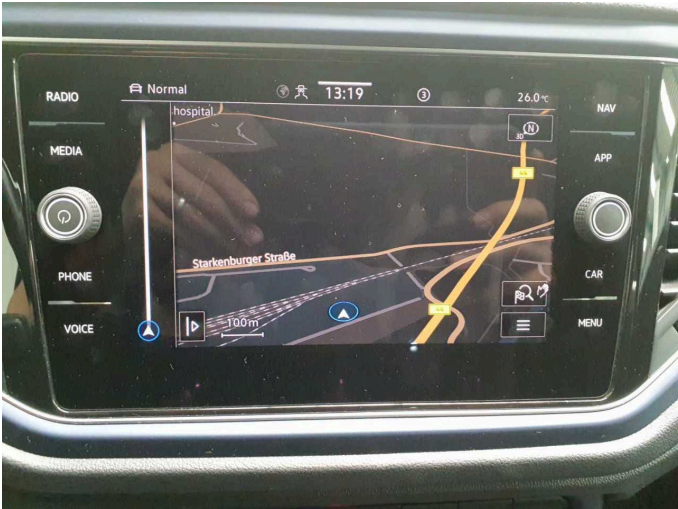


Figure 16: Navigation



Figure 17: Misc.



Figure 18: Misc.



Figure 19: Misc.



Figure 20: Misc.



Figure 21: Misc.

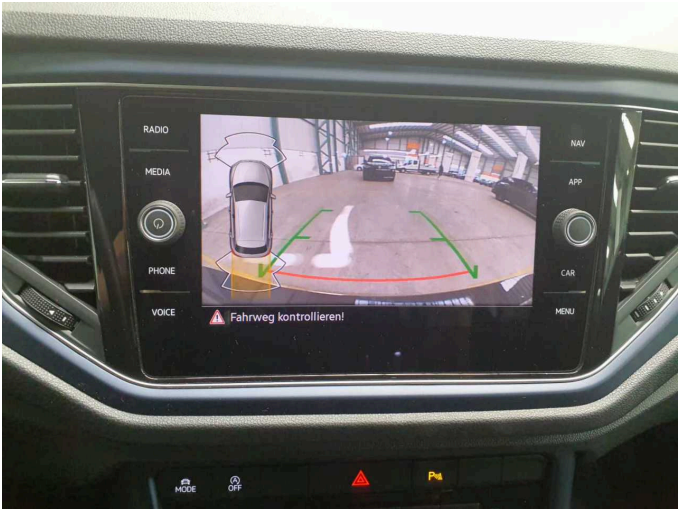


Figure 22: Misc.



Figure 23: Misc.



Figure 24: Misc.



Figure 25: Misc.



Figure 26: Misc.



Figure 27: Misc.



Figure 28: Misc.



Damage 2: Front bumper: Front bumper - Paint defect - Paint



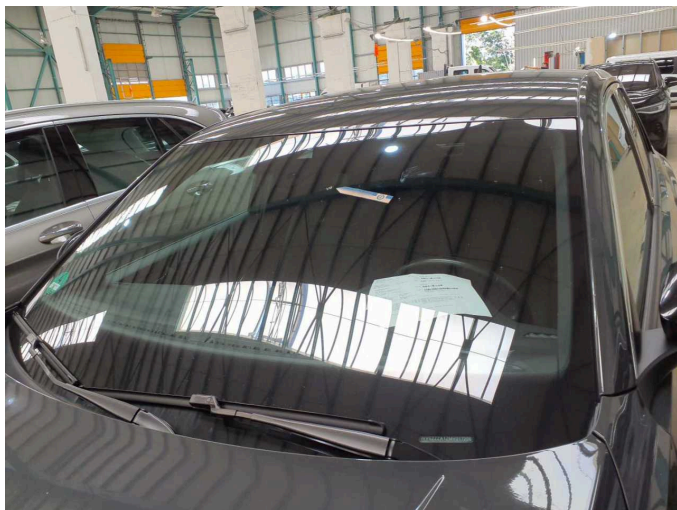
Damage 2: Front bumper: Front bumper - Paint defect - Paint



Damage 3: Bonnet: Bonnet - Scratch(es) - Paint



Damage 3: Bonnet: Bonnet - Scratch(es) - Paint



Damage 4: Vehicle glazing: Windscreen - Stone chips - Replace



Damage 4: Vehicle glazing: Windscreen - Stone chips - Replace



Repainting 1: Mudguard - right side



Repainting 1: Mudguard - right side



Wartungshistorie

(gemäß Auftraggeber Informationen)

Fahrgestellnummer: WVGZZZA1ZMV017206

Hersteller / Modell: VOLKSWAGEN VW T-Roc 2.0 TDI SCR DSG UNITED

Datum	KM-Stand	Beschreibung
12.06.2025	181.177	Bremsflüssigkeit; Bremsflüssigkeit ern; Kraftstofffilter ern; Luftfiltereinsatz ern; Motoröl b. Wartung; Ölfilter ern; Regelwartungsdienst; Systemtest/Eigendiagnose; Wartung Sonstiges
05.08.2024	152.272	Motoröl b. Wartung; Ölfilter ern; Regelwartungsdienst; Wartung Sonstiges
22.11.2023	121.267	AU; Getriebeöl ern/prüfen; Motoröl b. Wartung; Ölfilter ern; Regelwartungsdienst; Wartung Sonstiges; Wartung Sonstiges
21.04.2023	94.962	Bremse Sonstiges; Bremsklötze hinten; Bremsscheiben hinten
29.03.2023	92.830	Bremse Sonstiges; Bremsflüssigkeit; Bremsflüssigkeit ern; Bremsklötze vorne; Bremsscheiben vorne; Kraftstofffilter ern; Luftfiltereinsatz ern; Motoröl b. Wartung; Ölfilter ern; Regelwartungsdienst; Systemtest/Eigendiagnose; Wartung Sonstiges
27.06.2022	62.495	Motoröl b. Wartung; Ölfilter ern; Regelwartungsdienst; Wartung Sonstiges; Wartung Sonstiges
04.08.2021	30.598	Motoröl b. Wartung; Ölfilter ern; Regelwartungsdienst; Wartung Sonstiges