



## status report

**customer:** Bank 11, Neuss  
**contract number:** 908251430  
**reference:**

### vehicle data

#### Volkswagen T-Roc Style

Vehicle identification number	<b>WVGZZA1ZKV020133</b>	mileage read:	<b>52462 km</b>
..			
First Registration / construction year:	<b>08.11.2018 / 2018</b>	Visit Date / place of birth:	<b>21.11.2024 Riedstadt-Goddelau</b>
Bodywork:	<b>SUV</b>	Re - import:	<b>unknown</b>
Body type:	<b>Road /</b>	KBA no. :	<b>0603//CFO</b>
Fuel / emission class:	<b>diesel / -</b>	transmission type:	<b>manual transmission</b>
Displacement / power:	<b>1598 ccm / 85 kW (116 PS)</b>	Engine:	<b>front-wheel drive</b>
paint:	<b>Pure White</b>	Number of previous owners:	<b>3</b>
Doors / seats:	<b>5 / 5</b>	number keys:	<b>2</b>
Next HU / AU:	<b>- / -</b>	cushion type:	<b>substance</b>
Service book available:	<b>no</b>	Interior Color:	<b>black</b>
smoking vehicle:	<b>no</b>	Last service km / on the:	<b>- / -</b>
Vehicle roadworthy:	<b>yes</b>	Vehicle roadworthy:	<b>yes</b>
Submitted vehicle	<b>-</b>	state outside:	<b>3 - Average</b>
documents:			
visit condition:	<b>-</b>	condition inside:	<b>3 - Average</b>
state general:	<b>3 - Average</b>		

### Accessories (presented to the visiting time )

GPS sat nav disk:	Fzg.Schlüssel:	Service book provided / maintained:	Last service at / on:
-	2	no / -	- / -

<input checked="" type="checkbox"/> AHK key	<input checked="" type="checkbox"/> AHK removable	<input checked="" type="checkbox"/> AHK fixed	<input checked="" type="checkbox"/> AHK swivel
<input checked="" type="checkbox"/> Fernbed . entertainment	<input checked="" type="checkbox"/> Fernbed . Auxiliary heating	<input checked="" type="checkbox"/> headphone	<input checked="" type="checkbox"/> LED headlights
<input checked="" type="checkbox"/> Load compartment cover	<input checked="" type="checkbox"/> navigation system	<input checked="" type="checkbox"/> Persenning	<input checked="" type="checkbox"/> partition net
<input checked="" type="checkbox"/> Wind Deflector	<input checked="" type="checkbox"/> Xenon headlights		

☒ **available**

☒ **not available**

Hüsges GmbH  
Gießerallee 23  
47877 Willich  
Tel.: 02154 / 9534 0  
E-Mail: gutachten@huesges-group.eu

The status report was created impartially and to the best of my knowledge. The images listed in the status report are part of the vehicle description regarding the equipment and the vehicle condition.



Hüsges Gruppe®  
**Die Gutachter**



mounted tires		
Tyre / wheel type:	<b>summer tires</b>	<b>aluminum</b>
1st axis - Left / states .	<b>Falken</b>	<b>215/55/R17/94V 3 mm</b>
1st axis - right / states .	<b>Falken</b>	<b>215/55/R17/94V 3 mm</b>
2nd axis - Left / states .	<b>Falken</b>	<b>215/55/R17/94V 4 mm</b>
2nd axis - right / states .	<b>Falken</b>	<b>215/55/R17/94V 4 mm</b>
traffic Safety:	<b>roadworthy</b>	
spare wheel:	<b>Tirefit</b>	
state spare wheel:	-	

standard equipment	
<ul style="list-style-type: none"> <li>• 3-point rear center seat belt</li> <li>• Ambient lighting white</li> <li>• Acceleration skid control ( ASR )</li> <li>• Automatic headlight activation ( AS ) and Leaving Home / Coming Home light function</li> <li>• Power side mirrors . adjustable and heated</li> <li>• brake Assist</li> <li>• Chrome package <i>Chromeinfassung Lichtschalter, Chromeinfassung Fensterheberschalter, Chromeinfassung Spiegelverstellung</i></li> <li>• Chrome strips bumper rear</li> <li>• Roof painted in a different color / contrasting color</li> <li>•</li> <li>• Electron. Stability Program (ESP )</li> <li>• Driving Assistance System Hill Start Assist</li> <li>• Driving Assistance System fatigue detection sensor</li> <li>• Driving Assistance System environment monitoring system (front assist) with City Emergency Braking <i>Fahrassistenz-System: City-Notbremsfunktion</i></li> <li>• Front glass laminated glass tinted</li> <li>• Textile floor mats</li> <li>• Luggage compartment floor height adjustable</li> <li>• LED Taillights</li> <li>• Interior Decor inlays Black Oak Brown matt</li> <li>• Isofix admissions for child seat in back seat</li> <li>• air Conditioning</li> <li>• Rear headrests (3- fold)</li> <li>• LM rims</li> <li>• Multifunctional Display Plus</li> <li>• Non smoking package</li> <li>•</li> </ul>	<ul style="list-style-type: none"> <li>• Airbag driver / passenger side, front passenger airbag can be switched off</li> <li>• Anti- lock braking system ( ABS )</li> <li>• Drive Front Wheel Drive</li> <li>• Mirrors, aspheric, left</li> <li>• painted mirrors</li> <li>• Lining Wear</li> <li>• Chrome strips on side windows</li> <li>• Connectivity Package <i>Multimedia-Schnittstelle USB (iPhone / iPod), Bluetooth-Schnittstelle für Mobiltelefon</i></li> <li>• Headliner fabric , gray</li> <li>• Electron. Differential lock (EDL )</li> <li>• Trailer stabilization program</li> <li>• Driving Assistance System pedestrian recognition</li> <li>• Driving Assistance System Lane Departure Warning ( Lane Assist )</li> <li>• Electric windows front + rear</li> <li>• Radio key (2) foldable</li> <li>• Footwell lighting front</li> <li>• Transmission 6-speed</li> <li>• rear window wiper</li> <li>• Rearview mirror with auto dip</li> <li>• Body 5-door</li> <li>• Head airbag system, front and rear incl . Side airbags</li> <li>• Reading lights front and rear LED</li> <li>• Motor 1,6 Ltr. - 85 kW TDI</li> <li>• Rear fog light</li> <li>• Parking brake electrically <i>Auto-Hold-Funktion</i></li> </ul>

<ul style="list-style-type: none"> <li>• Tire pressure warning indicator</li> <li>• Rear seat back divided with center armrest</li> <li>• Gearshift / selector lever leather</li> <li>• Power steering electro-mechanical and speed-dependent</li> <li>• Seat cover / upholstery fabric tracks</li> <li>• Comfort front seats</li> <li>• Start / Stop system</li> <li>• Door cover below black with chrome trim</li> <li>• First aid kit and warning triangle</li> <li>• Immobiliser (electronic )</li> <li>• Central locking with remote control</li> </ul>	<ul style="list-style-type: none"> <li>• Tire repair kit</li> <li>• Rußpartikelfilter</li> <li>• Low emissions Euro 6 emission standards</li> <li>• SCR ( AdBlue technology )</li> <li>• Seat belts front with belt tensioner, height adjustable</li> <li>• Seats, front height adjustable</li> <li>• Sun visors with mirrors (illuminated)</li> <li>•</li> <li>• Exterior door handles body color</li> <li>• Warning system for safety belts front and rear</li> <li>• Tinted heat insulating glass green</li> </ul>
--	---

special Features	
<ul style="list-style-type: none"> <li>• Audio System Composition Media (MP3 playback capability , Radio / CD player , Bluetooth)  <i>Antennen-Diversity, Audiosystem: CD-Player, Lautsprecher (6), Multimedia-Schnittstelle USB (iPhone / iPod) mit AUX-IN, Bluetooth-Schnittstelle für Mobiltelefon</i></li> <li>• Park Distance Control ( front and rear)</li> <li>• Light and Sight Package 1  <i>Scheibenwischer mit Regensensor</i></li> <li>• emergency call system</li> <li>• Winter tires also  <i>Bordwerkzeug und Wagenheber</i></li> </ul>	<ul style="list-style-type: none"> <li>• roof rails</li> <li>• Steering wheel ( leather) with multifunction</li> <li>• Navigation module Discover Media ( audio system )  <i>Volkswagen Media Control</i></li> <li>• Special paint Pure White</li> </ul>

We remind you that the data provided were taken from the DAT database.\n\nNo liability can be assumed for the completeness and correctness.

General examination	
<b>Subfloor Inspection:</b>	<b>not possible</b> A visit to the underside of your vehicle could not be performed. Hoist or lifting means not available .
<b>Mileage plausible:</b>	<b>not testable</b> not testable Wartungsnachweise fehlen
<b>reference:</b>	
<b>Note Road Safe:</b>	

Farbabweichung Plastikteile

Accident injury assessment

<b>Rep. Predamages / -height gross:</b>	<b>no detectable</b> As part of a paint film thickness measuring the body outer skin no previous damage could be detected .
<b>Layers of paint thickness measurement:</b>	<b>Within the tolerances</b> At the vehicle , a resist layer thickness measurement was carried out on the body outer skin. The measured values ??were within the tolerances of original finishes . Evidence that points to a repaired accident damage or repainting carried out , were identified.
<b>Existing collision damage:</b>	<b>Not established</b> On the vehicle body shell were on visual examination found no existing accident damages (other than the usual signs of use) .
<b>reference:</b>	

#### Overview conducted technology audit

<b>Alternator / Generator:</b>	✓ examined limited	<b>Battery / accumulator:</b>	✓ in order
<b>oil loss:</b>	✓ examined limited		
<b>air conditioning:</b>	✗ not possible	<b>lighting system:</b>	✓ examined limited
<b>coupling:</b>	✓ examined limited	<b>exhaust System:</b>	✓ examined limited
<b>engine running:</b>	✓ examined limited	<b>shock absorber:</b>	✓ examined limited
<b>transmission:</b>	✓ examined limited		

#### Performed testing technology

<b>Alternator / Generator:</b>	The function of the alternator (generator) was tested using the charging indicator light in the instrument cluster .
<b>Battery / accumulator:</b>	The battery (accumulator) was examined during the inspection .
<b>oil loss:</b>	The vehicle could be checked only limited to oil leaks .
<b>air conditioning:</b>	The air conditioning could not be checked during the inspection . **Due to weather conditions not possible examination.
<b>lighting system:</b>	The Lichtanlage could be considered limited to the tour date .
<b>coupling:</b>	The clutch could be tested only limited within the test drive / pull test .
<b>exhaust System:</b>	The exhaust system has been tested only restricted during the visit .
<b>engine running:</b>	Checking the engine running was limited. Here no audible or visual abnormalities were noted .
<b>shock absorber:</b>	The shock absorber could be tested only restricted during the visit .
<b>transmission:</b>	The transmission could be examined in the context of limited test drive / pull test .
<b>reference:</b>	*

damage



	component	Damage	Rep kind
1.	Sitz Vorne Links	Wear and tear	acceptable
2.	proof of maintenance	Missing	Replace
3.	Tire-fit compressor	Missing	Replace
4.	Rim front - right	Damaged	Replace
5.	Rim rear - right	Damaged	Replace
6.	spoiler	Scratch(es)	Replace
7.	Rear door - left		Refurbish and paint
8.	tailgate		Smart repair
9.	Heckklappenverkleidung Halter Hutablage Rechts	Damaged	Replace
10.	maintenance	Due	Replace

The expert points out that the vehicle in addition to age to the damage listed in the report and may have a high mileage -related wear , as in normal use are inevitable ( small bumps , dents , scratches) and thus is not entitled to change or reduction .

There shall be no liability for any defect and / or remained hidden damage in terms of electronics and mechanics accepted ,\r\nand for fraudulent misrepresentation and concealed defects .



photographic record



front Left



front Right



rear Left



rear Right



inside



inside





trunk



instrument cluster



mileage



filler cap



rims



rims





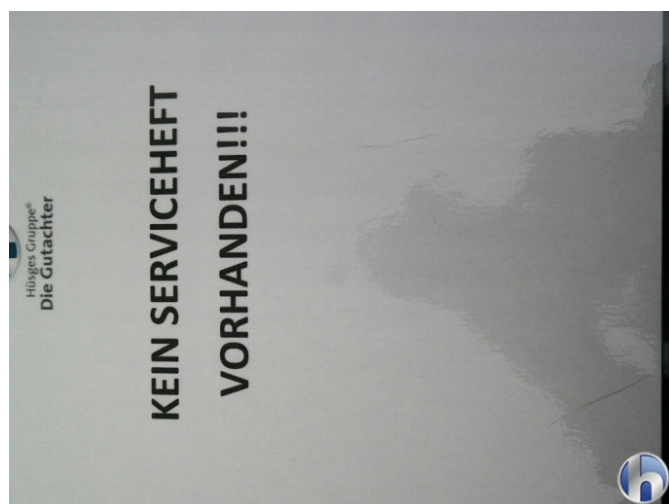
rims



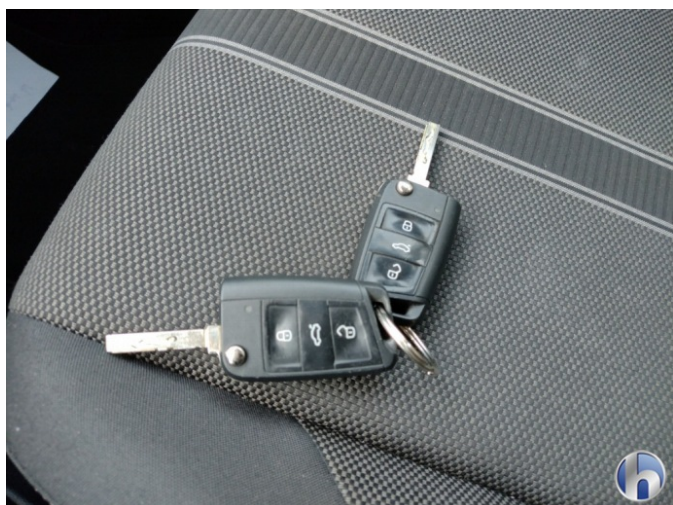
rims



engine compartment



service book



Others



1. Sitz Vorne Links





4. Rim front - right



4. Rim front - right



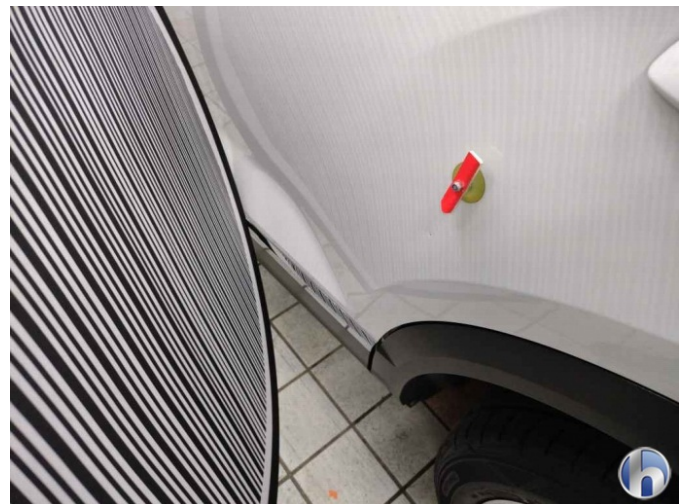
4. Rim front - right



5. Rim rear - right



6. spoiler



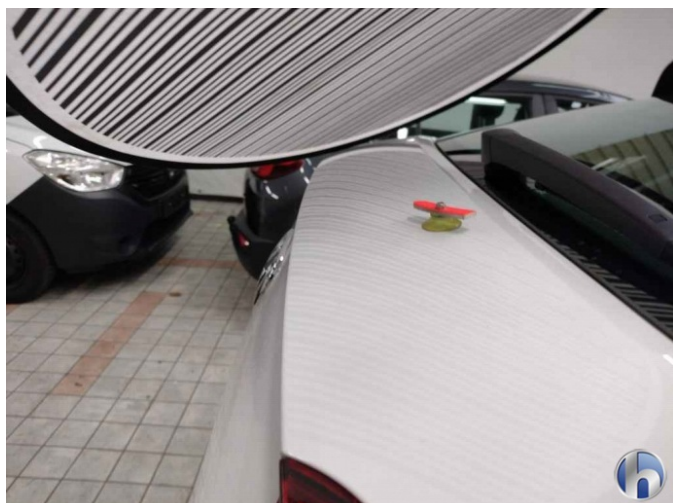
7. Rear door - left



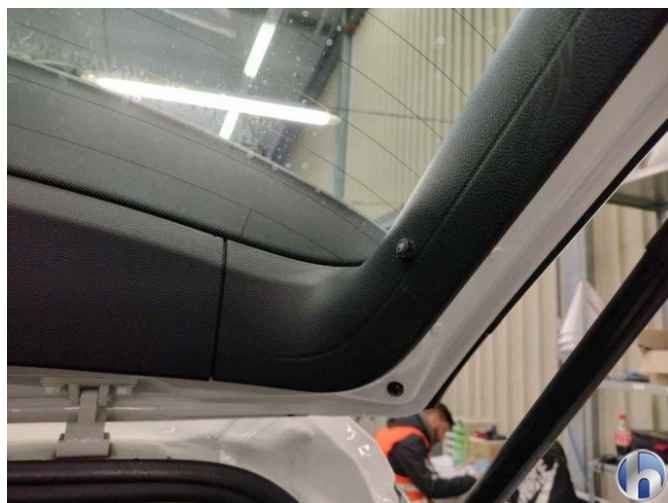
7. Rear door - left



8. tailgate



8. tailgate



9. Heckklappenverkleidung Halter Hutablage Rechts