



Expertise

Protocol number: 41543430  
Order No. / Reference: 25153604  
Inspection date: 16 Sept 2025

Manufacturer: Volkswagen  
VIN: WVGZZZ5NZNW407400

Model: Tiguan 1.4 eHybrid OPF DSG Life



Vehicle details	
Manufacturer / Type / Model / Equipment	
Volkswagen Tiguan 1.4 eHybrid OPF DSG Life	
Vehicle Identification number	WVGZZZ5NZNW407400
Mileage (Read)	66,766 km
First registration	4 Oct 2022
Number of holders	1
Next periodical technical inspection	10/2025
(Report not on hand)	
Power / Engine displacement	110 kw / 1,395 ccm
Fuel type / Cylinder	Hybr.B/E ext. edition / 4
Gearbox / Number of gears	Automatic / 6
Type of drive	Front drive
Type of vehicle	SUV
Colour / colour code	uranograu (I7F)
Doors / Seats	5 / 5
Upholstery type	Cloth
Colour of upholstery	Black-Grey
Re/Import	no
Driving readiness	Roadworthy



Vehicle details

Maintenance booklet / proof	digital proof / complete	Next maintenance in	11,300 km
Last maintenance on / at	10/2024 at 59,252 km		
Key is / should be	2 / 2	FZG documents	ZB#2 (B) was available (copy), ZB#1 (S) was not available
		Letter No.	GJ247975
Previous damage / Accident	None detectable	Repainting	None detectable
Inspection conditions	sufficient	Lifting equipment / pit	yes
Test drive	Not performed	Engine function test	Performed
Driving readiness	Roadworthy		
Manufacturer key number/ type code number	0603 / CNC 00271		
Emission standard	EURO6;WLTP;AP;PI/CI; M, N1 I	Fine dust sticker	
Permitted total weight	2,350 kg	Empty weight	

Tyres

Mounted tyres

#	Tyre size	Type of tyre	Manufacturer	Tread depth
1)	215/65 R17 103H	Winter tyres on Light alloy	Bridgestone	7mm / 7mm
2)	215/65 R17 103H	Winter tyres on Light alloy	Bridgestone	6mm / 6mm

Additional tyres

#	Tyre size	Type of tyre	Manufacturer	Tread depth
1)	215/65 R17 99V	Summer tyres on Light alloy	Hankook	4mm / 4mm
2)	215/65 R17 99V	Summer tyres on Light alloy	Hankook	5mm / 5mm

Replacement

Typ	Tyre size	Type of tyre	Manufacturer	Tread depth
	Tirefit	Expiration date 04/2026		

Legend: Tread depth information for tires on the left is in the first place, for tires on the right is in the second place on the axle in the direction of travel



## Equipment

### Standard equipment

- |  |  |
|--|--|
| <ul style="list-style-type: none"> <li>• Airbag for driver and front passenger including knee airbag on the driver's side</li> <li>• Automatic distance control ACC (DSG)</li> <li>• Brake light, third</li> <li>• Display: Digital Cockpit Pro, multi-color, various info profiles selectable</li> <li>• Parking assistance</li> <li>• Electronic stabilization program and electromechanical brake booster</li> <li>• Electric windows front and rear</li> <li>• Front windscreen in laminated safety glass, heat and sound insulating</li> <li>• Rear window heated</li> <li>• Interior mirror automatically dimming</li> <li>• License plate lighting in LED technology</li> <li>• Instrument cluster with electronic speedometer</li> <li>• Front headrests</li> <li>• Charging cable Mode 3 Type 2, 16 A</li> <li>• LED headlights with LED daytime running lights</li> <li>• Light in the front footwell</li> <li>• Manual headlight range adjustment</li> <li>• Fatigue detection</li> <li>• Non-smoking version</li> <li>• Gasoline particulate filter</li> <li>• Radio "Ready 2 Discover" incl. "Streaming &amp; Internet"</li> <li>• Rain sensor</li> <li>• Wheels: Light alloy (4) "Tulsa" 7 J x 17</li> <li>• Leather gearshift knob</li> <li>• Electromechanical power steering</li> <li>• Seats: Passenger seat backrest completely foldable</li> <li>• Seats: Comfort seats in the front</li> <li>• Seats: Rear seat bench asymmetrically split</li> <li>• Lane keeping assistant "Lane Assist"</li> <li>• socket, 12-volt</li> <li>• Textile floor mats front and rear</li> <li>• Prepared for later activation: Navigation function "Discover Media" including "Streaming &amp; Internet"</li> <li>• Central locking without safe security, with radio remote control, and 2 radio keys</li> </ul> | <ul style="list-style-type: none"> <li>• Airbag: Head airbag system for front and rear passengers including front side airbags</li> <li>• Exterior mirrors electrically adjustable and heated</li> <li>• Roof rails black</li> <li>• tachometer</li> <li>• e-Sound</li> <li>• Electronic parking brake including auto-hold function</li> <li>• Automatic headlight switching with LED daytime running lights</li> <li>• Light Assist high beam control</li> <li>• Pedestrian detection</li> <li>• Transmission: 6-speed DSG</li> <li>• Rear window wiper</li> <li>• ISOFIX anchorage points, also for i-Size child seats</li> <li>• Air Care Climatronic air conditioning system</li> <li>• Headrests (3) rear</li> <li>• Paint finish: Uni</li> <li>• LED reading lights 2 front and 2 rear</li> <li>• Steering wheel: Multifunction steering wheel in leather, with shift paddles</li> <li>• Front center armrest</li> <li>• Mains charging cable for household socket</li> <li>• Emergency call service</li> <li>• Upholstery: Cloth</li> <li>• Radio accessories: 8 speakers</li> <li>• Tire pressure monitoring indicator</li> <li>• Wheels: Tires 215/65 R 17, rolling resistance class A</li> <li>• Drawers under the front seats</li> <li>• Seat belts: Three-point automatic seat belts in the front with height adjustment and belt tensioner</li> <li>• Seats: Lumbar supports in front</li> <li>• Seats: Front seats with height adjustment</li> <li>• Start-stop system with brake energy recovery</li> <li>• Power socket: 2 USB-C ports at the front</li> <li>• First aid kit, warning triangle and safety vest</li> <li>• Electronic immobilizer</li> <li>• Green thermal insulation glazing, side and rear</li> </ul> |
|--|--|

### Extra equipment

- |  |  |
|--|--|
| <ul style="list-style-type: none"> <li>• Tailgate with electric opening and closing, adjustable opening angle</li> <li>• Mesh partition</li> <li>• Wheels: Tire Mobility Set (12 V compressor and tire sealant)</li> </ul> | <ul style="list-style-type: none"> <li>• "Discover Media" navigation system including "Streaming &amp; Internet" (20.3 cm TFT touchscreen - FM radio reception - Dual tuner with phase diversity for optimal radio reception - Radio Data System (RDS) - Radio station logos - MP3 playback - USB-C interface with Apple compatibility - 4 x 20 watts output power - Map with 2D display - 3-way tone control - Telephone interface - Traffic sign recognition - Special destinations - DAB+ digital radio reception)</li> </ul> |
|--|--|



## Brief expert findings

Documents submitted	At the time of the inspection, the registration certificate Part 2 (letter) was available, but the registration certificate Part 1 (certificate) was not. (Copy)
VIN comparison	The vehicle identification number (VIN) was read from the vehicle and its conformity with the submitted documents was verified during the inspection by the undersigned.
Inspection	The inspection conditions were sufficient for the assessment of the vehicle. Lifting equipment and a pit were available for examining the vehicle.
Test drive	No test drive/maneuvering was carried out during the inspection of the vehicle.
Engine function test	An engine test run was performed.
Driving readiness	The vehicle was drivable at the time of inspection.

## Value reducing factors

No.	Component group	Description
1	Vehicle glazing	Windscreen - Stone chips - Smart repair
2	Side panel - rear right side	Sill - Scratch(es) - Smart repair
3	Door - rear left side	Door - Dent / paintcoat damage - Smart repair
4	Front bumper	Front bumper - Scratched - Paint
5	Door - front right side	Door - Scratch(es) - Paint

## Wear and tear

No.	Component group	Description
1	Bonnet	Bonnet - Stone chips - No deduction
2	Rear bumper	Rear bumper - Scratch(es) - No deduction

The vehicle shows signs of wear commensurate with its age and use.

## Order/Scope of order

The order was placed to prepare a sales report for the vehicle described. This includes the following:

- Description of core relevant information about the vehicle
- Documentation of equipment features  
(*Delivery by third-party service providers*)
- Documentation of damage, defects, missing parts
- Documentation of previous damage, unrepaired previous damage, repainting
- a brief visual or functional inspection of the equipment details if possible.  
(*Functional tests of driver assistance systems are not included in the scope of services!*)
- a photo documentation of the vehicle



## Basis for the order

This product is based on the Alphabet Fuhrpark GmbH guidelines for vehicle returns and valuations. The expert makes the explicit findings in each individual case objectively within the framework of the specified standards based on his or her own expertise.

The vehicle inspection takes place in a disassembled state.

Damage or defects that can only be detected during disassembly/diagnosis work or through advanced knowledge remain within the scope of the prognosis risk. An extended risk exists for concealed defects caused by fraudulent deception and not identifiable by the expert.

Damage or defects resulting from normal use or wear and tear of the vehicle will be accepted according to the applicable standard.

There was no explicit identification or monetary consideration of the expected features within the product.

Features which in their nature and severity slightly exceed normal use but do not constitute unacceptable damage will be documented and identified under signs of use if necessary.

Damage or defects which, according to the underlying standard, can no longer be attributed to normal use or wear and tear are listed in the product under "Depreciating Factors".

Depending on the product specification, a monetary ID can be provided. If this takes place, the costs can be 100% d or pro rata depending on the vehicle's age and mileage.

## Previous damages

Apparently, no repaired previous damage could be found on the vehicle.

## Comments

- Für den montierten Radsatz wurde kein Nachweiß erbracht.
- Winterradsatz ist kein Bestandteil des Auslieferungsumfangs.





**Figure 1:** Diagonal front (left)



**Figure 2:** Diagonal front (right)



**Figure 3:** Diagonal rear (left)



**Figure 4:** Diagonal rear (right)



**Figure 5:** Interior - front



**Figure 6:** Interior - rear





Figure 7: Instrument cluster



Figure 8: Instrument panel



Figure 9: Interior 360° view



Figure 10: Cargo area

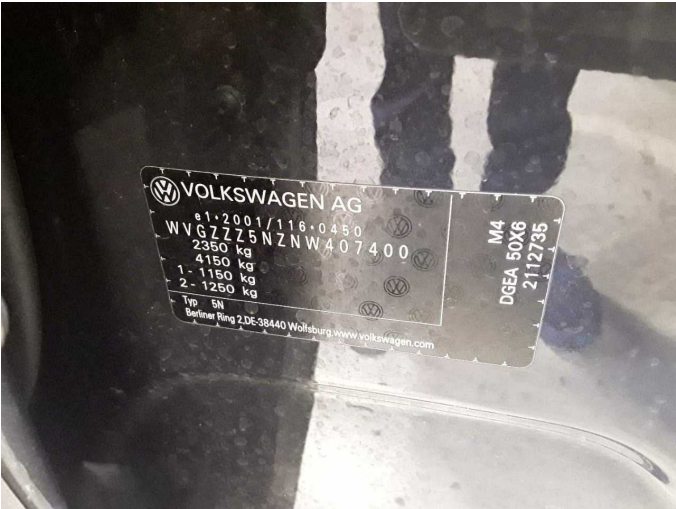


Figure 11: VIN



Figure 12: Mounted tyres



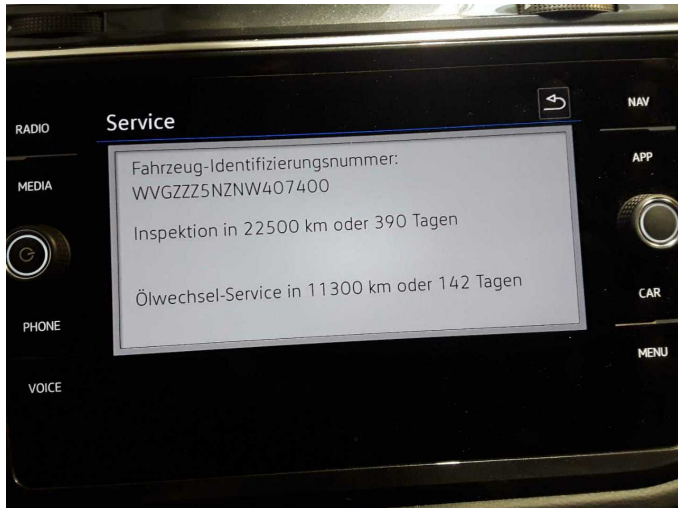


Figure 13: Documents



Figure 14: Documents

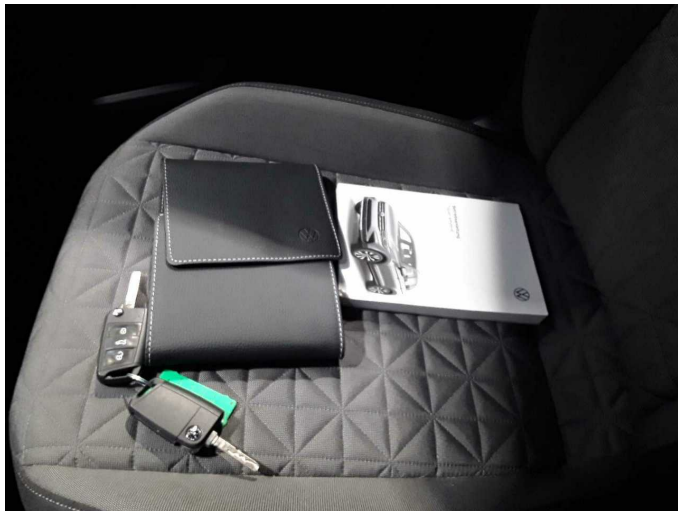


Figure 15: Documents



Figure 16: Additional tyres

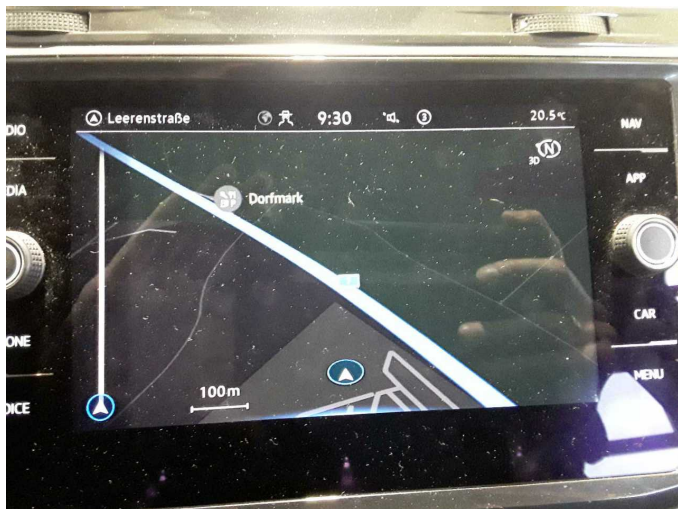


Figure 17: Navigation



Figure 18: Misc.





Figure 19: Misc.



Figure 20: Misc.

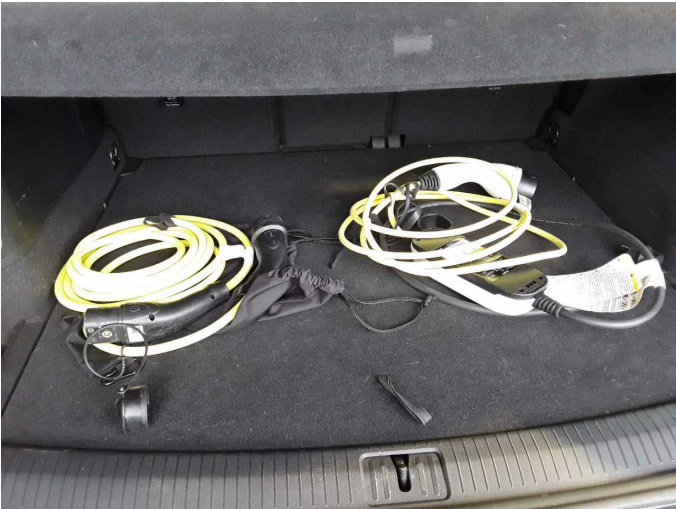


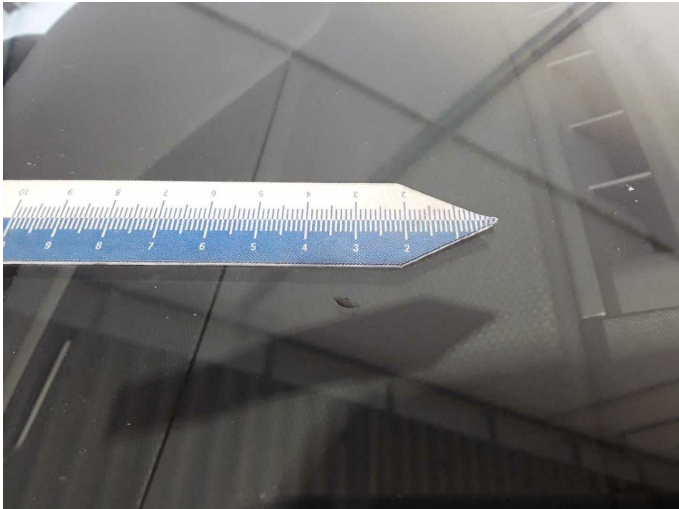
Figure 21: Misc.



Figure 22: Misc.



Damage 1: Vehicle glazing: Windscreen - Stone chips - Smart repair



Damage 1: Vehicle glazing: Windscreen - Stone chips - Smart repair





**Damage 2:** Side panel - rear right side: Sill - Scratch(es) - Smart repair



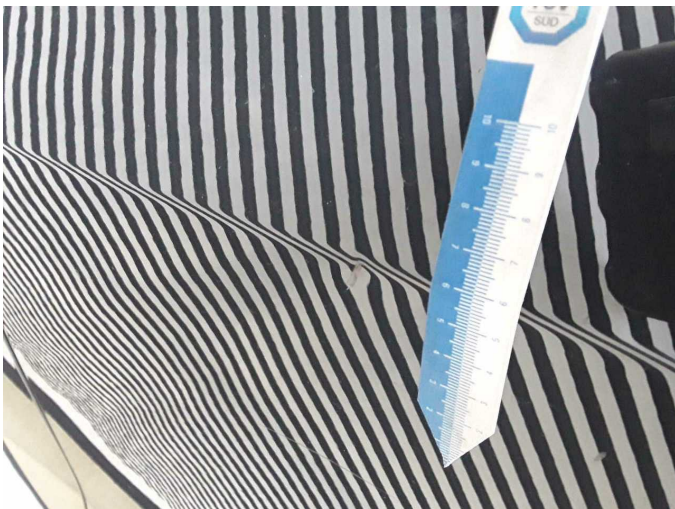
**Damage 2:** Side panel - rear right side: Sill - Scratch(es) - Smart repair



**Damage 3:** Door - rear left side: Door - Dent / paintcoat damage - Smart repair



**Damage 3:** Door - rear left side: Door - Dent / paintcoat damage - Smart repair



**Damage 3:** Door - rear left side: Door - Dent / paintcoat damage - Smart repair



**Damage 4:** Front bumper: Front bumper - Scratched - Paint repair



**Damage 4:** Front bumper: Front bumper - Scratched - Paint



**Damage 5:** Door - front right side: Door - Scratch(es) - Paint



**Damage 5:** Door - front right side: Door - Scratch(es) - Paint





# Wartungshistorie

(gemäß Auftraggeber Informationen)

Fahrgestellnummer: WVGZZZ5NZNW407400

Hersteller / Modell: VOLKSWAGEN VW Tiguan 1.4 eHybrid OPF DSG Life

Datum	KM-Stand	Beschreibung
06.02.2025	63.010	Reparatur Sonstiges
16.10.2024	59.252	Bremsflüssigkeit; Bremsflüssigkeit ern; Getriebeöl ern/prüfen; Regelwartungsdienst; Wartung Sonstiges; Zündkerzen ern
23.08.2024	53.517	Motoröl b. Wartung; Ölfilter ern; Ölwechsel; Wartung Sonstiges
14.05.2024	41.144	Motoröl b. Wartung; Ölfilter ern; Ölwechsel; Wartung Sonstiges
18.12.2023	31.926	Motoröl b. Wartung; Ölfilter ern; Regelwartungsdienst; Wartung Sonstiges
14.06.2023	11.596	Motoröl b. Wartung; Ölfilter ern; Ölwechsel; Wartung Sonstiges