



Expertise

Protocol number: 41526284
Order No. / Reference: 25176309
Inspection date: 16 Sept 2025

Manufacturer: Volkswagen

Model: Tiguan Allspace 2.0 TDI SCR 4Motion DSG R-Line

VIN: WVGZZZ5NZNM118010



Vehicle details	
Manufacturer / Type / Model / Equipment	
Volkswagen Tiguan Allspace 2.0 TDI SCR 4Motion DSG R-Line	
Vehicle Identification number	WVGZZZ5NZNM118010
Mileage (Read)	173,437 km
First registration	26 Aug 2022
Number of holders	1
Next periodical technical inspection	08/2027
(Report not on hand)	
Power / Engine displacement	147 kw / 1,968 ccm
Fuel type / Cylinder	Diesel / 4
Gearbox / Number of gears	Automatic / 7
Type of drive	All-wheel drive
Type of vehicle	SUV
Colour / colour code	Deep Black Perleffekt (C9X)
Doors / Seats	5 / 5
Upholstery type	Leather
Colour of upholstery	Black-Grey
Re/Import	no
Driving readiness	Roadworthy



Vehicle details

Maintenance booklet / proof	digital proof / complete	Next maintenance in	8,400 km
Last maintenance on / at	05/2025 at 151,838 km		
Key is / should be	2 / 2	FZG documents	ZB#2 (B) was available (copy), ZB#1 (S) was not available
		Letter No.	GJ216006
Previous damage / Accident	Detectable	Repainting	None detectable
Inspection conditions	sufficient	Lifting equipment / pit	yes
Test drive	Not performed	Engine function test	Performed
Driving readiness	Roadworthy		
Manufacturer key number/ type code number	0603 / CLE 02619		
Emission standard	EURO6;WLTP;AP;PI/CI; M, N1 I	Fine dust sticker	
Permitted total weight	2,380 kg	Empty weight	

Tyres

Mounted tyres

#	Tyre size	Type of tyre	Manufacturer	Tread depth
1)	255/45 R19 104Y	Summer tyres on Light alloy	Continental	4mm / 4mm
2)	255/45 R19 104Y	Summer tyres on Light alloy	Continental	5mm / 5mm

Additional tyres

#	Tyre size	Type of tyre	Manufacturer	Tread depth
1)	235/55 R18 100H	Winter tyres on Light alloy	Continental	3mm / 3mm
2)	235/55 R18 100H	Winter tyres on Light alloy	Continental	6mm / 6mm

Legend: Tread depth information for tires on the left is in the first place, for tires on the right is in the second place on the axle in the direction of travel



Equipment

Standard equipment

- Storage compartments in the roof console
- Airbag, head airbag system including front side airbags
- Airbag: Side airbags for the outer seats of the 2nd row
- App-Connect including App-Connect Wireless for Apple CarPlay and Android Auto
- Exterior mirrors electrically adjustable and heated
- Hill descent assistant
- Chrome applications on mirror adjustment, window lifter switches, door handles
- Decorative inlays "Carbon Grey"
- Display: Digital Cockpit Pro, multi-color, various info profiles selectable
- Electronic parking brake including auto-hold function
- Driving assistant "Travel Assist" and lane keeping assistant "Lane Assist"
- Driving profile selection
- Front windscreen in laminated safety glass, heat and sound insulating
- Luggage compartment floor height adjustable in 2 steps
- Tailgate with electric opening and closing, adjustable opening angle
- Rear spoiler in R-styling
- ISOFIX anchorage points, also for i-Size child seats
- Air Care Climatronic air conditioning system
- Front headrests
- LED headlights with bad weather light and cornering light
- Reading lights 2 front and 2 rear
- Light in the front footwell
- Front center armrest
- Non-smoking version
- Emergency call service
- Pedals in stainless steel
- Proactive occupant protection system in conjunction with "Front Assist"
- Radio accessories: Digital radio reception DAB+
- Tire pressure monitoring indicator
- Wheels: Tire Mobility Set no longer available
- Wheels: Light alloy (4) "Valencia" 8.5 J x 19, Volkswagen R
- Drawers under the front seats
- Seat belts: Three-point automatic seat belts in the front with height adjustment and belt tensioner
- Seats: Top comfort seats in the front
- Seats: Front seats with height adjustment
- socket, 12-volt
- Body-colored bumpers with "R-Line" styling
- Textile floor mats front and rear
- Prepared for "We Connect" and "We Connect Plus"
- Electronic immobilizer
- Airbag for driver and front passenger including knee airbag on the driver's side
- Permanent all-wheel drive 4MOTION
- Automatic distance control ACC "stop & go" with speed limiter
- Exterior mirror housing painted silver
- Brake light, third
- Chrome strips on the side windows
- Roof rails silver anodized
- diesel particulate filter
- Parking assistance
- Front door sills in aluminum, with "R-Line" logo
- Electronic stabilization program with counter-steering support
- Automatic headlight switching, with daytime running lights
- Electric windows front and rear
- Pedestrian detection
- Luggage compartment lighting
- Transmission: 7-speed DSG
- Rear window heated
- Rear window wiper with interval control
- Interior mirror automatically dimming
- License plate lighting in LED technology
- Headrests (3) rear
- LED matrix headlights - IQ.LIGHT
- Steering wheel: Multifunction sports steering wheel in leather, heated, with shift paddles
- Make-up mirror illuminated in the sun visors
- Fatigue detection
- Emergency braking assistant "Front Assist"
- Package: Winter
- Upholstery: Fabric inner bolsters in "ArtVelours"
- Radio
- Radio accessories: 8 speakers
- Rain sensor
- Wheels: AirStop tires 255/45 R 19, rolling resistance optimized
- Leather gearshift knob
- Electromechanical power steering
- Seats: Passenger seat backrest completely foldable
- Seats: Lumbar supports in front
- Seats: Heated front seats
- Start-stop system with brake energy recovery
- Power socket: 2 USB-C ports at the front
- Telephone interface
- First aid kit, warning triangle and safety vest
- Prepared for later activation: Navigation function "Discover Media" including "Streaming & Internet"
- Central locking without safe security, with radio remote control, and 2 radio keys



- Green thermal insulation glazing, side and rear

Extra equipment

- Anti-theft alarm system with safe security (anti-theft alarm system with interior monitoring, backup horn and tow-away protection, central locking with safe security, radio remote control and 2 radio folding keys)
- Paint finish: Metallic in conjunction with R-Line "Black Style"
- Finish: pearl effect
- Navigation system "Discover Media" including "Streaming & Internet"
- Package: "Easy Open & Close" with Safe Security ("Easy Open & Close" - tailgate with sensor-controlled opening and closing, with remote unlocking - keyless locking and starting system "Keyless Access" with Safe Security)
- Package: "Black Style" design package (four "Valencia" alloy wheels 8.5 J x 19 in black, Volkswagen R, 255/45 R 19 Airstop tires, optimized for low rolling resistance; black exterior mirror housings; tinted rear side windows and rear window, approximately 90% light-absorbing; body-colored bumpers with "R-Line" styling; black trim strips)
- Package: "Vienna" leather package, Volkswagen R, including front seats with memory function (electrically adjustable, folding, heated exterior mirrors with memory function and ambient lighting - electrically adjustable front lumbar support - leather seat upholstery - electrically adjustable front seats with memory function; with comfort entry on the driver's side - front seats with active climate control)
- Panoramic tilt/slide roof with rear panoramic roof (2 LED reading lights at the front and 2 at the rear - panoramic tilt/slide roof with rear panoramic roof)
- Auxiliary heating and ventilation (with radio remote control and timer)
- Area View (including rear view camera)
- Chassis: Adaptive Chassis Control (DCC) (allows the driver to choose between comfortable, sporty, or normal chassis settings at the touch of a button - continuously reacts to different driving situations and takes braking, steering, and acceleration into account - Adaptive Chassis Control (DCC) including driving profile selection - ECO function)
- Mesh partition
- Package: Business Premium (DSG) (2 USB-C ports in the front, 1 USB-C charging port on the rear center console - Head-up display - Heated leather multifunction steering wheel with shift paddles - Automatically heated front windshield washer jets - Voice control - "Comfort" telephone interface with inductive charging function - Heated front seats)
- Package: Driver Assistance Package "Plus" (Travel Assist, Lane Assist, and Emergency Assist - Park Assist including parking aid - Proactive occupant protection system in conjunction with Front Assist - Side Assist lane change assistant and rear traffic exit assistant - Traffic sign recognition)
- Package: Winter additionally with heated outer rear seats (Air Care Climatronic air conditioning with active combi filter, rear controls and 3-zone temperature control - automatically heated front windscreen washer nozzles - heated front seats and outer rear seats)
- Parking steering assistant "Park Assist" including parking aid
- Radio accessories: Harman Kardon sound system (8+1 speakers - 480 watts total power - 16-channel digital amplifier - subwoofer)

Brief expert findings

Documents submitted	At the time of the inspection, the registration certificate Part 2 (letter) was available, but the registration certificate Part 1 (certificate) was not. (Copy)
VIN comparison	The vehicle identification number (VIN) was read from the vehicle and its conformity with the submitted documents was verified during the inspection by the undersigned.
Inspection	The inspection conditions were sufficient for the assessment of the vehicle. Lifting equipment and a pit were available for examining the vehicle.
Test drive	No test drive/maneuvering was carried out during the inspection of the vehicle.
Engine function test	An engine test run was performed.
Driving readiness	The vehicle was drivable at the time of inspection.

Value reducing factors

No.	Component group	Description
1	Door - rear left side	Door - dent(s) - Smooth repair work
2	Side panel - rear left side	Side panel - dent(s) - Smooth repair work
3	Rear bumper	Rear bumper (Folie hat sich gelöst.) - Scratch(es) - Smart repair
4	Front bumper	Front bumper - Scratch(es) - Repair and paint



No.	Component group	Description
5	Vehicle glazing	Windscreen - Stone chips - Replace
6	Bonnet	Bonnet - Damaged - Replace

Wear and tear

No.	Component group	Description
1	Headlight	Headlight - right side - Scratch(es) - No deduction
2	Headlight	Headlight - left side - Scratch(es) - No deduction
3	Trim / covers	Floor mats - Scratched - No deduction
4	Door - rear right side	Brightware - lower - Scratch(es) - No deduction
5	Door - front right side	Brightware - lower - Scratch(es) - No deduction
6	Body	Body - Scratch(es) - No deduction
7	2nd wheel set	2 tyres - Does not meet the leasing specifications - No deduction
8	2nd wheel set	1 alloy rim - Scratched - No deduction
9	Boot lid / rear door	Boot lid - Scratch(es) - No deduction

The vehicle shows signs of wear commensurate with its age and use.

Order/Scope of order

The order was placed to prepare a sales report for the vehicle described. This includes the following:

- Description of core relevant information about the vehicle
- Documentation of equipment features
(*Delivery by third-party service providers*)
- Documentation of damage, defects, missing parts
- Documentation of previous damage, unrepaired previous damage, repainting
- a brief visual or functional inspection of the equipment details if possible.
(*Functional tests of driver assistance systems are not included in the scope of services!*)
- a photo documentation of the vehicle

Basis for the order

This product is based on the Alphabet Fuhrpark GmbH guidelines for vehicle returns and valuations. The expert makes the explicit findings in each individual case objectively within the framework of the specified standards based on his or her own expertise.

The vehicle inspection takes place in a disassembled state.

Damage or defects that can only be detected during disassembly/diagnosis work or through advanced knowledge remain within the scope of the prognosis risk. An extended risk exists for concealed defects caused by fraudulent deception and not identifiable by the expert.

Damage or defects resulting from normal use or wear and tear of the vehicle will be accepted according to the applicable standard.

There was no explicit identification or monetary consideration of the expected features within the product.

Features which in their nature and severity slightly exceed normal use but do not constitute unacceptable damage will be documented and identified under signs of use if necessary.

Damage or defects which, according to the underlying standard, can no longer be attributed to normal use or wear and tear are listed in the product under "Depreciating Factors".

Depending on the product specification, a monetary ID can be provided. If this takes place, the costs can be 100% d or pro rata depending on the vehicle's age and mileage.



Comments

- Für den montierten Radsatz wurde kein Nachweis erbracht.
- Winterradsatz ist kein Bestandteil des Auslieferungsumfangs.



Figure 1: Diagonal front (left)



Figure 2: Diagonal front (right)



Figure 3: Diagonal rear (left)



Figure 4: Diagonal rear (right)



Figure 5: Interior - front



Figure 6: Interior - rear



Figure 7: Instrument cluster



Figure 8: Instrument panel



Figure 9: Interior 360° view



Figure 10: Cargo area



Figure 11: VIN



Figure 12: Mounted tyres



Figure 13: Documents

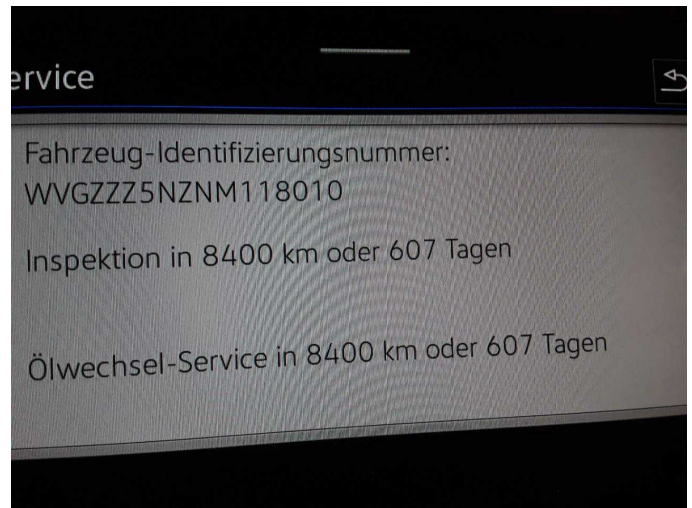


Figure 14: Documents



Figure 15: Additional tyres

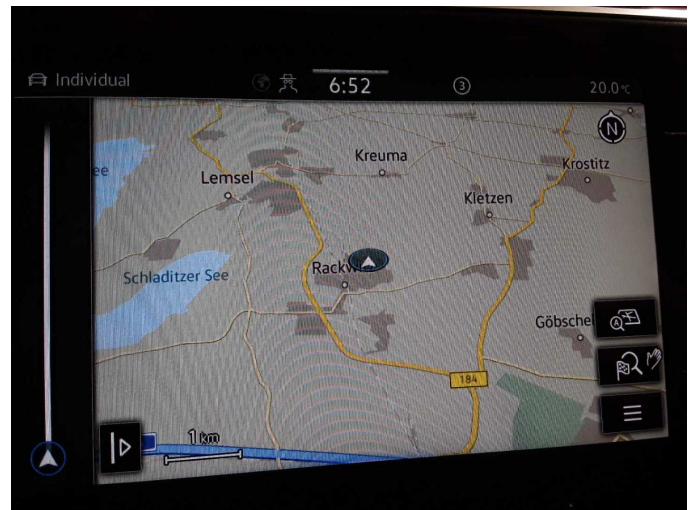


Figure 16: Navigation



Figure 17: Misc.



Figure 18: Misc.



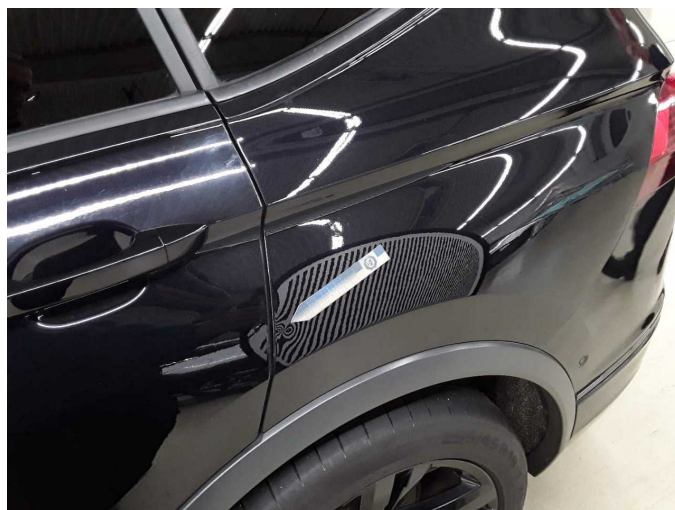
Damage 1: Door - rear left side: Door - dent(s) - Smooth repair work



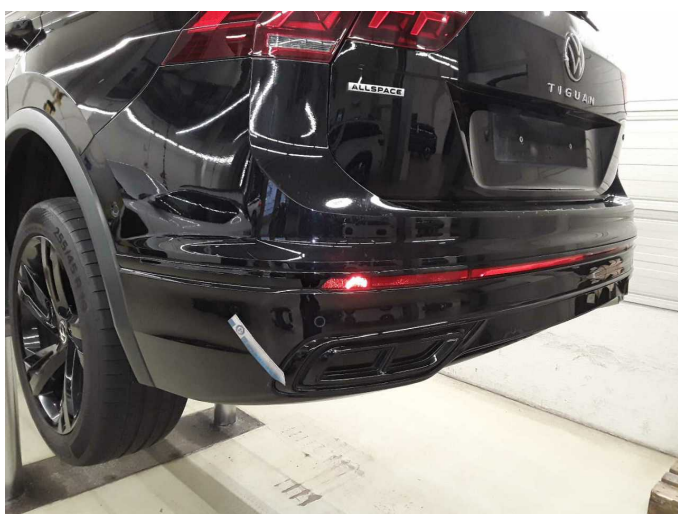
Damage 1: Door - rear left side: Door - dent(s) - Smooth repair work



Damage 2: Side panel - rear left side: Side panel - dent(s) - Smooth repair work



Damage 2: Side panel - rear left side: Side panel - dent(s) - Smooth repair work



Damage 3: Rear bumper: Rear bumper (Folie hat sich gelöst.) - Scratch(es) - Smart repair



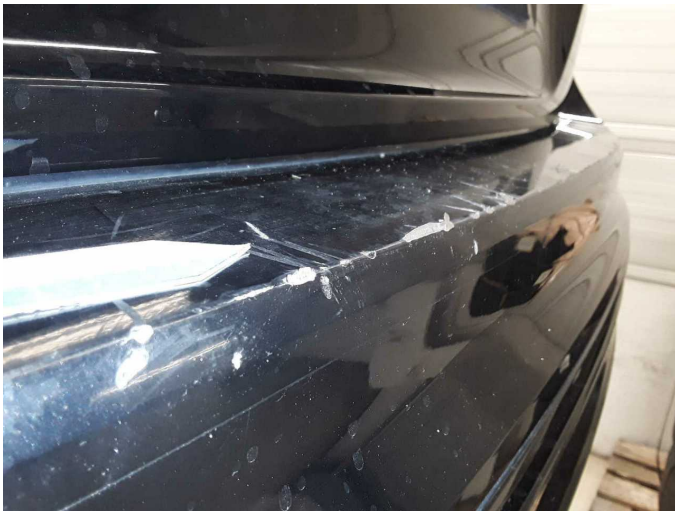
Damage 3: Rear bumper: Rear bumper (Folie hat sich gelöst.) - Scratch(es) - Smart repair



Damage 3: Rear bumper: Rear bumper (Folie hat sich gelöst.) - Scratch(es) - Smart repair



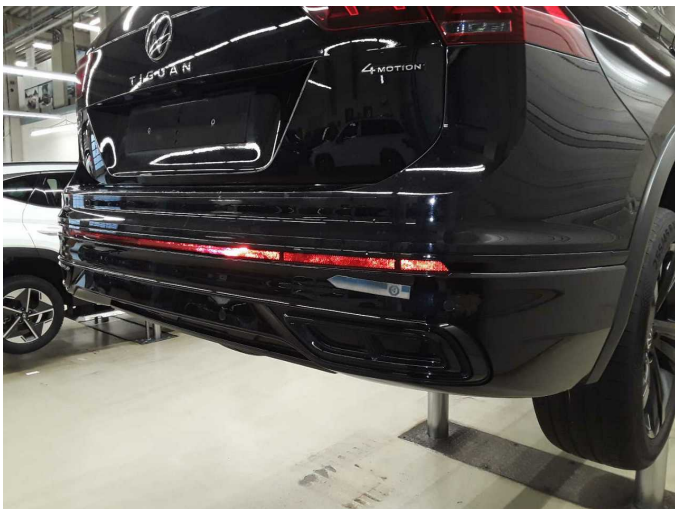
Damage 3: Rear bumper: Rear bumper (Folie hat sich gelöst.) - Scratch(es) - Smart repair



Damage 3: Rear bumper: Rear bumper (Folie hat sich gelöst.) - Scratch(es) - Smart repair



Damage 3: Rear bumper: Rear bumper (Folie hat sich gelöst.) - Scratch(es) - Smart repair



Damage 3: Rear bumper: Rear bumper (Folie hat sich gelöst.) - Scratch(es) - Smart repair



Damage 3: Rear bumper: Rear bumper (Folie hat sich gelöst.) - Scratch(es) - Smart repair



Damage 4: Front bumper: Front bumper - Scratch(es) - Repair and paint



Damage 4: Front bumper: Front bumper - Scratch(es) - Repair and paint



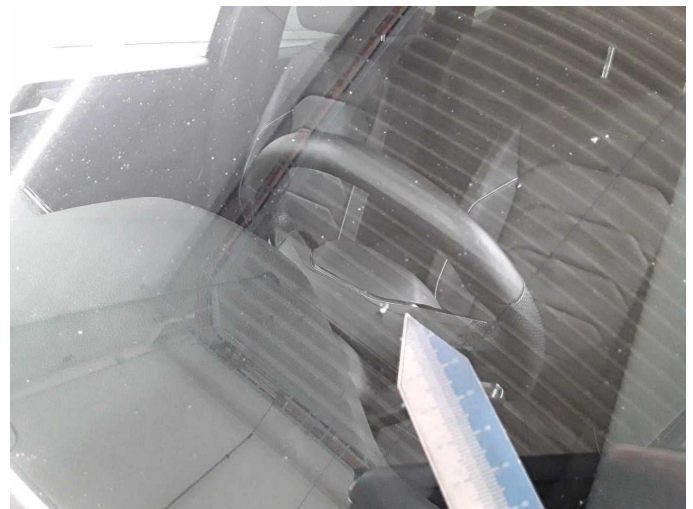
Damage 4: Front bumper: Front bumper - Scratch(es) - Repair and paint



Damage 4: Front bumper: Front bumper - Scratch(es) - Repair and paint



Damage 5: Vehicle glazing: Windscreen - Stone chips - Replace



Damage 5: Vehicle glazing: Windscreen - Stone chips - Replace



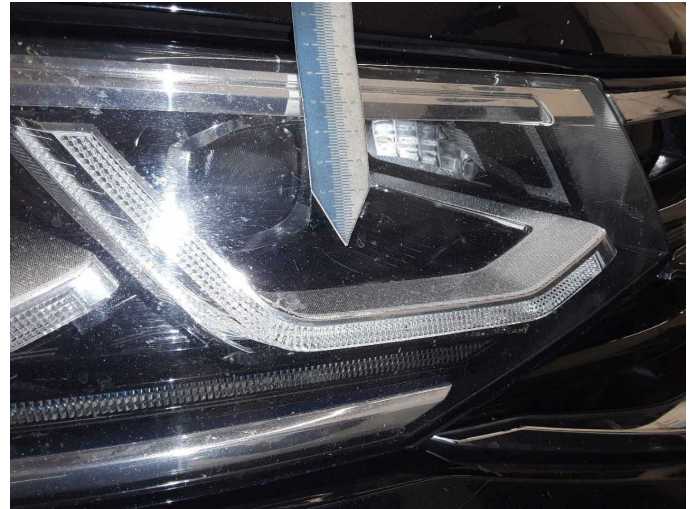
Damage 5: Vehicle glazing: Windscreen - Stone chips - Replace



Wear and tear 1: Headlight: Headlight - right side - Scratch(es) - No deduction



Wear and tear 1: Headlight: Headlight - right side - Scratch(es) - No deduction



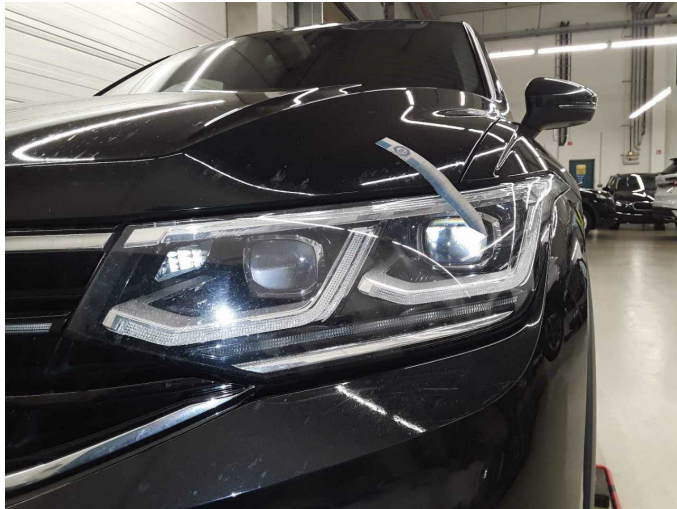
Wear and tear 1: Headlight: Headlight - right side - Scratch(es) - No deduction



Wear and tear 2: Headlight: Headlight - left side - Scratch(es) - No deduction



Wear and tear 2: Headlight: Headlight - left side - Scratch(es) - No deduction



Wear and tear 2: Headlight: Headlight - left side - Scratch(es) - No deduction



Wear and tear 3: Trim / covers: Floor mats - Scratched - No deduction



Wear and tear 4: Door - rear right side: Brightware - lower - Scratch(es) - No deduction



Wear and tear 4: Door - rear right side: Brightware - lower - Scratch(es) - No deduction



Wear and tear 5: Door - front right side: Brightware - lower - Scratch(es) - No deduction



Wear and tear 5: Door - front right side: Brightware - lower - Scratch(es) - No deduction



Wear and tear 8: 2nd wheel set: 1 alloy rim - Scratched - No deduction



Wear and tear 8: 2nd wheel set: 1 alloy rim - Scratched - No deduction



Wartungshistorie

(gemäß Auftraggeber Informationen)

Fahrgestellnummer: WVGZZZ5NZNM118010
Hersteller / Modell: VOLKSWAGEN VW Tiguan Allspace 2.0 TDI SCR 4Motion DSG R-Line

Datum	KM-Stand	Beschreibung
08.08.2025	166.023	HU + AU
22.05.2025	151.838	Motoröl b. Wartung; Ölfilter ern; Regelwartungsdienst; Wartung Sonstiges
03.12.2024	122.418	Bremse Sonstiges; Bremsflüssigkeit; Bremsflüssigkeit ern; Bremsklötze hinten; Bremsklötze vorne; Bremsscheiben hinten; Bremsscheiben vorne; Getriebeöl ern/prüfen; Motoröl b. Wartung; Ölfilter ern; Ölwechsel - Hinterachse; Regelwartungsdienst; Reparatur Sonstiges; Wartung Sonstiges
21.05.2024	93.190	Kraftstofffilter ern; Luftfiltereinsatz ern; Motoröl b. Wartung; Ölfilter ern; Regelwartungsdienst; Systemtest/Eigendiagnose; Wartung Sonstiges
09.11.2023	60.148	Bremse Sonstiges; Bremsklötze hinten; Bremsklötze vorne; Motoröl b. Wartung; Ölfilter ern; Regelwartungsdienst; Wartung Sonstiges
29.03.2023	27.748	Motoröl b. Wartung; Ölfilter ern; Regelwartungsdienst; Wartung Sonstiges