



Expertise

Protocol number: 39831665  
Order No. / Reference: 24692594  
Inspection date: 21 May 2025

Manufacturer: Volkswagen

Model: Tiguan Allspace 2.0 TDI SCR 4Motion DSG Highline

VIN: WVGZZZ5NZMM146460



Vehicle details	
Manufacturer / Type / Model / Equipment	
Volkswagen Tiguan Allspace 2.0 TDI SCR 4Motion DSG Highline	
Vehicle Identification number	WVGZZZ5NZMM146460
Mileage (Read)	137,627 km
First registration	12 Oct 2021
Number of holders	1
Next periodical technical inspection	09/2026
(Report not on hand)	
Power / Engine displacement	147 kw / 1,968 ccm
Fuel type / Cylinder	Diesel / 4
Gearbox / Number of gears	Automatic / 7
Type of drive	All-wheel drive
Type of vehicle	SUV
Colour / colour code	Platinumgrey Metallic (D7X)
Doors / Seats	5 / 5
Upholstery type	Cloth / leather combination
Colour of upholstery	Black-Grey
Re/Import	no
Driving readiness	Roadworthy



## Vehicle details

<b>Maintenance booklet / proof</b>	digital proof / complete	<b>Next maintenance in</b>	8,500 km
<b>Last maintenance on / at</b>	04/2025 at 137,074 km		
<b>Key is / should be</b>	2 / 2	<b>FZG documents</b>	ZB#2 (B) was available (copy), ZB#1 (S) was not available
		<b>Letter No.</b>	GE491977
<b>Previous damage / Accident</b>	Detectable	<b>Repainting</b>	Detectable
<b>Inspection conditions</b>	Sufficient	<b>Lifting equipment / pit</b>	yes
<b>Test drive</b>	Not performed	<b>Engine function test</b>	Performed
<b>Driving readiness</b>	Roadworthy		
<b>Manufacturer key number/ type code number</b>	0603 / CLD 01868		
<b>Emission standard</b>	EURO6;WLTP;AP;PI/CI; M, N1 I	<b>Fine dust sticker</b>	
<b>Permitted total weight</b>	2,390 kg	<b>Empty weight</b>	

## Tyres

### Mounted tyres

#	Tyre size	Type of tyre	Manufacturer	Tread depth
1)	255/40 R20 101V	summer tires (with run-flat tires) on Light alloy	Pirelli	7mm / 7mm
2)	255/40 R20 101V	summer tires (with run-flat tires) on Light alloy	Continental	5mm / 5mm

### Additional tyres

#	Tyre size	Type of tyre	Manufacturer	Tread depth
1)	235/55 R18 100H	Winter tyres on Light alloy	Continental	3mm / 4mm
2)	235/55 R18 100H	Winter tyres on Light alloy	Continental	7mm / 7mm

**Legend: Tread depth information for tires on the left is in the first place, for tires on the right is in the second place on the axle in the direction of travel**

## Equipment

### Standard equipment

- 2 USB-C ports at the front
- Airbag for driver and front passenger including knee airbag on the driver's side
- Automatic distance control ACC up to 210 km/h "stop&go" and emergency braking assistant Front Assist (DSG)
- Exterior mirror housing painted silver
- Chrome applications on mirror adjustment, window lifter switches, door handles
- Anti-theft alarm system
- Dual-tone horn
- Electronic parking brake including auto-hold function
- Automatic headlight switching, with daytime running lights
- Driving profile selection
- Light Assist high beam control
- Pedestrian detection
- Luggage compartment cover
- Luggage compartment lid with sensor-controlled opening
- Rear window heated
- Interior mirror automatically dimming
- Air Care Climatronic air conditioning system
- Headrests (3) rear
- LED headlights for low and high beam, with LED daytime running lights
- Dynamic headlight range adjustment
- Multifunction display "Premium"
- Fog lights and cornering lights
- Emergency call service
- Package: Winter 1
- Radio "Ready 2 Discover" incl. "Streaming & Internet"
- Radio accessories: Digital radio reception DAB+
- Tire pressure monitoring indicator
- taillights in LED technology, dark red
- Keyless locking and starting system "Keyless Access" with safe security
- Seat belts: Three-point automatic seat belts in the front with height adjustment and belt tensioner
- Seats: Lumbar supports in front
- Seats: Top comfort seats in the front
- Lane keeping assistant "Lane Assist"
- socket, 12-volt
- Telephone interface
- First aid kit, warning triangle and safety vest
- Electronic immobilizer
- Storage compartments in the roof console
- Airbag, head airbag system including front side airbags
- permanent 4MOTION all-wheel drive
- Exterior mirror on driver's side aspherical
- Exterior mirrors electrically adjustable, folding and heated
- Hill descent assistant
- Chrome strips on the side windows
- Roof rails silver anodized
- diesel particulate filter
- Parking assistance
- Electronic stabilization program with counter-steering support
- Electric windows front and rear
- Front windscreen in laminated safety glass, heat and sound insulating
- Luggage compartment lighting
- Transmission: 7-speed DSG
- Rear window wiper with interval control
- License plate lighting in LED technology
- Instrument cluster with electronic speedometer
- Front headrests
- Steering wheel: Multifunction steering wheel in leather, with shift paddles
- Front center armrest
- Fatigue detection
- Non-smoking version
- Package: Ambient package for off-road package
- Upholstery: microfleece
- Radio accessories: 8 speakers
- Rain sensor
- Wheels: Tire Mobility Set no longer available
- Leather gearshift knob
- Drawers under the front seats
- Power steering
- Seats: Passenger seat backrest completely foldable
- Seats: Folding tables on the backs of the front seats
- Seats: Rear seat bench asymmetrically split
- Seats: Front seats with height adjustment
- Start-stop system with brake energy recovery
- bumper in body color with chrome strip
- Textile floor mats front and rear
- Prepared for "We Connect" and "We Connect Plus"
- Green thermal insulation glazing, side and rear

### Extra equipment



- Active Lighting System (dynamic high beam control "Dynamic Light Assist" - LED headlights with LED daytime running lights and cornering lights)
- Folding trailer hitch (electric release)
- Chassis: Sports suspension
- Paint finish: Metallic in V. with R-Line "Black Style"
- "Discover Media" navigation system including "Streaming & Internet" (8 speakers, 20.3 cm touchscreen, dual tuner with phase diversity for optimal radio reception, Radio Data System (RDS), MP3 playback, USB-C interface with Apple compatibility, 4 x 20 watt output, 2D map display, phone interface, traffic sign recognition, points of interest, DAB+ digital radio reception)
- Package: R-Line "Black Style", Volkswagen R (DSG) (4 LM "Sebring" 8.5 J x 19 black AirStop tires 255/45 R 19 wheel lock with extended anti-theft protection, exterior mirror housing, roof rails, roof liner and black trim, rear spoiler in R-styling, front center armrest, fog lights, cornering lights, pedals and footrest in stainless steel, R-Line multifunction sports steering wheel in leather, shift paddles, darkened side windows at the rear and rear windows, seat center panel in "Race" fabric, inner bolsters in microfiber, comfort bumper, textile floor mats front/rear, top comfort seats at the front, door trim in foam film)
- Voice control
- Area View (including rear view camera)
- Trailer maneuvering assistant "Trailer Assist" including "Park Assist" and "Rear View" reversing camera (provides the driver with support when maneuvering with a trailer. The maneuvering direction is set via the mirror adjustment switch, and the vehicle steers automatically. Park Assist: automatically steers the vehicle into parallel and perpendicular parking spaces and also parks out of parallel parking spaces. Rear View reversing camera: displays the rear of the vehicle in real time on the radio/navigation system display.
- Mesh partition
- Package: "Business Premium" package (2 USB-C interfaces at the front, 1 USB-C charging socket on the rear center console - App-Connect incl. App-Connect Wireless for Apple CarPlay and Android Auto - Digital Cockpit Pro, multi-colored, various info profiles selectable - Automatically heated windshield washer nozzles at the front - Headlight cleaning system - Voice control - "Comfort" telephone interface with inductive charging function - Heated front seats)
- Panoramic tilt/sliding roof with panoramic roof at the rear (2 LED reading lights at the front and 2 at the rear - panoramic tilt/sliding roof with panoramic roof at the rear)
- Wheels: Light alloy (4) "Suzuka" 8.5 J x 20 in black, Volkswagen R (4 light alloy wheels "Suzuka" 8.5 J x 20 in black - AirStop tires 255/40 R 20)

## Brief expert findings

Documents submitted	At the time of the inspection, the registration certificate part 2 (letter) was available, but the registration certificate part 1 (certificate) was not available. (Copy)
VIN comparison	The vehicle identification number (VIN) was read and the undersigned verified that it matched the documents submitted during the inspection.
Inspection	The inspection conditions were sufficient for the assessment of the vehicle. Lifting equipment and a pit were available for examining the vehicle.
Test drive	No test drive/maneuvering was carried out during the inspection of the vehicle.
Engine function test	An engine test run was performed.
Driving readiness	The vehicle was drivable at the time of inspection.

## Value reducing factors

No.	Component group	Description
1	Door - rear right side	Door edge - Scratch(es) - Smart repair
2	Door - rear left side	Door edge - Scratch(es) - Smart repair
3	Door - rear right side	Door - dent(s) - Smooth repair work
4	Front bumper	Front bumper - Scratch(es) - Smart repair
5	Boot lid / rear door	Boot lid - Paint defect - Smart repair
6	Wheel / tyres	Alloy rim - rear right side - Scratch(es) - Repair and paint
7	Wheel / tyres	Alloy rim - rear left side - Scratch(es) - Repair and paint
8	Wheel / tyres	Alloy rim - front right side - Scratch(es) - Repair and paint

## Wear and tear



No.	Component group	Description
1	Side panel - rear left side	Sill - Dent / paintcoat damage - No deduction

The vehicle shows signs of wear commensurate with its age and use.

## Previous damages

No.	Previous damage	Extent of damage (Net)
1	Rear, Provided by user / customer, from 7 Oct 2024	1.126,62 €

## Repainting

No.	Repainting
1	Boot lid / rear door, Professionally carried out, Invoice of repair done Non-existent

## Paint coat thickness measurement

Boot lid / rear door	230 µm
----------------------	--------

## Order/Scope of order

The order was placed to prepare a sales report for the vehicle described. This includes the following:

- Description of core relevant information about the vehicle
- Documentation of equipment features  
(Delivery by third-party service providers)
- Documentation of damage, defects, missing parts
- Documentation of previous damage, unrepaired previous damage, repainting
- a brief visual or functional inspection of the equipment details if possible.  
(Functional tests of driver assistance systems are not included in the scope of services!)
- a photo documentation of the vehicle

## Basis for the order

This product is based on the Alphabet Fuhrpark GmbH guidelines for vehicle returns and valuations. The expert makes the explicit findings in each individual case objectively within the framework of the specified standards based on his or her own expertise.

The vehicle inspection takes place in a disassembled state.

Damage or defects that can only be detected during disassembly/diagnosis work or through advanced knowledge remain within the scope of the prognosis risk. An extended risk exists for concealed defects caused by fraudulent deception and not identifiable by the expert.

Damage or defects resulting from normal use or wear and tear of the vehicle will be accepted according to the applicable standard.

There was no explicit identification or monetary consideration of the expected features within the product.

Features which in their nature and severity slightly exceed normal use but do not constitute unacceptable damage will be documented and identified under signs of use if necessary.

Damage or defects which, according to the underlying standard, can no longer be attributed to normal use or wear and tear are listed in the product under "Depreciating Factors".

Depending on the product specification, a monetary ID can be provided. If this takes place, the costs can be 100% d or pro rata depending on the vehicle's age and mileage.

## Previous damages

According to available information previous damages were repaired at the vehicle. Traces of repairs, which allow conclusions about the area of repair, were not recognizable during the inspection.



## Comments

- Winterradsatz ist kein Bestandteil des Auslieferungsumfangs.





Figure 1: Diagonal front (left)



Figure 2: Diagonal front (right)



Figure 3: Diagonal rear (left)



Figure 4: Diagonal rear (right)



Figure 5: Interior - front



Figure 6: Interior - rear





Figure 7: Instrument cluster



Figure 8: Instrument panel



Figure 9: interior 360° view



Figure 10: Cargo area

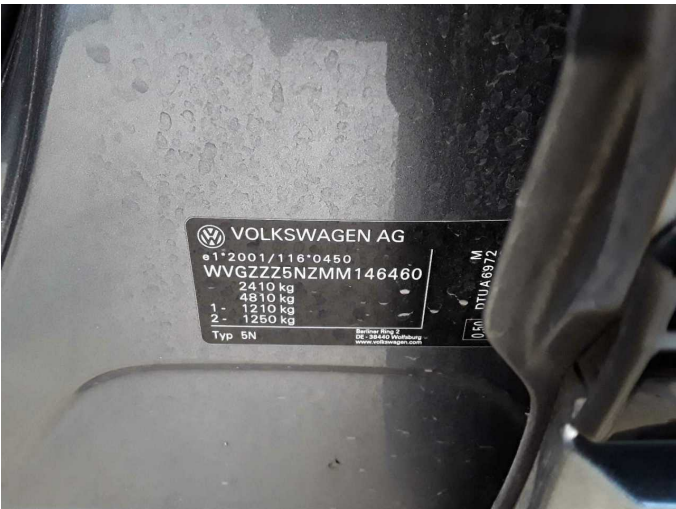


Figure 11: VIN



Figure 12: Mounted tyres





Figure 13: Documents

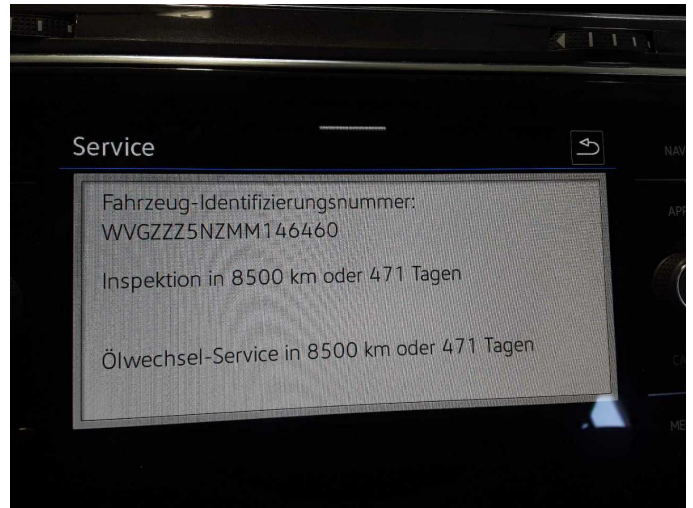


Figure 14: Documents



Figure 15: Documents



Figure 16: Additional tyres

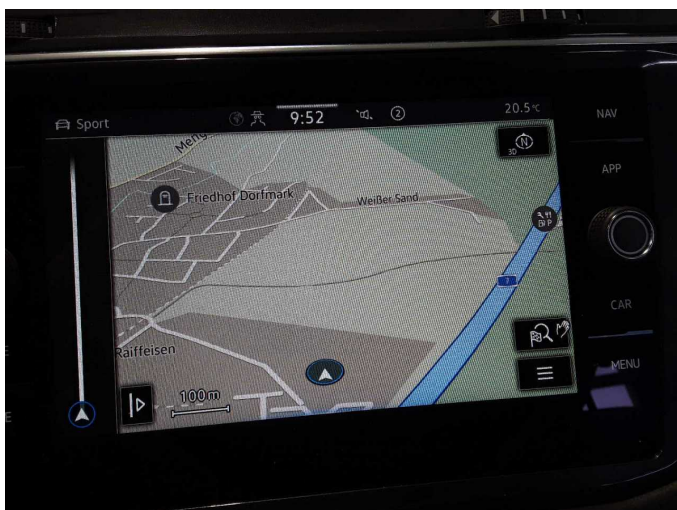


Figure 17: Navigation



Figure 18: Misc.



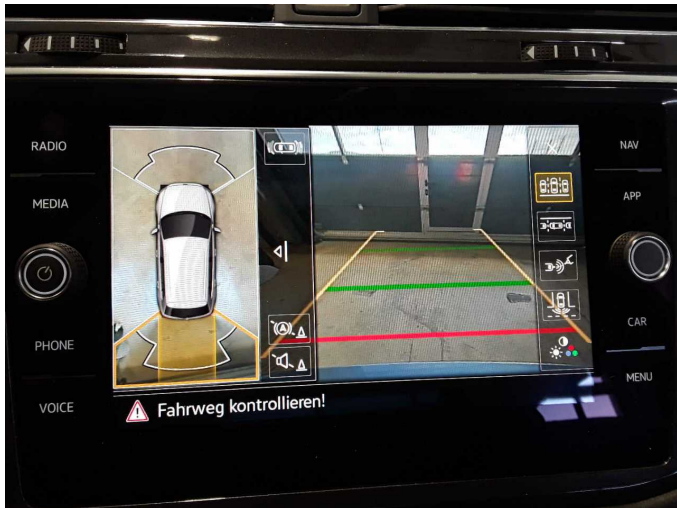


Figure 19: Misc.



Figure 20: Misc.

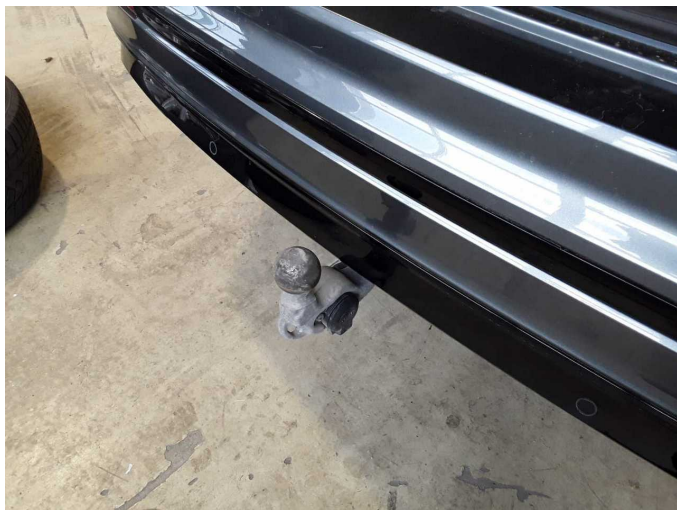


Figure 21: Misc.

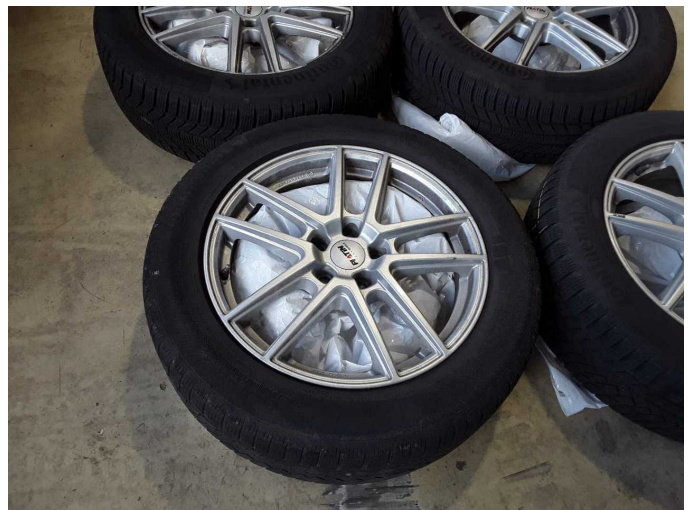


Figure 22: Misc.



Figure 23: Misc.



Damage 1: Door - rear right side: Door edge - Scratch(es) - Smart repair





**Damage 1:** Door - rear right side: Door edge - Scratch(es) - Smart repair



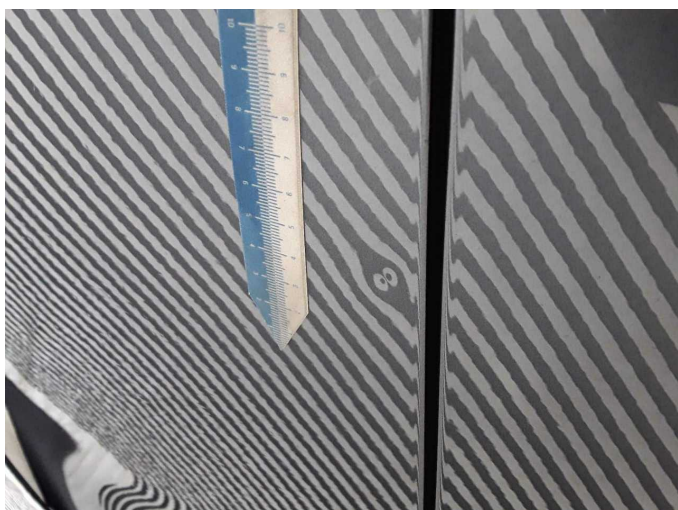
**Damage 2:** Door - rear left side: Door edge - Scratch(es) - Smart repair



**Damage 2:** Door - rear left side: Door edge - Scratch(es) - Smart repair



**Damage 3:** Door - rear right side: Door - dent(s) - Smooth repair work

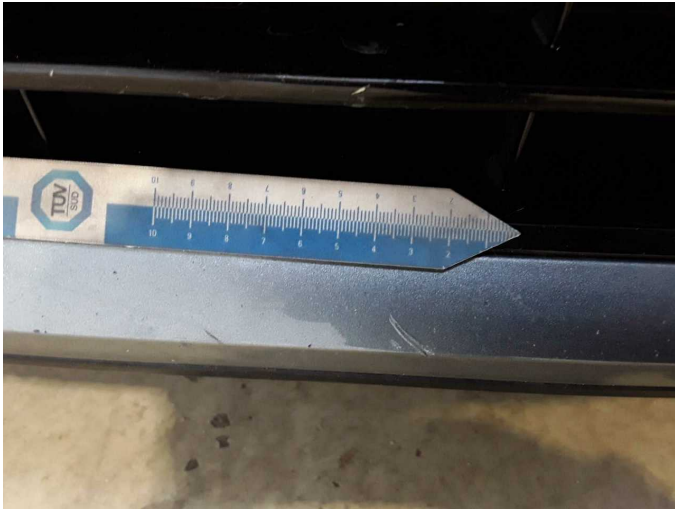


**Damage 3:** Door - rear right side: Door - dent(s) - Smooth repair work

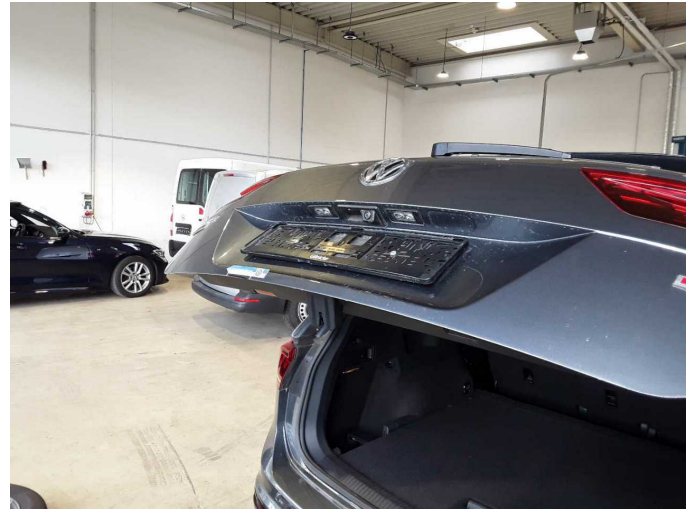


**Damage 4:** Front bumper: Front bumper - Scratch(es) - Smart repair





**Damage 4:** Front bumper: Front bumper - Scratch(es) - Smart repair



**Damage 5:** Boot lid / rear door: Boot lid - Paint defect - Smart repair



**Damage 5:** Boot lid / rear door: Boot lid - Paint defect - Smart repair



**Damage 6:** Wheel / tyres: Alloy rim - rear right side - Scratch(es) - Repair and paint

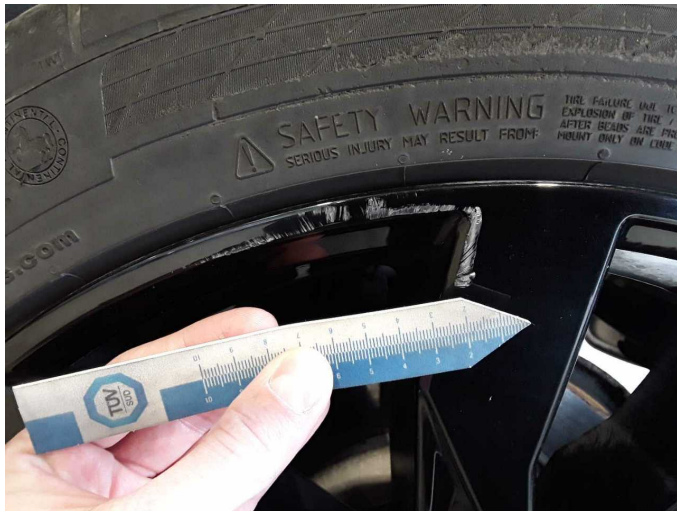


**Damage 6:** Wheel / tyres: Alloy rim - rear right side - Scratch(es) - Repair and paint



**Damage 7:** Wheel / tyres: Alloy rim - rear left side - Scratch(es) - Repair and paint





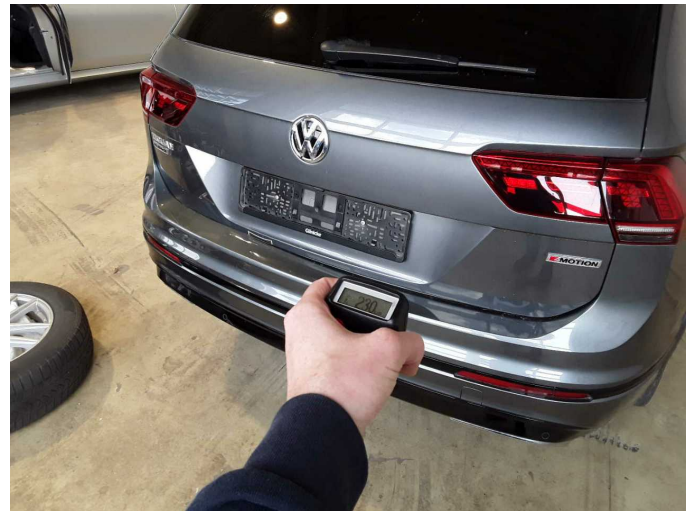
**Damage 7:** Wheel / tyres: Alloy rim - rear left side - Scratch(es) - Repair and paint



**Damage 8:** Wheel / tyres: Alloy rim - front right side - Scratch(es) - Repair and paint



**Damage 8:** Wheel / tyres: Alloy rim - front right side - Scratch(es) - Repair and paint



**Repainting 1:** Boot lid / rear door



**Repainting 1:** Boot lid / rear door