



Expertise

Protocol number: 39741604  
Order No. / Reference: 24686615  
Inspection date: 15 May 2025

Manufacturer: Volkswagen	Model: Tiguan Allspace 2.0 TDI SCR 4Motion DSG Comfortline
VIN: WVGZZZ5NZMM146255	



Vehicle details	
Manufacturer / Type / Model / Equipment	
Volkswagen Tiguan Allspace 2.0 TDI SCR 4Motion DSG Comfortline	
Vehicle Identification number	WVGZZZ5NZMM146255
Mileage (Read)	178,924 km
First registration	24 Mar 2022
Number of holders	1
Power / Engine displacement	147 kw / 1,968 ccm
Fuel type / Cylinder	Diesel / 4
Gearbox / Number of gears	Automatic / 7
Type of drive	All-wheel drive
Type of vehicle	SUV
Colour / colour code	Blue Silk Metallic
Doors / Seats	5 / 5
Upholstery type	Cloth
Colour of upholstery	Black-Anthracite



## Vehicle details

<b>Maintenance booklet / proof</b>	digital proof / complete	<b>Next maintenance in</b>	6,600 km
<b>Last maintenance on / at</b>	11/2024 at 155,394 km		
<b>Key is / should be</b>	2 / 2	<b>FZG documents</b>	ZB#2 (B) was available (copy), ZB#1 (S) was not available
		<b>Letter No.</b>	GF265085
<b>Previous damage / Accident</b>	Detectable	<b>Repainting</b>	Detectable
<b>Inspection conditions</b>	Sufficient	<b>Lifting equipment / pit</b>	yes
<b>Test drive</b>	Not performed	<b>Engine function test</b>	Performed
<b>Manufacturer key number/ type code number</b>	0603 / CLD 01916		
<b>Emission standard</b>	EURO6;WLTP;AP;PI/CI; M, N1 I	<b>Fine dust sticker</b>	
<b>Permitted total weight</b>	2,390 kg	<b>Empty weight</b>	

## Tyres

### Mounted tyres

#	Tyre size	Type of tyre	Manufacturer	Tread depth
1)	255/45 R19 100V	Summer tyres on Light alloy	Pirelli	5mm / 5mm
2)	255/45 R19 100V	Summer tyres on Light alloy	Pirelli	5mm / 5mm

### Additional tyres

#	Tyre size	Type of tyre	Manufacturer	Tread depth
1)	235/55 R18 100H	Winter tyres on Light alloy	Continental	2mm / 2mm
2)	235/55 R18 100H	Winter tyres on Light alloy	Continental	4mm / 4mm

### Replacement

Typ	Tyre size	Type of tyre	Manufacturer	Tread depth
	Tirefit	Expiration date 03/2025		

**Legend:** Tread depth information for tires on the left is in the first place, for tires on the right is in the second place on the axle in the direction of travel

## Equipment

### Standard equipment

- 2 USB-C ports at the front
- Airbag for driver and front passenger including knee airbag on the driver's side
- Exterior mirror on driver's side aspherical
- Hill descent assistant
- Chrome strips on the side windows
- Roof rails silver anodized
- diesel particulate filter
- Parking assistance
- Electronic stabilization program with counter-steering support
- Electric windows front and rear
- Front windscreen in laminated safety glass, heat and sound insulating
- Luggage compartment lighting
- Transmission: 7-speed DSG
- Halogen twin headlights and indicators under a common clear glass cover
- Interior mirror automatically dimming
- Air conditioning
- Headrests (3) rear
- Steering wheel: Multifunction steering wheel in leather, with shift paddles
- Manual headlight range adjustment
- Multifunction display "Premium"
- Fog lights and cornering lights
- Emergency braking assistant "Front Assist"
- Upholstery: Cloth
- Radio accessories: 8 speakers
- Rain sensor
- Wheels: Light alloy (4) "Tulsa" 7 J x 17
- Wheels: Tire Mobility Set
- Drawers under the front seats
- Seat belts: Three-point automatic seat belts in the front with height adjustment and belt tensioner
- Seats: Comfort seats in the front
- Seats: Rear seat bench asymmetrically split
- Lane keeping assistant "Lane Assist"
- socket, 12-volt
- Telephone interface
- First aid kit, warning triangle and safety vest
- Electronic immobilizer
- Central locking without safe security, with radio remote control, and 2 radio keys
- Storage compartments in the roof console
- Airbag, head airbag system including front side airbags
- permanent 4MOTION all-wheel drive
- Exterior mirror housing painted silver
- Chrome applications on mirror adjustment, window lifter switches, door handles
- "Checker Flag Titanium" decorative inlays
- Dual-tone horn
- Electronic parking brake including auto-hold function
- Automatic headlight switching, with daytime running lights
- Driving profile selection
- Light Assist high beam control
- Pedestrian detection
- Luggage compartment cover
- Luggage compartment lid with electric opening and closing
- Rear window heated
- Rear window wiper with interval control
- License plate lighting in LED technology
- Instrument cluster with electronic speedometer
- Front headrests
- Reading lights 2 front and 2 rear
- light in the front footwell
- Front center armrest
- Fatigue detection
- Non-smoking version
- Emergency call service
- Radio "Composition"
- Radio accessories: Digital radio reception DAB+
- Tire pressure monitoring indicator
- Wheels: Tires 215/65 R 17, rolling resistance optimized
- Leather gearshift knob
- Power steering
- Seats: Passenger seat backrest completely foldable
- Seats: Folding tables on the backs of the front seats
- Seats: Lumbar supports in front
- Seats: Front seats with height adjustment
- Start-stop system with brake energy recovery
- Bumpers in body color
- Textile floor mats front and rear
- Prepared for "We Connect" and "We Connect Plus"
- Green thermal insulation glazing, side and rear

### Extra equipment



- Active Lighting System (Dynamic Light Assist, LED headlights with LED daytime running lights and cornering lights, dynamic headlight range control with dynamic cornering lights, multifunction camera)
- Anti-theft alarm system with safe security (anti-theft alarm system with interior monitoring, - backup horn and tow-away protection - central locking with safe security, - radio remote control and 2 radio folding keys)
- Air Care Climatronic air conditioning system (3-zone temperature control - allergen filter - rear controls)
- Paint finish: metallic
- Mesh partition
- Package: "Easy Open & Close" package with safe security (trunk lid with sensor-controlled opening and closing, with remote unlocking - keyless locking and starting system "Keyless Access" with safe security)
- Package: Ambient package for R-Line (2 LED reading lights at the front and 2 at the rear - ambient lighting (1-color), in the door decors - "Dark Grid" decorative inserts for the instrument panel and front door panels - front door sills in aluminum, with R-Line logo)
- Package: Mirror package (electrically adjustable, folding and heated exterior mirrors, with passenger mirror lowering - interior mirror automatically dimming)
- Package: Winter 1 (automatically heated windscreen washer nozzles at the front - headlight cleaning system - heated front seats)
- Windows: Rear side windows and rear window tinted
- Seats: 2 individual seats in the 3rd row (2 seats in the 3rd row, including rear seat bench and backrest asymmetrically split folding, with center armrest - luggage compartment floor with storage compartment)
- Automatic distance control ACC up to 210 km/h "stop&go" and emergency braking assistant Front Assist (DSG) (ACC up to 210 km/h, including speed limiter and "Front Assist" - fatigue detection)
- Chassis: Adaptive chassis control DCC (allows the driver to choose between comfortable, sporty or normal chassis settings at the touch of a button - reacts permanently to different driving situations and takes braking, steering and acceleration processes into account - Adaptive chassis control DCC including driving profile selection - ECO function)
- Package: "Business Premium" package (2 USB-C interfaces at the front, 1 USB-C charging socket on the rear center console - App-Connect incl. App-Connect Wireless for Apple CarPlay and Android Auto - Digital Cockpit Pro, multi-colored, various info profiles selectable - Automatically heated windshield washer nozzles at the front - Headlight cleaning system - Voice control - "Comfort" telephone interface with inductive charging function - Heated front seats)
- Package: R-Line Volkswagen R (DSG) (LED reading lights. LM wheels "Sebring" 8.5 J x 19 gray met. AirStop tires 255/45 R 19, rolling resistance opt. Black roof liner. Front door sills aluminum, R-Line logo. Rear spoiler in R-styling black. Fog lights, cornering lights. Pedals and footrest in brushed stainless steel. R-Line multifunction sports steering wheel in leather with shift knob. Wheel locks. Seat center panels front and outer rear in fabric, inner sides of seat bolsters in microfiber. Bumpers and side sills. R-styling top comfort seats in front)
- Preparing fire extinguishers

## Brief expert findings

Documents submitted	At the time of the inspection, the registration certificate part 2 (letter) was available, but the registration certificate part 1 (certificate) was not available. (Copy)
VIN comparison	The vehicle identification number (VIN) was read and the undersigned verified that it matched the documents submitted during the inspection.
Inspection	The inspection conditions were sufficient for the assessment of the vehicle. Lifting equipment and a pit were available for examining the vehicle.
Test drive	No test drive/maneuvering was carried out during the inspection of the vehicle.
Engine function test	An engine test run was performed.

## Value reducing factors

No.	Component group	Description
1	Seat - front	Seat cover - left side - Soiled - Clean
2	Seat - rear	Back seat - Soiled - Clean
3	Seat - front	Seat cover - right side - Soiled - Clean
4	Wing mirror - right side	Cap - Scratched - Paint
5	Steering system	Steering wheel - Scratched - Smart repair
6	Interior	Interior - Odour - Ozone treatment





No.	Component group	Description
7	Door - rear left side	Door (Steinschlag) - Scratched - Smart repair
8	Door - rear right side	Door - Dent / paintcoat damage - Smart repair
9	Engine	Engine (Ölundichtigkeiten Motor) - Leaking - Perform diagnosis
10	Door - rear right side	Brightware - lower - Scratched - Paint
11	Trim / covers	Roof lining - Holes - Smart repair
12	Trim / covers	Carpet - front left side - Holes - Smart repair
13	Door - front left side	Door seal - Scratched - Replace
14	Side panel - rear right side	Wheel well extension - Scratched - Replace
15	Gearbox	Gear knob - Scratched - Replace
16	Vehicle glazing	Rear window - Scratched - Loss in value
17	Wheel / tyres	Alloy rim - rear left side - Damaged - Loss in value
18	Wheel / tyres	Alloy rim - rear right side - Damaged - Loss in value
19	Engine	Engine (Riementrieb) - Noise - Perform diagnosis
20	Wheel / tyres	Tyre - right - Porous / cracked - Replace
21	Mudguard - left side	Mudguard - left side - Deformed - Repair and paint
22	Rear bumper	Rear bumper - Scratched - Repair and paint
23	Door - front left side	Door - Dent / paintcoat damage - Repair and paint

## Wear and tear

No.	Component group	Description
1	2nd wheel set	2 tyres (einseitig) - Expired - No deduction
2	Wheel / tyres	Alloy rim - front left side - Scratched - No deduction
3	Headlight	Headlight - right side (Kratzer) - Stone chips - No deduction
4	Headlight	Headlight - left side (Kratzer) - Stone chips - No deduction
5	Bonnet	Bonnet (Kratzer) - Stone chips - No deduction
6	Boot lid / rear door	Boot lid (Kratzer) - dent(s) - No deduction
7	Door - front right side	Door - Paint defect - No deduction
8	Interior	Cargo area floor - Scratched - No deduction
9	Trim / covers	Boot lid - interior trim - Scratched - No deduction
10	Trim / covers	Cargo area - lining - right side - Scratched - No deduction
11	Trim / covers	Cargo area - lining -left side - Scratched - No deduction
12	Interior	Interior - Scratch(es) - No deduction
13	Body	Body (oberflächlich) - Scratch(es) - No deduction
14	Roof	Roof (Dellen) - Stone chips - No deduction
15	Vehicle glazing	Windscreen - Stone chips - No deduction
16	Side panel - rear left side	Sill - dent(s) - Smooth repair work
17	Side panel - rear right side	Sill - Scratch(es) - Cover / polish
18	Trim / covers	Floor mats - Holes - No deduction

The vehicle shows signs of wear commensurate with its age and use.

## Accident damages

### No. Accident

- 1 Front, Side - left, Side right



## Repainting

### No. Repainting

- 1 Door - front right side, Professionally carried out, Invoice of repair done Non-existent

## Paint coat thickness measurement

Door - front right side 165 µm |

## Order/Scope of order

The order was placed to prepare a sales report for the vehicle described. This includes the following:

- Description of core relevant information about the vehicle
- Documentation of equipment features  
(*Delivery by third-party service providers*)
- Documentation of damage, defects, missing parts
- Documentation of previous damage, unrepaired previous damage, repainting
- a brief visual or functional inspection of the equipment details if possible.  
(*Functional tests of driver assistance systems are not included in the scope of services!*)
- a photo documentation of the vehicle

## Basis for the order

This product is based on the Alphabet Fuhrpark GmbH guidelines for vehicle returns and valuations. The expert makes the explicit findings in each individual case objectively within the framework of the specified standards based on his or her own expertise.

The vehicle inspection takes place in a disassembled state.

Damage or defects that can only be detected during disassembly/diagnosis work or through advanced knowledge remain within the scope of the prognosis risk. An extended risk exists for concealed defects caused by fraudulent deception and not identifiable by the expert.

Damage or defects resulting from normal use or wear and tear of the vehicle will be accepted according to the applicable standard.

There was no explicit identification or monetary consideration of the expected features within the product.

Features which in their nature and severity slightly exceed normal use but do not constitute unacceptable damage will be documented and identified under signs of use if necessary.

Damage or defects which, according to the underlying standard, can no longer be attributed to normal use or wear and tear are listed in the product under "Depreciating Factors".

Depending on the product specification, a monetary ID can be provided. If this takes place, the costs can be 100% d or pro rata depending on the vehicle's age and mileage.

## Previous damages

Non-repaired previous damages were found at the vehicle. The necessary repair costs are listed in the expert report or if necessary, are listed in detail in a separately enclosed repair cost calculation.

## Comments

Der beiliegende Winterradsatz ist nicht Bestandteil der vorliegenden Fahrzeugausstattung.

Die beigefügte Reparaturkostenkalkulation wurde nach bestem Wissen und Gewissen unter eingeschränkten Besichtigungsbedingung im demontagefreien Zustand erstellt. Es können aufgrund verdeckter Beschädigung erhebliche Mehrkosten und somit Abweichung der für den Unfall ausgewiesenen Reparaturkosten nicht ausgeschlossen werden.



Figure 1: Diagonal front (left)



Figure 2: Diagonal front (right)



Figure 3: Diagonal rear (left)



Figure 4: Diagonal rear (right)



Figure 5: Interior - front



Figure 6: Interior - rear





Figure 7: Instrument cluster



Figure 8: Instrument panel



Figure 9: interior 360° view ([Online link](#))



Figure 10: Cargo area

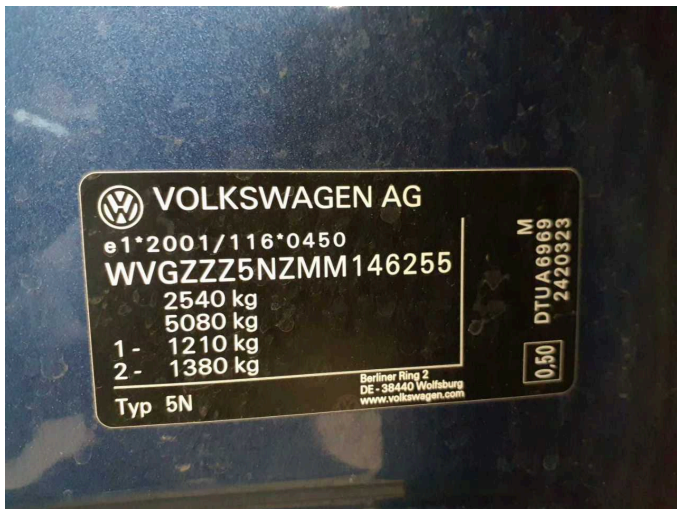


Figure 11: VIN



Figure 12: Mounted tyres

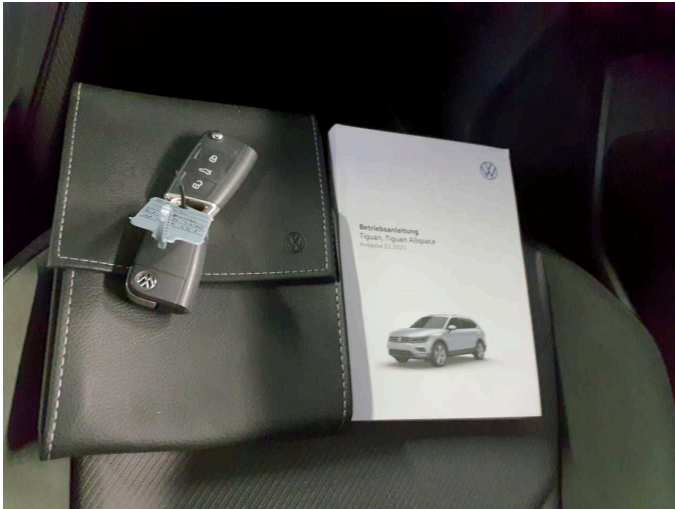


Figure 13: Documents



Figure 14: Additional tyres



Figure 15: Navigation



Figure 16: Misc.

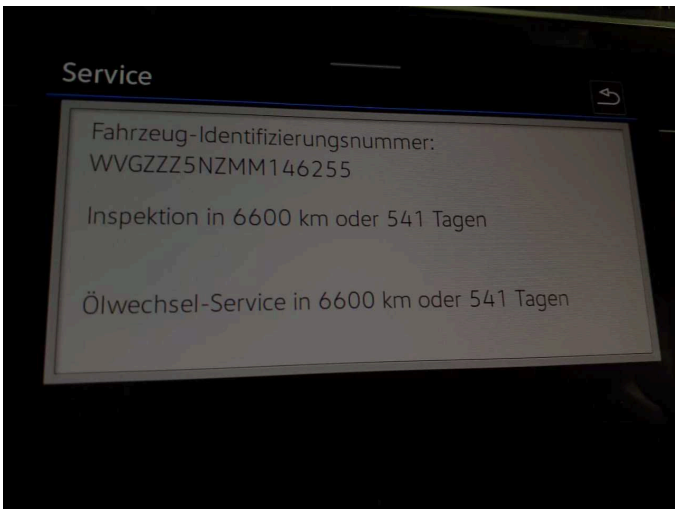


Figure 17: Misc.



Figure 18: Misc.





Figure 19: Misc.



Figure 20: Misc.



Figure 21: Misc.



Figure 22: Misc.



Figure 23: Misc.



Figure 24: Misc.





Figure 25: Misc.

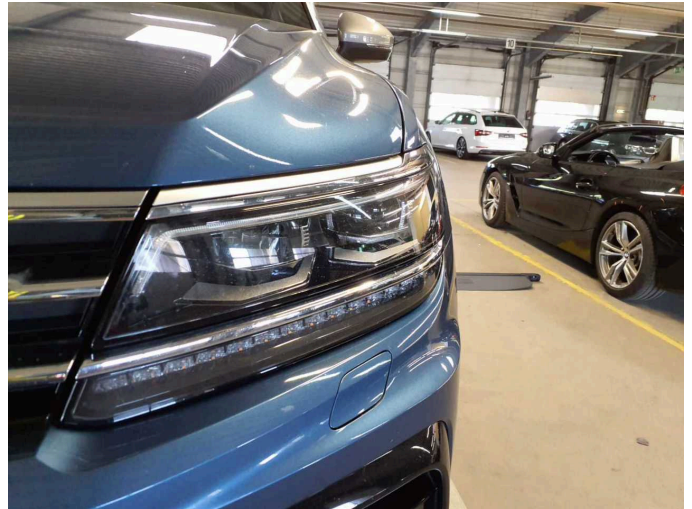


Figure 26: Misc.

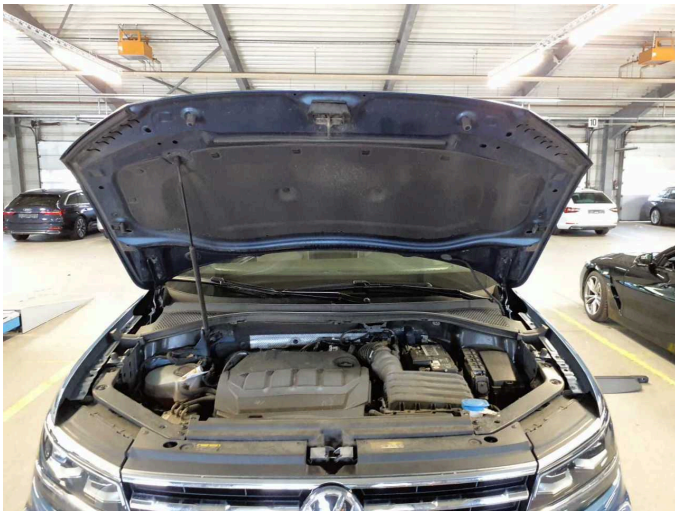


Figure 27: Misc.



Figure 28: Misc.



Figure 29: Misc.



Figure 30: Misc.



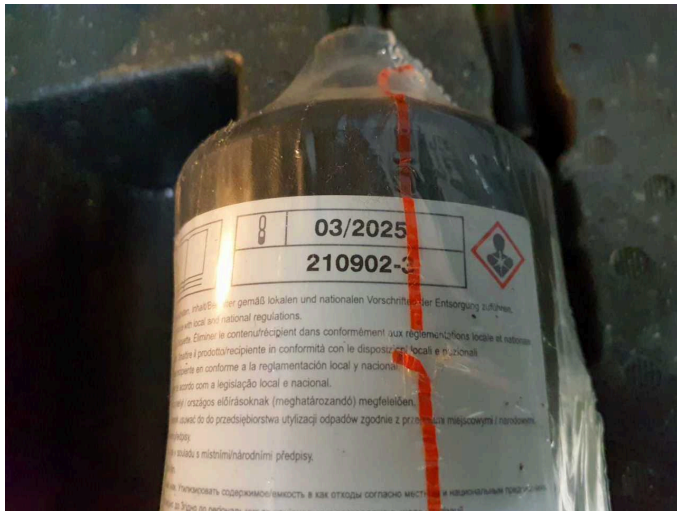


Figure 31: Misc.



Figure 32: Misc.



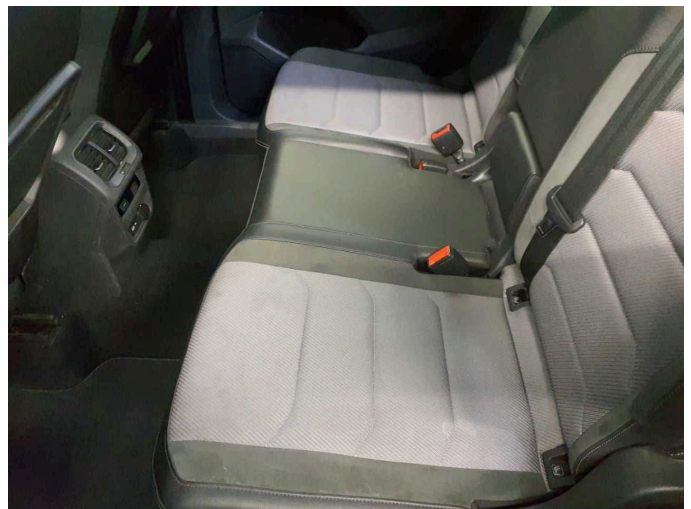
Figure 33: Misc.



Damage 1: Seat - front: Seat cover - left side - Soiled - Clean



Damage 1: Seat - front: Seat cover - left side - Soiled - Clean



Damage 2: Seat - rear: Back seat - Soiled - Clean

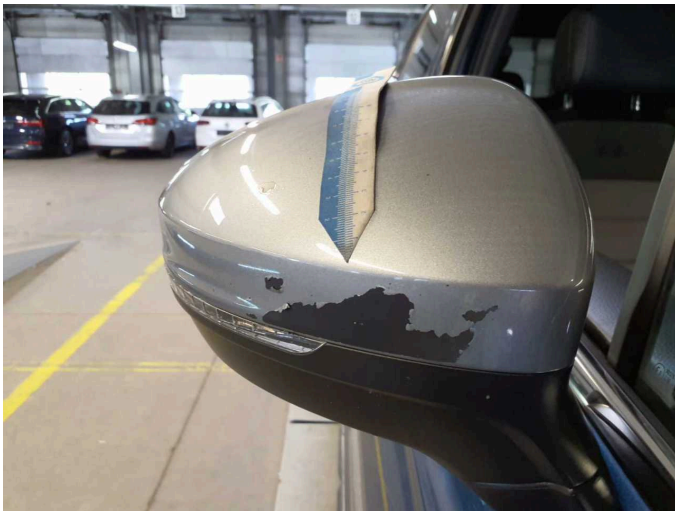




**Damage 3:** Seat - front: Seat cover - right side - Soiled - Clean



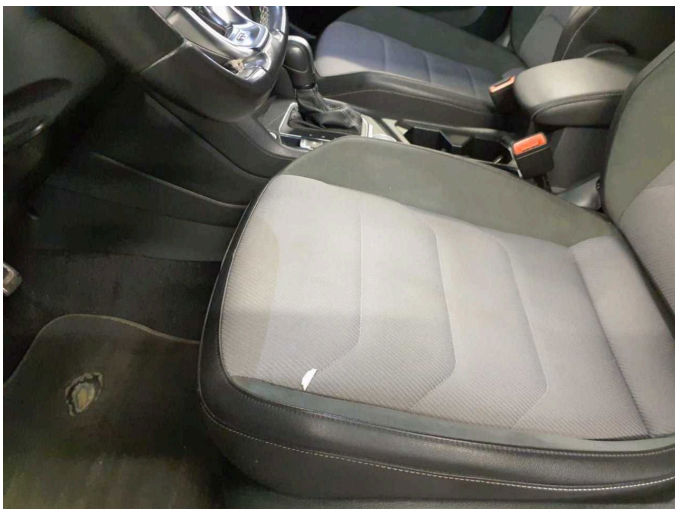
**Damage 4:** Wing mirror - right side: Cap - Scratched - Paint



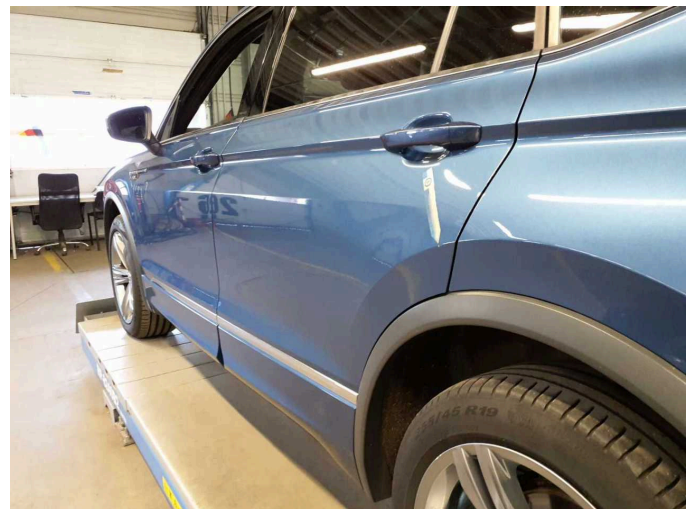
**Damage 4:** Wing mirror - right side: Cap - Scratched - Paint



**Damage 5:** Steering system: Steering wheel - Scratched - Smart repair



**Damage 6:** Interior: Interior - Odour - Ozone treatment

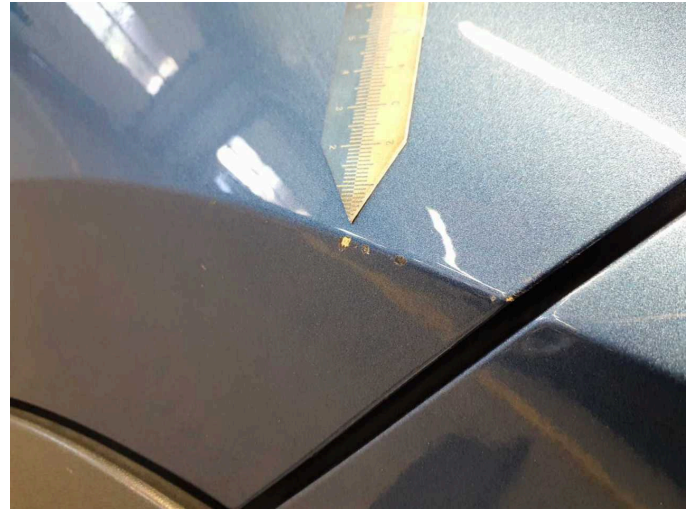


**Damage 7:** Door - rear left side: Door (Steinschlag) - Scratched - Smart repair





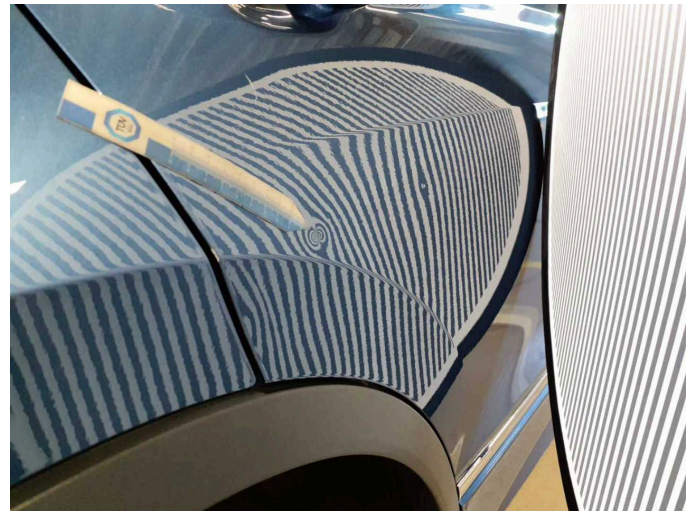
**Damage 7:** Door - rear left side: Door (Steinschlag) - Scratched - Smart repair



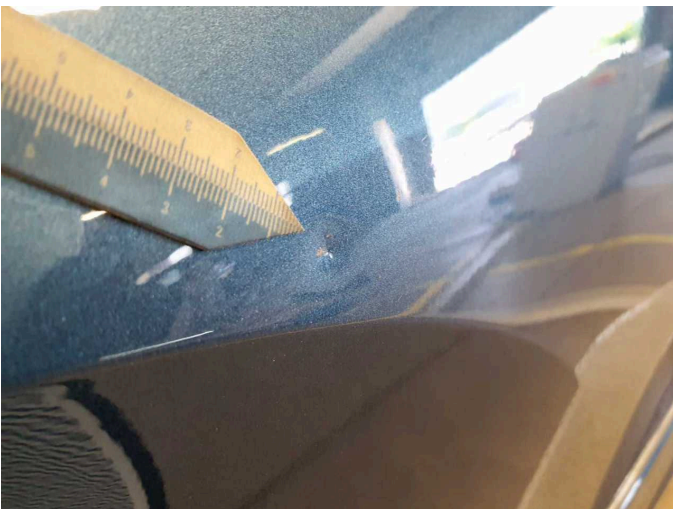
**Damage 7:** Door - rear left side: Door (Steinschlag) - Scratched - Smart repair



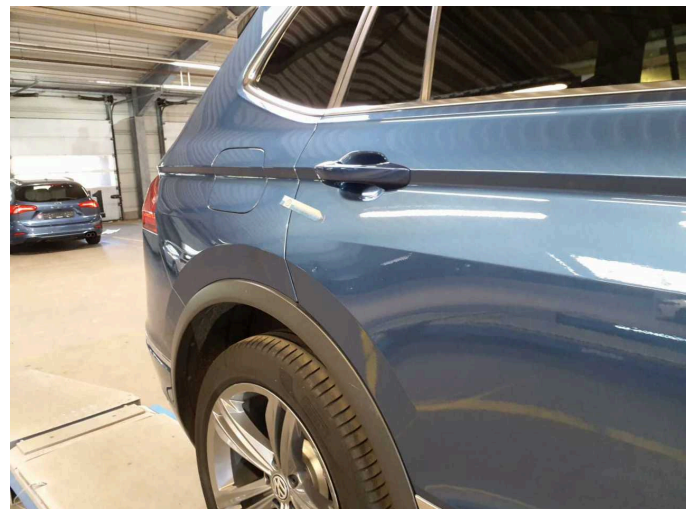
**Damage 8:** Door - rear right side: Door - Dent / paintcoat damage - Smart repair



**Damage 8:** Door - rear right side: Door - Dent / paintcoat damage - Smart repair

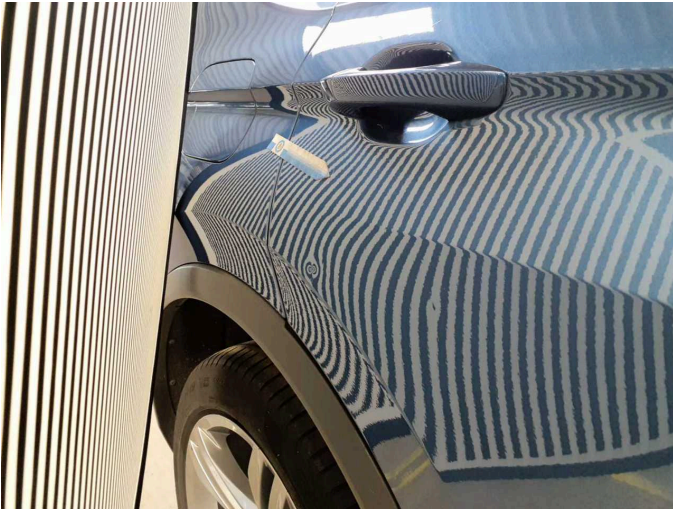


**Damage 8:** Door - rear right side: Door - Dent / paintcoat damage - Smart repair



**Damage 8:** Door - rear right side: Door - Dent / paintcoat damage - Smart repair

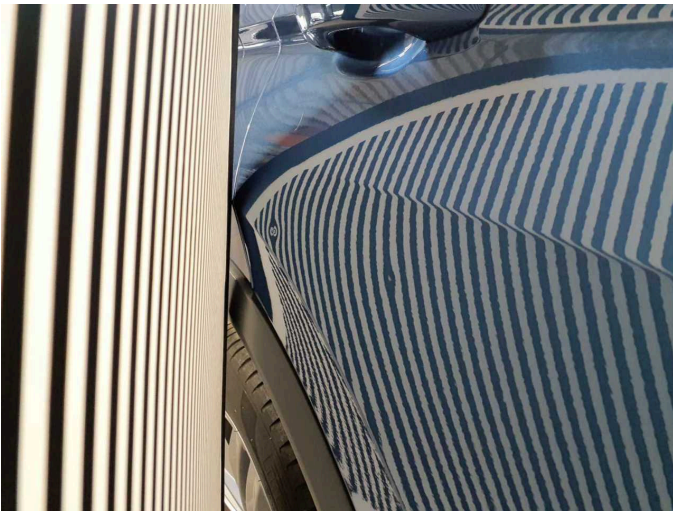




**Damage 8:** Door - rear right side: Door - Dent / paintcoat damage - Smart repair



**Damage 8:** Door - rear right side: Door - Dent / paintcoat damage - Smart repair



**Damage 8:** Door - rear right side: Door - Dent / paintcoat damage - Smart repair



**Damage 9:** Engine: Engine (Ölundichtigkeiten Motor) - Leaking - Perform diagnosis



**Damage 9:** Engine: Engine (Ölundichtigkeiten Motor) - Leaking - Perform diagnosis



**Damage 9:** Engine: Engine (Ölundichtigkeiten Motor) - Leaking - Perform diagnosis

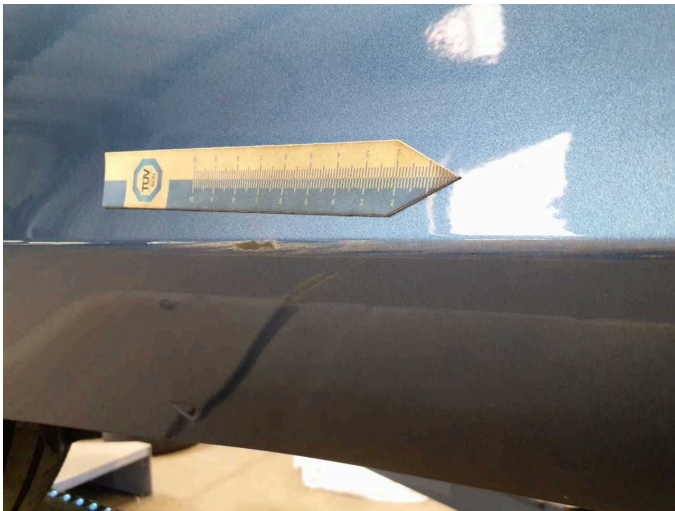




**Damage 9:** Engine: Engine (Ölundichtigkeiten Motor) - Leaking - Perform diagnosis



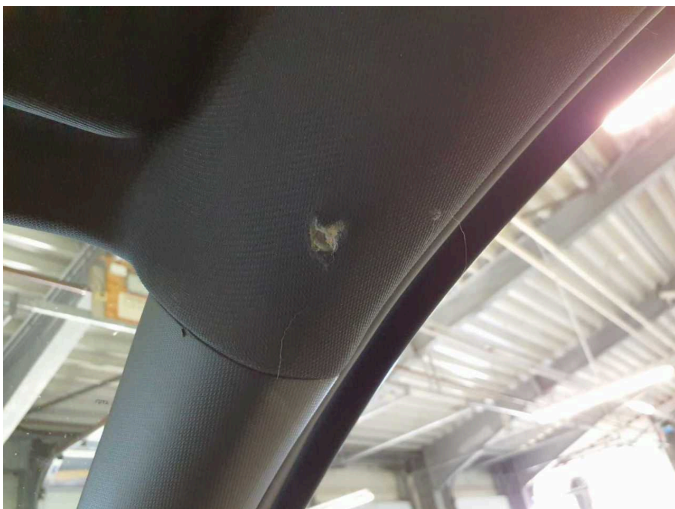
**Damage 10:** Door - rear right side: Brightware - lower - Scratched - Paint



**Damage 10:** Door - rear right side: Brightware - lower - Scratched - Paint



**Damage 11:** Trim / covers: Roof lining - Holes - Smart repair



**Damage 11:** Trim / covers: Roof lining - Holes - Smart repair



**Damage 11:** Trim / covers: Roof lining - Holes - Smart repair

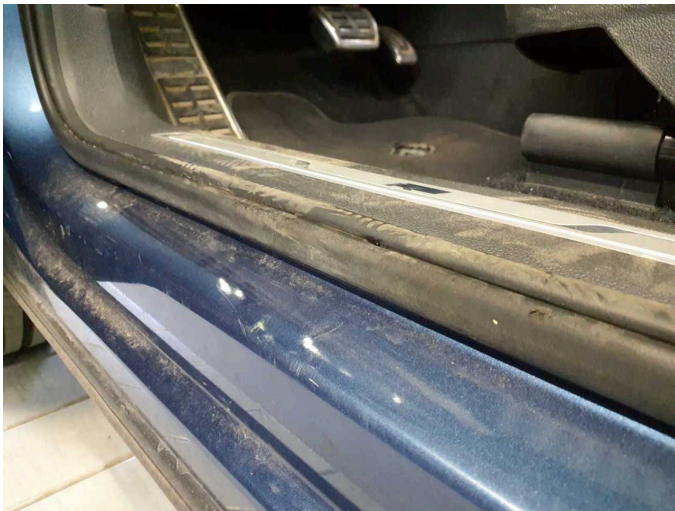




**Damage 12:** Trim / covers: Carpet - front left side - Holes - Smart repair



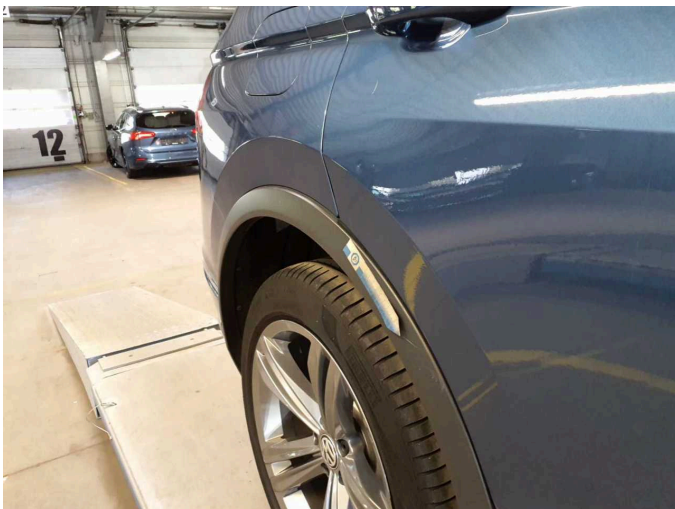
**Damage 12:** Trim / covers: Carpet - front left side - Holes - Smart repair



**Damage 13:** Door - front left side: Door seal - Scratched - Replace



**Damage 13:** Door - front left side: Door seal - Scratched - Replace



**Damage 14:** Side panel - rear right side: Wheel well extension - Scratched - Replace



**Damage 14:** Side panel - rear right side: Wheel well extension - Scratched - Replace

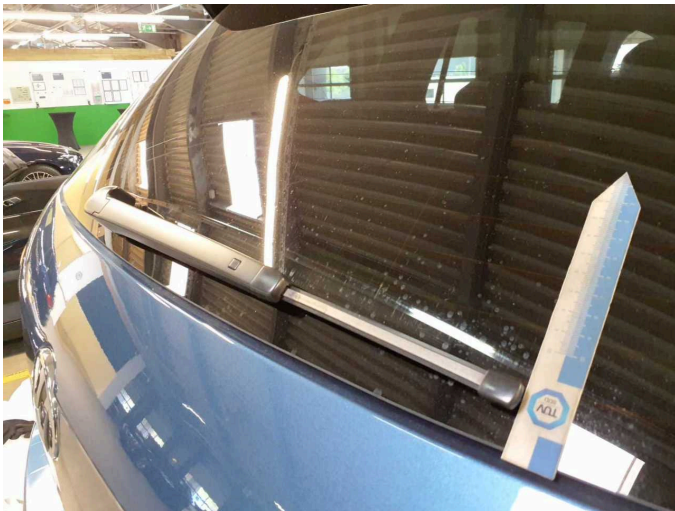




**Damage 15:** Gearbox: Gear knob - Scratched - Replace



**Damage 15:** Gearbox: Gear knob - Scratched - Replace



**Damage 16:** Vehicle glazing: Rear window - Scratched - Loss in value



**Damage 16:** Vehicle glazing: Rear window - Scratched - Loss in value



**Damage 17:** Wheel / tyres: Alloy rim - rear left side - Damaged - Loss in value



**Damage 17:** Wheel / tyres: Alloy rim - rear left side - Damaged - Loss in value





**Damage 18:** Wheel / tyres: Alloy rim - rear right side - Damaged - Loss in value



**Damage 18:** Wheel / tyres: Alloy rim - rear right side - Damaged - Loss in value



**Damage 19:** Engine: Engine (Riementrieb) - Noise - Perform diagnosis



**Damage 20:** Wheel / tyres: Tyre - right - Porous / cracked - Replace



**Damage 20:** Wheel / tyres: Tyre - right - Porous / cracked - Replace



**Damage 20:** Wheel / tyres: Tyre - right - Porous / cracked - Replace

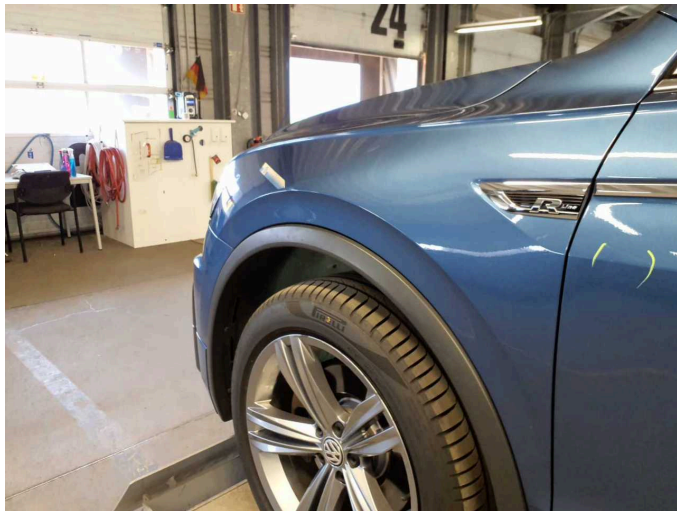




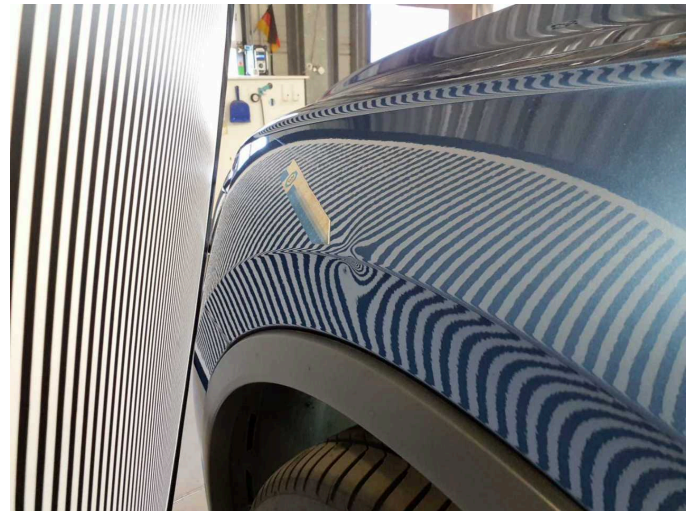
**Damage 20:** Wheel / tyres: Tyre - right - Porous / cracked - Replace



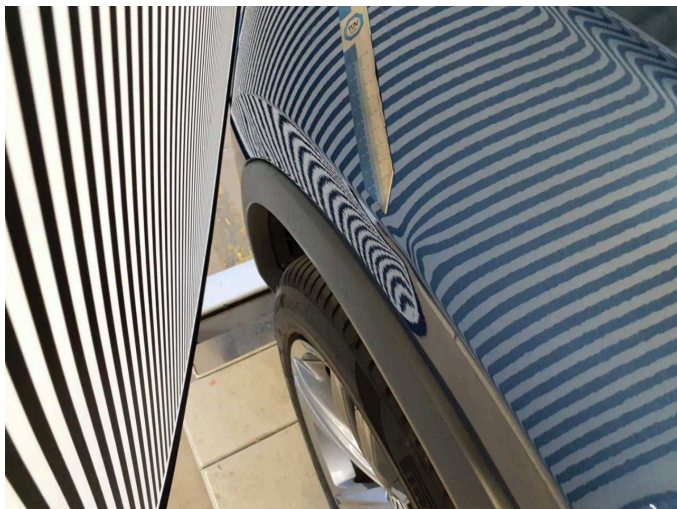
**Damage 20:** Wheel / tyres: Tyre - right - Porous / cracked - Replace



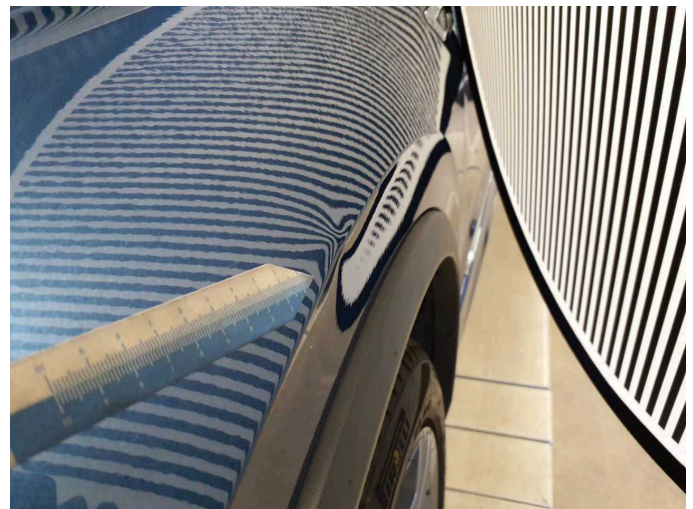
**Damage 21:** Mudguard - left side: Mudguard - left side - Deformed - Repair and paint



**Damage 21:** Mudguard - left side: Mudguard - left side - Deformed - Repair and paint



**Damage 21:** Mudguard - left side: Mudguard - left side - Deformed - Repair and paint



**Damage 21:** Mudguard - left side: Mudguard - left side - Deformed - Repair and paint

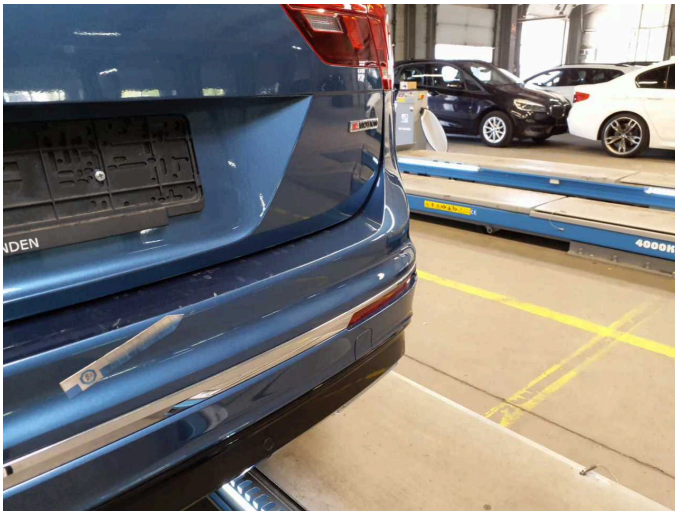




**Damage 22:** Rear bumper: Rear bumper - Scratched - Repair and paint



**Damage 22:** Rear bumper: Rear bumper - Scratched - Repair and paint



**Damage 22:** Rear bumper: Rear bumper - Scratched - Repair and paint



**Damage 22:** Rear bumper: Rear bumper - Scratched - Repair and paint

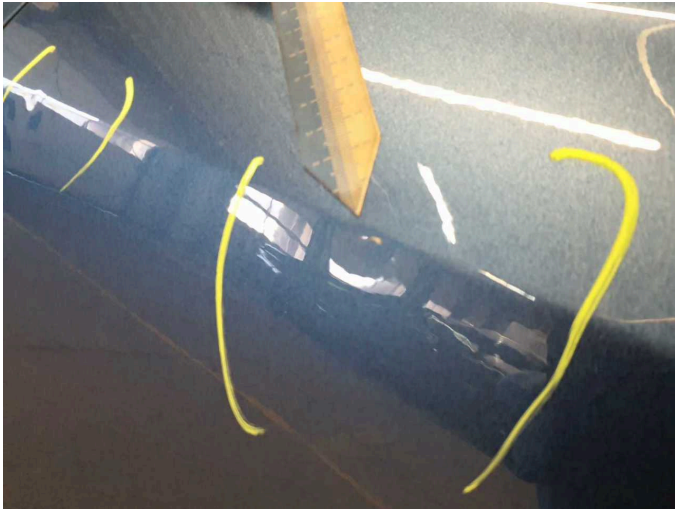


**Damage 23:** Door - front left side: Door - Dent / paintcoat damage - Repair and paint



**Damage 23:** Door - front left side: Door - Dent / paintcoat damage - Repair and paint

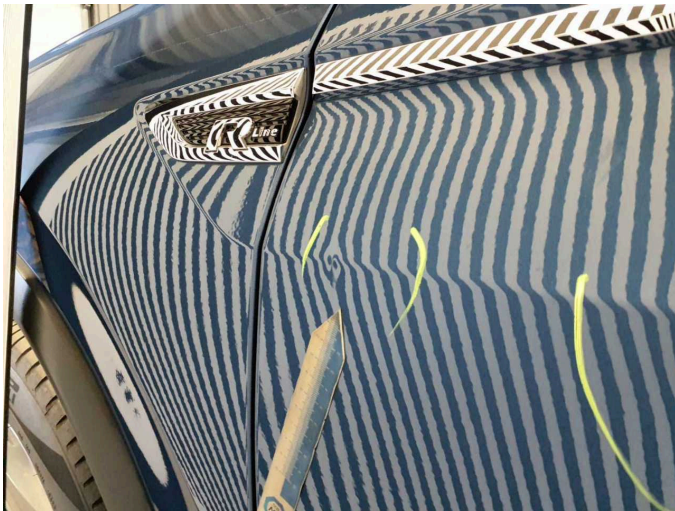




**Damage 23:** Door - front left side: Door - Dent / paintcoat damage - Repair and paint



**Damage 23:** Door - front left side: Door - Dent / paintcoat damage - Repair and paint



**Damage 23:** Door - front left side: Door - Dent / paintcoat damage - Repair and paint



**Wear and tear 1:** 2nd wheel set: 2 tyres (einseitig) - Expired - No deduction

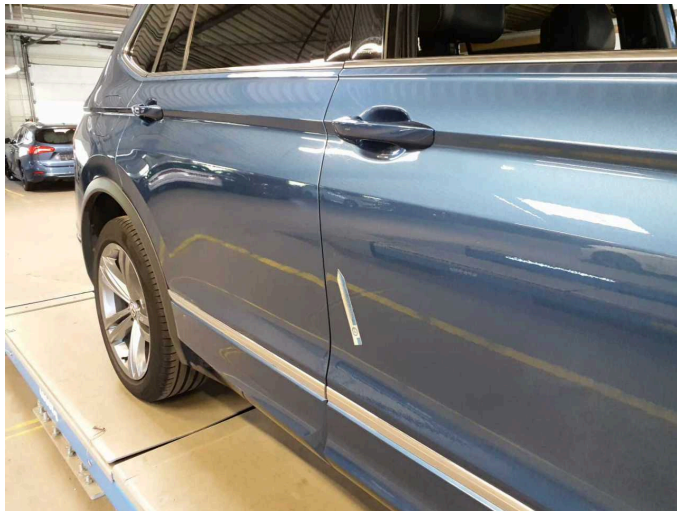


**Wear and tear 1:** 2nd wheel set: 2 tyres (einseitig) - Expired - No deduction

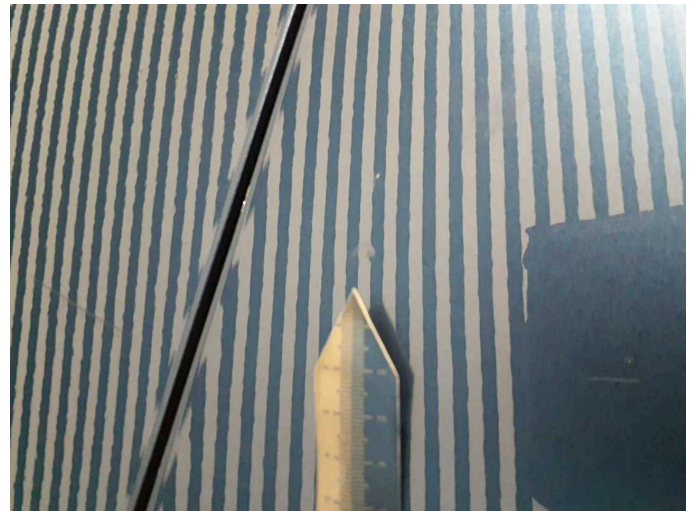


**Wear and tear 1:** 2nd wheel set: 2 tyres (einseitig) - Expired - No deduction





**Wear and tear 7:** Door - front right side: Door - Paint defect - No deduction



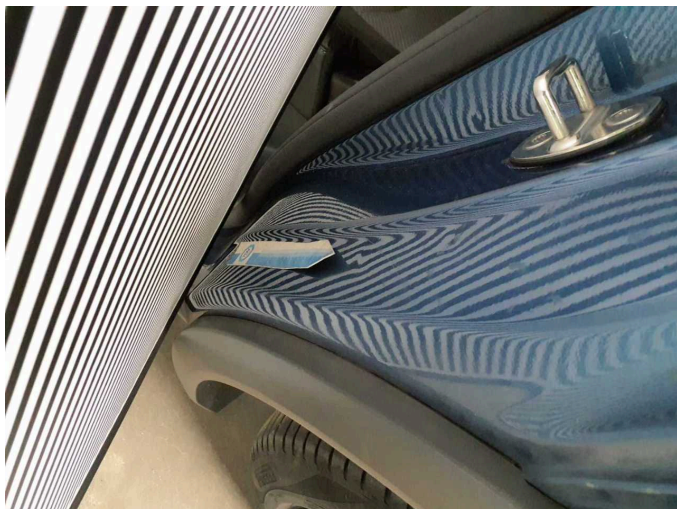
**Wear and tear 7:** Door - front right side: Door - Paint defect - No deduction



**Wear and tear 7:** Door - front right side: Door - Paint defect - No deduction



**Wear and tear 16:** Side panel - rear left side: Sill - dent(s) - Smooth repair work



**Wear and tear 16:** Side panel - rear left side: Sill - dent(s) - Smooth repair work



**Wear and tear 17:** Side panel - rear right side: Sill - Scratch(es) - Cover / polish





**Wear and tear 17:** Side panel - rear right side: Sill - Scratch(es) - Cover / polish



**Wear and tear 18:** Trim / covers: Floor mats - Holes - No deduction



**Wear and tear 18:** Trim / covers: Floor mats - Holes - No deduction



**Accident 1:** Front, Side - left, Side right



**Accident 1:** Front, Side - left, Side right



**Accident 1:** Front, Side - left, Side right





**Accident 1:** Front, Side - left, Side right



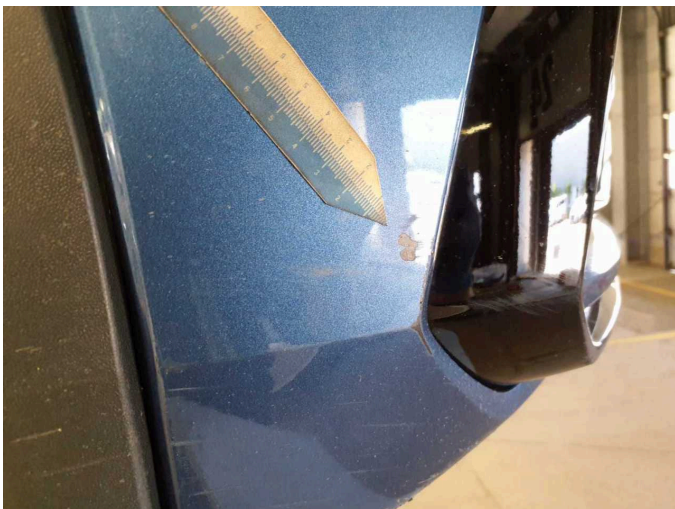
**Accident 1:** Front, Side - left, Side right



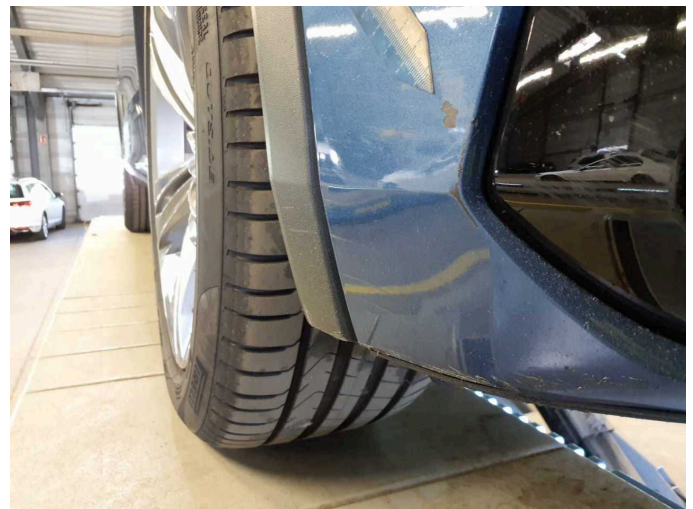
**Accident 1:** Front, Side - left, Side right



**Accident 1:** Front, Side - left, Side right



**Accident 1:** Front, Side - left, Side right



**Accident 1:** Front, Side - left, Side right





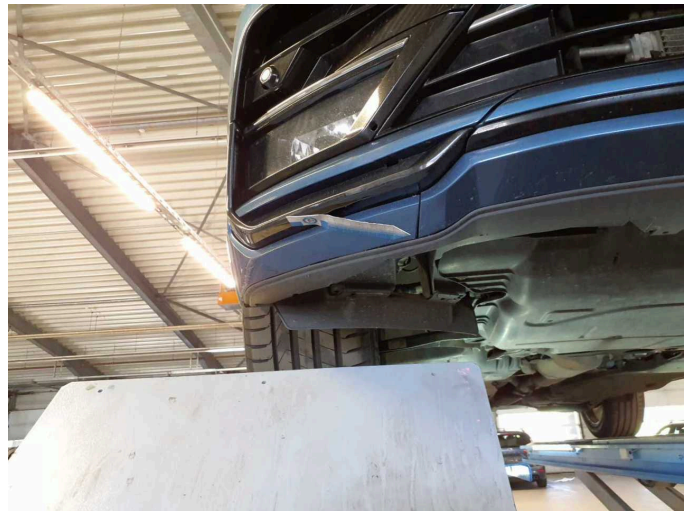
**Accident 1:** Front, Side - left, Side right



**Accident 1:** Front, Side - left, Side right



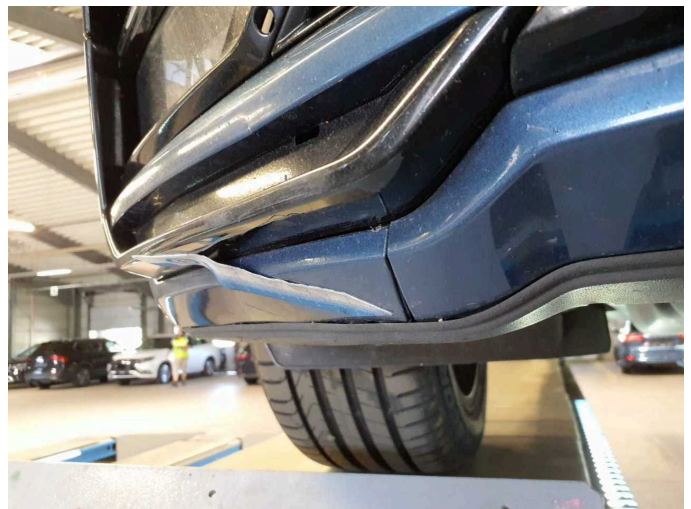
**Accident 1:** Front, Side - left, Side right



**Accident 1:** Front, Side - left, Side right



**Accident 1:** Front, Side - left, Side right

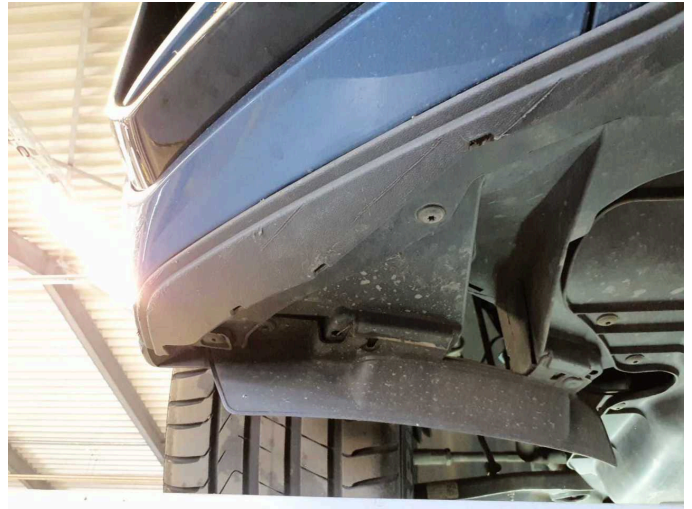


**Accident 1:** Front, Side - left, Side right

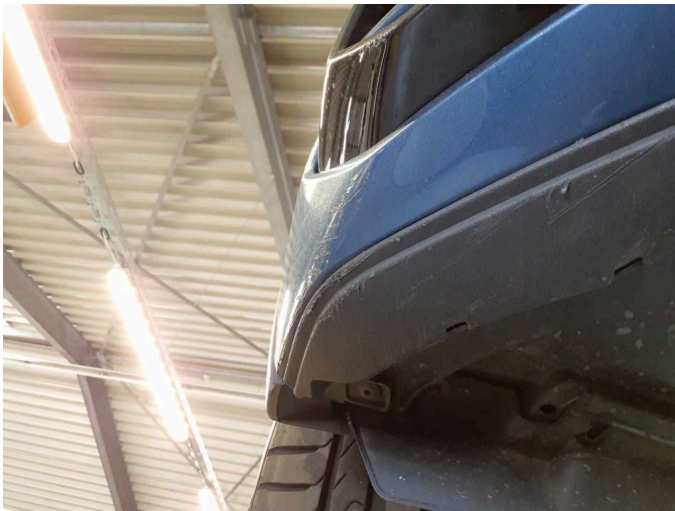




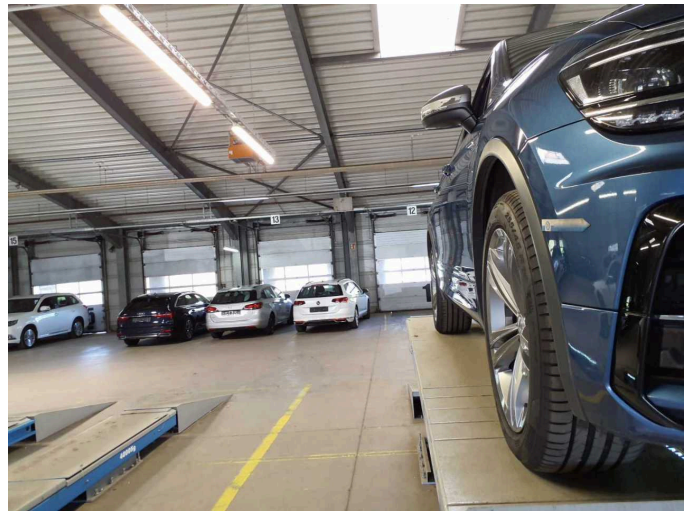
**Accident 1:** Front, Side - left, Side right



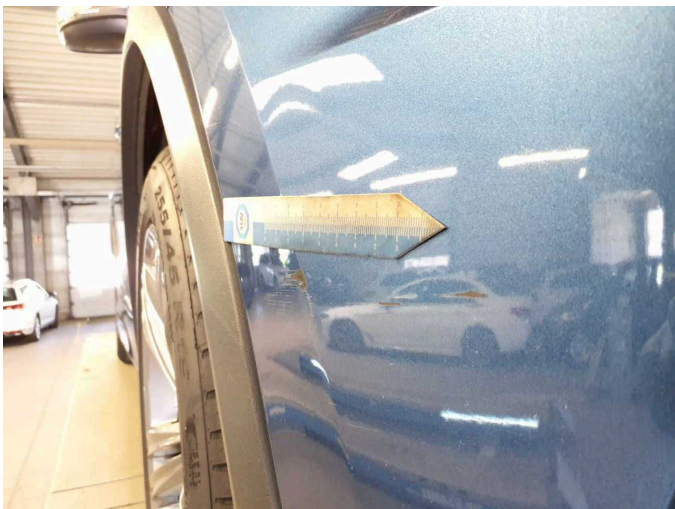
**Accident 1:** Front, Side - left, Side right



**Accident 1:** Front, Side - left, Side right



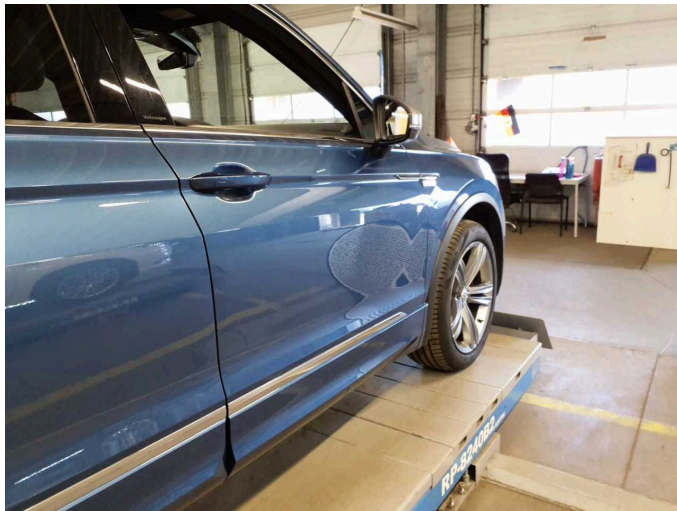
**Accident 1:** Front, Side - left, Side right



**Accident 1:** Front, Side - left, Side right



**Accident 1:** Front, Side - left, Side right



**Repainting 1:** Door - front right side



**Repainting 1:** Door - front right side