



Expertise

Protocol number: 41500787
Order No. / Reference: 25184191
Inspection date: 11 Sept 2025

Manufacturer: Volkswagen

Model: Tiguan Allspace 2.0 TDI SCR DSG Comfortline

VIN: WVGZZZ5NZMM138142



Vehicle details

Manufacturer / Type / Model / Equipment

Volkswagen Tiguan Allspace 2.0 TDI SCR DSG Comfortline

Vehicle Identification number WVGZZZ5NZMM138142

Mileage (Read) 170,059 km

First registration 18 Aug 2021

Number of holders 1

Power / Engine displacement 110 kw / 1,968 ccm

Fuel type / Cylinder Diesel / 4

Gearbox / Number of gears Automatic / 7

Type of drive Front drive

Type of vehicle SUV

Colour / colour code Pure White

Doors / Seats 5 / 7

Upholstery type Leather

Colour of upholstery Beige



Vehicle details

Maintenance booklet / proof	digital proof / complete	Next maintenance in	23,100 km
Last maintenance on / at	07/2025 at 166,044 km		
Key is / should be	2 / 2	FZG documents	ZB#2 (B) was available (copy), ZB#1 (S) was not available
		Letter No.	GC352690
Previous damage / Accident	Detectable	Repainting	None detectable
Inspection conditions	sufficient	Lifting equipment / pit	yes
Test drive	Not performed	Engine function test	Performed
Manufacturer key number/ type code number	0603 / BZG 16362		
Emission standard	EURO6;WLTP;AP;PI/CI; M, N1 I	Fine dust sticker	
Permitted total weight	2,270 kg	Empty weight	

Tyres

Mounted tyres

#	Tyre size	Type of tyre	Manufacturer	Tread depth
1)	235/55 R18 100V	Summer tyres on Light alloy	Continental	5mm / 5mm
2)	235/55 R18 100V	Summer tires (with run-flat tires) on Light alloy	Pirelli	5mm / 5mm

Additional tyres

#	Tyre size	Type of tyre	Manufacturer	Tread depth
1)	215/65 R17 99H	Winter tyres on Steel rim with wheel cover	Continental	5mm / 5mm
2)	215/65 R17 99H	Winter tyres on Steel rim with wheel cover	Continental	6mm / 6mm

Replacement

Typ	Tyre size	Type of tyre	Manufacturer	Tread depth
	Tirefit	Expiration date 02/2025		

Legend: Tread depth information for tires on the left is in the first place, for tires on the right is in the second place on the axle in the direction of travel



Equipment

Standard equipment

- 2 USB-C ports at the front
- Airbag for driver and front passenger including knee airbag on the driver's side
- Exterior mirror housing painted silver
- Chrome strips on the side windows
- Roof rails silver anodized
- diesel particulate filter
- Parking assistance
- Electronic stabilization program with counter-steering support
- Light Assist high beam control
- Pedestrian detection
- Luggage compartment cover
- Luggage compartment lid with electric opening and closing
- Rear window heated
- Rear window wiper with interval control
- License plate lighting in LED technology
- Instrument cluster with electronic speedometer
- Front headrests
- Steering wheel: Multifunction steering wheel in leather, with shift paddles
- Manual headlight range adjustment
- Multifunction display "Premium"
- Fog lights and cornering lights
- Emergency braking assistant "Front Assist"
- Upholstery: Cloth
- Radio accessories: 8 speakers
- Rain sensor
- Wheels: Light alloy (4) "Tulsa" 7 J x 17
- Wheels: Tire Mobility Set
- Drawers under the front seats
- Seat belts: Three-point automatic seat belts in the front with height adjustment and belt tensioner
- Seats: Comfort seats in the front
- Seats: Rear seat bench asymmetrically split
- Lane keeping assistant "Lane Assist"
- socket, 12-volt
- Telephone interface
- First aid kit, warning triangle and safety vest
- Electronic immobilizer
- Central locking without safe security, with radio remote control, and 2 radio keys
- Storage compartments in the roof console
- Airbag, head airbag system including front side airbags
- Exterior mirror on driver's side aspherical
- Chrome applications on mirror adjustment, window lifter switches, door handles
- Checker Flag Titanium decorative inlays
- Dual-tone horn
- Electronic parking brake including auto-hold function
- Automatic headlight switching, with daytime running lights
- Electric windows front and rear
- Front windscreen in laminated safety glass, heat and sound insulating
- Luggage compartment lighting
- Transmission: 7-speed DSG
- Halogen twin headlights and indicators under a common clear glass cover
- Interior mirror automatically dimming
- Air conditioning
- Headrests (3) rear
- Paint finish: Uni
- Reading lights 2 front and 2 rear
- Light in the front footwell
- Front center armrest
- Fatigue detection
- Non-smoking version
- Emergency call service
- Radio "Composition"
- Radio accessories: Digital radio reception DAB+
- Tire pressure monitoring indicator
- Wheels: Tires 215/65 R 17, rolling resistance optimized
- Leather gearshift knob
- Power steering
- Seats: Passenger seat backrest completely foldable
- Seats: Folding tables on the backs of the front seats
- Seats: Lumbar supports in front
- Seats: Front seats with height adjustment
- Start-stop system with brake energy recovery
- Bumpers in body color
- Textile floor mats front and rear
- Prepared for "We Connect" and "We Connect Plus"
- Green thermal insulation glazing, side and rear

Extra equipment

- Active Lighting System (Dynamic Light Assist, LED headlights with LED daytime running lights and cornering lights, dynamic headlight range control with dynamic cornering lights, multifunction camera)
- Display: Head-up display
- Folding trailer hitch (electric release)
- App-Connect including App-Connect Wireless for Apple CarPlay and Android Auto



- Chassis: Sports suspension
- Air Care Climatronic air conditioning system (3-zone temperature control - allergen filter - rear controls)
- "Discover Media" navigation system including "Streaming & Internet" (8 speakers, 20.3 cm touchscreen, dual tuner with phase diversity for optimal radio reception, Radio Data System (RDS), MP3 playback, USB-C interface with Apple compatibility, 4 x 20 watt output, 2D map display, phone interface, traffic sign recognition, points of interest, DAB+ digital radio reception)
- Package: "Vienna" leather with premium comfort seats in the front in conjunction with the Business Package (electrically adjustable, folding, heated exterior mirrors with memory function and ambient lighting - electrically adjustable front lumbar support - seat center panels and bolsters in "Vienna" leather - premium comfort seats in the front - door and side trim in foam foil, insert in synthetic leather - heated front seats - electrically adjustable front seats with memory function; with comfort entry on the driver's side)
- Taillights in LED technology, dark red
- Windows: Rear side windows and rear window tinted
- Seats: 2 individual seats in the 3rd row (2 seats in the 3rd row, including rear seat bench and backrest asymmetrically split folding, with center armrest - luggage compartment floor with storage compartment)
- Adaptive Cruise Control (ACC) up to 210 km/h "stop&go" and Emergency Braking System Front Assist (DSG) (ACC up to 210 km/h, including speed limiter and "Front Assist" - fatigue detection)
- Steering wheel: Multifunction steering wheel in leather, with shift paddles, heated
- Mesh partition
- Package: "Business" package (2 USB-C ports in the front, 1 USB-C charging port on the rear center console - App-Connect including App-Connect Wireless for Apple CarPlay and Android Auto - Automatically heated front windshield washer nozzles - Headlight cleaning system - "Comfort" telephone interface with inductive charging function - Heated front seats)
- Wheels: Light alloy (4) "Nizza" 7 J x 18 (4 light alloy wheels "Nizza" 7 J x 18 in Dark Graphite, high-sheen surface - AirStop tires 235/55 R 18, rolling resistance optimized - wheel locks with enhanced theft protection)
- Rear View rear view camera including Park Assist and parking aid (acoustic warning signals for obstacles in the front and rear areas - displayed on the radio or navigation system - automatically steers the vehicle into parallel and perpendicular parking spaces and also parks out of parallel parking spaces - camera image on the radio or navigation system display shows the area behind the vehicle)
- Area View (including rear view camera)

Brief expert findings

Documents submitted	At the time of the inspection, the registration certificate Part 2 (letter) was available, but the registration certificate Part 1 (certificate) was not. (Copy)
VIN comparison	The vehicle identification number (VIN) was read from the vehicle and its conformity with the submitted documents was verified during the inspection by the undersigned.
Inspection	The inspection conditions were sufficient for the assessment of the vehicle. Lifting equipment and a pit were available for examining the vehicle.
Test drive	No test drive/maneuvering was carried out during the inspection of the vehicle.
Engine function test	An engine test run was performed.

Value reducing factors

No.	Component group	Description
1	Equipment	Tirefit filler - Expired - Replace
2	Boot lid / rear door	Boot lid - dent(s) - Smart repair
3	Wing mirror - right side	Cap - Scratch(es) - Paint
4	Rear bumper	Rear bumper - Scratch(es) - Paint
5	Front bumper	Front bumper - Scratch(es) - Paint
6	Vehicle glazing	Windscreen with lane departure assistant - Damaged - Replace
7	Trim / covers	Roof lining - Damaged - Replace

Wear and tear

No.	Component group	Description
1	Trim / covers	Boot lid - interior trim - Scratch(es) - No deduction
2	Bonnet	Bonnet - Stone chips - No deduction



No.	Component group	Description
3	Wheel / tyres	Alloy rim - rear right side - Scratch(es) - No deduction
4	Door - rear left side	Door - Dent / paintcoat damage - No deduction
5	Door - rear left side	Door edge - Scratch(es) - No deduction

The vehicle shows signs of wear commensurate with its age and use.

Previous damages

No.	Previous damage	Extent of damage (Net)
1	Side - left, Provided by user / customer, from 18 Jul 2025	1.440,49 €

Order/Scope of order

The order was placed to prepare a sales report for the vehicle described. This includes the following:

- Description of core relevant information about the vehicle
- Documentation of equipment features
(Delivery by third-party service providers)
- Documentation of damage, defects, missing parts
- Documentation of previous damage, unrepaired previous damage, repainting
- a brief visual or functional inspection of the equipment details if possible.
(Functional tests of driver assistance systems are not included in the scope of services!)
- a photo documentation of the vehicle

Basis for the order

This product is based on the Alphabet Fuhrpark GmbH guidelines for vehicle returns and valuations. The expert makes the explicit findings in each individual case objectively within the framework of the specified standards based on his or her own expertise.

The vehicle inspection takes place in a disassembled state.

Damage or defects that can only be detected during disassembly/diagnosis work or through advanced knowledge remain within the scope of the prognosis risk. An extended risk exists for concealed defects caused by fraudulent deception and not identifiable by the expert.

Damage or defects resulting from normal use or wear and tear of the vehicle will be accepted according to the applicable standard.

There was no explicit identification or monetary consideration of the expected features within the product.

Features which in their nature and severity slightly exceed normal use but do not constitute unacceptable damage will be documented and identified under signs of use if necessary.

Damage or defects which, according to the underlying standard, can no longer be attributed to normal use or wear and tear are listed in the product under "Depreciating Factors".

Depending on the product specification, a monetary ID can be provided. If this takes place, the costs can be 100% d or pro rata depending on the vehicle's age and mileage.

Previous damages

According to available information previous damages were repaired at the vehicle. Traces of repairs, which allow conclusions about the area of repair, were not recognizable during the inspection.

Comments

- Winterradsatz ist kein Bestandteil des Auslieferumfangs



Figure 1: Diagonal front (left)



Figure 2: Diagonal front (right)



Figure 3: Diagonal rear (left)



Figure 4: Diagonal rear (right)



Figure 5: Interior - front



Figure 6: Interior - rear



Figure 7: Instrument cluster



Figure 8: Instrument panel



Figure 9: Interior 360° view



Figure 10: Cargo area

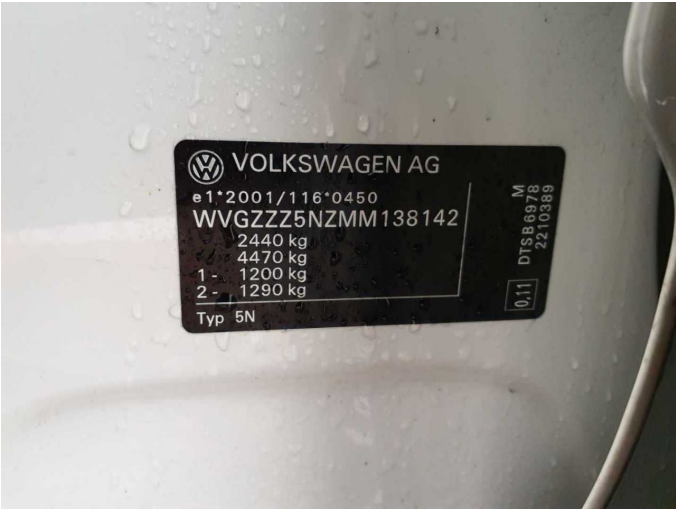


Figure 11: VIN



Figure 12: Mounted tyres



Figure 13: Documents

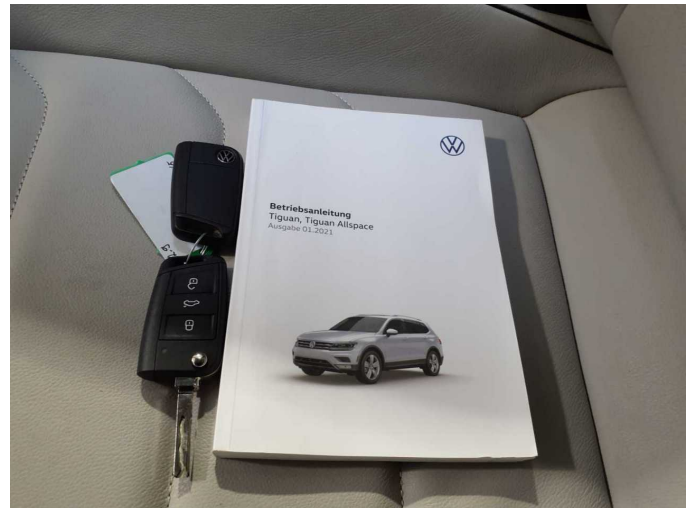


Figure 14: Documents



Figure 15: Additional tyres



Figure 16: Navigation



Figure 17: Misc.



Figure 18: Misc.



Figure 19: Misc.



Figure 20: Misc.



Figure 21: Misc.



Figure 22: Misc.



Figure 23: Misc.



Figure 24: Misc.



Figure 25: Misc.

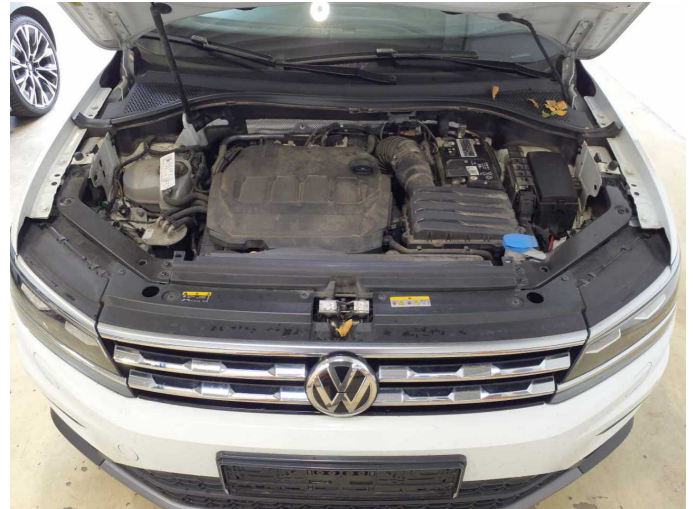


Figure 26: Misc.



Figure 27: Misc.



Figure 28: Misc.



Figure 29: Misc.



Figure 30: Misc.



Figure 31: Misc.



Figure 32: Misc.



Figure 33: Misc.



Damage 1: Equipment: Tirefit filler - Expired - Replace



Damage 2: Boot lid / rear door: Boot lid - dent(s) - Smart repair



Damage 2: Boot lid / rear door: Boot lid - dent(s) - Smart repair



Damage 3: Wing mirror - right side: Cap - Scratch(es) - Paint



Damage 3: Wing mirror - right side: Cap - Scratch(es) - Paint



Damage 4: Rear bumper: Rear bumper - Scratch(es) - Paint



Damage 4: Rear bumper: Rear bumper - Scratch(es) - Paint



Damage 4: Rear bumper: Rear bumper - Scratch(es) - Paint



Damage 4: Rear bumper: Rear bumper - Scratch(es) - Paint



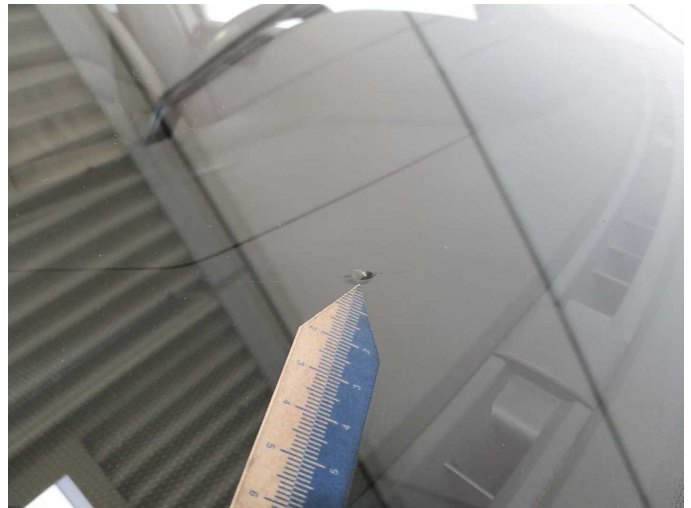
Damage 5: Front bumper: Front bumper - Scratch(es) - Paint



Damage 5: Front bumper: Front bumper - Scratch(es) - Paint



Damage 6: Vehicle glazing: Windscreen with lane departure assistant - Damaged - Replace



Damage 6: Vehicle glazing: Windscreen with lane departure assistant - Damaged - Replace



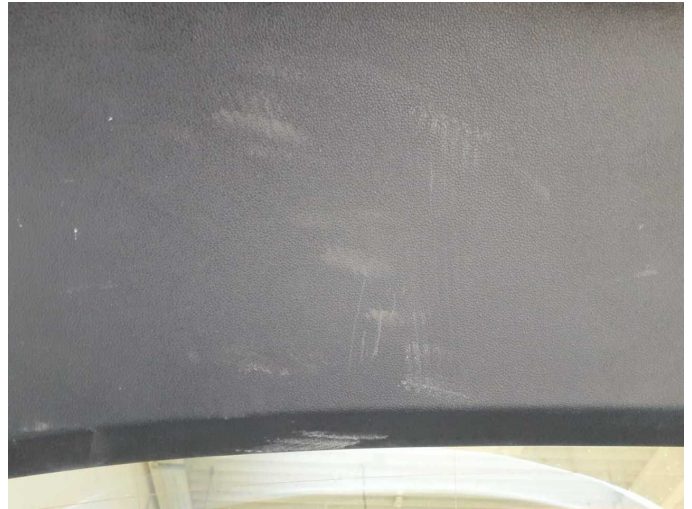
Damage 7: Trim / covers: Roof lining - Damaged - Replace



Damage 7: Trim / covers: Roof lining - Damaged - Replace



Wear and tear 1: Trim / covers: Boot lid - interior trim - Scratch(es) - No deduction



Wear and tear 1: Trim / covers: Boot lid - interior trim - Scratch(es) - No deduction



Wear and tear 1: Trim / covers: Boot lid - interior trim - Scratch(es) - No deduction



Wear and tear 1: Trim / covers: Boot lid - interior trim - Scratch(es) - No deduction



Wear and tear 2: Bonnet: Bonnet - Stone chips - No deduction



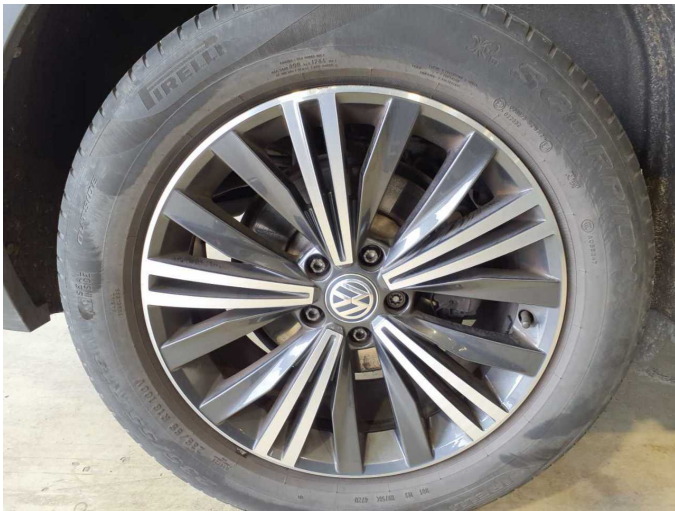
Wear and tear 2: Bonnet: Bonnet - Stone chips - No deduction



Wear and tear 2: Bonnet: Bonnet - Stone chips - No deduction



Wear and tear 2: Bonnet: Bonnet - Stone chips - No deduction



Wear and tear 3: Wheel / tyres: Alloy rim - rear right side - Scratch(es) - No deduction



Wear and tear 3: Wheel / tyres: Alloy rim - rear right side - Scratch(es) - No deduction



Wear and tear 4: Door - rear left side: Door - Dent / paintcoat damage - No deduction



Wear and tear 4: Door - rear left side: Door - Dent / paintcoat damage - No deduction



Wear and tear 5: Door - rear left side: Door edge - Scratch(es) - No deduction



Wear and tear 5: Door - rear left side: Door edge - Scratch(es) - No deduction



Wartungshistorie

(gemäß Auftraggeber Informationen)

Fahrgestellnummer: WVGZZZ5NZMM138142
Hersteller / Modell: VOLKSWAGEN VW Tiguan Allspace 2.0 TDI SCR DSG
Comfortline

Datum	KM-Stand	Beschreibung
25.07.2025	166.044	Bremse Sonstiges; Bremsflüssigkeit; Bremsflüssigkeit ern; Bremsklötze vorne; Bremsscheiben vorne; Motoröl b. Wartung; Ölfilter ern; Regelwartungsdienst; Reparatur Sonstiges; Wartung Sonstiges
06.12.2024	131.879	Getriebeöl ern/prüfen; Motoröl b. Wartung; Ölfilter ern; Regelwartungsdienst; Wartung Sonstiges
30.08.2024	0	HU + AU
16.04.2024	101.419	Bremse Sonstiges; Bremsklötze hinten; Bremsscheiben hinten; Kraftstofffilter ern; Luftfiltereinsatz ern; Motoröl b. Wartung; Ölfilter ern; Regelwartungsdienst; Systemtest/Eigendiagnose; Wartung Sonstiges
12.12.2023	83.440	Reparatur Sonstiges; Systemtest/Eigendiagnose; Wasserpumpe ern; Zahnriemen/Steuerkett ern
26.07.2023	71.227	Bremsflüssigkeit; Bremsflüssigkeit ern; Motoröl b. Wartung; Ölfilter ern; Regelwartungsdienst; Wartung Sonstiges
22.11.2022	34.655	Motoröl b. Wartung; Ölfilter ern; Regelwartungsdienst; Wartung Sonstiges