



VOLKSWAGEN Tiguan

Tiguan Allspace 2.0 TDI SCR 4Motion DSG

VIN NO WVGZZZ5NZLM043634
Registration Number NZLM043634



MOT Date	Number of Owners	Number of Keys	Odometer Reading
-	-	2	193408 km
Last Service	Last Service Mileage	First Registration Date	Country First Registered
-	-	2019-09-19	-

Inspection Report Summary

Customer	BCA Online	Report Number	P20250902124127
Inspection Date / Place	2025-09-02 / BCA Heidenheim	Cosmetic Grade	4

Vehicle Summary

Vehicle Condition	Runner	VAT Type	Qualifying
Fuel Type	Diesel	Road Worthy	Yes
Colour	White	Engine Size (cc)	1968
Engine Size	2.0	No of Doors	5
Body Type	SUV	Drive Train	All-Wheel-Drive permanent
Seat Colour		No of Seats	5
Seat Covering Name	Schwarz / dunkelblau	Seat Covering	Cloth
Charging Cables		NEDC CO2 Rating (q/km)	153
Gearbox Type	Automatic		

Vehicle History & Documents

Service Book Available	Missing	Next Service Mileage	km
Previous Usage		Imported	No
Manufacturer Warrenty			







Equipment

360°camera	Alloys wheels	Cruise control	Digitaldashboard
Front parking sensors	Headlamp wash/wipe	Remote adjusting wing mirrors	Roof rails
Stability control	CD Player	Electrictailgate	Leather steering wheel
Radio	Airbag Status	Anti-lock braking	Diesel particulate filter
Front fog lamps	Head up Display	Heated wing mirrors	Remote central locking
Satellite navigation	Xenon headlamps	Electrically folding wing mirrors	Laneassist
Privacy glass	Rear parking sensors		

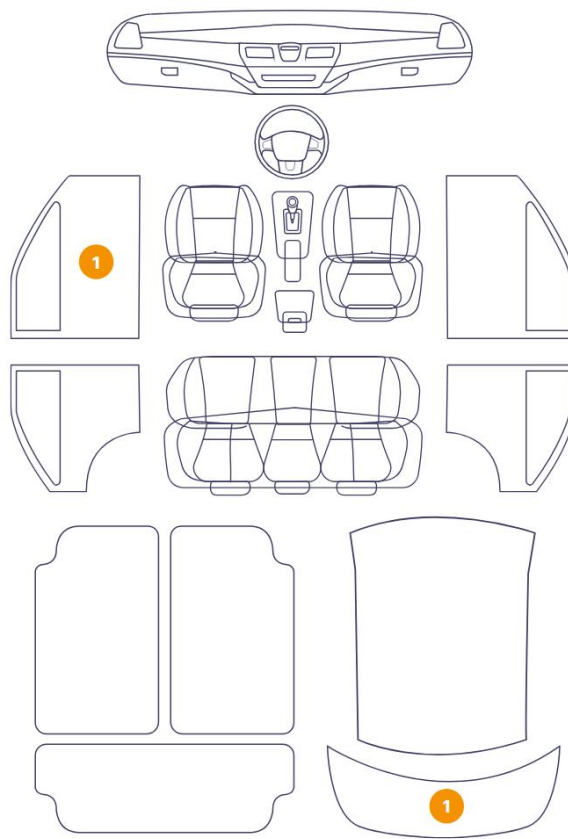
Equipment Details

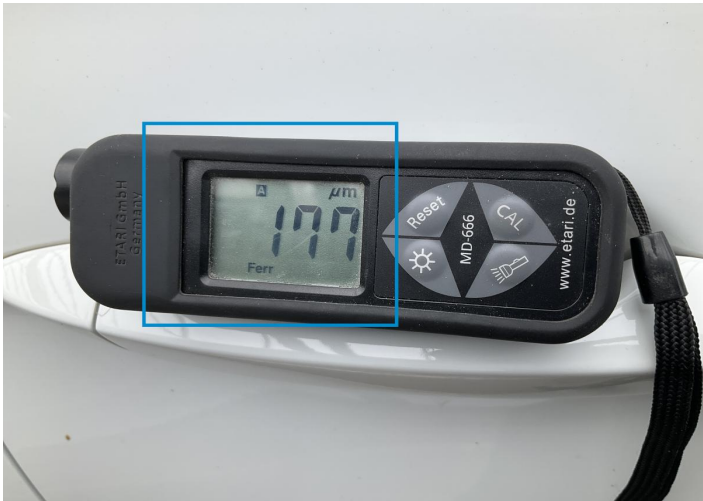
Air Conditioning	Dual Zone Climate Control	Alloy Wheel Size	17
Extra Wheel / Tyre Set	Summer Tyres - Alloy	Seat Heating	Front

Wheels & Tyres

Right Front Tyre Depth	5	Left Front Tyre Depth	5
Right Rear Tyre Depth	7	Left Rear Tyre Depth	7
Extra Wheel - 1 Tyre Depth	5	Extra Wheel - 2 Tyre Depth	5
Extra Wheel - 3 Tyre Depth	2	Extra Wheel - 4 Tyre Depth	3

2 Schäden

6/10 - Report Number P20250902124127



1. Side Panel / Back Right
Paint / Poor Previous Repair -



2. Side Panel / Back Left
Paint / Poor Previous Repair -



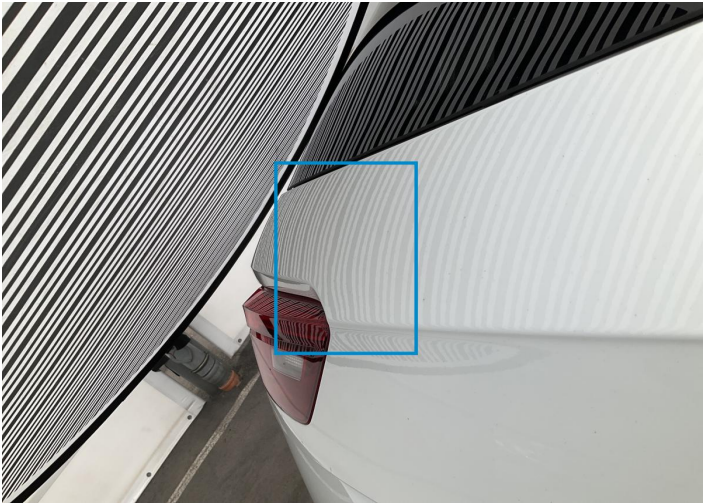
3. Rim / Front Left
Out of Bodywork / Scratch -



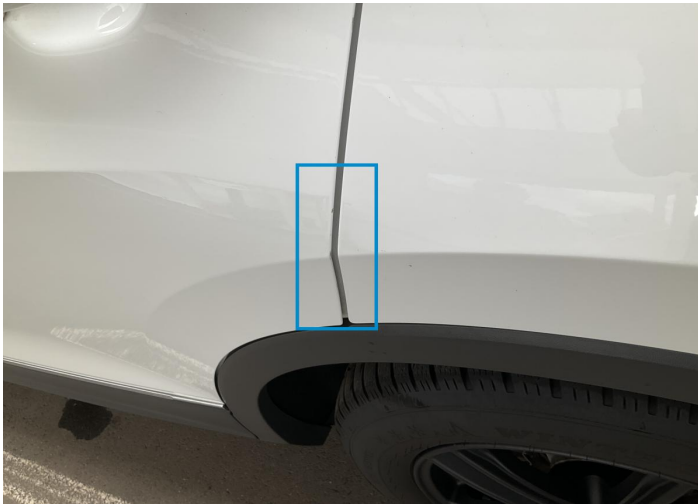
4. Hood
Paint / Stone Chip -



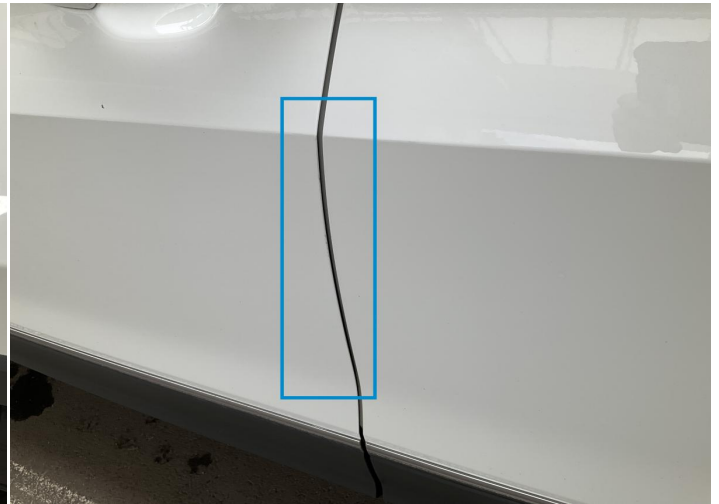
5. Bumper / Back
Paint / Scratch / Scuff -



6. Tailgate
Bodywork / Dent / Dent -



7. Door / Back Left
Paint / Scratch / Scuff -



8. Door / Front Left
Paint / Scratch / Scuff -



9. Panel Filling / Front Left
Interior / Missing -



10. Tailgate Upholstery / Back
Interior / Scratched -

Mechanical Condition

Control Lights

Display Defect	✓	ABS Warning Light	✓
ESP Fault/Traction Control Malfunction Light	✓	Diesel Particulate Filter Light	✓
Airbag Warning Light	✓	Oil Pressure Warning Light	✓
Brake Warning Light	✓	Power Steering Warning Light	✓
Alternator / Battery	✓	All - wheel Drive	✓
No Dashboard Lights	✓	Tire Pressure Monitoring System	✓

Equipments Test

Central Locking	✓	Main & Spare Keys Functioning	✓
Electric Windows	✓	Navigation System	✓
Audio Equipment	✓	Parking Sensors / Cameras Functioning	✓
AC / Heating System	✓	Other Equipments	✓

Engine

Engine Status / EML	✓	Engine Leak Visible	NA
Engine Starts	✓		

Gearbox

Gear Box	✓
----------	---

Levels

Brakes Fluid	✓	Coolant Fluid	✓
--------------	---	---------------	---

Test Drive Inspection

Steering Wheel			
Steering Noise / Anomaly		✓	
Engine			
Engine Noise	✓	The Gears Scratch / Skip / Abnormal Operation	✓
Fume Quantity	✓	Power Loss	✓
Brake			
Brake System Anomaly		✓	
General			
Test Driven Status		✓	
✓ <i>No troubles detected, good condition or correct tests, according to vehicle age and mileage</i>			
! <i>Damages or malfunction detected that requires repairs by the buyer</i>			
NA <i>Not applicable</i>			
= <i>Not tested</i>			

Disclaimer

Please also note the "UserGuide condition report", which shows the scope of the vehicle description.

[User Guide](#)