



VOLKSWAGEN Tiguan

Tiguan 1.5 TSI ACT OPF

VIN NO WVGZZZ5NZKW892099
Registration Number NZKW892099



MOT Date	Number of Owners	Number of Keys	Odometer Reading
-	1	2	117023 km
Last Service	Last Service Mileage	First Registration Date	Country First Registered
-	-	2019-05-09	-

Inspection Report Summary

Customer	BCA Online	Report Number	P20250924093943
Inspection Date / Place	2025-09-24 / BCA Berlin	Cosmetic Grade	3

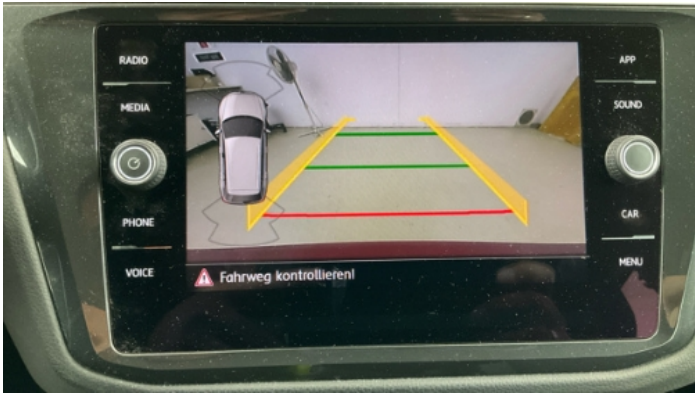
Vehicle Summary

Vehicle Condition	Runner	VAT Type	Margin
Fuel Type	Petrol	Road Worthy	Yes
Colour	Red	Engine Size (cc)	1498
Engine Size	1.5	No of Doors	5
Body Type	SUV	Drive Train	Front
Seat Colour		No of Seats	5
Seat Covering Name	Anthrazit	Seat Covering	Cloth
Charging Cables		NEDC CO2 Rating (q/km)	130
Gearbox Type	Manual		

Vehicle History & Documents

Service Book Available	Missing	Next Service Mileage	km
Previous Usage		Imported	No
Manufacturer Warrenty			







Equipment

USB Socket	Airbag Status	Anti-lock braking	Fatiguewarningsystem
Front parking sensors	Parking Assistance	Remote central locking	Roof rails
Stability control	Electrically folding wing mirrors	Laneassist	Radio
Adaptivecruisecontrol	Alloys wheels	Bluetooth telephone interface	Front fog lamps
Heated wing mirrors	Remote adjusting wing mirrors	Reversing Camera	Split folding rear seats
CD Player	Emergencybrakeassist	Leather steering wheel	Rear parking sensors

Equipment Details

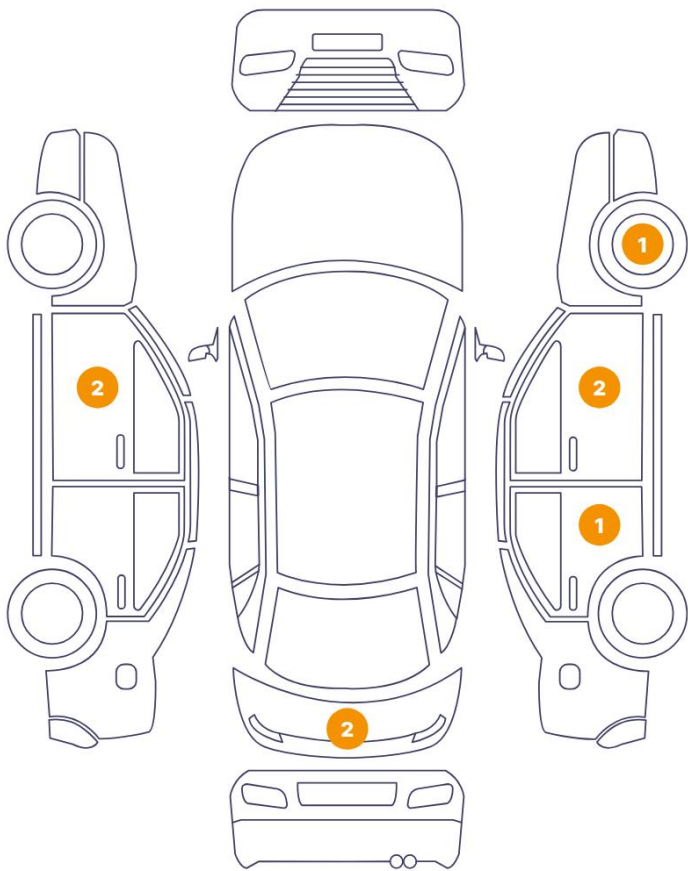
Air Conditioning	Three Zone Climate Control	Alloy Wheel Size	17
Seat Heating	Front		

Wheels & Tyres

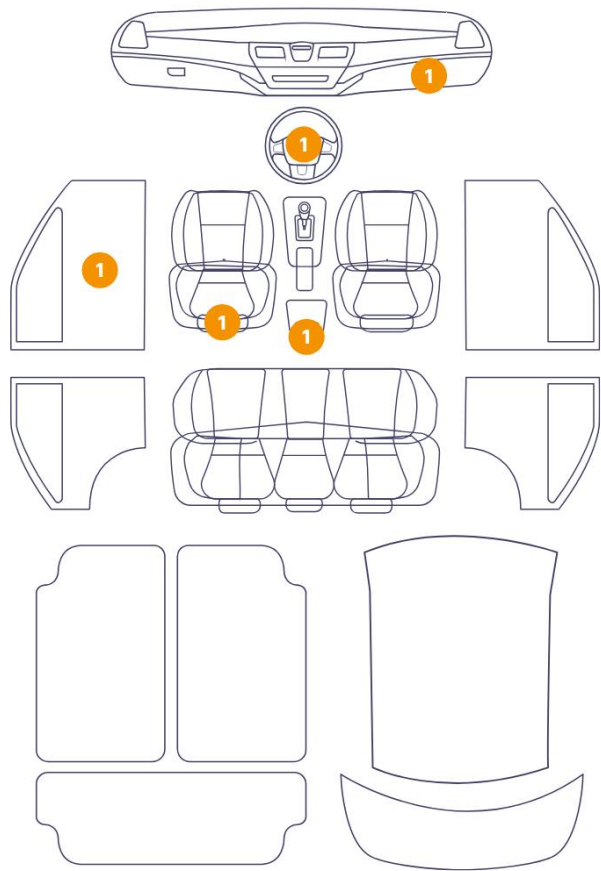
Right Front Tyre Depth	5	Left Front Tyre Depth	5
Right Rear Tyre Depth	5	Left Rear Tyre Depth	5

Cosmetic Damage

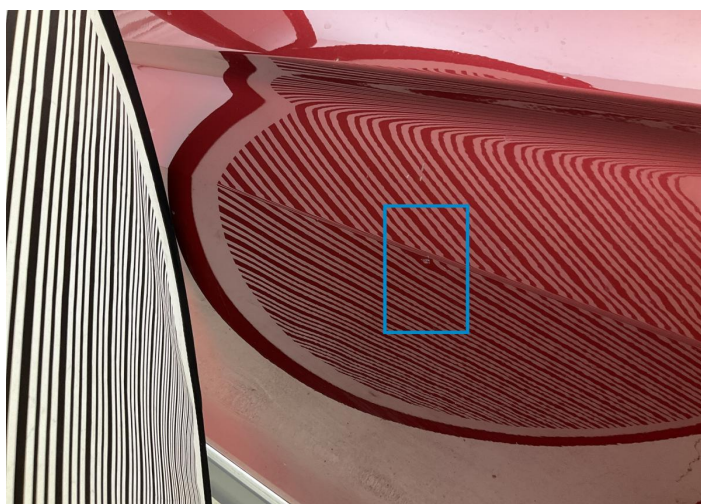
8 Schäden



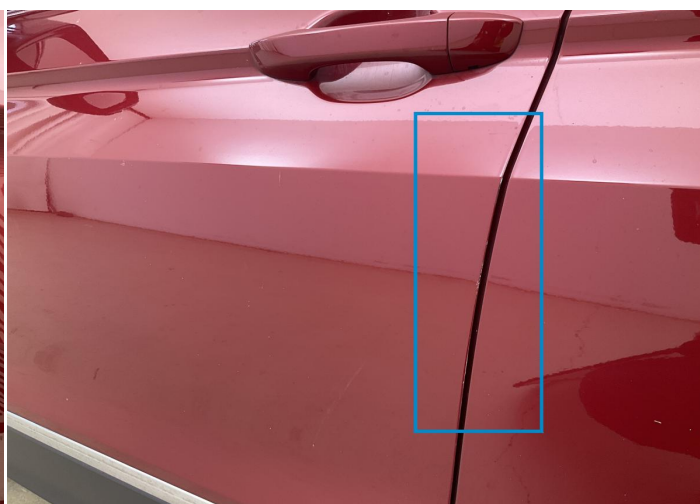
5 Schäden



Component		Damage	Comments
1	Door / Front Left	Bodywork / Dent / Dent	
2	Door / Front Left	Paint / Scratch / Scuff	
3	Tailgate	Bodywork / Dent / Dent	
4	Tailgate	Paint / Scratch / Scuff	
5	Door / Back Right	Bodywork / Dent / Dent	
6	Door / Front Right	Bodywork / Dent / Dent	
7	Mirror Repeater / Right	Glass Break	
8	Rim / Front Right	Out of Bodywork / Scratch	
9	Panel Filling / Front Left	Interior / Scratched	
10	Steering Wheel / Front	Interior / Scratched	
11	Seat / Front Left	Interior / Scratched	
12	Aeration Grid / Back Center	Interior / Scratched	



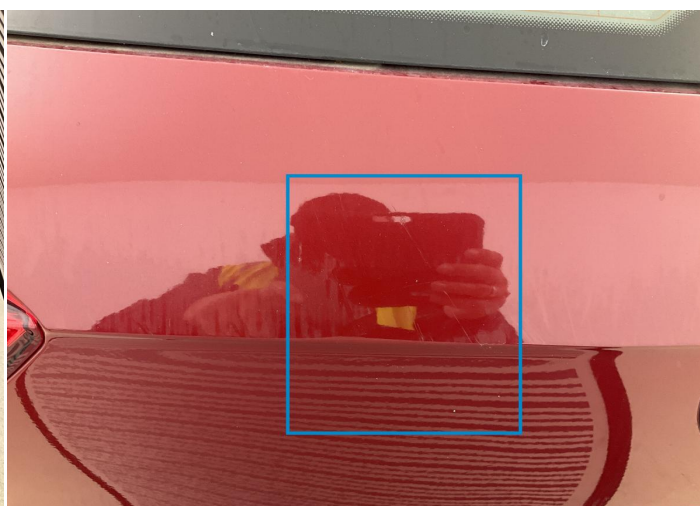
1. Door / Front Left
Bodywork / Dent / Dent -



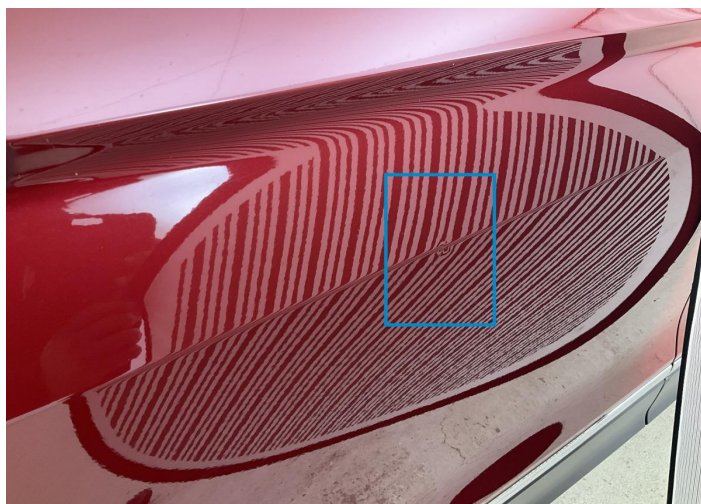
2. Door / Front Left
Paint / Scratch / Scuff -



3. Tailgate
Bodywork / Dent / Dent -



4. Tailgate
Paint / Scratch / Scuff -



5. Door / Back Right
Bodywork / Dent / Dent -



6. Door / Front Right
Bodywork / Dent / Dent -



7. Mirror Repeater / Right
Glass Break -



8. Rim / Front Right
Out of Bodywork / Scratch -



9. Panel Filling / Front Left
Interior / Scratched -



10. Steering Wheel / Front
Interior / Scratched -



11. Seat / Front Left
Interior / Scratched -



12. Aeration Grid / Back Center
Interior / Scratched -



13. Center Console
Interior / Scratched -

Mechanical Condition

Control Lights

Display Defect	✓	Airbag Warning Light	✓
ABS Warning Light	✓	ESP Fault/Traction Control Malfunction Light	✓
Oil Pressure Warning Light	✓	Brake Warning Light	✓
Power Steering Warning Light	✓	Alternator / Battery	✓
No Dashboard Lights	✓	Service Light	⚠
Tire Pressure Monitoring System	✓		

Engine

Engine Status / EML	✓	Engine Leak Visible	✓
Engine Starts	✓		

Equipments Test

Central Locking	✓	Electric Windows	✓
Audio Equipment	✓	AC / Heating System	✓
Main & Spare Keys Functioning	⚠	Parking Sensors / Cameras Functioning	✓

Gearbox

Gear Box	✓
----------	---

Levels

Brakes Fluid	✓	Coolant Fluid	✓
--------------	---	---------------	---

Test Drive Inspection

Steering Wheel

Steering | Noise / Anomaly

Engine

Engine Noise The Gears Scratch / Skip / Abnormal Operation

Fume Quantity Power Loss

Brake

Brake System Anomaly

Clutch

Clutch Functioning

General

Test Driven Status

- No troubles detected, good condition or correct tests, according to vehicle age and mileage
- Damages or malfunction detected that requires repairs by the buyer
- Not applicable
- Not tested

Disclaimer

Please also note the "UserGuide condition report", which shows the scope of the vehicle description. [User Guide](#)