



VOLKSWAGEN Tiguan

Tiguan 1.4 TSI DSG BlueMotion Technology



VIN NO WVGZZZ5NZEW044258
Registration Number NZEW044258

MOT Date	Number of Owners	Number of Keys	Odometer Reading
2026-10-01	1	1	50761 km
Last Service	Last Service Mileage	First Registration Date	Country First Registered
-	-	2013-10-29	Germany

Inspection Report Summary

Customer	BCA Online	Report Number	P20251006073147
Inspection Date / Place	2025-10-06 / HARTMANN Compound-Professionals GmbH Dorfmark	Cosmetic Grade	3

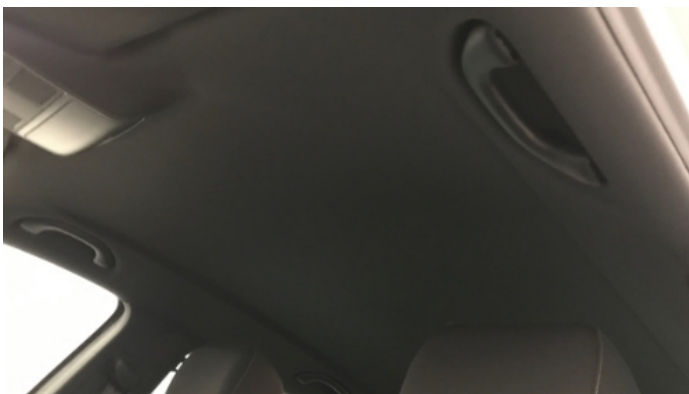
Vehicle Summary

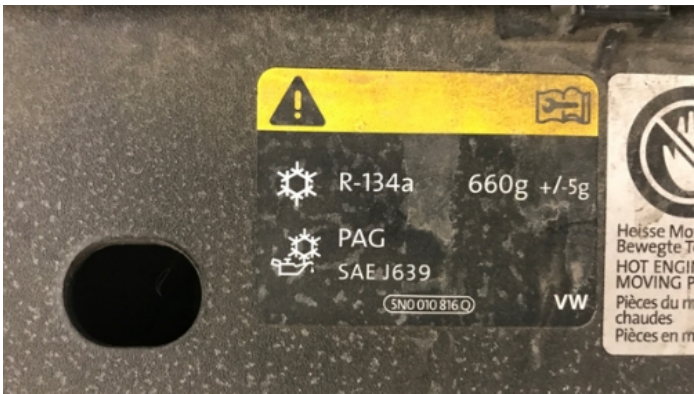
Vehicle Condition	Runner	VAT Type	Margin
Fuel Type	Petrol	Road Worthy	Yes
Colour	Grey	Engine Size (cc)	1390
Engine Size	1.4	No of Doors	5
Body Type	SUV	Drive Train	Front
Seat Colour		No of Seats	5
Seat Covering Name	Grau	Seat Covering	Cloth
Charging Cables		NEDC CO2 Rating (q/km)	164
Gearbox Type	Automatic		

Vehicle History & Documents

Service Book Available	Missing	Next Service Mileage	km
Previous Usage		Imported	No
Manufacturer Warrenty			







Equipment

Airbag Status	Anti-lock braking	Front parking sensors	Remote adjusting wing mirrors
Stability control	Leather steering wheel	Rear parking sensors	Alloys wheels
Auxiliary Socket	Heated wing mirrors	Remote central locking	Central locking
Radio			

Equipment Details

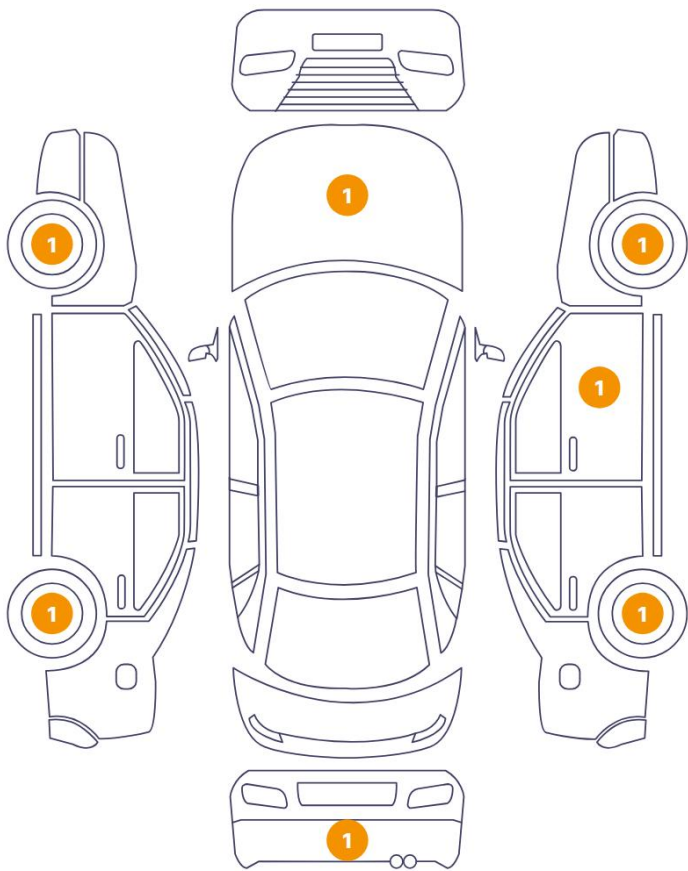
Air Conditioning	Dual Zone Climate Control	Alloy Wheel Size	17
Extra Wheel / Tyre Set	Winter Tyres - Steel	Seat Heating	Front

Wheels & Tyres

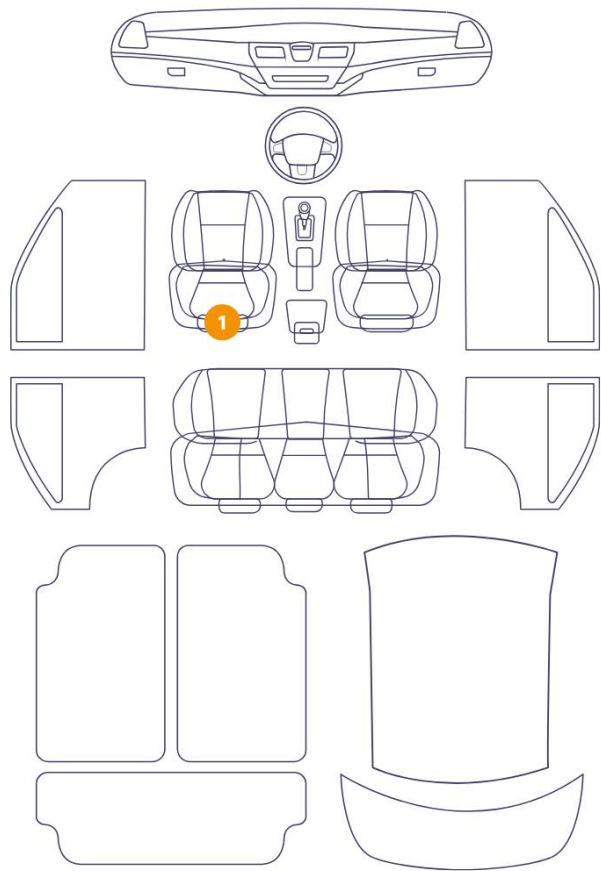
Extra Wheel - 1 Tyre Depth	6	Extra Wheel - 2 Tyre Depth	6
Extra Wheel - 3 Tyre Depth	6	Extra Wheel - 4 Tyre Depth	5
Right Front Tyre Depth	4	Left Front Tyre Depth	4
Right Rear Tyre Depth	5	Left Rear Tyre Depth	5

Cosmetic Damage

7 Damages



1 Damages



Component		Damage	Comments
1	Hood	Paint / Stone Chip	
2	Rim / Front Right	Out of Bodywork / Scratch	
3	Mirror / Front Right	Bodywork / Dent / Deformation	
4	Rim / Back Right	Out of Bodywork / Scratch	
5	Bumper / Back	Paint / Scratch / Scuff	
6	Rim / Back Left	Out of Bodywork / Scratch	
7	Rim / Front Left	Out of Bodywork / Scratch	
8	Seat / Front Left	Interior / Dirty	



1. Hood
Paint / Stone Chip -



2. Rim / Front Right
Out of Bodywork / Scratch -



3. Mirror / Front Right
Bodywork / Dent / Deformation -



4. Rim / Back Right
Out of Bodywork / Scratch -



5. Bumper / Back
Paint / Scratch / Scuff -



6. Rim / Back Left
Out of Bodywork / Scratch -



7. Rim / Front Left
Out of Bodywork / Scratch -



8. Seat / Front Left
Interior / Dirty -

Mechanical Condition

Control Lights

ABS Warning Light	✓	ESP Fault/Traction Control Malfunction Light	✓
Airbag Warning Light	✓	Oil Pressure Warning Light	✓
Brake Warning Light	✓	Power Steering Warning Light	✓
Alternator / Battery	✓	No Dashboard Lights	✓
Display Defect	✓	Service Light	✓

Engine

Engine Status / EML	✓	Engine Leak Visible	✓
Engine Starts	✓		

Equipments Test

Audio Equipment	✓	AC / Heating System	✓
Parking Sensors / Cameras Functioning	✓	Central Locking	✓
Main & Spare Keys Functioning	✓	Electric Windows	✓
Other Equipments	✓		

Levels

Brakes Fluid	✓	Coolant Fluid	✓
--------------	---	---------------	---

Hybrid/EV

Hybrid System Fault	NA
---------------------	----

Test Drive Inspection

Steering Wheel			
Steering Noise / Anomaly		✔	
Engine			
Engine Noise	✔	The Gears Scratch / Skip / Abnormal Operation	✔
Fume Quantity	✔	Power Loss	✔
Brake			
Brake System Anomaly		✔	
Clutch			
Clutch Functioning		NA	
General			
Test Driven Status		✔	
✔ No troubles detected, good condition or correct tests, according to vehicle age and mileage			
! Damages or malfunction detected that requires repairs by the buyer			
NA Not applicable			
☐ Not tested			

Disclaimer

Please also note the "UserGuide condition report", which shows the scope of the vehicle description.

[User Guide](#)