



VOLKSWAGEN Tiguan

Tiguan 1.4 TSI BlueMotion Technology

VIN NO WVGZZZ5NZCW586323
Registration Number NZCW586323



MOT Date	Number of Owners	Number of Keys	Odometer Reading
2025-06-01	3	2	158569 km
Last Service	Last Service Mileage	First Registration Date	Country First Registered
-	-	2012-06-01	Germany

Inspection Report Summary

Customer	BCA Online	Report Number	P20250604081442
Inspection Date / Place	2025-06-04 / BCA Oberndorf	Cosmetic Grade	5

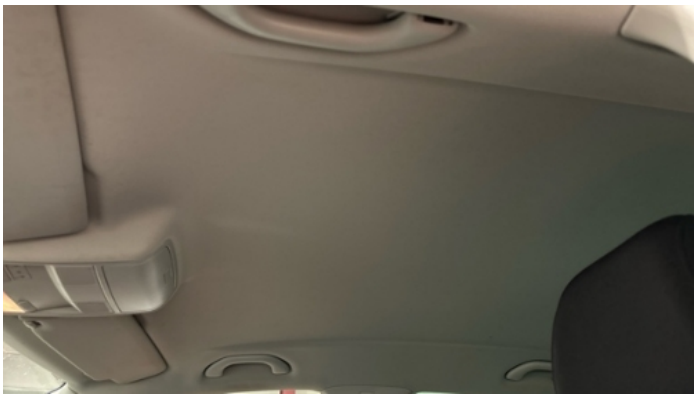
Vehicle Summary

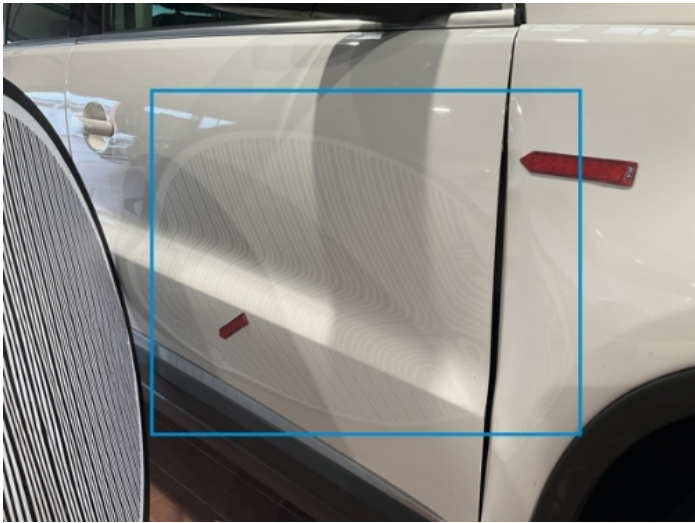
Vehicle Condition	Runner	VAT Type	Margin
Fuel Type	Petrol	Road Worthy	No
Colour	White	Engine Size (cc)	1390
Engine Size	1.4	No of Doors	5
Body Type	SUV	Drive Train	Front
Seat Colour		No of Seats	5
Seat Covering Name	Schwarz	Seat Covering	Cloth
Charging Cables		NEDC CO2 Rating (q/km)	152
Gearbox Type	Manual		

Vehicle History & Documents

Service Book Available	Missing	Next Service Mileage	km
Previous Usage		Imported	No
Manufacturer Warrenty			







Equipment

Tinted Glass	Airbag Status	Anti-lock braking	Cruise control
Heated wing mirrors	Remote central locking	Split folding rear seats	Central locking
Radio	Tow ball	Alloys wheels	Auxiliary Socket
Front fog lamps	Remote adjusting wing mirrors	Roof rails	Stability control
Leather steering wheel	Rear parking sensors		

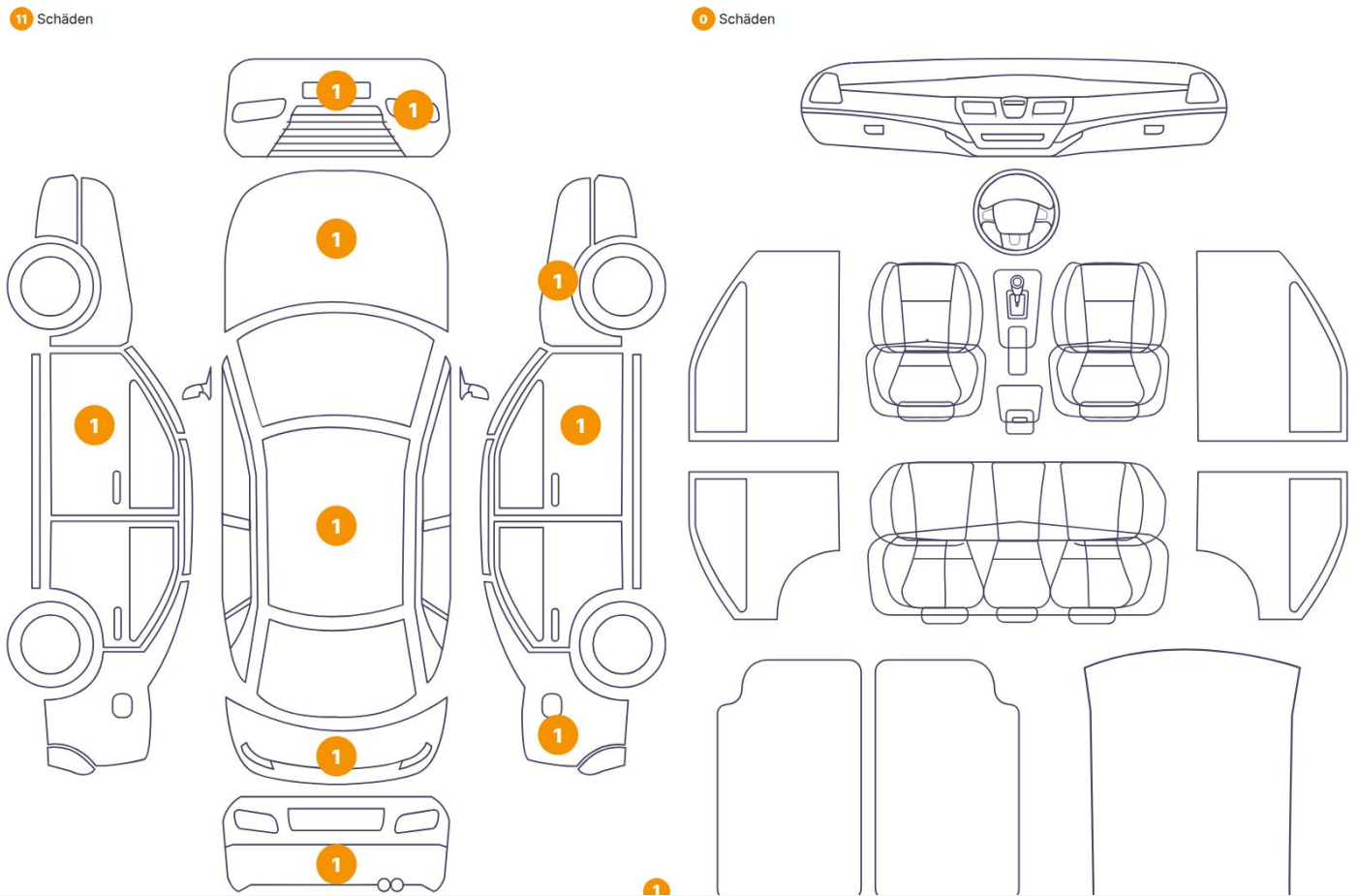
Equipment Details

Tow Ball Type	Pivoted	Air Conditioning	Dual Zone Climate Control
Alloy Wheel Size	17	Extra Wheel / Tyre Set	Winter Tyres - Steel

Wheels & Tyres

Right Front Tyre Depth	8	Left Front Tyre Depth	8
Right Rear Tyre Depth	6	Left Rear Tyre Depth	6
Extra Wheel - 1 Tyre Depth	5	Extra Wheel - 2 Tyre Depth	5

Cosmetic Damage



Component		Damage	Comments
1	Fender / Front Right	Bodywork / Dent / Dent	
2	Bumper / Front	Bodywork / Breakage / Crack	
3	Halogen Headlight / Front - Right	Bodywork / Breakage / Crack	
4	Other	Anomalyon Element	
5	Hood	Paint / Scratch / Scuff	
6	Roof	Paint / Scratch / Scuff	
7	Mirror / Front Left	Paint / Scratch / Scuff	
8	Bumper / Back	Bodywork / Breakage / Crack	
9	Rear Trunk	Bodywork / Dent / Dent	
10	Side Panel / Back Right	Paint / Scratch / Line	
11	Door / Front Right	Bodywork / Dent / Dent	



1. Fender / Front Right
Bodywork / Dent / Dent -



2. Bumper / Front
Bodywork / Breakage / Crack -



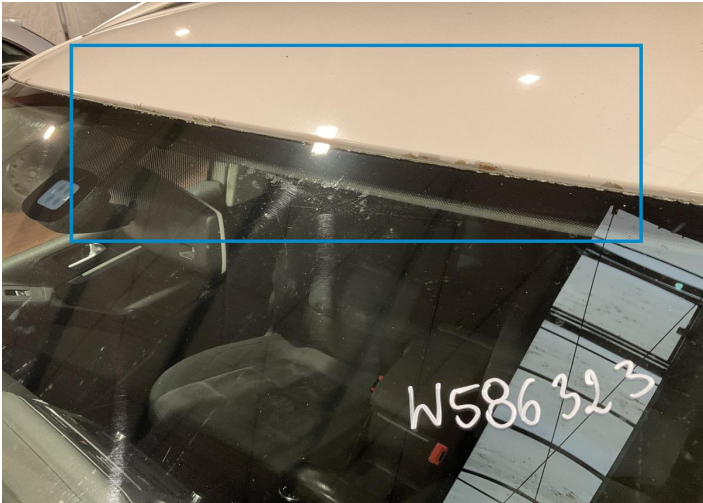
3. Halogen Headlight / Front - Right
Bodywork / Breakage / Crack -



4.
Anomaly Element -



5. Hood
Paint / Scratch / Scuff -



6. Roof
Paint / Scratch / Scuff -



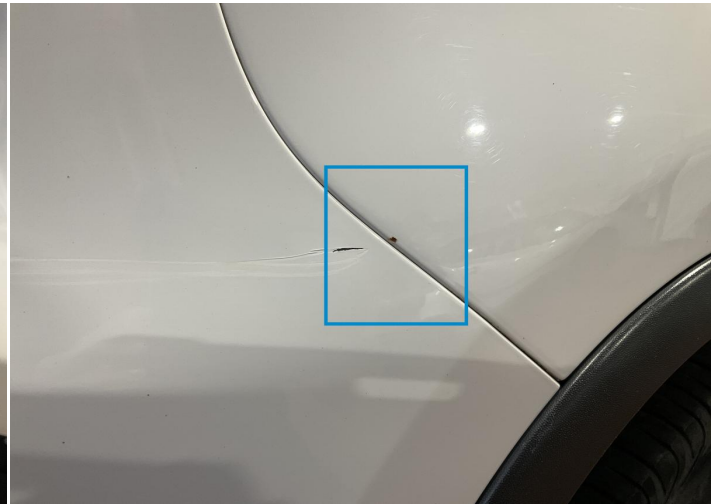
7. Mirror / Front Left
Paint / Scratch / Scuff -



8. Bumper / Back
Bodywork / Breakage / Crack -



9. Rear Trunk
Bodywork / Dent / Dent -



10. Side Panel / Back Right
Paint / Scratch / Line -



11. Door / Front Right
Bodywork / Dent / Dent -

Mechanical Condition

Control Lights

Display Defect	✓	Service Light	✓
ABS Warning Light	✓	ESP Fault/Traction Control Malfunction Light	✓
Airbag Warning Light	✓	Oil Pressure Warning Light	✓
Brake Warning Light	✓	Power Steering Warning Light	✓
Alternator / Battery	✓	No Dashboard Lights	✓
Tire Pressure Monitoring System	✓		

Equipments Test

Central Locking	✓	Main & Spare Keys Functioning	✓
Electric Windows	✓	Audio Equipment	✓
Parking Sensors / Cameras Functioning	✓	Other Equipments	✓

Engine

Engine Status / EML	✓	Engine Leak Visible	✓
Engine Starts	✓		

Gearbox

Gear Box	✓
----------	---

Levels

Brakes Fluid	✓	Coolant Fluid	✓
--------------	---	---------------	---

Test Drive Inspection

Steering Wheel			
Steering Noise / Anomaly		✓	
Engine			
Engine Noise	✓	The Gears Scratch / Skip / Abnormal Operation	✓
Fume Quantity	✓	Power Loss	✓
Clutch			
Clutch Functioning		✓	
Brake			
Brake System Anomaly		✓	
General			
Test Driven Status		Not Performed	
✓ <i>No troubles detected, good condition or correct tests, according to vehicle age and mileage</i>			
! <i>Damages or malfunction detected that requires repairs by the buyer</i>			
NA <i>Not applicable</i>			
= <i>Not tested</i>			

Disclaimer

Please also note the "UserGuide condition report", which shows the scope of the vehicle description.

[User Guide](#)