



Expertise

Protocol number: 41154211
Order No. / Reference: 25101073
Inspection date: 20 Aug 2025

Manufacturer: Volkswagen

Model: Tiguan 2.0 TDI SCR DSG Life

VIN: WVGZZZ5N8RW018564



Vehicle details	
Manufacturer / Type / Model / Equipment	
Volkswagen Tiguan 2.0 TDI SCR DSG Life	
Vehicle Identification number	WVGZZZ5N8RW018564
Mileage (Read)	35,971 km
First registration	22 Nov 2023
Number of holders	1
Power / Engine displacement	110 kw / 1,968 ccm
Fuel type / Cylinder	Diesel / 4
Gearbox / Number of gears	Automatic transmission / 7
Type of drive	Front drive
Type of vehicle	SUV
Colour / colour code	Pure white
Doors / Seats	5 / 5
Upholstery type	Cloth
Colour of upholstery	Black-Anthracite



Vehicle details

Maintenance booklet / proof	digital proof / complete	Next maintenance in	17,100 km
Last maintenance on / at	02/2025 at 25,501 km		
Key is / should be	2 / 2	FZG documents	ZB#2 (B) was available (copy), ZB#1 (S) was not available
		Letter No.	GY206592
Previous damage / Accident	None detectable	Repainting	None detectable
Inspection conditions	sufficient	Lifting equipment / pit	yes
Test drive	Not performed	Engine function test	Performed
Manufacturer key number/ type code number	0603 / BZG 32354		
Emission standard	EURO6;WLTP;AP;PI/CI; M, N1 I	Fine dust sticker	
Permitted total weight	2,090 kg	Empty weight	

Tyres

Mounted tyres

#	Tyre size	Type of tyre	Manufacturer	Tread depth
1)	215/65 R17 99V	Summer tyres on Light alloy	Hankook	6mm / 6mm
2)	215/65 R17 99V	Summer tyres on Light alloy	Hankook	6mm / 6mm

Additional tyres

#	Tyre size	Type of tyre	Manufacturer	Tread depth
1)	215/65 R17 103H	Winter tyres on Light alloy	Pirelli	6mm / 6mm
2)	215/65 R17 103H	Winter tyres on Light alloy	Pirelli	6mm / 6mm

Replacement

Typ	Tyre size	Type of tyre	Manufacturer	Tread depth
	Tirefit	Expiration date 06/2027		

Legend: Tread depth information for tires on the left is in the first place, for tires on the right is in the second place on the axle in the direction of travel

Equipment

Standard equipment

- | | |
|--|---|
| <ul style="list-style-type: none"> • Airbag for driver and front passenger including knee airbag on the driver's side • Automatic distance control ACC "stop & go" including speed limiter • Roof rails black • diesel particulate filter • Parking assistance • Electronic stabilization program with counter-steering support • Electric windows front and rear • Front windscreen in laminated safety glass, heat and sound insulating • Transmission: 7-speed DSG • Rear window wiper • ISOFIX anchor points for attaching 2 child seats to the rear seats • Headrests (3) rear • LED reading lights 2 front and 2 rear • Steering wheel: Multifunction steering wheel in leather, with shift paddles • Front center armrest • Fatigue detection • Emergency braking assistant "Front Assist" • Upholstery: Cloth • Radio "Composition" • Radio accessories: 8 speakers • Rain sensor • Wheels: Tires 215/65 R 17, rolling resistance class A • Leather gearshift knob • Electromechanical power steering • Seats: Passenger seat backrest completely foldable • Seats: Comfort seats in the front • Seats: Rear seat bench asymmetrically split • Lane keeping assistant "Lane Assist" • socket, 12-volt • Telephone interface • First aid kit, warning triangle and safety vest • Green thermal insulation glazing, side and rear • Black trim strips | <ul style="list-style-type: none"> • Airbag: Head airbag system for front and rear passengers including front side airbags • Exterior mirrors electrically adjustable and heated • Brake light, third • Decorative inlays "Weave" • tachometer • Electronic parking brake including auto-hold function • Automatic headlight switching with LED daytime running lights • Light Assist high beam control • Pedestrian detection • Luggage compartment light • Rear window heated • Interior mirror automatically dimming • Air Care Climatronic air conditioning system • Instrument cluster with electronic speedometer • Front headrests • LED headlights • Light in the front footwell • Manual headlight range adjustment • Multifunction display "Premium" • Non-smoking version • Emergency call service • Proactive occupant protection system in conjunction with "Front Assist" • Radio accessories: Digital radio reception DAB+ • Wheels: Light alloy (4) "Tulsa" 7 J x 17 • Wheels: Tire Mobility Set • Drawers under the front seats • Seat belts: Three-point automatic seat belts with belt tensioners for the outer rear seats • Seats: Lumbar supports in front • Seats: Front seats with height adjustment • Start-stop system with brake energy recovery • Power socket: 2 USB-C ports at the front • Textile floor mats front and rear • Electronic immobilizer • Central locking without safe security, with radio remote control, and 2 radio keys |
|--|---|

Extra equipment

- | | |
|---|---|
| <ul style="list-style-type: none"> • Folding trailer hitch (electric release) • Exterior mirrors electrically adjustable, folding, heated, ambient lighting, passenger mirror lowering • Steering wheel: Multifunction steering wheel in leather, heated, with shift paddles | <ul style="list-style-type: none"> • App-Connect Wireless for Apple CarPlay and Android Auto • Paint finish: Uni Pure White |
|---|---|



- "Discover Media" navigation system including "Streaming & Internet" (20.3 cm TFT touchscreen - FM radio reception - Dual tuner with phase diversity for optimal radio reception - Radio Data System (RDS) - Radio station logos - MP3 playback - USB-C interface with Apple compatibility - 4 x 20 watts output power - Map with 2D display - 3-way tone control - Telephone interface - Traffic sign recognition - Special destinations - DAB+ digital radio reception)
- Power socket: 2 USB-C ports in the front, (1 USB-C charging socket on the rear center console, charging power up to 45 W)
- LED matrix headlights - IQ.LIGHT (dynamic high beam control "Dynamic Light Assist" for LED matrix headlights - dynamic headlight range control, with dynamic cornering light - LED taillights, dark red - bad weather light and cornering light - IQ.LIGHT - LED matrix headlights with LED daytime running light, cornering light and dynamic indicator light)
- Package: Winter (automatically heated windscreen washer nozzles - heated front seats)
- Panoramic tilt/slide roof with rear panoramic roof
- Seats: ergoActive front seats (height-adjustable ergoActive front seats, adjustable seat and backrest angle, longitudinally adjustable thigh support - electrically adjustable front lumbar supports with massage function - seat center panels of the front seats and outer rear seats in microfleece "ArtVelours" - top comfort seats in the front)

Brief expert findings

Documents submitted	At the time of the inspection, the registration certificate Part 2 (letter) was available, but the registration certificate Part 1 (certificate) was not. (Copy)
VIN comparison	The vehicle identification number (VIN) was read from the vehicle and its conformity with the submitted documents was verified during the inspection by the undersigned.
Inspection	The inspection conditions were sufficient for the assessment of the vehicle. Lifting equipment and a pit were available for examining the vehicle.
Test drive	No test drive/maneuvering was carried out during the inspection of the vehicle.
Engine function test	An engine test run was performed.

Value reducing factors

No.	Component group	Description
1	Wing mirror - right side	Cap - Scratched - Paint
2	Rear bumper	Rear bumper - Scratch(es) - Paint
3	Front bumper	Front bumper - Scratched - Paint

Wear and tear

No.	Component group	Description
1	Boot lid / rear door	Boot lid - Scratch(es) - No deduction
2	Bonnet	Bonnet - Stone chips - No deduction
3	Vehicle glazing	Windscreen - Stone chips - No deduction
4	Side panel - rear left side	Side panel - Scratch(es) - No deduction
5	Rear bumper	Spoiler - Scratch(es) - No deduction

The vehicle shows signs of wear commensurate with its age and use.



Order/Scope of order

The order was placed to prepare a sales report for the vehicle described. This includes the following:

- Description of core relevant information about the vehicle
- Documentation of equipment features
(Delivery by third-party service providers)
- Documentation of damage, defects, missing parts
- Documentation of previous damage, unrepaired previous damage, repainting
- a brief visual or functional inspection of the equipment details if possible.
(Functional tests of driver assistance systems are not included in the scope of services!)
- a photo documentation of the vehicle

Basis for the order

This product is based on the Alphabet Fuhrpark GmbH guidelines for vehicle returns and valuations. The expert makes the explicit findings in each individual case objectively within the framework of the specified standards based on his or her own expertise.

The vehicle inspection takes place in a disassembled state.

Damage or defects that can only be detected during disassembly/diagnosis work or through advanced knowledge remain within the scope of the prognosis risk. An extended risk exists for concealed defects caused by fraudulent deception and not identifiable by the expert.

Damage or defects resulting from normal use or wear and tear of the vehicle will be accepted according to the applicable standard.

There was no explicit identification or monetary consideration of the expected features within the product.

Features which in their nature and severity slightly exceed normal use but do not constitute unacceptable damage will be documented and identified under signs of use if necessary.

Damage or defects which, according to the underlying standard, can no longer be attributed to normal use or wear and tear are listed in the product under "Depreciating Factors".

Depending on the product specification, a monetary ID can be provided. If this takes place, the costs can be 100% d or pro rata depending on the vehicle's age and mileage.

Previous damages

Apparently, no repaired previous damage could be found on the vehicle.

Comments

Das Fahrzeug befand sich zum Besichtigungszeitpunkt in beschädigten, nicht demontierten Zustand. Schadenausweitung möglich, Zusatzkosten können entstehen.

Der montierte Winterradsatz ist nicht Bestandteil der vorliegenden Fahrzeugausstattung.



Figure 1: Diagonal front (left)



Figure 2: Diagonal front (right)



Figure 3: Diagonal rear (left)



Figure 4: Diagonal rear (right)



Figure 5: Interior - front



Figure 6: Interior - rear



Figure 7: Instrument cluster



Figure 8: Instrument panel



Figure 9: interior 360° view ([Online link](#))



Figure 10: Cargo area

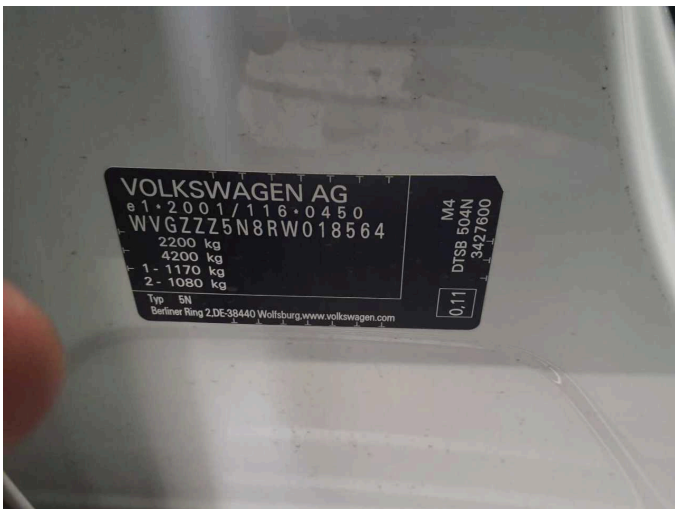


Figure 11: VIN



Figure 12: Mounted tyres



Figure 13: Documents



Figure 14: Documents



Figure 15: Additional tyres



Figure 16: Navigation



Figure 17: Misc.



Figure 18: Misc.



Figure 19: Misc.



Figure 20: Misc.



Figure 21: Misc.



Figure 22: Misc.



Figure 23: Misc.



Figure 24: Misc.



Figure 25: Misc.



Figure 26: Misc.



Figure 27: Misc.



Figure 28: Misc.



Figure 29: Misc.



Damage 1: Wing mirror - right side: Cap - Scratched - Paint



Damage 1: Wing mirror - right side: Cap - Scratched - Paint



Damage 2: Rear bumper: Rear bumper - Scratch(es) - Paint



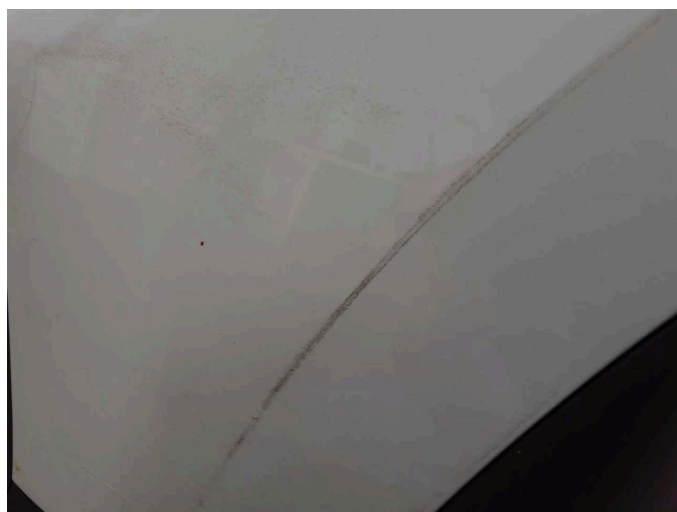
Damage 2: Rear bumper: Rear bumper - Scratch(es) - Paint



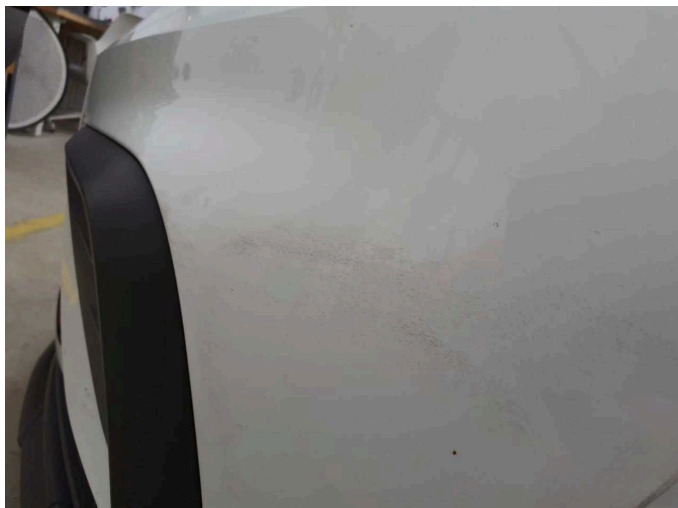
Damage 3: Front bumper: Front bumper - Scratched - Paint



Damage 3: Front bumper: Front bumper - Scratched - Paint



Damage 3: Front bumper: Front bumper - Scratched - Paint



Damage 3: Front bumper: Front bumper - Scratched - Paint



Wartungshistorie

(gemäß Auftraggeber Informationen)

Fahrgestellnummer: WVGZZZ5N8RW018564

Hersteller / Modell: VOLKSWAGEN VW Tiguan 2.0 TDI SCR DSG Life

Datum	KM-Stand	Beschreibung
27.02.2025	25.501	Motoröl b. Wartung; Ölfilter ern; Regelwartungsdienst; Wartung Sonstiges