



Expertise

Protocol number: 41172907  
Order No. / Reference: 25115646  
Inspection date: 21 Aug 2025

Manufacturer: Volkswagen	Model: Tiguan Allspace 2.0 TDI SCR DSG Life
VIN: WVGZZZ5N6PM048042	



Vehicle details	
Manufacturer / Type / Model / Equipment	
Volkswagen Tiguan Allspace 2.0 TDI SCR DSG Life	
Vehicle Identification number	WVGZZZ5N6PM048042
Mileage (Read)	177,731 km
First registration	20 Mar 2023
Number of holders	1
Power / Engine displacement	110 kw / 1,968 ccm
Fuel type / Cylinder	Diesel / 4
Gearbox / Number of gears	Automatic / 7
Type of drive	Front drive
Type of vehicle	SUV
Colour / colour code	Deep Black Perleffekt (C9X)
Doors / Seats	5 / 5
Upholstery type	Alcantara / cloth
Colour of upholstery	Black



## Vehicle details

<b>Maintenance booklet / proof</b>	digital proof / complete	<b>Next maintenance in</b>	10,400 km
<b>Last maintenance on / at</b>	05/2025 at 158,086 km		
<b>Key is / should be</b>	2 / 2	<b>FZG documents</b>	ZB#2 (B) was available (copy), ZB#1 (S) was not available
		<b>Letter No.</b>	GP917318
<b>Previous damage / Accident</b>	None detectable	<b>Repainting</b>	None detectable
<b>Inspection conditions</b>	sufficient	<b>Lifting equipment / pit</b>	yes
<b>Test drive</b>	Not performed	<b>Engine function test</b>	Performed
<b>Manufacturer key number/ type code number</b>	0603 / BZG 23496		
<b>Emission standard</b>	EURO6;WLTP;AP;PI/CI; M, N1 I	<b>Fine dust sticker</b>	
<b>Permitted total weight</b>	2,270 kg	<b>Empty weight</b>	

## Tyres

### Mounted tyres

#	Tyre size	Type of tyre	Manufacturer	Tread depth
1)	235/55 R18 100V	Summer tires (with run-flat tires) on Light alloy	Pirelli	3mm / 3mm
2)	235/55 R18 100V	Summer tires (with run-flat tires) on Light alloy	Continental	3mm / 3mm

### Additional tyres

#	Tyre size	Type of tyre	Manufacturer	Tread depth
1)	215/65 R17 103H	Winter tyres on Light alloy	Bridgestone	0mm / 0mm
2)	215/65 R17 103H	Winter tyres on Light alloy	Bridgestone	0mm / 0mm

**Legend:** Tread depth information for tires on the left is in the first place, for tires on the right is in the second place on the axle in the direction of travel



## Equipment

### Standard equipment

- Storage compartments in the roof console
- Airbag, head airbag system including front side airbags
- Automatic distance control ACC "stop & go" with speed limiter
- Chrome applications on mirror adjustment, window lifter switches, door handles
- Decorative inlays "Horizont Black"
- Display: Digital Cockpit Pro, multi-color, various info profiles selectable
- Electronic stabilization program with counter-steering support
- Light Assist high beam control
- Pedestrian detection
- Luggage compartment lighting
- Transmission: 7-speed DSG
- Rear window heated
- Rear window wiper with interval control
- ISOFIX anchorage points, also for i-Size child seats
- Air Care Climatronic air conditioning system
- Front headrests
- Reading lights 2 front and 2 rear
- Make-up mirror illuminated in the sun visors
- Fatigue detection
- Emergency braking assistant "Front Assist"
- Upholstery: Cloth
- Radio
- Radio accessories: 8 speakers
- Rain sensor
- Wheels: AirStop tires 235/55 R 18, rolling resistance optimized
- Leather gearshift knob
- Electromechanical power steering
- Seats: Passenger seat backrest completely foldable
- Seats: Lumbar supports in front
- Lane keeping assistant "Lane Assist"
- socket, 12-volt
- Bumpers in body color
- Textile floor mats front and rear
- Prepared for later activation: Navigation function "Discover Media" including "Streaming & Internet"
- Central locking without safe security, with radio remote control, and 2 radio keys
- Airbag for driver and front passenger including knee airbag on the driver's side
- Exterior mirror housing painted silver
- Brake light, third
- Chrome strips on the side windows
- Roof rails silver anodized
- diesel particulate filter
- Parking assistance
- Electronic parking brake including auto-hold function
- Automatic headlight switching, with daytime running lights
- Electric windows front and rear
- Front windscreen in laminated safety glass, heat and sound insulating
- Luggage compartment floor height adjustable in 2 steps
- Tailgate with electric opening and closing, adjustable opening angle
- Interior mirror automatically dimming
- License plate lighting in LED technology
- Headrests (3) rear
- LED headlights
- Light in the front footwell
- Front center armrest
- Non-smoking version
- Emergency call service
- Proactive occupant protection system in conjunction with "Front Assist"
- Radio accessories: Digital radio reception DAB+
- Tire pressure monitoring indicator
- Wheels: Tire Mobility Set no longer available
- Wheels: Light alloy (4) "Frankfurt" 7 J x 18
- Drawers under the front seats
- Seat belts: Three-point automatic seat belts in the front with height adjustment and belt tensioner
- Seats: Front seats with height adjustment
- Start-stop system with brake energy recovery
- Power socket: 2 USB-C ports at the front
- Telephone interface
- First aid kit, warning triangle and safety vest
- Electronic immobilizer
- Green thermal insulation glazing, side and rear

### Extra equipment

- Exterior mirrors electrically adjustable, folding and heated (with passenger mirror lowering)
- Display: Head-up display
- Finish: pearl effect
- Steering wheel: Multifunction steering wheel in leather, with shift paddles, heated
- Anti-theft alarm system with safe security (anti-theft alarm system with interior monitoring, backup horn and tow-away protection, central locking with safe security, radio remote control and 2 radio folding keys)



- Mesh partition
- Package: "Easy Open & Close" with Safe Security ("Easy Open & Close" - tailgate with sensor-controlled opening and closing, with remote unlocking - keyless locking and starting system "Keyless Access" with Safe Security)
- Windows: Rear side windows and rear window tinted
- Seats: ergoActive front seats (passenger seat backrest not foldable - ergoActive front seats height-adjustable, seat and backrest angle adjustable, thigh support longitudinally adjustable - lumbar supports electrically adjustable in the front with massage function - seat center panels of the front seats and outer rear seats in microfleece "ArtVelours" - top comfort seats in the front)
- Area View (including rear view camera)
- "Discover Pro" navigation system including "Streaming & Internet" (8 speakers - App-Connect including App-Connect Wireless for Apple CarPlay and Android Auto - DAB+ digital radio reception - "Discover Pro" navigation system including "Streaming & Internet" - Radio - Voice control - Traffic sign recognition)
- Parking steering assistant "Park Assist" including parking aid
- socket, 230 volts
- "Comfort" telephone interface with inductive charging function (operation and display via multifunction display and touchscreen of the radio or radio navigation system as well as via multifunction steering wheel; hands-free system; Bluetooth audio; external antenna connection with LTE support; 2 USB ports, also for iPod/ iPhone; 1 USB charging socket and AUX-IN multimedia socket)

### Brief expert findings

Documents submitted	At the time of the inspection, the registration certificate Part 2 (letter) was available, but the registration certificate Part 1 (certificate) was not. (Copy)
VIN comparison	The vehicle identification number (VIN) was read from the vehicle and its conformity with the submitted documents was verified during the inspection by the undersigned.
Inspection	The inspection conditions were sufficient for the assessment of the vehicle. Lifting equipment and a pit were available for examining the vehicle.
Test drive	No test drive/maneuvering was carried out during the inspection of the vehicle.
Engine function test	An engine test run was performed.

### Value reducing factors

No.	Component group	Description
1	Side panel - rear left side	Side panel - dent(s) - Smooth repair work
2	Boot lid / rear door	Trim - standard - lower - Scratched - Replace
3	Interior	Cargo area floor - Broken / torn - Replace
4	Rear bumper	Rear bumper - Scratched - Paint
5	Bonnet	Bonnet - Dent / paintcoat damage - Repair and paint

### Wear and tear

No.	Component group	Description
1	Trim / covers	D-pillar trim - interior, left side - Scratched - No deduction
2	Vehicle glazing	Windscreen - Stone chips - No deduction
3	Door - rear left side	Door edge - Scratch(es) - No deduction
4	Side panel - rear left side	Wheel well extension - Scratch(es) - No deduction
5	2nd wheel set	Tyres - complete set (Innen abgefahren) - Worn - No deduction

The vehicle shows signs of wear commensurate with its age and use.



## Order/Scope of order

The order was placed to prepare a sales report for the vehicle described. This includes the following:

- Description of core relevant information about the vehicle
- Documentation of equipment features  
(*Delivery by third-party service providers*)
- Documentation of damage, defects, missing parts
- Documentation of previous damage, unrepaired previous damage, repainting
- a brief visual or functional inspection of the equipment details if possible.  
(*Functional tests of driver assistance systems are not included in the scope of services!*)
- a photo documentation of the vehicle

## Basis for the order

This product is based on the Alphabet Fuhrpark GmbH guidelines for vehicle returns and valuations. The expert makes the explicit findings in each individual case objectively within the framework of the specified standards based on his or her own expertise.

The vehicle inspection takes place in a disassembled state.

Damage or defects that can only be detected during disassembly/diagnosis work or through advanced knowledge remain within the scope of the prognosis risk. An extended risk exists for concealed defects caused by fraudulent deception and not identifiable by the expert.

Damage or defects resulting from normal use or wear and tear of the vehicle will be accepted according to the applicable standard.

There was no explicit identification or monetary consideration of the expected features within the product.

Features which in their nature and severity slightly exceed normal use but do not constitute unacceptable damage will be documented and identified under signs of use if necessary.

Damage or defects which, according to the underlying standard, can no longer be attributed to normal use or wear and tear are listed in the product under "Depreciating Factors".

Depending on the product specification, a monetary ID can be provided. If this takes place, the costs can be 100% d or pro rata depending on the vehicle's age and mileage.

## Previous damages

Apparently, no repaired previous damage could be found on the vehicle.

## Comments

- Winterradsatz ist kein Bestandteil des Auslieferungsumfangs





**Figure 1:** Diagonal front (left)



**Figure 2:** Diagonal front (right)



**Figure 3:** Diagonal rear (left)



**Figure 4:** Diagonal rear (right)



**Figure 5:** Interior - front



**Figure 6:** Interior - rear





Figure 7: Instrument cluster



Figure 8: Instrument panel



Figure 9: interior 360° view



Figure 10: Cargo area



Figure 11: VIN



Figure 12: Mounted tyres



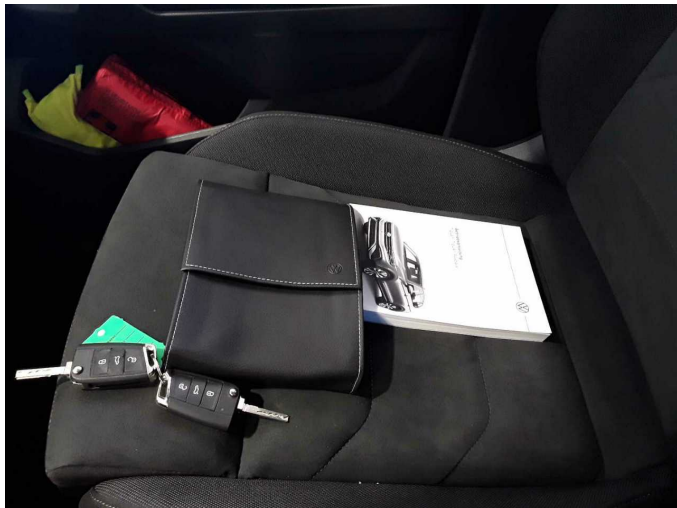


Figure 13: Documents



Figure 14: Documents

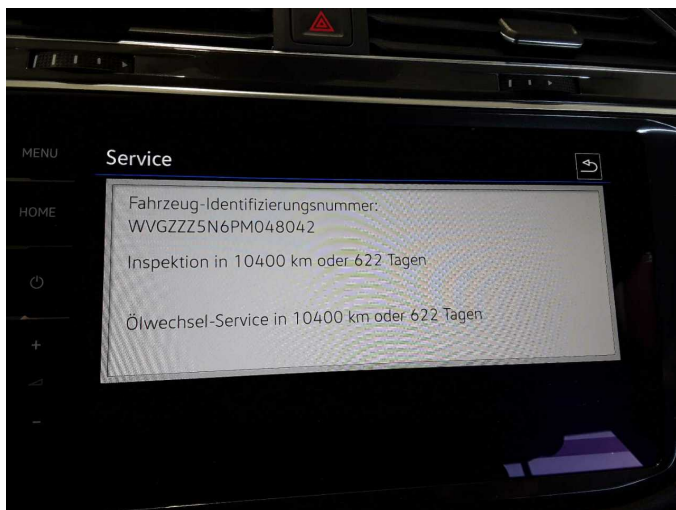


Figure 15: Documents



Figure 16: Additional tyres



Figure 17: Navigation



Figure 18: Misc.





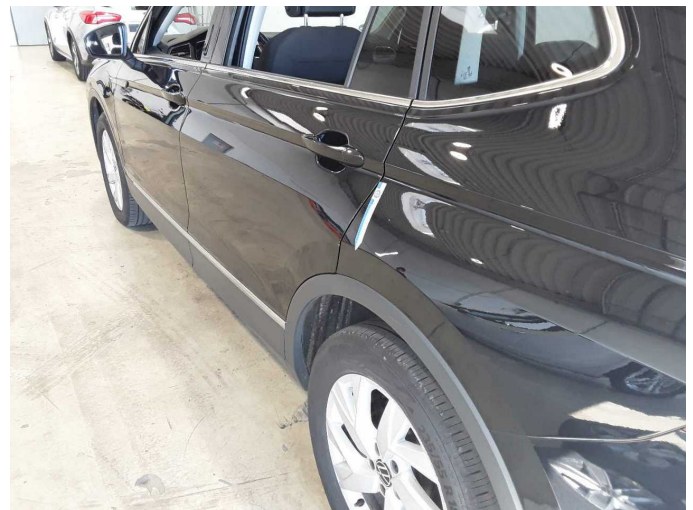
Figure 19: Misc.



Figure 20: Misc.



Figure 21: Misc.



Damage 1: Side panel - rear left side: Side panel - dent(s) - Smooth repair work



Damage 1: Side panel - rear left side: Side panel - dent(s) - Smooth repair work



Damage 2: Boot lid / rear door: Trim - standard - lower - Scratched - Replace





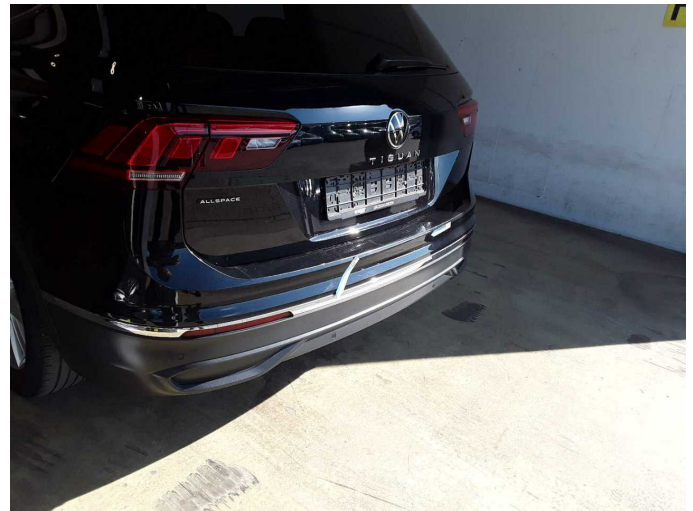
**Damage 2:** Boot lid / rear door: Trim - standard - lower - Scratched - Replace



**Damage 3:** Interior: Cargo area floor - Broken / torn - Replace



**Damage 3:** Interior: Cargo area floor - Broken / torn - Replace



**Damage 4:** Rear bumper: Rear bumper - Scratched - Paint



**Damage 4:** Rear bumper: Rear bumper - Scratched - Paint



**Damage 4:** Rear bumper: Rear bumper - Scratched - Paint





**Damage 5:** Bonnet: Bonnet - Dent / paintcoat damage - Repair and paint



**Damage 5:** Bonnet: Bonnet - Dent / paintcoat damage - Repair and paint



**Damage 5:** Bonnet: Bonnet - Dent / paintcoat damage - Repair and paint





# Wartungshistorie

(gemäß Auftraggeber Informationen)

Fahrgestellnummer: WVGZZZ5N6PM048042

Hersteller / Modell: VOLKSWAGEN VW Tiguan Allspace 2.0 TDI SCR DSG Life

Datum	KM-Stand	Beschreibung
08.05.2025	158.086	Bremse Sonstiges; Bremsflüssigkeit; Bremsflüssigkeit ern; Bremsklötze hinten; Motoröl b. Wartung; Ölfilter ern; Regelwartungsdienst; Wartung Sonstiges
16.12.2024	124.372	Getriebeöl ern/prüfen; Motoröl b. Wartung; Ölfilter ern; Regelwartungsdienst; Wartung Sonstiges
30.05.2024	90.306	Bremse Sonstiges; Bremsklötze hinten; Bremsklötze vorne; Bremsscheiben hinten; Bremsscheiben vorne; Kraftstofffilter ern; Luftfiltereinsatz ern; Motoröl b. Wartung; Ölfilter ern; Regelwartungsdienst; Systemtest/ Eigendiagnose; Wartung Sonstiges
19.12.2023	49.252	Motoröl b. Wartung; Ölfilter ern; Regelwartungsdienst; Wartung Sonstiges