



Expertise

Protocol number: 41406829
Order No. / Reference: 25069062
Inspection date: 5 Sept 2025

Manufacturer: Volkswagen	Model: Tiguan Allspace 2.0 TDI SCR DSG Life
VIN: WVGZZZ5N6PM007622	



Vehicle details	
Manufacturer / Type / Model / Equipment	
Volkswagen Tiguan Allspace 2.0 TDI SCR DSG Life	
Vehicle Identification number	WVGZZZ5N6PM007622
Mileage (Read)	177,875 km
First registration	12 Jan 2023
Number of holders	1
Power / Engine displacement	110 kw / 1,968 ccm
Fuel type / Cylinder	Diesel / 4
Gearbox / Number of gears	Automatic / 7
Type of drive	Front drive
Type of vehicle	SUV
Colour / colour code	Deep Black Perleffekt (C9X)
Doors / Seats	5 / 5
Upholstery type	Cloth
Colour of upholstery	Black-Anthracite
Vehicle with smoke odor	no



Vehicle details			
Maintenance booklet / proof	digital proof / complete	Next maintenance in	3,800 km
Last maintenance on / at	04/2025 at 151,601 km		
Key is / should be	2 / 2	FZG documents	ZB#2 (B) was available (copy), ZB#1 (S) was not available
		Letter No.	GM783059
Previous damage / Accident	Detectable	Repainting	Detectable
Inspection conditions	sufficient	Lifting equipment / pit	yes
Test drive	short drive on the company premises	Engine function test	Performed
Manufacturer key number/ type code number	0603 / BZG 23496		
Emission standard	EURO6;WLTP;AP;PI/CI; M, N1 I	Fine dust sticker	
Permitted total weight	2,270 kg	Empty weight	

Tyres				
Mounted tyres				
#	Tyre size	Type of tyre	Manufacturer	Tread depth
1)	235/55 R18 100V	Summer tires (with run-flat tires) on Light alloy	Pirelli	3mm / 3mm
2)	235/55 R18 100V	Summer tires (with run-flat tires) on Light alloy	Pirelli	3mm / 3mm
Additional tyres				
#	Tyre size	Type of tyre	Manufacturer	Tread depth
1)	215/65 R17 103V	Winter tyres on Light alloy	Bridgestone	4mm / 4mm
2)	215/65 R17 103V	Winter tyres on Light alloy	Bridgestone	5mm / 5mm
Legend: Tread depth information for tires on the left is in the first place, for tires on the right is in the second place on the axle in the direction of travel				

Equipment

Standard equipment

- Storage compartments in the roof console
- Airbag, head airbag system including front side airbags (for front and rear passengers)
- Automatic distance control ACC "stop & go" with speed limiter
- Brake light, third
- Chrome strips on the side windows
- Roof rails silver anodized
- "Horizont Black" decorative inlays (for instrument panel and front door panels)
- Parking aid (acoustic warning signals for obstacles in the front and rear areas)
- Electronic stabilization program with counter-steering support (including ABS, ASR, EDS, MSR and trailer stabilization)
- Automatic headlight switching, with daytime running lights ("leaving home" function and manual "coming home" function)
- Electric windows front and rear
- Light Assist high beam control
- Front windscreen in laminated safety glass, heat and sound insulating
- Luggage compartment floor height adjustable in 2 steps
- Transmission: 7-speed DSG
- Rear window heated
- Rear window wiper with interval control
- ISOFIX anchor points, also for i-Size child seats (device for attaching two child seats to the rear seats)
- Headrests (3) rear
- Front headrests (safety-optimized - length and height adjustable)
- Reading lights 2 front and 2 rear
- Light in the front footwell
- Front center armrest
- Non-smoking version (storage compartment and 12 V socket at the front)
- Emergency call service (no registration required, service is activated upon delivery)
- Upholstery: Cloth
- Proactive occupant protection system in conjunction with "Front Assist"
- Radio accessories: Digital radio reception DAB+
- Tire pressure monitoring indicator
- Wheels: Tire Mobility Set no longer available
- Wheels: Light alloy (4) "Frankfurt" 7 J x 18 (tires 235/55 R 18)
- Electromechanical power steering (speed-dependent control)
- Seats: Passenger seat backrest completely foldable
- Seats: Comfort seats in the front (passenger seat backrest can be folded down completely - drawers under the front seats)
- Seats: Front seats with height adjustment
- Airbag for driver and front passenger including knee airbag on the driver's side (passenger airbag deactivation - knee airbag on the driver's side)
- Exterior mirrors electrically adjustable and heated
- Exterior mirror housing painted silver
- Chrome applications on mirror adjustment and window lifter switches, door handles (interior door handles in matt chrome)
- diesel particulate filter
- Display: Digital Cockpit Pro, multi-color, various info profiles selectable
- Electronic parking brake including Auto Hold function (Volkswagen's Auto Hold function is an extension of the electronic parking brake. The Auto Hold function prevents the vehicle from rolling away unintentionally when stationary or starting off, without the driver having to constantly apply the brakes. Auto Hold thus offers maximum driving comfort. If the ABS wheel speed sensors detect rolling, the braking torque is automatically increased until the vehicle comes to a stop again.)
- Pedestrian detection
- Luggage compartment lighting (additional, removable and usable as a flashlight)
- Tailgate with electric opening and closing, adjustable opening angle
- Interior mirror automatically dimming
- License plate lighting in LED technology
- Air Care Climatronic air conditioning system (3-zone temperature control - allergen filter - rear controls)
- LED headlights
- Steering wheel: Multifunction steering wheel in leather, with shift paddles
- Make-up mirror illuminated in the sun visors
- Fatigue detection
- Emergency braking assistant "Front Assist" (detects critical distance situations and helps to shorten the stopping distance - warns the driver visually and acoustically in dangerous situations and with a preventive braking jolt)
- Radio
- Radio accessories: 8 speakers
- Rain sensor
- Wheels: AirStop tires 235/55 R 18, rolling resistance optimized
- Leather gearshift knob
- Drawers under the front seats
- Seat belts: Three-point automatic seat belts in the front with height adjustment and belt tensioner (3 three-point automatic seat belts in the rear including belt tensioner for the outer rear seats - warning tone and light for unfastened seat belts in the front and rear)
- Seats: Lumbar supports in front



- Start-stop system with brake energy recovery
- Power socket: 2 USB-C ports at the front (charging power up to 45 W)
- Telephone interface
- First aid kit, warning triangle and safety vest
- Electronic immobilizer
- Green thermal insulation glazing, side and rear

- Lane keeping assistant "Lane Assist"
- 12-volt socket (on the rear center console and in the luggage compartment)
- Bumpers in body color (bumper lower parts black)
- Textile floor mats front and rear
- Prepared for later activation: Navigation function "Discover Media" including "Streaming & Internet"
- Central locking without safe security, with radio remote control, and 2 radio keys

Extra equipment

- Exterior mirrors electrically adjustable, folding and heated (with passenger mirror lowering)
- Finish: pearl effect
- Steering wheel: Multifunction steering wheel in leather, with shift paddles, heated
- Mesh partition
- Package: "Easy Open & Close" with Safe Security ("Easy Open & Close" - tailgate with sensor-controlled opening and closing, with remote unlocking - keyless locking and starting system "Keyless Access" with Safe Security)
- Package: Business Premium incl. Navigation (DSG) (2 USB-C ports in the front, 1 USB-C charging port on the rear center console - Head-up display - Heated leather multifunction steering wheel with shift paddles - Automatically heated front windshield washer jets - Voice control - "Comfort" telephone interface with inductive charging function - Heated front seats)
- socket, 230 volts
- "Comfort" telephone interface with inductive charging function (operation and display via multifunction display and touchscreen of the radio or radio navigation system as well as via multifunction steering wheel; hands-free system; Bluetooth audio; external antenna connection with LTE support; 2 USB ports, also for iPod/iPhone; 1 USB charging socket and AUX-IN multimedia socket)

- Anti-theft alarm system with safe security (anti-theft alarm system with interior monitoring, backup horn and tow-away protection, central locking with safe security, radio remote control and 2 radio folding keys)
- "Discover Pro" navigation system including "Streaming & Internet" (8 speakers - App-Connect including App-Connect Wireless for Apple CarPlay and Android Auto - DAB+ digital radio reception - "Discover Pro" navigation system including "Streaming & Internet" - Radio - Voice control - Traffic sign recognition)
- Package: Driver Assistance Package "Plus" without "Side Assist" and Proactive Occupant Protection System (Travel Assist, Lane Assist and Emergency Assist - Park Assist including Parking Assist - Traffic Sign Recognition)
- Windows: Rear side windows and rear window tinted
- Seats: ergoActive front seats (passenger seat backrest not foldable - ergoActive front seats height-adjustable, seat and backrest angle adjustable, thigh support longitudinally adjustable - lumbar supports electrically adjustable in the front with massage function - seat center panels of the front seats and outer rear seats in microfleece "ArtVelours" - top comfort seats in the front)
- Area View (including rear view camera)

Brief expert findings

Documents submitted	At the time of the inspection, the registration certificate Part 2 (letter) was available, but the registration certificate Part 1 (certificate) was not. (Copy)
VIN comparison	The vehicle identification number (VIN) was read from the vehicle and its conformity with the submitted documents was verified during the inspection by the undersigned.
Inspection	The inspection conditions were sufficient for the assessment of the vehicle. Lifting equipment and a pit were available for examining the vehicle.
Test drive	A short maneuvering and shunting trip was carried out on the company premises.
Engine function test	An engine test run was performed.

Value reducing factors

No.	Component group	Description
1	Sill - right side	Sill - Scratch(es) - Smart repair
2	Side panel - rear right side	Sill - Scratch(es) - Smart repair



No.	Component group	Description
3	Sill - left side	Sill - Scratch(es) - Smart repair
4	Roof	Roof rail - right side - Scratch(es) - Smart repair
5	Side panel - rear left side	Sill - Scratch(es) - Smart repair
6	Trim / covers	Boot lid - interior trim - Scratch(es) - Replace
7	Rear bumper	Rear bumper - Scratched - Paint
8	Front bumper	Front bumper - Scratched - Paint
9	Bonnet	Bonnet - Stone chips - Repair and paint

Wear and tear

No.	Component group	Description
1	Interior	Boot cover / roller cover - Soiled - No deduction
2	Door - front right side	Door - Scratch(es) - Cover / polish
3	Vehicle glazing	Windscreen - Stone chips - No deduction
4	Body	Body - Scratch(es)
5	Interior	Interior - Scratch(es)
6	Trim / covers	Floor mats - Broken / torn - No deduction

The vehicle shows signs of wear commensurate with its age and use.

Previous damages

No.	Previous damage	Extent of damage (Net)
1	Side - left, Provided by user / customer, from 7 Feb 2025	1.188,12 €

Accident damages

No. Accident

1 Rear

Repainting

No. Repainting

1 Door - front left side, Professionally carried out, Invoice of repair done Non-existent

Paint coat thickness measurement

Door - front left side 206 µm |

Order/Scope of order

The order was placed to prepare a sales report for the vehicle described. This includes the following:

- Description of core relevant information about the vehicle
- Documentation of equipment features
(Delivery by third-party service providers)
- Documentation of damage, defects, missing parts
- Documentation of previous damage, unrepaired previous damage, repainting
- a brief visual or functional inspection of the equipment details if possible.
(Functional tests of driver assistance systems are not included in the scope of services!)
- a photo documentation of the vehicle



Basis for the order

This product is based on the Alphabet Fuhrpark GmbH guidelines for vehicle returns and valuations. The expert makes the explicit findings in each individual case objectively within the framework of the specified standards based on his or her own expertise.

The vehicle inspection takes place in a disassembled state.

Damage or defects that can only be detected during disassembly/diagnosis work or through advanced knowledge remain within the scope of the prognosis risk. An extended risk exists for concealed defects caused by fraudulent deception and not identifiable by the expert.

Damage or defects resulting from normal use or wear and tear of the vehicle will be accepted according to the applicable standard.

There was no explicit identification or monetary consideration of the expected features within the product.

Features which in their nature and severity slightly exceed normal use but do not constitute unacceptable damage will be documented and identified under signs of use if necessary.

Damage or defects which, according to the underlying standard, can no longer be attributed to normal use or wear and tear are listed in the product under "Depreciating Factors".

Depending on the product specification, a monetary ID can be provided. If this takes place, the costs can be 100% d or pro rata depending on the vehicle's age and mileage.

Previous damages

Non-repaired previous damages were found at the vehicle. The necessary repair costs are listed in the expert report or if necessary, are listed in detail in a separately enclosed repair cost calculation.

Comments

Das Fahrzeug befand sich zum Besichtigungszeitpunkt in beschädigtem, nicht demontiertem Zustand. Schadenausweitung möglich, Zusatzkosten können entstehen

- Winterradsatz ist kein Bestandteil des Auslieferungsumfangs.



Figure 1: Diagonal front (left)



Figure 2: Diagonal front (right)



Figure 3: Diagonal rear (left)



Figure 4: Diagonal rear (right)



Figure 5: Interior - front



Figure 6: Interior - rear



Figure 7: Instrument cluster



Figure 8: Instrument panel



Figure 9: Interior 360° view



Figure 10: Cargo area

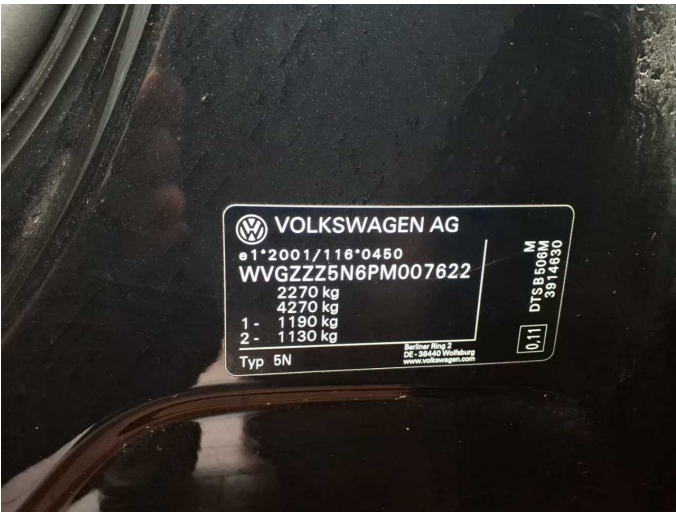


Figure 11: VIN



Figure 12: Mounted tyres



Figure 13: Documents



Figure 14: Documents



Figure 15: Documents



Figure 16: Additional tyres



Figure 17: Navigation



Figure 18: Misc.



Figure 19: Misc.



Figure 20: Misc.



Figure 21: Misc.



Figure 22: Misc.

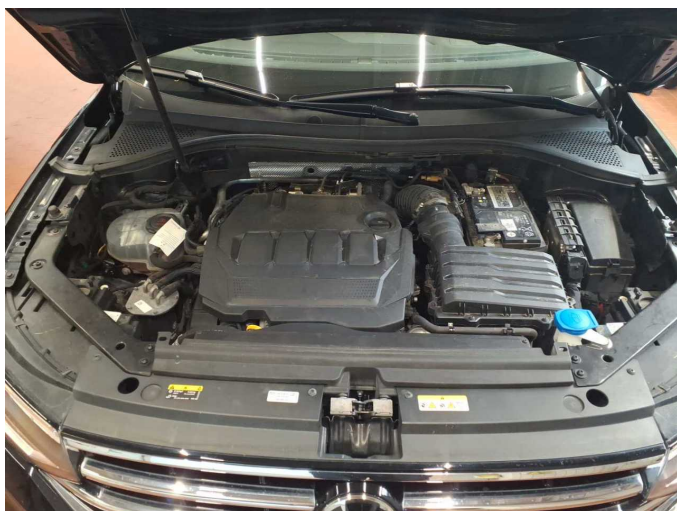


Figure 23: Misc.



Figure 24: Misc.



Figure 25: Misc.



Figure 26: Misc.



Figure 27: Misc.



Figure 28: Misc.



Figure 29: Misc.



Figure 30: Misc.



Damage 1: Sill - right side: Sill - Scratch(es) - Smart repair



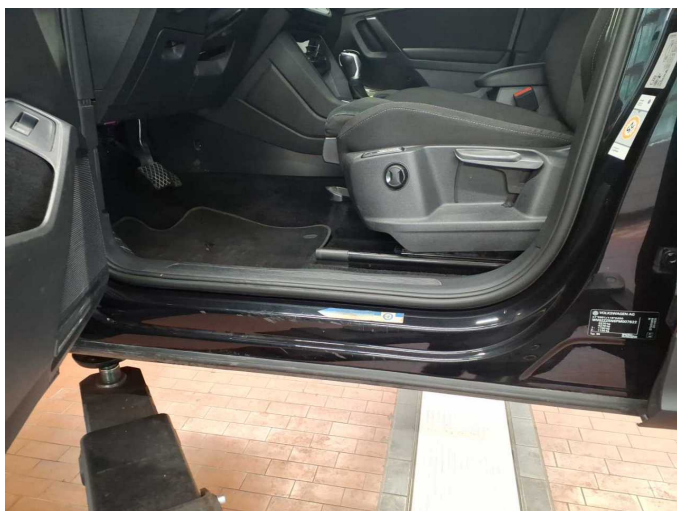
Damage 1: Sill - right side: Sill - Scratch(es) - Smart repair



Damage 2: Side panel - rear right side: Sill - Scratch(es) - Smart repair



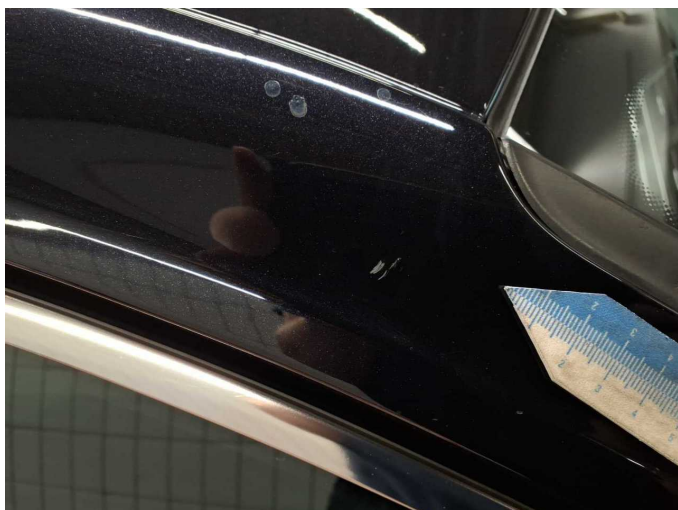
Damage 2: Side panel - rear right side: Sill - Scratch(es) - Smart repair



Damage 3: Sill - left side: Sill - Scratch(es) - Smart repair



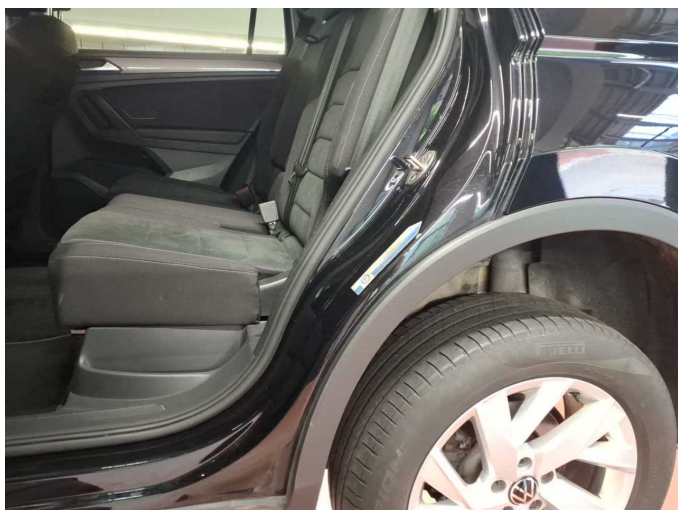
Damage 3: Sill - left side: Sill - Scratch(es) - Smart repair



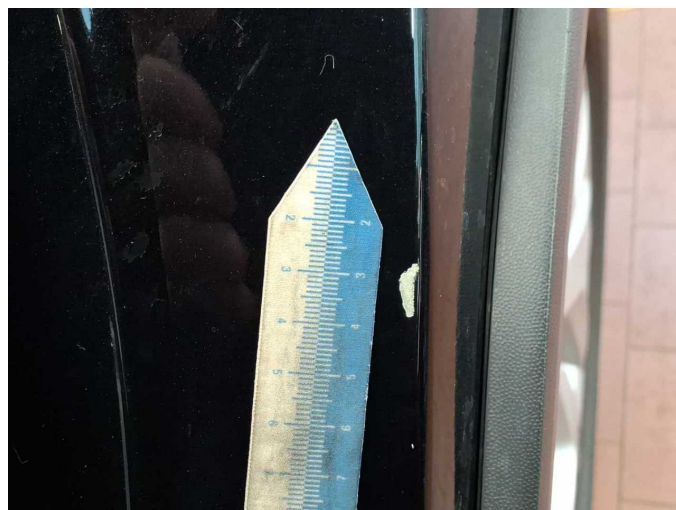
Damage 4: Roof: Roof rail - right side - Scratch(es) - Smart repair



Damage 4: Roof: Roof rail - right side - Scratch(es) - Smart repair



Damage 5: Side panel - rear left side: Sill - Scratch(es) - Smart repair



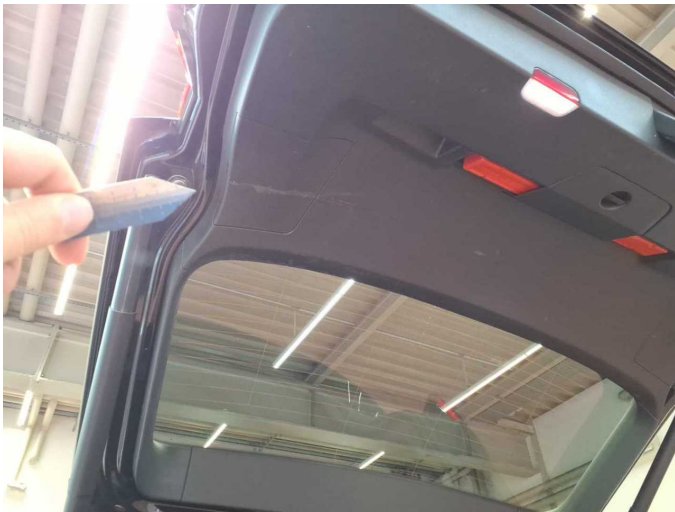
Damage 5: Side panel - rear left side: Sill - Scratch(es) - Smart repair



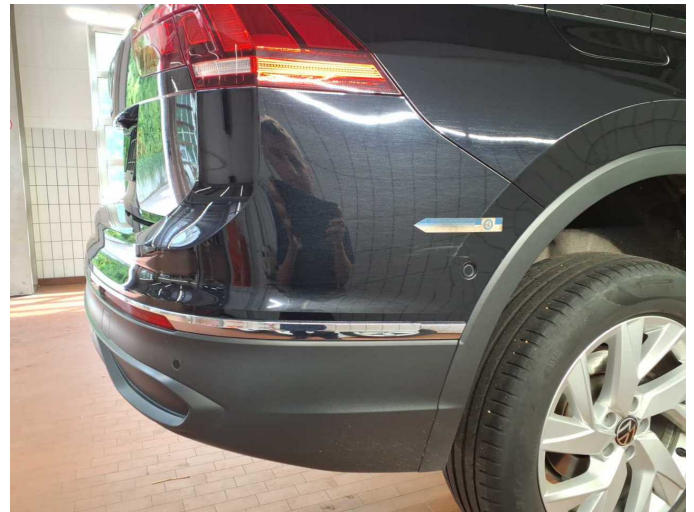
Damage 6: Trim / covers: Boot lid - interior trim - Scratch(es) - Replace



Damage 6: Trim / covers: Boot lid - interior trim - Scratch(es) - Replace



Damage 6: Trim / covers: Boot lid - interior trim - Scratch(es) - Replace



Damage 7: Rear bumper: Rear bumper - Scratched - Paint



Damage 7: Rear bumper: Rear bumper - Scratched - Paint



Damage 7: Rear bumper: Rear bumper - Scratched - Paint



Damage 7: Rear bumper: Rear bumper - Scratched - Paint



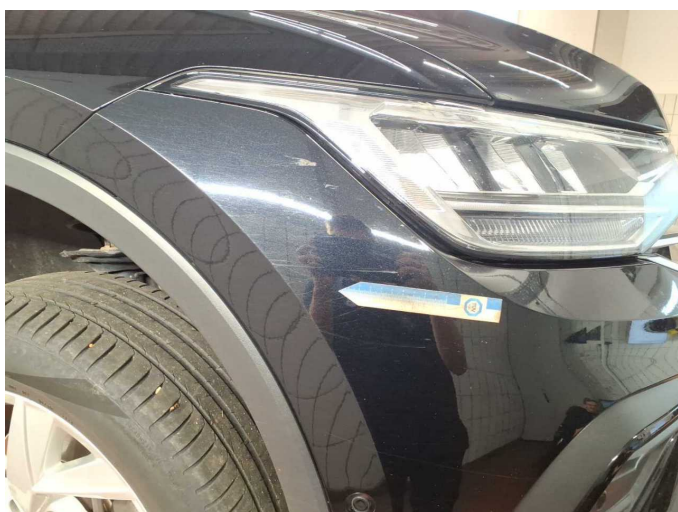
Damage 7: Rear bumper: Rear bumper - Scratched - Paint



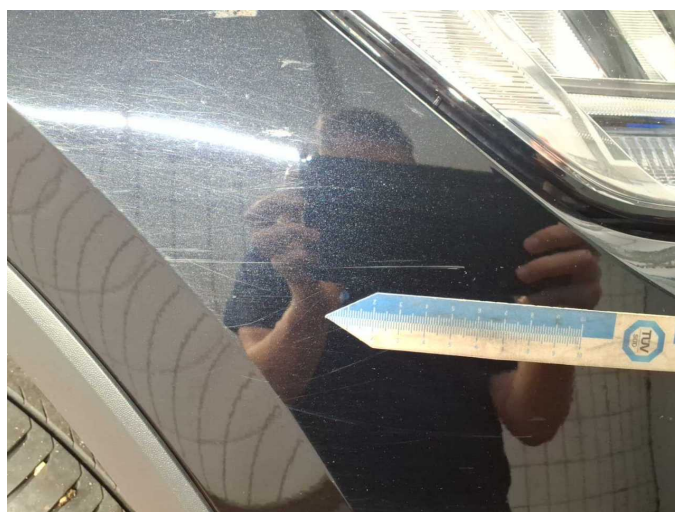
Damage 8: Front bumper: Front bumper - Scratched - Paint



Damage 8: Front bumper: Front bumper - Scratched - Paint



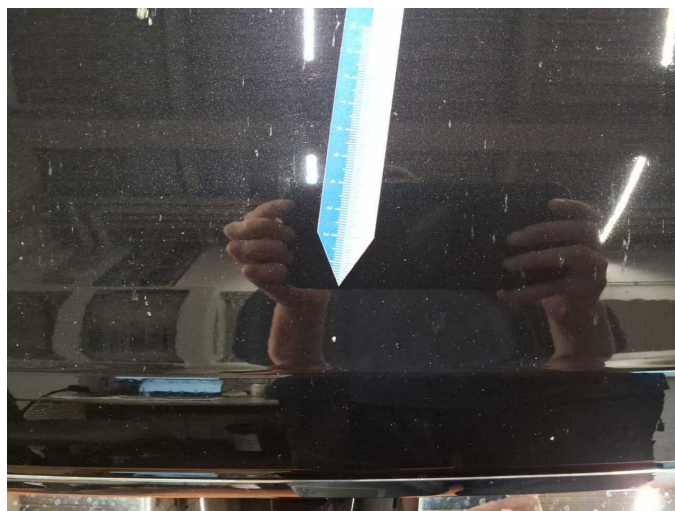
Damage 8: Front bumper: Front bumper - Scratched - Paint



Damage 8: Front bumper: Front bumper - Scratched - Paint



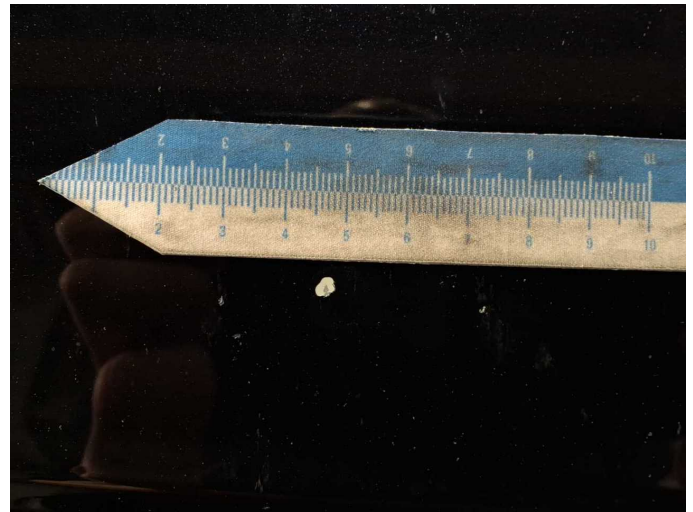
Damage 9: Bonnet: Bonnet - Stone chips - Repair and paint



Damage 9: Bonnet: Bonnet - Stone chips - Repair and paint



Damage 9: Bonnet: Bonnet - Stone chips - Repair and paint



Damage 9: Bonnet: Bonnet - Stone chips - Repair and paint



Damage 9: Bonnet: Bonnet - Stone chips - Repair and paint



Damage 9: Bonnet: Bonnet - Stone chips - Repair and paint



Accident 1: Rear



Accident 1: Rear



Accident 1: Rear



Accident 1: Rear



Repainting 1: Door - front left side



Wartungshistorie

(gemäß Auftraggeber Informationen)

Fahrgestellnummer: WVGZZZ5N6PM007622

Hersteller / Modell: VOLKSWAGEN VW Tiguan Allspace 2.0 TDI SCR DSG Life

Datum	KM-Stand	Beschreibung
03.09.2025	177.048	Reparatur Sonstiges; Systemtest/Eigendiagnose
09.04.2025	151.601	Motoröl b. Wartung; Ölfilter ern; Regelwartungsdienst; Wartung Sonstiges
28.10.2024	122.101	Bremsflüssigkeit; Bremsflüssigkeit ern; Getriebeöl ern/prüfen; Motoröl b. Wartung; Ölfilter ern; Regelwartungsdienst; Wartung Sonstiges
06.06.2024	93.366	Bremse Sonstiges; Bremsklötze hinten; Bremsklötze vorne; Bremsscheiben + Klötze h; Bremsscheiben + Klötze v; Bremsscheiben hinten; Bremsscheiben vorne; Kraftstofffilter ern; Luftfiltereinsatz ern; Motoröl b. Wartung; Ölfilter ern; Regelwartungsdienst; Systemtest/Eigendiagnose; Wartung Sonstiges
27.12.2023	61.410	Motoröl b. Wartung; Ölfilter ern; Regelwartungsdienst; Wartung Sonstiges
13.07.2023	29.302	Motoröl b. Wartung; Ölfilter ern; Regelwartungsdienst; Wartung Sonstiges