



Expertise

Protocol number: 41752073
Order number / reference: 25244794
Inspection date: 30 Sept 2025

Manufacturer: Volkswagen

Model: Tiguan 2.0 TDI SCR DSG URBAN SPORT

VIN: WVGZZZ5N4PW514605



Vehicle details

Manufacturer / Type / Model / Equipment

Volkswagen Tiguan 2.0 TDI SCR DSG URBAN SPORT

Vehicle Identification number WVGZZZ5N4PW514605

Mileage (Read) 99,402 km

First registration 6 Feb 2023

Number of holders 1

Power / Engine displacement 110 kw / 1,968 ccm

Fuel type / Cylinder Diesel / 4

Gearbox / Number of gears Automatic / 7

Type of drive Front drive

Type of vehicle SUV

Colour / colour code Deep Black Perleffekt

Doors / Seats 5 / 5

Upholstery type Cloth / leather combination

Colour of upholstery Anthracite-Light grey



Vehicle details

Maintenance booklet / proof	digital proof / complete	Next maintenance in	16,600 km
Last maintenance on / at	08/2025 at 98,357 km		
Key is / should be	2 / 2	FZG documents	ZB#2 (B) was available (copy), ZB#1 (S) was not available
		Letter No.	GP913580
Previous damage / Accident	None detectable	Repainting	None detectable
Inspection conditions	sufficient	Lifting equipment / pit	yes
Test drive	Not performed	Engine function test	Performed
Manufacturer key number/ type code number	0603 / BZG 23984		
Emission standard	EURO6;WLTP;AP;PI/CI; M, N1 I	Fine dust sticker	
Permitted total weight	2,170 kg	Empty weight	

Tyres

Mounted tyres

#	Tyre size	Type of tyre	Manufacturer	Tread depth
1)	235/55 R18 100V	Summer tires (with run-flat tires) on Light alloy	Continental	5mm / 5mm
2)	235/55 R18 100V	Summer tires (with run-flat tires) on Light alloy	Continental	6mm / 6mm

Additional tyres

#	Tyre size	Type of tyre	Manufacturer	Tread depth
1)	215/65 R17 99H	Winter tires (with run-flat tires) on Light alloy	Pirelli	5mm / 5mm
2)	215/65 R17 99H	Winter tires (with run-flat tires) on Light alloy	Pirelli	5mm / 5mm

Legend: Tread depth information for tires on the left is in the first place, for tires on the right is in the second place on the axle in the direction of travel

Equipment

Standard equipment

- Storage compartments in the roof console
- Airbag: Head airbag system for front and rear passengers including front side airbags
- Automatic distance control ACC (DSG)
- Exterior mirror housing black
- Brake light, third
- Roof rails black
- Decorative inlays for special model
- tachometer
- Door sills for special model
- Electronic stabilization program with counter-steering support
- Electric windows front and rear
- Front windscreen in laminated safety glass, heat and sound insulating
- Transmission: 7-speed DSG
- Rear window wiper
- Interior mirror automatically dimming
- Air Care Climatronic air conditioning system
- Front headrests
- LED headlights
- Light in the front footwell
- Make-up mirrors in the sun visors
- Multifunction display "Premium"
- Non-smoking version
- Emergency call service
- Pedals and footrest in brushed stainless steel
- Proactive occupant protection system in conjunction with "Front Assist"
- Radio accessories: 8 speakers
- Tire pressure monitoring indicator
- Wheels: Tire Mobility Set no longer available
- Wheels: Light alloy (4) "Sebring" 7 J x 18 in black
- Windows: Rear side windows and rear window tinted
- Seat belts: Three-point automatic seat belts in the front with height adjustment and belt tensioner
- Seats: Lumbar supports in front
- Seats: Front seats with height adjustment
- Start-stop system with brake energy recovery
- Bumpers in body color
- First aid kit, warning triangle and safety vest
- Electronic immobilizer
- Airbag for driver and front passenger including knee airbag on the driver's side
- 30-color ambient lighting
- Exterior mirrors electrically adjustable and heated
- Vehicle tool kit
- Chrome applications on mirror adjustment, window lifter switches, door handles
- diesel particulate filter
- Parking assistance
- Electronic parking brake including auto-hold function
- Automatic headlight switching with LED daytime running lights
- Light Assist high beam control
- Pedestrian detection
- Luggage compartment lighting
- Rear window heated
- Rear spoiler in R-styling
- ISOFIX anchorage points, also for i-Size child seats
- Headrests (3) rear
- LED reading lights 2 front and 2 rear
- Steering wheel: Multifunction steering wheel in leather, with shift paddles
- Front center armrest
- Fatigue detection
- Emergency braking assistant "Front Assist"
- Package: Sports Package
- Upholstery: Cloth
- Radio "Composition"
- Radio accessories: 2 USB-C front
- Rain sensor
- Wheels: AirStop tires 235/55 R 18, rolling resistance class A
- Leather gearshift knob
- Drawers under the front seats
- Seats: Passenger seat backrest completely foldable
- Seats: Comfort seats in the front
- Seats: Rear seat bench asymmetrically split
- Lane keeping assistant "Lane Assist"
- socket, 12-volt
- Textile floor mats front and rear with decorative stitching in grey
- Central locking without safe security, with radio remote control, and 2 radio keys

Extra equipment



- Finish: pearl effect
- Mesh partition
- Package: Business Premium (DSG) (App-Connect incl. App-Connect Wireless for Apple CarPlay and Android Auto - Heated leather multifunction steering wheel with shift paddles - Automatically heated front windshield washer nozzles - Voice control - "Comfort" telephone interface with inductive charging function - Heated front seats)
- Rear view camera
- "Discover Media" navigation system including "Streaming & Internet" (20.3 cm TFT touchscreen - FM radio reception - Dual tuner with phase diversity for optimal radio reception - Radio Data System (RDS) - Radio station logos - MP3 playback - USB-C interface with Apple compatibility - 4 x 20 watts output power - Map with 2D display - 3-way tone control - Telephone interface - Traffic sign recognition - Special destinations - DAB+ digital radio reception)
- Power socket: 2 USB-C ports at the front

Brief expert findings

Documents submitted	At the time of the inspection, the registration certificate Part 2 (letter) was available, but the registration certificate Part 1 (certificate) was not. (Copy)
VIN comparison	The vehicle identification number (VIN) was read from the vehicle and its conformity with the submitted documents was verified during the inspection by the undersigned.
Inspection	The inspection conditions were sufficient for the assessment of the vehicle. Lifting equipment and a pit were available for examining the vehicle.
Test drive	No test drive/maneuvering was carried out during the inspection of the vehicle.
Engine function test	An engine test run was performed.

Value reducing factors

No.	Component group	Description
1	Body	Body - Glued / labelled - De-glue / neutralise
2	Door - front right side	Door - Scratch(es) - Paint

Wear and tear

No.	Component group	Description
1	Door - rear left side	Door - Scratch(es) - No deduction
2	Front bumper	Front bumper - Stone chips - No deduction
3	Bonnet	Bonnet - Stone chips - No deduction
4	Vehicle glazing	Windscreen - Stone chips - No deduction
5	Rear bumper	Rear bumper - Scratch(es) - No deduction

The vehicle shows signs of wear commensurate with its age and use.

Order/Scope of order

The order was placed to prepare a sales report for the vehicle described. This includes the following:

- Description of core relevant information about the vehicle
- Documentation of equipment features
(*Delivery by third-party service providers*)
- Documentation of damage, defects, missing parts
- Documentation of previous damage, unrepaired previous damage, repainting
- a brief visual or functional inspection of the equipment details if possible.
(*Functional tests of driver assistance systems are not included in the scope of services!*)
- a photo documentation of the vehicle



Basis for the order

This product is based on the Alphabet Fuhrpark GmbH guidelines for vehicle returns and valuations. The expert makes the explicit findings in each individual case objectively within the framework of the specified standards based on his or her own expertise.

The vehicle inspection takes place in a disassembled state.

Damage or defects that can only be detected during disassembly/diagnosis work or through advanced knowledge remain within the scope of the prognosis risk. An extended risk exists for concealed defects caused by fraudulent deception and not identifiable by the expert.

Damage or defects resulting from normal use or wear and tear of the vehicle will be accepted according to the applicable standard.

There was no explicit identification or monetary consideration of the expected features within the product.

Features which in their nature and severity slightly exceed normal use but do not constitute unacceptable damage will be documented and identified under signs of use if necessary.

Damage or defects which, according to the underlying standard, can no longer be attributed to normal use or wear and tear are listed in the product under "Depreciating Factors".

Depending on the product specification, a monetary ID can be provided. If this takes place, the costs can be 100% d or pro rata depending on the vehicle's age and mileage.

Previous damages

Apparently, no repaired previous damage could be found on the vehicle.

Comments

- Winterradsatz ist kein Bestandteil des Auslieferumfangs.



Figure 1: Diagonal front (left)



Figure 2: Diagonal front (right)



Figure 3: Diagonal rear (left)



Figure 4: Diagonal rear (right)



Figure 5: Interior - front

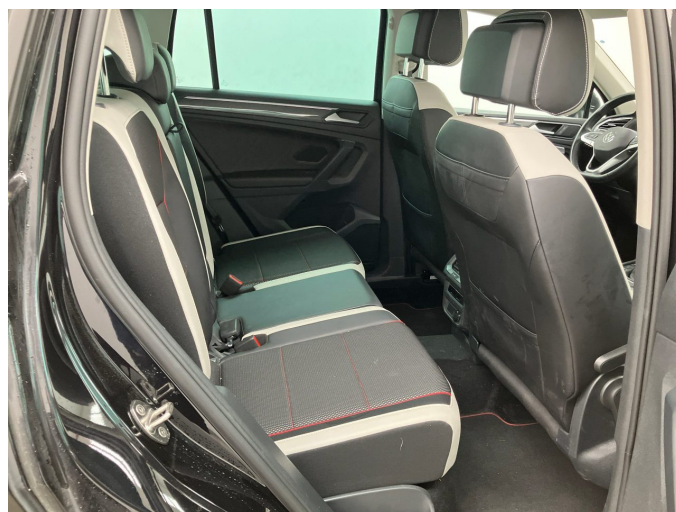


Figure 6: Interior - rear



Figure 7: Instrument cluster



Figure 8: Instrument panel



Figure 9: Interior 360° view



Figure 10: Cargo area

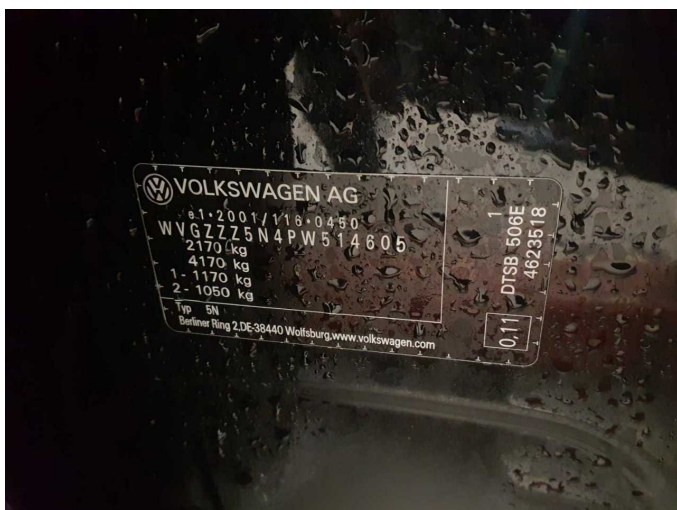


Figure 11: VIN



Figure 12: Mounted tyres

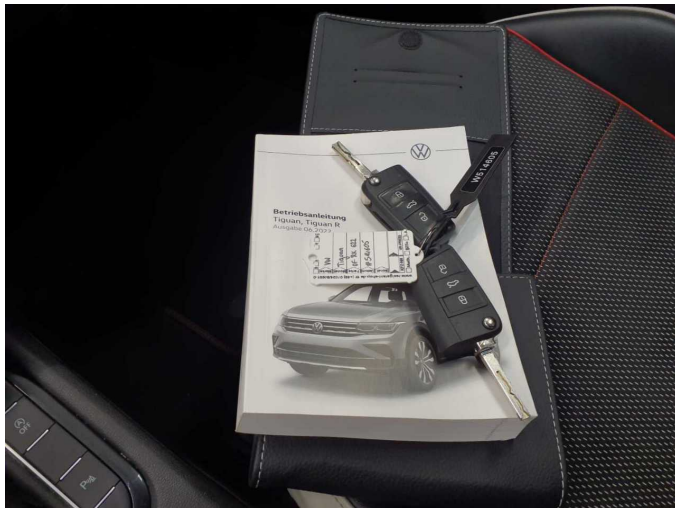


Figure 13: Documents



Figure 14: Documents



Figure 15: Additional tyres



Figure 16: Navigation



Figure 17: Misc.



Figure 18: Misc.



Figure 19: Misc.



Figure 20: Misc.

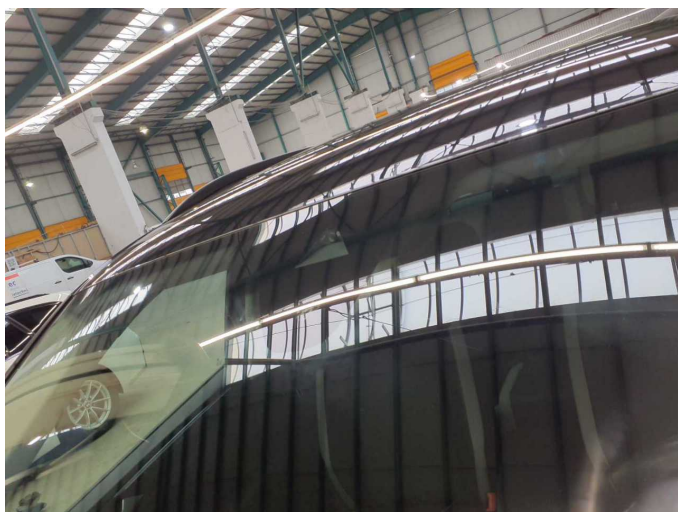


Figure 21: Misc.



Figure 22: Misc.



Figure 23: Misc.



Figure 24: Misc.



Figure 25: Misc.



Figure 26: Misc.



Damage 1: Body: Body - Glued / labelled - De-glue / neutralise



Damage 1: Body: Body - Glued / labelled - De-glue / neutralise



Damage 1: Body: Body - Glued / labelled - De-glue / neutralise



Damage 2: Door - front right side: Door - Scratch(es) - Paint



Damage 2: Door - front right side: Door - Scratch(es) - Paint



Damage 2: Door - front right side: Door - Scratch(es) - Paint



Wartungshistorie

(gemäß Auftraggeber Informationen)

Fahrgestellnummer: WVGZZZ5N4PW514605

Hersteller / Modell: VOLKSWAGEN VW Tiguan 2.0 TDI SCR DSG URBAN SPORT

Datum	KM-Stand	Beschreibung
08.08.2025	98.357	Kraftstofffilter ern; Luftfiltereinsatz ern; Motoröl b. Wartung; Ölfilter ern; Ölwechsel; Systemtest/Eigendiagnose; Wartung Sonstiges
07.04.2025	85.918	Bremsscheiben + Klötze h; Bremsscheiben + Klötze v; Regelwartungsdienst
19.11.2024	71.595	Motoröl b. Wartung; Ölwechsel
05.07.2024	58.022	Motoröl b. Wartung; Ölfilter ern; Ölwechsel; Regelwartungsdienst; Wartung Sonstiges
25.10.2023	29.123	Motoröl b. Wartung; Ölfilter ern; Regelwartungsdienst; Wartung Sonstiges