



Expertise

Protocol number: 41043043
Order No. / Reference: 25084579
Inspection date: 12 Aug 2025

Manufacturer: Volkswagen

Model: Tiguan 2.0 TDI SCR DSG Elegance

VIN: WVGZZZ5N0PW091134



Vehicle details	
Manufacturer / Type / Model / Equipment	
Volkswagen Tiguan 2.0 TDI SCR DSG Elegance	
Vehicle Identification number	WVGZZZ5N0PW091134
Mileage (Read)	49,390 km
First registration	2 Jun 2023
Number of holders	1
Power / Engine displacement	110 kw / 1,968 ccm
Fuel type / Cylinder	Diesel / 4
Gearbox / Number of gears	Automatic transmission / 7
Type of drive	Front drive
Type of vehicle	SUV
Colour / colour code	nightshade blue-metallic (P5J)
Doors / Seats	5 / 5
Upholstery type	Leather
Colour of upholstery	Black



Vehicle details

Maintenance booklet / proof	digital proof / complete	Next maintenance in	5,400 km
Last maintenance on / at	07/2025 at 48,457 km		
Key is / should be	2 / 2	FZG documents	ZB#2 (B) was available (copy), ZB#1 (S) was not available
		Letter No.	GV179638
Previous damage / Accident	None detectable	Repainting	None detectable
Inspection conditions	sufficient	Lifting equipment / pit	yes
Test drive	Not performed	Engine function test	Performed
Manufacturer key number/ type code number	0603 / BZG 31038		
Emission standard	EURO6;WLTP;AP;PI/CI; M, N1 I	Fine dust sticker	
Permitted total weight	2,170 kg	Empty weight	

Tyres

Mounted tyres

#	Tyre size	Type of tyre	Manufacturer	Tread depth
1)	235/55 R18 100V	Summer tires (with run-flat tires) on Light alloy	Continental	3mm / 3mm
2)	235/55 R18 100V	Summer tires (with run-flat tires) on Light alloy	Continental	4mm / 4mm

Additional tyres

#	Tyre size	Type of tyre	Manufacturer	Tread depth
1)	215/65 R17 99H	Winter tires (with run-flat tires) on Light alloy	Pirelli	5mm / 5mm
2)	215/65 R17 99H	Winter tires (with run-flat tires) on Light alloy	Pirelli	6mm / 6mm

Replacement

Typ	Tyre size	Type of tyre	Manufacturer	Tread depth
E	145/85 R18 103M	Summer tyres on Steel	Sonstige	3 mm

Legend: Tread depth information for tires on the left is in the first place, for tires on the right is in the second place on the axle in the direction of travel



Equipment

Standard equipment

- Cornering and bad weather lights
- Airbag: Head airbag system for front and rear passengers including front side airbags
- Automatic distance control ACC (DSG)
- Exterior mirrors electrically adjustable and heated
- Chrome applications on mirror adjustment, window lifter switches, door handles
- Display: Digital Cockpit Pro, multi-color, various info profiles selectable
- Electronic parking brake including auto-hold function
- Automatic headlight switching with LED daytime running lights
- Light Assist high beam control
- Pedestrian detection
- Transmission: 7-speed DSG
- Rear window heated
- Rear window wiper
- ISOFIX anchorage points, also for i-Size child seats
- Air Care Climatronic air conditioning system
- Headrests (3) rear
- LED reading lights 2 front and 2 rear
- light in the front footwell
- Dynamic headlight range adjustment
- Fatigue detection
- Non-smoking version
- Package: Ambience package
- Package: Winter
- Rain sensor
- Wheels: AirStop tires 235/55 R 18, rolling resistance class A
- Drawers under the front seats
- Seat belts: Three-point automatic seat belts in the front with height adjustment and belt tensioner
- Seats: Rear seat bench asymmetrically split
- Seats: Front seats with height adjustment
- Start-stop system with brake energy recovery
- Power socket: 2 USB-C ports at the front
- Textile floor mats front and rear
- Electronic immobilizer
- Central locking without safe security, with radio remote control, and 2 radio keys
- Airbag for driver and front passenger including knee airbag on the driver's side
- App-Connect including App-Connect Wireless for Apple CarPlay and Android Auto
- Brake light, third
- Roof rails silver anodized
- diesel particulate filter
- tachometer
- Parking assistance
- Electronic stabilization program with counter-steering support
- Electric windows front and rear
- Front windscreen in laminated safety glass, heat and sound insulating
- Tailgate with electric opening and closing, adjustable opening angle
- Interior mirror automatically dimming
- License plate lighting in LED technology
- Instrument cluster with electronic speedometer
- Front headrests
- Steering wheel: Multifunction steering wheel in leather, heated, with shift paddles
- Front center armrest height and length adjustable, with storage box and rear air vents
- Emergency call service
- Package: Chrome package
- Radio
- Tire pressure monitoring indicator
- Wheels: Tire Mobility Set no longer available
- Leather gearshift knob
- Electromechanical power steering
- Seats: Passenger seat backrest completely foldable
- Seats: Lumbar supports in front
- Seats: Top comfort seats in the front
- Lane keeping assistant "Lane Assist"
- socket, 12-volt
- Bumpers in body color
- First aid kit, warning triangle and safety vest
- Green thermal insulation glazing, side and rear

Extra equipment

- Anti-theft alarm system with safe security (anti-theft alarm system with interior monitoring, backup horn and tow-away protection, central locking with safe security, radio remote control and 2 radio folding keys)
- Paint finish: metallic
- LED matrix headlights - IQ.LIGHT (Dynamic Light Assist for LED matrix headlights - LED headlights with LED daytime running lights and cornering lights - LED taillights, dark red)
- Mesh partition



- "Discover Pro" navigation system including "Streaming & Internet" (App-Connect including App-Connect Wireless for Apple CarPlay and Android Auto, DAB+ digital radio reception, 23.4 cm TFT touchscreen with gesture control, FM radio and diversity antenna, RDS, MP3 playback, 2 USB-C ports, 4 x 20 watts of power, map with 2D display, "Comfort" telephone interface connectable via Bluetooth, wireless charging, traffic sign recognition, voice control, points of interest, We Connect Plus including We Connect free for 3 years)
- Package: Driver Assistance Package "Plus"
- Panoramic tilt/slide roof with rear panoramic roof
- Parking steering assistant "Park Assist" including parking aid
- Radio accessories: Harman Kardon sound system (8+1 speakers - 480 watts total power - 16-channel digital amplifier - subwoofer)
- Wheels: Light alloy (4) "Nizza" 7 J x 18 (in black, high-sheen finish - Airstop tires 235/55 R 18, rolling resistance class A - wheel locks with extended theft protection)
- Wheels: Winter wheels (4) (additional), light alloy "Montana" 7 J x 17 (Airstop winter tires 215/65 R 17 H - tool kit and jack)
- Package: Assistance package "IQ.DRIVE" including "Emergency Assist" ("Travel Assist" driving assistant, "Lane Assist" lane keeping assistant and "Emergency Assist" lane keeping assistant - "Park Assist" parking steering assistant including parking aid - Proactive occupant protection system in conjunction with "Front Assist" - "Side Assist" lane change assistant and rear parking assistant - Traffic sign recognition)
- Package: "Vienna" leather package including front seats with memory function (electrically adjustable, folding, heated exterior mirrors, ambient lighting, passenger mirror lowering, memory - electrically adjustable front lumbar supports - seat center panels and inner bolsters in "Vienna" leather - top-of-the-line comfort seats in the front - electrically adjustable front seats with memory function; with convenient entry on the driver's side)
- Wheels: Spare wheel saves weight and space (on-board tools and jack - luggage compartment floor height adjustable in 2 levels - spare wheel saves weight and space)
- Keyless locking and starting system "Keyless Access" with safe security

Brief expert findings

Documents submitted	At the time of the inspection, the registration certificate Part 2 (letter) was available, but the registration certificate Part 1 (certificate) was not. (Copy)
VIN comparison	The vehicle identification number (VIN) was read and the undersigned verified that it matched the documents submitted during the inspection.
Inspection	The inspection conditions were sufficient for the assessment of the vehicle. Lifting equipment and a pit were available for examining the vehicle.
Test drive	No test drive/maneuvering was carried out during the inspection of the vehicle.
Engine function test	An engine test run was performed.

Value reducing factors

No.	Component group	Description
1	Bonnet	Bonnet - dent(s) - Smooth repair work
2	Side panel - rear right side	Side panel - dent(s) - Smooth repair work
3	Boot lid / rear door	Boot lid - dent(s) - Smooth repair work
4	Mudguard - left side	Mudguard - left side (Anätzung) - Paint defect - Repair and paint
5	Door - rear right side	Door - Scratch(es) - Paint

Wear and tear

No.	Component group	Description
1	2nd wheel set	2nd wheel set - Soiled - No deduction
2	Vehicle glazing	Windscreen - Stone chips - No deduction
3	Front bumper	Front bumper - Stone chips - No deduction
4	Side panel - rear right side	Wheel well extension - Scratch(es) - No deduction
5	Trim / covers	Boot lid - interior trim - Scratch(es) - No deduction

The vehicle shows signs of wear commensurate with its age and use.



Order/Scope of order

The order was placed to prepare a sales report for the vehicle described. This includes the following:

- Description of core relevant information about the vehicle
- Documentation of equipment features
(*Delivery by third-party service providers*)
- Documentation of damage, defects, missing parts
- Documentation of previous damage, unrepaired previous damage, repainting
- a brief visual or functional inspection of the equipment details if possible.
(*Functional tests of driver assistance systems are not included in the scope of services!*)
- a photo documentation of the vehicle

Basis for the order

This product is based on the Alphabet Fuhrpark GmbH guidelines for vehicle returns and valuations. The expert makes the explicit findings in each individual case objectively within the framework of the specified standards based on his or her own expertise.

The vehicle inspection takes place in a disassembled state.

Damage or defects that can only be detected during disassembly/diagnosis work or through advanced knowledge remain within the scope of the prognosis risk. An extended risk exists for concealed defects caused by fraudulent deception and not identifiable by the expert.

Damage or defects resulting from normal use or wear and tear of the vehicle will be accepted according to the applicable standard.

There was no explicit identification or monetary consideration of the expected features within the product.

Features which in their nature and severity slightly exceed normal use but do not constitute unacceptable damage will be documented and identified under signs of use if necessary.

Damage or defects which, according to the underlying standard, can no longer be attributed to normal use or wear and tear are listed in the product under "Depreciating Factors".

Depending on the product specification, a monetary ID can be provided. If this takes place, the costs can be 100% d or pro rata depending on the vehicle's age and mileage.

Previous damages

Apparently, no repaired previous damage could be found on the vehicle.

Comments

Das Fahrzeug befand sich zum Besichtigungszeitpunkt in beschädigten, nicht demontierten Zustand. Schadenausweitung möglich, Zusatzkosten können entstehen.



Figure 1: Diagonal front (left)



Figure 2: Diagonal front (right)



Figure 3: Diagonal rear (left)



Figure 4: Diagonal rear (right)



Figure 5: Interior - front



Figure 6: Interior - rear



Figure 7: Instrument cluster



Figure 8: Instrument panel



Figure 9: interior 360° view



Figure 10: Cargo area

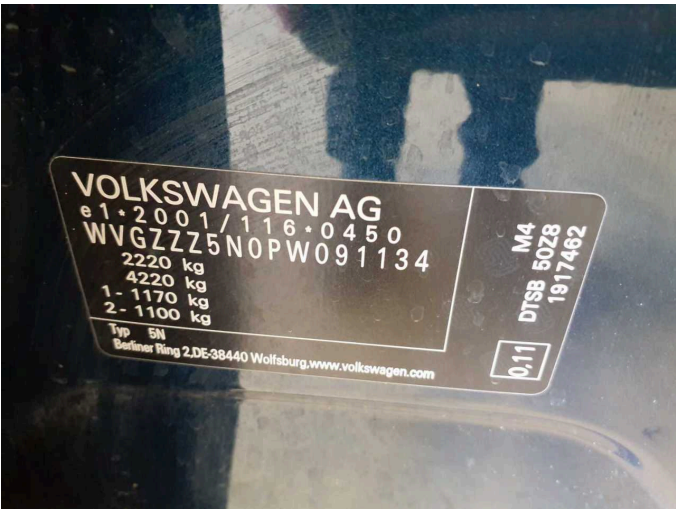


Figure 11: VIN



Figure 12: Mounted tyres

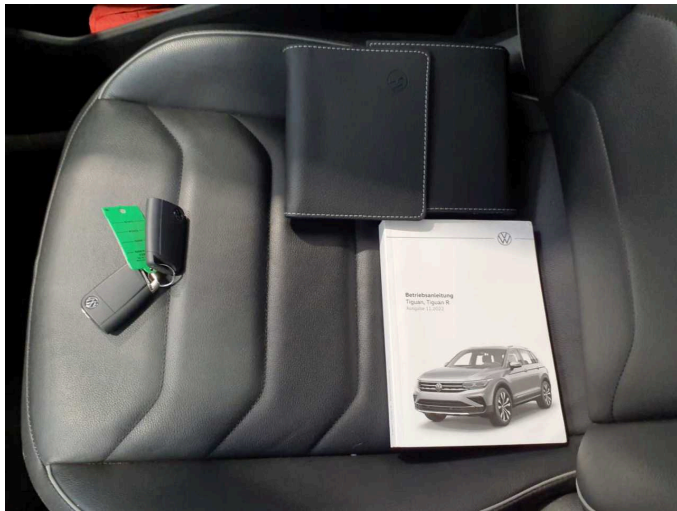


Figure 13: Documents



Figure 14: Additional tyres



Figure 15: Navigation



Figure 16: Misc.



Figure 17: Misc.



Figure 18: Misc.



Figure 19: Misc.



Figure 20: Misc.



Figure 21: Misc.



Figure 22: Misc.

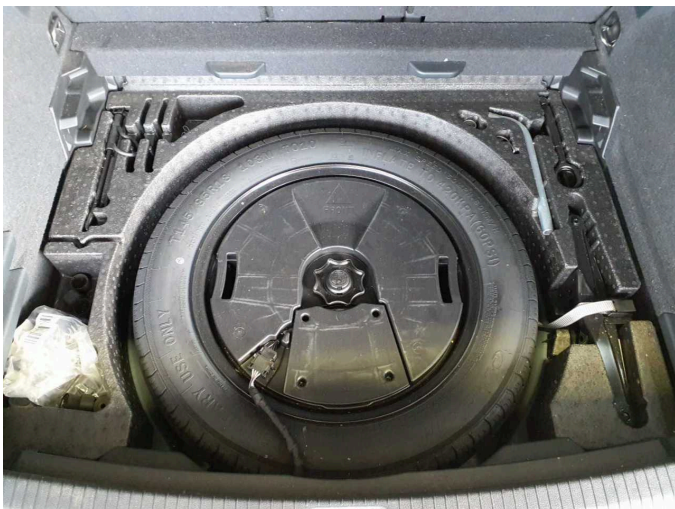


Figure 23: Misc.



Damage 1: Bonnet: Bonnet - dent(s) - Smooth repair work



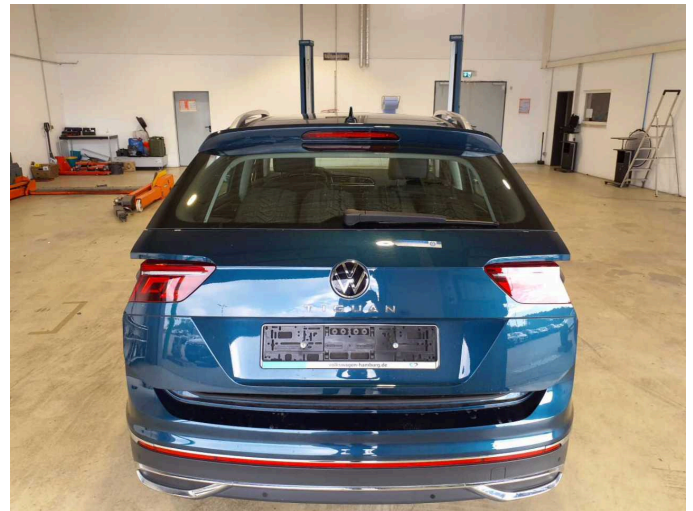
Damage 1: Bonnet: Bonnet - dent(s) - Smooth repair work



Damage 2: Side panel - rear right side: Side panel - dent(s) - Smooth repair work



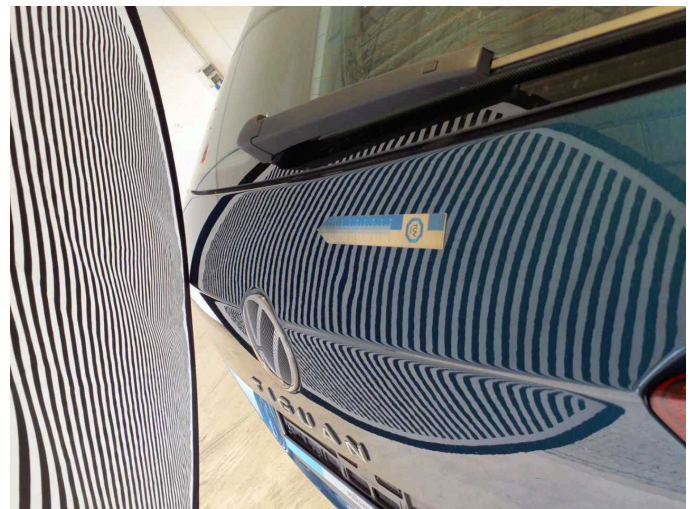
Damage 2: Side panel - rear right side: Side panel - dent(s) - Smooth repair work



Damage 3: Boot lid / rear door: Boot lid - dent(s) - Smooth repair work



Damage 3: Boot lid / rear door: Boot lid - dent(s) - Smooth repair work



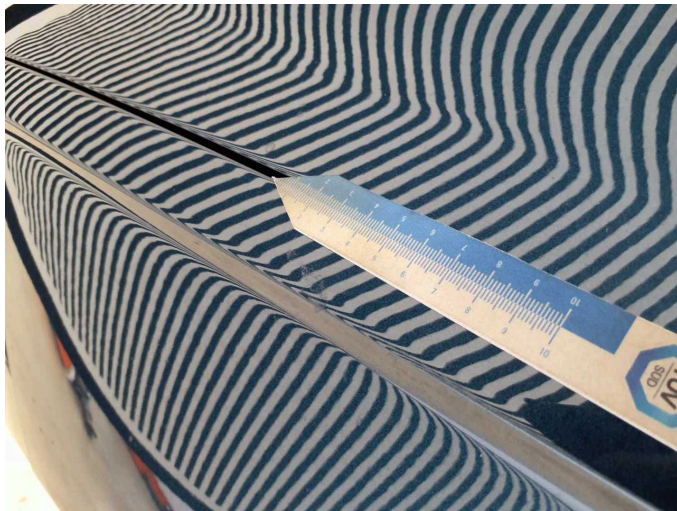
Damage 3: Boot lid / rear door: Boot lid - dent(s) - Smooth repair work



Damage 3: Boot lid / rear door: Boot lid - dent(s) - Smooth repair work



Damage 4: Mudguard - left side: Mudguard - left side (Anätzung) - Paint defect - Repair and paint



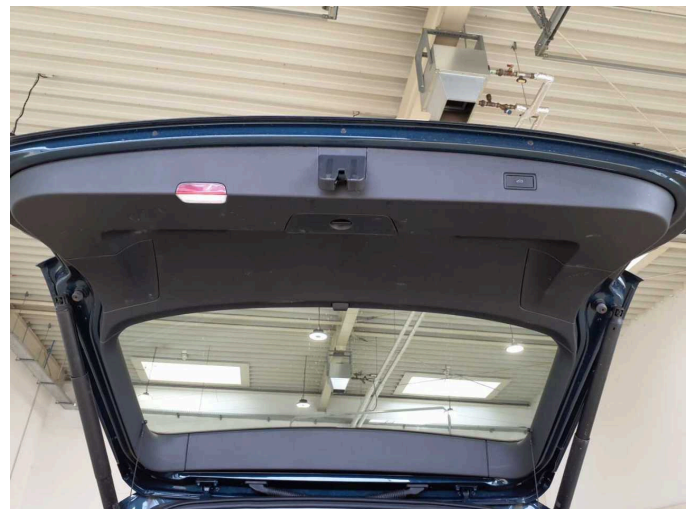
Damage 4: Mudguard - left side: Mudguard - left side (Anätzung) - Paint defect - Repair and paint



Damage 5: Door - rear right side: Door - Scratch(es) - Paint



Damage 5: Door - rear right side: Door - Scratch(es) - Paint



Wear and tear 5: Trim / covers: Boot lid - interior trim - Scratch(es) - No deduction



Wear and tear 5: Trim / covers: Boot lid - interior trim - Scratch(es) - No deduction



Wear and tear 5: Trim / covers: Boot lid - interior trim - Scratch(es) - No deduction



Wartungshistorie

(gemäß Auftraggeber Informationen)

Fahrgestellnummer: WVGZZZ5N0PW091134

Hersteller / Modell: VOLKSWAGEN VW Tiguan 2.0 TDI SCR DSG Elegance

Datum	KM-Stand	Beschreibung
17.07.2025	48.457	Bremsflüssigkeit; Bremsflüssigkeit ern; Motoröl b. Wartung; Ölfilter ern; Ölwechsel; Systemtest/Eigendiagnose; Wartung Sonstiges
13.05.2024	24.716	Motoröl b. Wartung; Ölfilter ern; Regelwartungsdienst; Wartung Sonstiges