



Expertise

Protocol number: 41242140
Order No. / Reference: 25018824
Inspection date: 8 Aug 2025

Manufacturer: Volkswagen

Model: Touran 2.0 TDI SCR DSG ACTIVE

VIN: WVGZZZ1TZNW013105



Vehicle details

Manufacturer / Type / Model / Equipment	
Volkswagen Touran 2.0 TDI SCR DSG ACTIVE	
Vehicle Identification number	WVGZZZ1TZNW013105
Mileage (Read)	73,077 km
First registration	6 Jul 2022
Number of holders	1
Power / Engine displacement	110 kw / 1,968 ccm
Fuel type / Cylinder	Diesel / 4
Gearbox / Number of gears	Automatic / 7
Type of drive	Front drive
Type of vehicle	Van
Colour / colour code	Delphingrau Metallic
Doors / Seats	5 / 5
Upholstery type	Cloth
Colour of upholstery	Black



Vehicle details

Maintenance booklet / proof	digital proof / complete	Next maintenance in	568 Tag(e)
Last maintenance on / at	02/2025 at 64,620 km		
Key is / should be	2 / 2	FZG documents	ZB#2 (B) was available (copy), ZB#1 (S) was not available
		Letter No.	GJ202479
Previous damage / Accident	Detectable	Repainting	Detectable
Inspection conditions	sufficient	Lifting equipment / pit	yes
Test drive	Not performed	Engine function test	Performed
Manufacturer key number/ type code number	0603 / BWR 00369		
Emission standard	EURO6;WLTP;AP;PI/CI; M, N1 I	Fine dust sticker	
Permitted total weight	2,230 kg	Empty weight	

Tyres

Mounted tyres

#	Tyre size	Type of tyre	Manufacturer	Tread depth
1)	205/60 R16 96V	Summer tyres on Light alloy	Pirelli	7mm / 7mm
2)	205/60 R16 96V	Summer tyres on Light alloy	Pirelli	7mm / 7mm

Replacement

Typ	Tyre size	Type of tyre	Manufacturer	Tread depth
E	205/60 R16 96V	Summer tyres on Steel	Pirelli	6 mm

Legend: Tread depth information for tires on the left is in the first place, for tires on the right is in the second place on the axle in the direction of travel

Equipment

Standard equipment

- 2 USB-C ports at the front
- Storage compartments in the roof console
- Airbag, head airbag system for front and rear passengers
- Extended warranty, 3 years following the manufacturer's warranty, max. total mileage 50,000 km
- Front air vent and rotary light switch with chrome surround
- Exterior mirror housings and door handles in body color
- Headlining in Storm Grey
- Decorative inlays "Piano Black"
- diesel particulate filter
- Parking assistance
- Electronic parking brake including auto-hold function
- High beam control "Light Assist"
- Windscreen in heat-insulating glass
- Luggage compartment cover
- Luggage compartment floor height adjustable
- Transmission: 7-speed DSG
- Rear window heated
- Interior lights with switch-off delay and dimming function
- Air Care Climatronic air conditioning system
- Front headrests
- Steering wheel: Multifunction steering wheel in leather, with shift paddles
- Front center armrest
- Fatigue detection
- Emergency braking assistant "Front Assist"
- Package: Winter package
- Upholstery: Cloth
- Radio accessories: 8 speakers
- Radio accessories: Digital radio reception DAB+
- Wheels: Light alloy (4) "Galway" 6.5 J x 16
- Drawers under the front seats
- Electromechanical power steering
- Seat belts: 3 three-point automatic belts at the rear
- Seats: Passenger seat backrest completely foldable
- Seats: Comfort seats in the front
- Seats: Front seats height adjustable
- Start-stop system
- Bumpers in body color
- First aid kit and warning triangle and safety vest
- Electronic immobilizer
- Central locking without safe security, with radio remote control and 2 radio folding keys
- Storage compartment with lid on the instrument panel
- Airbag for driver and front passenger
- Ambient lighting
- App-Connect including App-Connect Wireless for Apple CarPlay and Android Auto
- Exterior mirrors electrically adjustable and heated
- Brake light, third
- Roof rails, silver anodized
- Decorative inlays for special model
- tachometer
- Door sills for special model
- Electronic Stability Program (ESP) with counter-steering support
- Baggage management package
- Additional luggage compartment lighting
- Speed limiter
- Glove compartment with cooling option
- Rear window wiper with interval control
- ISOFIX anchor points on rear seats
- Headrests (3) in the 2nd row of seats
- Black radiator grille with chrome strips on the slats
- Headlight range adjustment
- Make-up mirrors in the sun visors, illuminated
- Multifunction display "Plus"
- Non-smoking version
- Emergency call service
- Pedals and footrest in brushed stainless steel
- Proactive occupant protection system in conjunction with "Front Assist"
- Tire pressure monitoring indicator (passive)
- Leather gearshift knob
- Rear side windows and rear window tinted, 65 percent light-absorbing
- Seats: 3 individual seats in the 2nd row
- Seats: Folding tables on the backs of the front seats
- Seats: Lumbar supports in front
- Voice control
- 12V socket on the rear center console
- Textile floor mats
- Warning sound and light for unfastened seat belts at the front and rear
- Black trim strips on the side windows

Extra equipment

- Airbag: Side airbags for the outer rear seats (including front side airbags and head airbag system)
- Trailer hitch, foldable with electric release
- Extended warranty: Cancellation



- Anti-theft alarm system (with interior monitoring, backup horn and tow-away protection)
- Mesh partition
- Package: Driver Assistance Package "Plus" (DSG) (Automatic Distance Control, ACC "Stop & Go" speed, Dynamic High Beam Control, Dynamic Light Assist (automatic headlights, daytime running lights, Leaving Home function and manual Coming Home function), Pedestrian Detection + Active, Automatically dimming interior mirror, LED headlights with LED daytime running lights and cornering lights, Dynamic headlight range control with dynamic cornering, Multifunction camera, Lane Change Assist Plus including Lane Assist and rear parking assist, Rain sensor)
- Wheels: Spare wheel in road tires, steel (tools and jack included)
- Rear View camera (displays the rear area of the vehicle in real time on the radio/navigation system display)
- 230 V socket in the luggage compartment on the left (additional luggage compartment lighting, removable and usable as a flashlight)
- "Discover Media" navigation system including "Streaming & Internet" (20.3 cm screen diagonal, touchscreen, FM radio reception, dual tuner with phase diversity, MP3 playback, SD card slot, USB-C with Apple compatibility, 4x20 watt output, map with 2D display, traffic sign display, telephone interface, 3-way sound control, DAB+ digital radio reception)
- Package: Family (reversible luggage compartment mat, foldable and removable - electric child safety lock for rear doors, operated from the driver's seat - sun blinds on the rear door windows)
- Package: Mirror package (electrically folding exterior mirrors, driver's side dimming, ambient lighting and passenger side mirror lowering - automatic headlight control with daytime running lights, "leaving home" function and manual "coming home" function - interior mirror automatically dimming - rain sensor)
- Auxiliary heating and ventilation (auxiliary heating and ventilation with radio remote control and timer)
- Traffic sign recognition in Vm driver assistance package "Plus"

Brief expert findings

Documents submitted	At the time of the inspection, the registration certificate Part 2 (letter) was available, but the registration certificate Part 1 (certificate) was not. (Copy)
VIN comparison	The vehicle identification number (VIN) was read from the vehicle and its conformity with the submitted documents was verified during the inspection by the undersigned.
Inspection	The inspection conditions were sufficient for the assessment of the vehicle. Lifting equipment and a pit were available for examining the vehicle.
Test drive	No test drive/maneuvering was carried out during the inspection of the vehicle.
Engine function test	An engine test run was performed.

Value reducing factors

No.	Component group	Description
1	Door - rear left side	Door - Scratch(es) - Smart repair
2	Door - front right side	Door - Scratch(es) - Smart repair

Wear and tear

No.	Component group	Description
1	Bonnet	Bonnet - Scratch(es) - No deduction
2	Door - front left side	Door - Scratch(es) - No deduction
3	Door - rear right side	Door - Scratch(es) - No deduction
4	Side panel - rear left side	Side panel - Scratch(es) - Cover / polish
5	Rear bumper	Rear bumper - Scratch(es) - Cover / polish

The vehicle shows signs of wear commensurate with its age and use.

Previous damages

No.	Previous damage	Extent of damage (Net)
1	Rear, Provided by user / customer, from 15 Sept 2024	1.502,39 €

Repainting



No. Repainting

1 Bonnet

Paint coat thickness measurement

Bonnet

223 µm |

Order/Scope of order

The order was placed to prepare a sales report for the vehicle described. This includes the following:

- Description of core relevant information about the vehicle
- Documentation of equipment features
(*Delivery by third-party service providers*)
- Documentation of damage, defects, missing parts
- Documentation of previous damage, unrepaired previous damage, repainting
- a brief visual or functional inspection of the equipment details if possible.
(*Functional tests of driver assistance systems are not included in the scope of services!*)
- a photo documentation of the vehicle

Basis for the order

This product is based on the Alphabet Fuhrpark GmbH guidelines for vehicle returns and valuations. The expert makes the explicit findings in each individual case objectively within the framework of the specified standards based on his or her own expertise.

The vehicle inspection takes place in a disassembled state.

Damage or defects that can only be detected during disassembly/diagnosis work or through advanced knowledge remain within the scope of the prognosis risk. An extended risk exists for concealed defects caused by fraudulent deception and not identifiable by the expert.

Damage or defects resulting from normal use or wear and tear of the vehicle will be accepted according to the applicable standard.

There was no explicit identification or monetary consideration of the expected features within the product.

Features which in their nature and severity slightly exceed normal use but do not constitute unacceptable damage will be documented and identified under signs of use if necessary.

Damage or defects which, according to the underlying standard, can no longer be attributed to normal use or wear and tear are listed in the product under "Depreciating Factors".

Depending on the product specification, a monetary ID can be provided. If this takes place, the costs can be 100% d or pro rata depending on the vehicle's age and mileage.

Previous damages

According to available information previous damages were repaired at the vehicle. Traces of repairs, which allow conclusions about the area of repair, were not recognizable during the inspection.



Figure 1: Diagonal front (left)



Figure 2: Diagonal front (right)



Figure 3: Diagonal rear (left)



Figure 4: Diagonal rear (right)



Figure 5: Interior - front



Figure 6: Interior - rear



Figure 7: Instrument cluster



Figure 8: Instrument panel



Figure 9: interior 360° view ([Online link](#))



Figure 10: Cargo area



Figure 11: VIN



Figure 12: Mounted tyres



Figure 13: Documents



Figure 14: Documents



Figure 15: Navigation



Figure 16: Misc.



Figure 17: Misc.

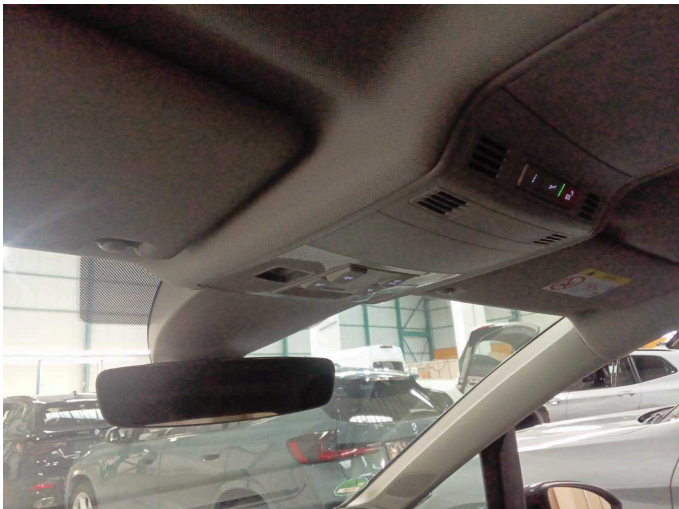


Figure 18: Misc.



Figure 19: Misc.



Figure 20: Misc.



Figure 21: Misc.



Figure 22: Misc.



Figure 23: Misc.



Figure 24: Misc.



Figure 25: Misc.



Figure 26: Misc.



Figure 27: Misc.



Figure 28: Misc.



Damage 1: Door - rear left side: Door - Scratch(es) - Smart repair



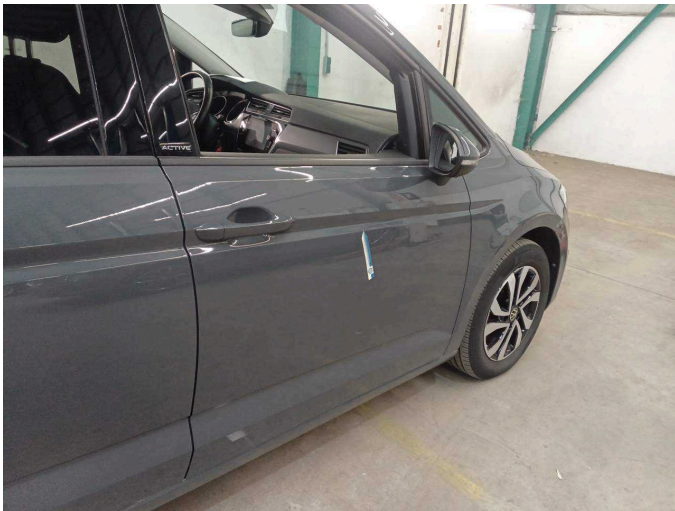
Damage 1: Door - rear left side: Door - Scratch(es) - Smart repair



Damage 1: Door - rear left side: Door - Scratch(es) - Smart repair



Damage 1: Door - rear left side: Door - Scratch(es) - Smart repair



Damage 2: Door - front right side: Door - Scratch(es) - Smart repair



Damage 2: Door - front right side: Door - Scratch(es) - Smart repair



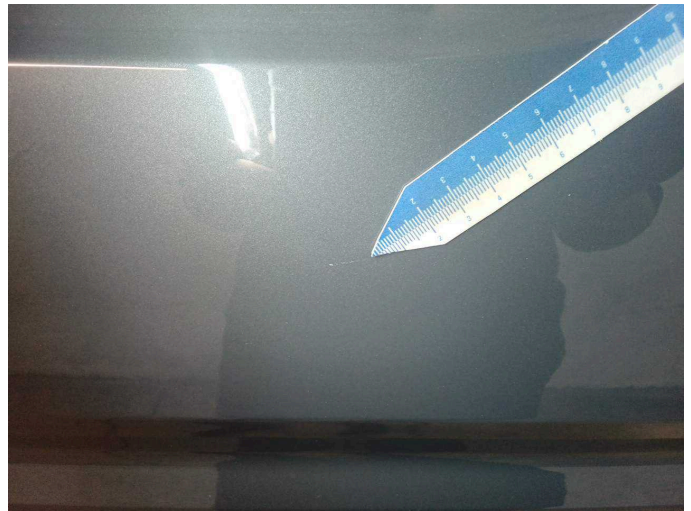
Damage 2: Door - front right side: Door - Scratch(es) - Smart repair



Damage 2: Door - front right side: Door - Scratch(es) - Smart repair



Wear and tear 4: Side panel - rear left side: Side panel - Scratch(es) - Cover / polish



Wear and tear 4: Side panel - rear left side: Side panel - Scratch(es) - Cover / polish



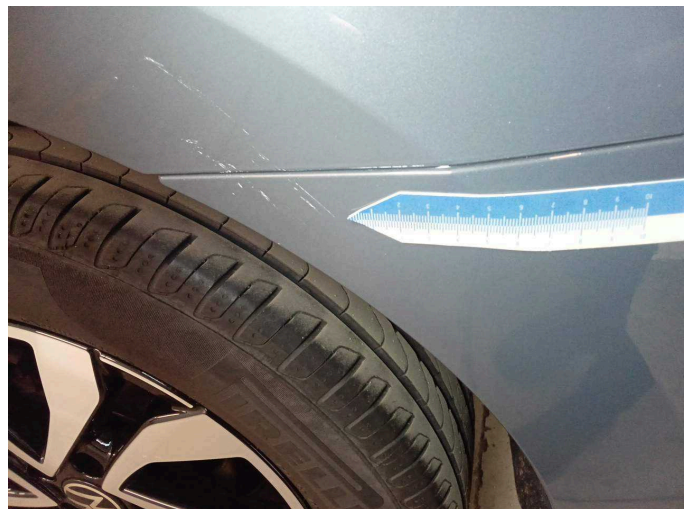
Wear and tear 4: Side panel - rear left side: Side panel - Scratch(es) - Cover / polish



Wear and tear 4: Side panel - rear left side: Side panel - Scratch(es) - Cover / polish



Wear and tear 5: Rear bumper: Rear bumper - Scratch(es) - Cover / polish



Wear and tear 5: Rear bumper: Rear bumper - Scratch(es) - Cover / polish



Wear and tear 5: Rear bumper: Rear bumper - Scratch(es) - Cover / polish



Repainting 1: Bonnet



Bonnet: 223 μm



Wartungshistorie

(gemäß Auftraggeber Informationen)

Fahrgestellnummer: WVGZZZ1TZNW013105

Hersteller / Modell: VOLKSWAGEN VW Touran 2.0 TDI SCR DSG ACTIVE

Datum	KM-Stand	Beschreibung
27.02.2025	64.620	Bremsflüssigkeit; Bremsflüssigkeit ern; Motoröl b. Wartung; Ölfilter ern; Regelwartungsdienst; Wartung Sonstiges
13.10.2023	28.921	Motoröl b. Wartung; Ölfilter ern; Regelwartungsdienst; Wartung Sonstiges