



Expertise

Protocol number: 41154114
Order No. / Reference: 25103350
Inspection date: 20 Aug 2025

Manufacturer: Volkswagen

Model: Touran 2.0 TDI SCR DSG Comfortline

VIN: WVGZZZ1TZNW001267



Vehicle details	
Manufacturer / Type / Model / Equipment	
Volkswagen Touran 2.0 TDI SCR DSG Comfortline	
Vehicle Identification number	WVGZZZ1TZNW001267
Mileage (Read)	104,783 km
First registration	17 Aug 2021
Number of holders	1
Next periodical technical inspection	08/2026
(Report on hand)	
Power / Engine displacement	110 kw / 1,968 ccm
Fuel type / Cylinder	Diesel / 4
Gearbox / Number of gears	Automatic transmission / 7
Type of drive	Front drive
Type of vehicle	Van
Colour / colour code	Deep Black Perleffekt (C9X)
Doors / Seats	5 / 5
Upholstery type	Cloth
Colour of upholstery	Black-Grey
Vehicle with smoke odor	no



Vehicle details

Maintenance booklet / proof	digital proof / complete	Next maintenance in	10,700 km
Last maintenance on / at	12/2024 at 85,401 km		
Key is / should be	2 / 2	FZG documents	ZB#2 (B) was available (copy), ZB#1 (S) was not available
		Letter No.	GF264116
Previous damage / Accident	None detectable	Repainting	None detectable
Inspection conditions	sufficient	Lifting equipment / pit	yes
Test drive	Not performed	Engine function test	Performed
Manufacturer key number/ type code number	0603 / BWR 00322		
Emission standard	EURO6;WLTP;AP;PI/CI; M, N1 I	Fine dust sticker	
Permitted total weight	2,230 kg	Empty weight	

Tyres

Mounted tyres

#	Tyre size	Type of tyre	Manufacturer	Tread depth
1)	205/60 R16 96V	Summer tyres on Light alloy	Pirelli	5mm / 5mm
2)	205/60 R16 96V	Summer tyres on Light alloy	Goodyear	5mm / 5mm

Additional tyres

#	Tyre size	Type of tyre	Manufacturer	Tread depth
1)	205/60 R16 96H	Winter tyres on Light alloy	Dunlop	6mm / 6mm
2)	205/60 R16 96H	Winter tyres on Light alloy	Dunlop	2mm / 2mm

Replacement

Typ	Tyre size	Type of tyre	Manufacturer	Tread depth
	Tirefit	Expiration date 06/2025		

Legend: Tread depth information for tires on the left is in the first place, for tires on the right is in the second place on the axle in the direction of travel

Equipment

Standard equipment

- | | |
|--|--|
| <ul style="list-style-type: none"> • 2 USB-C ports at the front • Storage compartments in the roof console • Airbag, head airbag system for front and rear passengers • Exterior mirror housings and door handles in body color • Headlining in Storm Grey • Decorative inlays "New Brushed Design" • diesel particulate filter • Parking assistance • Electronic Stability Program (ESP) with counter-steering support • Luggage compartment cover • Luggage compartment floor height adjustable • Transmission: 7-speed DSG • Rear window heated • Interior lights with switch-off delay and dimming function, 2 reading lights front and rear • Headrests (3) in the 2nd row of seats • Black radiator grille with chrome strips on the slats • Steering wheel: leather • Make-up mirrors in the sun visors, illuminated • Multifunction display "Plus" • Non-smoking version • Emergency call service • Proactive occupant protection system in conjunction with "Front Assist" • Tire pressure monitoring indicator (passive) • Wheels: Tire Mobility Set • Drawers under the front seats • Seat belts: 3 three-point automatic belts at the rear • Seats: Passenger seat backrest completely foldable • Seats: Comfort seats in the front • Seats: Front seats height adjustable • 12V socket on the rear center console • Daytime running light • First aid kit and warning triangle and safety vest • Electronic immobilizer • Green thermal insulation glazing • Black trim strips on the side windows | <ul style="list-style-type: none"> • Storage compartment with lid on the instrument panel • Airbag for driver and front passenger • Exterior mirrors electrically adjustable and heated • Brake light, third • Roof rails black • Decorative inlays "Piano Black" • tachometer • Electronic parking brake including auto-hold function • Windscreen in heat-insulating glass • Baggage management package • Additional luggage compartment lighting • Speed limiter • Glove compartment with cooling option • Rear window wiper with interval control • ISOFIX anchor points on rear seats • Air conditioning • Front headrests • Paint finish: Uni • Headlight range adjustment • Front center armrest • Fatigue detection • Emergency braking assistant "Front Assist" • Upholstery: Cloth • Radio "Composition" • Radio accessories: 8 speakers • Wheels: Light alloy (4) "Karlstad" 6.5 J x 16 • Leather gearshift knob • Electromechanical power steering • Seats: 3 individual seats in the 2nd row • Seats: Folding tables on the backs of the front seats • Seats: Lumbar supports in front • Start-stop system • Bumpers in body color • Textile floor mats • Warning sound and light for unfastened seat belts at the front and rear • Central locking without safe security, with radio remote control and 2 radio folding keys |
|--|--|

Extra equipment

- | | |
|--|--|
| <ul style="list-style-type: none"> • Anti-theft alarm system (with interior monitoring, backup horn and tow-away protection) • Finish: pearl effect • LED headlights (LED headlights with daytime running lights - dynamic headlight range adjustment) • Fog lights and cornering lights • Mesh partition | <ul style="list-style-type: none"> • Tailgate with electric opening and closing • Air Care Climatronic air conditioning system (with active combi filter, rear controls, and 3-zone temperature control) |
|--|--|



- Package: Ambient lighting (ambient lighting, illuminated light strips on the front door trims, door handles, and door armrests - "Piano Black" decorative inlays for the instrument panel and front door trim - interior lights with delayed switch-off and dimming function, 2 LED reading lights at the front and rear - LED light in the front footwell)
- Package: Mirror package (electrically folding exterior mirrors, driver's side dimming, ambient lighting and passenger side mirror lowering - automatic headlight control with daytime running lights, "leaving home" function and manual "coming home" function - interior mirror automatically dimming - rain sensor)
- Rear View camera (displays the rear area of the vehicle in real time on the radio/navigation system display)
- Auxiliary heating and ventilation (auxiliary heating and ventilation with radio remote control and timer)
- "Comfort" telephone interface with inductive charging function (hands-free system)
- "Discover Media" navigation system including "Streaming & Internet" (20.3 cm screen diagonal, touchscreen, FM radio reception, dual tuner with phase diversity, MP3 playback, SD card slot, USB-C with Apple compatibility, 4x20 watt output, map with 2D display, traffic sign display, telephone interface, 3-way sound control, DAB+ digital radio reception)
- Package: Business Premium (Air Care Climatronic, combination filter -ACC stop & go, speed limiter, front as. -Lumbar supports front, driver's side, electrically adjustable with massage function - Multifunction steering wheel leather, shift paddles -Mesh partition - Windscreen washer fluid heated -Headlight cleaning system -Drawer under right front seat -Seat center panels micro fleece -Top comfort seats front, heated -Emergency brake assist. "Front Assist" -Height-adjustable front seats, ergoActive seat on the driver's side -Warning light for washer fluid.)
- Rear side windows and rear window tinted
- 230 V socket in the luggage compartment on the left (additional luggage compartment lighting, removable and usable as a flashlight)

Brief expert findings

Documents submitted	At the time of the inspection, the registration certificate Part 2 (letter) was available, but the registration certificate Part 1 (certificate) was not. (Copy)
VIN comparison	The vehicle identification number (VIN) was read from the vehicle and its conformity with the submitted documents was verified during the inspection by the undersigned.
Inspection	The inspection conditions were sufficient for the assessment of the vehicle. Lifting equipment and a pit were available for examining the vehicle.
Test drive	No test drive/maneuvering was carried out during the inspection of the vehicle.
Engine function test	An engine test run was performed.

Value reducing factors

No.	Component group	Description
1	2nd wheel set	2 tyres (<4mm) - Worn - No deduction
2	Equipment	Tirefit filler - Expired - Replace
3	Side panel - rear left side	Side panel - Scratch(es) - Smart repair
4	Rear bumper	Rear bumper - Scratch(es) - Smart repair
5	Engine	Engine - Noise - Perform diagnosis
6	Front bumper	Front bumper - Scratched - Paint
7	Door - rear left side	Door - Scratch(es) - Paint
8	Door - rear right side	Door - Scratch(es) - Paint

Wear and tear

No.	Component group	Description
1	Bonnet	Bonnet - Stone chips - No deduction
2	Interior	Interior - Soiled - No deduction
3	Trim / covers	Floor mats - Damaged - No deduction

The vehicle shows signs of wear commensurate with its age and use.



Order/Scope of order

The order was placed to prepare a sales report for the vehicle described. This includes the following:

- Description of core relevant information about the vehicle
- Documentation of equipment features
(Delivery by third-party service providers)
- Documentation of damage, defects, missing parts
- Documentation of previous damage, unrepaired previous damage, repainting
- a brief visual or functional inspection of the equipment details if possible.
(Functional tests of driver assistance systems are not included in the scope of services!)
- a photo documentation of the vehicle

Basis for the order

This product is based on the Alphabet Fuhrpark GmbH guidelines for vehicle returns and valuations. The expert makes the explicit findings in each individual case objectively within the framework of the specified standards based on his or her own expertise.

The vehicle inspection takes place in a disassembled state.

Damage or defects that can only be detected during disassembly/diagnosis work or through advanced knowledge remain within the scope of the prognosis risk. An extended risk exists for concealed defects caused by fraudulent deception and not identifiable by the expert.

Damage or defects resulting from normal use or wear and tear of the vehicle will be accepted according to the applicable standard.

There was no explicit identification or monetary consideration of the expected features within the product.

Features which in their nature and severity slightly exceed normal use but do not constitute unacceptable damage will be documented and identified under signs of use if necessary.

Damage or defects which, according to the underlying standard, can no longer be attributed to normal use or wear and tear are listed in the product under "Depreciating Factors".

Depending on the product specification, a monetary ID can be provided. If this takes place, the costs can be 100% d or pro rata depending on the vehicle's age and mileage.

Previous damages

Apparently, no repaired previous damage could be found on the vehicle.

Comments

Das Fahrzeug befand sich zum Besichtigungszeitpunkt in beschädigten, nicht demontierten Zustand. Schadenausweitung möglich, Zusatzkosten können entstehen.

Der Winterradsatz ist nicht Bestandteil der vorliegenden Fahrzeugausstattung.



Figure 1: Diagonal front (left)



Figure 2: Diagonal front (right)



Figure 3: Diagonal rear (left)



Figure 4: Diagonal rear (right)



Figure 5: Interior - front



Figure 6: Interior - rear



Figure 7: Instrument cluster



Figure 8: Instrument panel



Figure 9: interior 360° view



Figure 10: Cargo area

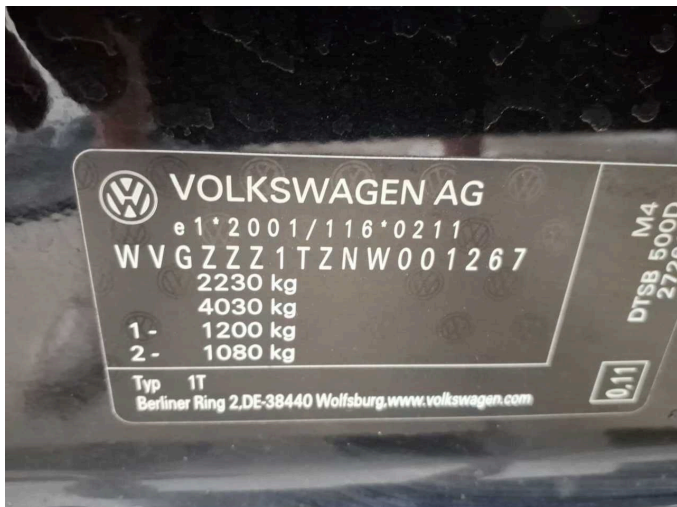


Figure 11: VIN



Figure 12: Mounted tyres



Figure 13: Documents

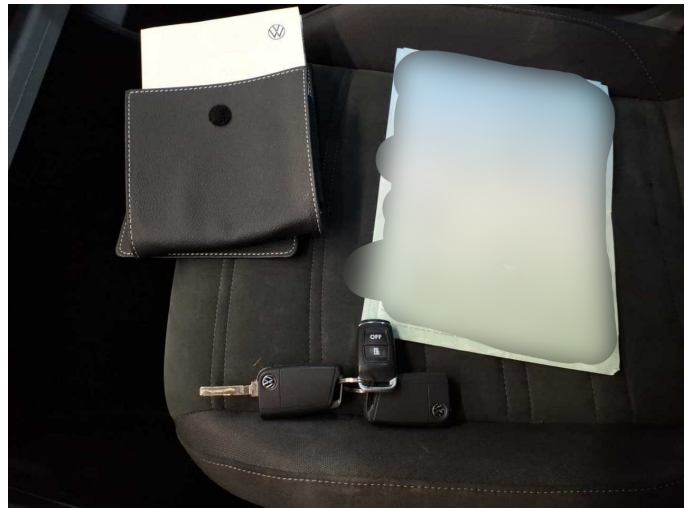


Figure 14: Documents



Figure 15: Additional tyres



Figure 16: Navigation



Figure 17: Misc.



Figure 18: Misc.



Figure 19: Misc.



Figure 20: Misc.



Figure 21: Misc.



Figure 22: Misc.



Figure 23: Misc.



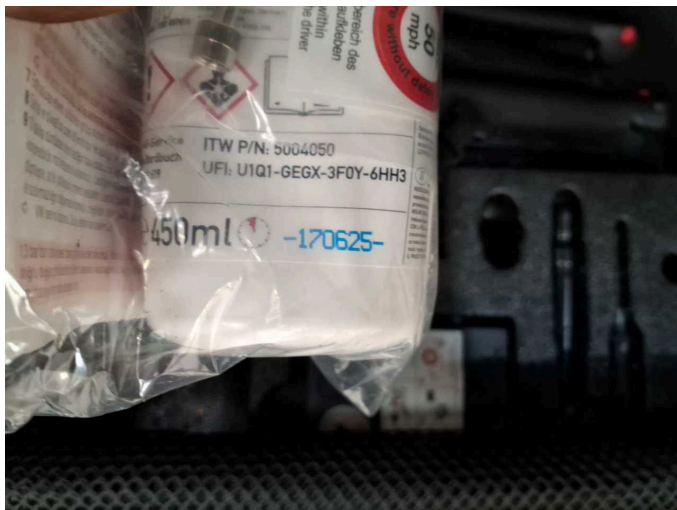
Figure 24: Misc.



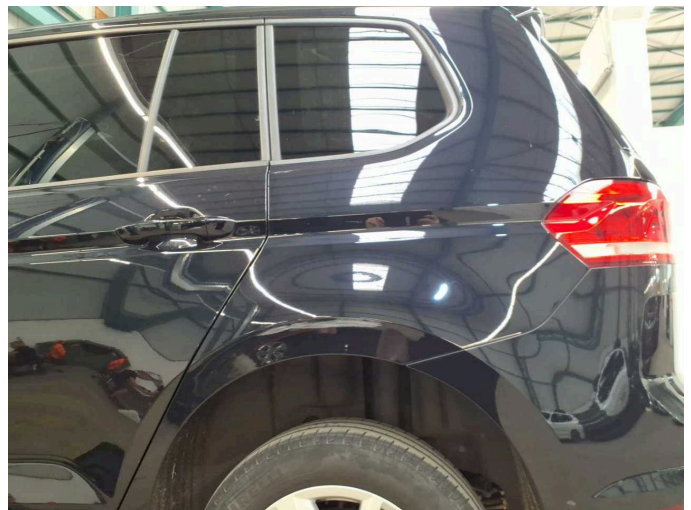
Damage 1: 2nd wheel set: 2 tyres (<4mm) - Worn - No deduction



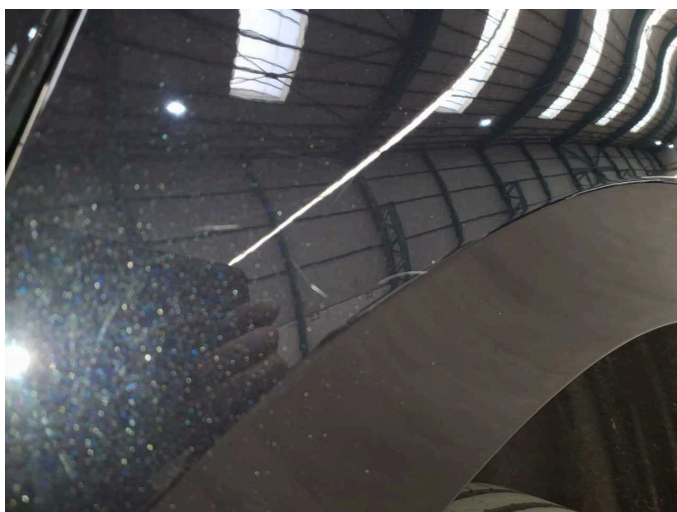
Damage 1: 2nd wheel set: 2 tyres (<4mm) - Worn - No deduction



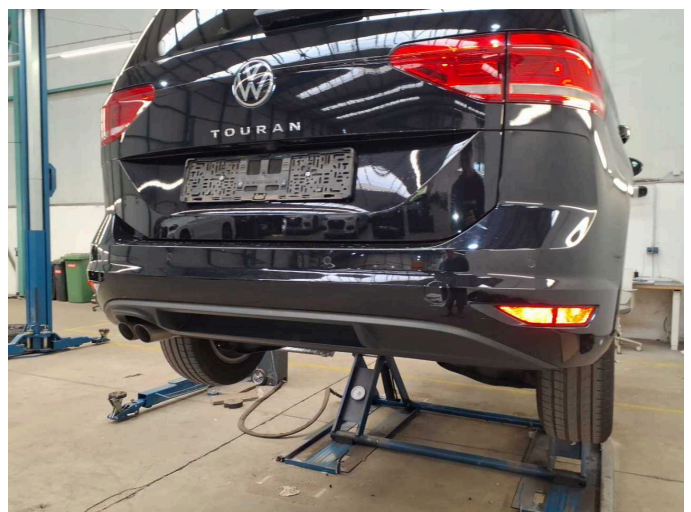
Damage 2: Equipment: Tirefit filler - Expired - Replace



Damage 3: Side panel - rear left side: Side panel - Scratch(es) - Smart repair



Damage 3: Side panel - rear left side: Side panel - Scratch(es) - Smart repair



Damage 4: Rear bumper: Rear bumper - Scratch(es) - Smart repair



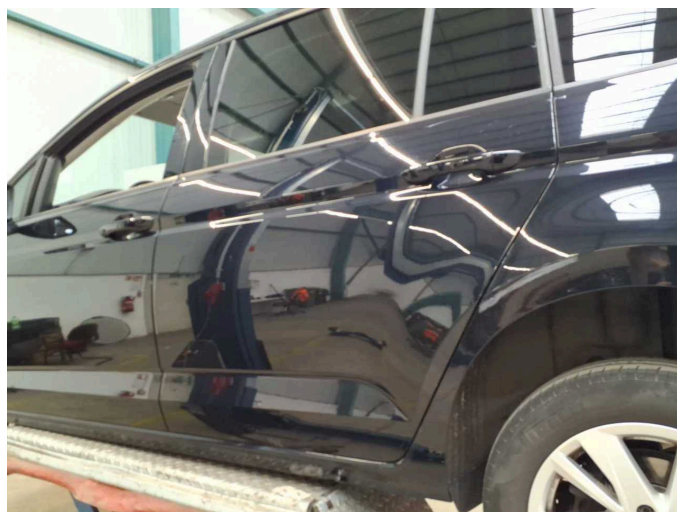
Damage 4: Rear bumper: Rear bumper - Scratch(es) - Smart repair



Damage 6: Front bumper: Front bumper - Scratched - Paint



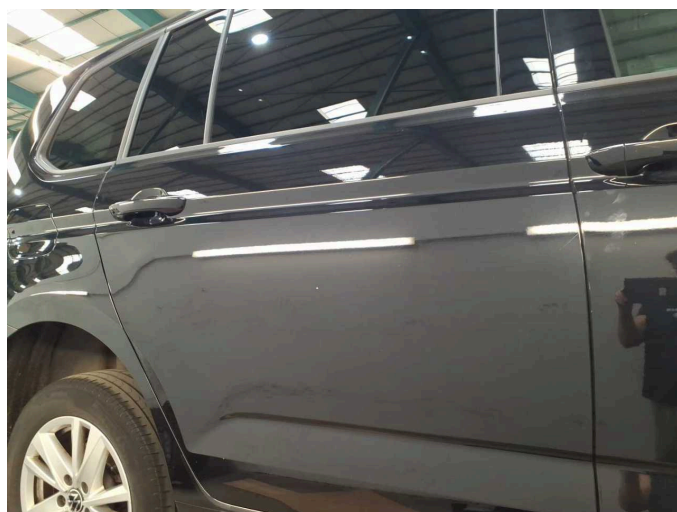
Damage 6: Front bumper: Front bumper - Scratched - Paint



Damage 7: Door - rear left side: Door - Scratch(es) - Paint



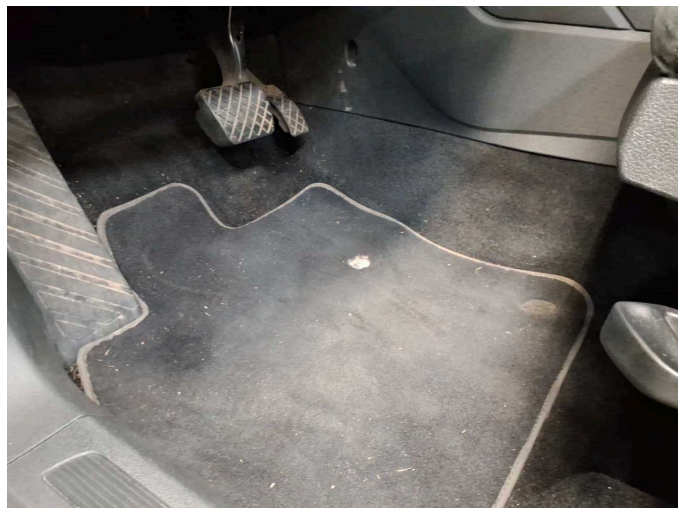
Damage 7: Door - rear left side: Door - Scratch(es) - Paint



Damage 8: Door - rear right side: Door - Scratch(es) - Paint



Damage 8: Door - rear right side: Door - Scratch(es) - Paint



Wear and tear 3: Trim / covers: Floor mats - Damaged - No deduction