



# VOLKSWAGEN Touran

## Touran 2.0 TDI SCR DSG

VIN NO WVGZZZ1TZW029465  
Registration Number TZW029465



MOT Date

2026-05-01

Last Service



Number of Owners

1

Last Service Mileage



Number of Keys

2

First Registration Date

2021-05-03

Odometer Reading

84294 km

Country First Registered

Germany

### Inspection Report Summary

Customer	BCA Online	Report Number	P20251009093438
Inspection Date / Place	2025-10-09 / BCA Neuss	Cosmetic Grade	2

### Vehicle Summary

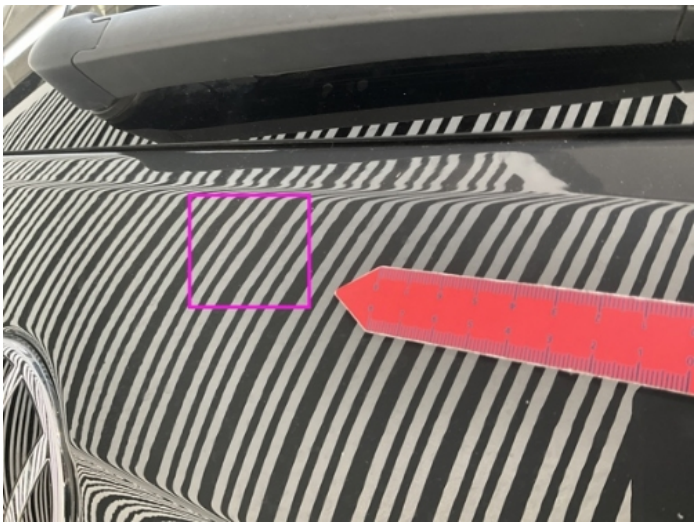
Vehicle Condition	Runner	VAT Type	Qualifying
Fuel Type	Diesel	Road Worthy	Yes
Colour	Grey	Engine Size (cc)	1968
Engine Size	2.0	No of Doors	5
Body Type	Stationwagon / Estate	Drive Train	Front
Seat Colour		No of Seats	5
Seat Covering Name	anthrazit	Seat Covering	Cloth
Charging Cables		NEDC CO2 Rating (q/km)	121
Gearbox Type	Automatic		

### Vehicle History & Documents

Service Book Available	Missing	Next Service Mileage	km
Previous Usage		Imported	No
Manufacturer Warrenty			







Equipment

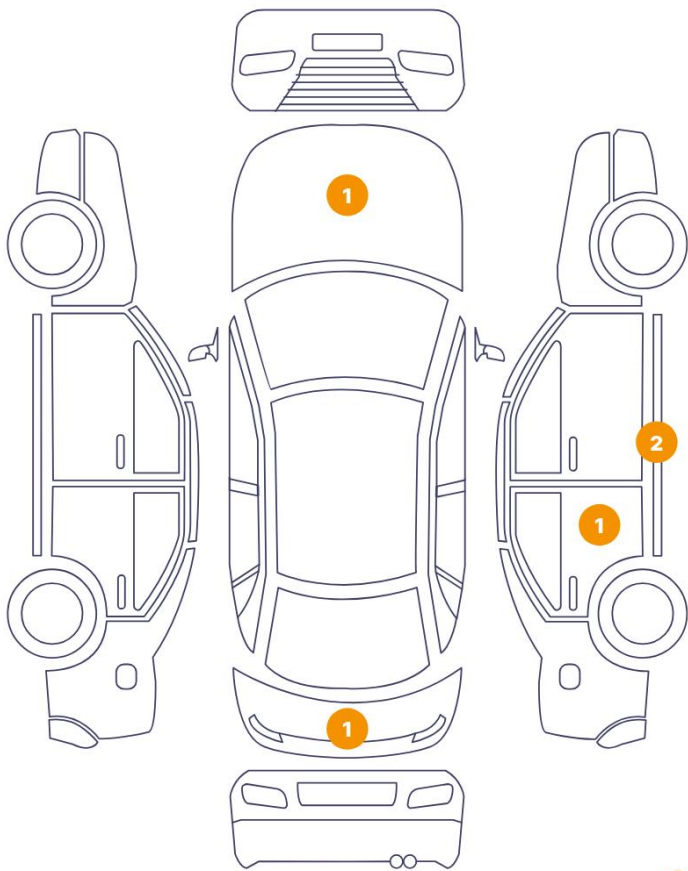
Tinted Glass	Adaptivecruisecontrol	Alloys wheels	Bluetooth telephone interface
Diesel particulate filter	Front parking sensors	Remote adjusting wing mirrors	Roof rails
Stability control	Leather steering wheel	Tow ball	Airbag Status
Anti-lock braking	Cruise control	Digital Radio	Heated wing mirrors
Remote central locking	Satellite navigation	Electrically folding wing mirrors	Rear parking sensors

Equipment Details

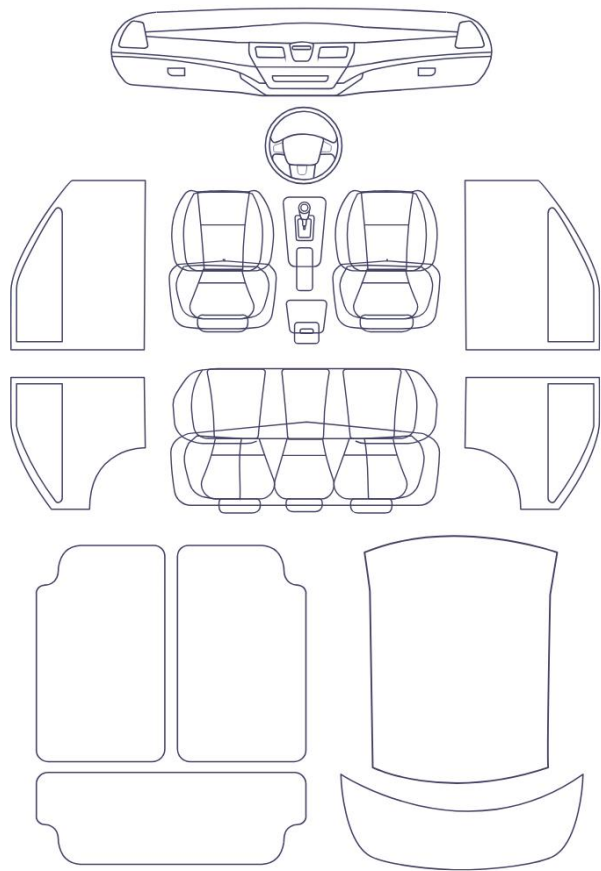
Tow Ball Type	Pivoted	Air Conditioning	Three Zone Climate Control
Alloy Wheel Size	16	Extra Wheel / Tyre Set	Winter Tyres - Steel
Seat Heating	Front		

Cosmetic Damage

6 Schäden

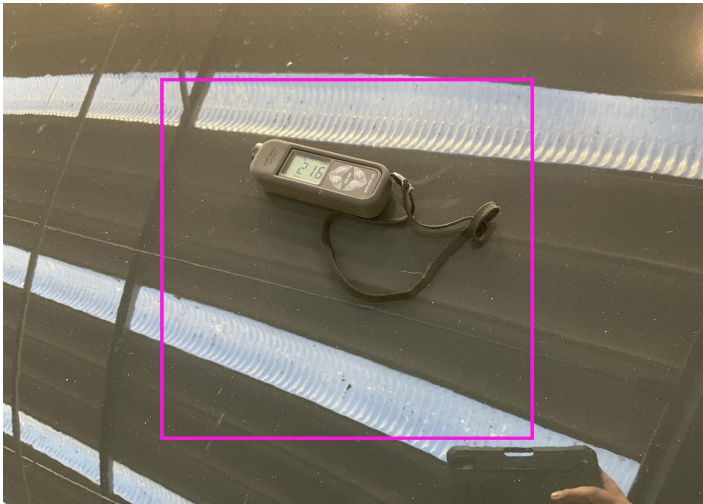


0 Schäden

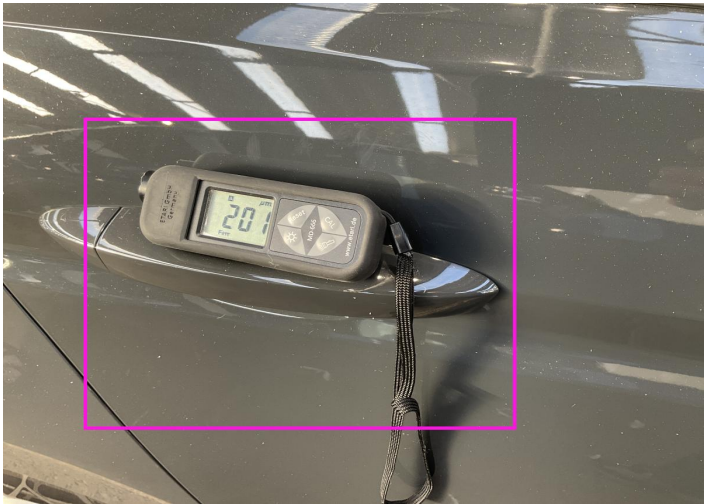


48 1

Component	Damage	Comments
1 Hood	Paint / Poor Previous Repair	
2 Door / Back Right	Paint / Poor Previous Repair	
3 Other	Bodywork / Breakage / Crack	
4 Rocker Panel / Center Right	Bodywork / Dent / Dent	
5 Rocker Panel / Center Right	Bodywork / Dent / Dent	
6 Tailgate	Bodywork / Dent / Dent	



1. Hood  
Paint / Poor Previous Repair -



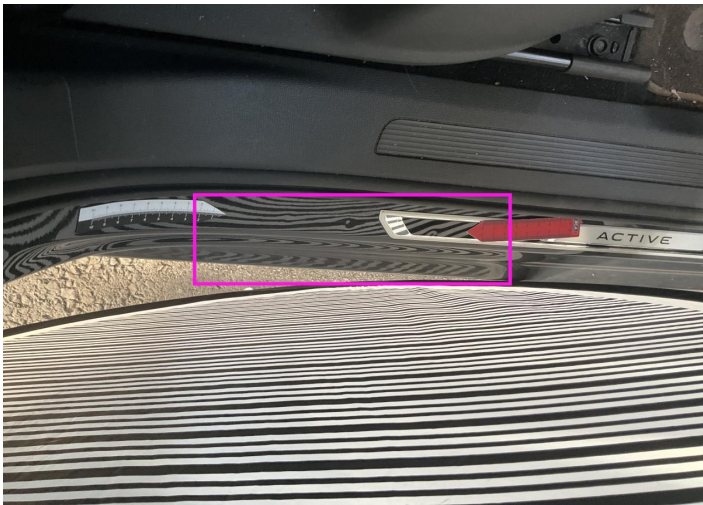
2. Door / Back Right  
Paint / Poor Previous Repair -



3.  
Bodywork / Breakage / Crack -



4. Rocker Panel / Center Right  
Bodywork / Dent / Dent -



5. Rocker Panel / Center Right  
Bodywork / Dent / Dent -



6. Tailgate  
Bodywork / Dent / Dent -

## Mechanical Condition

### Control Lights

ABS Warning Light	✓	ESP Fault/Traction Control Malfunction Light	✓
Diesel Particulate Filter Light	✓	Airbag Warning Light	✓
Oil Pressure Warning Light	✓	Brake Warning Light	✓
Power Steering Warning Light	✓	Alternator / Battery	✓
No Dashboard Lights	✓	Display Defect	✓
Tire Pressure Monitoring System	✓		

### Engine

Engine Status / EML	✓	Engine Leak Visible	✓
Engine Starts	✓		

### Gearbox

Gear Box	✓
----------	---

### Equipments Test

Electric Windows	✓	Audio Equipment	✓
Navigation System	✓	Parking Sensors / Cameras Functioning	✓

### Levels

Brakes Fluid	✓	Coolant Fluid	✓
--------------	---	---------------	---

Test Drive Inspection

Steering Wheel			
Steering   Noise / Anomaly		✓	
Engine			
Engine Noise	✓	The Gears Scratch / Skip / Abnormal Operation	✓
Fume Quantity	✓	Power Loss	✓
Brake			
Brake System Anomaly		✓	
General			
Test Driven Status		✓	
✓ <i>No troubles detected, good condition or correct tests, according to vehicle age and mileage</i>			
! <i>Damages or malfunction detected that requires repairs by the buyer</i>			
NA <i>Not applicable</i>			
= <i>Not tested</i>			

Disclaimer

Please also note the "UserGuide condition report", which shows the scope of the vehicle description.

[User Guide](#)