



# VOLKSWAGEN Touran

## Touran 2.0 TDI SCR DSG

VIN NO WVGZZZ1TZMW029465  
Registration Number TZMW029465



MOT Date

2026-05-01

Last Service



Number of Owners

1

Last Service Mileage



Number of Keys

2

First Registration Date

2021-05-03

Odometer Reading

84294 km

Country First Registered

Germany

### Inspection Report Summary

Customer	BCA Online	Report Number	P20251009093438
Inspection Date / Place	2025-10-09 / BCA Neuss	Cosmetic Grade	2

### Vehicle Summary

Vehicle Condition	Runner	VAT Type	Qualifying
Fuel Type	Diesel	Road Worthy	Yes
Colour	Grey	Engine Size (cc)	1968
Engine Size	2.0	No of Doors	5
Body Type	Stationwagon / Estate	Drive Train	Front
Seat Colour		No of Seats	5
Seat Covering Name	anthrazit	Seat Covering	Cloth
Charging Cables		NEDC CO2 Rating (q/km)	121
Gearbox Type	Automatic		

### Vehicle History & Documents

Service Book Available	Missing	Next Service Mileage	km
Previous Usage		Imported	No
Manufacturer Warranty			







## Equipment

---

Tinted Glass	Adaptivecruisecontrol	Alloys wheels	Bluetooth telephone interface
Diesel particulate filter	Front parking sensors	Remote adjusting wing mirrors	Roof rails
Stability control	Leather steering wheel	Tow ball	Airbag Status
Anti-lock braking	Cruise control	Digital Radio	Heated wing mirrors
Remote central locking	Satellite navigation	Electrically folding wing mirrors	Rear parking sensors

## Equipment Details

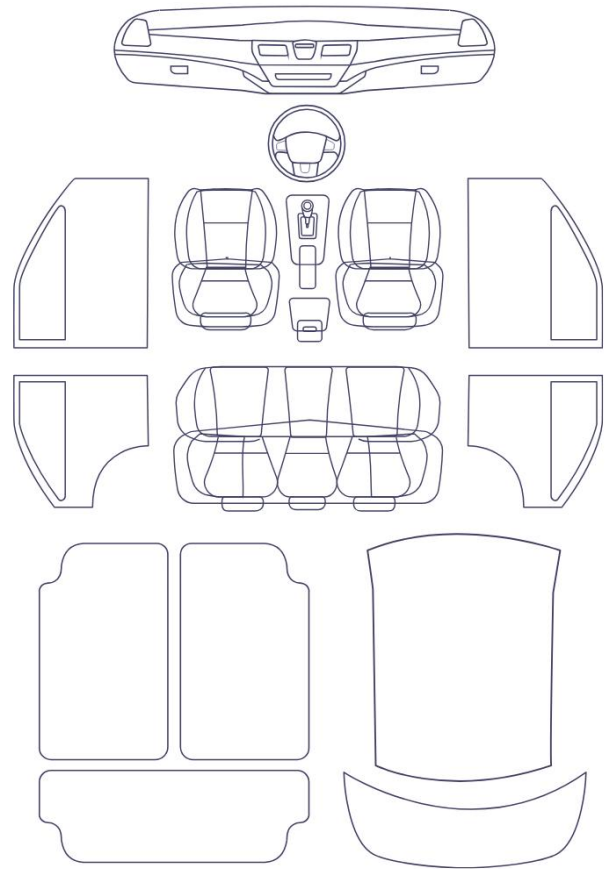
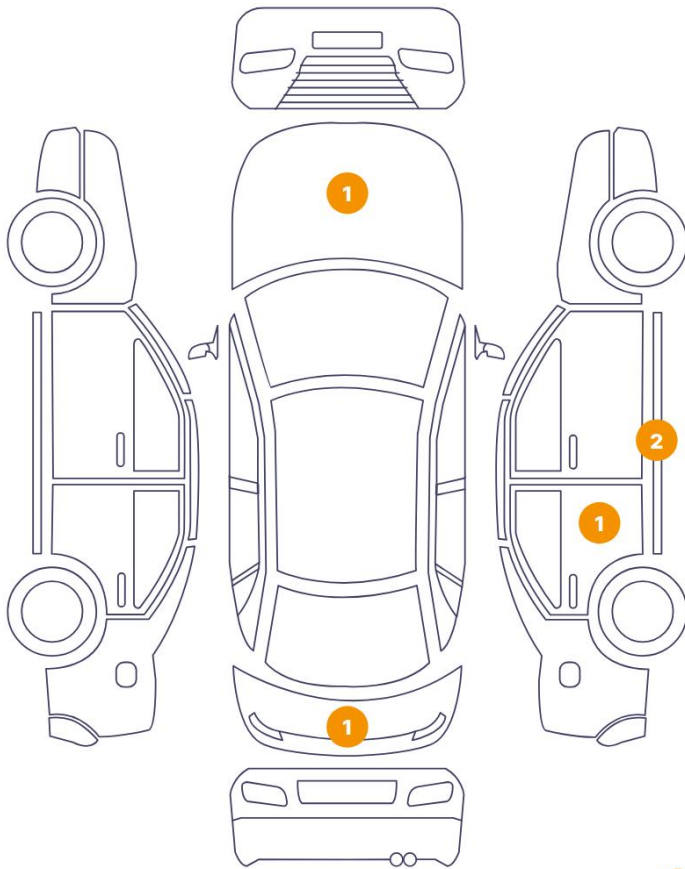
---

Tow Ball Type	Pivoted	Air Conditioning	Three Zone Climate Control
Alloy Wheel Size	16	Extra Wheel / Tyre Set	Winter Tyres - Steel
Seat Heating	Front		

# Cosmetic Damage

6 Schäden

0 Schäden

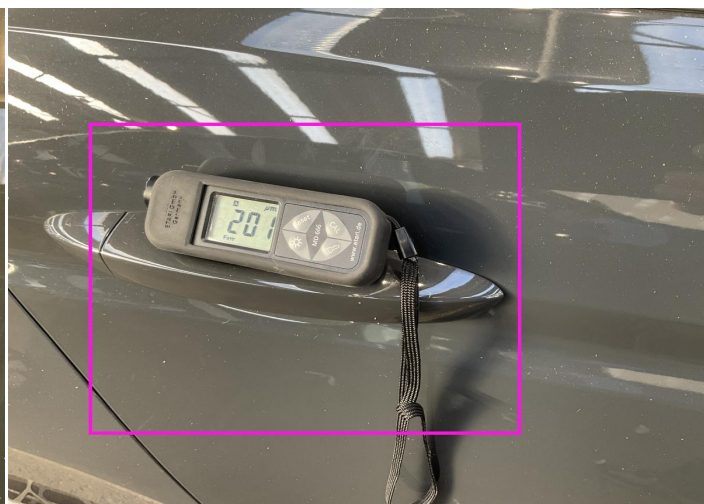


48 1

Component	Damage	Comments
1 Hood	Paint / Poor Previous Repair	
2 Door / Back Right	Paint / Poor Previous Repair	
3 Other	Bodywork / Breakage / Crack	
4 Rocker Panel / Center Right	Bodywork / Dent / Dent	
5 Rocker Panel / Center Right	Bodywork / Dent / Dent	
6 Tailgate	Bodywork / Dent / Dent	



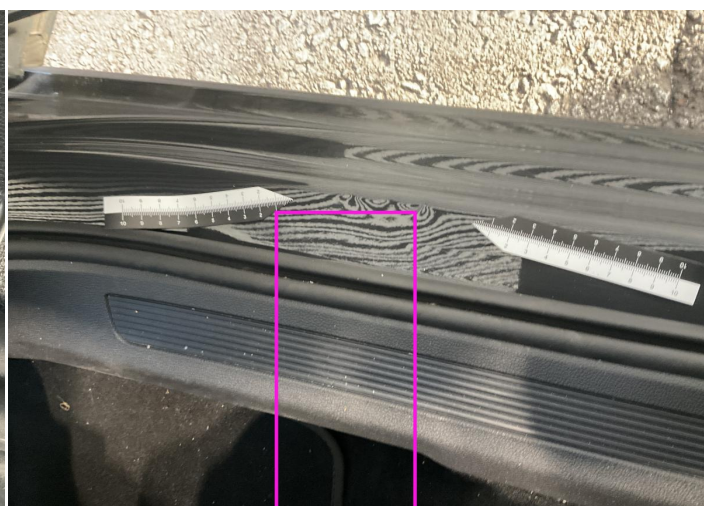
1. Hood  
Paint / Poor Previous Repair -



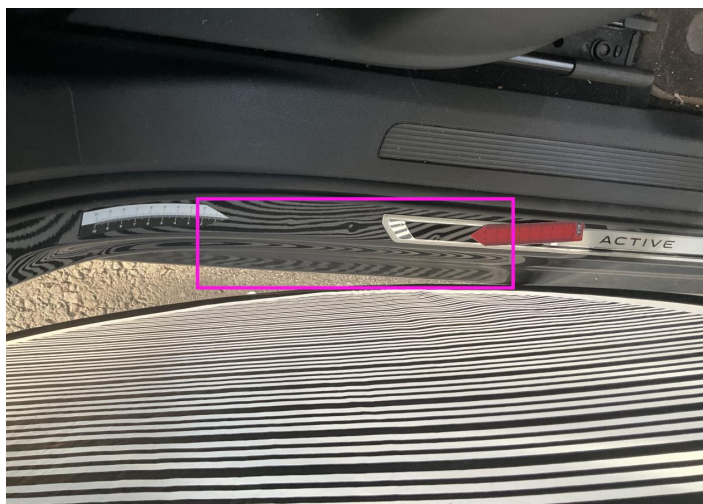
2. Door / Back Right  
Paint / Poor Previous Repair -



3.  
Bodywork / Breakage / Crack -



4. Rocker Panel / Center Right  
Bodywork / Dent / Dent -



5. Rocker Panel / Center Right  
Bodywork / Dent / Dent -



6. Tailgate  
Bodywork / Dent / Dent -

## Mechanical Condition

### Control Lights

ABS Warning Light	✓	ESP Fault/Traction Control Malfunction Light	✓
Diesel Particulate Filter Light	✓	Airbag Warning Light	✓
Oil Pressure Warning Light	✓	Brake Warning Light	✓
Power Steering Warning Light	✓	Alternator / Battery	✓
No Dashboard Lights	✓	Display Defect	✓
Tire Pressure Monitoring System	✓		

### Engine

Engine Status / EML	✓	Engine Leak Visible	✓
Engine Starts	✓		

### Gearbox

Gear Box	✓
----------	---

### Equipments Test

Electric Windows	✓	Audio Equipment	✓
Navigation System	✓	Parking Sensors / Cameras Functioning	✓

### Levels


Brakes Fluid	✓	Coolant Fluid	✓
--------------	---	---------------	---



## Test Drive Inspection

---

### Steering Wheel

Steering | Noise / Anomaly 

### Engine


Engine Noise  The Gears Scratch / Skip / Abnormal Operation 

Fume Quantity  Power Loss 

### Brake

Brake System Anomaly 

### General

Test Driven Status 

 **No troubles detected, good condition or correct tests, according to vehicle age and mileage**

 **Damages or malfunction detected that requires repairs by the buyer**

 **Not applicable**

 **Not tested**

### Disclaimer

---

Please also note the "UserGuide condition report", which shows the scope of the vehicle description.

[User Guide](#)