



Expertise

Protocol number: 41484339
Order No. / Reference: 25184087
Inspection date: 10 Sept 2025

Manufacturer: Volkswagen	Model: Touran 2.0 TDI SCR Comfortline
VIN: WVGZZZ1TZLW053199	



Vehicle details	
Manufacturer / Type / Model / Equipment	
Volkswagen Touran 2.0 TDI SCR Comfortline	
Vehicle Identification number	WVGZZZ1TZLW053199
Mileage (Read)	100,938 km
First registration	11 Aug 2020
Number of holders	2
Next periodical technical inspection	09/2025
(Report on hand)	
Power / Engine displacement	110 kw / 1,968 ccm
Fuel type / Cylinder	Diesel / 4
Gearbox / Number of gears	Manual / 6
Type of drive	Front drive
Type of vehicle	Van
Colour / colour code	Caribbean Blue Metallic (D5J)
Doors / Seats	5 / 5
Upholstery type	Cloth
Colour of upholstery	Black-Anthracite
Vehicle with smoke odor	no



Vehicle details			
Maintenance booklet / proof	digital proof / complete	Next maintenance in	21 Tag(e)
Last maintenance on / at	06/2025 at 93,294 km		
Key is / should be	2 / 2	FZG documents	ZB#2 (B) was available (copy), ZB#1 (S) was not available
		Letter No.	FU551506
Previous damage / Accident	None detectable	Repainting	None detectable
Inspection conditions	sufficient	Lifting equipment / pit	yes
Test drive	short drive on the company premises	Engine function test	Performed
Manufacturer key number/ type code number	0603 / BWR 00203		
Emission standard	EURO6;WLTP;DG;PI/CI; M, N1 I	Fine dust sticker	
Permitted total weight	2,190 kg	Empty weight	

Tyres				
Mounted tyres				
#	Tyre size	Type of tyre	Manufacturer	Tread depth
1)	205/60 R16 96V	Summer tyres on Light alloy	Pirelli	5mm / 5mm
2)	205/60 R16 96V	Summer tyres on Light alloy	Pirelli	7mm / 7mm
Replacement				
Typ	Tyre size	Type of tyre	Manufacturer	Tread depth
	Tirefit	Expiration date 03/2024		
Legend: Tread depth information for tires on the left is in the first place, for tires on the right is in the second place on the axle in the direction of travel				

Equipment

Standard equipment

- Storage compartment with lid on the instrument panel
- Airbag for driver and front passenger (with passenger airbag deactivation, including knee airbag on the driver's side)
- Exterior mirror housings and door handles in body color
- Brake light, third
- Roof rails black
- Decorative inlays "Piano Black" (for center console)
- diesel particulate filter
- Electronic parking brake including auto-hold function
- Electronic Stability Program (ESP) with counter-steering support (including ABS with brake assist, ASR (traction control), EDL (electronic differential lock), MSR (engine drag torque control) and trailer stabilization)
- Additional luggage compartment lighting (removable and usable as a flashlight)
- Speed limiter
- Transmission: 6-speed manual transmission
- Rear window heated
- Interior lights with switch-off delay and dimming function, 2 reading lights front and rear
- License plate lighting in LED technology
- Instrument cluster with electronic speedometer, odometer, trip meter, tachometer
- Black radiator grille with chrome strips on the slats
- Steering wheel: leather (gear lever knob in leather)
- Make-up mirrors in the sun visors, illuminated
- Multifunction display "Plus"
- Fatigue detection (detects signs of driver fatigue based on characteristic steering behavior, time of day, and driving duration and issues a visual and acoustic warning)
- Emergency call service (no registration required, service is activated upon delivery)
- Upholstery: Cloth
- Composition radio (16.5 cm screen diagonal - touchscreen - FM radio reception - phase diversity - MP3 playback - USB-C with Apple compatibility - 4 x 20 watt output - telephone interface - 3-way tone control - DAB+ digital radio reception)
- Radio accessories: 8 speakers
- Tire pressure monitoring indicator (passive)
- Wheels: Tire Mobility Set (12-volt compressor and tire sealant)
- Drawers under the front seats
- Seat belts: 3 three-point automatic belts at the rear (and belt tensioners at the rear)
- Seats: 3 individual seats in the 2nd row (length adjustment, backrest angle adjustment, armrest and "EasyFold" folding function)
- Storage compartments in the roof console
- Airbag, head airbag system for front and rear passengers (including front side airbags)
- Exterior mirrors electrically adjustable and heated (driver's side aspherical)
- Headlining in Storm Grey
- "New Brushed Design" decorative inlays (for instrument panel and front door panels)
- Parking aid (acoustic warning signals for obstacles in the front and rear areas)
- Windscreen in heat-insulating glass
- Luggage management package (with rail-mounted luggage net)
- Luggage compartment cover (with convenient opening, extendable, removable and stowable)
- Luggage compartment floor height adjustable (with fixing element)
- Glove compartment with cooling option
- Rear window wiper with interval control
- ISOFIX anchor points on rear seats (device for attaching child seats to the rear seats)
- Air conditioning (with active combination filter)
- Headrests (3) in the 2nd row of seats (height adjustable)
- Front headrests (safety-optimized, length and height adjustable)
- Headlight range adjustment
- Front center armrest (height and length adjustable - with removable storage box - 2 rear air vents)
- Non-smoking version (socket instead of cigarette lighter in front)
- Emergency braking assistant "Front Assist" (proactive occupant protection system in conjunction with "Front Assist")
- Proactive occupant protection system in conjunction with "Front Assist" (detects critical traffic situations with increased accident potential - prepares vehicle occupants and the vehicle for a possible accident by tightening the front seat belts, restraining the driver and front passenger, and closing open windows and the sunroof except for a crack)
- Wheels: Light alloy (4) "Karlstad" 6.5 J x 16 (tires 205/60 R 16)
- Leather gearshift knob
- Electromechanical power steering (speed-dependent control)
- Seat belts: Three-point automatic belts in the front with height adjustment and belt tensioner
- Seats: Passenger seat backrest completely foldable (with table and through-loading function)
- Seats: Comfort seats in the front
- Seats: Lumbar supports in front
- Start-stop system (with brake energy recovery)
- Bumpers in body color
- Daytime running light



- Seats: Folding tables on the back of the front seats (adjustable inclination)
- Seats: Front seats height adjustable
- 12-V socket on the rear center console (and in the luggage compartment)
- Textile floor mats (front and rear)
- Warning sound and light for unfastened seat belts at the front and rear
- Central locking without safe security, with radio remote control and 2 radio folding keys

- First aid kit and warning triangle and safety vest
- Electronic immobilizer
- Green thermal insulation glazing (side and rear)
- Black trim strips on the side windows

Extra equipment

- Active Lighting System (Dynamic Light Assist dynamic high beam control - automatic headlight control with daytime running lights, leaving home function, and manual coming home function - automatically dimming interior mirror - LED headlights with cornering lights and LED daytime running lights - dynamic headlight range control with dynamic cornering lights - rain sensor)
- "Discover Media" navigation system including "Streaming & Internet" (20.3 cm screen diagonal, touchscreen, FM radio reception, dual tuner with phase diversity, MP3 playback, SD card slot, USB-C with Apple compatibility, 4x20 watt output, map with 2D display, traffic sign display, telephone interface, 3-way sound control, DAB+ digital radio reception)
- Traffic sign recognition in Vm driver assistance package "Plus"
- Adaptive Cruise Control (ACC) up to 210 km/h and Front Assist Emergency Braking System (Adaptive Cruise Control (ACC) with Speed Limiter - Front Assist Emergency Braking System (for Adaptive Cruise Control (ACC) up to 210 km/h))
- Paint finish: metallic
- Steering wheel: Multifunction steering wheel in leather (with controls for multifunction display, radio and telephone - gear lever knob in leather)
- Package: Mirror package in conjunction with Active Lighting System (electrically folding exterior mirrors, driver's side dimming, ambient lighting and passenger side mirror lowering - automatic headlight control with daytime running lights, "leaving home" function and manual "coming home" function - automatically dimming interior mirror - rain sensor)

Brief expert findings

Documents submitted	At the time of the inspection, the registration certificate Part 2 (letter) was available, but the registration certificate Part 1 (certificate) was not. (Copy)
VIN comparison	The vehicle identification number (VIN) was read from the vehicle and its conformity with the submitted documents was verified during the inspection by the undersigned.
Inspection	The inspection conditions were sufficient for the assessment of the vehicle. Lifting equipment and a pit were available for examining the vehicle.
Test drive	A short maneuvering and shunting trip was carried out on the company premises.
Engine function test	An engine test run was performed.

Value reducing factors

No.	Component group	Description
1	Equipment	Tirefit filler - Due - Replace
2	Side panel - rear left side	Sill - dent(s) - Smooth repair work
3	Door - front left side	Door - Scratch(es) - Smart repair
4	Boot lid / rear door	Boot lid (Fremdkörper) - Paint defect - Smart repair
5	Door - rear left side	Door - Dent / paintcoat damage - Smart repair
6	Airbag systems	Airbag system (Mehrkosten können entstehen) - Electrical fault - Diagnosed and repair if necessary
7	Side panel - rear left side	Side panel - Scratch(es) - Paint
8	Bonnet	Bonnet - Stone chips - Paint
9	Rear bumper	Rear bumper - Scratch(es) - Paint



No.	Component group	Description
10	Front bumper	Front bumper - Stone chips - Paint

Wear and tear

No.	Component group	Description
1	Vehicle glazing	Windscreen - Stone chips - No deduction

The vehicle shows signs of wear commensurate with its age and use.

Order/Scope of order

The order was placed to prepare a sales report for the vehicle described. This includes the following:

- Description of core relevant information about the vehicle
- Documentation of equipment features
(*Delivery by third-party service providers*)
- Documentation of damage, defects, missing parts
- Documentation of previous damage, unrepaired previous damage, repainting
- a brief visual or functional inspection of the equipment details if possible.
(*Functional tests of driver assistance systems are not included in the scope of services!*)
- a photo documentation of the vehicle

Basis for the order

This product is based on the Alphabet Fuhrpark GmbH guidelines for vehicle returns and valuations. The expert makes the explicit findings in each individual case objectively within the framework of the specified standards based on his or her own expertise.

The vehicle inspection takes place in a disassembled state.

Damage or defects that can only be detected during disassembly/diagnosis work or through advanced knowledge remain within the scope of the prognosis risk. An extended risk exists for concealed defects caused by fraudulent deception and not identifiable by the expert.

Damage or defects resulting from normal use or wear and tear of the vehicle will be accepted according to the applicable standard.

There was no explicit identification or monetary consideration of the expected features within the product.

Features which in their nature and severity slightly exceed normal use but do not constitute unacceptable damage will be documented and identified under signs of use if necessary.

Damage or defects which, according to the underlying standard, can no longer be attributed to normal use or wear and tear are listed in the product under "Depreciating Factors".

Depending on the product specification, a monetary ID can be provided. If this takes place, the costs can be 100% d or pro rata depending on the vehicle's age and mileage.

Previous damages

Apparently, no repaired previous damage could be found on the vehicle.



Figure 1: Diagonal front (left)



Figure 2: Diagonal front (right)



Figure 3: Diagonal rear (left)



Figure 4: Diagonal rear (right)



Figure 5: Interior - front



Figure 6: Interior - rear



Figure 7: Instrument cluster



Figure 8: Instrument panel



Figure 9: Interior 360° view



Figure 10: Cargo area



Figure 11: VIN



Figure 12: Mounted tyres



Figure 13: Documents



Figure 14: Documents

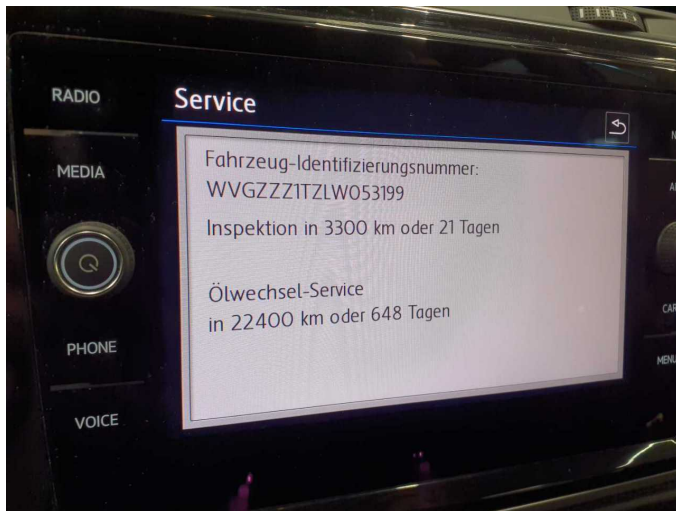


Figure 15: Documents



Figure 16: Documents



Figure 17: Navigation



Figure 18: Misc.



Figure 19: Misc.



Figure 20: Misc.



Figure 21: Misc.



Figure 22: Misc.



Figure 23: Misc.

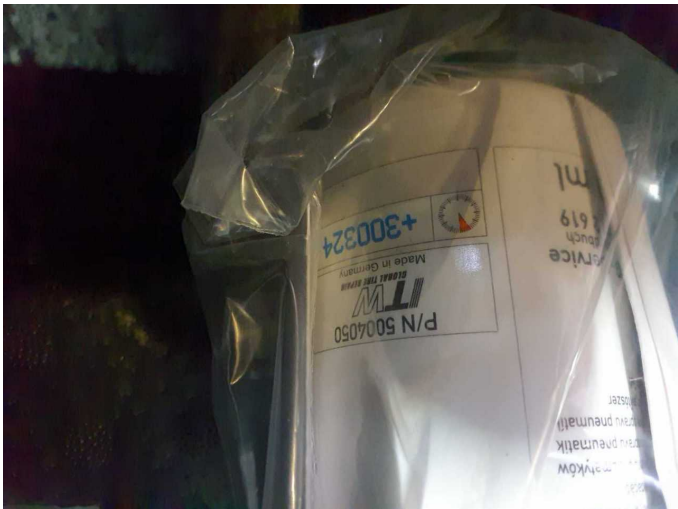


Figure 24: Misc.



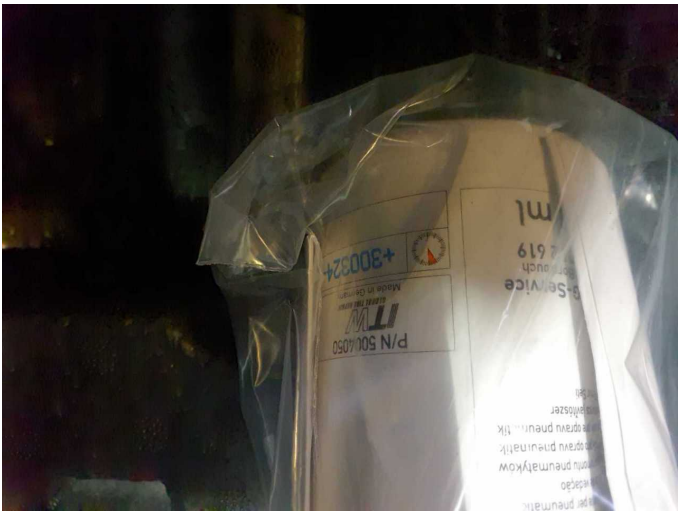
Figure 25: Misc.



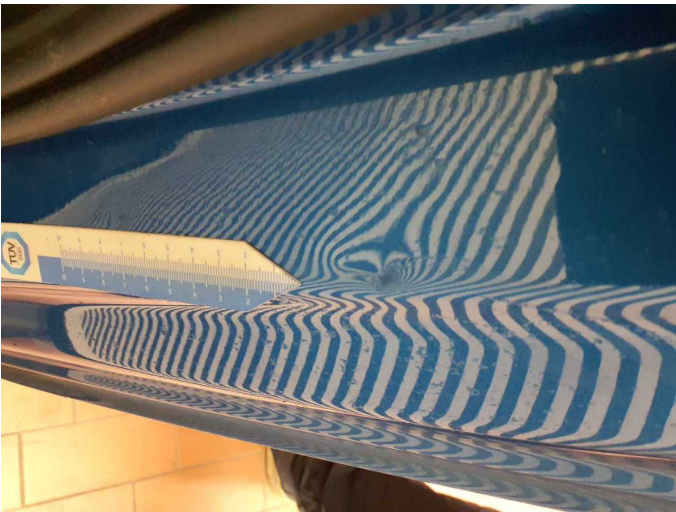
Figure 26: Misc.



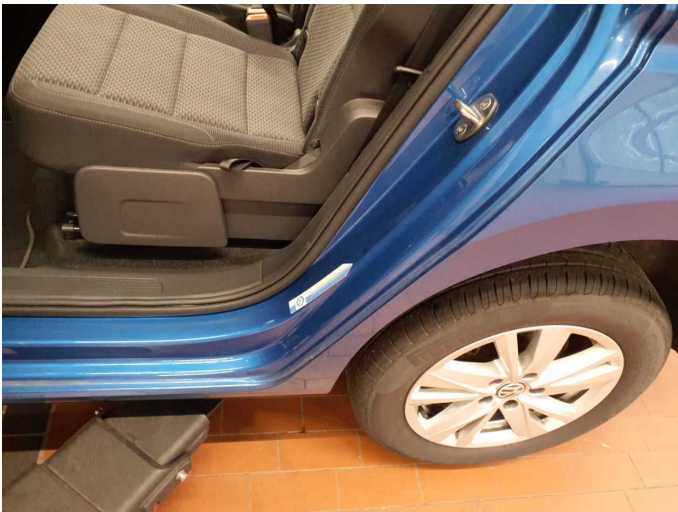
Figure 27: Misc.



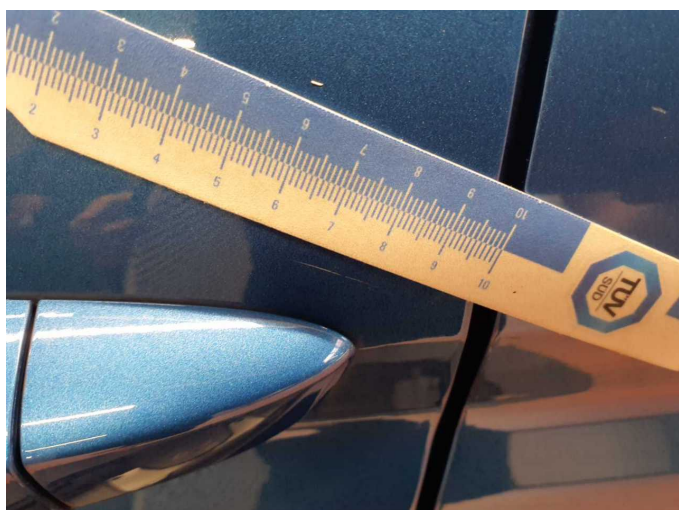
Damage 1: Equipment: Tirefit filler - Due - Replace



Damage 2: Side panel - rear left side: Sill - dent(s) - Smooth repair work



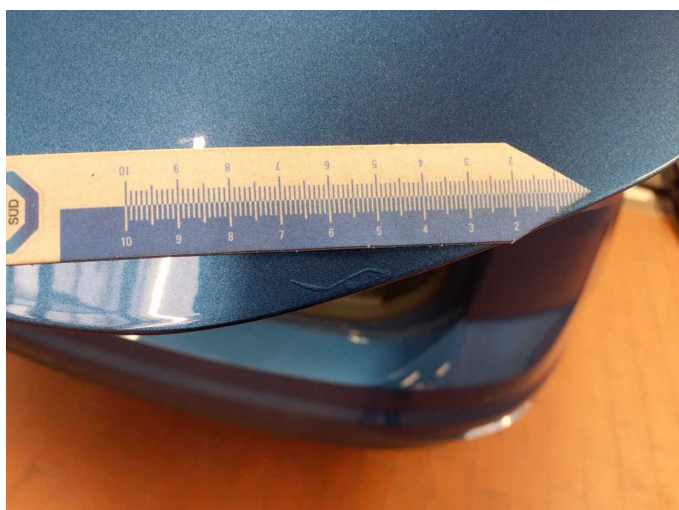
Damage 2: Side panel - rear left side: Sill - dent(s) - Smooth repair work



Damage 3: Door - front left side: Door - Scratch(es) - Smart repair



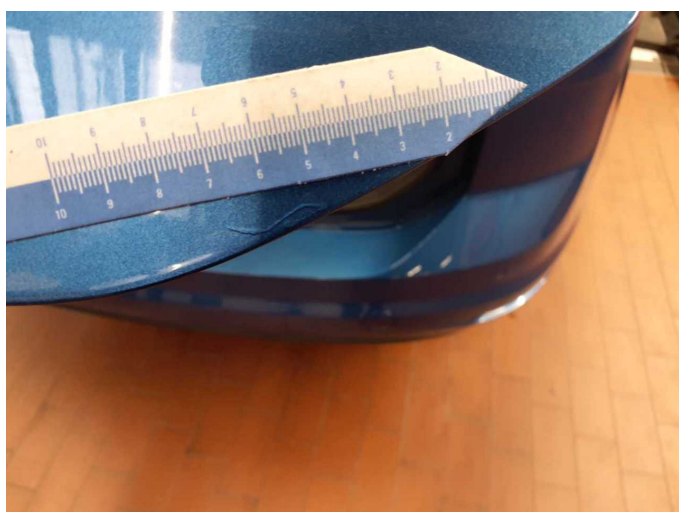
Damage 3: Door - front left side: Door - Scratch(es) - Smart repair



Damage 4: Boot lid / rear door: Boot lid (Fremdkörper) - Paint defect - Smart repair



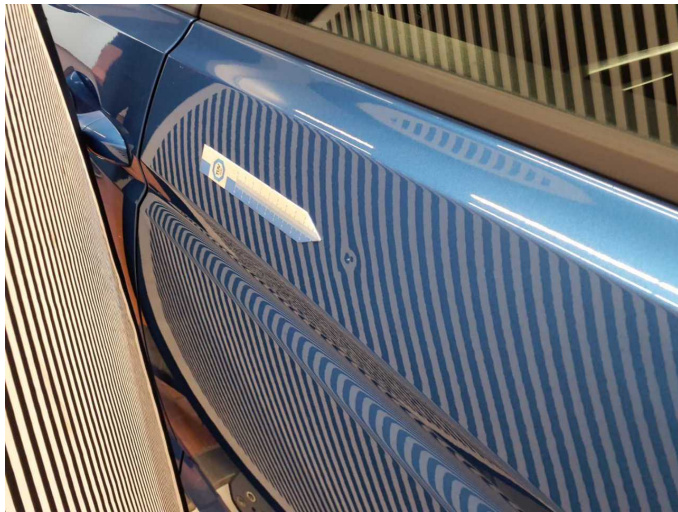
Damage 4: Boot lid / rear door: Boot lid (Fremdkörper) - Paint defect - Smart repair



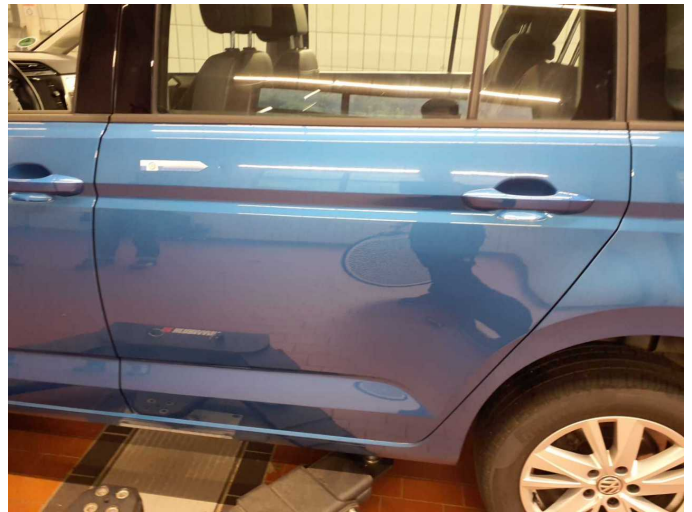
Damage 4: Boot lid / rear door: Boot lid (Fremdkörper) - Paint defect - Smart repair



Damage 5: Door - rear left side: Door - Dent / paintcoat damage - Smart repair



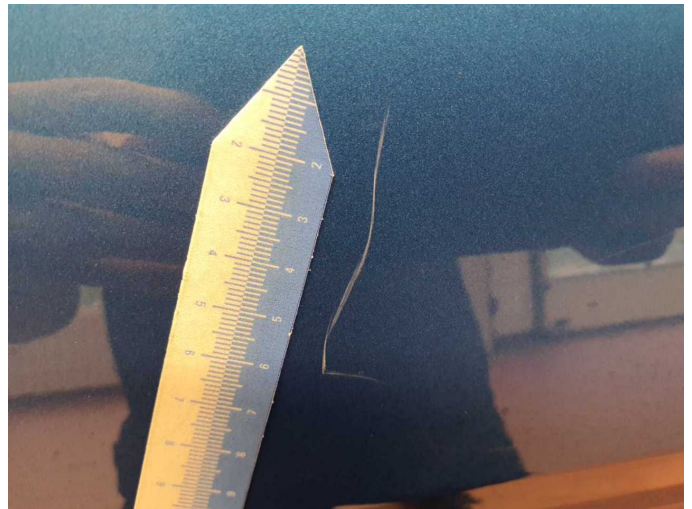
Damage 5: Door - rear left side: Door - Dent / paintcoat damage - Smart repair



Damage 5: Door - rear left side: Door - Dent / paintcoat damage - Smart repair



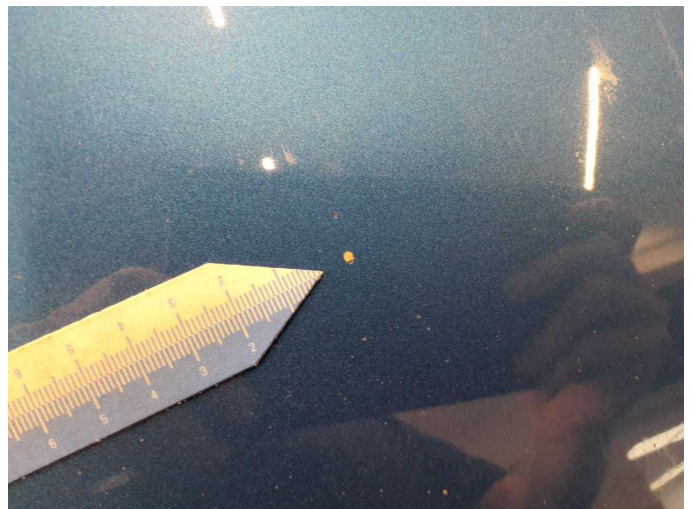
Damage 6: Airbag systems: Airbag system (Mehrkosten können entstehen) - Electrical fault - Diagnosed and repair if necessary



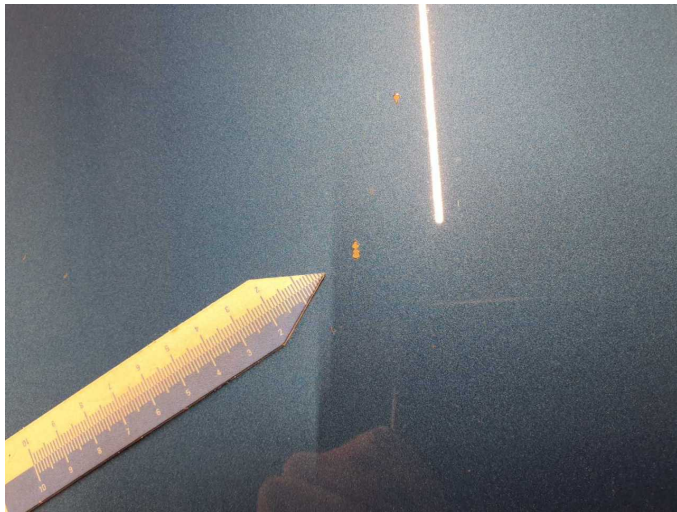
Damage 7: Side panel - rear left side: Side panel - Scratch(es) - Paint



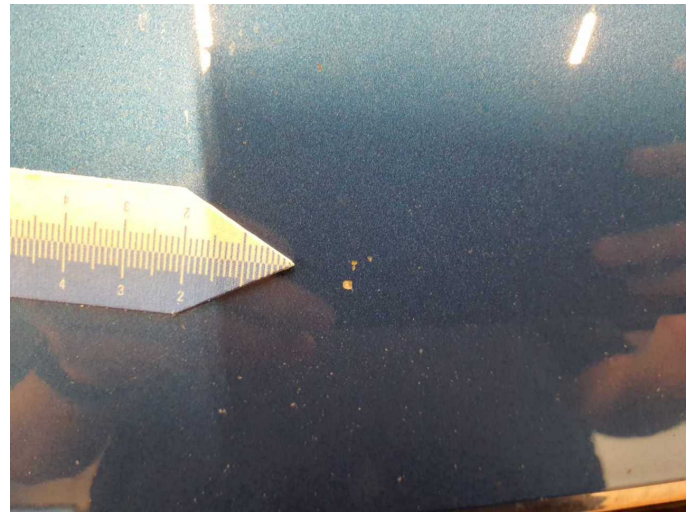
Damage 7: Side panel - rear left side: Side panel - Scratch(es) - Paint



Damage 8: Bonnet: Bonnet - Stone chips - Paint



Damage 8: Bonnet: Bonnet - Stone chips - Paint



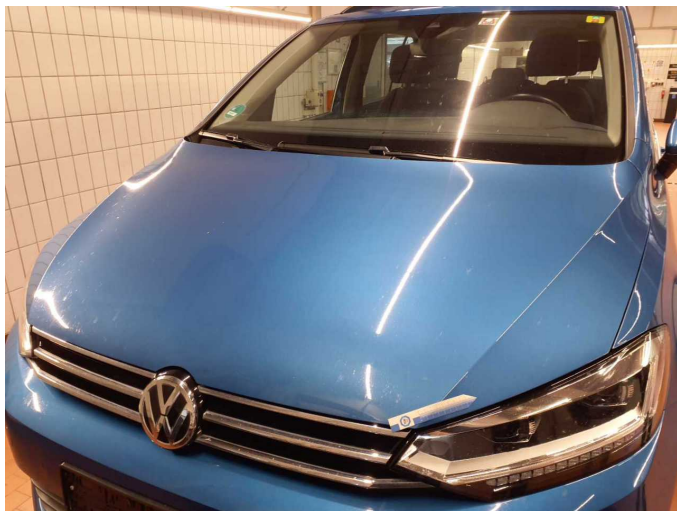
Damage 8: Bonnet: Bonnet - Stone chips - Paint



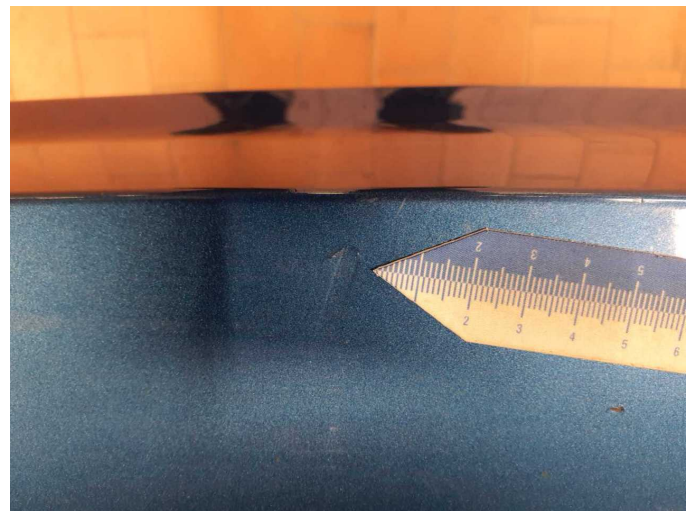
Damage 8: Bonnet: Bonnet - Stone chips - Paint



Damage 8: Bonnet: Bonnet - Stone chips - Paint



Damage 8: Bonnet: Bonnet - Stone chips - Paint



Damage 9: Rear bumper: Rear bumper - Scratch(es) - Paint



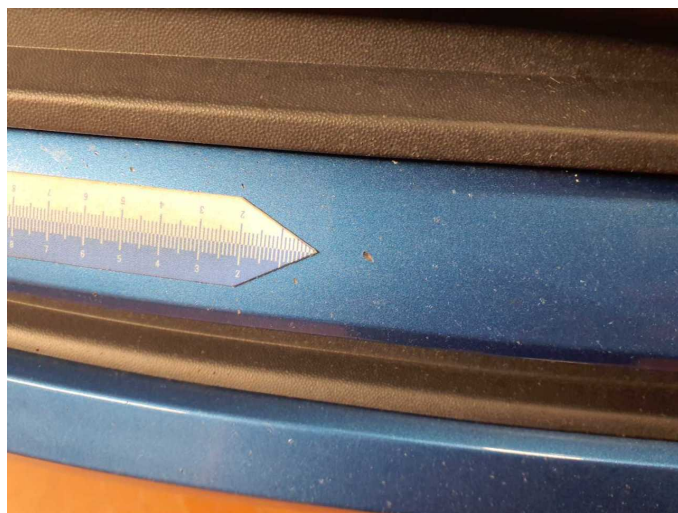
Damage 9: Rear bumper: Rear bumper - Scratch(es) - Paint



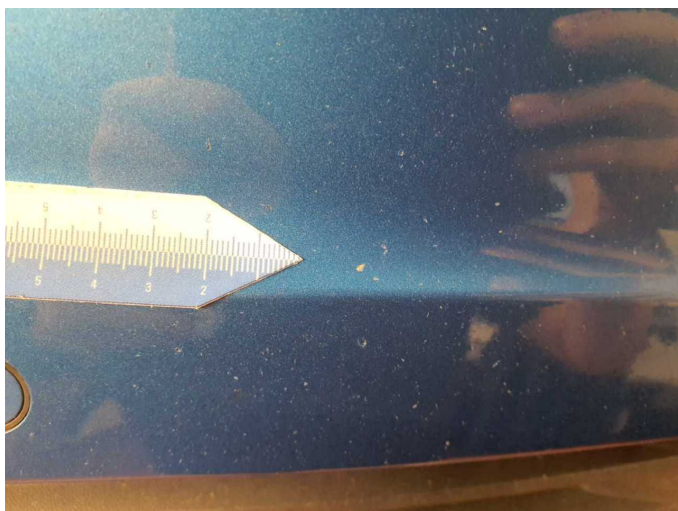
Damage 9: Rear bumper: Rear bumper - Scratch(es) - Paint



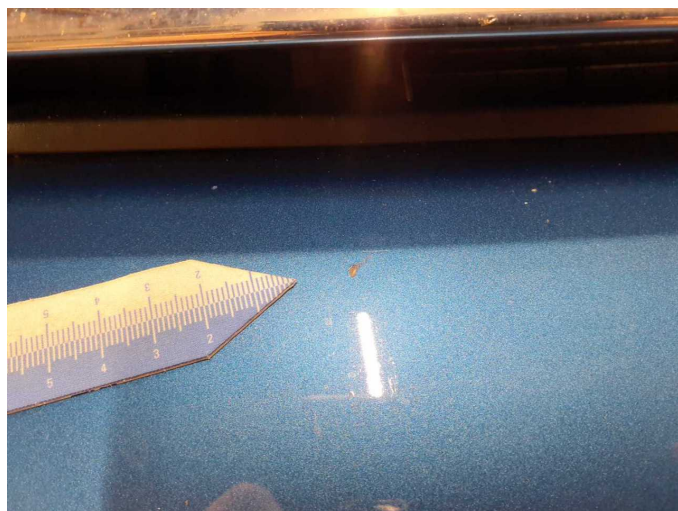
Damage 9: Rear bumper: Rear bumper - Scratch(es) - Paint



Damage 10: Front bumper: Front bumper - Stone chips - Paint



Damage 10: Front bumper: Front bumper - Stone chips - Paint



Damage 10: Front bumper: Front bumper - Stone chips - Paint



Damage 10: Front bumper: Front bumper - Stone chips - Paint



Damage 10: Front bumper: Front bumper - Stone chips - Paint



Damage 10: Front bumper: Front bumper - Stone chips - Paint



Wartungshistorie

(gemäß Auftraggeber Informationen)

Fahrgestellnummer: WVGZZZ1TZLW053199

Hersteller / Modell: VOLKSWAGEN VW Touran 2.0 TDI SCR Comfortline

Datum	KM-Stand	Beschreibung
20.06.2025	93.294	Kraftstofffilter ern; Luftfiltereinsatz ern; Motoröl b. Wartung; Ölfilter ern; Ölwechsel; Systemtest/Eigendiagnose; Wartung Sonstiges
01.10.2024	74.167	Regelwartungsdienst; Wartung Sonstiges
02.11.2023	56.917	AU; Bremsflüssigkeit; Bremsflüssigkeit ern; Motoröl b. Wartung; Ölfilter ern; Regelwartungsdienst; Wartung Sonstiges
25.07.2022	26.452	Bremse Sonstiges; Bremsklötze hinten; Bremsklötze vorne; Motoröl b. Wartung; Ölfilter ern; Regelwartungsdienst; Wartung Sonstiges