



VOLKSWAGEN Touran

Touran 1.4 TSI DSG

VIN NO WVGZZZ1TZEW059197
Registration Number TZEW059197



MOT Date	Number of Owners	Number of Keys	Odometer Reading
2026-10-01	3	2	134033 km
Last Service	Last Service Mileage	First Registration Date	Country First Registered
2024-07-17	117776	2014-03-05	Germany

Inspection Report Summary

Customer	BCA Online	Report Number	P20250930110629
Inspection Date / Place	2025-09-30 / BCA Berlin	Cosmetic Grade	4

Vehicle Summary

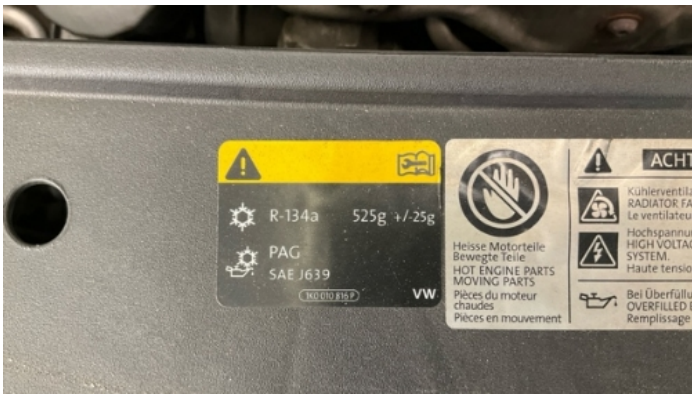
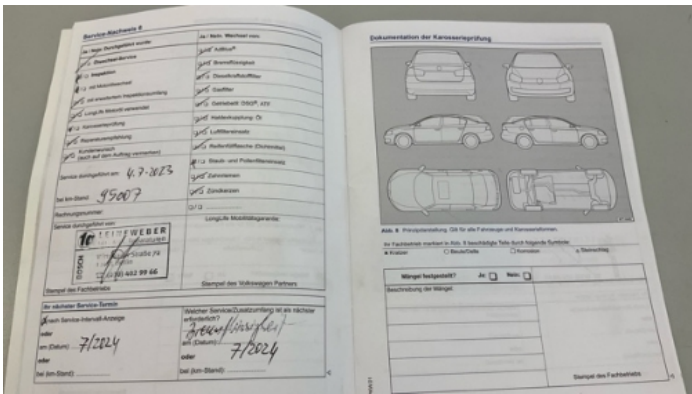
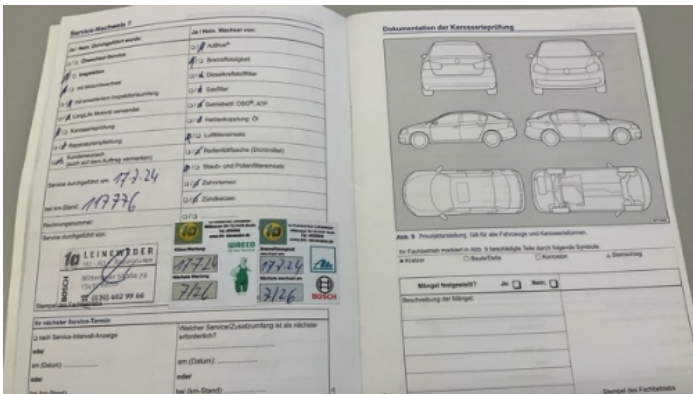
Vehicle Condition	Runner	VAT Type	Margin
Fuel Type	Petrol	Road Worthy	Unknown
Colour	Grey	Engine Size (cc)	1390
Engine Size	1.4	No of Doors	5
Body Type	Stationwagon / Estate	Drive Train	Front
Seat Colour		No of Seats	5
Seat Covering Name		Seat Covering	Cloth
Charging Cables		NEDC CO2 Rating (q/km)	154
Gearbox Type	Automatic		

Vehicle History & Documents

Service Book Available	Present	Next Service Mileage	km
Previous Usage		Imported	No
Manufacturer Warrenty			







Equipment

Tinted Glass	Airbag Status	Anti-lock braking	Cruise control
Front parking sensors	Heated wing mirrors	Remote central locking	Satellite navigation
Sunroof	Rain sensitive windscreen wipers	Trip Computer	Alloys wheels
Bluetooth telephone interface	Digital Radio	Headlamp wash/wipe	Remote adjusting wing mirrors
Roof rails	Stability control	CD Player	Rear parking sensors

Equipment Details

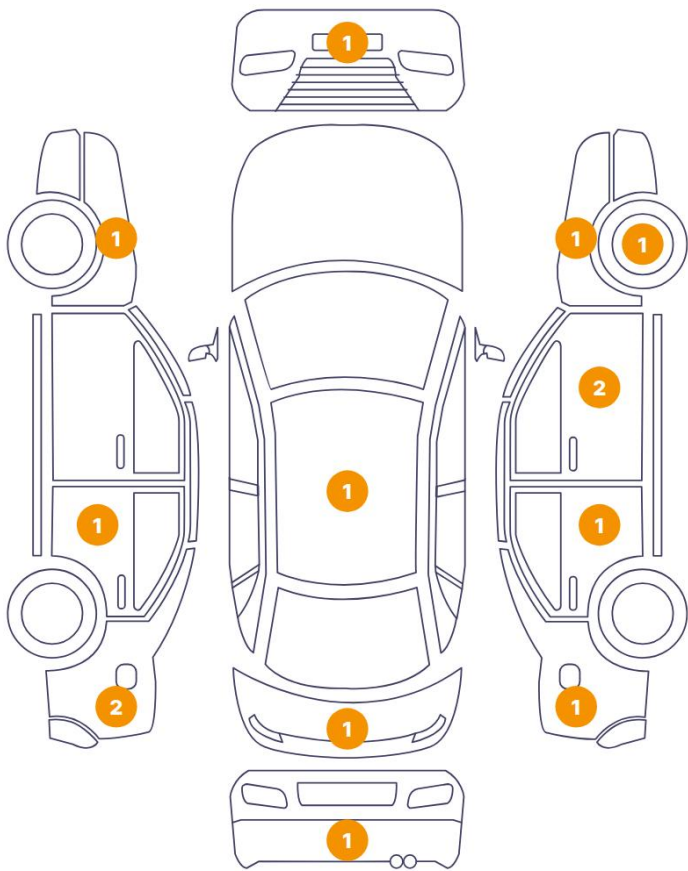
Air Conditioning	Dual Zone Climate Control	Alloy Wheel Size	17
Seat Heating	Front	Sunroof Type	Opening Panoramic

Wheels & Tyres

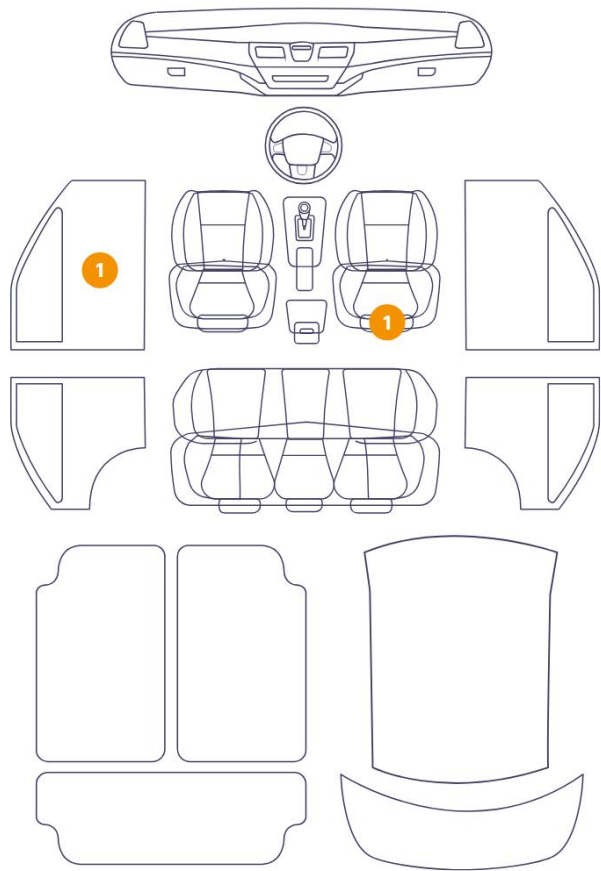
Right Front Tyre Depth	7	Left Front Tyre Depth	7
Right Rear Tyre Depth	6	Left Rear Tyre Depth	6

Cosmetic Damage

14 Schäden

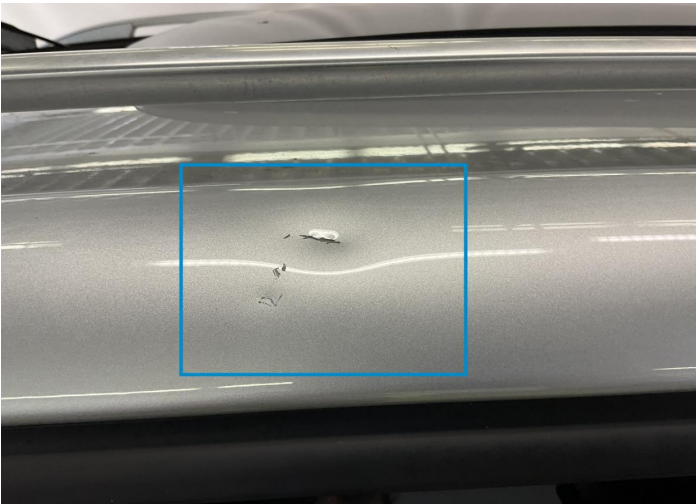


2 Schäden



Component		Damage	Comments
1	Roof	Bodywork / Dent / Dent	
2	Side Panel / Back Right	Paint / Scratch / Scuff	
3	Door / Back Right	Paint / Scratch / Scuff	
4	Door / Front Right	Paint / Scratch / Scuff	
5	Mirror / Front Right	Paint / Scratch / Scuff	
6	Rim / Front Right	Out of Bodywork / Scratch	
7	Fender / Front Right	Bodywork / Dent / Dent	
8	Bumper / Front	Paint / Scratch / Scuff	
9	Fender / Front Left	Paint / Scratch / Scuff	
10	Door / Back Left	Paint / Scratch / Scuff	
11	Side Panel / Back Left	Paint / Scratch / Scuff	
12	Side Panel / Back Left	Paint / Scratch / Scuff	

13	Tailgate light	Paint / Scratch / Scuff
14	Bumper / Back	Paint / Scratch / Scuff
15	Seat / Front Right	Interior / Dirty
16	Panel Filling / Front Left	Interior / Dirty



1. Roof
Bodywork / Dent / Dent -



2. Side Panel / Back Right
Paint / Scratch / Scuff -



3. Door / Back Right
Paint / Scratch / Scuff -



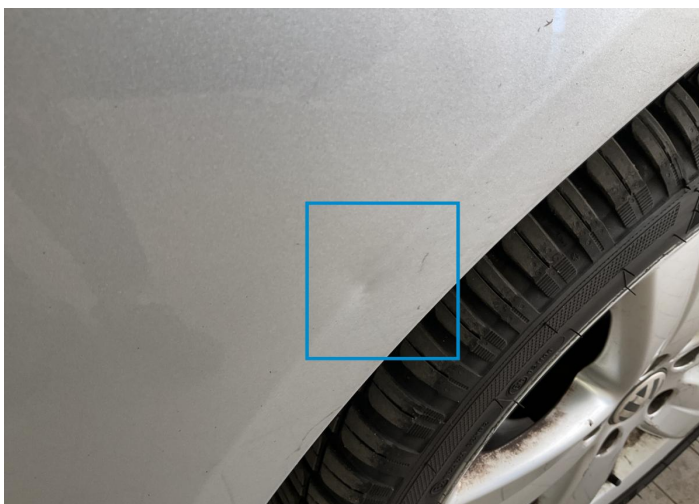
4. Door / Front Right
Paint / Scratch / Scuff -



5. Mirror / Front Right
Paint / Scratch / Scuff -



6. Rim / Front Right
Out of Bodywork / Scratch -



7. Fender / Front Right
Bodywork / Dent / Dent -



8. Bumper / Front
Paint / Scratch / Scuff -



9. Fender / Front Left
Paint / Scratch / Scuff -



10. Door / Back Left
Paint / Scratch / Scuff -



11. Side Panel / Back Left
Paint / Scratch / Scuff -



12. Side Panel / Back Left
Paint / Scratch / Scuff -



13. Tailgate light
Paint / Scratch / Scuff -



14. Bumper / Back
Paint / Scratch / Scuff -



15. Seat / Front Right
Interior / Dirty -



16. Panel Filling / Front Left
Interior / Dirty -

Mechanical Condition

Control Lights

ABS Warning Light	✓	ESP Fault/Traction Control Malfunction Light	✓
Airbag Warning Light	✓	Oil Pressure Warning Light	✓
Brake Warning Light	✓	Power Steering Warning Light	✓
Alternator / Battery	✓	No Dashboard Lights	✓
Display Defect	✓	Service Light	⚠
Tire Pressure Monitoring System	✓		

Engine

Engine Status / EML	✓	Engine Leak Visible	✓
Engine Starts	✓		

Gearbox

Gear Box	✓
----------	---

Levels

Brakes Fluid	✓	Coolant Fluid	✓
--------------	---	---------------	---

Equipments Test

Main & Spare Keys Functioning	✓	Electric Windows	✓
Navigation System	✓	Audio Equipment	✓
Parking Sensors / Cameras Functioning	✓	AC / Heating System	✓
Other Equipments	✓		

Test Drive Inspection

Steering Wheel			
Steering Noise / Anomaly		✓	
Engine			
Engine Noise	✓	The Gears Scratch / Skip / Abnormal Operation	✓
Fume Quantity	✓	Power Loss	✓
Brake			
Brake System Anomaly		✓	
General			
Test Driven Status		✓	
✓ <i>No troubles detected, good condition or correct tests, according to vehicle age and mileage</i>			
! <i>Damages or malfunction detected that requires repairs by the buyer</i>			
NA <i>Not applicable</i>			
= <i>Not tested</i>			

Disclaimer

Please also note the "UserGuide condition report", which shows the scope of the vehicle description.

[User Guide](#)