



VOLKSWAGEN Touran
Touran 1.6 FSI

VIN NO WVGZZZ1TZ4W125811

Registration Number TZ4W125811



MOT Date

2025-02-01

Last Service



Number of Owners

4

Last Service Mileage



Number of Keys

1

First Registration Date

2004-02-24

Odometer Reading

213279 km

Country First Registered

Germany

Inspection Report Summary

Customer	BCA Online	Report Number	P20251001122929
Inspection Date / Place	2025-10-01 / BCA Berlin	Cosmetic Grade	4

Vehicle Summary

Vehicle Condition	Runner	VAT Type	Margin
Fuel Type	Petrol	Road Worthy	Unknown
Colour	Grey	Engine Size (cc)	1598
Engine Size	1.6	No of Doors	5
Body Type	Stationwagon / Estate	Drive Train	Front
Seat Colour		No of Seats	5
Seat Covering Name	Grau	Seat Covering	Cloth
Charging Cables		NEDC CO2 Rating (q/km)	185
Gearbox Type	Manual		

Vehicle History & Documents

Service Book Available	Missing	Next Service Mileage	km
Previous Usage		Imported	No
Manufacturer Warrenty			







Equipment

Tinted Glass	Alloys wheels	Cruise control	Heated wing mirrors
Remote central locking	Satellite navigation	CD Player	Airbag Status
Anti-lock braking	Front fog lamps	Remote adjusting wing mirrors	Roof rails
Stability control	Radio		

Equipment Details

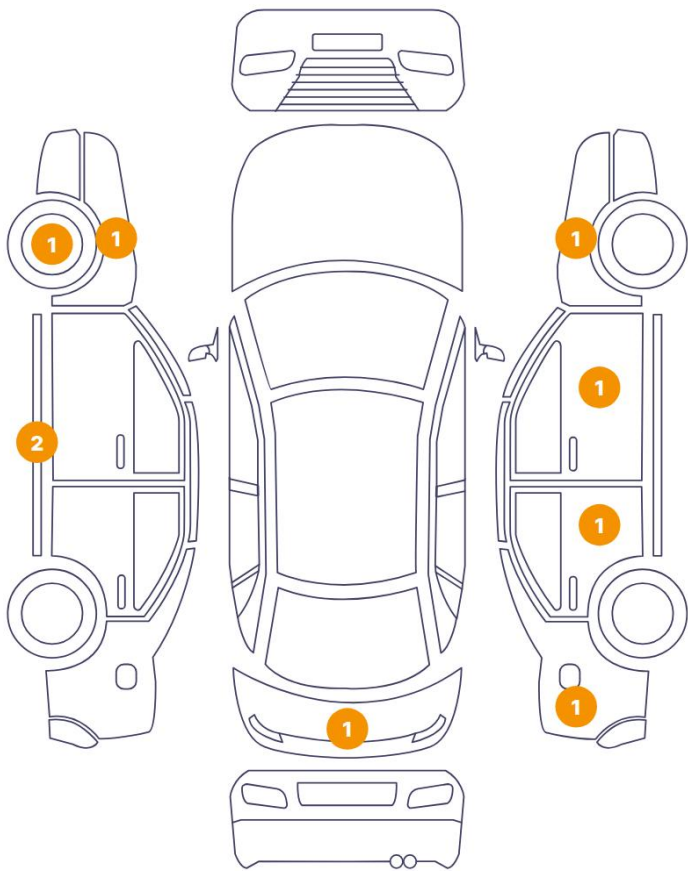
Air Conditioning	Dual Zone Climate Control	Alloy Wheel Size	16
Seat Heating	Front		

Wheels & Tyres

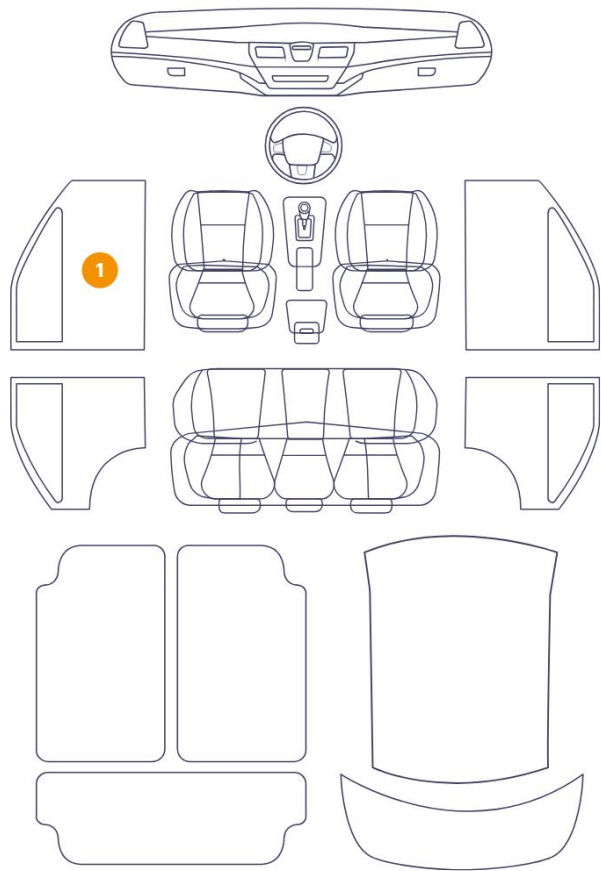
Right Front Tyre Depth	3	Left Front Tyre Depth	3
Right Rear Tyre Depth	4	Left Rear Tyre Depth	3

Cosmetic Damage

9 Schäden



1 Schäden



Component		Damage	Comments
1	Panel Filling / Front Left	Interior / Dirty	
2	Fender / Front Right	Paint / Corrosion	
3	Door / Front Right	Paint / Corrosion	
4	Door / Back Right	Paint / Corrosion	
5	Rim / Front Left	Out of Bodywork / Scratch	
6	Rocker Panel / Center Left	Paint / Corrosion	
7	Fender / Front Left	Paint / Corrosion	
8	Rocker Panel / Center Left	Paint / Corrosion	
9	Tailgate	Paint / Corrosion	
10	Side Panel / Back Right	Paint / Scratch / Scuff	



1. Panel Filling / Front Left
Interior / Dirty -



2. Fender / Front Right
Paint / Corrosion -



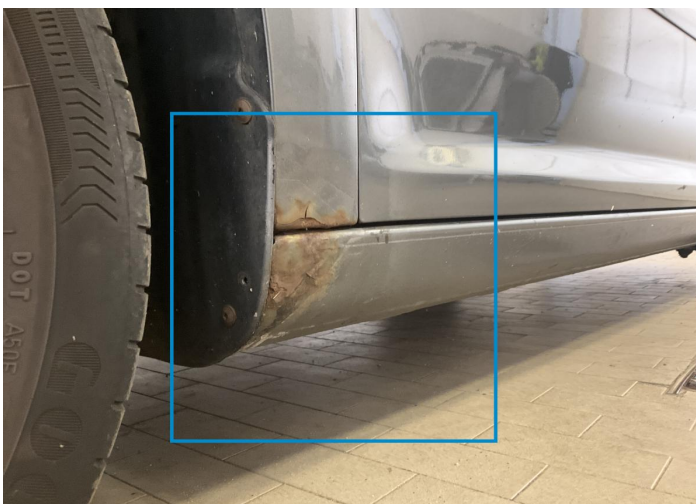
3. Door / Front Right
Paint / Corrosion -



4. Door / Back Right
Paint / Corrosion -



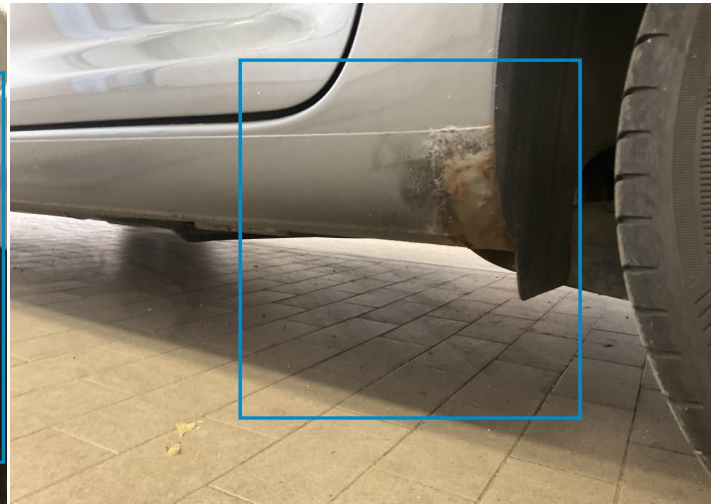
5. Rim / Front Left
Out of Bodywork / Scratch -



6. Rocker Panel / Center Left
Paint / Corrosion -



7. Fender / Front Left
Paint / Corrosion -



8. Rocker Panel / Center Left
Paint / Corrosion -



9. Tailgate
Paint / Corrosion -



10. Side Panel / Back Right
Paint / Scratch / Scuff -

Mechanical Condition

Control Lights

ABS Warning Light	✓	ESP Fault/Traction Control Malfunction Light	✓
Airbag Warning Light	✓	Oil Pressure Warning Light	✓
Brake Warning Light	✓	Power Steering Warning Light	✓
Alternator / Battery	✓	No Dashboard Lights	⚠
Display Defect	✓		

Engine

Engine Status / EML	⚠	Engine Leak Visible	✓
Engine Starts	✓		

Levels

Brakes Fluid	✓	Coolant Fluid	✓
--------------	---	---------------	---

Equipments Test





Main & Spare Keys Functioning	⚠	Electric Windows	✓
Navigation System	✓	Audio Equipment	✓
AC / Heating System	✓	Other Equipments	✓

Test Drive Inspection

Steering Wheel

Steering | Noise / Anomaly 


Engine

Engine Noise		The Gears Scratch / Skip / Abnormal Operation	
Fume Quantity		Power Loss	


Brake





Brake System Anomaly 

Clutch

Clutch Functioning 

General

Test Driven Status 

-  **No troubles detected, good condition or correct tests, according to vehicle age and mileage**
-  **Damages or malfunction detected that requires repairs by the buyer**
-  **Not applicable**
-  **Not tested**

Disclaimer

Please also note the "UserGuide condition report", which shows the scope of the vehicle description. [User Guide](#)