



VOLKSWAGEN Touareg

Touareg 3.6 V6 FSI Automatik

VIN NO WVGEF9BP6GD004684
Registration Number P6GD004684



MOT Date



Last Service



Number of Owners



Last Service Mileage



Number of Keys



First Registration Date



Odometer Reading



Country First Registered



Inspection Report Summary

Customer	BCA Online	Report Number	P20250408100936
Inspection Date / Place	2025-04-08 / Dürkop Goslar	Cosmetic Grade	2

Vehicle Summary

Vehicle Condition	Runner	VAT Type	Margin
Fuel Type	Petrol	Road Worthy	Yes
Colour	Blue	Engine Size (cc)	3597
Engine Size	3.6	No of Doors	5
Body Type	SUV	Drive Train	All-Wheel-Drive permanent
Seat Colour		No of Seats	5
Seat Covering Name	Beige	Seat Covering	Leather
Charging Cables		NEDC CO2 Rating (q/km)	331
Gearbox Type	Automatic		

Vehicle History & Documents

Service Book Available	Missing	Next Service Mileage	km
Previous Usage		Imported	No
Manufacturer Warrenty			







Equipment

Tinted Glass	Alloys wheels	Blindspotassist	Cruise control
Front parking sensors	Heated wing mirrors	Remote central locking	Roof rails
Seatventilation	Stability control	Xenon headlamps	Electrically adjustable seats
Electrictailgate	Radio	Airbag Status	Anti-lock braking
Bluetooth telephone interface	Front fog lamps	Headlamp wash/wipe	Remote adjusting wing mirrors
Reversing Camera	Satellite navigation	Split folding rear seats	Sunroof
Central locking	Electrically folding wing mirrors	Leather steering wheel	Rear parking sensors

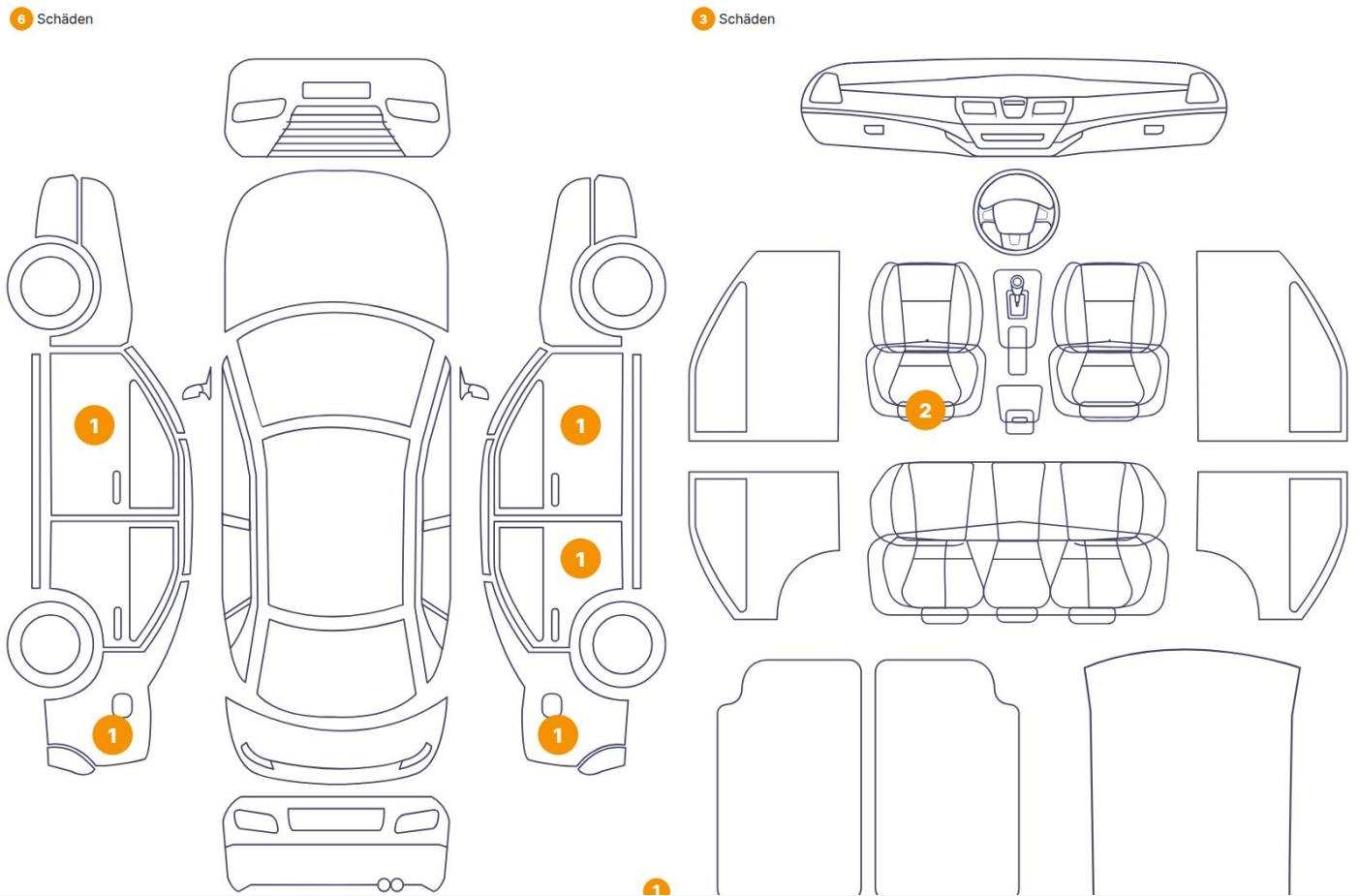
Equipment Details

Air Conditioning	Dual Zone Climate Control	Alloy Wheel Size	19
Seat Heating	Front	Sunroof Type	Opening Panoramic

Wheels & Tyres

Right Front Tyre Depth	7	Left Front Tyre Depth	7
Right Rear Tyre Depth	7	Left Rear Tyre Depth	7

Cosmetic Damage



Component		Damage	Comments
1	Other	Anomalyon Element	
2	Seat / Front Left	Interior / Scratched	
3	Seat / Front Left	Interior / Scraped	
4	Other	Interior / Loose	
5	Door / Front Left	Bodywork / Dent / Dent	
6	Side Panel / Back Left	Bodywork / Dent / Dent	
7	Side Panel / Back Right	Paint / Scratch / Line	
8	Door / Back Right	Paint / Scratch / Scuff	
9	Door / Front Right	Bodywork / Dent / Dent	



1.
Anomaly Element -



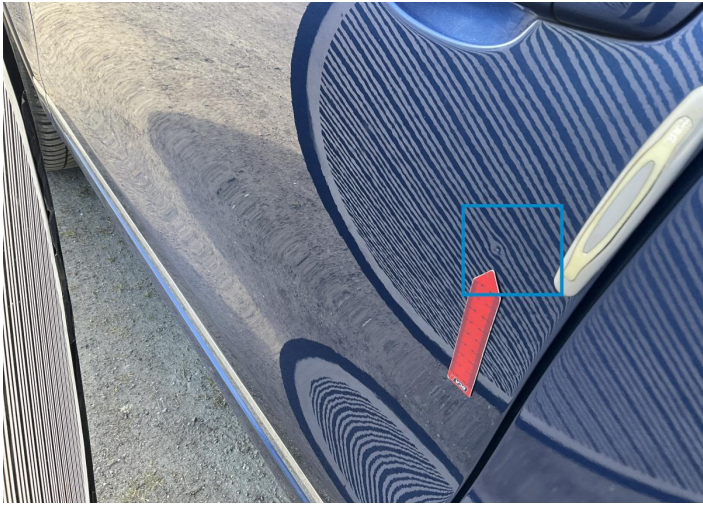
2. Seat / Front Left
Interior / Scratched -



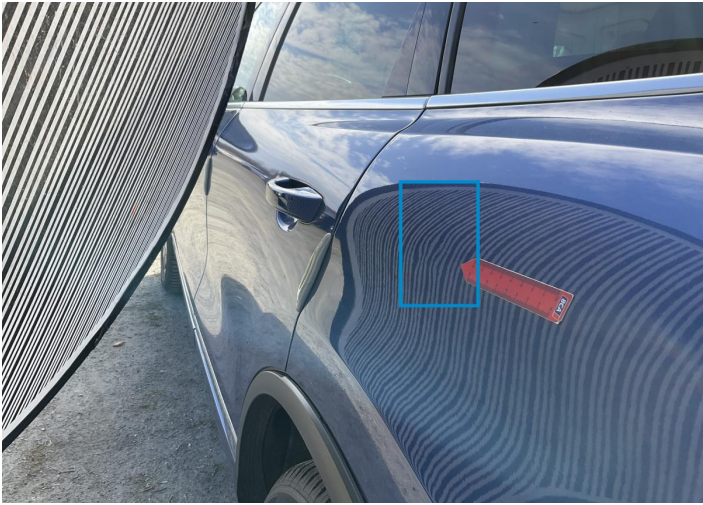
3. Seat / Front Left
Interior / Scraped -



4.
Interior / Loose -



5. Door / Front Left
Bodywork / Dent / Dent -



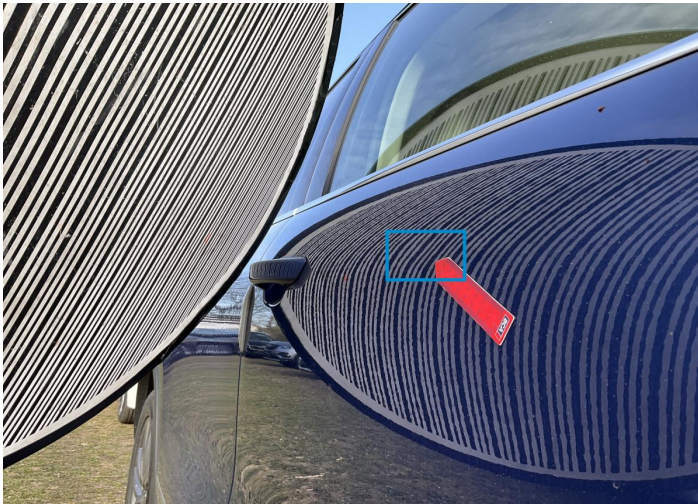
6. Side Panel / Back Left
Bodywork / Dent / Dent -



7. Side Panel / Back Right
Paint / Scratch / Line -



8. Door / Back Right
Paint / Scratch / Scuff -



9. Door / Front Right
Bodywork / Dent / Dent -

Mechanical Condition

Control Lights

Display Defect	✓	Service Light	✓
ABS Warning Light	✓	ESP Fault/Traction Control Malfunction Light	✓
Airbag Warning Light	✓	Oil Pressure Warning Light	✓
Brake Warning Light	✓	Power Steering Warning Light	✓
Alternator / Battery	✓	All - wheel Drive	✓
No Dashboard Lights	✓	Tire Pressure Monitoring System	✓

Equipments Test

Central Locking	✓	Main & Spare Keys Functioning	✓
Electric Windows	✓	Navigation System	✓
Audio Equipment	✓	Parking Sensors / Cameras Functioning	✓
AC / Heating System	✓	Other Equipments	✓

Engine

Engine Status / EML	✓	Engine Leak Visible	⚠
Engine Starts	✓		

Gearbox

Gear Box	✓
----------	---

Levels

Brakes Fluid	✓	Coolant Fluid	✓
--------------	---	---------------	---

Test Drive Inspection

Steering Wheel			
Steering Noise / Anomaly		✓	
Engine			
Engine Noise	✓	The Gears Scratch / Skip / Abnormal Operation	✓
Fume Quantity	✓	Power Loss	✓
Brake			
Brake System Anomaly		✓	
General			
Test Driven Status		✓	
✓ <i>No troubles detected, good condition or correct tests, according to vehicle age and mileage</i>			
! <i>Damages or malfunction detected that requires repairs by the buyer</i>			
NA <i>Not applicable</i>			
= <i>Not tested</i>			

Disclaimer

Please also note the "UserGuide condition report", which shows the scope of the vehicle description.

[User Guide](#)