



VOLKSWAGEN Tiguan

Tiguan 1.4 TSI 4Motion

VIN NO WVGBV3AX7DW581941

Registration Number X7DW581941



MOT Date



Last Service



Number of Owners



Last Service Mileage



Number of Keys



First Registration Date



Odometer Reading



Country First Registered



Inspection Report Summary

Customer	BCA Online	Report Number	P20250911090834
Inspection Date / Place	2025-09-11 / BCA Neuss	Cosmetic Grade	9

Vehicle Summary

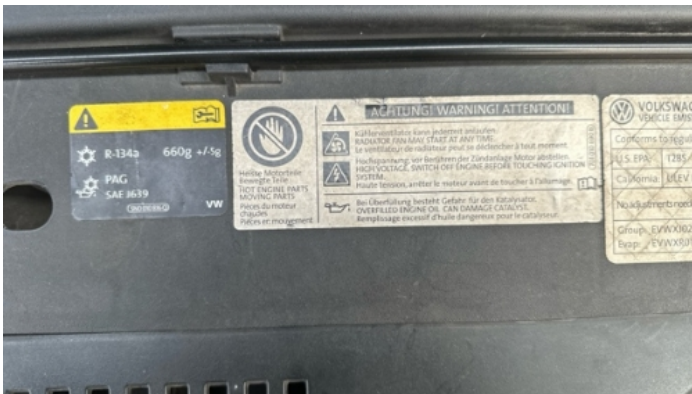
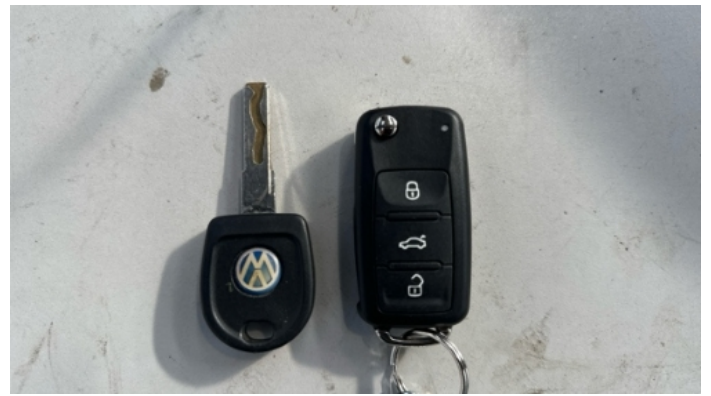
Vehicle Condition	Runner	VAT Type	Margin
Fuel Type	Petrol	Road Worthy	Yes
Colour	Black	Engine Size (cc)	1390
Engine Size	1.4	No of Doors	5
Body Type	SUV	Drive Train	All-Wheel-Drive permanent
Seat Colour		No of Seats	5
Seat Covering Name	Beige	Seat Covering	Synthetic Leather
Charging Cables		NEDC CO2 Rating (q/km)	178
Gearbox Type	Automatic		

Vehicle History & Documents

Service Book Available	Missing	Next Service Mileage	km
Previous Usage		Imported	No
Manufacturer Warranty			







Equipment

Airbag Status	Anti-lock braking	Heated wing mirrors	Remote central locking
Stability control	Rear parking sensors	Alloys wheels	Cruise control
Remote adjusting wing mirrors	Roof rails	Leather steering wheel	

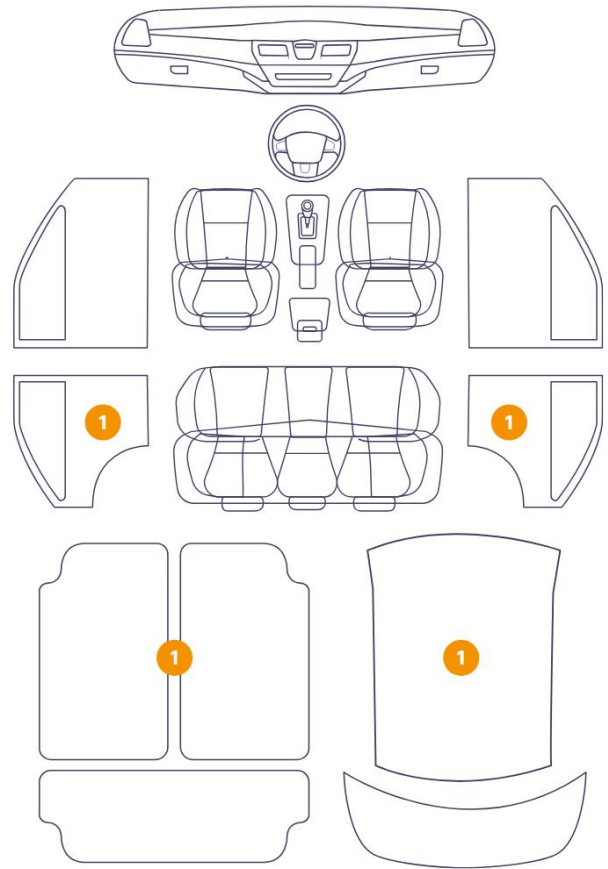
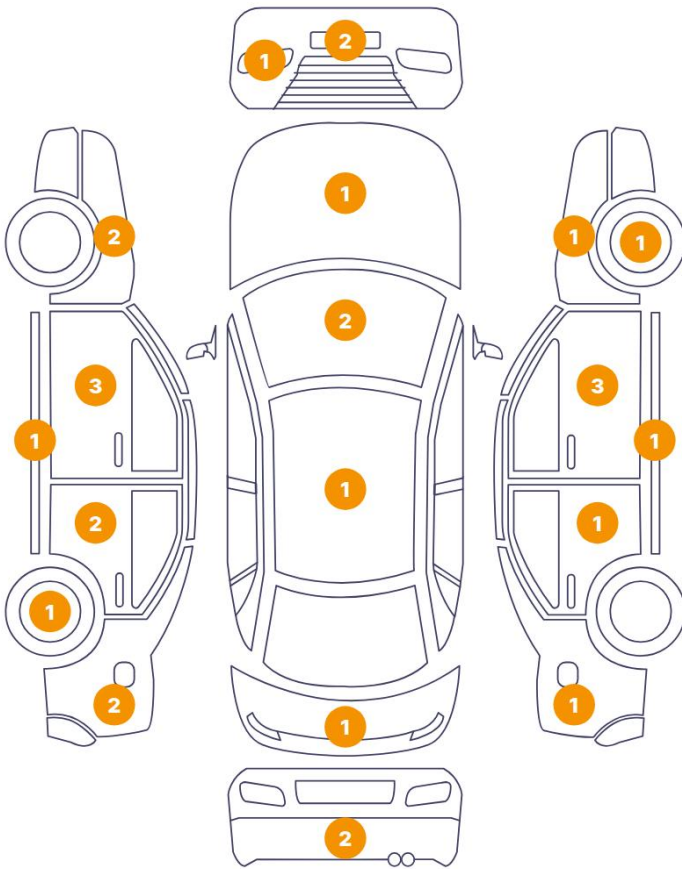
Equipment Details

Air Conditioning	Yes	Alloy Wheel Size	18
Extra Wheel / Tyre Set	Winter Tyres	Seat Heating	Front

Cosmetic Damage

29 Schäden

4 Schäden



Component	Damage	Comments
1 Hood	Paint / Poor Previous Repair	
2 Wing Repeater / Left	Paint / Poor Previous Repair	
3 Door / Front Left	Paint / Poor Previous Repair	
4 Door / Back Left	Paint / Poor Previous Repair	
5 Fender / Back Left	Paint / Poor Previous Repair	
6 Fender / Front Right	Paint / Poor Previous Repair	
7 Door / Front Right	Paint / Poor Previous Repair	
8 Rim / Front Right	Out of Bodywork / Scratch	
9 Bumper / Front	Paint / Poor Previous Repair	
10 Corner Bumper / Front Left	Bodywork / Breakage / Crack	
11 Front Light / Front Left	Glass Break	
12 Windshield / Front	Glass Break / Impact	

13	Windshield Joint / Front	Paint / Chemical Damage
14	Roof	Paint / Corrosion
15	Wing Stick / Front Left	Bodywork / Breakage / Crack
16	Door / Front Left	Paint / Scratch / Scuff
17	Door / Front Left	Bodywork / Dent / Dent
18	Rocker Panel / Center Left	Bodywork / Dent / Dent
19	Door / Back Left	Bodywork / Dent / Dent
20	Panel Filling / Back Left	Interior / Broken
21	Rim / Back Left	Out of Bodywork / Scratch
22	Side Panel / Back Left	Paint / Scratch / Scuff
23	Tailgate	Bodywork / Dent / Dent
24	Floor Carpet	Interior / Holed
25	Bumper / Back	Paint / Scratch / Scuff
26	Corner Bumper / Back Right	Bodywork / Breakage / Crack
27	Fender / Back Right	Bodywork / Dent / Dent
28	Door / Back Right	Bodywork / Dent / Dent
29	Panel Filling / Back Right	Interior / Broken
30	Door / Front Right	Bodywork / Dent / Dent
31	Mirror Repeater / Right	Paint / Scratch / Scuff
32	Rocker Panel / Center Right	Bodywork / Dent / Dent
33	Roof Upholstery	Interior / Broken



1. Hood
Paint / Poor Previous Repair -



2. Wing Repeater / Left
Paint / Poor Previous Repair -



3. Door / Front Left
Paint / Poor Previous Repair -



4. Door / Back Left
Paint / Poor Previous Repair -



5. Fender / Back Left
Paint / Poor Previous Repair -



6. Fender / Front Right
Paint / Poor Previous Repair -



7. Door / Front Right
Paint / Poor Previous Repair -



8. Rim / Front Right
Out of Bodywork / Scratch -



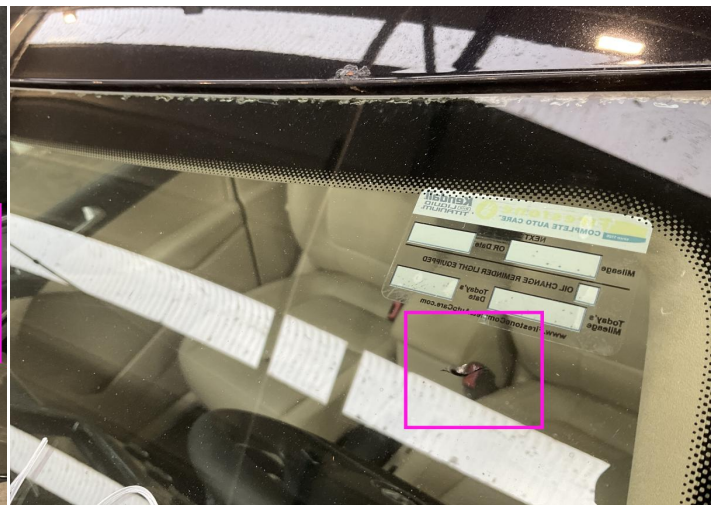
9. Bumper / Front
Paint / Poor Previous Repair -



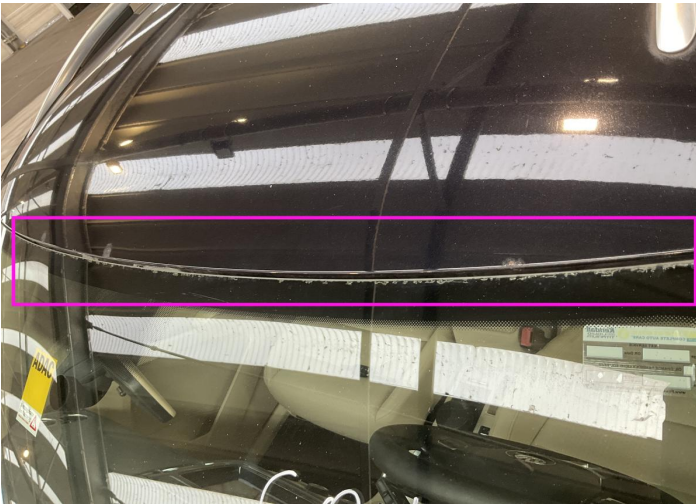
10. Corner Bumper / Front Left
Bodywork / Breakage / Crack -



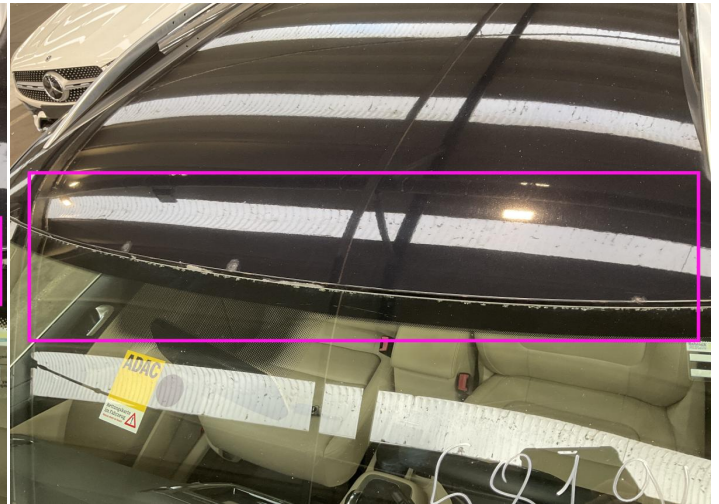
11. Front Light / Front Left
Glass Break -



12. Windshield / Front
Glass Break / Impact -



13. Windshield Joint / Front Paint / Chemical Damage -



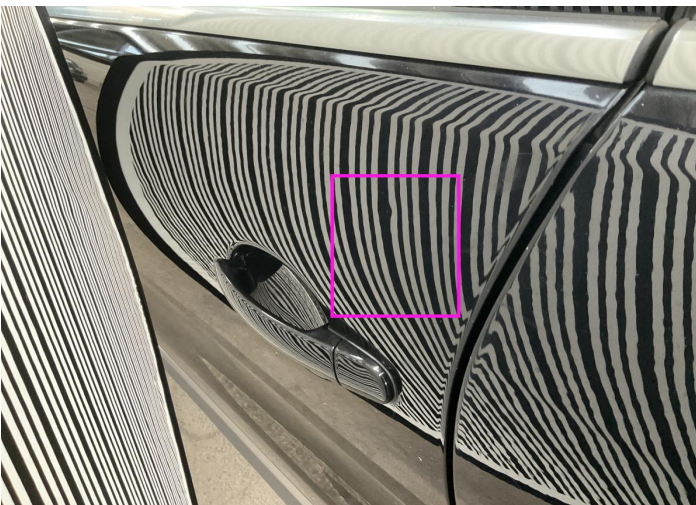
14. Roof Paint / Corrosion -



15. Wing Stick / Front Left Bodywork / Breakage / Crack -



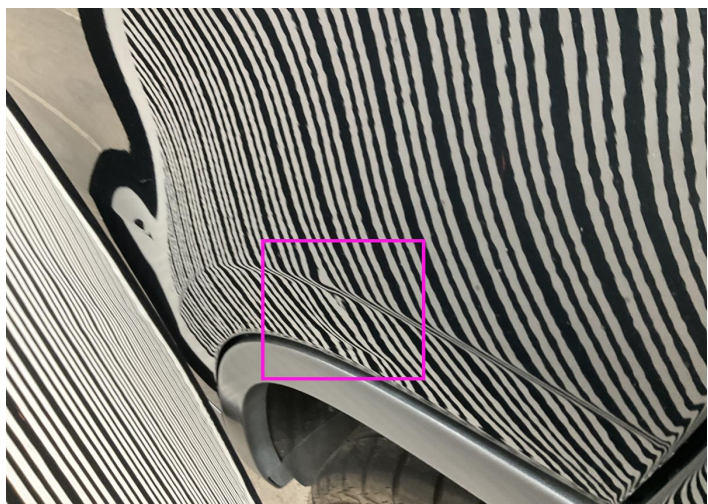
16. Door / Front Left Paint / Scratch / Scuff -



17. Door / Front Left Bodywork / Dent / Dent -



18. Rocker Panel / Center Left Bodywork / Dent / Dent -



19. Door / Back Left
Bodywork / Dent / Dent -



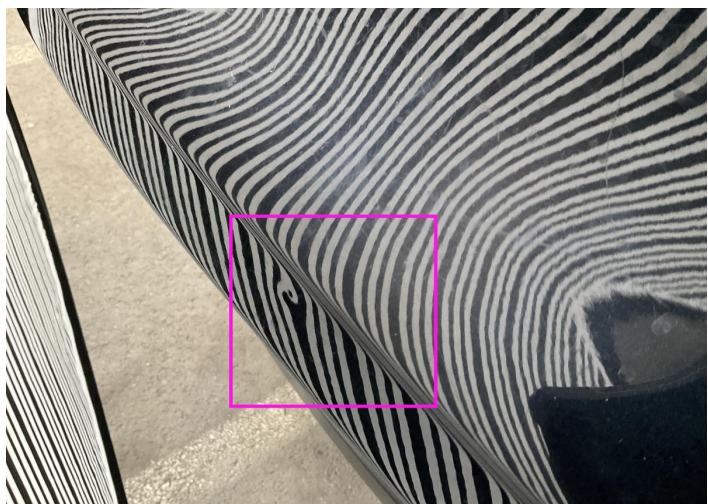
20. Panel Filling / Back Left
Interior / Broken -



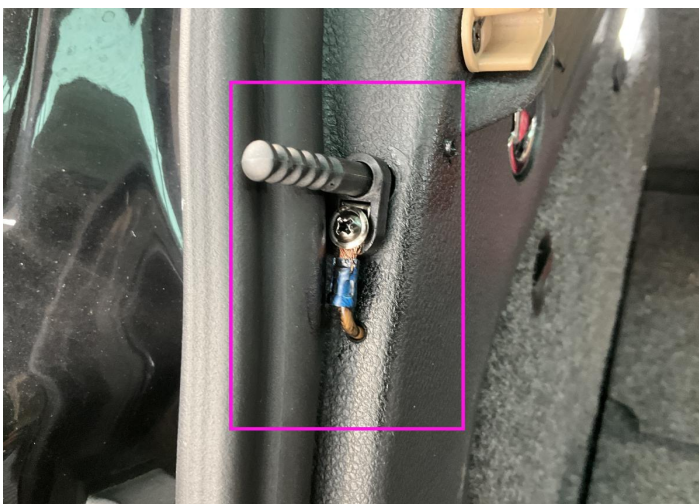
21. Rim / Back Left
Out of Bodywork / Scratch -



22. Side Panel / Back Left
Paint / Scratch / Scuff -



23. Tailgate
Bodywork / Dent / Dent -



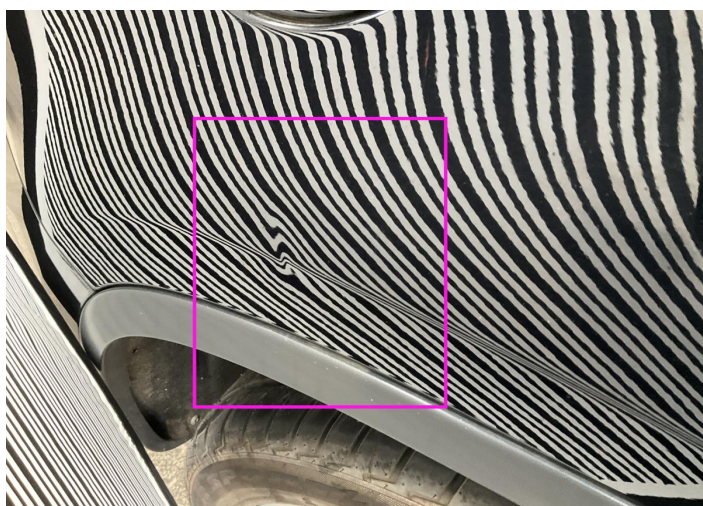
24. Floor Carpet
Interior / Holed -



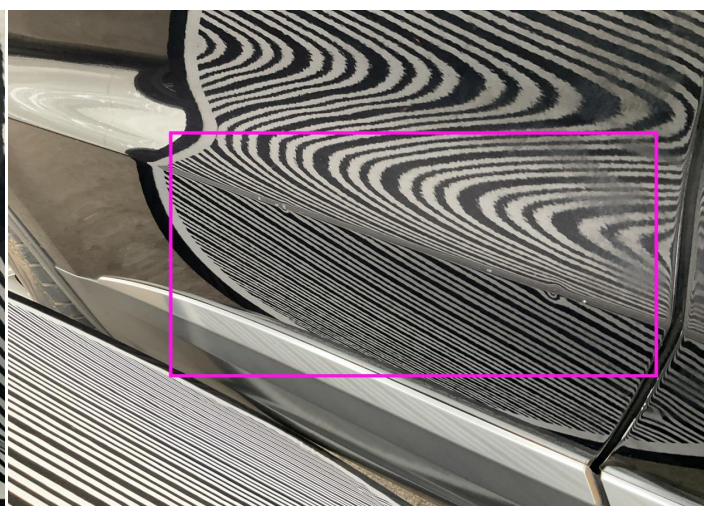
25. Bumper / Back
Paint / Scratch / Scuff -



26. Corner Bumper / Back Right
Bodywork / Breakage / Crack -



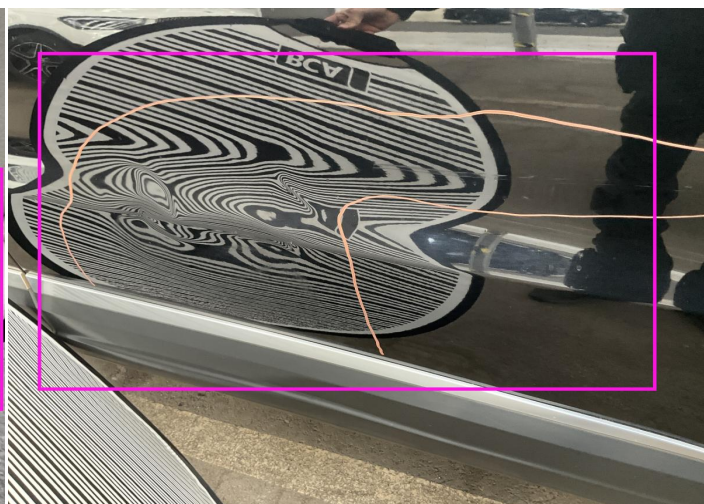
27. Fender / Back Right
Bodywork / Dent / Dent -



28. Door / Back Right
Bodywork / Dent / Dent -



29. Panel Filling / Back Right
Interior / Broken -



30. Door / Front Right
Bodywork / Dent / Dent -



31. Mirror Repeater / Right
Paint / Scratch / Scuff -



32. Rocker Panel / Center Right
Bodywork / Dent / Dent -



33. Roof Upholstery
Interior / Broken -

Mechanical Condition

Control Lights

Display Defect	✓	ABS Warning Light	✓
ESP Fault/Traction Control Malfunction Light	✓	Airbag Warning Light	✓
Oil Pressure Warning Light	✓	Brake Warning Light	✓
Power Steering Warning Light	✓	Alternator / Battery	✓
No Dashboard Lights	✓	All - wheel Drive	✓
Tire Pressure Monitoring System	✓		

Engine

Engine Status / EML	✓	Engine Leak Visible	✓
Engine Starts	✓		

Gearbox

Gear Box	✓
----------	---

Equipments Test

Electric Windows	✓	Navigation System	!
Audio Equipment	NA	Parking Sensors / Cameras Functioning	!

Levels

Brakes Fluid	✓	Coolant Fluid	✓
--------------	---	---------------	---

Test Drive Inspection

Steering Wheel

Steering | Noise / Anomaly ✓

Engine

Engine Noise ✓ The Gears Scratch / Skip / Abnormal Operation ✓

Fume Quantity ✓ Power Loss ✓

Brake

Brake System Anomaly ✓

General

Test Driven Status ✓

✓ *No troubles detected, good condition or correct tests, according to vehicle age and mileage*

! *Damages or malfunction detected that requires repairs by the buyer*

NA *Not applicable*

☐ *Not tested*

Disclaimer

Please also note the "UserGuide condition report", which shows the scope of the vehicle description.

[User Guide](#)