



# VOLKSWAGEN T6/MULTIVAN/CARAVELLE

## Transporter T6.1 DSG Kurz



VIN NO WV2ZZZ7HZN008039  
Registration Number HZN008039

MOT Date

2027-01-01

Last Service



Number of Owners

1

Last Service Mileage



Number of Keys

2

First Registration Date

2021-12-02

Odometer Reading

139758 km

Country First Registered

Germany

### Inspection Report Summary

Customer	BCA Online	Report Number	P20250902124424
Inspection Date / Place	2025-09-02 / BCA Neuss	Cosmetic Grade	4

### Vehicle Summary

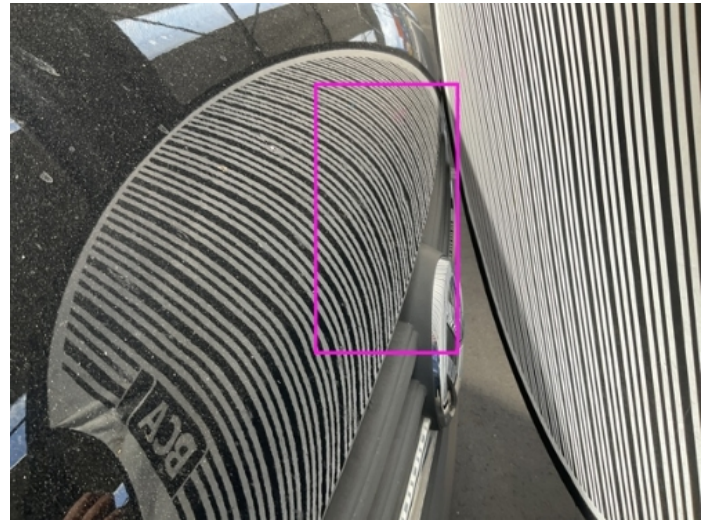
Vehicle Condition	Runner	VAT Type	Qualifying
Fuel Type	Diesel	Road Worthy	Yes
Colour	Black	Engine Size (cc)	1968
Engine Size	2.0	No of Doors	4
Body Type	Stationwagon / Estate	Drive Train	Front
Seat Colour		No of Seats	3
Seat Covering Name	Schwarz	Seat Covering	Cloth
Charging Cables		WLTP CO2 Emissions	
Gearbox Type	Automatic		

### Vehicle History & Documents

Service Book Available	-	Next Service Mileage	km
Previous Usage		Imported	No
Manufacturer Warrenty			







## Equipment

Tinted Glass	Anti-lock braking	Cruise control	Front parking sensors
Remote adjusting wing mirrors	Reversing Camera	Stability control	Leather steering wheel
Rear parking sensors	Airbag Status	Bluetooth telephone interface	Diesel particulate filter
Heated wing mirrors	Remote central locking	Satellite navigation	Electrically folding wing mirrors
Radio			

## Equipment Details

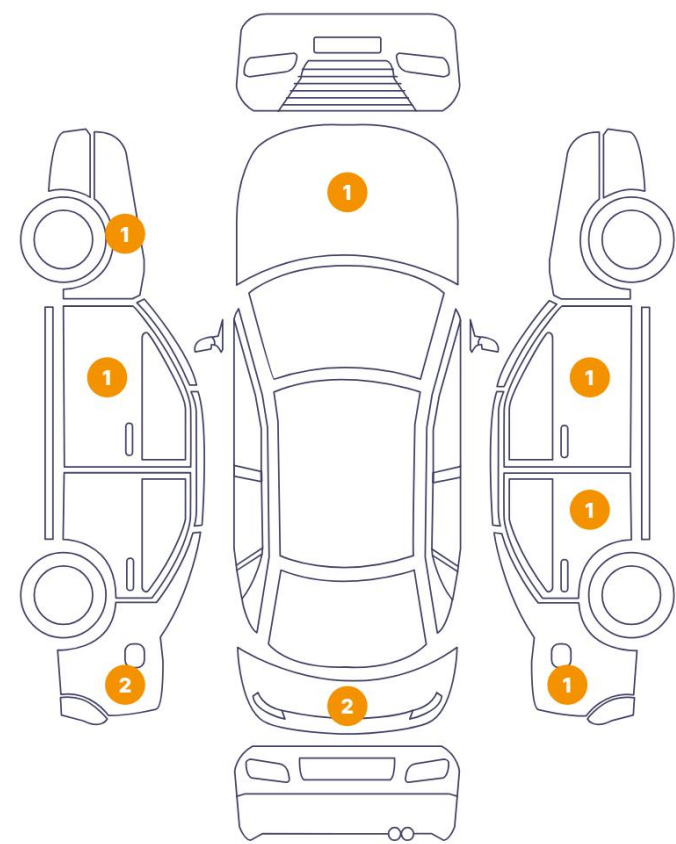
Air Conditioning	Yes	Extra Wheel / Tyre Set	Summer Tyres - Steel
Seat Heating	Front		

## Wheels & Tyres

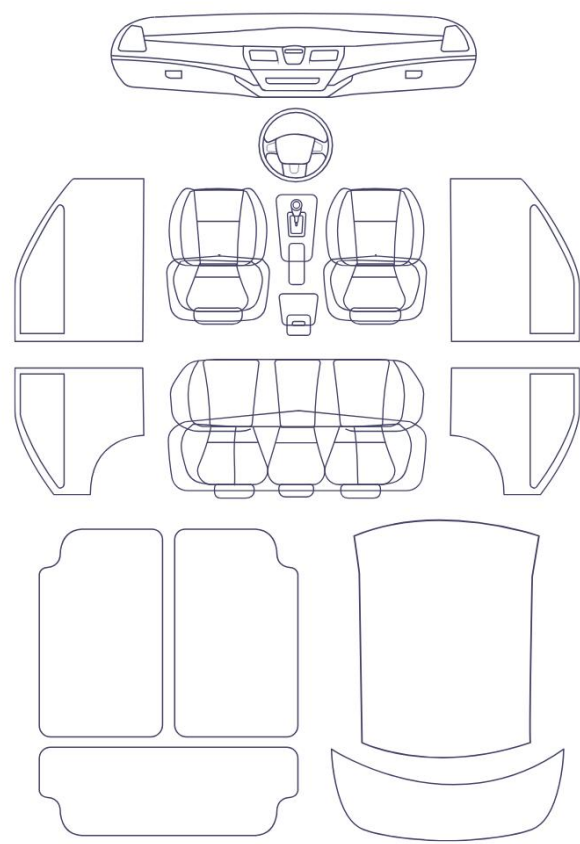
Right Front Tyre Depth	5	Left Front Tyre Depth	5
Right Rear Tyre Depth	5	Left Rear Tyre Depth	5

Cosmetic Damage

10 Schäden



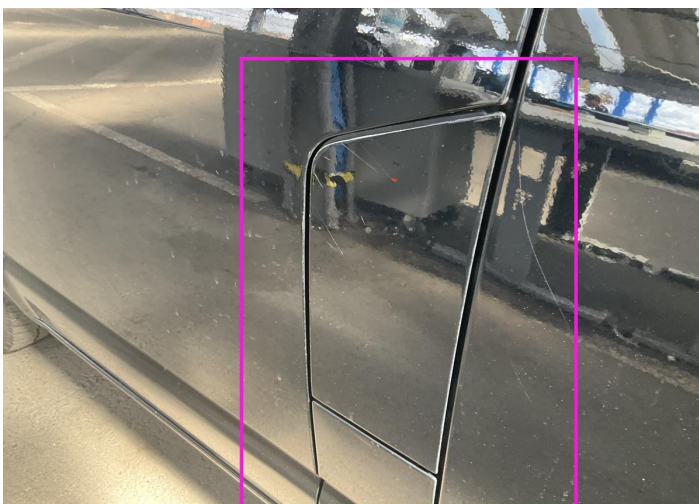
0 Schäden



Component		Damage	Comments
1	Fender / Front Left	Paint / Poor Previous Repair	
2	Door / Front Left	Paint / Scratch / Scuff	
3	Side Panel / Back Left	Paint / Scratch / Scuff	
4	Side Panel / Back Left	Bodywork / Dent / Dent	
5	Tailgate	Paint / Scratch / Scuff	
6	Tailgate	Paint / Scratch / Scuff	
7	Side Panel / Back Right	Paint / Scratch / Scuff	
8	Door / Back Right	Paint / Scratch / Scuff	
9	Mirror / Front Right	Bodywork / Breakage / Crack	
10	Hood	Bodywork / Dent / Dent	



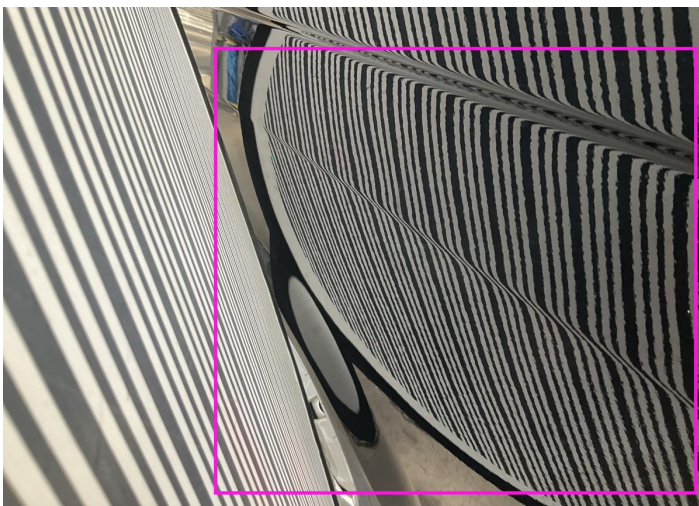
1. Fender / Front Left  
Paint / Poor Previous Repair -



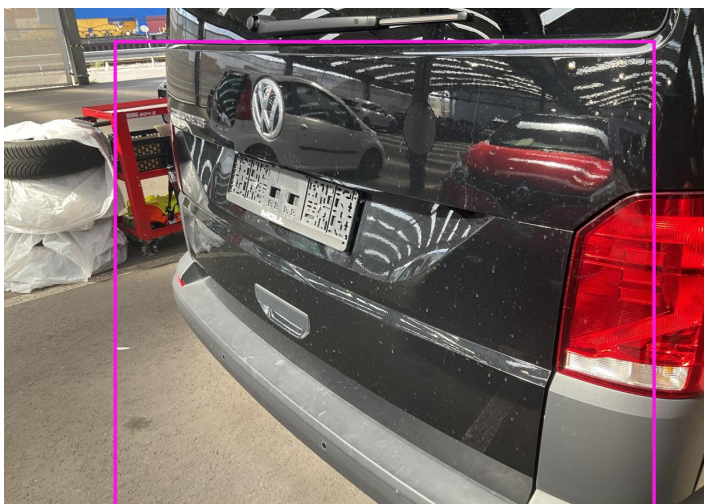
2. Door / Front Left  
Paint / Scratch / Scuff -



3. Side Panel / Back Left  
Paint / Scratch / Scuff -



4. Side Panel / Back Left  
Bodywork / Dent / Dent -



6. Tailgate  
Paint / Scratch / Scuff -



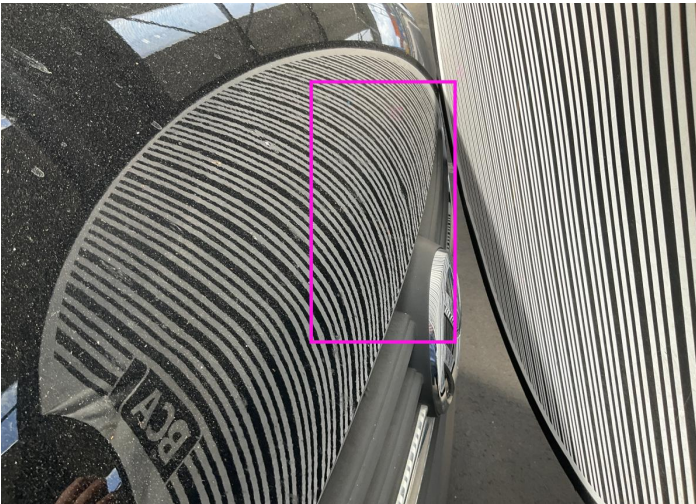
7. Side Panel / Back Right  
Paint / Scratch / Scuff -



8. Door / Back Right  
Paint / Scratch / Scuff -



9. Mirror / Front Right  
Bodywork / Breakage / Crack -



10. Hood  
Bodywork / Dent / Dent -

## Mechanical Condition

### Control Lights

Display Defect	✓	ABS Warning Light	✓
ESP Fault/Traction Control Malfunction Light	✓	Diesel Particulate Filter Light	✓
Airbag Warning Light	✓	Oil Pressure Warning Light	✓
Brake Warning Light	✓	Power Steering Warning Light	✓
Alternator / Battery	✓	No Dashboard Lights	✓

### Engine

Engine Status / EML	✓	Engine Leak Visible	✓
Engine Starts	✓		

### Gearbox

Gear Box	✓
----------	---

### Equipments Test

Electric Windows	✓	Navigation System	✓
Audio Equipment	✓	Parking Sensors / Cameras Functioning	✓
AC / Heating System	✓		

### Levels

Brakes Fluid	✓	Coolant Fluid	✓
--------------	---	---------------	---

## Test Drive Inspection

Steering Wheel			
Steering   Noise / Anomaly		✔	
Engine			
Engine Noise	✔	The Gears Scratch / Skip / Abnormal Operation	✔
Fume Quantity	✔	Power Loss	✔
Brake			
Brake System Anomaly		✔	
General			
Test Driven Status		✔	
✔ <i>No troubles detected, good condition or correct tests, according to vehicle age and mileage</i>			
❗ <i>Damages or malfunction detected that requires repairs by the buyer</i>			
NA <i>Not applicable</i>			
☐ <i>Not tested</i>			

## Disclaimer

Please also note the "UserGuide condition report", which shows the scope of the vehicle description.

[User Guide](#)