



VOLKSWAGEN Caddy 4

Caddy 1.4 TSI (5-Si.) DSG

VIN NO WV2ZZZ2KZLX065405
Registration Number KZLX065405



MOT Date	Number of Owners	Number of Keys	Odometer Reading
2027-07-01	1	2	84221 km
Last Service	Last Service Mileage	First Registration Date	Country First Registered
-	-	2020-02-18	Germany

Inspection Report Summary

Customer	BCA Online	Report Number	P20251006142014
Inspection Date / Place	2025-10-06 / BCA Neuss	Cosmetic Grade	4

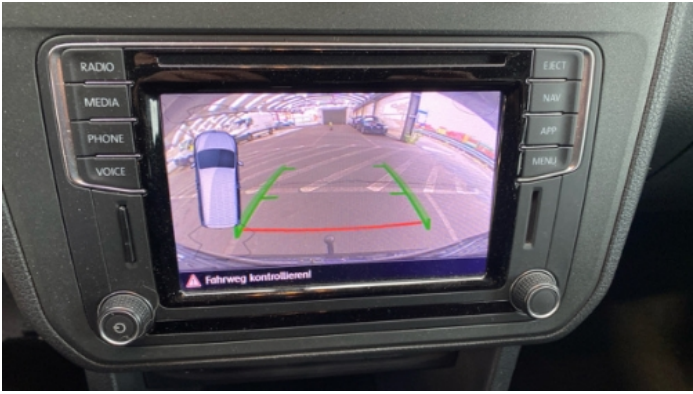
Vehicle Summary

Vehicle Condition	Runner	VAT Type	Qualifying
Fuel Type	Petrol	Gearbox Type	Automatic
Colour	Black	Engine Size (cc)	1395
Engine Size	1.4	No of Doors	5
Body Type	Stationwagon / Estate	Drive Train	Front
Seat Colour		No of Seats	5
Seat Covering Name	Titanschwarz	Seat Covering	Cloth
Charging Cables		NEDC CO2 Rating (q/km)	133

Vehicle History & Documents

Service Book Available	Incomplete	Next Service Mileage	km
Previous Usage		Imported	No
Manufacturer Warrenty			







Equipment

Tinted Glass	USB Socket	Alloys wheels	Auxiliary Socket
Cruise control	Front parking sensors	Remote adjusting wing mirrors	Reversing Camera
Satellite navigation	CD Player	Leather steering wheel	Radio
Tow ball	Airbag Status	Anti-lock braking	Bluetooth telephone interface
Front fog lamps	Heated wing mirrors	Remote central locking	Roof rails
Stability control	Electrically folding wing mirrors	LED Headlamps	Rear parking sensors

Equipment Details

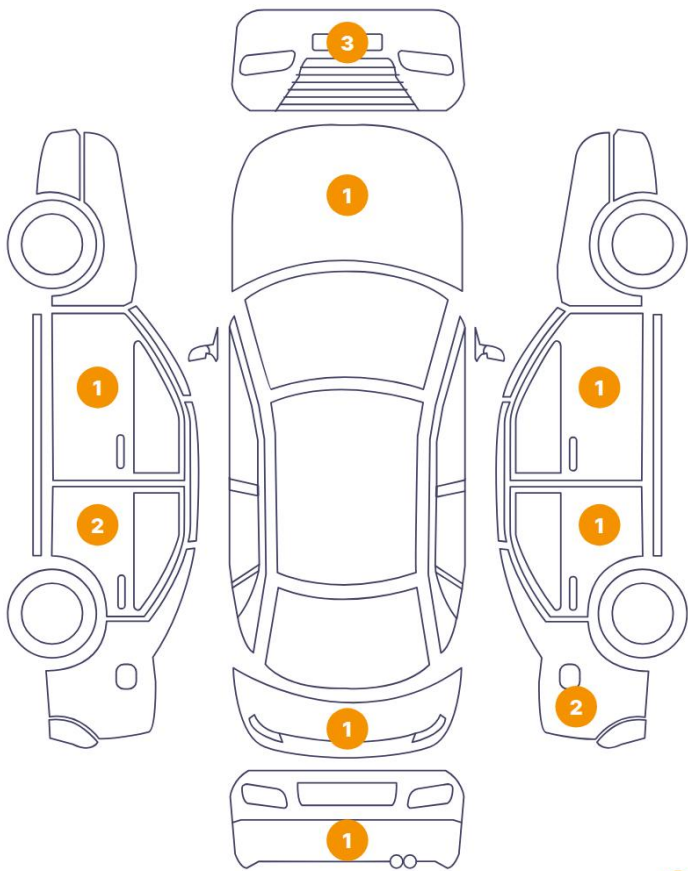
Tow Ball Type	Detachable	Air Conditioning	Dual Zone Climate Control
Alloy Wheel Size	16	Seat Heating	Front

Wheels & Tyres

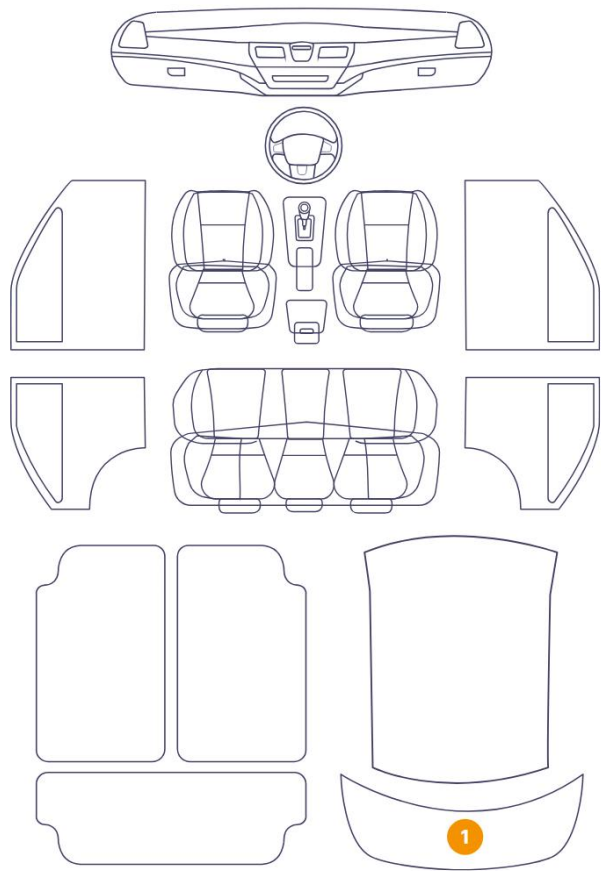
Right Front Tyre Depth	7	Left Front Tyre Depth	7
Right Rear Tyre Depth	7	Left Rear Tyre Depth	7

Cosmetic Damage

14 Schäden



1 Schäden



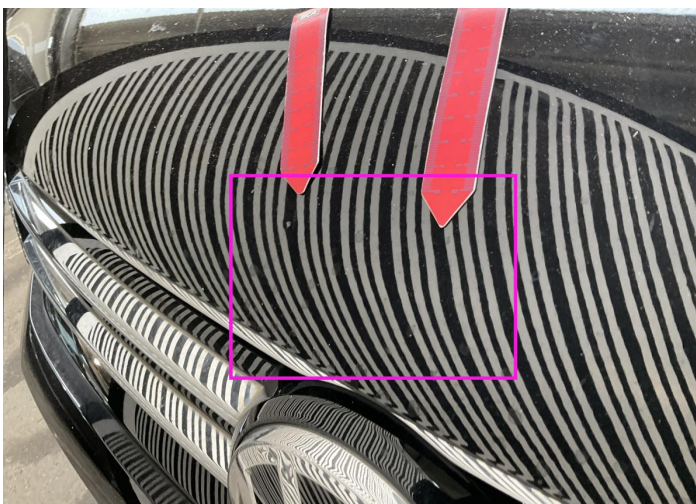
48 1

Component		Damage	Comments
1	Tailgate Upholstery / Back	Interior / Scratched	
2	Hood	Bodywork / Dent / Dent	
3	Corner Bumper / Front Right	Paint / Scratch / Scuff	
4	Bumper / Front	Paint / Scratch / Scuff	
5	Corner Bumper / Front Left	Paint / Scratch / Scuff	
6	Door / Front Left	Bodywork / Dent / Dent	
7	Door / Back Left	Paint / Scratch / Scuff	
8	Door / Back Left	Paint / Scratch / Scuff	
9	Bumper / Back	Paint / Scratch / Scuff	
10	Fender / Back Right	Paint / Scratch / Scuff	
11	Fender / Back Right	Paint / Scratch / Scuff	
12	Door / Back Right	Paint / Scratch / Scuff	

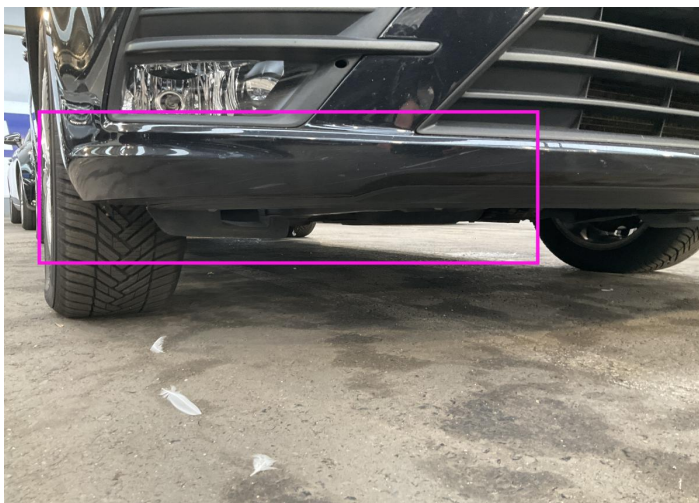
13	Mirror Shell / Front Right	Paint / Scratch / Scuff
14	Other	Bodywork / Breakage
15	Tailgate	Bodywork / Dent / Dent



1. Tailgate Upholstery / Back Interior / Scratched -



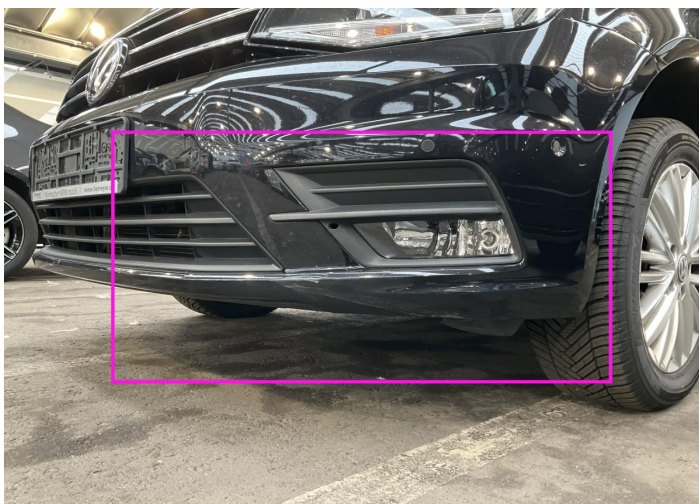
2. Hood / Bodywork / Dent / Dent -



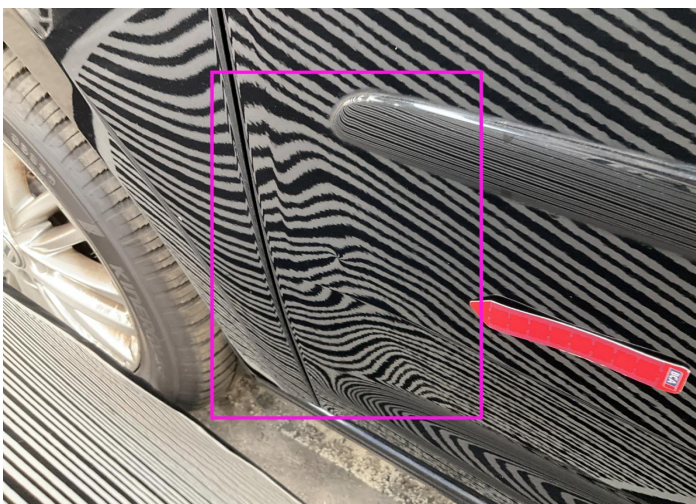
3. Corner Bumper / Front Right / Paint / Scratch / Scuff -



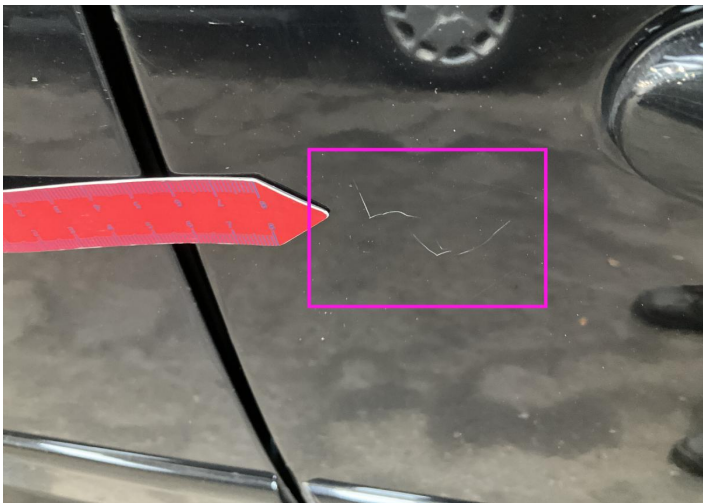
4. Bumper / Front / Paint / Scratch / Scuff -



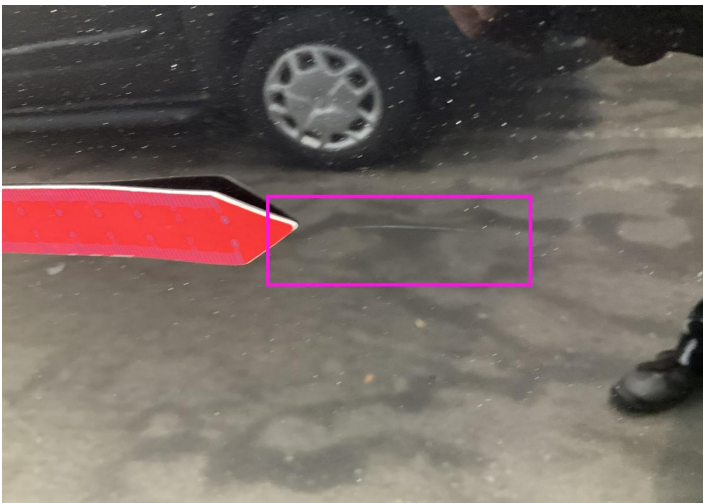
5. Corner Bumper / Front Left / Paint / Scratch / Scuff -



6. Door / Front Left / Bodywork / Dent / Dent -



7. Door / Back Left
Paint / Scratch / Scuff -



8. Door / Back Left
Paint / Scratch / Scuff -



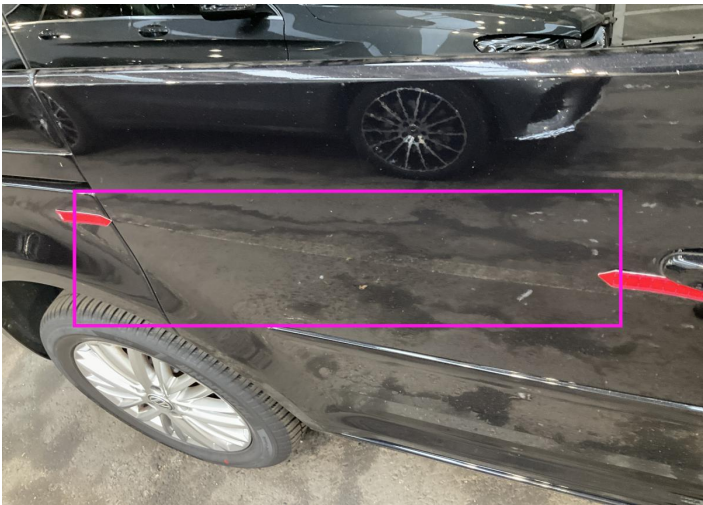
9. Bumper / Back
Paint / Scratch / Scuff -



10. Fender / Back Right
Paint / Scratch / Scuff -



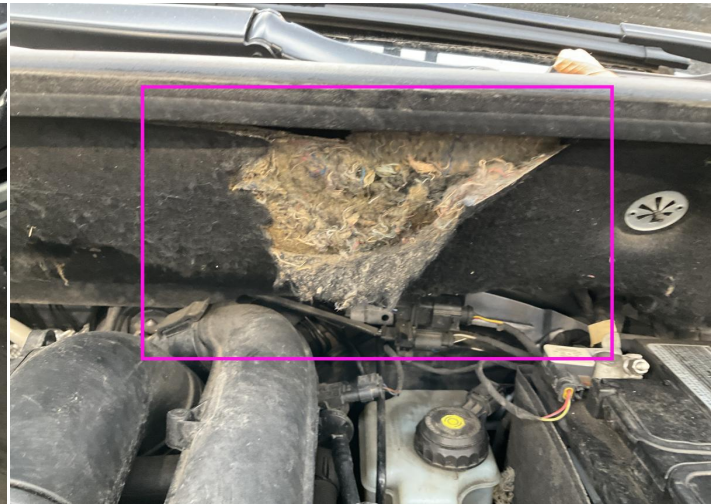
11. Fender / Back Right
Paint / Scratch / Scuff -



12. Door / Back Right
Paint / Scratch / Scuff -



13. Mirror Shell / Front Right
Paint / Scratch / Scuff -



14.
Bodywork / Breakage -



15. Tailgate
Bodywork / Dent / Dent -

Mechanical Condition

Control Lights

ABS Warning Light	✓	ESP Fault/Traction Control Malfunction Light	✓
Airbag Warning Light	✓	Oil Pressure Warning Light	✓
Brake Warning Light	✓	Power Steering Warning Light	✓
Alternator / Battery	✓	No Dashboard Lights	✓
Display Defect	✓	Tire Pressure Monitoring System	✓

Engine

Engine Status / EML	✓	Engine Leak Visible	✓
Engine Starts	✓		

Gearbox

Gear Box	✓
----------	---

Equipments Test

Electric Windows	✓	Navigation System	✓
Audio Equipment	✓	AC / Heating System	✓
Main & Spare Keys Functioning	✓	Parking Sensors / Cameras Functioning	✓

Levels

Brakes Fluid	✓	Coolant Fluid	✓
--------------	---	---------------	---

Test Drive Inspection

Steering Wheel			
Steering Noise / Anomaly		✔	
Engine			
Engine Noise	✔	The Gears Scratch / Skip / Abnormal Operation	✔
Fume Quantity	✔	Power Loss	✔
Brake			
Brake System Anomaly		✔	
General			
Test Driven Status		✔	
✔ <i>No troubles detected, good condition or correct tests, according to vehicle age and mileage</i>			
❗ <i>Damages or malfunction detected that requires repairs by the buyer</i>			
NA <i>Not applicable</i>			
☐ <i>Not tested</i>			

Disclaimer

Please also note the "UserGuide condition report", which shows the scope of the vehicle description.

[User Guide](#)