



Expertise

Protocol number: 41652818
Order No. / Reference: 25149461
Inspection date: 23 Sept 2025

Manufacturer: Volkswagen

Model: Crafter 35 TDI Autm. VA

VIN: WV1ZZZSYZN9033128



Vehicle details	
Manufacturer / Type / Model / Equipment	
Volkswagen Crafter 35 TDI Autm. VA	
Vehicle Identification number	WV1ZZZSYZN9033128
Mileage (Read)	15,956 km
First registration	30 Mar 2022
Number of holders	1
Power / Engine displacement	103 kw / 1,968 ccm
Fuel type / Cylinder	Diesel / 4
Gearbox / Number of gears	Automatic / 8
Type of drive	Front drive
Type of vehicle	Van
Colour / colour code	Reflexsilber-metallic
Doors / Seats	4 / 3
Upholstery type	Cloth
Colour of upholstery	Black-Grey
Vehicle with smoke odor	no



Vehicle details

Maintenance booklet / proof	Non-existent	Next maintenance in	17,100 km
Key is / should be	2 / 2	FZG documents	ZB#2 (B) was available (copy), ZB#1 (S) was not available
		Letter No.	GH996485
Previous damage / Accident	None detectable	Repainting	None detectable
Inspection conditions	sufficient	Lifting equipment / pit	No
Test drive	Not performed	Engine function test	Performed
Manufacturer key number/ type code number	0603 / CBY 50944		
Emission standard	EURO6;WLTP;AR;PI/CI;N1 III, N2	Fine dust sticker	
Permitted total weight	3,500 kg	Empty weight	

Tyres

Mounted tyres

#	Tyre size	Type of tyre	Manufacturer	Tread depth
1)	205/75 R16 113R	Summer tyres on Steel rim with wheel cover	Continental	7mm / 7mm
2)	205/75 R16 113R	Summer tyres on Steel rim with wheel cover	Continental	8mm / 8mm

Additional tyres

#	Tyre size	Type of tyre	Manufacturer	Tread depth
1)	205/75 R16 113R	Winter tyres on Steel	Continental	8mm / 8mm
2)	205/75 R16 113R	Winter tyres on Steel	Continental	9mm / 9mm

Replacement

Typ	Tyre size	Type of tyre	Manufacturer	Tread depth
E				

Legend: Tread depth information for tires on the left is in the first place, for tires on the right is in the second place on the axle in the direction of travel

Equipment

Standard equipment

- Exterior mirrors (left and right) convex, with integrated LED indicator and wide-angle range
- Floor coverings: Rubber floor covering in the driver's cab
- Three-point automatic seat belts (with belt height adjustment and belt tensioners for driver and front passenger)
- Total weight: Vehicle registration with a permissible total weight of 3.5 t
- High roof, exterior painted in body color
- Headrests (2)
- Steering wheel adjustable in height and reach
- Marker lights, side
- Particle filter: Soot particle filter for diesel (including SCR and AdBlue tank)
- Wheels/Tires: 205/75 R 16 C 113/111, rolling resistance optimized
- Wheels: Tire Mobility Set (12-volt compressor and tire sealant)
- Crosswind Assist
- Seat belt reminder (warning buzzer and light when front seat belt is not fastened)
- Power socket: 12 V socket and 4 cup holders in the dashboard
- First aid kit, warning triangle and safety vest
- Electronic immobilizer
- Central locking with radio remote control and interior operation
- Registration as a truck (with an N1 registration (up to and including 3.5 t permissible total weight))
- Exterior mirrors, adjustable from the outside
- Hill Start Assist
- Brake light, third
- Electronic Stabilization Program and ABS
- Deletion: Without tachograph
- Electric windows, front
- Transmission: 8-speed automatic
- Rear doors/tailgate: Hinges for rear doors
- Instrument display (km/h) (displays for speed, total/trip distance, rpm, fuel level and time)
- Headlight range adjustment
- Multifunction display "Plus"
- Upholstery: Seat covers in fabric, design "Austin"
- Wheel cover center
- Wheels: Steel wheels 6.5 J x 16, in silver (load capacity 1,050 kg)
- Sliding door, right in the passenger/cargo area
- Key for locking system: 2 radio folding keys
- Electromechanical power steering
- Seats 1st row: Right seat
- Start-stop system (with brake energy recovery)
- Sockets: 2 12 V sockets in the cab (in the control panel)
- Daytime running light
- Lashing eyes for securing loads
- Heat-insulating glazing (front and rear side windows and rear window in heat-insulating glass (if available))
- Accessories: Onboard tool kit

Extra equipment

- Storage package 2: Roof gallery with two 1-DIN slots and reading light
- Exterior mirrors, electrically adjustable, heated and folding
- Omission: Lashing eyes for securing loads
- Suspension/damping, reinforced and stabilization, reinforced
- Cruise control including speed limiter
- Speed warning system
- Rear wing doors with window (rear wing doors with window cutouts - rear window)
- Paint finish: metallic
- Steering wheel: multifunction steering wheel (3 spokes)
- Fog lights including cornering lights
- "Discover Media" radio navigation system including streaming and internet with 4 speakers (voice control - 2 USB ports (Type C) in the dashboard - glove compartment with lockable lid, illuminated - "Discover Media" radio navigation system with 20.3 cm (8-inch) touch display including streaming and internet - 4 speakers: 2 tweeters, 2 woofers - wired and wireless app connect - mobile phone interface)
- Airbag for driver and front passenger (with passenger airbag deactivation)
- Floor coverings: Universal floor with lashing eyes and lashing rails in the longitudinal direction
- Windows: Heated rear window with rear window washer
- Window: Side window in the passenger/cargo area, front right, permanently installed
- Front axle weight class (reinforced front axle)
- Interior wall cladding
- Air conditioning with manual control in the driver's cab
- LED headlights with LED daytime running lights (headlight range adjustment, automatically controlled)
- ParkPilot in the front and rear areas
- Radio accessories: Digital radio reception DAB+
- Wheels, tires: Spare wheel (steel rim) with driving tires as well as on-board tools and jack
- Wheels/Tires: Winter tires (additional) 205/75 R 16 C 113/111 R mounted on 4 steel wheels



- | | |
|---|--|
| <ul style="list-style-type: none"> • Seats 1st row: Comfort seat left 3TE • Seat heating, left and right, separately adjustable, in the 1st row of seats • Rear step, across full width • Preparation for universal floor with plastic wheel arch liner | <ul style="list-style-type: none"> • Seats 1st row: Passenger double seat on the right, with storage compartment, in the 1st row (including headrest, height adjustable) • Seats 1st row: Comfort seat left, in the 1st row • Auxiliary heater for windscreen defrosting and heating • Partition walls: Partition wall, with cladding and fixed window |
|---|--|

Brief expert findings

Documents submitted	At the time of the inspection, the registration certificate Part 2 (letter) was available, but the registration certificate Part 1 (certificate) was not. (Copy)
VIN comparison	The vehicle identification number (VIN) was read from the vehicle and its conformity with the submitted documents was verified during the inspection by the undersigned.
Inspection	The inspection conditions were sufficient for the assessment of the vehicle. No lifting equipment or pit was available to inspect the vehicle. Therefore, inspection of the vehicle's underside was only possible to a limited extent.
Test drive	No test drive/maneuvering was carried out during the inspection of the vehicle.
Engine function test	An engine test run was performed.

Value reducing factors

No.	Component group	Description
1	Bonnet	Insulation lining (Mehrkosten möglich) - Damage caused by marten / rodent - Replace
2	Rear bumper	Rear bumper (unpainted) - Scratched - Loss in value
3	Door - front left side	Door - dent(s) - Smart repair
4	Door - rear right side	Door - Scratch(es) - Smart repair
5	Side panel - rear right side	Side panel - dent(s) - Smart repair

Wear and tear

No.	Component group	Description
1	Misc.	Inspection / maintenance - No evidence - No deduction
2	Body	Body - Stone chips - No deduction
3	Body	Body - Scratch(es) - No deduction
4	Vehicle glazing	Windscreen - Stone chips - No deduction

The vehicle shows signs of wear commensurate with its age and use.

Order/Scope of order

The order was placed to prepare a sales report for the vehicle described. This includes the following:

- Description of core relevant information about the vehicle
- Documentation of equipment features
(Delivery by third-party service providers)
- Documentation of damage, defects, missing parts
- Documentation of previous damage, unrepaired previous damage, repainting
- a brief visual or functional inspection of the equipment details if possible.
(Functional tests of driver assistance systems are not included in the scope of services!)
- a photo documentation of the vehicle



Basis for the order

This product is based on the guidelines for vehicle returns and valuations of light commercial vehicles from Alphabet Fuhrparkmanagement GmbH. The expert makes the explicit findings in each individual case objectively within the framework of the specified standards based on his or her own expertise.

The vehicle inspection takes place in a disassembled state.

Damage or defects that can only be detected during disassembly/diagnosis work or through advanced knowledge remain within the scope of the prognosis risk. An extended risk exists for concealed defects caused by fraudulent deception and not identifiable by the expert.

Damage or defects resulting from normal use or wear and tear of the vehicle will be accepted according to the applicable standard.

There was no explicit identification or monetary consideration of the expected features within the product.

Features which in their nature and severity slightly exceed normal use but do not constitute unacceptable damage will be documented and identified under signs of use if necessary.

Damage or defects which, according to the underlying standard, can no longer be attributed to normal use or wear and tear are listed in the product under "Depreciating Factors".

Depending on the product specification, a monetary ID can be provided. If this takes place, the costs can be 100% d or pro rata depending on the vehicle's age and mileage.

Previous damages

Apparently, no repaired previous damage could be found on the vehicle.



Figure 1: Diagonal front (left)



Figure 2: Diagonal front (right)



Figure 3: Diagonal rear (left)



Figure 4: Diagonal rear (right)



Figure 5: Interior - front



Figure 6: Interior - rear



Figure 7: Instrument cluster



Figure 8: Instrument panel



Figure 9: Interior 360° view



Figure 10: Cargo area



Figure 11: VIN



Figure 12: Mounted tyres



Figure 13: Documents

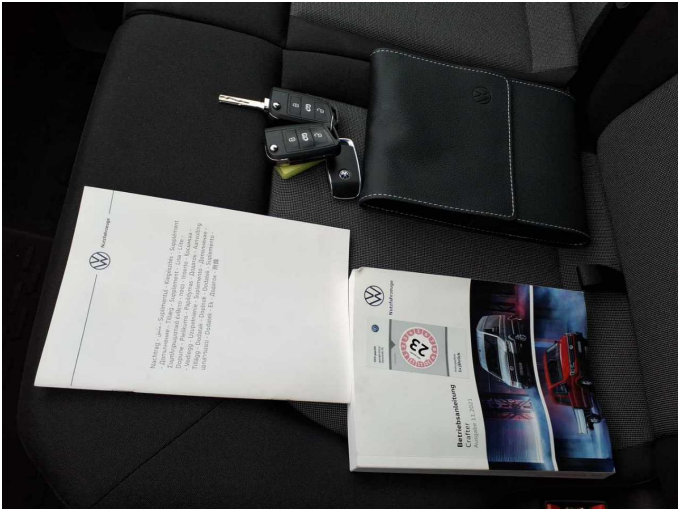


Figure 14: Documents



Figure 15: Additional tyres

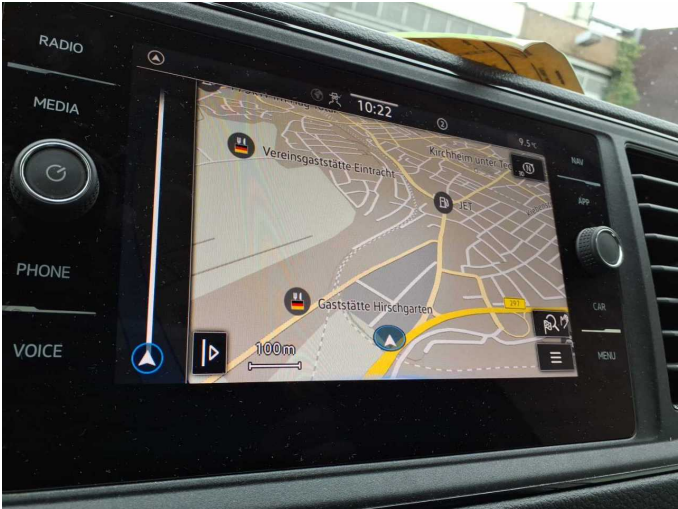


Figure 16: Navigation



Figure 17: Misc.



Figure 18: Misc.



Figure 19: Misc.



Figure 20: Misc.



Figure 21: Misc.



Figure 22: Misc.



Figure 23: Misc.



Figure 24: Misc.



Figure 25: Misc.



Figure 26: Misc.



Figure 27: Misc.



Figure 28: Misc.



Figure 29: Misc.

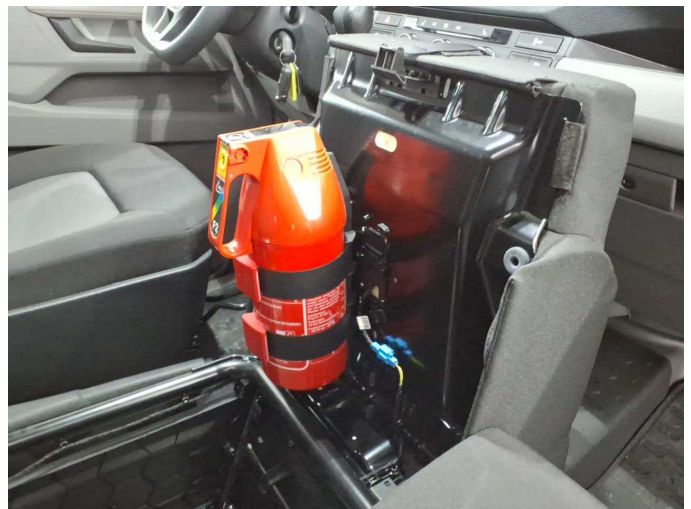


Figure 30: Misc.



Damage 1: Bonnet: Insulation lining (Mehrkosten möglich) - Damage caused by marten / rodent - Replace



Damage 1: Bonnet: Insulation lining (Mehrkosten möglich) - Damage caused by marten / rodent - Replace



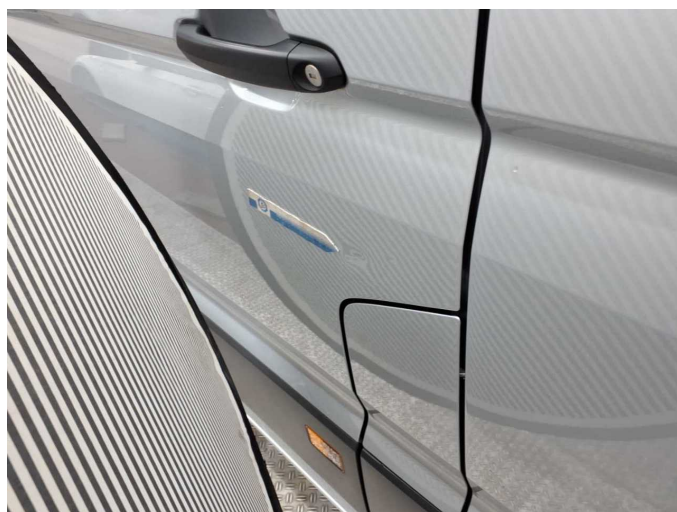
Damage 2: Rear bumper: Rear bumper (unpainted) - Scratched - Loss in value



Damage 2: Rear bumper: Rear bumper (unpainted) - Scratched - Loss in value



Damage 3: Door - front left side: Door - dent(s) - Smart repair



Damage 3: Door - front left side: Door - dent(s) - Smart repair



Damage 4: Door - rear right side: Door - Scratch(es) - Smart repair



Damage 4: Door - rear right side: Door - Scratch(es) - Smart repair



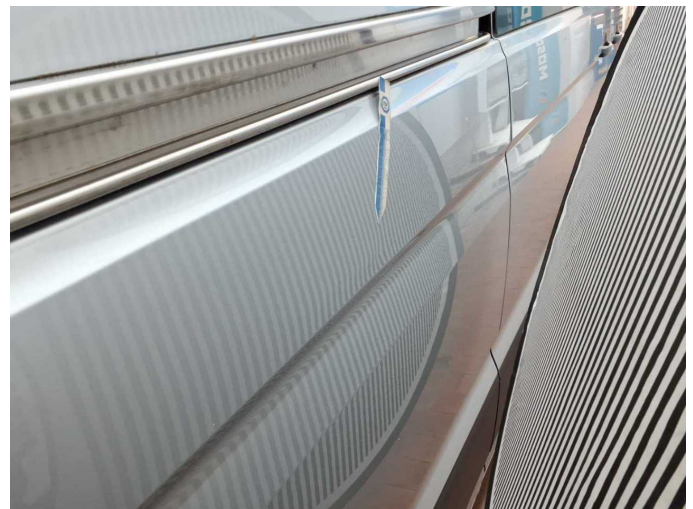
Damage 5: Side panel - rear right side: Side panel - dent(s) - Smart repair



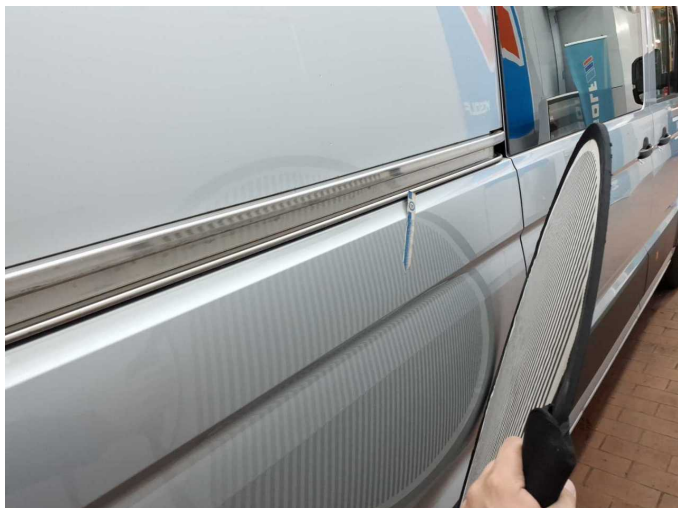
Damage 5: Side panel - rear right side: Side panel - dent(s) - Smart repair



Damage 5: Side panel - rear right side: Side panel - dent(s) - Smart repair



Damage 5: Side panel - rear right side: Side panel - dent(s) - Smart repair



Damage 5: Side panel - rear right side: Side panel - dent(s) - Smart repair



Damage 5: Side panel - rear right side: Side panel - dent(s) - Smart repair