



Expertise

Protocol number: 41781777  
Order number / reference: 25255267  
Inspection date: 1 Oct 2025

Manufacturer: Volkswagen

Model: Crafter 35 Kasten TDI VA

VIN: WV1ZZZSYZM9039898



Vehicle details	
Manufacturer / Type / Model / Equipment	
Volkswagen Crafter 35 Kasten TDI VA	
Vehicle Identification number	WV1ZZZSYZM9039898
Mileage (Read)	138,027 km
First registration	22 Jun 2021
Number of holders	1
Power / Engine displacement	103 kw / 1,968 ccm
Fuel type / Cylinder	Diesel / 4
Gearbox / Number of gears	Manual / 6
Type of drive	Front drive
Type of vehicle	Van
Colour / colour code	Candy White (B9A)
Doors / Seats	4 / 2
Upholstery type	Cloth
Colour of upholstery	Black-Grey



## Vehicle details

<b>Maintenance booklet / proof</b>	digital proof / complete	<b>Next maintenance in</b>	13,200 km
<b>Last maintenance on / at</b>	06/2025 at 130,252 km		
<b>Key is / should be</b>	2 / 2	<b>FZG documents</b>	ZB#2 (B) was available (copy), ZB#1 (S) was not available
		<b>Letter No.</b>	GE680125
<b>Previous damage / Accident</b>	Detectable	<b>Repainting</b>	Detectable
<b>Inspection conditions</b>	sufficient	<b>Lifting equipment / pit</b>	yes
<b>Test drive</b>	Not performed	<b>Engine function test</b>	Performed
<b>Manufacturer key number/ type code number</b>	0603 / CBY 44667		
<b>Emission standard</b>	EURO6;WLTP;CI;PI/CI;N1 III, N2	<b>Fine dust sticker</b>	
<b>Permitted total weight</b>	3,500 kg	<b>Empty weight</b>	

## Tyres

### Mounted tyres

#	Tyre size	Type of tyre	Manufacturer	Tread depth
1)	205/75 R16 113T	Summer tyres on Steel rim with wheel cover	Continental	6 mm
	205/75 R16 113T	All-season tyres on Steel rim with wheel cover	Barum	6 mm
2)	205/75 R16 113T	Summer tyres on Steel rim with wheel cover	Continental	8mm / 8mm

### Additional tyres

#	Tyre size	Type of tyre	Manufacturer	Tread depth
1)	205/75 R16 110R	Winter tyres on Steel	Continental	3mm / 3mm
2)	205/75 R16 110R	Winter tyres on Steel	Goodyear	6mm / 6mm

### Replacement

Typ	Tyre size	Type of tyre	Manufacturer	Tread depth
E	205/75 R16	All-season tyres on Steel	Continental	9 mm

**Legend:** Tread depth information for tires on the left is in the first place, for tires on the right is in the second place on the axle in the direction of travel

## Equipment

### Standard equipment

- Airbag: Driver's side
- Hill Start Assist
- Floor coverings: Rubber floor covering in the driver's cab
- Three-point automatic seat belts (with belt height adjustment and belt tensioners for driver and front passenger)
- Total weight: Vehicle registration with a permissible total weight of 3.5 t
- High roof, exterior painted in body color
- Headrests (2)
- Paint finish: Uni
- Headlight range adjustment
- Particle filter: Soot particle filter for diesel (including SCR and AdBlue tank)
- Sliding door, right in the passenger/cargo area
- Crosswind Assist
- Seat belt monitoring (warning buzzer and light when driver's seat belt is not fastened)
- Sockets: 2 12 V sockets in the cab (in the control panel)
- Daytime running light
- First aid kit, warning triangle and safety vest
- Electronic immobilizer
- Central locking with radio remote control and interior operation
- Registration as a truck (with an N1 registration (up to and including 3.5 t permissible total weight))
- Exterior mirrors (left and right) convex, with integrated LED indicator and wide-angle range
- Brake light, third
- Electronic Stabilization Program and ABS
- Chassis: Suspension and damping, standard
- Electric windows, front
- Transmission: 6-speed transmission
- Rear wing door without window cutout
- Instrument display (km/h) (displays for speed, total/trip distance, rpm, fuel level and time)
- Steering wheel adjustable in height and reach
- Multifunction display "Plus"
- Upholstery: Seat covers in fabric, design "Austin"
- Wheel cover center
- Key for locking system: 2 radio folding keys
- Electromechanical power steering
- Start-stop system (with brake energy recovery)
- Power socket: 12 V socket and 4 cup holders in the dashboard
- Partition walls: Partition wall
- Lashing eyes for securing loads
- Heat-insulating glazing (front and rear side windows and rear window in heat-insulating glass (if available))
- Accessories: Onboard tool kit

### Extra equipment

- Storage package 2: Roof gallery with two 1-DIN slots and reading light
- Trailer hitch, rigid (including trailer stabilization)
- Omission: Lettering on the rear (without lettering for type designation)
- Suspension/damping, reinforced and stabilization, reinforced
- Cruise control including speed limiter
- Instrument panel: Control panel with additional console (including 1 DIN slot and 4 additional switch positions)
- Marker lights, side
- Fog lights including cornering lights
- "Discover Media" radio navigation system including streaming and internet with 4 speakers (voice control - 2 USB ports (Type C) in the dashboard - glove compartment with lockable lid, illuminated - "Discover Media" radio navigation system with 20.3 cm (8-inch) touch display including streaming and internet - 4 speakers: 2 tweeters, 2 woofers - wired and wireless app connect - mobile phone interface)
- Sortimo installation
- Auxiliary heaters/auxiliary heaters: Electric auxiliary air heater (1,400 W)
- Airbag for driver and front passenger (with passenger airbag deactivation)
- Exterior mirrors electrically adjustable and heated
- Driver assistance systems: "Front Assist" environment monitoring system with City Emergency Braking function
- Floor mats: All-weather mats in the driver's cab (made of rubber)
- Heating: second heat exchanger (under the right seat box)
- Air conditioning in the driver's cab with electric control
- M+S tires
- Fatigue detection
- ParkPilot in the front and rear areas
- Radio accessories: Digital radio reception DAB+
- Wheels, tires: Spare wheel (steel rim) with driving tires as well as on-board tools and jack
- Rear view camera
- Hinges for rear doors with increased opening angle (270 °)
- Mud flaps, front and rear
- Seats 1st row: Comfort seat right, in the 1st row
- Seats 1st row: Suspension seat "ergoComfort" left, in the 1st row
- Auxiliary heaters/auxiliary heaters: Auxiliary water heater with programmable auxiliary heating function (with radio remote control)



- Tachograph: Preparation Digital Tachograph (Smart TCO) (for retrofitting a tachograph from VDO or Intellic)

- First aid kit, warning triangle, safety vest and warning light

## Brief expert findings

Documents submitted	At the time of the inspection, the registration certificate Part 2 (letter) was available, but the registration certificate Part 1 (certificate) was not. (Copy)
VIN comparison	The vehicle identification number (VIN) was read from the vehicle and its conformity with the submitted documents was verified during the inspection by the undersigned.
Inspection	The inspection conditions were sufficient for the assessment of the vehicle. Lifting equipment and a pit were available for examining the vehicle.
Test drive	No test drive/maneuvering was carried out during the inspection of the vehicle.
Engine function test	An engine test run was performed.

## Value reducing factors

No.	Component group	Description
1	Sliding door, right	Sliding door - dent(s) - Smart repair
2	Vehicle glazing	Windscreen - Damaged - Replace

## Wear and tear

No.	Component group	Description
1	Interior	Installations - Missing - No deduction
2	Door - front left side	Door - dent(s) - No deduction

The vehicle shows signs of wear commensurate with its age and use.

## Previous damages

No.	Previous damage	Extent of damage (Net)
1	Side right, Provided by user / customer, from 17 Mar 2023	1.213,10 €
2	Side - left, Provided by user / customer, from 21 Oct 2021	1.886,57 €

## Repainting

No.	Repainting
1	Side panel - rear right side, Professionally carried out, Invoice of repair done Non-existent

## Paint coat thickness measurement

Side panel - rear right side	177 µm
------------------------------	--------



## Order/Scope of order

The order was placed to prepare a sales report for the vehicle described. This includes the following:

- Description of core relevant information about the vehicle
- Documentation of equipment features  
(*Delivery by third-party service providers*)
- Documentation of damage, defects, missing parts
- Documentation of previous damage, unrepaired previous damage, repainting
- a brief visual or functional inspection of the equipment details if possible.  
(*Functional tests of driver assistance systems are not included in the scope of services!*)
- a photo documentation of the vehicle

## Basis for the order

This product is based on the guidelines for vehicle returns and valuations of light commercial vehicles from Alphabet Fuhrparkmanagement GmbH. The expert makes the explicit findings in each individual case objectively within the framework of the specified standards based on his or her own expertise.

The vehicle inspection takes place in a disassembled state.

Damage or defects that can only be detected during disassembly/diagnosis work or through advanced knowledge remain within the scope of the prognosis risk. An extended risk exists for concealed defects caused by fraudulent deception and not identifiable by the expert.

Damage or defects resulting from normal use or wear and tear of the vehicle will be accepted according to the applicable standard.

There was no explicit identification or monetary consideration of the expected features within the product.

Features which in their nature and severity slightly exceed normal use but do not constitute unacceptable damage will be documented and identified under signs of use if necessary.

Damage or defects that can no longer be attributed to normal use or wear and tear according to the underlying standard are listed in the product under value-reducing factors.

Depending on the product specification, a monetary ID can be provided. If this takes place, the costs can be 100% d or pro rata depending on the vehicle's age and mileage.

## Previous damages

According to available information previous damages were repaired at the vehicle. Traces of repairs, which allow conclusions about the area of repair, were not recognizable during the inspection.

## Comments

- Winterradsatz ist kein Bestandteil des Auslieferungsumfangs





Figure 1: Diagonal front (left)



Figure 2: Diagonal front (right)



Figure 3: Diagonal rear (left)



Figure 4: Diagonal rear (right)



Figure 5: Interior - front



Figure 6: Interior - rear





Figure 7: Instrument cluster



Figure 8: Instrument panel



Figure 9: Interior 360° view



Figure 10: Cargo area



Figure 11: VIN



Figure 12: Mounted tyres





Figure 13: Documents

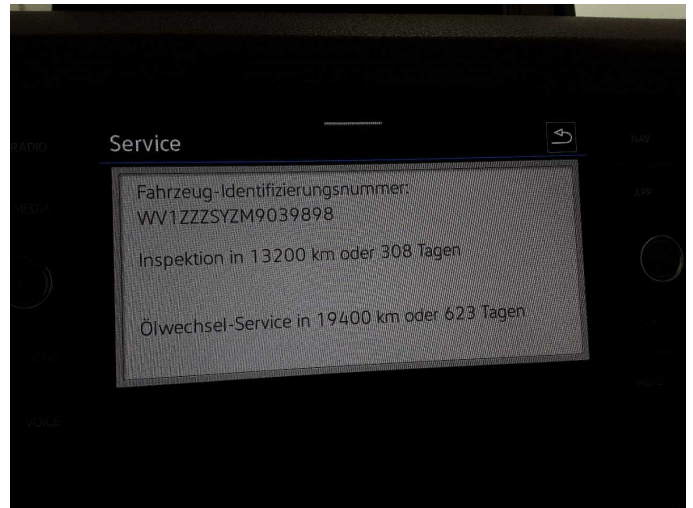


Figure 14: Documents

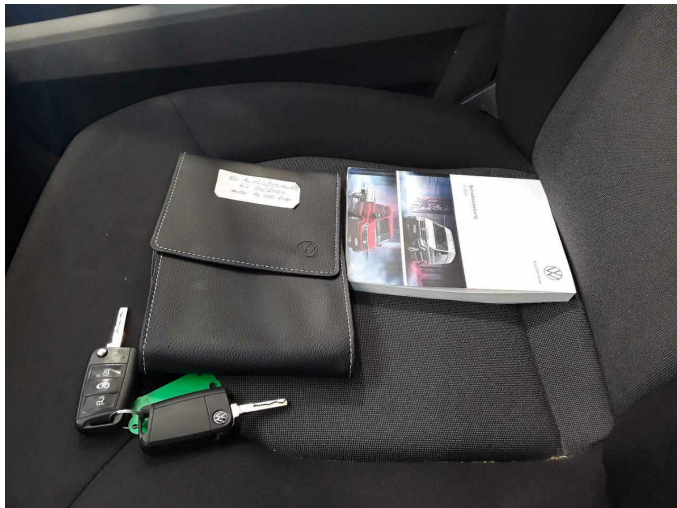


Figure 15: Documents



Figure 16: Additional tyres



Figure 17: Navigation

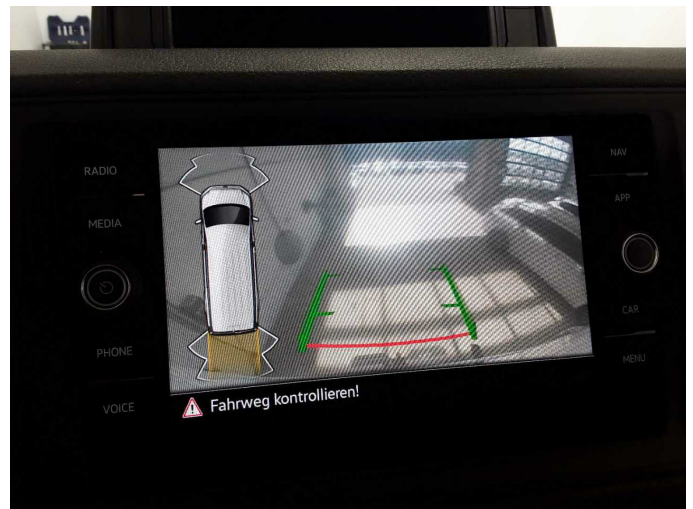


Figure 18: Misc.





Figure 19: Misc.



Figure 20: Misc.

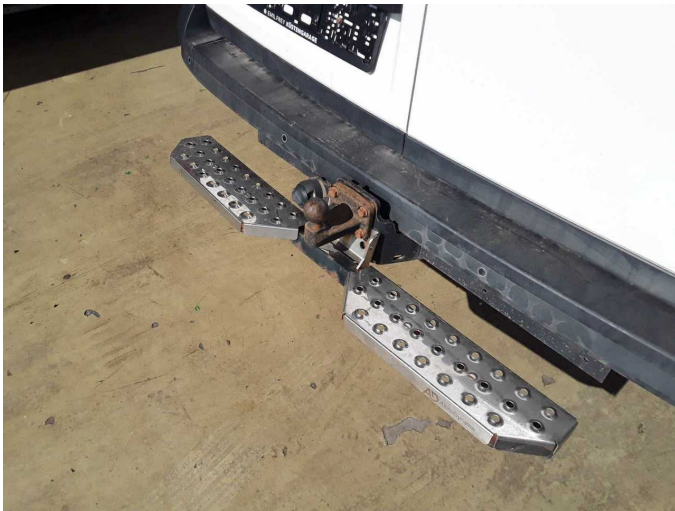


Figure 21: Misc.



Figure 22: Misc.



Figure 23: Misc.



Damage 1: Sliding door, right: Sliding door - dent(s) - Smart repair



**Damage 1:** Sliding door, right: Sliding door - dent(s) - Smart repair



**Damage 2:** Vehicle glazing: Windscreen - Damaged - Replace



**Damage 2:** Vehicle glazing: Windscreen - Damaged - Replace



**Repainting 1:** Side panel - rear right side



**Repainting 1:** Side panel - rear right side



# Wartungshistorie

(gemäß Auftraggeber Informationen)

Fahrgestellnummer: WV1ZZZSYZM9039898  
Hersteller / Modell: VOLKSWAGEN VW Crafter 35 TDI VA

Datum	KM-Stand	Beschreibung
16.06.2025	130.252	Motoröl b. Wartung; Ölfilter ern; Ölwechsel; Wartung Sonstiges
10.01.2025	113.742	Systemtest/Eigendiagnose
25.11.2024	110.955	Reparatur Sonstiges; Systemtest/Eigendiagnose
05.08.2024	101.145	Bremsbelagfühler ern; Bremse Sonstiges; Bremsklötze vorne; Brems scheiben vorne; Keilrippenriemen; Kraftstofffilter ern; Luftfiltereinsatz ern; Motoröl b. Wartung; Ölfilter ern; Regelwartungsdienst; Systemtest/ Eigendiagnose; Wartung Sonstiges; Zahnriemen/Steuerkett ern
07.06.2024	95.260	Bremsbelagfühler ern; Bremse Sonstiges; Bremsklötze hinten; Brems scheiben hinten
03.01.2024	74.551	Motoröl b. Wartung; Ölfilter ern; Ölwechsel; Wartung Sonstiges
10.07.2023	58.515	AU; Bremsflüssigkeit; Bremsflüssigkeit ern
23.01.2023	50.297	Bremse Sonstiges; Motoröl b. Wartung; Ölfilter ern; Regelwartungsdienst; Wartung Sonstiges
17.01.2023	49.574	Bremsbelagfühler ern; Bremse Sonstiges; Bremsklötze vorne; Brems scheiben vorne
31.03.2022	24.431	Motoröl b. Wartung; Ölfilter ern; Ölwechsel; Wartung Sonstiges