



Expertise

Protocol number: 41209143  
Order No. / Reference: 25101293  
Inspection date: 24 Aug 2025

Manufacturer: Volkswagen	Model: Crafter 35 TDI VA
VIN: WV1ZZZSYZM9030617	



Vehicle details	
Manufacturer / Type / Model / Equipment	
Volkswagen Crafter 35 TDI VA	
Vehicle Identification number	WV1ZZZSYZM9030617
Mileage (Read)	193,695 km
First registration	12 Apr 2021
Number of holders	1
Power / Engine displacement	103 kw / 1,968 ccm
Fuel type / Cylinder	Diesel / 4
Gearbox / Number of gears	Manual / 6
Type of drive	Front drive
Type of vehicle	Van
Colour / colour code	Candyweiß
Doors / Seats	4 / 2
Upholstery type	Cloth
Colour of upholstery	Black-Anthracite



## Vehicle details

<b>Maintenance booklet / proof</b>	digital proof / complete	<b>Next maintenance in</b>	6,600 km
<b>Last maintenance on / at</b>	08/2025 at 170,519 km		
<b>Key is / should be</b>	2 / 2	<b>FZG documents</b>	ZB#2 (B) was available (copy), ZB#1 (S) was not available
		<b>Letter No.</b>	GB811967
<b>Previous damage / Accident</b>	Detectable	<b>Repainting</b>	None detectable
<b>Inspection conditions</b>	sufficient	<b>Lifting equipment / pit</b>	yes
<b>Test drive</b>	Not performed	<b>Engine function test</b>	Performed
<b>Manufacturer key number/ type code number</b>	0603 / 000 000		
<b>Permitted total weight</b>	3,500 kg	<b>Empty weight</b>	

## Tyres

### Mounted tyres

#	Tyre size	Type of tyre	Manufacturer	Tread depth
1)	205/75 R16 113R	Winter tyres on Steel	Continental	9mm / 9mm
2)	205/75 R16 113R	Winter tyres on Steel	Continental	9mm / 9mm

### Additional tyres

#	Tyre size	Type of tyre	Manufacturer	Tread depth
1)	205/75 R16 113R	All-season tyres on Steel	Continental	2mm / 3mm
2)	205/75 R16 113R	All-season tyres on Steel	Continental	3mm / 4mm

### Replacement

Typ	Tyre size	Type of tyre	Manufacturer	Tread depth
E	205/75 R16 113R C	All-season tyres on Steel	Continental	8 mm

**Legend:** Tread depth information for tires on the left is in the first place, for tires on the right is in the second place on the axle in the direction of travel

## Equipment

### Standard equipment

- Airbag: Driver's side
- Exterior mirrors, adjustable from the outside
- Hill Start Assist
- Brake light, third
- Electronic Stabilization Program and ABS
- Electric windows, front
- Transmission: 6-speed transmission
- Rear wing door without window cutout
- High roof, exterior painted in body color
- Headrests (2)
- Steering wheel adjustable in height and reach
- Multifunction display "Plus"
- Upholstery: Seat covers in fabric, design "Austin"
- Wheels/Tires: 205/75 R 16 C 113/111, rolling resistance optimized
- Key for locking system: 2 radio folding keys
- Electromechanical power steering
- Seats 1st row: Right seat
- Power socket: 12 V socket and 4 cup holders in the dashboard
- Partition walls: Partition wall
- Lashing eyes for securing loads
- Thermal insulation glazing
- Accessories: Onboard tool kit
- Registration as a truck
- Exterior mirrors (left and right) convex, with integrated LED indicator and wide-angle range
- Floor coverings: Rubber floor covering in the driver's cab
- Three-point automatic seat belts
- Chassis: Suspension and damping, standard
- Total weight: Vehicle registration with a permissible total weight of 3.5 t
- Rear doors/tailgate: Hinges for rear doors
- Instrument use (km/h)
- Paint finish: Uni
- Headlight range adjustment
- Particle filter: Soot particle filter for diesel
- Wheel cover center
- Wheels: Steel wheels 6.5 J x 16, in silver
- Sliding door, right in the passenger/cargo area
- Crosswind Assist
- Seat belt check
- Start-stop system
- Sockets: 2 12 V sockets in the cab (in the control panel)
- Daytime running light
- First aid kit, warning triangle and safety vest
- Electronic immobilizer
- Central locking with radio remote control and interior operation

### Extra equipment

- Storage package 2: Roof gallery with two 1-DIN slots and reading light
- Trailer hitch, rigid (including trailer stabilization)
- Installation Sortimo
- Driver assistance systems: "Front Assist" environment monitoring system with City Emergency Braking function
- Floor mats: All-weather mats in the driver's cab (made of rubber)
- Heating: second heat exchanger (under the right seat box)
- Air conditioning in the driver's cab with electric control
- Marker lights, side
- Fog lights including cornering lights
- "Discover Media" radio navigation system including streaming and internet with 4 speakers (voice control - 2 USB ports (Type C) in the dashboard - glove compartment with lockable lid, illuminated - "Discover Media" radio navigation system with 20.3 cm (8-inch) touch display including streaming and internet - 4 speakers: 2 tweeters, 2 woofers - wired and wireless app connect - mobile phone interface)
- Seats 1st row: Suspension seat "ergoComfort" left, in the 1st row
- Auxiliary heaters/auxiliary heaters: Auxiliary water heater with programmable auxiliary heating function (with radio remote control)
- Airbag for driver and front passenger (with passenger airbag deactivation)
- Exterior mirrors electrically adjustable and heated
- Omission: Lettering on the rear (without lettering for type designation)
- Suspension/damping, reinforced and stabilization, reinforced
- Cruise control including speed limiter
- Instrument panel: Control panel with additional console (including 1 DIN slot and 4 additional switch positions)
- Fatigue detection
- ParkPilot in the front and rear areas
- Radio accessories: Digital radio reception DAB+
- Wheels, tires: All-season tires
- Wheels, tires: Spare wheel (steel rim) with driving tires as well as on-board tools and jack
- Rear view camera
- Hinges for rear doors with increased opening angle (270 °)
- Mud flaps, front and rear
- Seats 1st row: Comfort seat right, in the 1st row
- Auxiliary heaters/auxiliary heaters: Electric auxiliary air heater (1,400 W)



- Tachograph: Preparation Digital Tachograph (Smart TCO) (for retrofitting a tachograph from VDO or Intellic)
- bandages, warning triangle, safety vest and warning light

## Brief expert findings

Documents submitted	At the time of the inspection, the registration certificate Part 2 (letter) was available, but the registration certificate Part 1 (certificate) was not. (Copy)
VIN comparison	The vehicle identification number (VIN) was read from the vehicle and its conformity with the submitted documents was verified during the inspection by the undersigned.
Inspection	The inspection conditions were sufficient for the assessment of the vehicle. Lifting equipment and a pit were available for examining the vehicle.
Test drive	No test drive/maneuvering was carried out during the inspection of the vehicle.
Engine function test	An engine test run was performed.

## Value reducing factors

No.	Component group	Description
1	Misc.	Main inspection - No evidence - No deduction
2	Interior	Installations (Einbau Sortimo) - Differs from the original configuration - No deduction
3	Mudguard - left side	Mudguard - left side - dent(s) - Smooth repair work
4	Side panel - rear left side	Side panel - dent(s) - Smooth repair work
5	Door - front right side	Door - Deformed - Smart repair
6	Body	Body - Glued / labelled - De-glue / neutralise
7	2nd wheel set	3 tyres (Profil kleiner 4mm) - Replace
8	Seat - front	Seat cover - left side - Broken / torn - Replace

## Missing parts

### Description

Heating system - Remote control auxiliary heating

## Previous damages

No.	Previous damage	Extent of damage (Net)
1	Side - left, Side right, Provided by user / customer, from 24 Jan 2025	3.779,50 €

## Order/Scope of order

The order was placed to prepare a sales report for the vehicle described. This includes the following:

- Description of core relevant information about the vehicle
- Documentation of equipment features  
(Delivery by third-party service providers)
- Documentation of damage, defects, missing parts
- Documentation of previous damage, unrepaired previous damage, repainting
- a brief visual or functional inspection of the equipment details if possible.  
(Functional tests of driver assistance systems are not included in the scope of services!)
- a photo documentation of the vehicle



## Basis for the order

This product is based on the guidelines for vehicle returns and valuations of light commercial vehicles from Alphabet Fuhrparkmanagement GmbH. The expert makes the explicit findings in each individual case objectively within the framework of the specified standards based on his or her own expertise.

The vehicle inspection takes place in a disassembled state.

Damage or defects that can only be detected during disassembly/diagnosis work or through advanced knowledge remain within the scope of the prognosis risk. An extended risk exists for concealed defects caused by fraudulent deception and not identifiable by the expert.

Damage or defects resulting from normal use or wear and tear of the vehicle will be accepted according to the applicable standard.

There was no explicit identification or monetary consideration of the expected features within the product.

Features which in their nature and severity slightly exceed normal use but do not constitute unacceptable damage will be documented and identified under signs of use if necessary.

Damage or defects which, according to the underlying standard, can no longer be attributed to normal use or wear and tear are listed in the product under "Depreciating Factors".

Depending on the product specification, a monetary ID can be provided. If this takes place, the costs can be 100% d or pro rata depending on the vehicle's age and mileage.

## Previous damages

According to available information previous damages were repaired at the vehicle. Traces of repairs, which allow conclusions about the area of repair, were not recognizable during the inspection.





Figure 1: Diagonal front (left)



Figure 2: Diagonal front (right)



Figure 3: Diagonal rear (left)



Figure 4: Diagonal rear (right)



Figure 5: Interior - front



Figure 6: Interior - rear



Figure 7: Instrument cluster



Figure 8: Instrument panel



Figure 9: interior 360° view ([Online link](#))



Figure 10: Cargo area



Figure 11: VIN



Figure 12: Mounted tyres





Figure 13: Documents



Figure 14: Additional tyres



Figure 15: Navigation



Figure 16: Misc.



Figure 17: Misc.

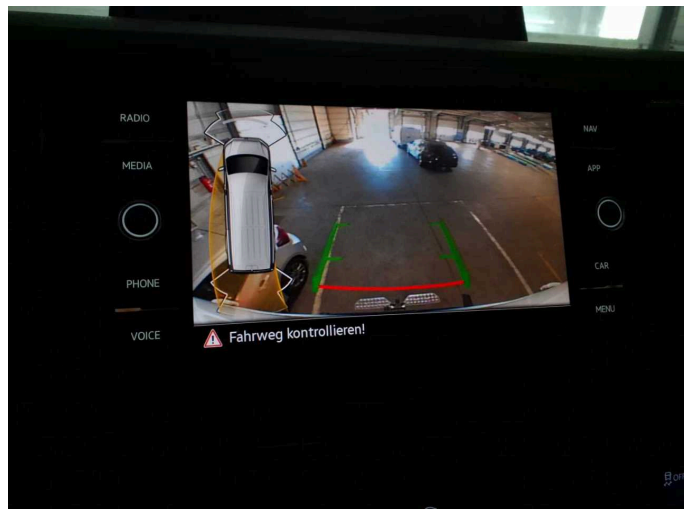


Figure 18: Misc.





Figure 19: Misc.



Figure 20: Misc.



Figure 21: Misc.



Figure 22: Misc.



Figure 23: Misc.



Figure 24: Misc.





Figure 25: Misc.



Figure 26: Misc.



Figure 27: Misc.

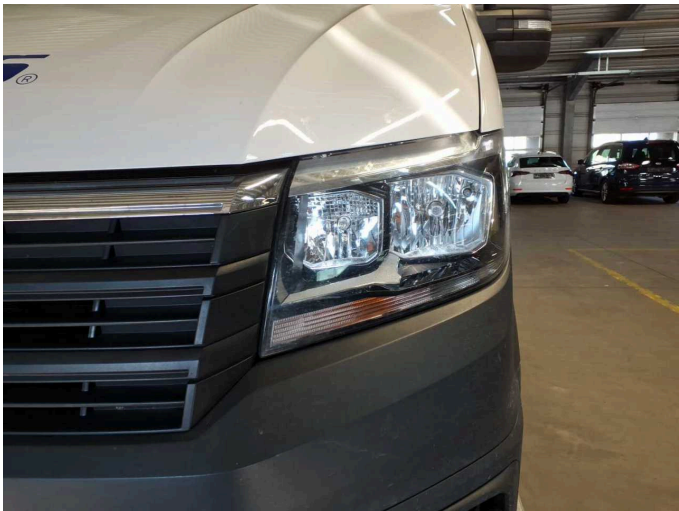


Figure 28: Misc.



Figure 29: Misc.

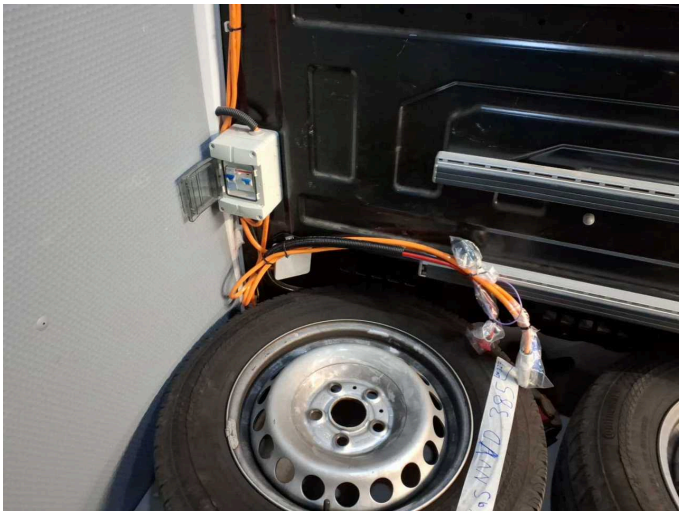


Figure 30: Misc.





Figure 31: Misc.



Figure 32: Misc.

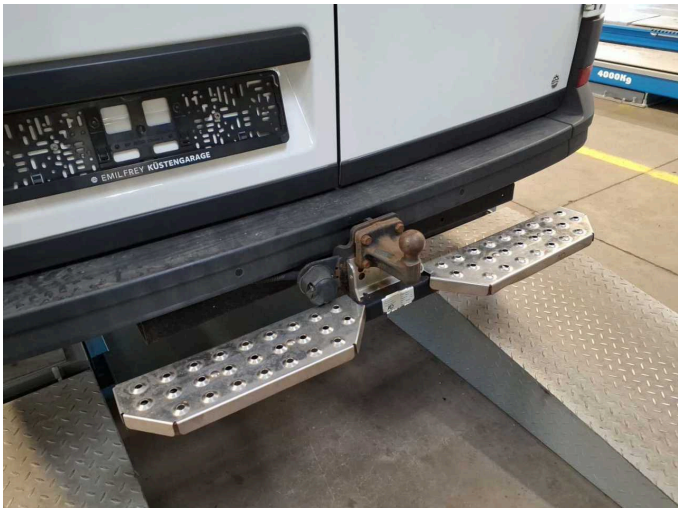


Figure 33: Misc.



Figure 34: Misc.



Figure 35: Misc.



Figure 36: Misc.

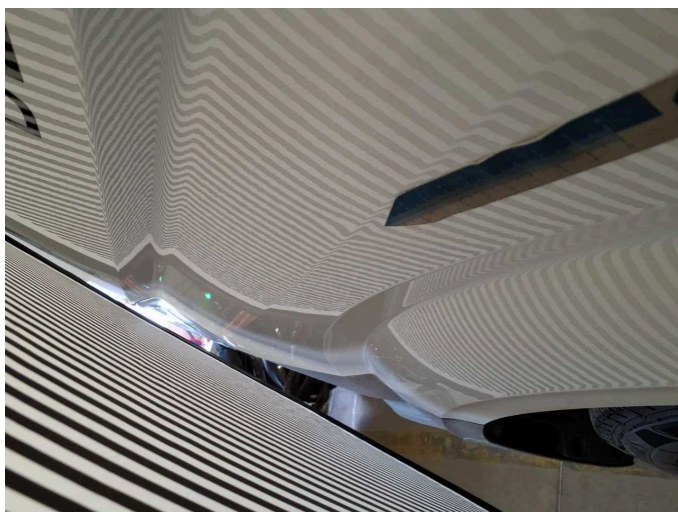




**Figure 37:** Misc.



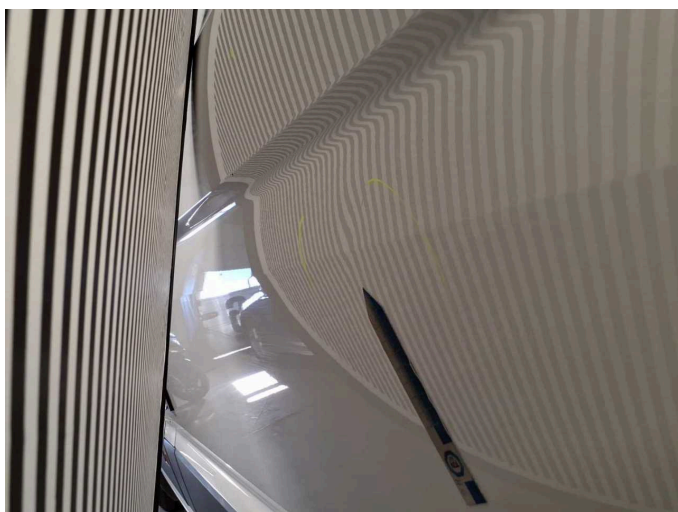
**Damage 3:** Mudguard - left side: Mudguard - left side - dent(s) - Smooth repair work



**Damage 3:** Mudguard - left side: Mudguard - left side - dent(s) - Smooth repair work



**Damage 4:** Side panel - rear left side: Side panel - dent(s) - Smooth repair work

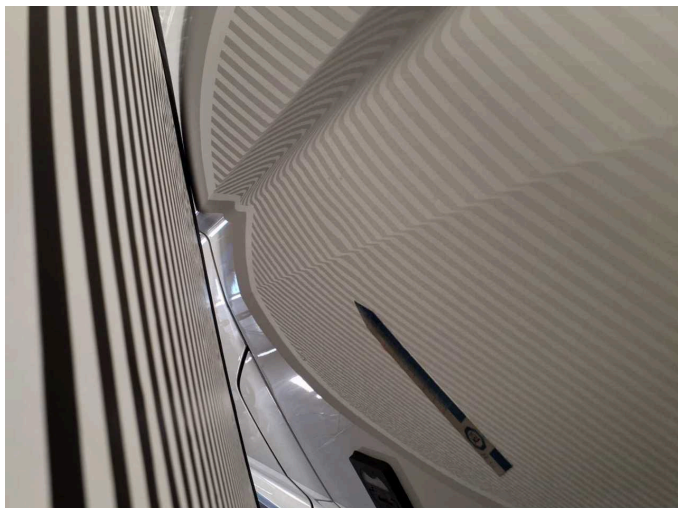


**Damage 4:** Side panel - rear left side: Side panel - dent(s) - Smooth repair work



**Damage 4:** Side panel - rear left side: Side panel - dent(s) - Smooth repair work

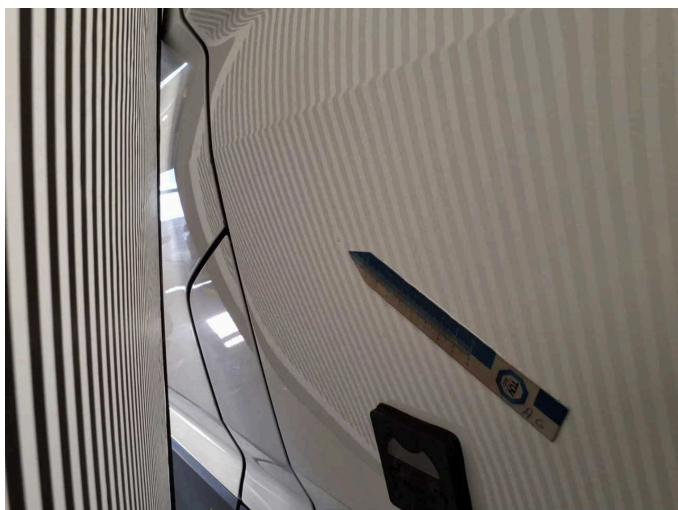




**Damage 4:** Side panel - rear left side: Side panel - dent(s) - Smooth repair work



**Damage 4:** Side panel - rear left side: Side panel - dent(s) - Smooth repair work



**Damage 4:** Side panel - rear left side: Side panel - dent(s) - Smooth repair work



**Damage 5:** Door - front right side: Door - Deformed - Smart repair



**Damage 5:** Door - front right side: Door - Deformed - Smart repair



**Damage 5:** Door - front right side: Door - Deformed - Smart repair

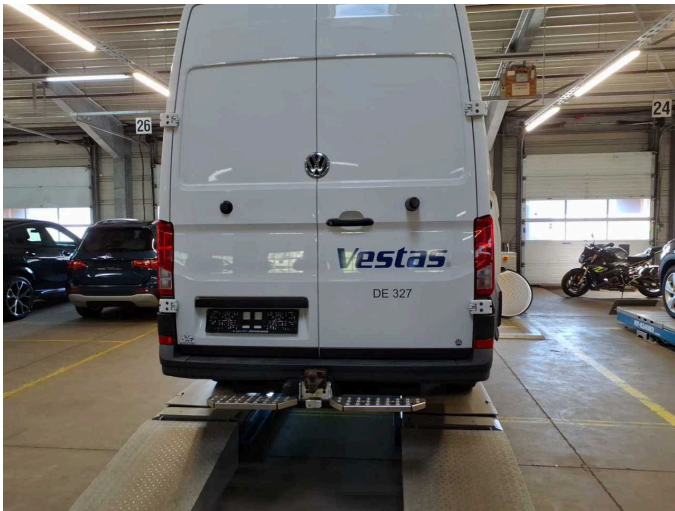




**Damage 6:** Body: Body - Glued / labelled - De-glue / neutralise



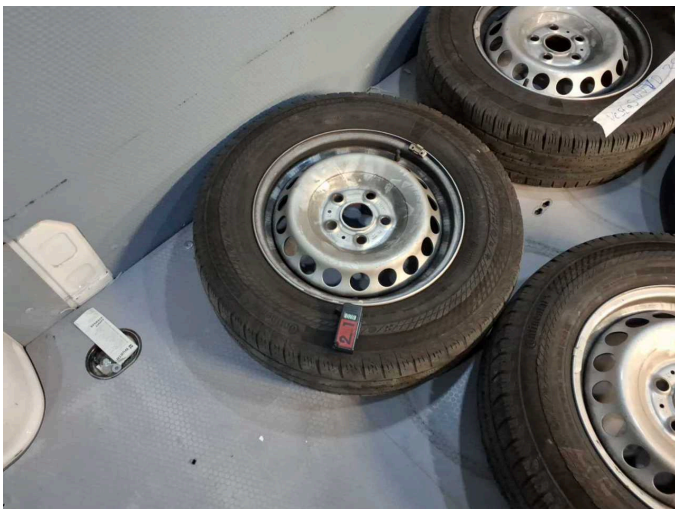
**Damage 6:** Body: Body - Glued / labelled - De-glue / neutralise



**Damage 6:** Body: Body - Glued / labelled - De-glue / neutralise



**Damage 6:** Body: Body - Glued / labelled - De-glue / neutralise

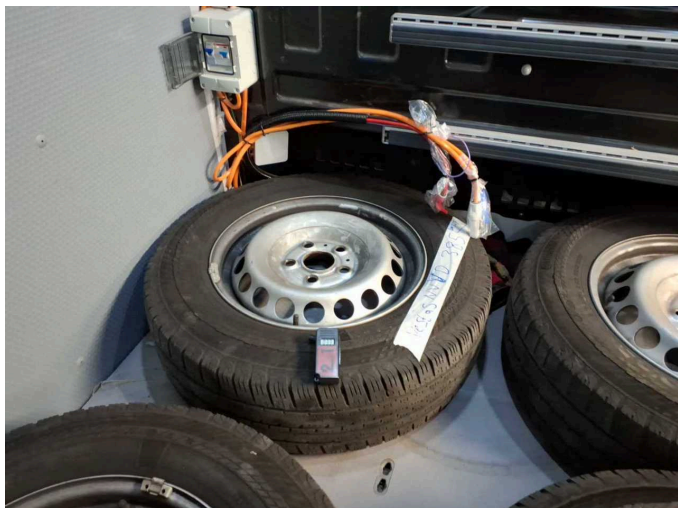


**Damage 7:** 2nd wheel set: 3 tyres (Profil kleiner 4mm) - Replace



**Damage 7:** 2nd wheel set: 3 tyres (Profil kleiner 4mm) - Replace





**Damage 7:** 2nd wheel set: 3 tyres (Profil kleiner 4mm) - Replace



**Damage 7:** 2nd wheel set: 3 tyres (Profil kleiner 4mm) - Replace



**Damage 7:** 2nd wheel set: 3 tyres (Profil kleiner 4mm) - Replace



**Damage 7:** 2nd wheel set: 3 tyres (Profil kleiner 4mm) - Replace



**Damage 8:** Seat - front: Seat cover - left side - Broken / torn - Replace



**Damage 8:** Seat - front: Seat cover - left side - Broken / torn - Replace



# Wartungshistorie

(gemäß Auftraggeber Informationen)

Fahrgestellnummer: WV1ZZZSYZM9030617  
Hersteller / Modell: VOLKSWAGEN VW Crafter 35 TDI VA

Datum	KM-Stand	Beschreibung
01.08.2025	193.256	Batterie ern; Bremsflüssigkeit; Bremsflüssigkeit ern; Kraftstofffilter ern; Ladeluftschlauch ern; Lichtmaschine ern/inst; Regelwartungsdienst; Reparatur Sonstiges; Systemtest/Eigendiagnose; Wartung Sonstiges
04.07.2025	181.883	Reparatur Sonstiges; Systemtest/Eigendiagnose; Wasserpumpe ern
12.05.2025	181.379	AU; Reparatur Sonstiges; Wartung Sonstiges
02.04.2025	170.519	Motoröl b. Wartung; Ölfilter ern; Ölwechsel; Wartung Sonstiges
07.03.2025	164.000	Batterie ern; Systemtest/Eigendiagnose
02.08.2024	141.981	Keilrippenriemen; Motoröl b. Wartung; Ölfilter ern; Regelwartungsdienst; Reparatur Sonstiges; Wartung Sonstiges; Wasserpumpe ern; Zahnriemen/Steuerkett ern
20.02.2024	117.455	Bremsbelagfühler ern; Bremsklötze hinten; Motoröl b. Wartung; Ölfilter ern; Ölwechsel; Reparatur Sonstiges; Systemtest/Eigendiagnose; Wartung Sonstiges
07.11.2023	100.319	Kraftstofffilter ern; Luftfiltereinsatz ern; Motoröl b. Wartung; Ölfilter ern; Regelwartungsdienst; Wartung Sonstiges
29.06.2023	83.577	Bremsbelagfühler ern; Bremse Sonstiges; Bremsflüssigkeit; Bremsflüssigkeit ern; Bremsklötze vorne; Bremsscheiben vorne; Motoröl b. Wartung; Ölfilter ern; Ölwechsel; Wartung Sonstiges; Zahnriemen/Steuerkett ern
11.04.2023	74.591	AU
16.01.2023	64.499	Motoröl b. Wartung; Ölfilter ern; Ölwechsel; Wartung Sonstiges
04.10.2022	47.824	Motoröl b. Wartung; Ölfilter ern; Regelwartungsdienst; Wartung Sonstiges
14.04.2022	23.899	Motoröl b. Wartung; Ölfilter ern; Ölwechsel; Wartung Sonstiges