



Expertise

Protocol number: 41601740  
Order No. / Reference: 25215330  
Inspection date: 11 Sept 2025

Manufacturer: Volkswagen

Model: Caddy Cargo 2.0 TDI BMT

VIN: WV1ZZZSKZNX007086



Vehicle details	
Manufacturer / Type / Model / Equipment	
Volkswagen Caddy Cargo 2.0 TDI BMT	
Vehicle Identification number	WV1ZZZSKZNX007086
Mileage (Read)	133,457 km
First registration	8 Oct 2021
Number of holders	1
Next periodical technical inspection	05/2026
(Report not on hand)	
Power / Engine displacement	75 kw / 1,968 ccm
Fuel type / Cylinder	Diesel / 4
Gearbox / Number of gears	Manual / 6
Type of drive	Front drive
Type of vehicle	Misc.
Colour / colour code	Reflexsilber metallic (A7W)
Doors / Seats	4 / 2
Upholstery type	Cloth
Colour of upholstery	Black-Anthracite
Re/Import	no



## Vehicle details

<b>Maintenance booklet / proof</b>	digital proof / complete	<b>Next maintenance in</b>	15,900 km
<b>Last maintenance on / at</b>	01/2025 at 119,272 km		
<b>Key is / should be</b>	2 / 2	<b>FZG documents</b>	ZB#2 (B) was available (copy), ZB#1 (S) was not available
		<b>Letter No.</b>	GF289698
<b>Previous damage / Accident</b>	None detectable	<b>Repainting</b>	None detectable
<b>Inspection conditions</b>	sufficient	<b>Lifting equipment / pit</b>	yes
<b>Test drive</b>	Not performed	<b>Engine function test</b>	Performed
<b>Manufacturer key number/ type code number</b>	0603 / CMF 00101		
<b>Emission standard</b>	EURO6;WLTP;AQ;PI/CI; N1 II	<b>Fine dust sticker</b>	
<b>Permitted total weight</b>	2,220 kg	<b>Empty weight</b>	

## Tyres

### Mounted tyres

#	Tyre size	Type of tyre	Manufacturer	Tread depth
1)	205/60 R16 96V	Summer tyres on Steel	Pirelli	4mm / 4mm
2)	205/60 R16 96V	Summer tyres on Steel	Pirelli	7mm / 7mm

### Additional tyres

#	Tyre size	Type of tyre	Manufacturer	Tread depth
1)	205/60 R16 96H	Winter tyres on Steel	Pirelli	5mm / 5mm
2)	205/60 R16 96H	Winter tyres on Steel	Pirelli	7mm / 7mm

### Replacement

Typ	Tyre size	Type of tyre	Manufacturer	Tread depth
	Tirefit	Expiration date 06/2025		

**Legend:** Tread depth information for tires on the left is in the first place, for tires on the right is in the second place on the axle in the direction of travel

## Equipment

### Standard equipment

- Shelves
- Towing eye front and rear, screw-in
- Exterior mirrors: electrically adjustable
- Reinforced battery (70 Ah/ 420 A)
- Operating voltage 12 V
- Brake booster
- Cockpit cover matt
- Three-phase generator 140 A
- Electronic parking brake including auto-hold function
- Automatic headlight switching with daytime running lights
- Electric windows, front
- Transmission: 6-speed transmission
- Rear wing door (asymmetrically divided) without window cutout
- Instrument use (km/h)
- Headlight range adjustment
- Multifunction display: 16.51 cm (6.5 inch) touch color display for convenient operation
- Non-smoking version
- Particle filter: Soot particle filter for diesel
- Wheels, tires: Wheel covers
- Wheels/Tires: Steel wheels 6J x 15, in black
- taillights
- Windscreen wiper interval control with light sensor
- Key for locking system: 2 radio folding keys
- Side indicators
- Seats: Height adjustment for left seat, manual
- Sun visors without mirrors with ticket pocket on driver's side plus airbag label on the sun visor
- Tire Mobility Set
- First aid kit, warning triangle and safety vest
- Warning sound and light for unfastened front seat belts
- Green thermal insulation glazing
- Storage compartments: glove compartment open
- Airbag for driver and front passenger
- Exterior mirror housings and door handles in black, sliding door rail in silver
- Floor coverings: Carpeted flooring in the driver's cab
- Brake light, third
- Roof rail/roof rack preparation
- Three-point automatic seat belts
- ESP Electronic Stability Program with Brake Assist
- Windows: Laminated glass windscreen with thermal insulation glazing
- Halogen double headlights-H7
- Heating with electronic control
- Interior lighting in the cargo area
- Steering column adjustable in height and tilt
- Center console with 2 universal cup holders
- Multi-collision brake
- Fatigue detection
- eCall emergency call system
- Upholstery: fabric, design "Double Grid"
- Wheels/Tires: 205/65 R 15 99 H XL, rolling resistance optimized
- Gear lever in plastic
- Sliding door, right in the passenger/cargo area
- Side panels standard in the cargo area
- Power steering, speed-dependent (Servotronic)
- Seats: Left and right seats, in the 1st row
- Start-stop system
- Bumper in gray
- Partition wall (high) without window
- Lashing eyes: 6 lashing eyes for securing loads
- Electronic immobilizer
- Central locking with radio remote control and interior operation

### Extra equipment

- Airbag, side and head airbags for driver and front passenger
- Exterior mirror housings in black, door handles in body color and sliding door rail in silver
- Interior lighting in the cargo area, 2 LED spotlights
- Paint finish: metallic
- "Discover Media" navigation system (25.4 cm (10-inch) touchscreen color display - streaming & internet - 2 USB ports (Type C) in the front center console - illuminated glove compartment with lockable flap - 4 speakers - mobile phone interface)
- Radio accessories: Digital radio reception DAB+
- Wheels/Tires: Steel wheels 6.5J x 16, in black
- Seats: Lumbar supports manually adjustable, left
- Phone: Mobile phone interface
- Trailer hitch, rigid (including trailer stabilization)
- Exterior mirrors electrically adjustable and heated
- lettering
- Floor coverings, rubber flooring in the cargo area
- Air conditioning
- Multifunction display "Plus"



- Underrun protection (for engine and transmission made of plastic)
- Package: Special offer packages - Comfort package (air conditioning - refrigerant R1234yf - multifunction steering wheel - backrest release for right front seat - manual height adjustment for both front seats - armrest for left front seat - back panel on the backrest of the passenger seat (operated by the driver) - glove compartment with lockable flap, illuminated - storage tray on the roof lining with 2 roof grab handles in the driver's cab - LED interior lighting in the cargo area, 2 spotlights - operating voltage 12 V with 230 V socket (Schuko))

### Brief expert findings

Documents submitted	At the time of the inspection, the registration certificate Part 2 (letter) was available, but the registration certificate Part 1 (certificate) was not. (Copy)
VIN comparison	The vehicle identification number (VIN) was read from the vehicle and its conformity with the submitted documents was verified during the inspection by the undersigned.
Inspection	The inspection conditions were sufficient for the assessment of the vehicle. Lifting equipment and a pit were available for examining the vehicle.
Test drive	No test drive/maneuvering was carried out during the inspection of the vehicle.
Engine function test	An engine test run was performed.

### Value reducing factors

No.	Component group	Description
1	Equipment	Tirefit filler - Expired - Replace
2	Boot lid / rear door	Rear door - right side (Verkleidung) - Broken / torn - Replace
3	Door - front left side	Door - Scratch(es) - Smart repair
4	Sliding door, right	Sliding door - Dent / paintcoat damage - Smart repair
5	Vehicle glazing	Windscreen - Broken / torn - Replace

### Wear and tear

No.	Component group	Description
1	Bonnet	Bonnet - Stone chips - No deduction
2	Roof	Roof - Stone chips - No deduction

The vehicle shows signs of wear commensurate with its age and use.

### Order/Scope of order

The order was placed to prepare a sales report for the vehicle described. This includes the following:

- Description of core relevant information about the vehicle
- Documentation of equipment features  
(Delivery by third-party service providers)
- Documentation of damage, defects, missing parts
- Documentation of previous damage, unrepaired previous damage, repainting
- a brief visual or functional inspection of the equipment details if possible.  
(Functional tests of driver assistance systems are not included in the scope of services!)
- a photo documentation of the vehicle



## Basis for the order

This product is based on the Alphabet Fuhrpark GmbH guidelines for vehicle returns and valuations. The expert makes the explicit findings in each individual case objectively within the framework of the specified standards based on his or her own expertise.

The vehicle inspection takes place in a disassembled state.

Damage or defects that can only be detected during disassembly/diagnosis work or through advanced knowledge remain within the scope of the prognosis risk. An extended risk exists for concealed defects caused by fraudulent deception and not identifiable by the expert.

Damage or defects resulting from normal use or wear and tear of the vehicle will be accepted according to the applicable standard.

There was no explicit identification or monetary consideration of the expected features within the product.

Features which in their nature and severity slightly exceed normal use but do not constitute unacceptable damage will be documented and identified under signs of use if necessary.

Damage or defects which, according to the underlying standard, can no longer be attributed to normal use or wear and tear are listed in the product under "Depreciating Factors".

Depending on the product specification, a monetary ID can be provided. If this takes place, the costs can be 100% d or pro rata depending on the vehicle's age and mileage.

## Previous damages

Apparently, no repaired previous damage could be found on the vehicle.

## Comments

- Winterradsatz ist kein Bestandteil des Auslieferumfangs.





**Figure 1:** Diagonal front (left)



**Figure 2:** Diagonal front (right)



**Figure 3:** Diagonal rear (left)



**Figure 4:** Diagonal rear (right)



**Figure 5:** Interior - front



**Figure 6:** Interior - rear



Figure 7: Instrument cluster



Figure 8: Instrument panel



Figure 9: Interior 360° view ([Online link](#))



Figure 10: Cargo area



Figure 11: VIN



Figure 12: Mounted tyres





Figure 13: Documents



Figure 14: Additional tyres



Figure 15: Navigation



Figure 16: Misc.

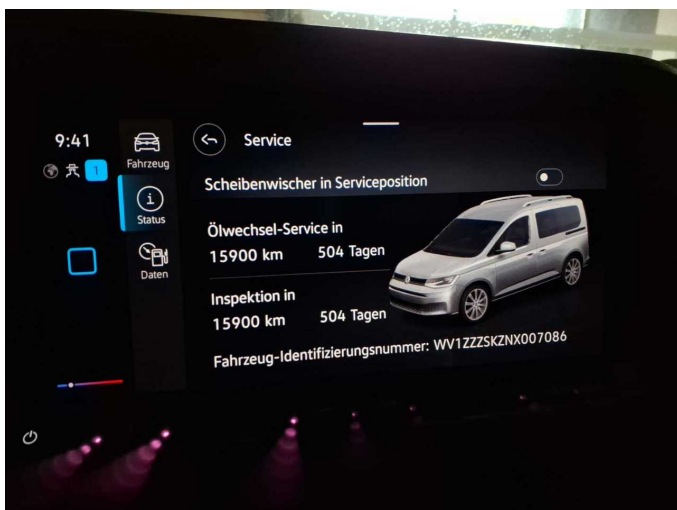


Figure 17: Misc.



Figure 18: Misc.





Figure 19: Misc.



Figure 20: Misc.



Figure 21: Misc.



Figure 22: Misc.



Figure 23: Misc.



Figure 24: Misc.



Figure 25: Misc.



Figure 26: Misc.



Figure 27: Misc.



Figure 28: Misc.

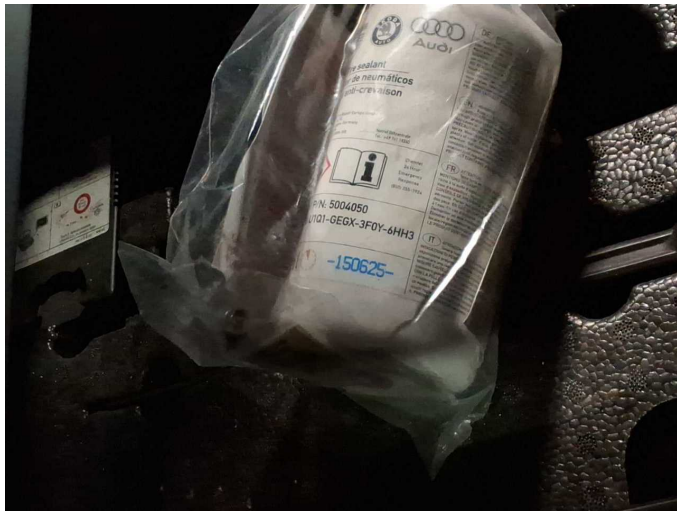


Figure 29: Misc.

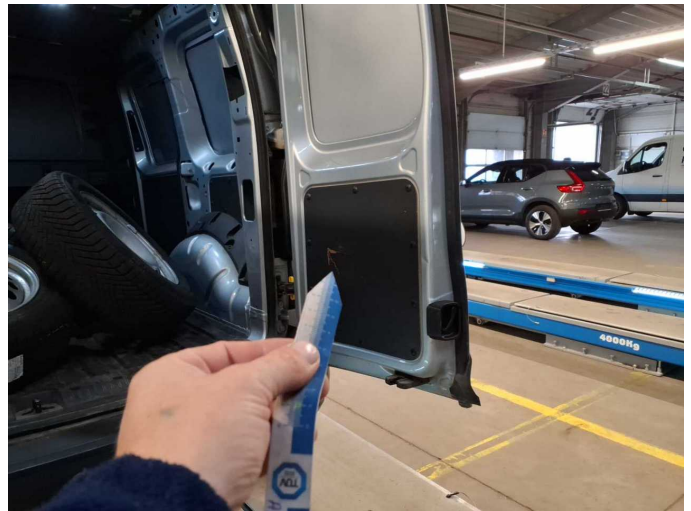


Figure 30: Misc.





**Damage 1:** Equipment: Tirefit filler - Expired - Replace



**Damage 2:** Boot lid / rear door: Rear door - right side (Verkleidung) - Broken / torn - Replace



**Damage 2:** Boot lid / rear door: Rear door - right side (Verkleidung) - Broken / torn - Replace



**Damage 3:** Door - front left side: Door - Scratch(es) - Smart repair



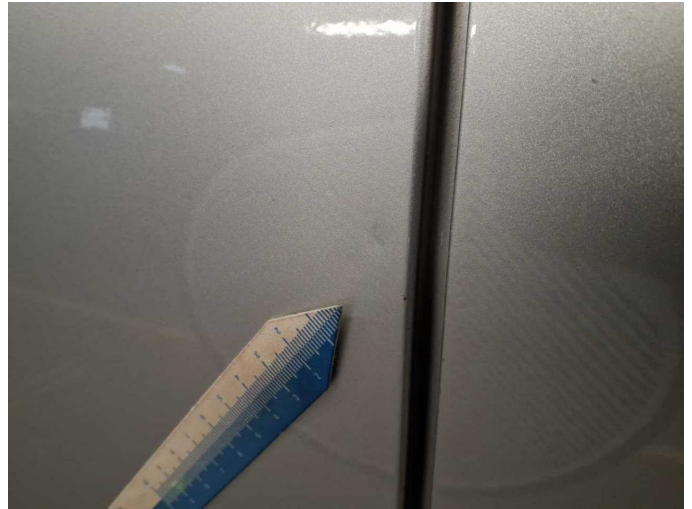
**Damage 3:** Door - front left side: Door - Scratch(es) - Smart repair



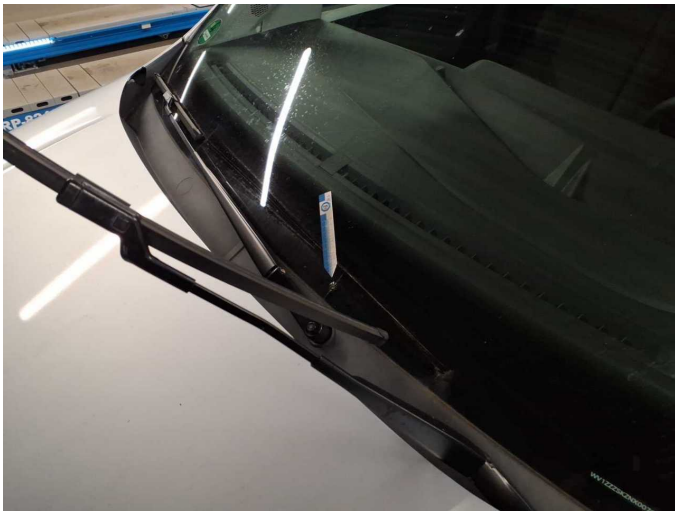
**Damage 4:** Sliding door, right: Sliding door - Dent / paintcoat damage - Smart repair



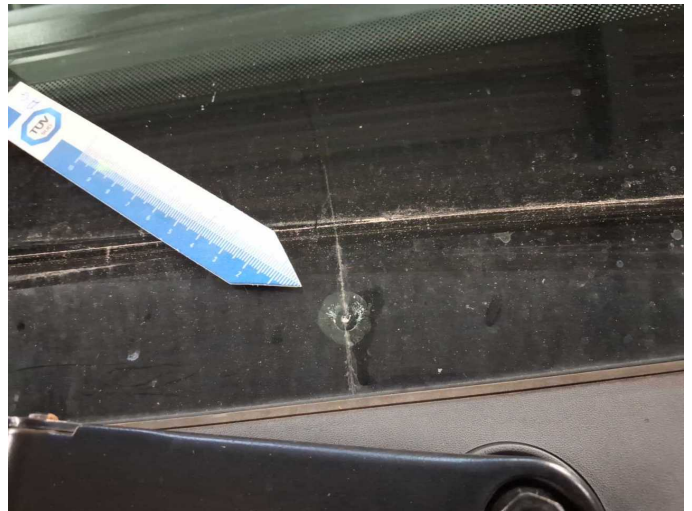
**Damage 4:** Sliding door, right: Sliding door - Dent / paintcoat damage - Smart repair



**Damage 4:** Sliding door, right: Sliding door - Dent / paintcoat damage - Smart repair



**Damage 5:** Vehicle glazing: Windscreen - Broken / torn - Replace



**Damage 5:** Vehicle glazing: Windscreen - Broken / torn - Replace





# Wartungshistorie

(gemäß Auftraggeber Informationen)

Fahrgestellnummer: WV1ZZZSKZNX007086  
Hersteller / Modell: VOLKSWAGEN VW Caddy Cargo 2.0 TDI BMT

Datum	KM-Stand	Beschreibung
30.01.2025	119.272	Kraftstofffilter ern; Motoröl b. Wartung; Ölfilter ern; Regelwartungsdienst; Systemtest/Eigendiagnose; Wartung Sonstiges
03.05.2024	93.027	AU
13.02.2024	90.124	AU; Bremse Sonstiges; Bremsflüssigkeit; Bremsflüssigkeit ern; Bremsklötze hinten; Bremsklötze vorne; Bremsscheiben hinten; Bremsscheiben vorne; Luftfiltereinsatz ern; Motoröl b. Wartung; Ölfilter ern; Regelwartungsdienst; Reparatur Sonstiges; Systemtest/Eigendiagnose; Wartung Sonstiges
24.03.2023	61.000	Motoröl b. Wartung; Regelwartungsdienst
04.08.2022	29.807	Motoröl b. Wartung; Ölfilter ern; Regelwartungsdienst; Wartung Sonstiges