



Expertise

Protocol number: 40614436
Order No. / Reference: 24946253
Inspection date: 16 Jul 2025

Manufacturer: Volkswagen	Model: Caddy Cargo 2.0 TDI BMT
VIN: WV1ZZZSKZNX007086	



Vehicle details	
Manufacturer / Type / Model / Equipment	
Volkswagen Caddy Cargo 2.0 TDI BMT	
Vehicle Identification number	WV1ZZZSKZNX007086
Mileage (Read)	133,443 km
First registration	8 Oct 2021
Number of holders	1
Next periodical technical inspection	05/2026 (Report not on hand)
Power / Engine displacement	75 kw / 1,968 ccm
Fuel type / Cylinder	Diesel / 4
Gearbox / Number of gears	Manual / 6
Type of drive	Front drive
Type of vehicle	Misc.
Colour / colour code	Reflexsilber metallic (A7W)
Doors / Seats	4 / 2
Upholstery type	Cloth
Colour of upholstery	Black-Anthracite
Re/Import	no
Driving readiness	Roadworthy



Vehicle details

Maintenance booklet / proof	digital proof / complete	Next maintenance in	15,900 km
Last maintenance on / at	01/2025 at 119,272 km		
Key is / should be	2 / 2	FZG documents	ZB#2 (B) was available (copy), ZB#1 (S) was not available
		Letter No.	GF289698
Previous damage / Accident	None detectable	Repainting	None detectable
Inspection conditions	Sufficient	Lifting equipment / pit	yes
Test drive	Not performed	Engine function test	Performed
Driving readiness	Roadworthy		
Manufacturer key number/ type code number	0603 / CMF 00101		
Emission standard	EURO6;WLTP;AQ;PI/CI; N1 II	Fine dust sticker	
Permitted total weight	2,220 kg	Empty weight	

Tyres

Mounted tyres

#	Tyre size	Type of tyre	Manufacturer	Tread depth
1)	205/60 R16 96V	Summer tyres on Steel	Pirelli	4mm / 4mm
2)	205/60 R16 96V	Summer tyres on Steel	Pirelli	7mm / 7mm

Additional tyres

#	Tyre size	Type of tyre	Manufacturer	Tread depth
1)	205/60 R16 96H	Winter tyres on Steel	Pirelli	5mm / 5mm
2)	205/60 R16 96H	Winter tyres on Steel	Pirelli	7mm / 7mm

Replacement

Typ	Tyre size	Type of tyre	Manufacturer	Tread depth
	Tirefit	Expiration date 06/2025		

Legend: Tread depth information for tires on the left is in the first place, for tires on the right is in the second place on the axle in the direction of travel

Equipment

Standard equipment

- Shelves
- Towing eye front and rear, screw-in
- Exterior mirrors: electrically adjustable
- Reinforced battery (70 Ah/ 420 A)
- Operating voltage 12 V
- Brake booster
- Cockpit cover matt
- Three-phase generator 140 A
- Electronic parking brake including auto-hold function
- Automatic headlight switching with daytime running lights
- Electric windows, front
- Transmission: 6-speed transmission
- Rear wing door (asymmetrically divided) without window cutout
- Instrument use (km/h)
- Headlight range adjustment
- Multifunction display: 16.51 cm (6.5 inch) touch color display for convenient operation
- Non-smoking version
- Particle filter: Soot particle filter for diesel
- Wheels, tires: wheel covers
- Wheels/Tires: Steel wheels 6J x 15, in black
- taillights
- Windscreen wiper interval control with light sensor
- Key for locking system: 2 radio folding keys
- Side indicators
- Seats: Height adjustment for left seat, manual
- Sun visors without mirrors with ticket pocket on driver's side plus airbag label on the sun visor
- Tire Mobility Set
- First aid kit, warning triangle and safety vest
- Warning sound and light for unfastened front seat belts
- Green thermal insulation glazing
- Storage compartments: glove compartment open
- Airbag for driver and front passenger
- Exterior mirror housings and door handles in black, sliding door rail in silver
- Floor coverings: Carpet flooring in the driver's cab
- Brake light, third
- Roof rail/roof rack preparation
- Three-point automatic seat belts
- ESP Electronic Stability Program with Brake Assist
- Windows: Laminated glass front window with thermal insulation glazing
- halogen double headlights-H7
- heating with electronic control
- interior lighting in the cargo area
- Steering column adjustable in height and tilt
- Center console with 2 universal cup holders
- Multi-collision brake
- Fatigue detection
- eCall emergency call system
- Upholstery: fabric, design "Double Grid"
- Wheels/Tires: 205/65 R 15 99 H XL, rolling resistance optimized
- Gear lever in plastic
- Sliding door, right in the passenger/cargo area
- Side panels standard in the cargo area
- Power steering, speed-dependent (Servotronic)
- Seats: Left and right seats, in the 1st row
- Start-stop system
- Bumper in gray
- Partition wall (high) without window
- Lashing eyes: 6 lashing eyes for securing loads
- Electronic immobilizer
- Central locking with radio remote control and interior operation

Extra equipment

- Airbag, side and head airbags for driver and front passenger
- Exterior mirror housings in black, door handles in body color and sliding door rail in silver
- Interior lighting in the cargo area, 2 LED spotlights
- Paint finish: metallic
- Navigation system "Discover Media" (25.4 cm (10 inch) touch color display - streaming & internet - 2 USB ports (type C) in the center console, front - glove compartment with lockable flap, illuminated - 4 speakers - mobile phone interface)
- Radio accessories: Digital radio reception DAB+
- Wheels/Tires: Steel wheels 6.5J x 16, in black
- Seats: Lumbar supports manually adjustable, left
- Phone: Mobile phone interface
- Trailer hitch, rigid (including trailer stabilization)
- Exterior mirrors electrically adjustable and heated
- lettering
- Floor coverings, rubber floor covering in the cargo area
- Air conditioning
- Multifunction display "Plus"



- Underrun protection (for engine and transmission made of plastic)
- Package: Promotional packages - Comfort package (air conditioning - refrigerant R1234yf - multifunction steering wheel - backrest release for right front seat - height adjustment for both front seats, manual - armrest for left front seat - back panel on the backrest of the passenger seat (operable by the driver) - glove compartment with lockable flap, illuminated - storage tray on the roof liner with 2 roof grab handles in the driver's cab - LED interior lighting in the cargo area, 2 spotlights - operating voltage 12 V with 230 V socket (Schuko))

Brief expert findings

Documents submitted	At the time of the inspection, the registration certificate Part 2 (letter) was available, but the registration certificate Part 1 (certificate) was not. (Copy)
VIN comparison	The vehicle identification number (VIN) was read and the undersigned verified that it matched the documents submitted during the inspection.
Inspection	The inspection conditions were sufficient for the assessment of the vehicle. Lifting equipment and a pit were available for examining the vehicle.
Test drive	No test drive/maneuvering was carried out during the inspection of the vehicle.
Engine function test	An engine test run was performed.
Driving readiness	The vehicle was drivable at the time of inspection.

Value reducing factors

No.	Component group	Description
1	Equipment	Tirefit filler - Expired - Replace
2	Boot lid / rear door	Rear door - right side (Verkleidung) - Broken / torn - Replace
3	Door - front left side	Door - Scratch(es) - Smart repair
4	Sliding door, right	Sliding door - Dent / paintcoat damage - Smart repair
5	Vehicle glazing	Windscreen - Broken / torn - Replace

Wear and tear

No.	Component group	Description
1	Bonnet	Bonnet - Stone chips - No deduction
2	Roof	Roof - Stone chips - No deduction

The vehicle shows signs of wear commensurate with its age and use.

Order/Scope of order

The order was placed to prepare a sales report for the vehicle described. This includes the following:

- Description of core relevant information about the vehicle
- Documentation of equipment features
(Delivery by third-party service providers)
- Documentation of damage, defects, missing parts
- Documentation of previous damage, unrepaired previous damage, repainting
- a brief visual or functional inspection of the equipment details if possible.
(Functional tests of driver assistance systems are not included in the scope of services!)
- a photo documentation of the vehicle



Basis for the order

This product is based on the Alphabet Fuhrpark GmbH guidelines for vehicle returns and valuations. The expert makes the explicit findings in each individual case objectively within the framework of the specified standards based on his or her own expertise.

The vehicle inspection takes place in a disassembled state.

Damage or defects that can only be detected during disassembly/diagnosis work or through advanced knowledge remain within the scope of the prognosis risk. An extended risk exists for concealed defects caused by fraudulent deception and not identifiable by the expert.

Damage or defects resulting from normal use or wear and tear of the vehicle will be accepted according to the applicable standard.

There was no explicit identification or monetary consideration of the expected features within the product.

Features which in their nature and severity slightly exceed normal use but do not constitute unacceptable damage will be documented and identified under signs of use if necessary.

Damage or defects which, according to the underlying standard, can no longer be attributed to normal use or wear and tear are listed in the product under "Depreciating Factors".

Depending on the product specification, a monetary ID can be provided. If this takes place, the costs can be 100% d or pro rata depending on the vehicle's age and mileage.

Previous damages

Apparently, no repaired previous damage could be found on the vehicle.

Comments

- Winterradsatz ist kein Bestandteil des Auslieferumfangs.



Figure 1: Diagonal front (left)



Figure 2: Diagonal front (right)



Figure 3: Diagonal rear (left)



Figure 4: Diagonal rear (right)



Figure 5: Interior - front



Figure 6: Interior - rear



Figure 7: Instrument cluster



Figure 8: Instrument panel



Figure 9: interior 360° view ([Online link](#))



Figure 10: Cargo area



Figure 11: VIN



Figure 12: Mounted tyres



Figure 13: Documents



Figure 14: Additional tyres



Figure 15: Navigation



Figure 16: Misc.



Figure 17: Misc.



Figure 18: Misc.



Figure 19: Misc.



Figure 20: Misc.

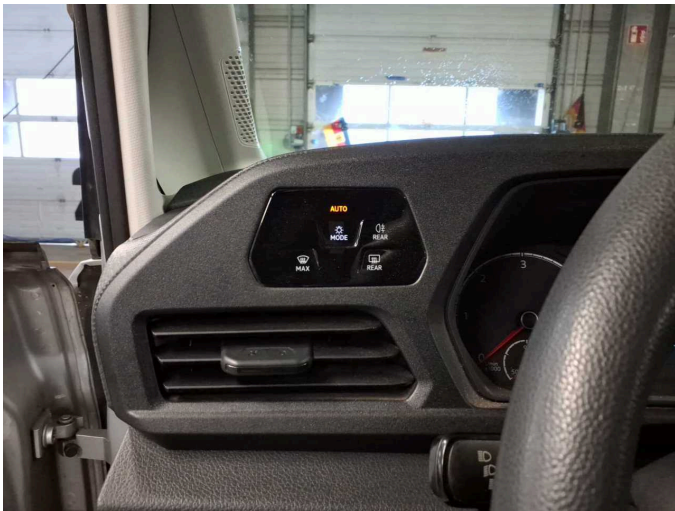


Figure 21: Misc.



Figure 22: Misc.



Figure 23: Misc.



Figure 24: Misc.



Figure 25: Misc.



Figure 26: Misc.

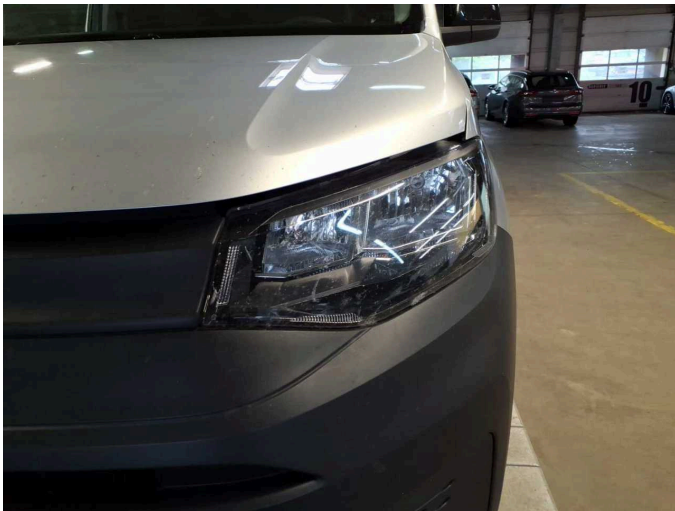


Figure 27: Misc.



Figure 28: Misc.

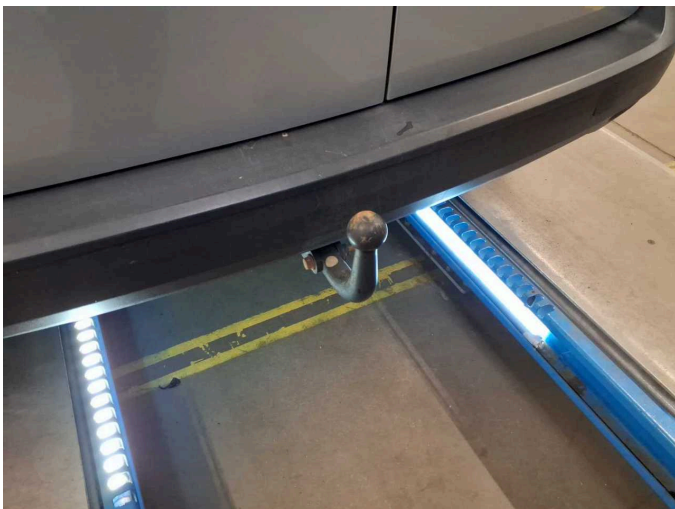


Figure 29: Misc.



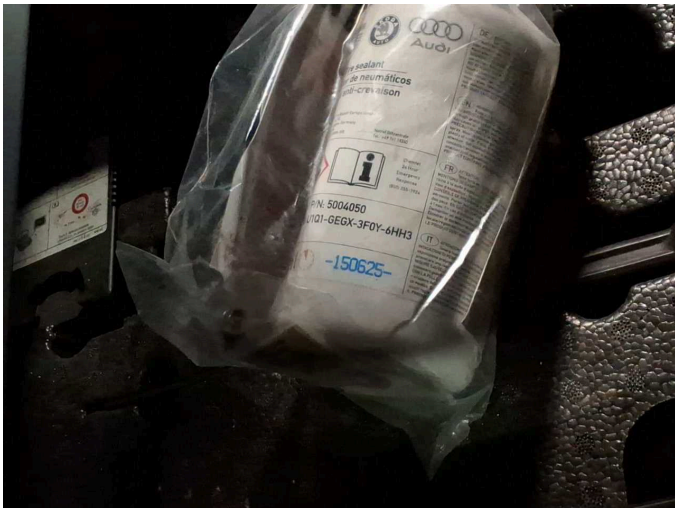
Figure 30: Misc.



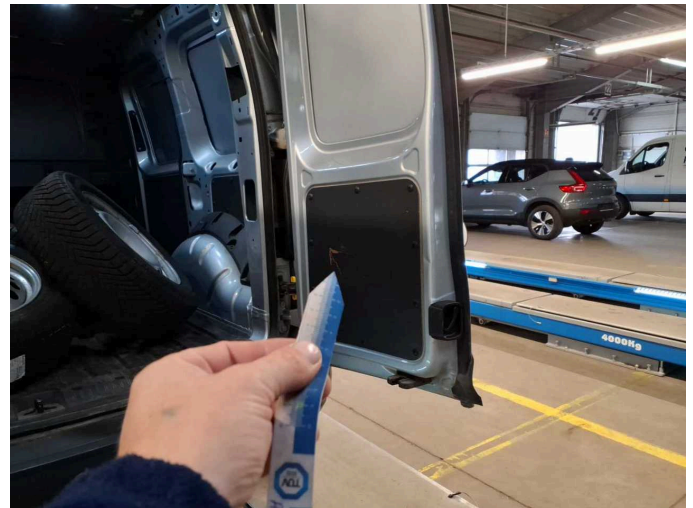
Figure 31: Misc.



Figure 32: Misc.



Damage 1: Equipment: Tirefit filler - Expired - Replace



Damage 2: Boot lid / rear door: Rear door - right side (Verkleidung) - Broken / torn - Replace



Damage 2: Boot lid / rear door: Rear door - right side (Verkleidung) - Broken / torn - Replace



Damage 3: Door - front left side: Door - Scratch(es) - Smart repair



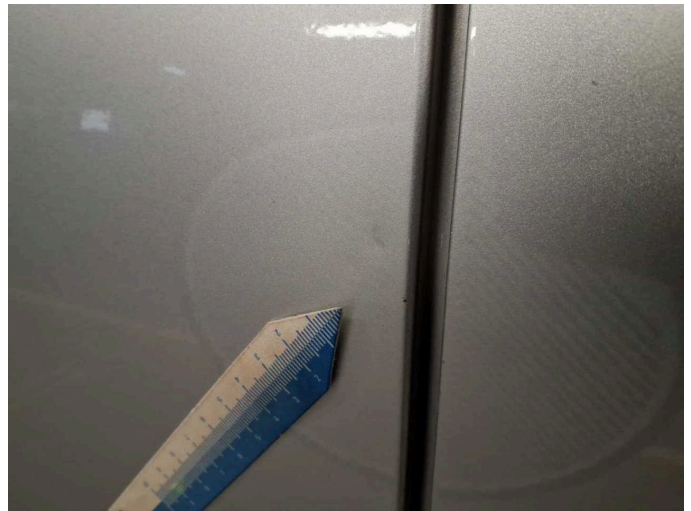
Damage 3: Door - front left side: Door - Scratch(es) - Smart repair



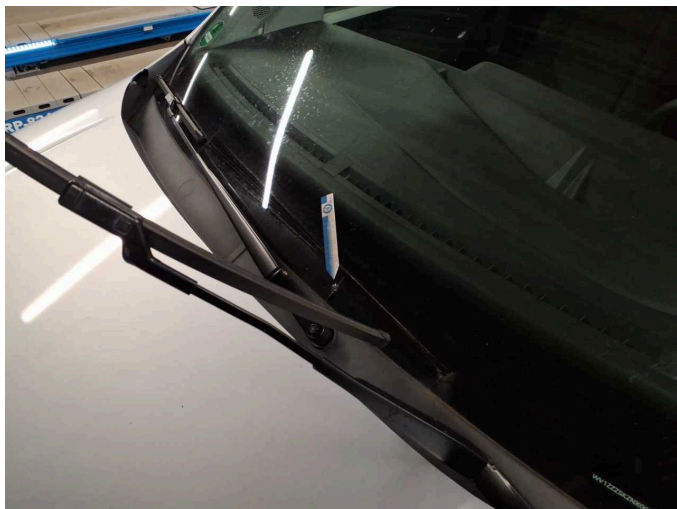
Damage 4: Sliding door, right: Sliding door - Dent / paintcoat damage - Smart repair



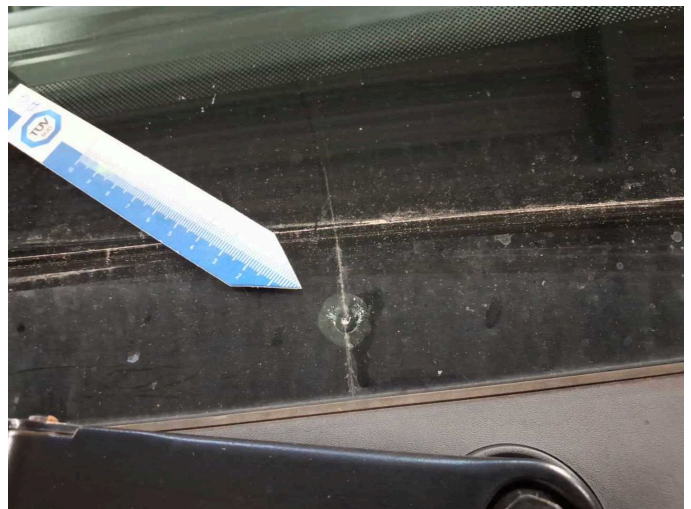
Damage 4: Sliding door, right: Sliding door - Dent / paintcoat damage - Smart repair



Damage 4: Sliding door, right: Sliding door - Dent / paintcoat damage - Smart repair



Damage 5: Vehicle glazing: Windscreen - Broken / torn - Replace



Damage 5: Vehicle glazing: Windscreen - Broken / torn - Replace



Wartungshistorie

(gemäß Auftraggeber Informationen)

Fahrgestellnummer: WV1ZZZSKZNX007086

Hersteller / Modell: VOLKSWAGEN VW Caddy Cargo 2.0 TDI BMT

Datum	KM-Stand	Beschreibung
30.01.2025	119.272	Kraftstofffilter ern; Motoröl b. Wartung; Ölfilter ern; Regelwartungsdienst; Systemtest/Eigendiagnose; Wartung Sonstiges
03.05.2024	93.027	AU
13.02.2024	90.124	AU; Bremse Sonstiges; Bremsflüssigkeit; Bremsflüssigkeit ern; Bremsklötze hinten; Bremsklötze vorne; Bremsscheiben hinten; Bremsscheiben vorne; Luftfiltereinsatz ern; Motoröl b. Wartung; Ölfilter ern; Regelwartungsdienst; Reparatur Sonstiges; Systemtest/Eigendiagnose; Wartung Sonstiges
24.03.2023	61.000	Motoröl b. Wartung; Regelwartungsdienst
04.08.2022	29.807	Motoröl b. Wartung; Ölfilter ern; Regelwartungsdienst; Wartung Sonstiges