



Expertise

Protocol number: 39726181
Order No. / Reference: 24775554
Inspection date: 14 May 2025

Manufacturer: Porsche
VIN: WP1ZZZ9Y5RDA21554

Model: Cayenne E-Hybrid Tiptronic S



Vehicle details	
Manufacturer / Type / Model / Equipment	
Porsche Cayenne E-Hybrid Tiptronic S	
Vehicle Identification number	WP1ZZZ9Y5RDA21554
Mileage (Read)	40,747 km
First registration	29 Feb 2024
Number of holders	1
Power / Engine displacement	224 kw / 2,995 ccm
Fuel type / Cylinder	Hybr.B/E ext. edition / 6
Gearbox / Number of gears	Automatic / 8
Type of drive	All-wheel drive
Type of vehicle	SUV
Colour / colour code	Quarzit Grau Metallic (M7Q)
Doors / Seats	5 / 5
Upholstery type	Leather
Colour of upholstery	Black



Vehicle details

Maintenance booklet / proof	digital proof / complete	Next maintenance in	19,900 km
Last maintenance on / at	01/2025 at 32,680 km		
Key is / should be	2 / 2	FZG documents	ZB#2 (B) was available (copy), ZB#1 (S) was not available
		Letter No.	HC478490
Previous damage / Accident	Detectable	Repainting	None detectable
Inspection conditions	Sufficient	Lifting equipment / pit	yes
Test drive	Not performed	Engine function test	Performed
Manufacturer key number/ type code number	0583 / ANU 00013		
Emission standard	EURO6;WLTP;EA;PI/CI;M, N1, N2	Fine dust sticker	
Permitted total weight	3,125 kg	Empty weight	

Tyres

Mounted tyres

#	Tyre size	Type of tyre	Manufacturer	Tread depth
1)	285/45 R21 113Y	Summer tyres on Light alloy	Pirelli	5mm / 5mm
2)	315/40 R21 115Y	Summer tyres on Light alloy	Pirelli	5mm / 5mm

Replacement

Typ	Tyre size	Type of tyre	Manufacturer	Tread depth
	Tirefit	Expiration date 01/2029		

Legend: Tread depth information for tires on the left is in the first place, for tires on the right is in the second place on the axle in the direction of travel



Equipment

Equipment

- 8-speed automatic transmission for all-wheel drive
- aluminum package, black
- Painted mirror housing
- Exterior mirrors painted completely
- Right exterior mirror, convex
- Automatic Adaptive Cruise Control (ACC)
- Onboard literature in German
- Climatronic, CFC-free
- Roof rails aluminum black
- anti-theft alarm system, interior monitoring, tow-away protection
- Rotating front seats
- Flat loading floor at the rear
- Front/rear parking aid
- aluminum door sills
- Exhaust system tailpipes in silver
- exterior black high gloss
- Standard suspension
- Fresh air intake with activated carbon filter
- Windscreen in heat-insulating glass
- Foot lever mechanism
- Padded dashboard
- mobile phone preparation with coupling box
- HD radio reception (high definition)
- Rear spoiler
- Induction charger for mobile phones
- Interior lighting basic + ambient
- Rear license plate holder (ECE)
- Comfort features
- Intersection assistant
- Charging cable for household socket type E/F 16A
- LED headlights PDLS+ darkened (Porsche Dynamic Light System)
- air suspension with level control and height adjustment (PASM)
- Front center armrest
- Engine noise generation
- Multifunctional camera
- Navigation device high
- Emergency Call & Service (e-call/b-call)
- front and rear parking assistant
- Porsche lettering black high-gloss/model name high-gloss black
- wheel arch extensions in vehicle color
- Wheel hub cover, colored coat of arms (concave)
- Tire pressure monitoring 433MHz
- recuperation without start/stop
- Roller blind for load compartment cover
- Rear seat bench/backrest, split, foldable, lockable, with center armrest
- Front side airbag with head airbag
- 9.5 J x 21 / 11 J x 21 aluminum
- Mounting kit for widened wheel arch cover in body color (USA)-2010, 2011- worldwide
- Left exterior mirror, aspherical
- Exterior mirrors, automatically dimming, electrically folding/adjustable and separately heated & memory
- BOSE® Surround Sound System
- connect Package Plus 13
- decorative plastic strips
- Digital clock
- Dual-tone horn
- Three-point automatic belts on the outside of the rear with ECE label
- use of lead-free fuel
- Emergency + Lane Keeping Assist + Traffic Jam Assist (EA + ALDW + ACA)
- Vehicles with special product enhancement measures
- parking brake
- Front camera
- Pedestrian Protection Extended
- Floor mats front and rear
- Speed limitation system
- HD Matrix LED headlights darkened
- Head-up display
- Hybrid drive system PHEV
- Interior/exterior mirrors automatically dimmable
- Instrument insert "Lowline" speedometer display in KM/H
- Front license plate holder (large)
- headrests for front seats
- Refrigerant R 1234 YF
- Charging cable for industrial socket CEE 3P 32A/400V/6h
- LED taillights darkened
- Steering column, axially and vertically adjustable
- Mirror Link (Apple® CarPlay)
- With traffic sign recognition
- center console (standard)
- Multifunction display/on-board computer
- Heated Race-Tex multifunction sports steering wheel
- Non-smoking package
- Online service, without OCU, with head unit coding, without WFS network
- pre sense city without pre care
- privacy glazing
- Digital radio reception
- Wheel bolts standard
- Tire valve black
- spare folding bike with compressor
- Rear view camera



- Power steering
- Seat belts automatically adjustable
- Seat covers partial leather in bi-color
- Heated seats front and rear
- BOSE sound system
- Sport Chrono Package Plus
- Lane Keeping Assistant Plus with Emergency Assist and Traffic Jam Assist
- ambient lighting
- additional instruments (volts and oil pressure)
- Leather gearshift knob
- interface for location assistant
- side tail light in standard design, black
- Servo closing tailgate
- Automatically dimming interior safety mirror
- Electric front seat adjustment, both with memory
- Sun visors with illuminated vanity mirrors on driver and passenger side
- Sport tailpipe made of polished stainless steel, 4-pipe look
- Tank cap
- Door handles in body color
- central locking Keyless-Go RdW

Brief expert findings

Documents submitted	At the time of the inspection, the registration certificate part 2 (letter) was available, but the registration certificate part 1 (certificate) was not available. (Copy)
VIN comparison	The vehicle identification number (VIN) was read and the undersigned verified that it matched the documents submitted during the inspection.
Inspection	The inspection conditions were sufficient for the assessment of the vehicle. Lifting equipment and a pit were available for examining the vehicle.
Test drive	No test drive/maneuvering was carried out during the inspection of the vehicle.
Engine function test	An engine test run was performed.

Accident damages

No. Accident

1 Side - left

Order/Scope of order

The order was placed to prepare a sales report for the vehicle described. This includes the following:

- Description of core relevant information about the vehicle
- Documentation of equipment features
(Delivery by third-party service providers)
- Documentation of damage, defects, missing parts
- Documentation of previous damage, unrepaired previous damage, repainting
- a brief visual or functional inspection of the equipment details if possible.
(Functional tests of driver assistance systems are not included in the scope of services!)
- a photo documentation of the vehicle



Basis for the order

This product is based on the Alphabet Fuhrpark GmbH guidelines for vehicle returns and valuations. The expert makes the explicit findings in each individual case objectively within the framework of the specified standards based on his or her own expertise.

The vehicle inspection takes place in a disassembled state.

Damage or defects that can only be detected during disassembly/diagnosis work or through advanced knowledge remain within the scope of the prognosis risk. An extended risk exists for concealed defects caused by fraudulent deception and not identifiable by the expert.

Damage or defects resulting from normal use or wear and tear of the vehicle will be accepted according to the applicable standard.

There was no explicit identification or monetary consideration of the expected features within the product.

Features which in their nature and severity slightly exceed normal use but do not constitute unacceptable damage will be documented and identified under signs of use if necessary.

Damage or defects which, according to the underlying standard, can no longer be attributed to normal use or wear and tear are listed in the product under "Depreciating Factors".

Depending on the product specification, a monetary ID can be provided. If this takes place, the costs can be 100% d or pro rata depending on the vehicle's age and mileage.

Previous damages

Non-repaired previous damages were found at the vehicle. The necessary repair costs are listed in the expert report or if necessary, are listed in detail in a separately enclosed repair cost calculation.



Figure 1: Diagonal front (left)



Figure 2: Diagonal front (right)



Figure 3: Diagonal rear (left)



Figure 4: Diagonal rear (right)



Figure 5: Interior - front



Figure 6: Interior - rear



Figure 7: Instrument cluster



Figure 8: Instrument panel



Figure 9: interior 360° view ([Online link](#))



Figure 10: Cargo area



Figure 11: VIN



Figure 12: Mounted tyres

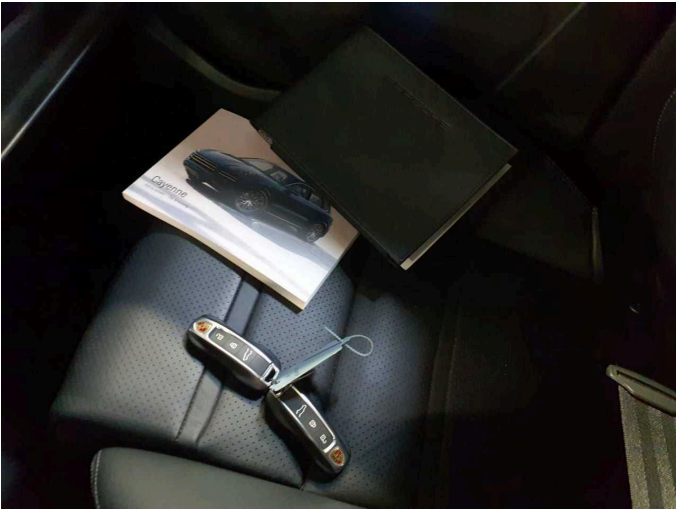


Figure 13: Documents



Figure 14: Navigation



Figure 15: Misc.



Figure 16: Misc.



Figure 17: Misc.



Figure 18: Misc.



Figure 19: Misc.



Figure 20: Misc.



Figure 21: Misc.



Figure 22: Misc.

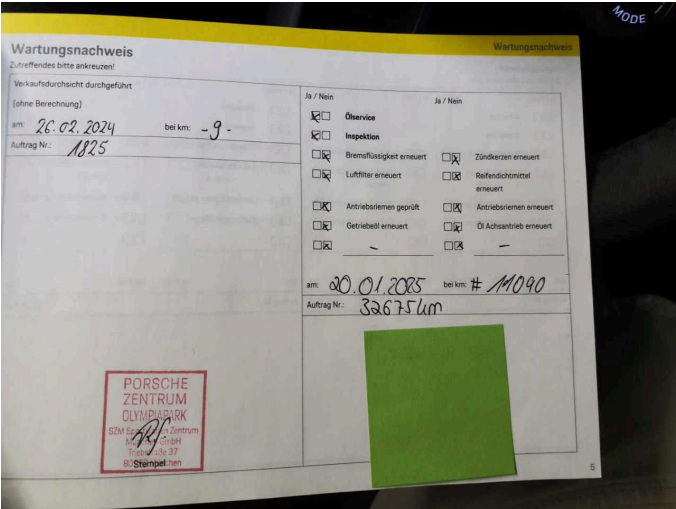


Figure 23: Misc.

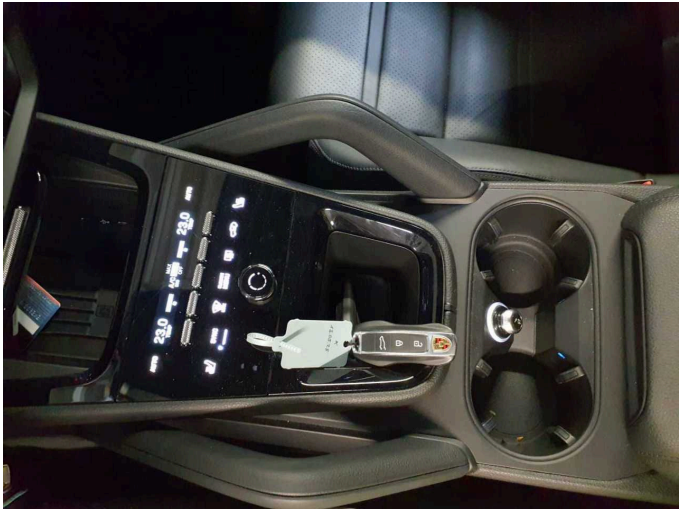


Figure 24: Misc.



Figure 25: Misc.



Figure 26: Misc.



Figure 27: Misc.

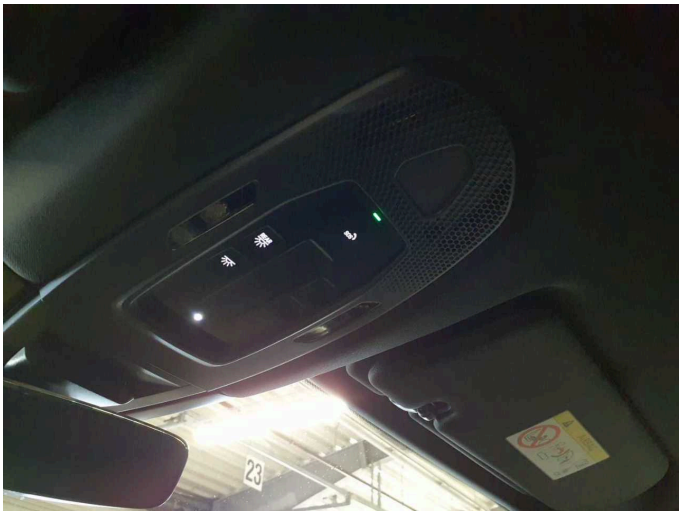


Figure 28: Misc.



Figure 29: Misc.



Figure 30: Misc.



Figure 31: Misc.



Figure 32: Misc.



Figure 33: Misc.



Figure 34: Misc.



Figure 35: Misc.

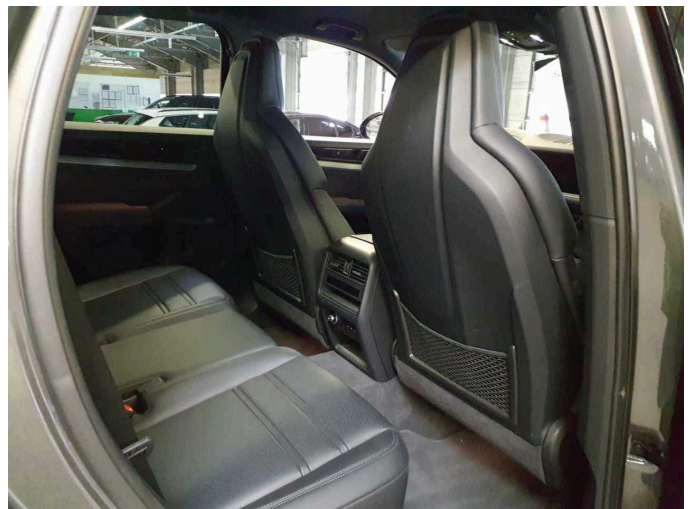


Figure 36: Misc.

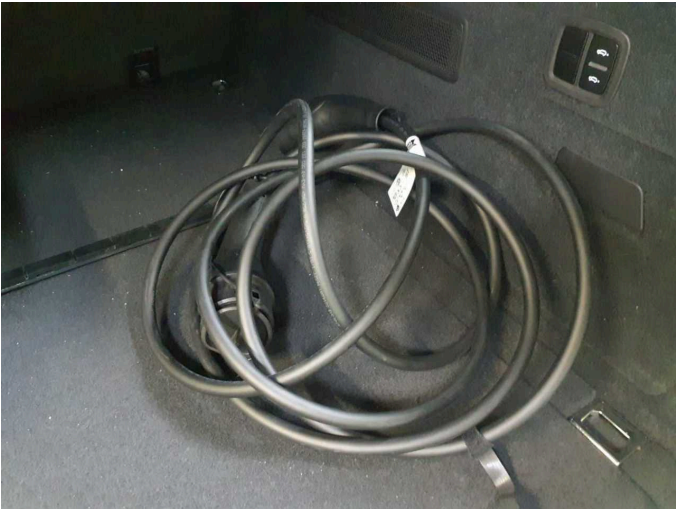


Figure 37: Misc.



Figure 38: Misc.



Figure 39: Misc.



Accident 1: Side - left



Accident 1: Side - left



Accident 1: Side - left



Accident 1: Side - left



Accident 1: Side - left



Accident 1: Side - left



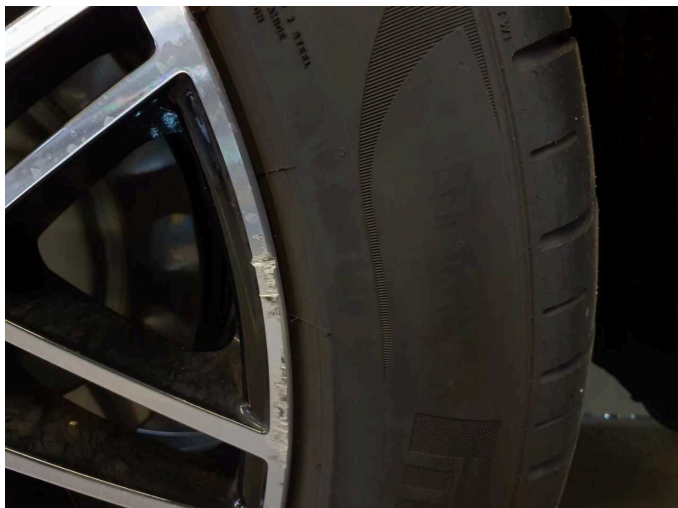
Accident 1: Side - left



Accident 1: Side - left



Accident 1: Side - left



Accident 1: Side - left



Accident 1: Side - left