



# MINI COUNTRYMAN

## Mini Cooper D Countryman All4

VIN NO WMWYU110603E28293  
Registration Number 0603E28293



MOT Date	Number of Owners	Number of Keys	Odometer Reading
2026-10-01	1	2	183237 km
Last Service	Last Service Mileage	First Registration Date	Country First Registered
2024-10-28	163236	2017-11-22	Germany

### Inspection Report Summary

Customer	BCA Online	Report Number	P20250731111425
Inspection Date / Place	2025-07-31 / BCA Oberndorf	Cosmetic Grade	2

### Vehicle Summary

Vehicle Condition	Runner	VAT Type	Qualifying
Fuel Type	Diesel	Road Worthy	Yes
Colour	Grey	Engine Size (cc)	1995
Engine Size	2.0	No of Doors	5
Body Type	Sedan	Drive Train	All-Wheel-Drive permanent
Seat Colour		No of Seats	5
Seat Covering Name	Schwarz	Seat Covering	Cloth/Leather
Charging Cables		NEDC CO2 Rating (q/km)	127
Gearbox Type	Manual		

### Vehicle History & Documents

Service Book Available	Present	Next Service Mileage	km
Previous Usage		Imported	No
Manufacturer Warrenty			









Equipment

USB Socket	Alloys wheels	Auxiliary Socket	Diesel particulate filter
Remote adjusting wing mirrors	Roof rails	Stability control	Electrically folding wing mirrors
LED Headlamps	Rear parking sensors	Airbag Status	Anti-lock braking
Bluetooth telephone interface	Front fog lamps	Remote central locking	Split folding rear seats
Central locking	Leather steering wheel	Radio	

Equipment Details

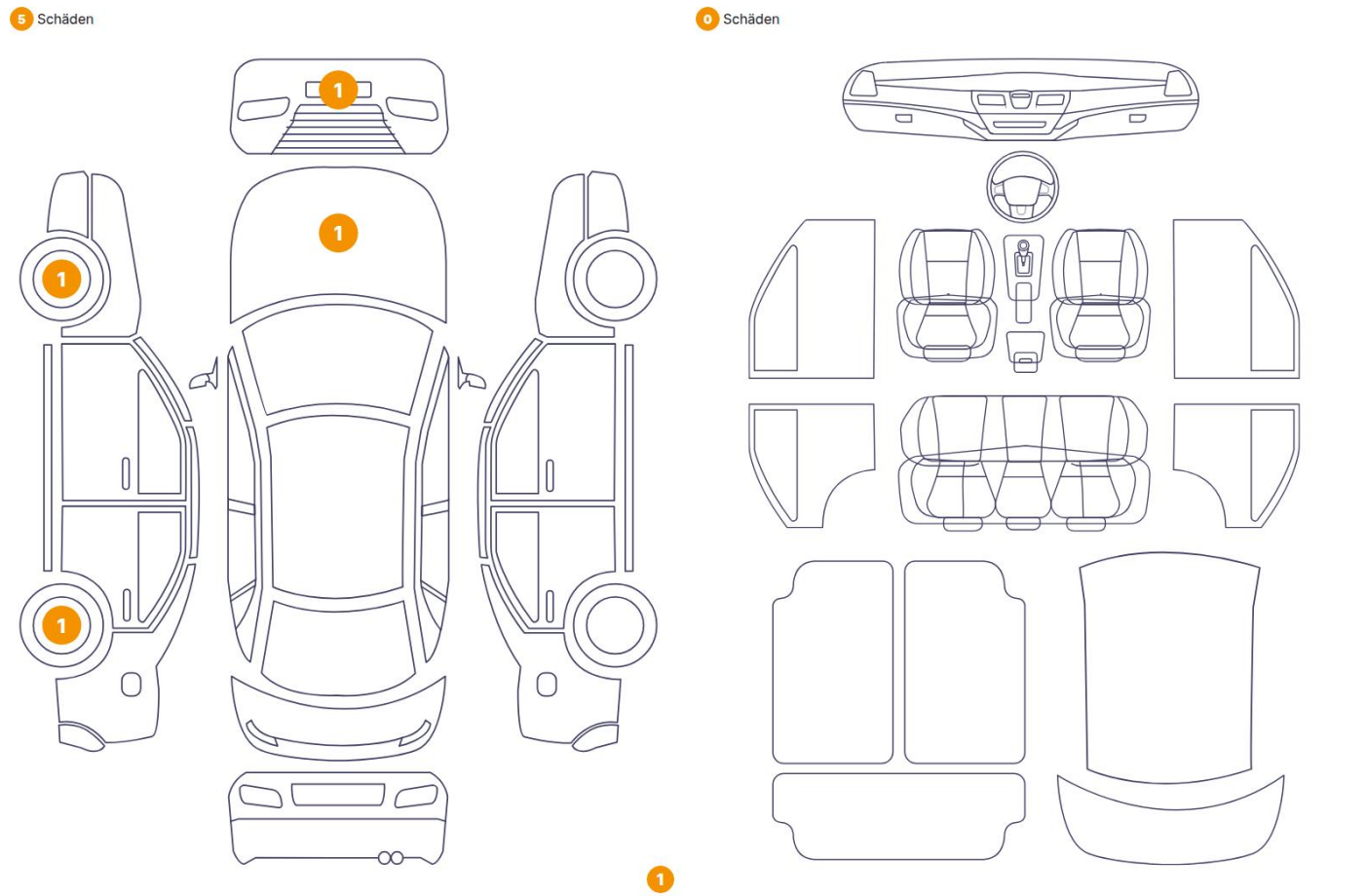
Air Conditioning	Dual Zone Climate Control	Alloy Wheel Size	18
Seat Heating	No		

Wheels & Tyres

Right Front Tyre Depth	5	Left Front Tyre Depth	5
Right Rear Tyre Depth	5	Left Rear Tyre Depth	5



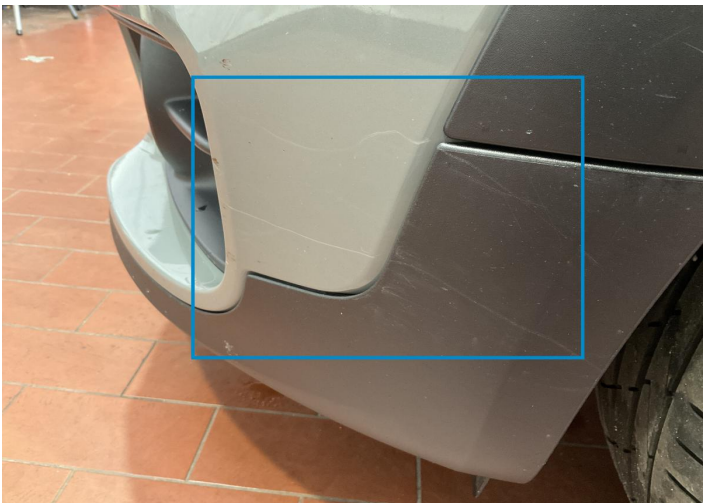
Cosmetic Damage



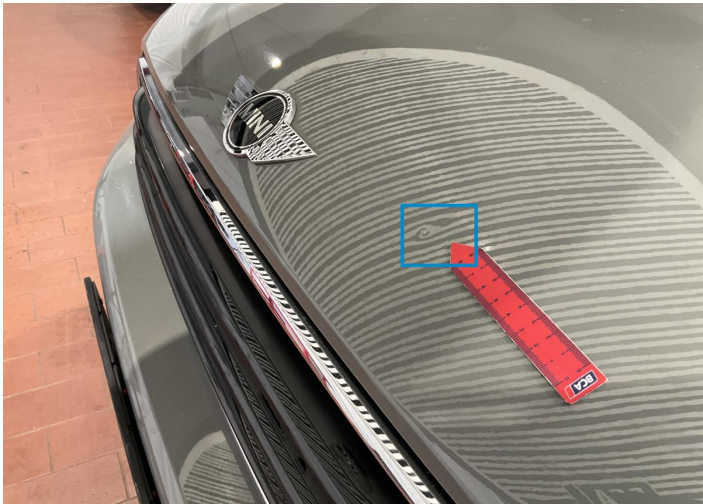
Component		Damage	Comments
1	Other	Anomalyon Element	
2	Corner Bumper / Front Left	Paint / Scratch / Line	
3	Hood	Bodywork / Dent / Dent	
4	Rim / Front Left	Paint / Stone Chip	
5	Rim / Back Left	Out of Bodywork / Scratch	



1.  
Anomaly Element -



2. Corner Bumper / Front Left  
Paint / Scratch / Line -



3. Hood  
Bodywork / Dent / Dent -



4. Rim / Front Left  
Paint / Stone Chip -



5. Rim / Back Left  
Out of Bodywork / Scratch -

## Mechanical Condition

### Control Lights

Display Defect	✓	Service Light	✓
ABS Warning Light	✓	ESP Fault/Traction Control Malfunction Light	✓
Diesel Particulate Filter Light	✓	Airbag Warning Light	✓
Oil Pressure Warning Light	✓	Brake Warning Light	✓
Power Steering Warning Light	✓	Alternator / Battery	✓
All - wheel Drive	✓	No Dashboard Lights	✓
Tire Pressure Monitoring System	✓		

### Equipments Test

Central Locking	✓	Main & Spare Keys Functioning	✓
Electric Windows	✓	Parking Sensors / Cameras Functioning	✓
AC / Heating System	✓	Other Equipments	✓

### Engine

Engine Status / EML	✓	Engine Leak Visible	✓
Engine Starts	✓		

### Gearbox

Gear Box	✓
----------	---

### Levels

Brakes Fluid	✓	Coolant Fluid	✓
--------------	---	---------------	---



Test Drive Inspection

Steering Wheel			
Steering   Noise / Anomaly		✓	
Engine			
Engine Noise	✓	The Gears Scratch / Skip / Abnormal Operation	✓
Fume Quantity	✓	Power Loss	✓
Clutch			
Clutch Functioning		✓	
Brake			
Brake System Anomaly		✓	
General			

Test Driven Status                      Not Performed

- ✓ *No troubles detected, good condition or correct tests, according to vehicle age and mileage*
- ! *Damages or malfunction detected that requires repairs by the buyer*
- NA *Not applicable*
- ☐ *Not tested*

Disclaimer

*Please also note the "UserGuide condition report", which shows the scope of the vehicle description.*

[User Guide](#)