



# MINI COUNTRYMAN

## Mini Cooper D Countryman All4

VIN NO WMWYU110603E28293  
Registration Number 0603E28293



MOT Date	Number of Owners	Number of Keys	Odometer Reading
2026-10-01	1	2	183237 km
Last Service	Last Service Mileage	First Registration Date	Country First Registered
2024-10-28	163236	2017-11-22	Germany

### Inspection Report Summary

Customer	BCA Online	Report Number	P20250731111425
Inspection Date / Place	2025-07-31 / BCA Oberndorf	Cosmetic Grade	2

### Vehicle Summary

Vehicle Condition	Runner	VAT Type	Qualifying
Fuel Type	Diesel	Road Worthy	Yes
Colour	Grey	Engine Size (cc)	1995
Engine Size	2.0	No of Doors	5
Body Type	Sedan	Drive Train	All-Wheel-Drive permanent
Seat Colour		No of Seats	5
Seat Covering Name	Schwarz	Seat Covering	Cloth/Leather
Charging Cables		NEDC CO2 Rating (q/km)	127
Gearbox Type	Manual		

### Vehicle History & Documents

Service Book Available	Present	Next Service Mileage	km
Previous Usage		Imported	No
Manufacturer Warrenty			









### Equipment

USB Socket	Alloys wheels	Auxiliary Socket	Diesel particulate filter
Remote adjusting wing mirrors	Roof rails	Stability control	Electrically folding wing mirrors
LED Headlamps	Rear parking sensors	Airbag Status	Anti-lock braking
Bluetooth telephone interface	Front fog lamps	Remote central locking	Split folding rear seats
Central locking	Leather steering wheel	Radio	

### Equipment Details

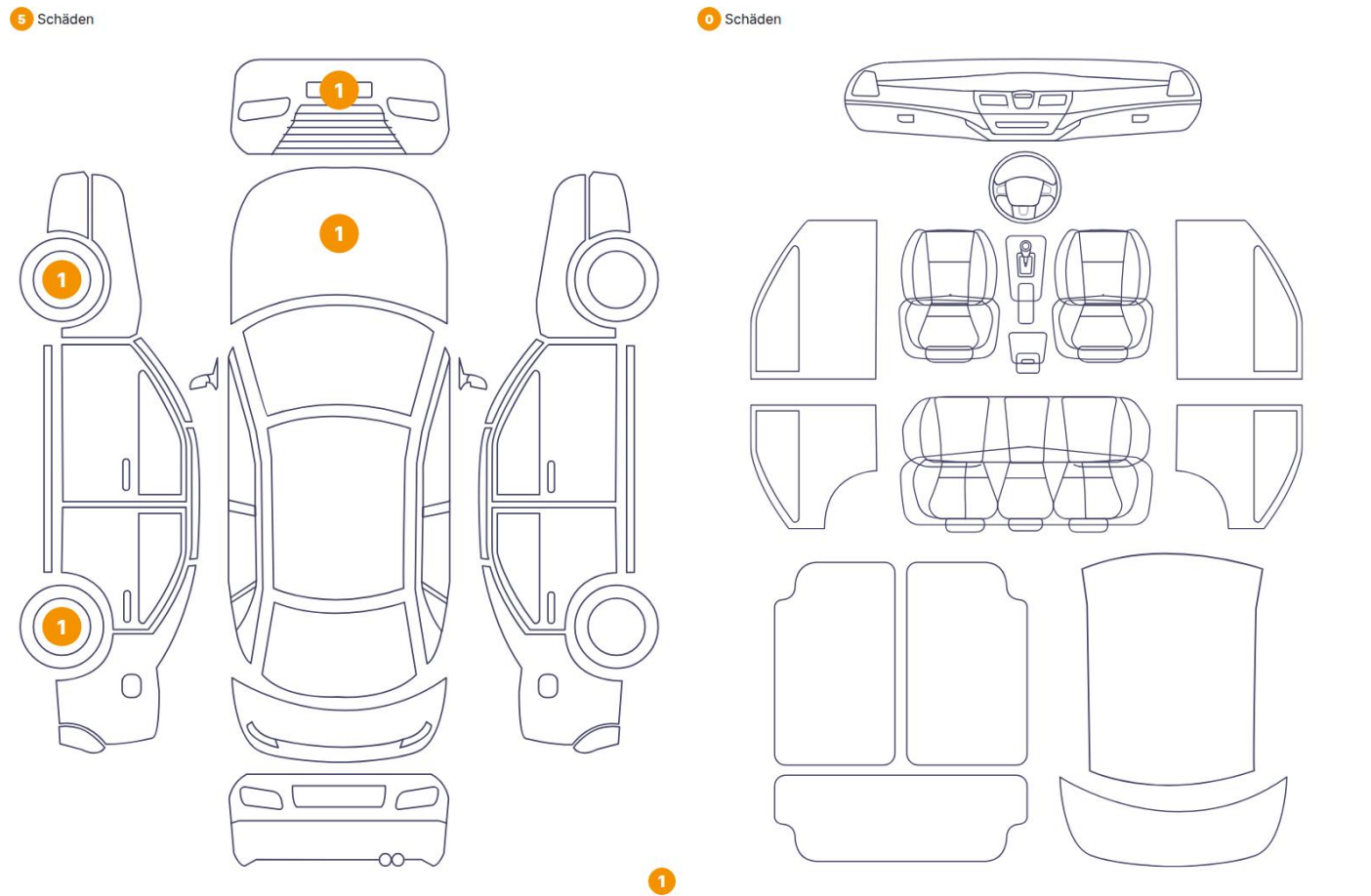
Air Conditioning	Dual Zone Climate Control	Alloy Wheel Size	18
Seat Heating	No		

### Wheels & Tyres

Right Front Tyre Depth	5	Left Front Tyre Depth	5
Right Rear Tyre Depth	5	Left Rear Tyre Depth	5



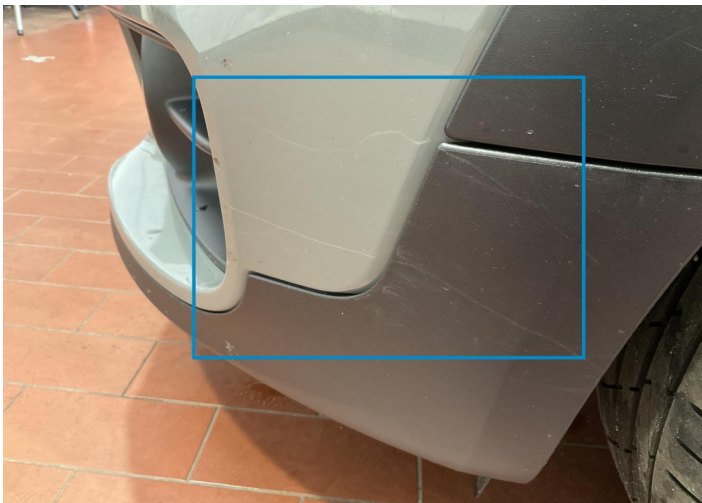
Cosmetic Damage



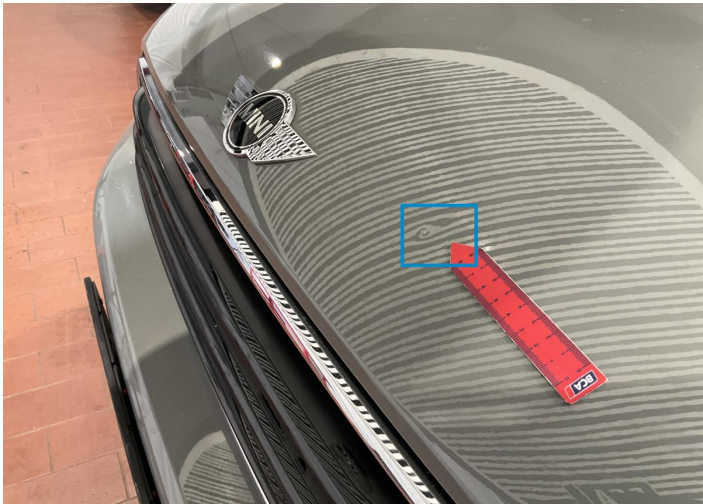
Component		Damage	Comments
1	Other	Anomalyon Element	
2	Corner Bumper / Front Left	Paint / Scratch / Line	
3	Hood	Bodywork / Dent / Dent	
4	Rim / Front Left	Paint / Stone Chip	
5	Rim / Back Left	Out of Bodywork / Scratch	



1.  
Anomaly Element -



2. Corner Bumper / Front Left  
Paint / Scratch / Line -



3. Hood  
Bodywork / Dent / Dent -



4. Rim / Front Left  
Paint / Stone Chip -



5. Rim / Back Left  
Out of Bodywork / Scratch -

## Mechanical Condition

### Control Lights

Display Defect	✓	Service Light	✓
ABS Warning Light	✓	ESP Fault/Traction Control Malfunction Light	✓
Diesel Particulate Filter Light	✓	Airbag Warning Light	✓
Oil Pressure Warning Light	✓	Brake Warning Light	✓
Power Steering Warning Light	✓	Alternator / Battery	✓
All - wheel Drive	✓	No Dashboard Lights	✓
Tire Pressure Monitoring System	✓		

### Equipments Test

Central Locking	✓	Main & Spare Keys Functioning	✓
Electric Windows	✓	Parking Sensors / Cameras Functioning	✓
AC / Heating System	✓	Other Equipments	✓

### Engine

Engine Status / EML	✓	Engine Leak Visible	✓
Engine Starts	✓		

### Gearbox

Gear Box	✓
----------	---

### Levels

Brakes Fluid	✓	Coolant Fluid	✓
--------------	---	---------------	---



Test Drive Inspection

Steering Wheel			
Steering   Noise / Anomaly		✓	
Engine			
Engine Noise	✓	The Gears Scratch / Skip / Abnormal Operation	✓
Fume Quantity	✓	Power Loss	✓
Clutch			
Clutch Functioning		✓	
Brake			
Brake System Anomaly		✓	
General			

Test Driven Status                      Not Performed

- ✓ *No troubles detected, good condition or correct tests, according to vehicle age and mileage*
- ! *Damages or malfunction detected that requires repairs by the buyer*
- NA *Not applicable*
- ☐ *Not tested*

Disclaimer

*Please also note the "UserGuide condition report", which shows the scope of the vehicle description.*

[User Guide](#)